

*Presentation to 17 November 2010  
Community Preservation Committee  
public hearing, Newton, MA*

# **Engineering**

## **Map and Plan Preservation Project**

# THE VAULT

Home to more than 43,300 maps/plans, 44 index books, 501 abstract books and 3,048 notebooks which are fundamental historical resources documenting the physical development of the City of Newton from the 18<sup>th</sup> century to the present.









11.09.2010

Plans in need of repair



N 56 18165-18729

11984  
N-1



WORKS

COMMONWEALTH OF MASSACHUSETTS



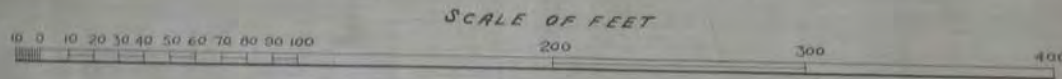




F.L. Olmsted – founder of American  
Landscape Architecture

NEWTON CENTRE PLAYGROUND

*Preliminary Plan*



F.L. OLMSTED & CO. LANDSCAPE ARCHITECTS  
BROOKLINE, MASS. MARCH 26<sup>th</sup> 1891.

— THE DESIGN —

THE GROUND COVERED BY THIS PLAN IS A DEPRESSED AREA, MUCH OF IT CONSTANTLY WATER-SOAKED, SUBJECT TO BE FLOODED AND UNSUITABLE TO BE BUILT UPON. WHILE IN PRIVATE HANDS AND SUBJECT TO TRANSFER IN SMALL PARCELS, IT WAS LIABLE TO BECOME A PUBLIC EYESORE AND A MENACE TO THE HEALTH OF THE COMMUNITY. PARTLY FOR THIS REASON, AND PARTLY BECAUSE IT IS WELL SITUATED AND WELL ADAPTED TO BE ECONOMICALLY FORMED INTO A MUCH NEEDED PLAYGROUND, POSSESSION OF IT HAS BEEN ACQUIRED BY THE CITY. TO ADAPT THE GROUND TO ITS INTENDED USE, IT IS PROPOSED TO ESTABLISH A SYSTEM OF THOROUGH UNDER-GROUND DRAINAGE WITH A LOWER OUTLET THAN NOW EXISTS. THIS SYSTEM, HOWEVER, IS NOT INTENDED TO CONVEY THE WATER NOW FLOWING THROUGH THE PROPERTY IN CONSTANT STREAMS BY OPEN DITCHES. IT IS INTENDED THAT THIS WATER SHALL BE CARRIED, SO FAR AS SPACE IS AVAILABLE, BY CHANNELS HAVING, AS NEARLY AS PRACTICABLE, THE CHARACTER OF NATURAL BROOKS. IN ORDER TO LEAVE A LARGE AREA OF UNBROKEN TURF FOR BALL GAMES, THESE BROOK CHANNELS ARE TO BE LAID OUT NEAR THE BORDERS OF THE PROPERTY. THE EXISTING WALLED DITCH FOR CARRYING THE WASTE WATER OF THE OLD AQUEDUCT, NEAR THE WESTERN END OF THE PROPERTY, IS TO BE DONE AWAY WITH WHERE IT CROSSES THE MEADOW, THE NEW BROOK CHANNEL BEING ADAPTED TO ANSWER THE SAME PURPOSE.

FROM THE STRAIGHT WALK SHOWN ON THE DRAWING, FOLLOWING THE LINE OF THE AQUEDUCT, AN UNOBSTRUCTED VIEW OF THE BALL GROUND WILL BE COMMANDED. OTHER WALKS SHOWN ARE DESIGNED TO BE USED FOR RAMBLING, BUT ARE SO LAID OUT AS TO SERVE AS MEANS OF CONVENIENT COMMUNICATION BETWEEN THE ENTRANCES FROM PUBLIC STREETS AND DIFFERENT FEATURES OF INTEREST WITHIN THE GROUND. PARTS OF THE GROUND NOT NEEDED FOR GAMES AND ATHLETIC EXERCISES ARE TO BE TREATED WITH A VIEW TO SECURING AS MUCH BEAUTY AS PRACTICABLE, OF A NATURAL CHARACTER.

# F.L. Olmsted – Newton Centre Playground

## NEWTON CENTRE PLAYGROUND

Professional Plan

Scale of Feet

Prepared by F. L. Olmsted & S. M. Lockwood

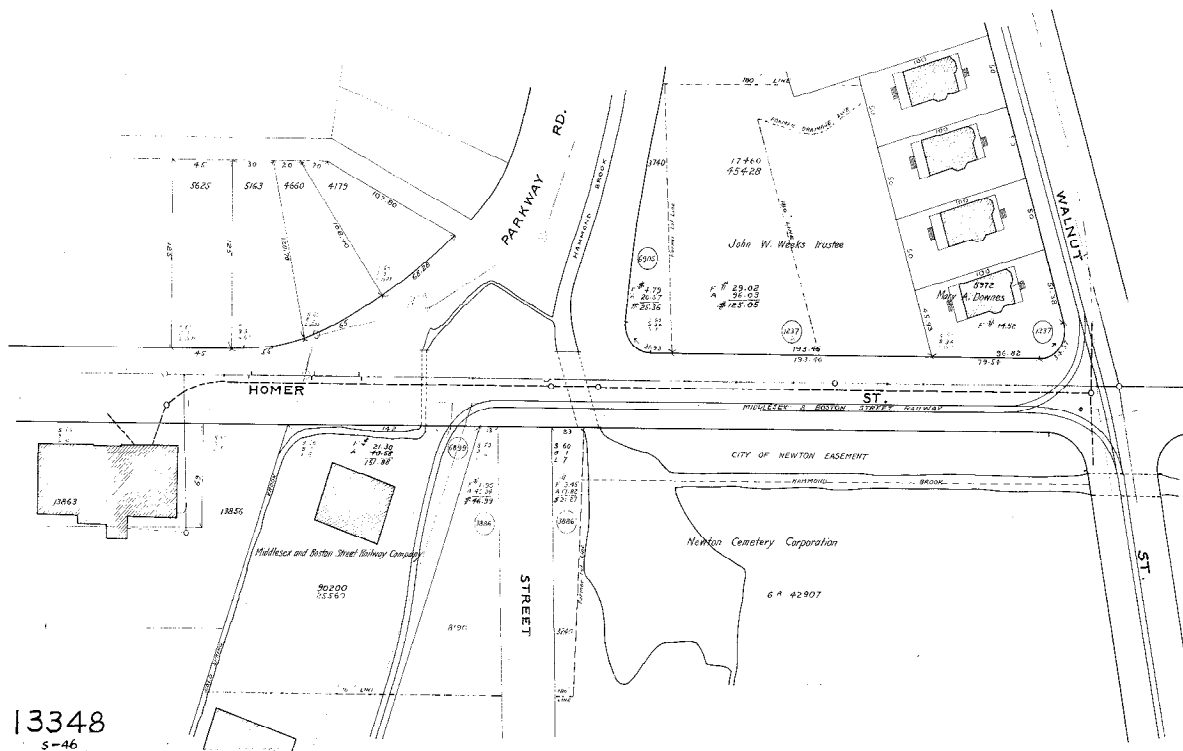
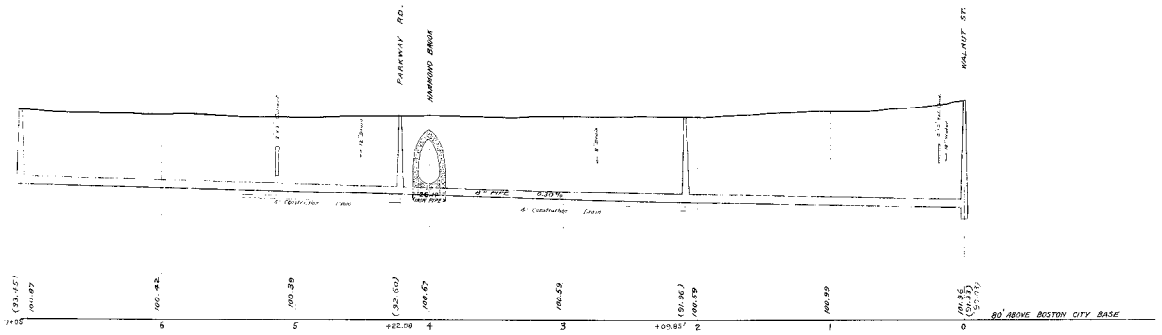
### THE DESIGN

The general purpose of this plan is to provide a well-kept and attractive playground for the children of the Newton Centre. The design is based on the principles of landscape architecture, and is intended to provide a place where the children can play and enjoy themselves in a safe and healthy environment. The plan includes a large open area for play, a tennis ground, and a building for the school. The design is intended to be a permanent improvement to the neighborhood, and is intended to provide a place where the children can play and enjoy themselves in a safe and healthy environment.



Sewer Atlas with plans  
scanned in.





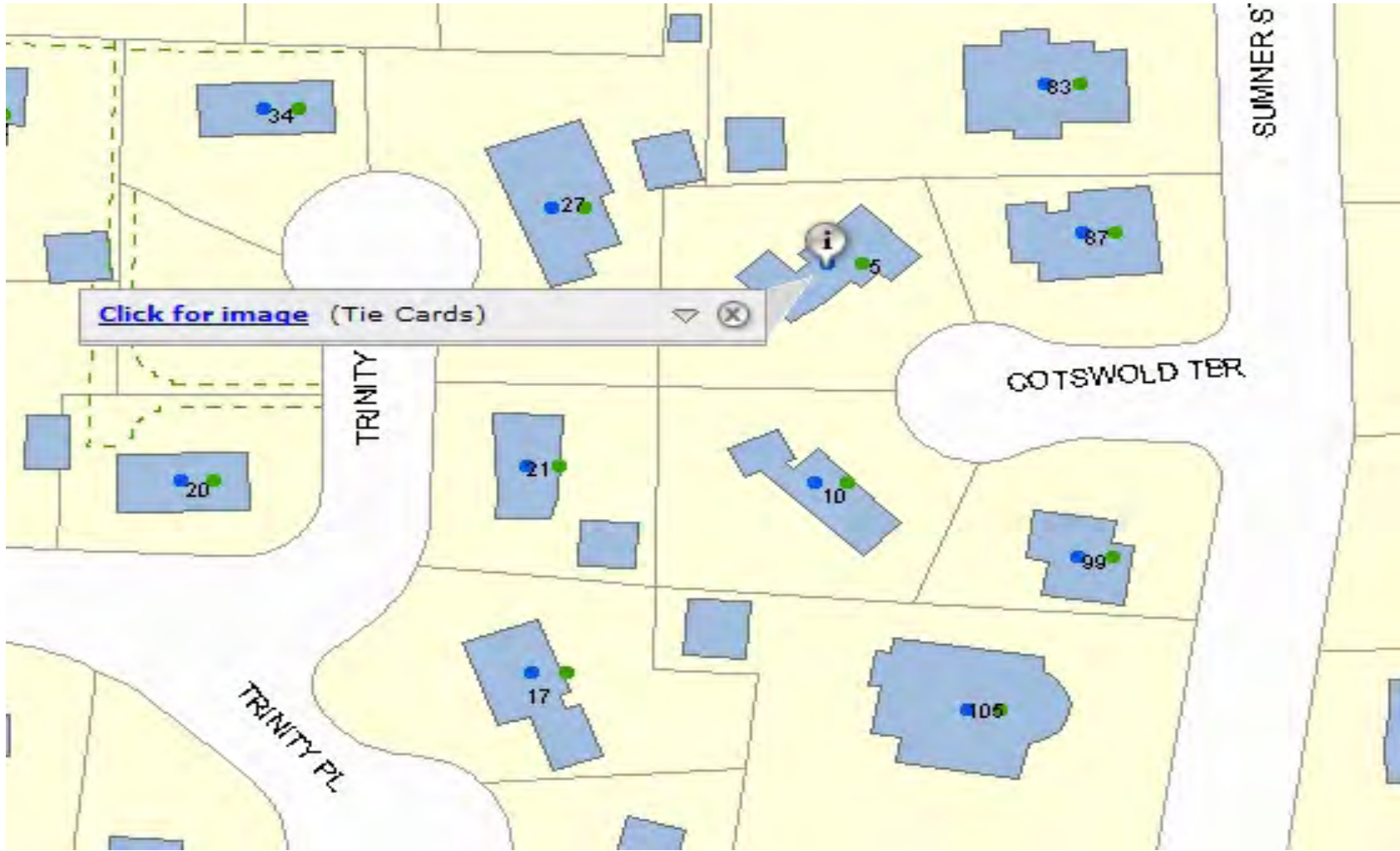
*Handwritten signature*

**CITY OF NEWTON**  
 MASSACHUSETTS  
**HOMER STREET**  
 WALNUT STREET TO PARKWAY ROAD  
 PLAN AND PROFILE SHOWING  
 SEWER AND SEWER ASSESSMENT  
 Horizontal Scale 40' to an inch  
 Vertical Scale 8' to an inch  
 February 5, 1912.  
*City Engineer*  
**13348**

**13348**  
 S-46

S-46

# Sewer and Water Ties



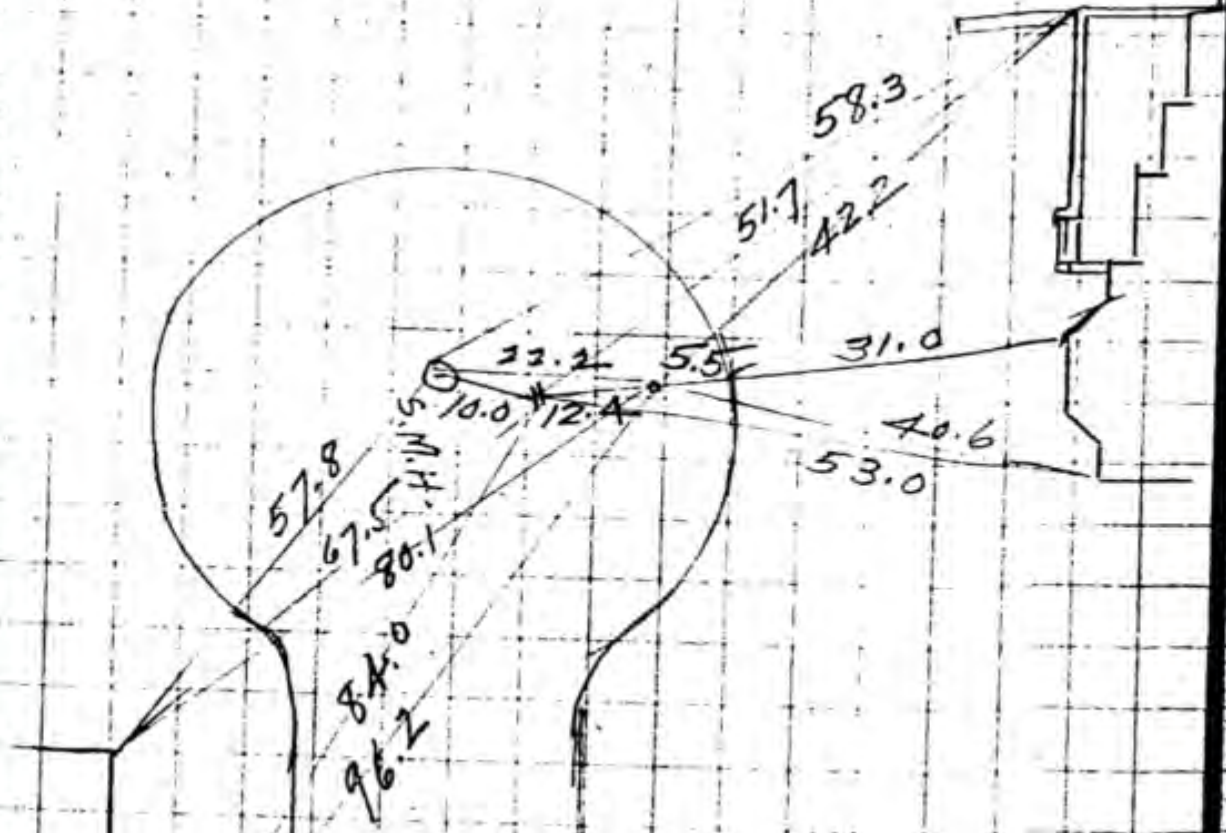
123

✓  
Myron L. Brown 14005 Feb. 9, 29  
5 Cotswold Ter. Wd. 6

COPIED

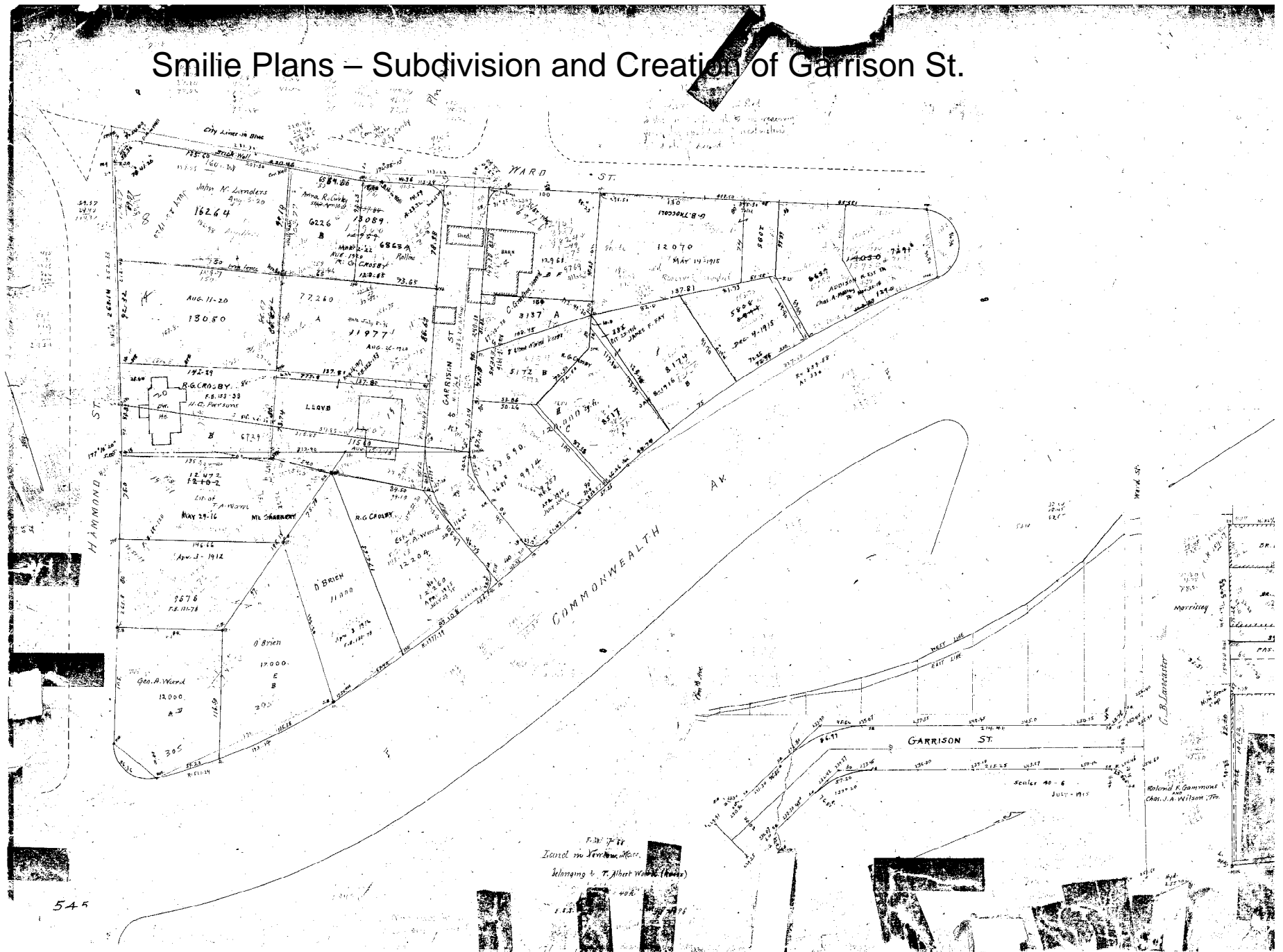
W.E.F.  
W.C.M.  
W.A.B.

DRIVE





# Smilie Plans – Subdivision and Creation of Garrison St.



545

Land in Vertical Mass  
Belonging to T. Albert Wood (Heir)

Scale 40'-6"  
JULY-1915  
Roland E. Gammons  
Chas. J. A. Wilson, Trs.

1874 Atlas Scanned and Preserved (funds provided by CPC)

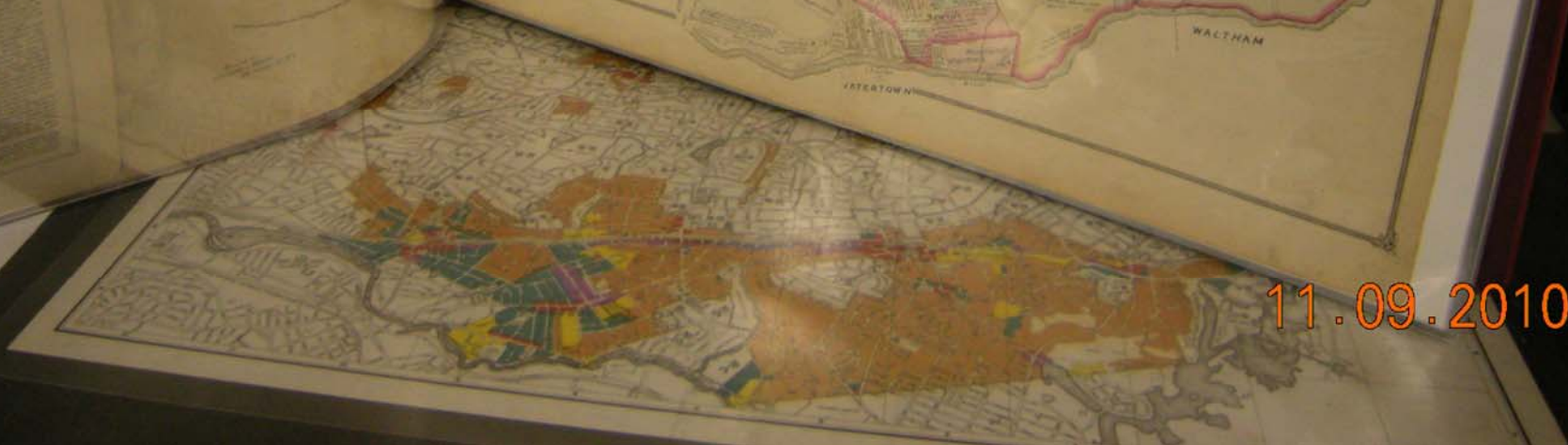
ATLAS  
OF  
THE CITY OF  
NEWTON  
MASSACHUSETTS

F. W. BEERS  
1874

11.09.2010

ATLAS  
OF  
THE CITY OF  
**NEWTON**  
MASSACHUSETTS

From actual Surveys by one of the  
of  
**F. W. BEERS**  
Published by  
**D. W. BEERS & CO.**  
36 VESEY STREET  
NEW YORK  
1873.



11.09.2010