

TREATMENT NOTES - WAR MEMORIAL STEPS

GENERAL

G1 REMOVE SOILING FROM 100% OF LIMESTONE, GRANITE, AND BRICK MASONRY SURFACES USING DESIGNATED CHEMICAL CLEANERS AND LOW PRESSURE WATER RINSE. (NOTE THAT MORTAR AND MASONRY IS SOFT AND POWER WASHING AT HIGH LEVELS OF PRESSURE MAY CAUSE DAMAGE; LOW PRESSURE IS ADVISED). NOTE: METHODS FOR CLEANING WILL VARY ON DIFFERENT SURFACES DEPENDING ON THE LEVEL OF SOILING AND MATERIAL BEING CLEANED. IN ADDITION TO GENERAL CLEANING IS REMOVAL OF COPPER STAINING, BIOLOGICAL GROWTH, WATER STAINING, PAINT, RUST AND COPPER STAINING. REFER TO SPECIFICATION SECTION 040110.

G2 REMOVE IVY. TYPICALLY TRIM ALL TREES AND BUSHES AWAY FROM THE BUILDING.

G3 PARTIALLY RESET GRANITE STEPS. REFER TO STRUCTURAL DRAWING S-1, DETAIL

G4 RAKE OUT AND REPOINT 100% OF GRANITE MASONRY. THIS INCLUDES STEPS, PORTICO FLOOR AND FOUNDATION BASE. REFER TO SPECIFICATION SECTION 040105.

G5 RAKE OUT AND REPOINT 100% OF LIMESTONE OF STAIR SIDEWALLS (EXCLUDES OUTER SIDE OF STAIR WALL. SEE DRAWING FOR AREAS OF REPOINTING). REFER TO SPECIFICATION SECTION 040105.

G6 RAKE OUT AND REPOINT LIMESTONE AND BRICK MORTAR JOINTS AS INDICATED ON THE DRAWINGS. REFER TO SPECIFICATION SECTION 040105.

G7 PATCH HOLES IN MASONRY LEFT BY REMOVAL OF PINS, ANCHORS, NAILS, CONDUIT, AND ALL OTHER ELEMENTS DESIGNATED FOR REMOVAL. REMOVE ANCHORS AND PATCH HOLES LEFT BY SCAFFOLDING ANCHORS WHEN SCAFFOLD IS REMOVED AT THE COMPLETION OF THE PROJECT. REFER TO SPECIFICATION SECTION 040105.

G8 REMOVE 100% OF OLD CAULK AT BRICKMOUND OF MASONRY OPENINGS AND REPLACE WITH NEW SEALANT.

G9 DISASSEMBLE, DOCUMENT, AND REBUILD GRANITE FLAGPOLE BASES (2).

STONE: REFER TO SPECIFICATION SECTION 040140.

S1 RAKE OUT AND REPOINT MORTAR JOINTS. REFER TO SPECIFICATION SECTION 040115.





S2 REMOVE LOOSE, SPALLING, OR MISSING SECTIONS OF STONE SURFACE; PATCH LIMESTONE USING COMPOSITE PATCHING MATERIAL TO MATCH THE COLOR, TEXTURE, AND PROFILE OF ADJACENT STONE. REFER TO SPECIFICATION SECTION 040140.

S3 REPLACE DAMAGED SECTIONS OF STONE USING DUTCHMEN TO MATCH COLOR, TEXTURE, AND PROFILE OF ADJACENT STONE. REFER TO SPECIFICATION SECTION 040140.

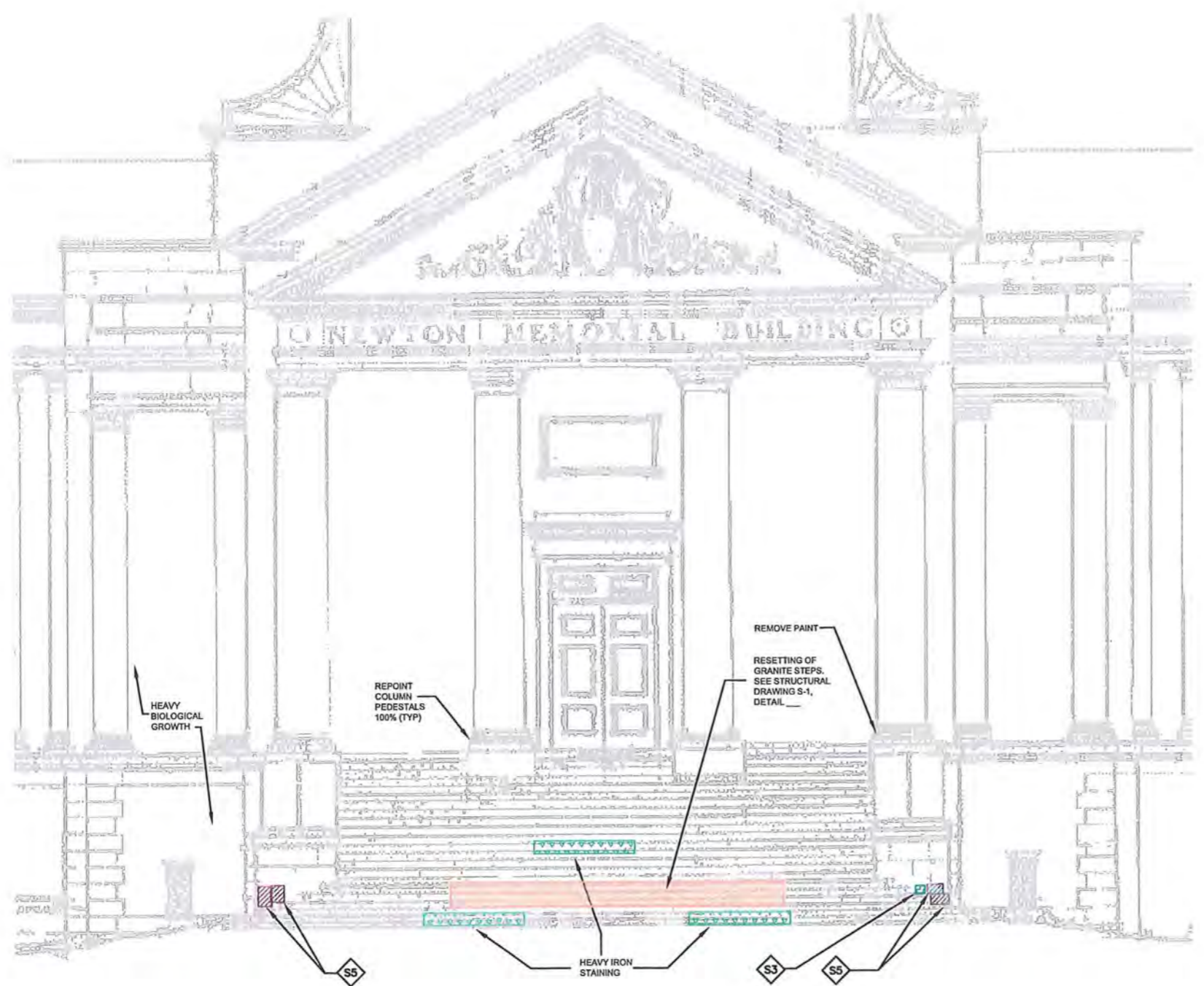
S4 DOCUMENT, DISMANTLE, AND RESET STONE UNIT. REFER TO SPECIFICATION SECTION 040140.

S5 REPLACE DETERIORATED STONE UNIT WITH NEW UNIT THAT MATCHES THE ORIGINAL IN COLOR, TEXTURE, AND PROFILE. REFER TO SPECIFICATION SECTION 040140.

LEGEND

-  INSTALL PATCH
-  INSTALL DUTCHMAN
-  CRACK
-  REPOINT JOINT
-  TREATMENT AREA
-  REPLACE UNIT
-  RESET UNIT

NOTE: GRAPHIC INDICATIONS OF WORK SPECIFIED ON DRAWINGS ARE INTENDED TO GIVE LOCATION OF REPAIR AND APPROXIMATE SIZE OF REPAIR ONLY. ALL WORK SHOULD BE FIELD VERIFIED.

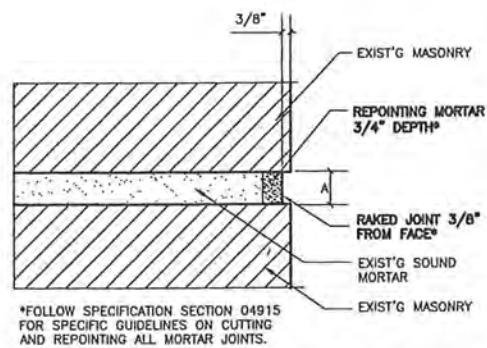
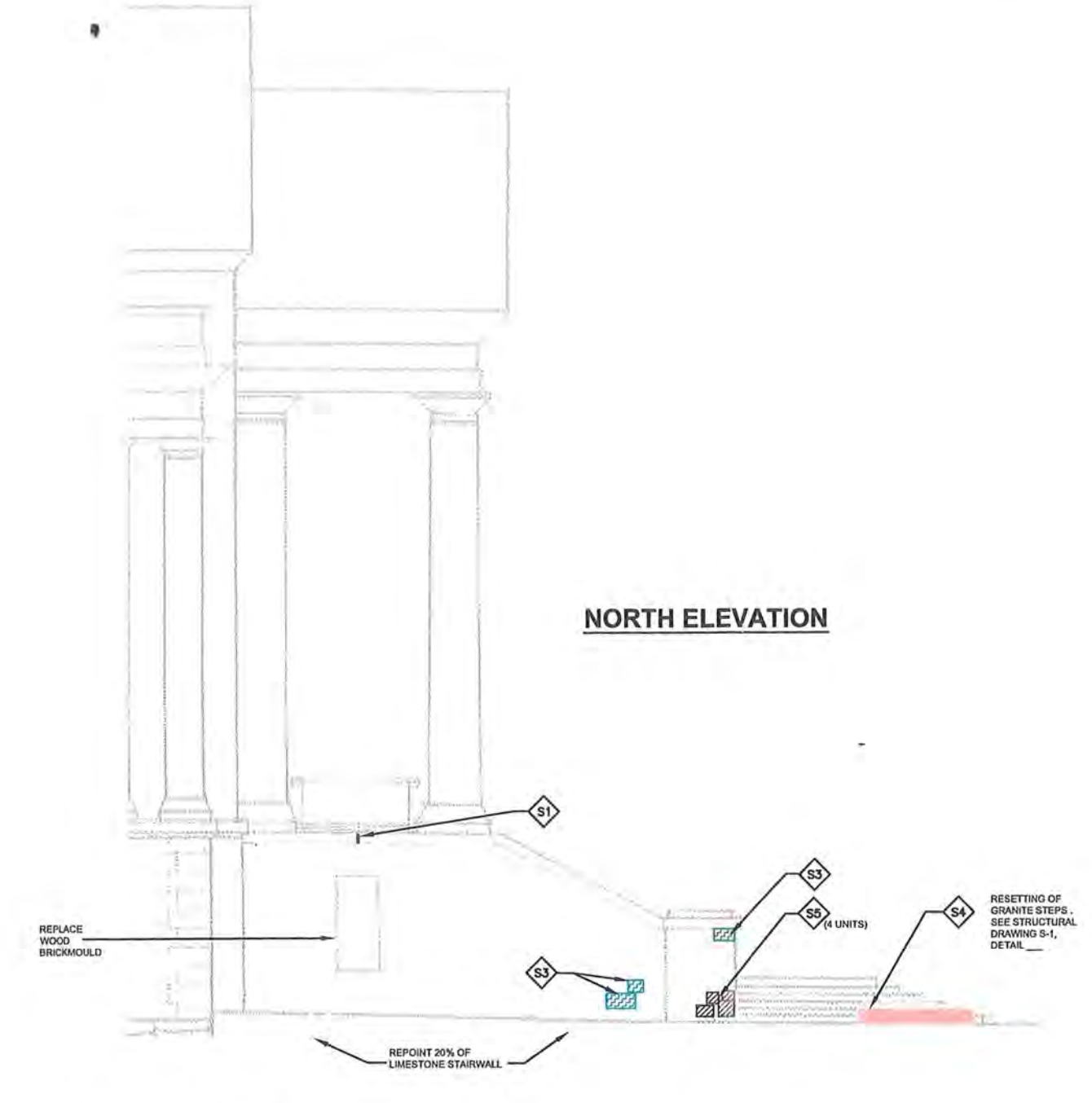
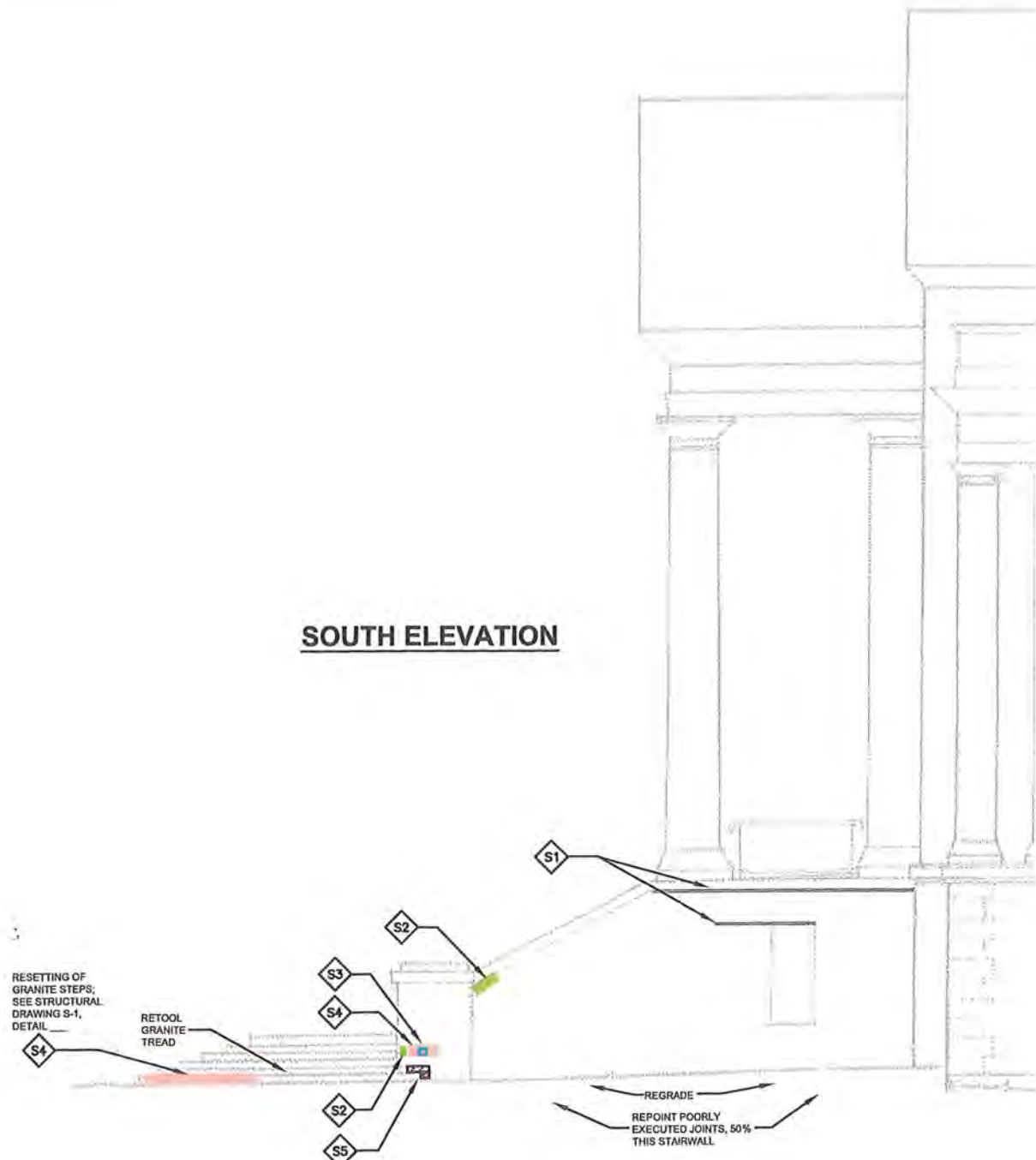


EAST ELEVATION

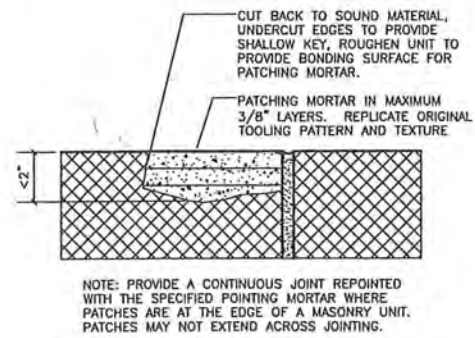
PROGRESS
NOT FOR
CONSTRUCTION

SOUTH ELEVATION

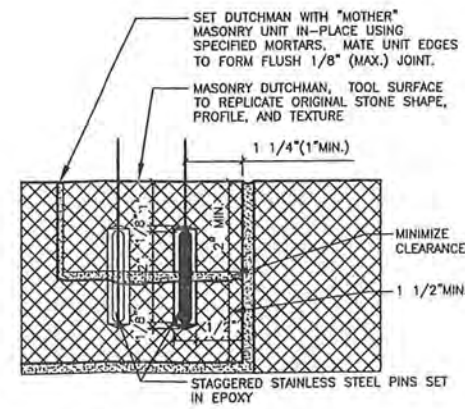
NORTH ELEVATION



1 REPOINTING AND TYPICAL RAKED JOINT
008 NOT TO SCALE



2 MASONRY PATCHING (LESS 2")
003 HALF SCALE



3 DUTCHMAN DETAIL
005 HALF SCALE

LEGEND

- INSTALL PATCH
- INSTALL DUTCHMAN
- CRACK
- REPOINT JOINT
- TREATMENT AREA
- REPLACE UNIT
- RESET UNIT

NOTE: GRAPHIC INDICATIONS OF WORK SPECIFIED ON DRAWINGS ARE INTENDED TO GIVE LOCATION OF REPAIR AND APPROXIMATE SIZE OF REPAIR ONLY. ALL WORK SHOULD BE FIELD VERIFIED.

PROGRESS NOT FOR CONSTRUCTION



REMOVE TREE TO HALT FURTHER INTERIOR STRUCTURAL DAMAGE

DISMANTLE AND REASSEMBLE GRANITE RETAINING WALL. INSTALL CONCRETE WALL SHELF AND WEeping SYSTEM. SEE STRUCTURAL DRAWING S-1, DETAIL ___



MARBLE PANELS ARE HELD IN PLACE BY SLATS CUT IN GRANITE, SLID IN PLACE

WATER EXITING FROM INTERIOR AT BASE OF MARBLE SLABS



DISMANTLE AND REASSEMBLE GRANITE RETAINING WALL. INSTALL CONCRETE WALL SHELF AND WEeping SYSTEM. SEE STRUCTURAL DRAWING S-1, DETAIL ___



REINSTALL DECORATIVE GRANITE ARCH ON LINTEL USING STAINLESS STEEL ANCHOR. SEE STRUCTURAL DRAWING S-1, DETAIL ___



REPAIR CRACKED GRANITE: PIN IN PLACE OR INSTALL GRANITE DUTCHMAN (? ANY STRUCTURAL COMPONENT TO REPAIR EITHER WAY?)

GENERAL NOTES - CIVIL WAR MEMORIAL, NEWTON CEMETERY

G1 REMOVE SOILING FROM 100% OF GRANITE AND MARBLE MASONRY SURFACES USING DESIGNATED CHEMICAL CLEANERS AND LOW PRESSURE WATER RINSE. NOTE: METHODS FOR CLEANING WILL VARY ON DIFFERENT SURFACES DEPENDING ON THE LEVEL OF SOILING AND MATERIAL BEING CLEANED. IN ADDITION TO GENERAL CLEANING IS THE REMOVAL OF STAINING AND BIOLOGICAL GROWTH. CLEANING OF STONE SHALL OCCUR AFTER DISASSEMBLY AND PRIOR TO REASSEMBLY. REFER TO SPECIFICATION SECTION 040110.

G2 DISMANTLE, DOCUMENT, AND REBUILD ALL EXTERIOR COMPONENTS OF MASONRY. NEWLY REINSTALLED STONE SHALL BE LEVEL AND PLUMB. REFER TO SPECIFICATION SECTION 040140.



OPEN CONDITION AT REAR OF LINTEL; REGRADE



CIVIL WAR MEMORIAL - OVERALL SITE

REVISIONS:

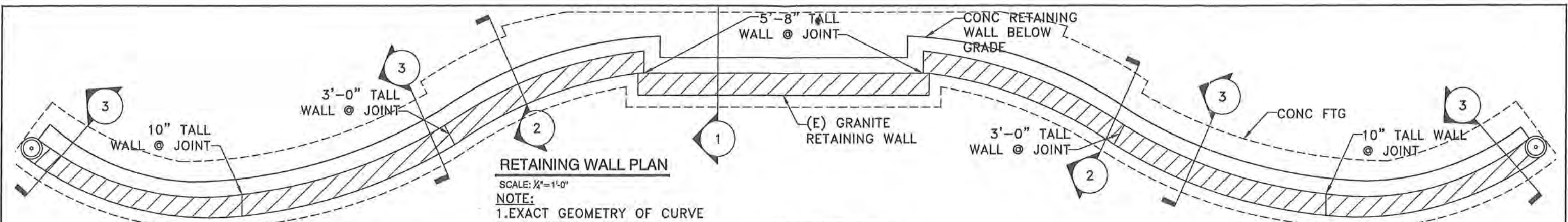
SCALE:
NOT TO SCALE

DATE:
JAN 07

DRAWN BY:
LNH

SHEET NO.

PROGRESS
NOT FOR
CONSTRUCTION

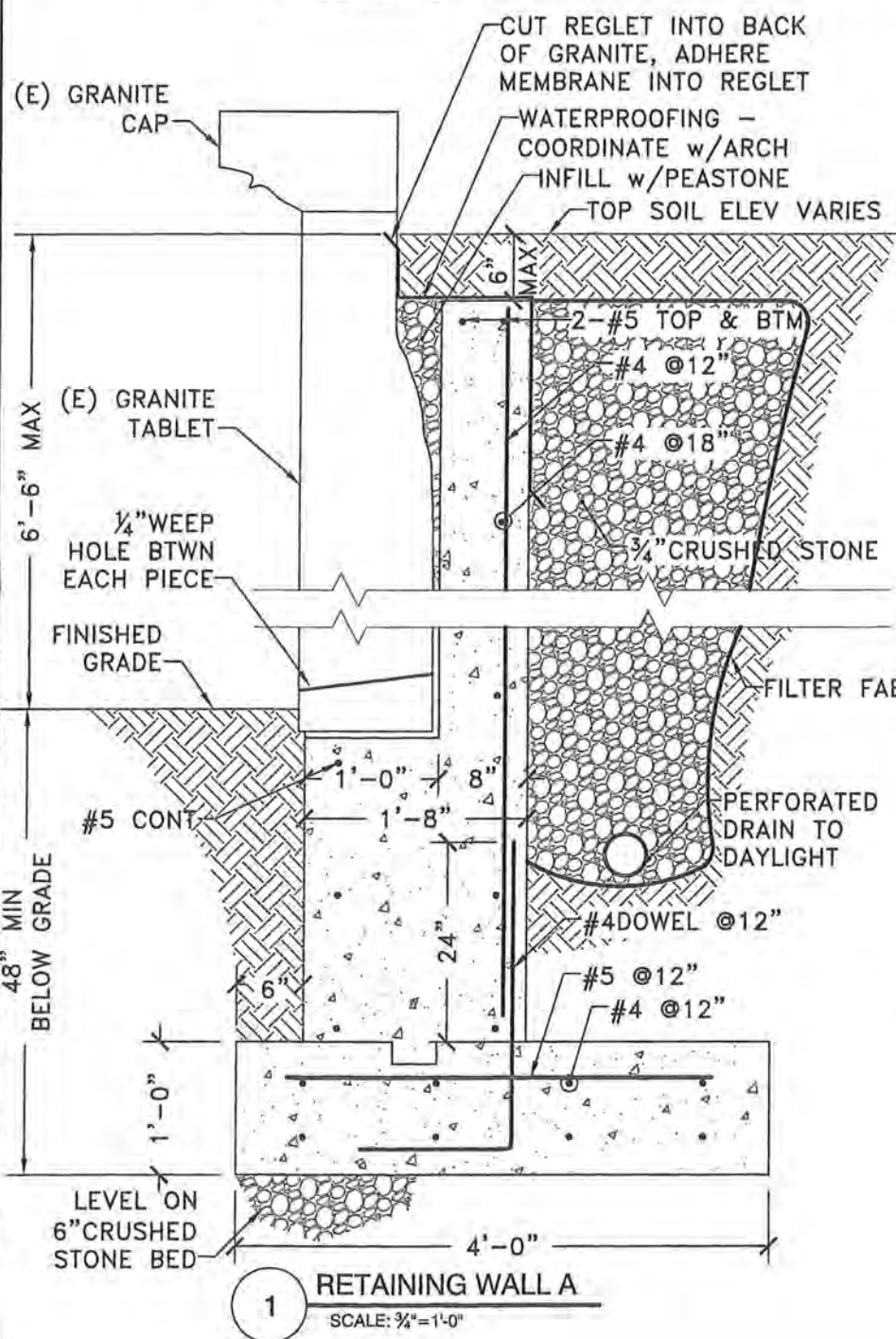


RETAINING WALL PLAN

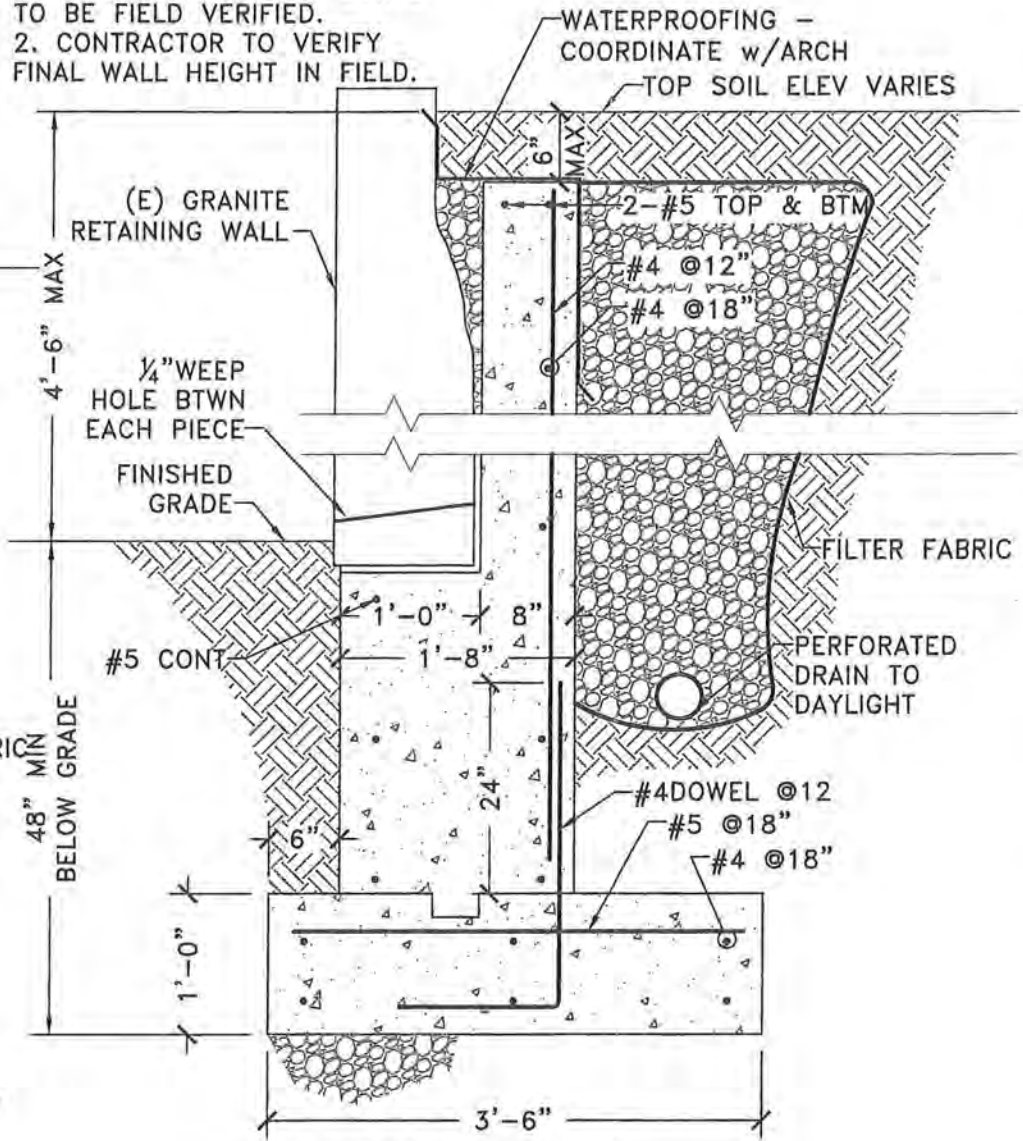
SCALE: 1/4"=1'-0"

NOTE:

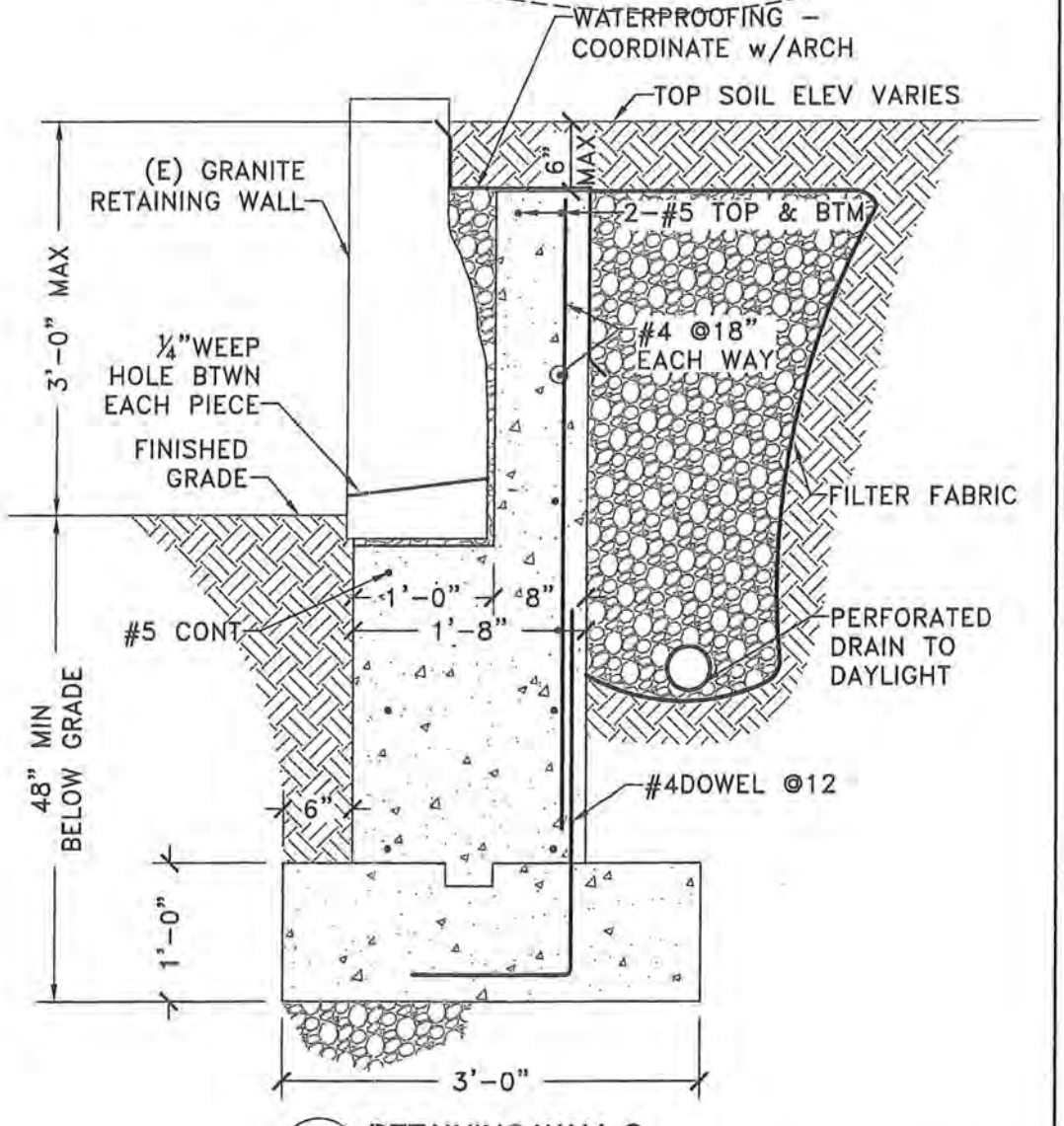
1. EXACT GEOMETRY OF CURVE TO BE FIELD VERIFIED.
2. CONTRACTOR TO VERIFY FINAL WALL HEIGHT IN FIELD.



1 RETAINING WALL A
SCALE: 3/4"=1'-0"



2 RETAINING WALL B
SCALE: 3/4"=1'-0"



3 RETAINING WALL C
SCALE: 3/4"=1'-0"

SIEGEL ASSOCIATES, INC. CONSULTING STRUCTURAL ENGINEERS 634 COMMONWEALTH AVENUE NEWTON CENTRE, MA 02459 PHONE: 617.244.1612 FAX: 617.244.1732	PROJECT: CIVIL WAR MONUMENT RESTORATION NEWTON, MA		PROJ # 205290
	TITLE: KEY PLAN & SECTIONS		DATE: 02-16-07 SCALE: AS NOTED
			SKS No. SKS-1