

1. THE CONTRACTOR AND SUB-CONTRACTORS ARE REQUIRED TO INSPECT THE SITE AND CONTRACT DOCUMENTS AND TO NOTIFY THE ARCHITECT OF ANY DISCREPANCIES OR INCONSISTENCIES IN THE DOCUMENTS PRIOR TO PROVIDING BID PRICES.  
 2. THE DRAWINGS ARE MERELY REPRESENTATIONAL AND DO NOT FREE THE CONTRACTOR OR SUB-CONTRACTORS FROM THE REQUIREMENT OF PERFORMING NORMALLY REQUIRED TASKS TO PERFORM A SAFE, GOOD-COMPLYING AND COMPLETE PROJECT.  
 3. FIELD MEASUREMENTS: THE CONTRACTOR SHALL TAKE ALL NECESSARY FIELD MEASUREMENTS PRIOR TO FABRICATION AND INSTALLATION OF WORK AND SHALL ASSUME COMPLETE RESPONSIBILITY FOR ACCURACY OF SAME. PRIOR TO CONSTRUCTION, THE CONTRACTOR IS RESPONSIBLE FOR CHECKING THE DIMENSIONS ON THE DRAWINGS AND NOTIFYING THE ARCHITECT OF ANY DISCREPANCIES WHICH ARE FOUND. NO MATERIALS SHALL BE ORDERED OR FABRICATED BASED ON DIMENSIONS SHOWN ON THE DRAWINGS. ALL DIMENSIONS MUST BE VERIFIED. NO DRAWINGS SHALL BE SCALED.  
 4. THE CONTRACTOR SHALL LAY OUT ALL NEW WALLS W/ CHALK FOR ARCHITECT APPROVAL PRIOR TO THE CONSTRUCTION OF ANY WALLS, TYPICAL.

**LOCUS PLAN** NOT TO SCALE

**CITY OF NEWTON WAR MEMORIAL ELEVATOR**

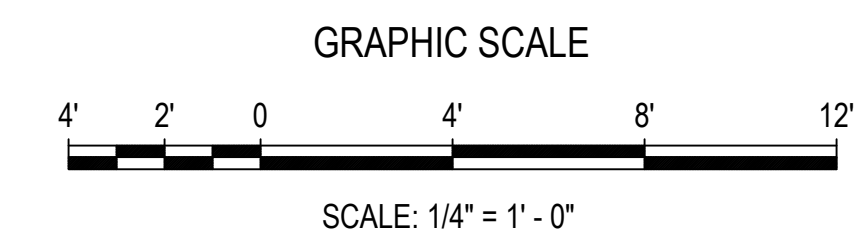
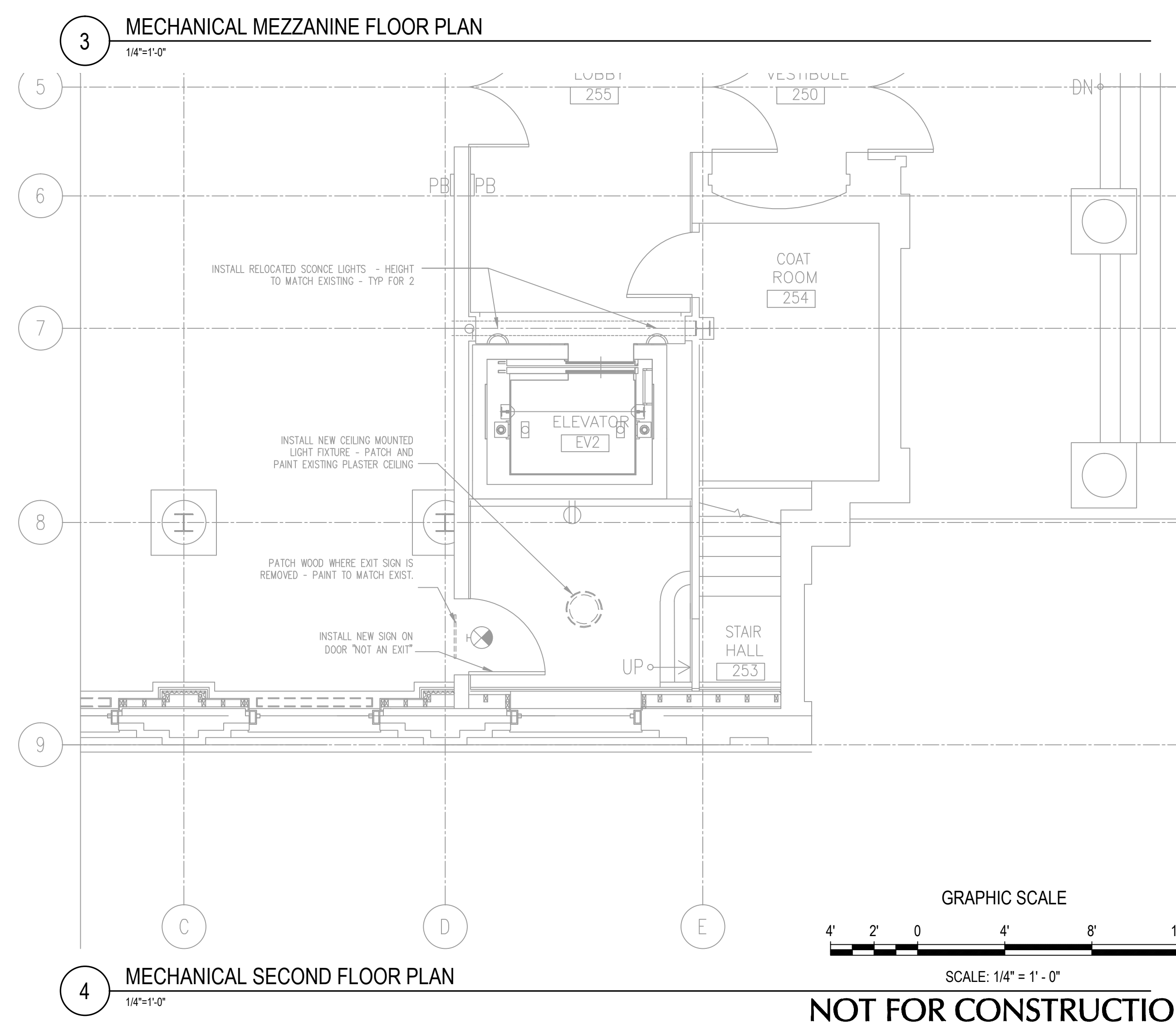
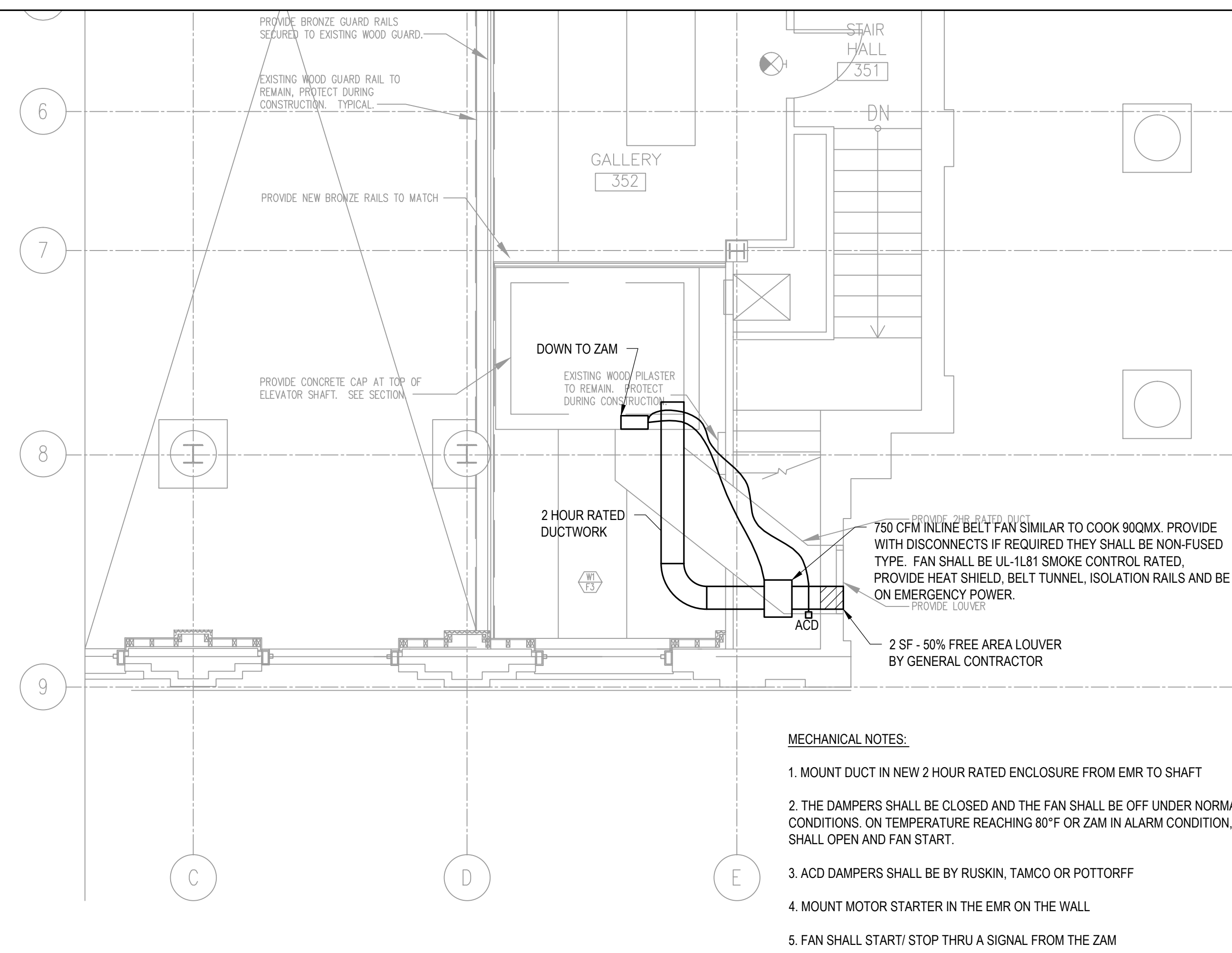
REVISION/DATE

DRAWN BY: DM CHECKED BY: PW

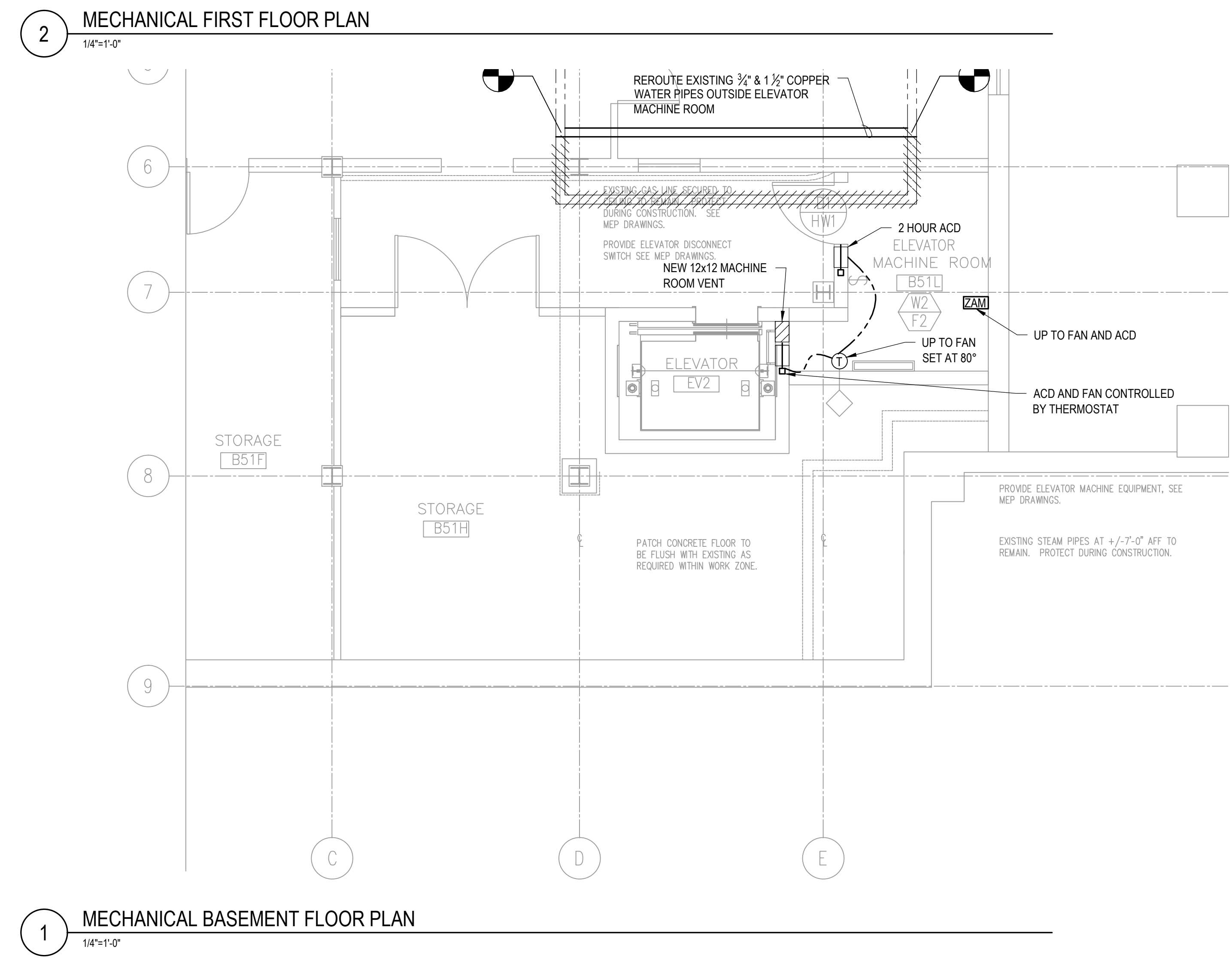
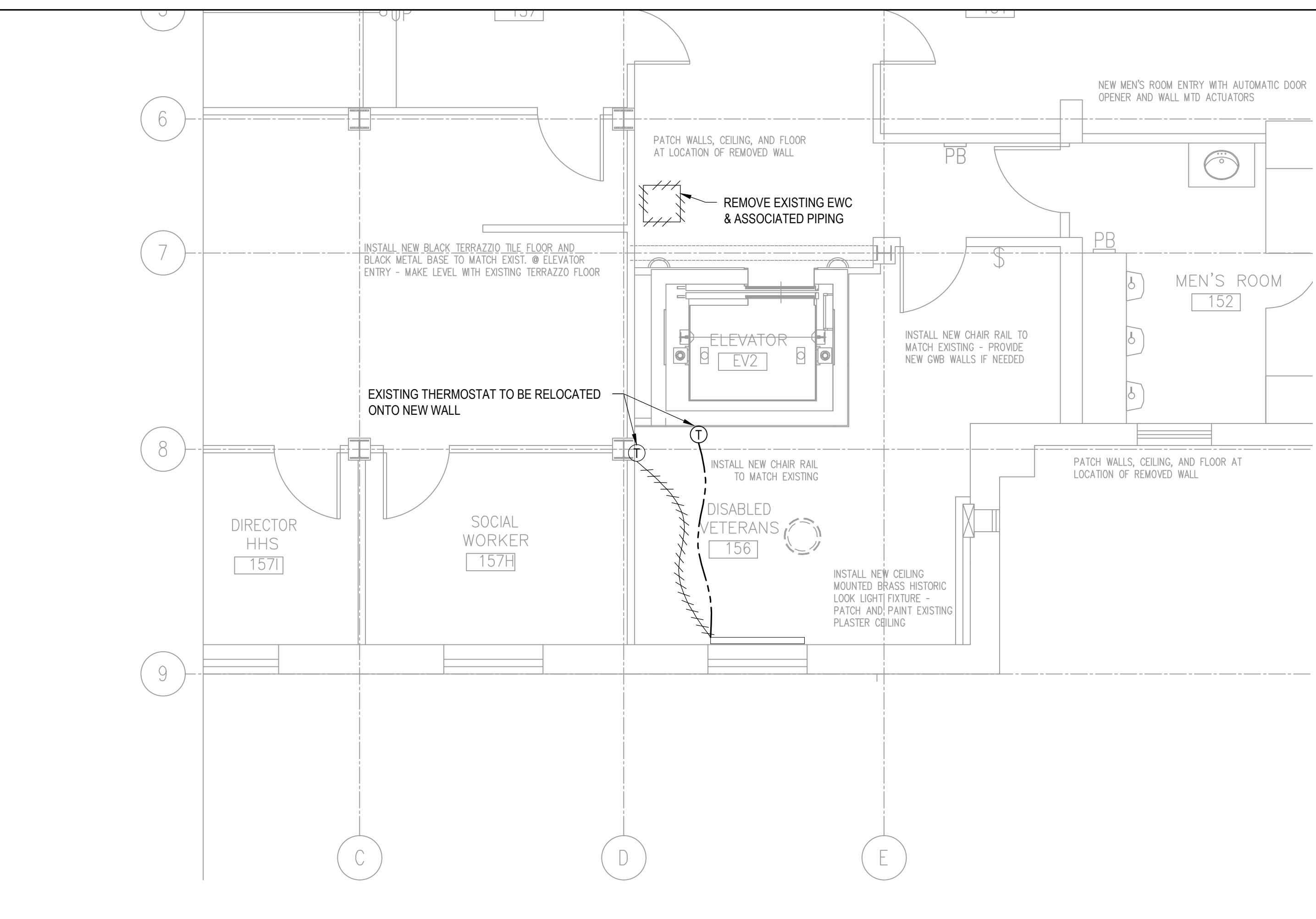
DATE: 10-09-13

**MECH. BASEMENT FIRST, SECOND, MEZZ FLOOR PLANS**

**M1**



**NOT FOR CONSTRUCTION**



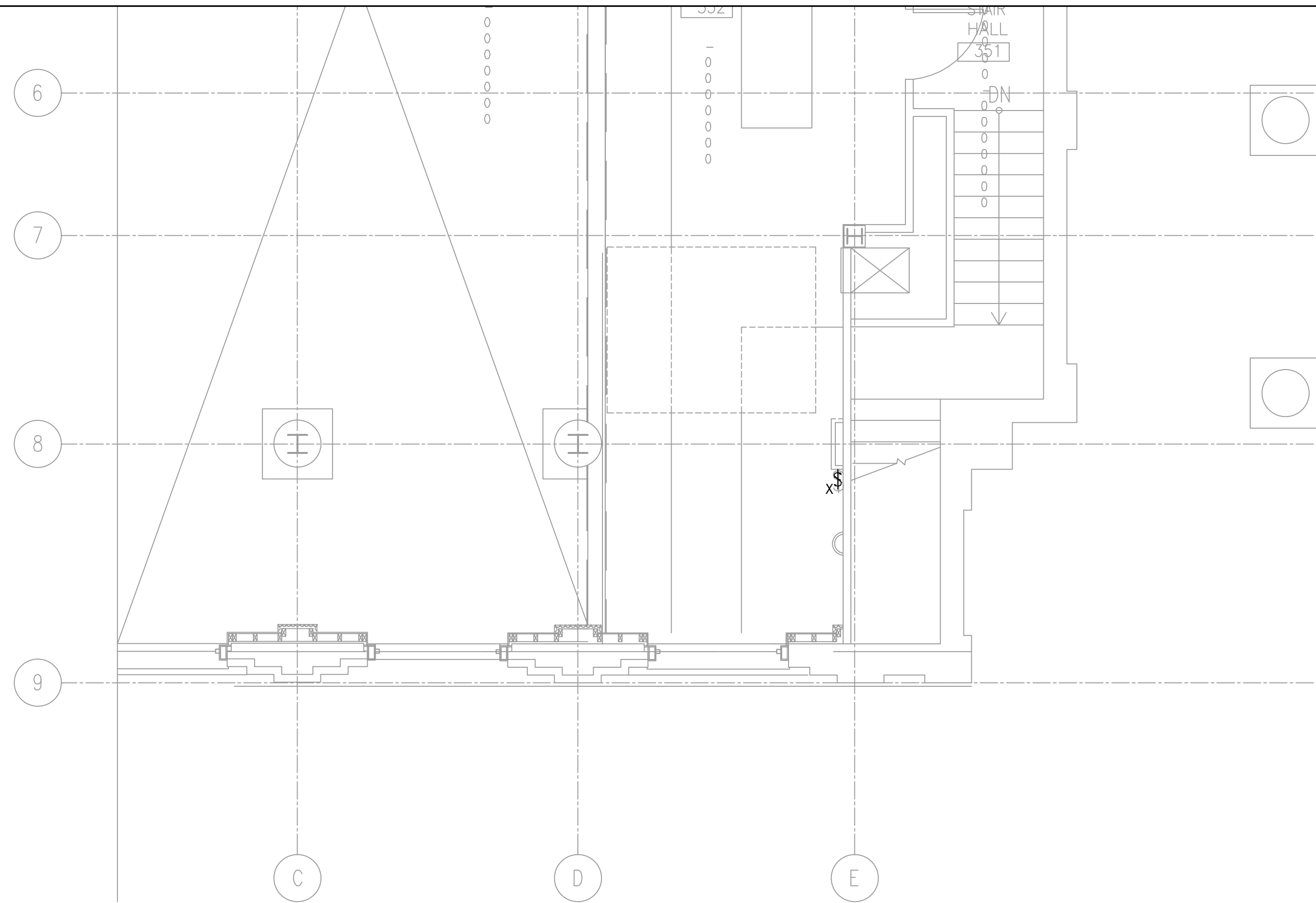
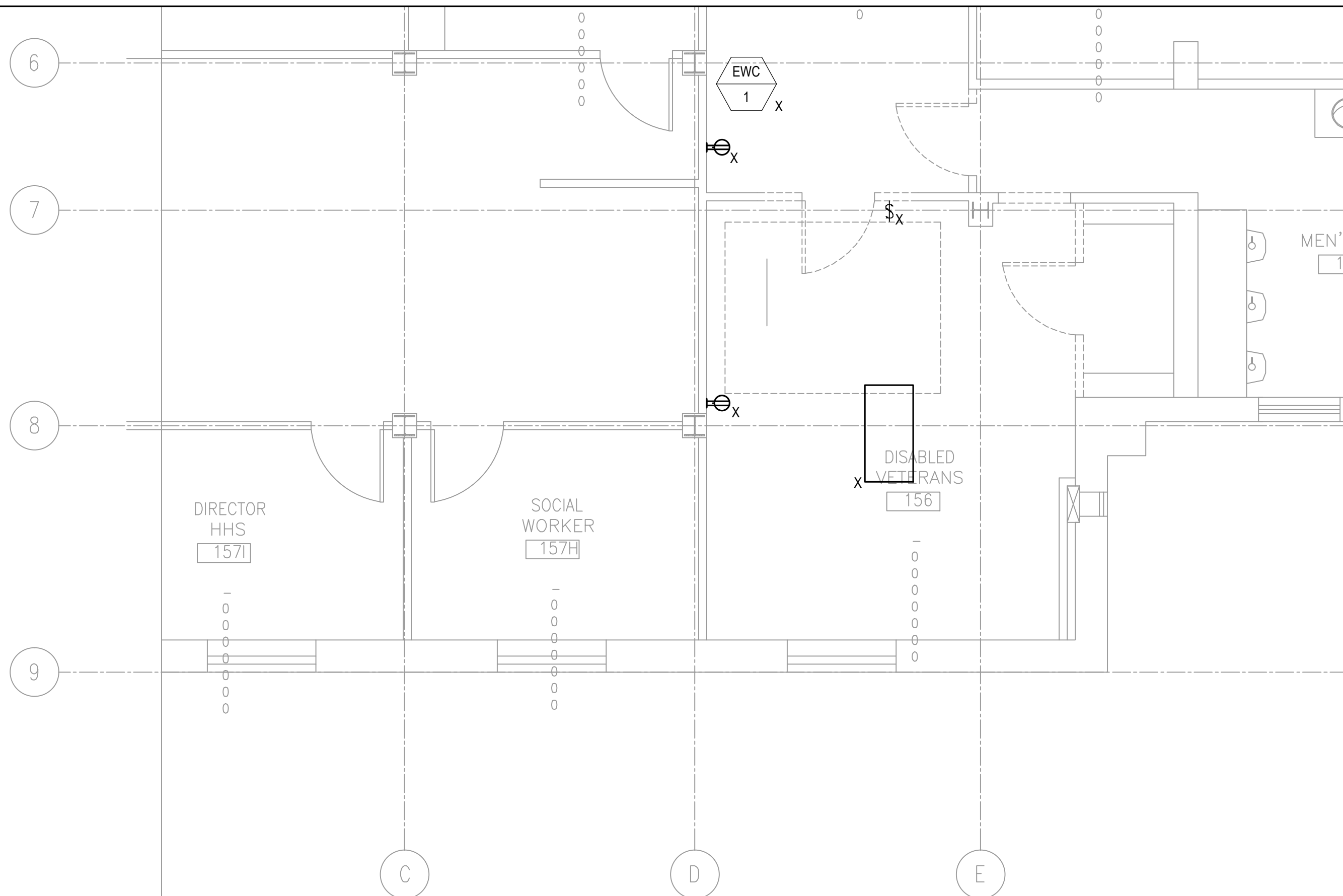
Oct 24, 2013 - 2:19pm P:\B13181310420000\_Newton\_City\_War\_Memorial\_Elevator\CAD\HVAC\SHEETS\3104\_M10.dwg User: usg03611

PROJECT ARCHITECT

**GOLDMAN REINDORF ARCHITECTS INC.**  
427 WATERTOWN STREET  
SUITE 102  
NEWTON, MA 02458

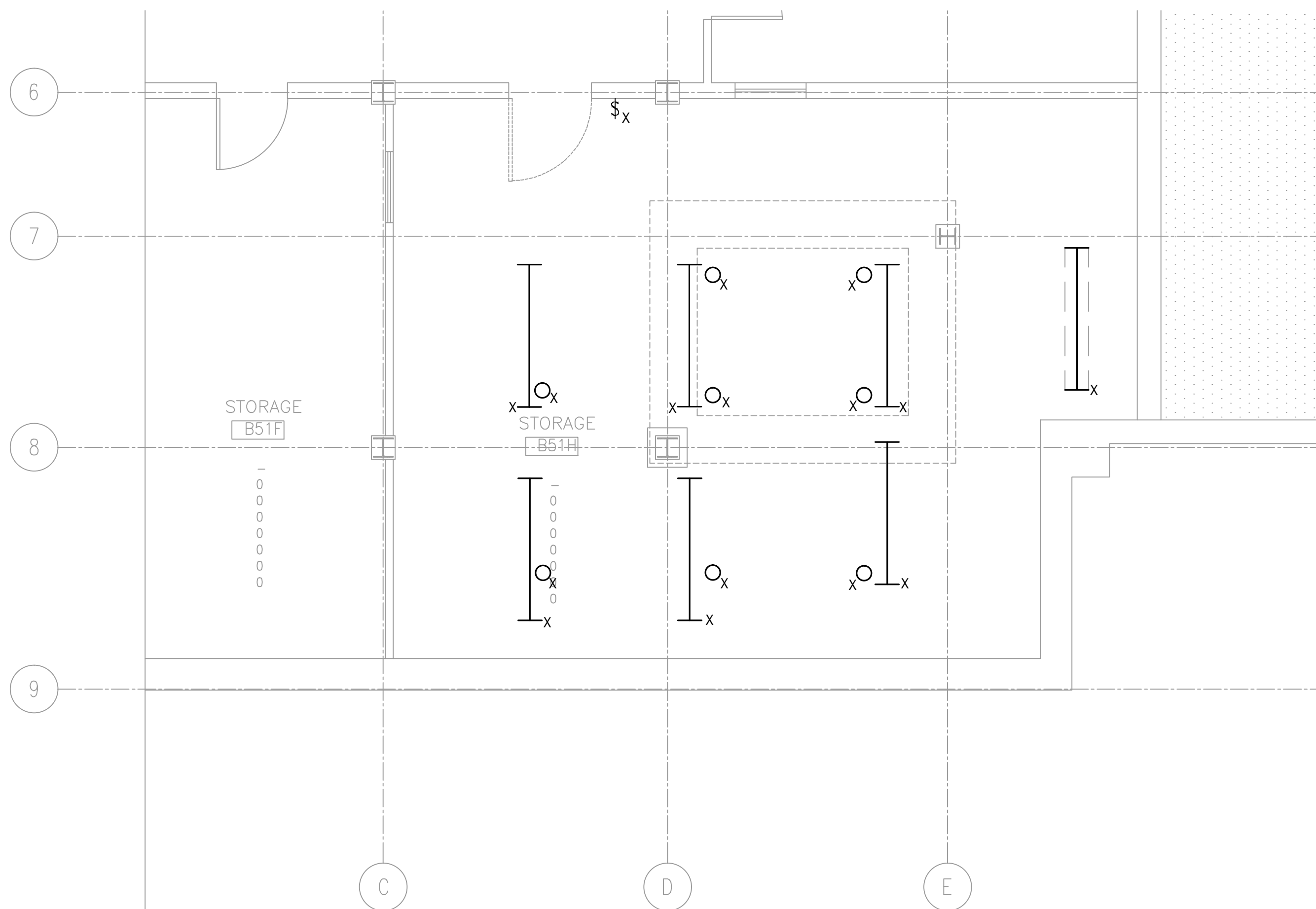
1. THE CONTRACTOR AND SUB-CONTRACTORS ARE REQUIRED TO INSPECT THE SITE AND CONTRACT DOCUMENTS AND TO NOTIFY THE ARCHITECT OF ANY DISCREPANCIES OR INCONSISTENCIES IN THE DOCUMENTS PRIOR TO PROVIDING BID PRICES.
2. THE DRAWINGS ARE MERELY REPRESENTATIONAL AND DO NOT FREE THE CONTRACTOR OR SUB-CONTRACTORS FROM THE REQUIREMENT OF PERFORMING NORMALLY REQUIRED TASKS TO PERFORM A SAFE, GOOD-COMPLING AND COMPLETE PROJECT.
3. FIELD MEASUREMENTS: THE CONTRACTOR SHALL TAKE ALL NECESSARY FIELD MEASUREMENTS PRIOR TO FABRICATION AND INSTALLATION OF WORK AND SHALL ASSUME COMPLETE RESPONSIBILITY FOR ACCURACY OF SAME. PRIOR TO CONSTRUCTION, THE CONTRACTOR IS RESPONSIBLE FOR CHECKING THE DIMENSIONS ON THE DRAWINGS AND NOTIFYING THE ARCHITECT OF ANY DISCREPANCIES WHICH ARE FOUND. NO MATERIALS SHALL BE ORDERED OR FABRICATED BASED ON DIMENSIONS SHOWN ON THE DRAWINGS. ALL DIMENSIONS MUST BE VERIFIED. NO DRAWINGS SHALL BE SCALED.
4. THE CONTRACTOR SHALL LAY OUT ALL NEW WALLS W/ CHALK FOR ARCHITECT APPROVAL PRIOR TO THE CONSTRUCTION OF ANY WALLS, TYPICAL.

**LOCUS PLAN** NOT TO SCALE



**2 ELECTRICAL FIRST FLOOR DEMOLITION PLAN**

1/4"=1'-0"

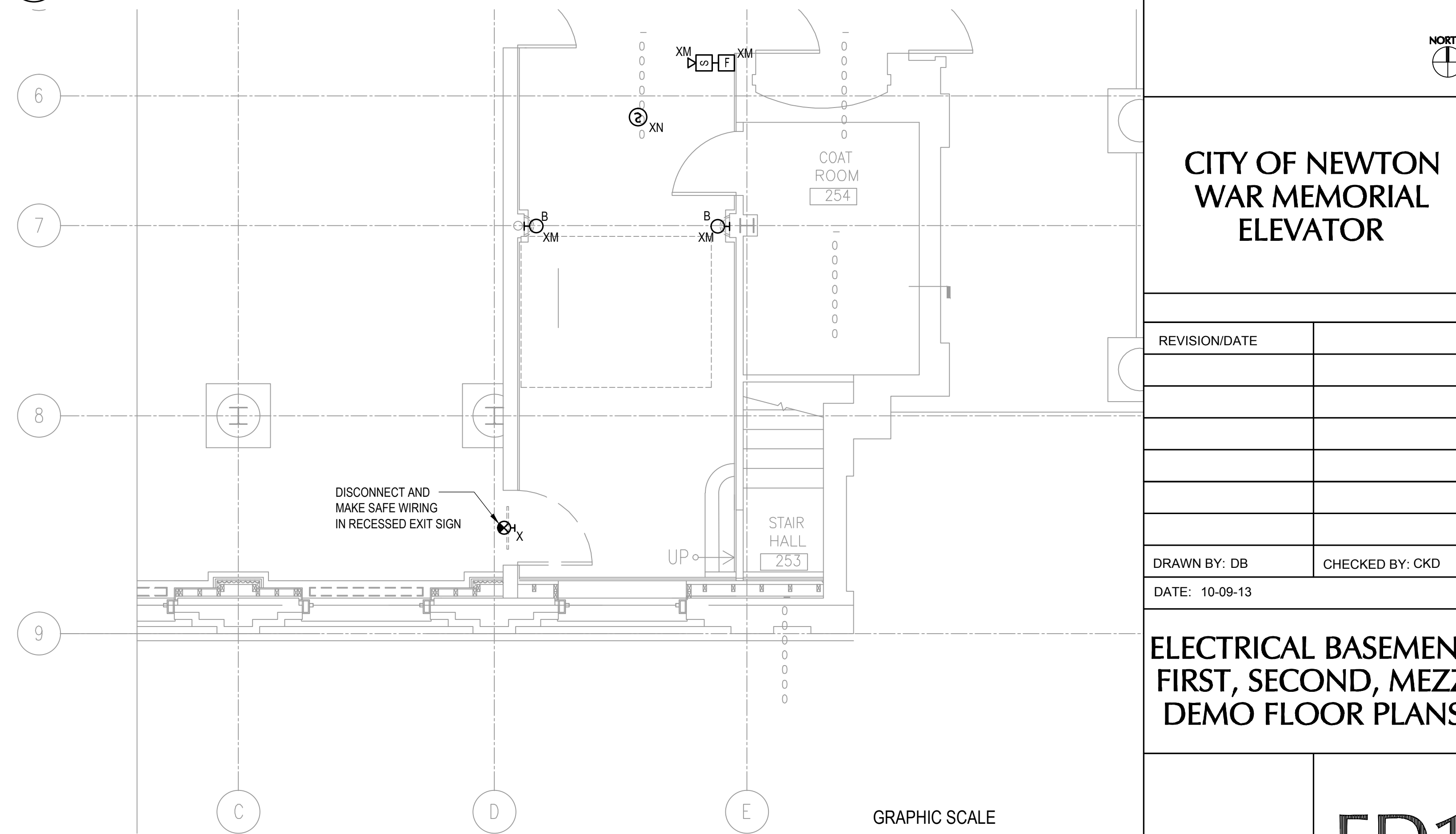


**1 ELECTRICAL BASEMENT FLOOR DEMOLITION PLAN**

1/4"=1'-0"

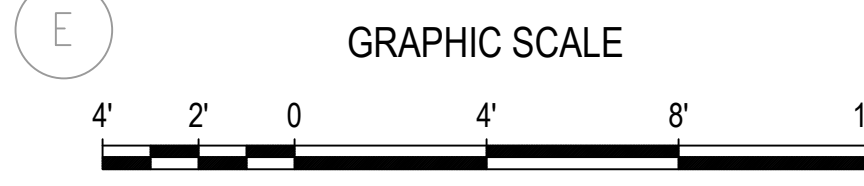
**3 ELECTRICAL MEZZANINE FLOOR DEMOLITION PLAN**

1/4"=1'-0"



**4 ELECTRICAL SECOND FLOOR DEMOLITION PLAN**

1/4"=1'-0"



SCALE: 1/4" = 1' - 0"

**NOT FOR CONSTRUCTION**

**CITY OF NEWTON WAR MEMORIAL ELEVATOR**

REVISION/DATE

DRAWN BY: DB CHECKED BY: CKD

DATE: 10-09-13

**ELECTRICAL BASEMENT FIRST, SECOND, MEZZ DEMO FLOOR PLANS**

**ED1**

COPYRIGHT 2013 © GOLDMAN REINDORF ARCHITECTS INC.

**GENERAL NOTES:**

1. PROVIDE WIRING FOR ELEVATOR CAB LIGHTING TO ELEVATOR CONTROLLER.
2. PROVIDE FOR ELEVATOR POWER TO ELEVATOR CONTROLLER AND FROM ELEVATOR CONTROLLER TO ELEVATOR MOTOR.
3. COORDINATE EXACT LOCATION OF ALL ELECTRICAL EQUIPMENT IN THE ELEVATOR PIT, MACHINE ROOM AND TOP OF SHAFT WITH ELEVATOR CONTRACTOR.
4. FIXTURE TYPE "A" SHALL BE ENCLOSED AND GASKETED FIBERGLASS 4 FT. 2 LAMP 32W T8 FLUORESCENT WITH ELECTRONIC PROGRAMMED START BALLAST WITH LESS THAN 10% THD AND INDIVIDUAL FUSING: COLUMBIA #LUN 4232 EPUDR GLR OR APPROVED EQUAL.
5. PROVIDE FIRESTOPPING FOR ALL NEW AND EXISTING WALL PENETRATIONS IN ALL ROOMS INDICATING NEW WORK IN THIS CONTRACT.
6. PROVIDE TELEPHONE OUTLET.

**FIRE ALARM NOTES:**

1. PROVIDE FIRE ALARM ZAMS AND PROGRAMMING FOR "ELEVATOR RECALL" AND "ELEVATOR ALTERNATE FLOOR RECALL".
2. PROVIDE ZAM AND WIRE TO ELEVATOR CONTROLLER TO OPERATE "FIREFIGHTERS HAT" IF ELEVATOR MACHINE ROOM SMOKE DETECTORS ARE IN ALARM.
3. PROVIDE ZAM TO OPERATE ELEVATOR VENT AUTOMATIC CONTROL DAMPERS (ACD) AND ELEVATOR EXHAUST FAN AT TOP OF SHAFT.
4. PROVIDE NEW FIRE ALARM VISUAL DEVICE IN ELEVATOR M/C ROOM.
5. PRETEST AND FINAL TESTING OF FIRE ALARM ELEVATOR INTERFACES TO SATISFACTION OF LOCAL AUTHORITIES HAVING JURISDICTION (A/H'S).

1. THE CONTRACTOR AND SUB-CONTRACTORS ARE REQUIRED TO INSPECT THE SITE AND CONTRACT DOCUMENTS AND TO NOTIFY THE ARCHITECT OF ANY DISCREPANCIES OR INCONSISTENCIES IN THE DOCUMENTS PRIOR TO PROVIDING BID PRICES.  
 2. THE DRAWINGS ARE MERELY REPRESENTATIONAL AND DO NOT FREE THE CONTRACTOR OR SUB-CONTRACTORS FROM THE REQUIREMENT OF PERFORMING NORMALLY REQUIRED TASKS TO PERFORM A SAFE, GOOD-COMPLYING AND COMPLETE PROJECT.  
 3. FIELD MEASUREMENTS: THE CONTRACTOR SHALL TAKE ALL NECESSARY FIELD MEASUREMENTS PRIOR TO FABRICATION AND INSTALLATION OF WORK AND SHALL ASSUME COMPLETE RESPONSIBILITY FOR ACCURACY OF SAME. PRIOR TO CONSTRUCTION, THE CONTRACTOR IS RESPONSIBLE FOR CHECKING THE DIMENSIONS ON THE DRAWINGS AND NOTIFYING THE ARCHITECT OF ANY DISCREPANCIES WHICH ARE FOUND. NO MATERIALS SHALL BE ORDERED OR FABRICATED BASED ON DIMENSIONS SHOWN ON THE DRAWINGS. ALL DIMENSIONS MUST BE VERIFIED. NO DRAWINGS SHALL BE SCALED.  
 4. THE CONTRACTOR SHALL LAY OUT ALL NEW WALLS W/ CHALK FOR ARCHITECT APPROVAL PRIOR TO THE CONSTRUCTION OF ANY WALLS, TYPICAL.

**LOCUS PLAN NOT TO SCALE**

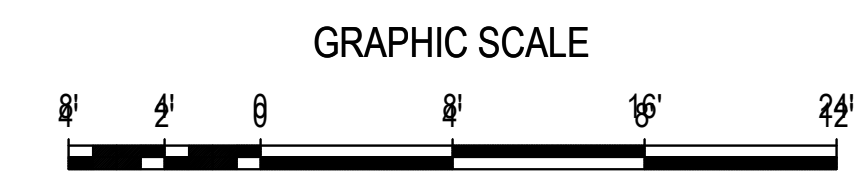
**CITY OF NEWTON WAR MEMORIAL ELEVATOR**

REVISION/DATE	
DRAWN BY: DB	CHECKED BY: CKD
DATE: 10-09-13	

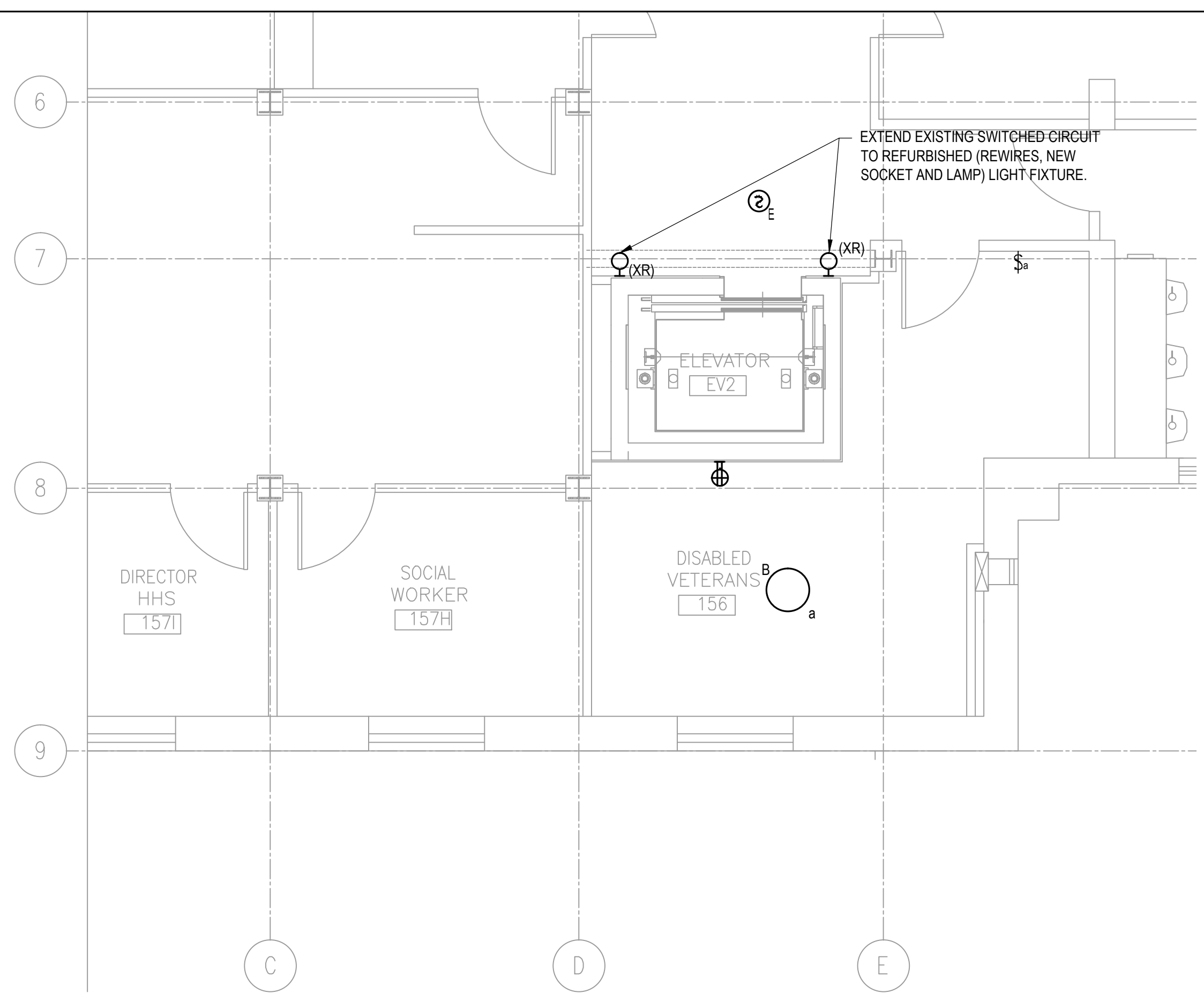
**ELECTRICAL BASEMENT FIRST, SECOND, MEZZ FLOOR PLANS**

**E1**

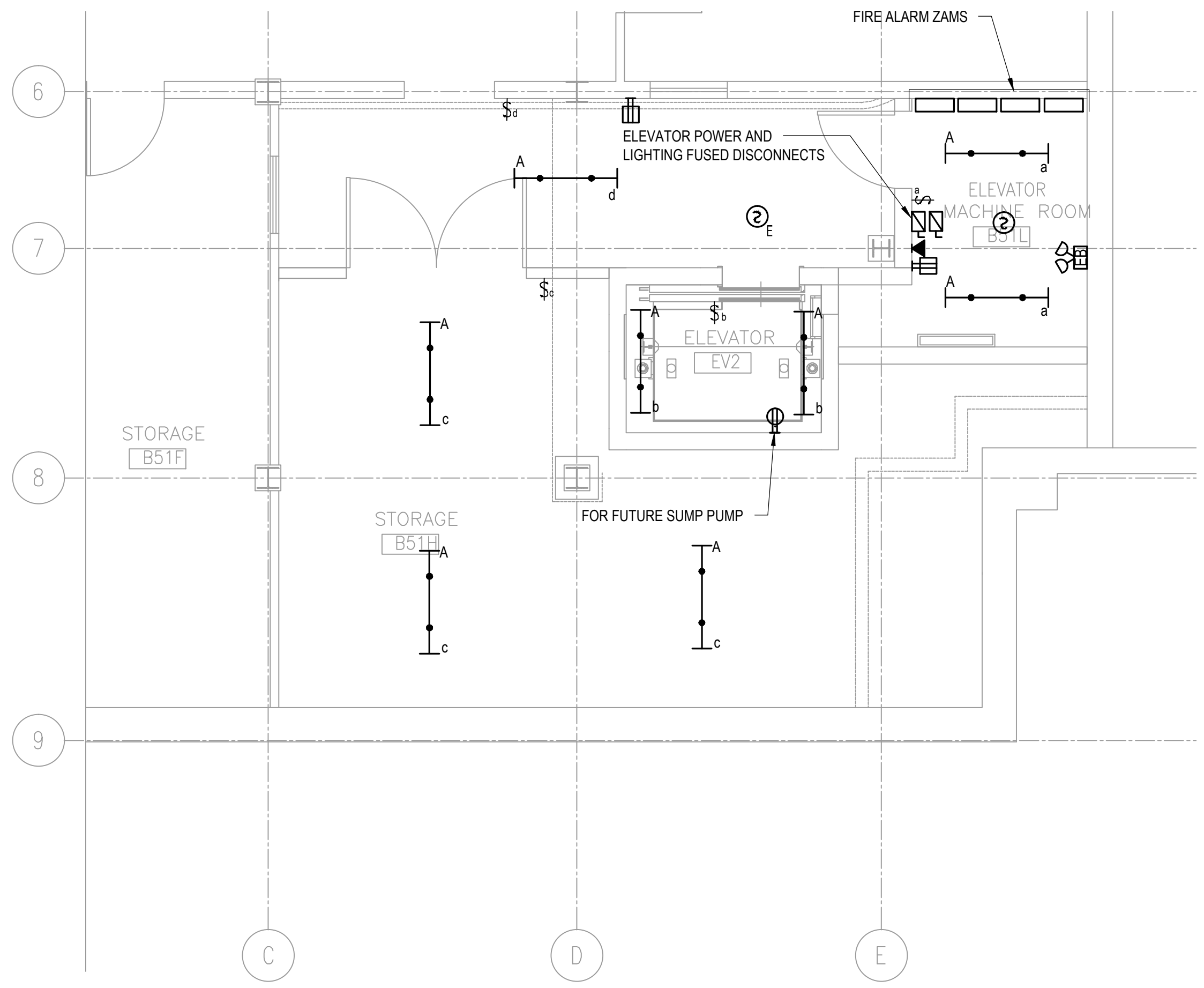
ELECTRICAL LEGEND	
	LIGHTING FIXTURE; CEILING MOUNTED
	LIGHTING FIXTURE; WALL MOUNTED
	LIGHTING FIXTURE, SIZE APPROXIMATELY AS SHOWN, CEILING MOUNTED
	EXIT SIGN; ARROWS AS SHOWN, ILLUMINATED FACE AS INDICATED BY SHADING; WALL MOUNTED
	EXIT SIGN; ARROWS AS SHOWN, ILLUMINATED FACE AS INDICATED BY SHADING; CEILING MOUNTED
	EMERGENCY BATTERY UNIT (EBU) QUANTITY OF HEADS AS INDICATED
	a = LOWER CASE INDICATES SWITCH CONTROL
	TEL/DATA OUTLET
	SINGLE POLE SWITCH
	DUPLEX RECEPTACLE OUTLET: 125V; WALL MOUNTED
	DUPLEX RECEPTACLE OUTLET: 125V; GROUND FAULT INTERRUPTER; WALL MOUNTED
	DOUBLE DUPLEX RECEPTACLE OUTLET: 125V; WALL MOUNTED
	MANUAL PULL STATION
	AREA SMOKE DETECTOR, CEILING MOUNTED "E" INDICATED ELEVATOR RECALL
	FIRE ALARM SPEAKER; WALL MOUNTED
	FIRE ALARM ZAM
	HEAVY DUTY DISCONNECT SWITCH
	HEAVY DUTY FUSED DISCONNECT SWITCH
	EXISTING ITEM TO BE REMOVED AND CIRCUIT PULLED BACK TO NEXT ACTIVE OUTLET OR BACK TO PANEL.
	EXISTING ITEM TO BE REMOVED AND NEW ITEM AS SPECIFIED INSTALLED ON EXISTING OUTLET, RECONNECT TO EXISTING CIRCUIT
	EXISTING ITEM TO BE REMOVED AND RELOCATED.
	EXISTING ITEM TO BE REMOVED, WIRING PROTECTED AND ITEM REINSTALLED IN EXISTING LOCATION.
	ARROW SIGNIFIES BREAKER SIZE AND HOMERUN TO PANEL NOTED. REFER TO WIRING SCHEDULE FOR CORRESPONDING WIRE SIZE. (IE: 3/4" 4#10 & #10 GND)



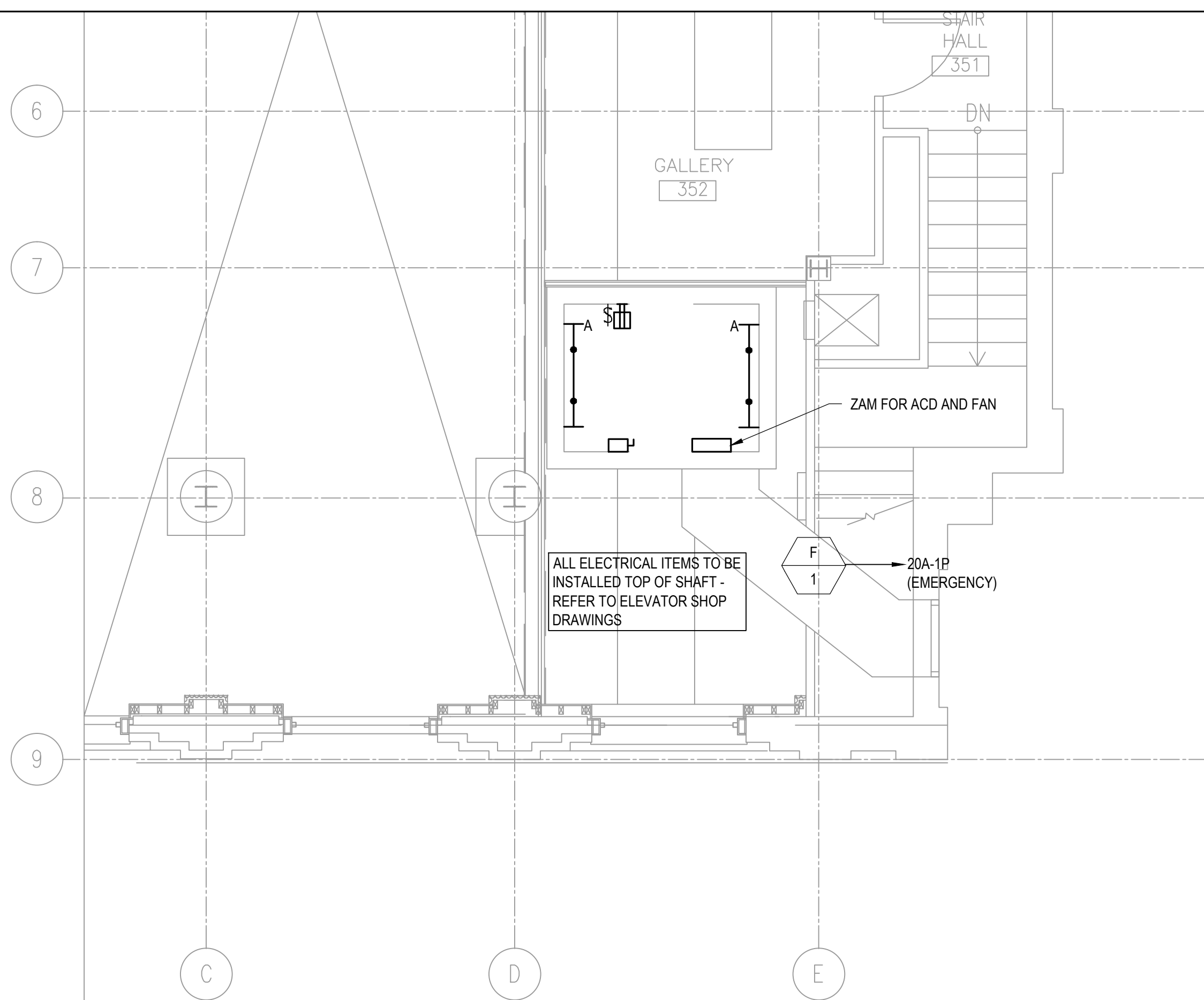
**NOT FOR CONSTRUCTION**



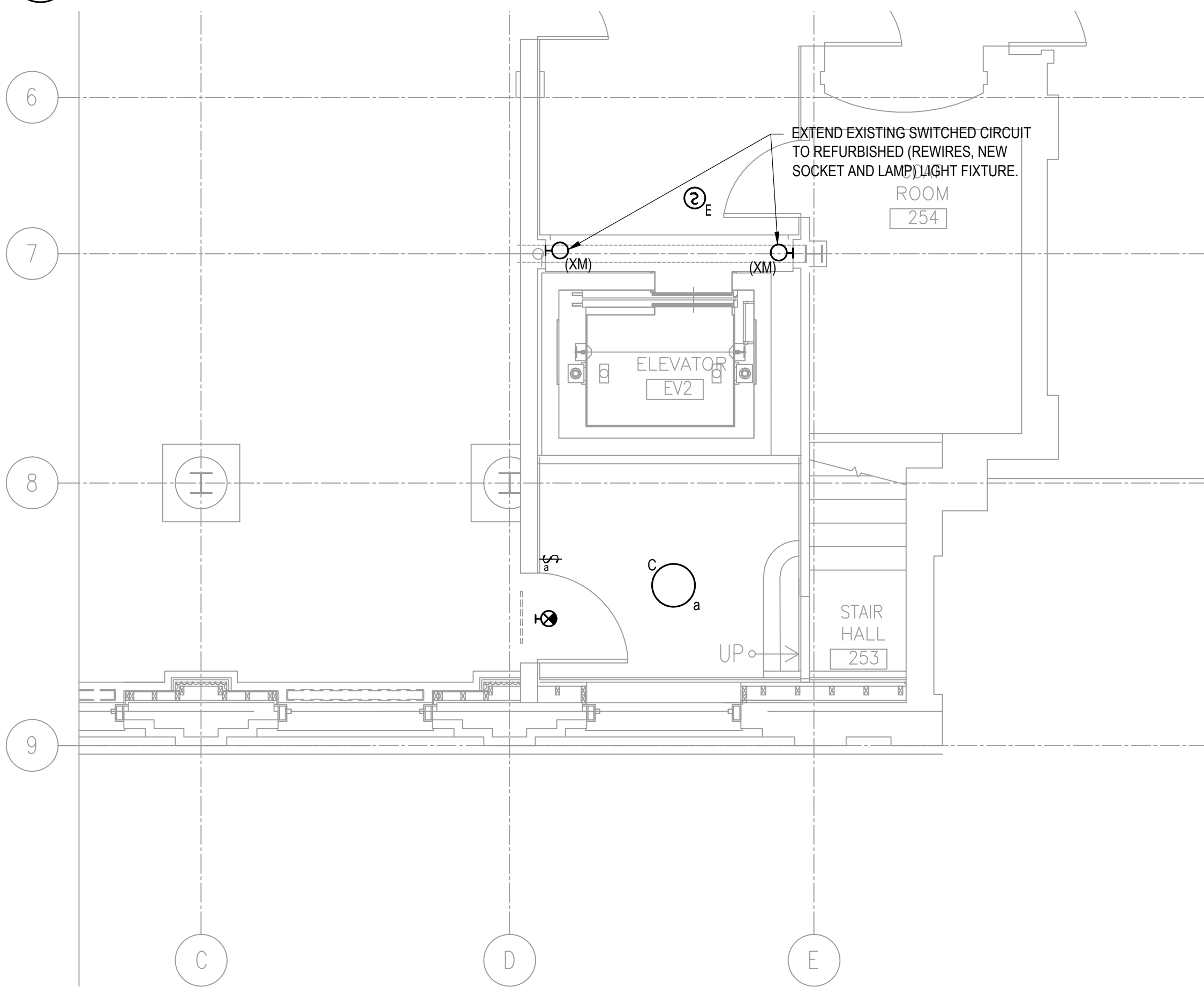
**2 ELECTRICAL FIRST FLOOR PLAN**  
 1/4"=1'-0"



**1 ELECTRICAL BASEMENT FLOOR PLAN**  
 1/4"=1'-0"



**3 ELECTRICAL MEZZANINE FLOOR PLAN**  
 1/4"=1'-0"



**4 ELECTRICAL SECOND FLOOR PLAN**  
 1/4"=1'-0"

Oct 24, 2013 - 2:19pm P:\B13181310420000\_Newton\_City\_War\_Memorial\_Elevator\CAD\ELECTRICAL\SHEETS\31042\_E1.dwg User: usg03611

1. THE CONTRACTOR AND SUB-CONTRACTORS ARE REQUIRED TO INSPECT THE SITE AND CONTRACT DOCUMENTS AND TO NOTIFY THE ARCHITECT OF ANY DISCREPANCIES OR INCONSISTENCIES IN THE DOCUMENTS PRIOR TO PROVIDING BID PRICES.
2. THE DRAWINGS ARE MERELY REPRESENTATIONAL AND DO NOT FREE THE CONTRACTOR OR SUB-CONTRACTORS FROM THE REQUIREMENT OF PERFORMING NORMALLY REQUIRED TASKS TO PERFORM A SAFE, CODE-COMPLYING AND COMPLETE PROJECT.
3. FIELD MEASUREMENTS: THE CONTRACTOR SHALL TAKE ALL NECESSARY FIELD MEASUREMENTS PRIOR TO FABRICATION AND INSTALLATION OF WORK AND SHALL ASSUME COMPLETE RESPONSIBILITY FOR ACCURACY OF SAME. PRIOR TO CONSTRUCTION, THE CONTRACTOR IS RESPONSIBLE FOR CHECKING THE DIMENSIONS ON THE DRAWINGS AND NOTIFYING THE ARCHITECT OF ANY DISCREPANCIES WHICH ARE FOUND. NO MATERIALS SHALL BE ORDERED OR FABRICATED BASED ON DIMENSIONS SHOWN ON THE DRAWINGS. ALL DIMENSIONS MUST BE VERIFIED. NO DRAWINGS SHALL BE SCALED.
4. THE CONTRACTOR SHALL LAY OUT ALL NEW WALLS W/ CHALK FOR ARCHITECT APPROVAL PRIOR TO THE CONSTRUCTION OF ANY WALLS, TYPICAL.

LOCUS PLAN NOT TO SCALE



**CITY OF NEWTON  
WAR MEMORIAL  
ELEVATOR**

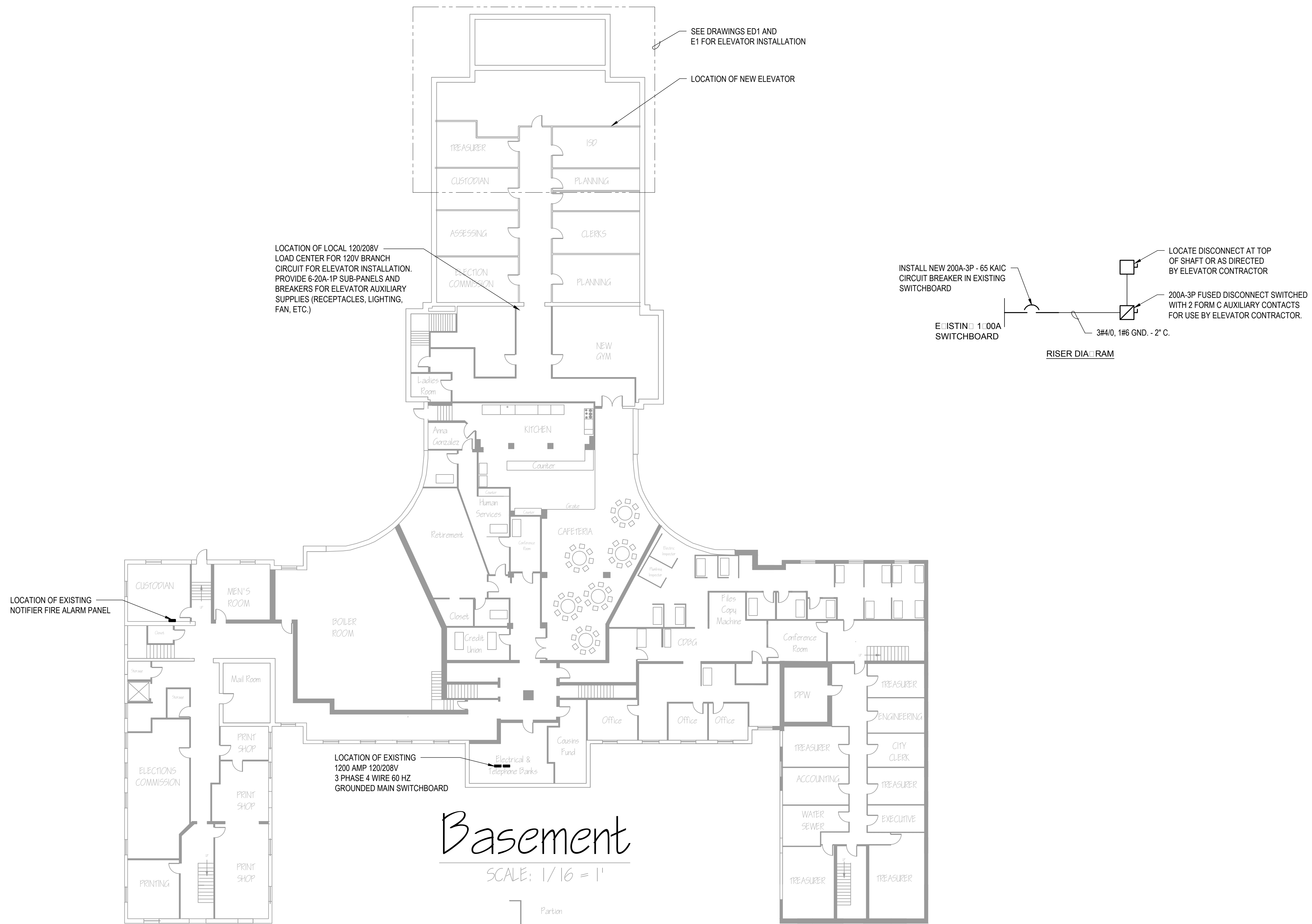
REVISION/DATE	

DRAWN BY: DB      CHECKED BY: PW

DATE: 10-09-13

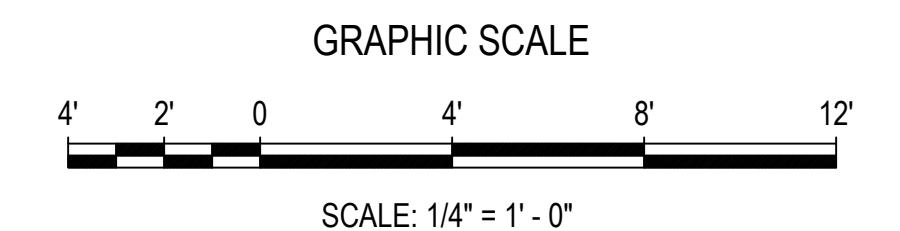
**ELECTRICAL  
BASEMENT**

**E2**



**Basement**

SCALE: 1/16" = 1'



**NOT FOR CONSTRUCTION**