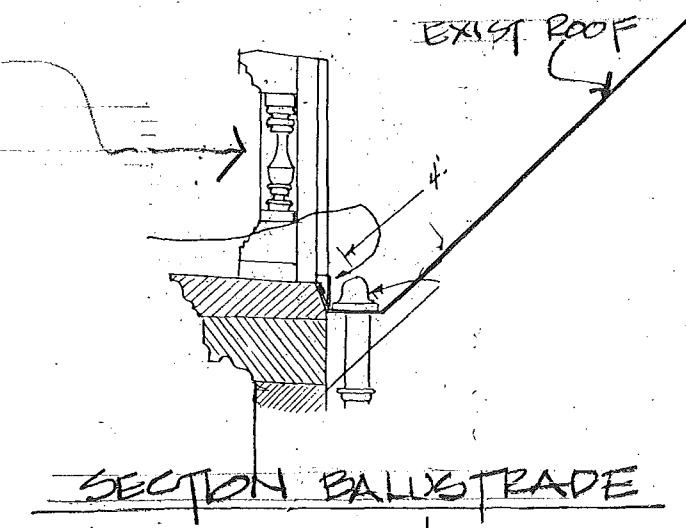
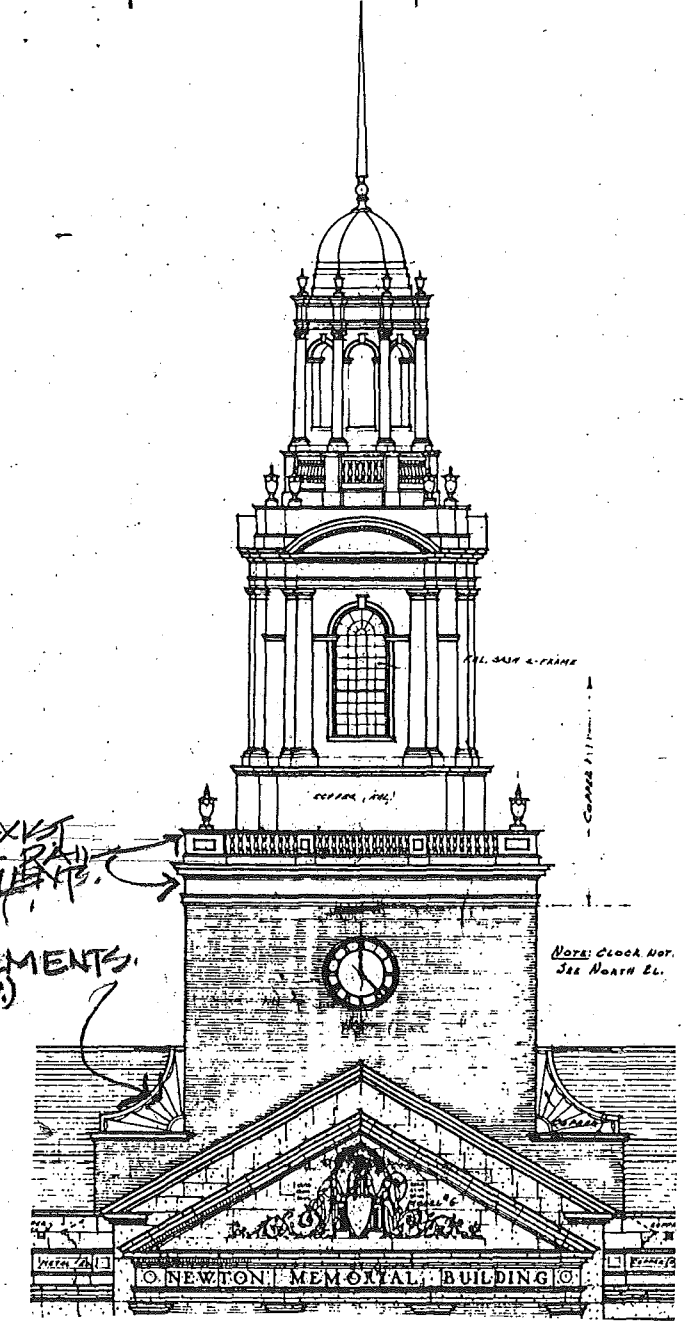


NOTE: PREPARE & PAINT EXISTING BALUSTRADE - 100 OZ LEAD COATED COPPER APPROX. 930 LH. FT 3'-0" HIGH. ALSO: PREPARE & PAINT EXISTING WAR MEMORIAL CUPOLA BASE BALUSTRADE SKIRT & FAN ELEMENTS



SECTION BALUSTRADE



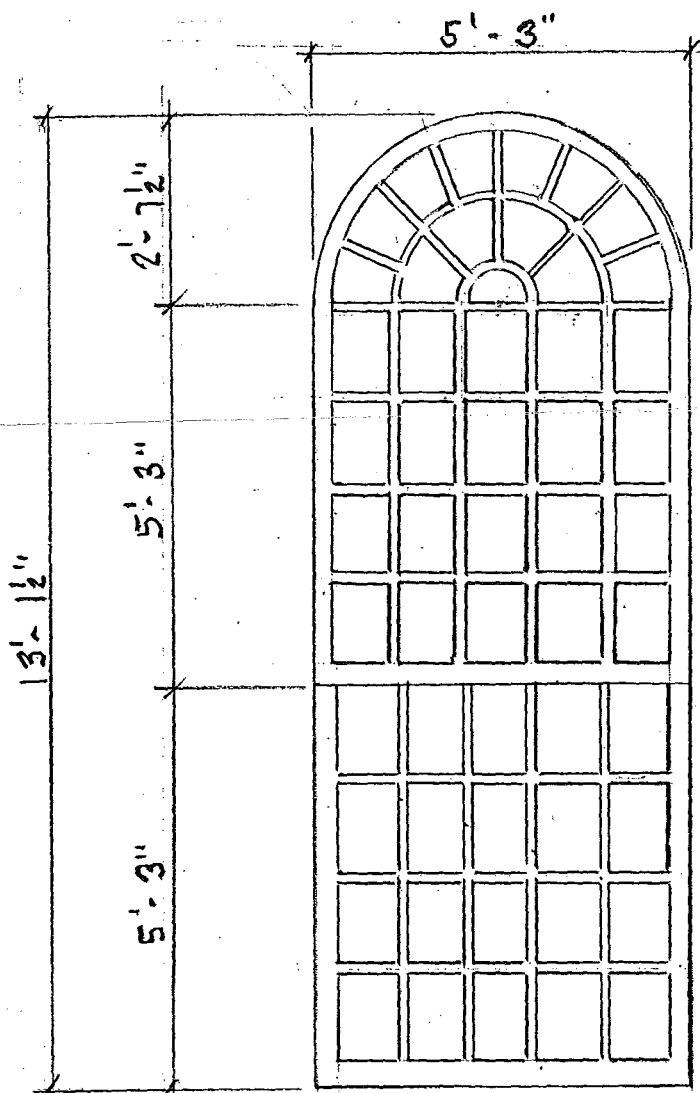
PARTIAL ELEVATION WAR MEMORIAL CUPOLA DWG B-1

CITY HALL - ROOF PLAN

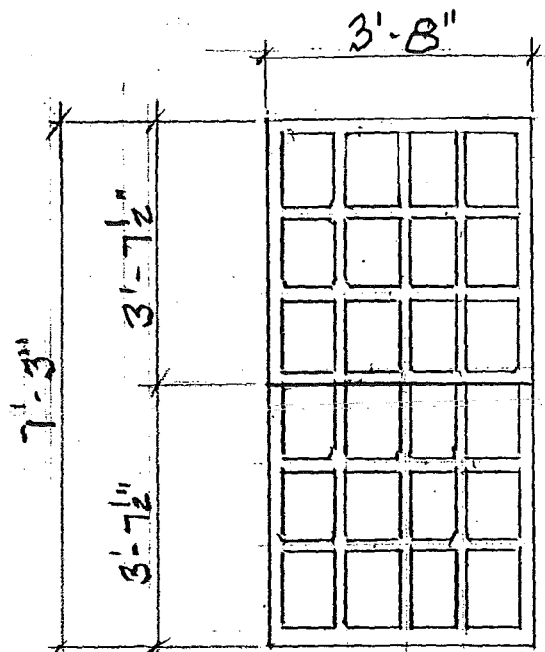
NEWTON MASSACHUSETTS
1000 COMMONWEALTH AVENUE

PROJECT OF THE PREPARATION & PAINTING OF CITY HALL & WAR MEMORIAL BALUSTRADE

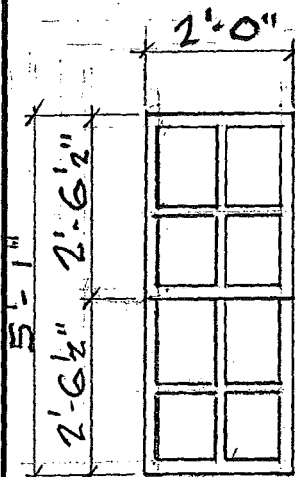
AHP.
11/8/03



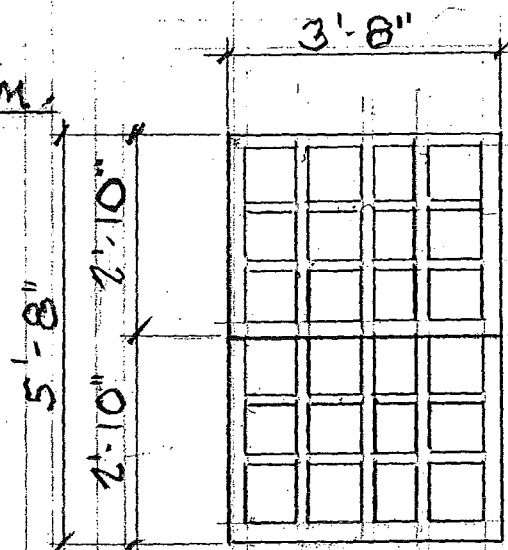
ALPERMANIC CHAM./WAR MEM.
TYPE - A
21-UNITS



CITY HALL STAIRWAY
COMM. AVE. & HAWKER ST.
TYPE - B
2-UNITS



LAVATORY
TYPE - C
2-UNITS



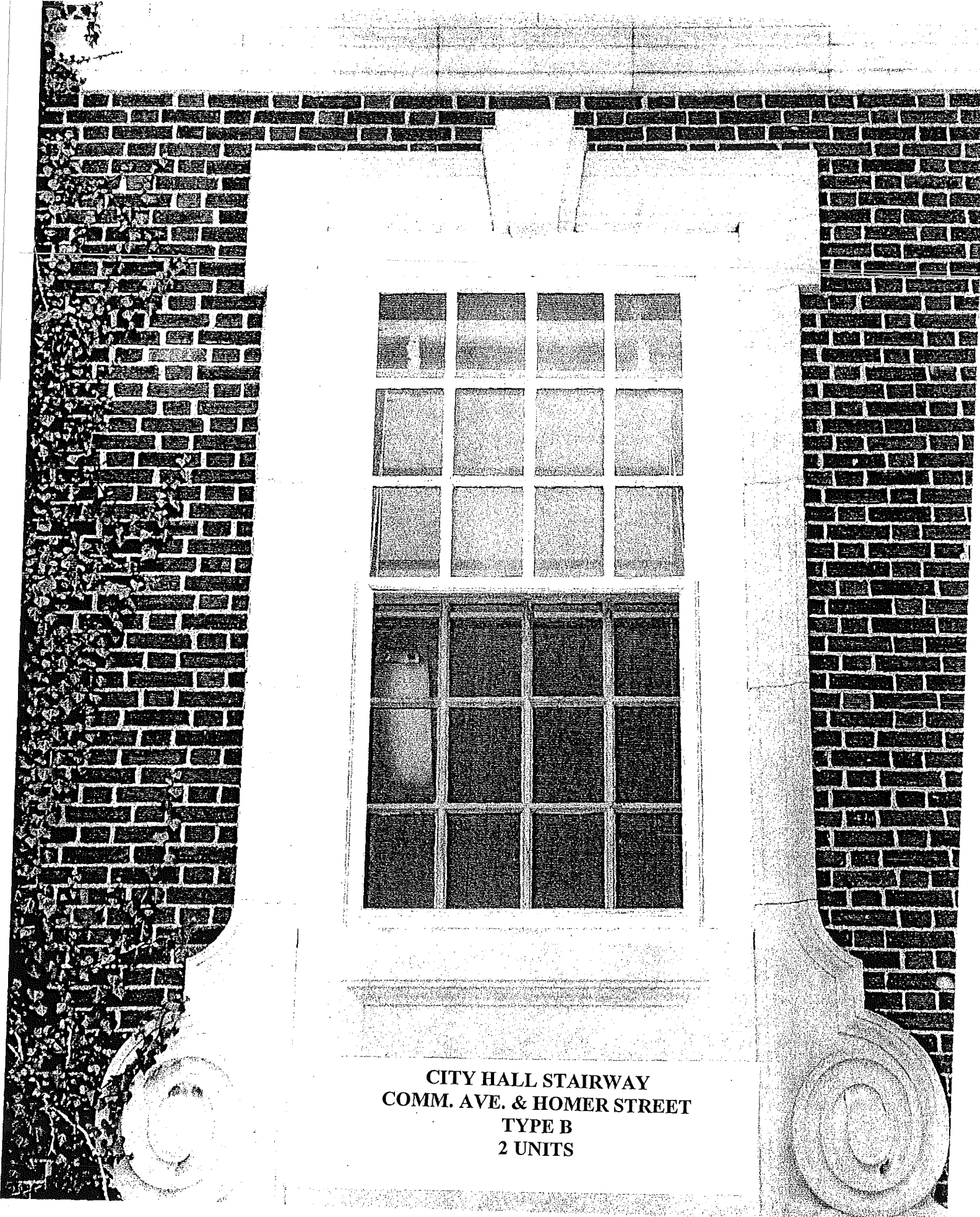
GROUND FLOOR
TYPE - D
8-UNITS

NOTE: WOOD ROT
NEEDS NEW CASING

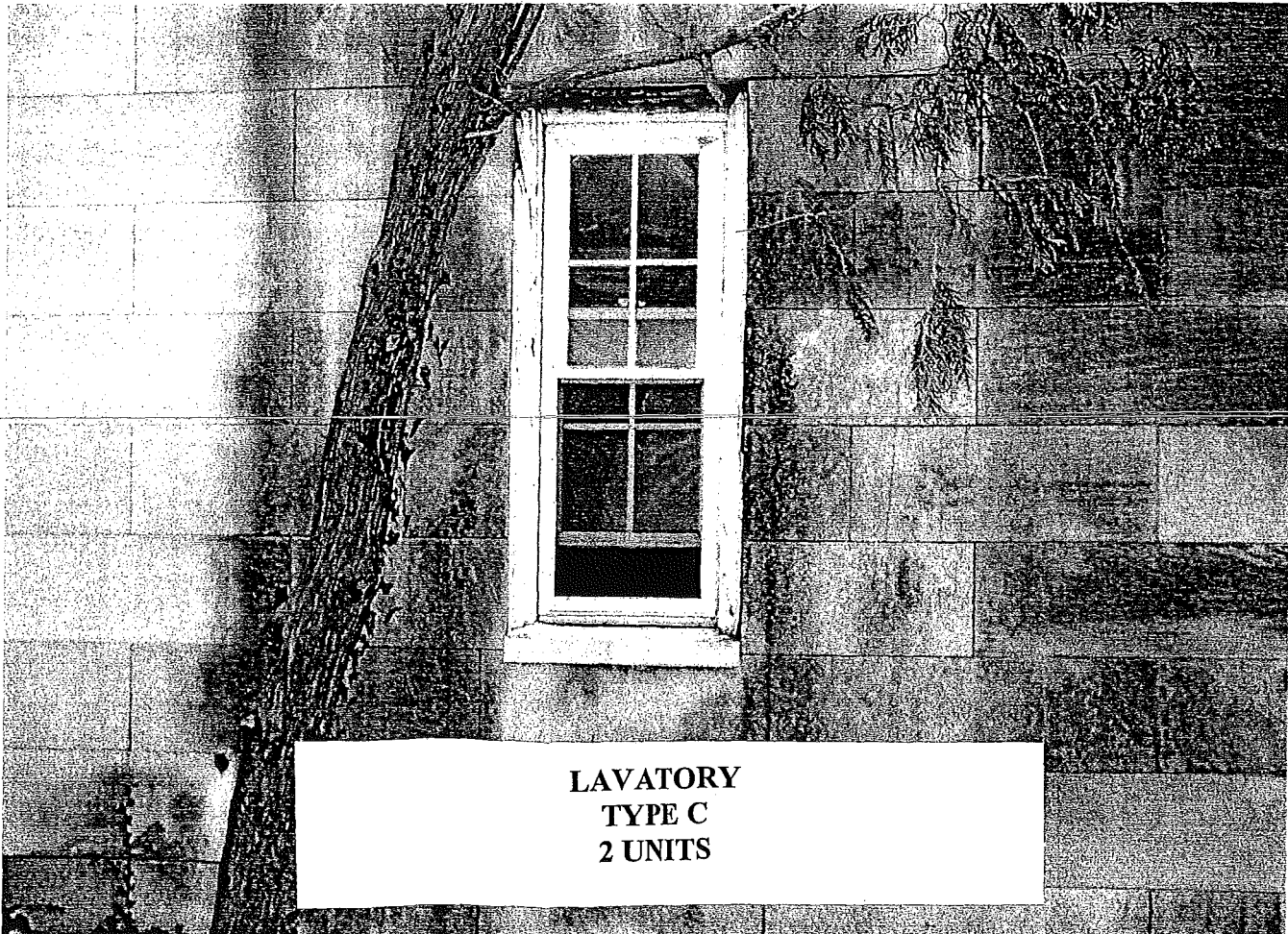
Proj. #	Date	By	Scale	WINDOWS		Drawing #	Rev
02-008	Jan 6 2003	ECD	None	CITY HALL 1000 COMMONWEALTH AVENUE		OB-590	0



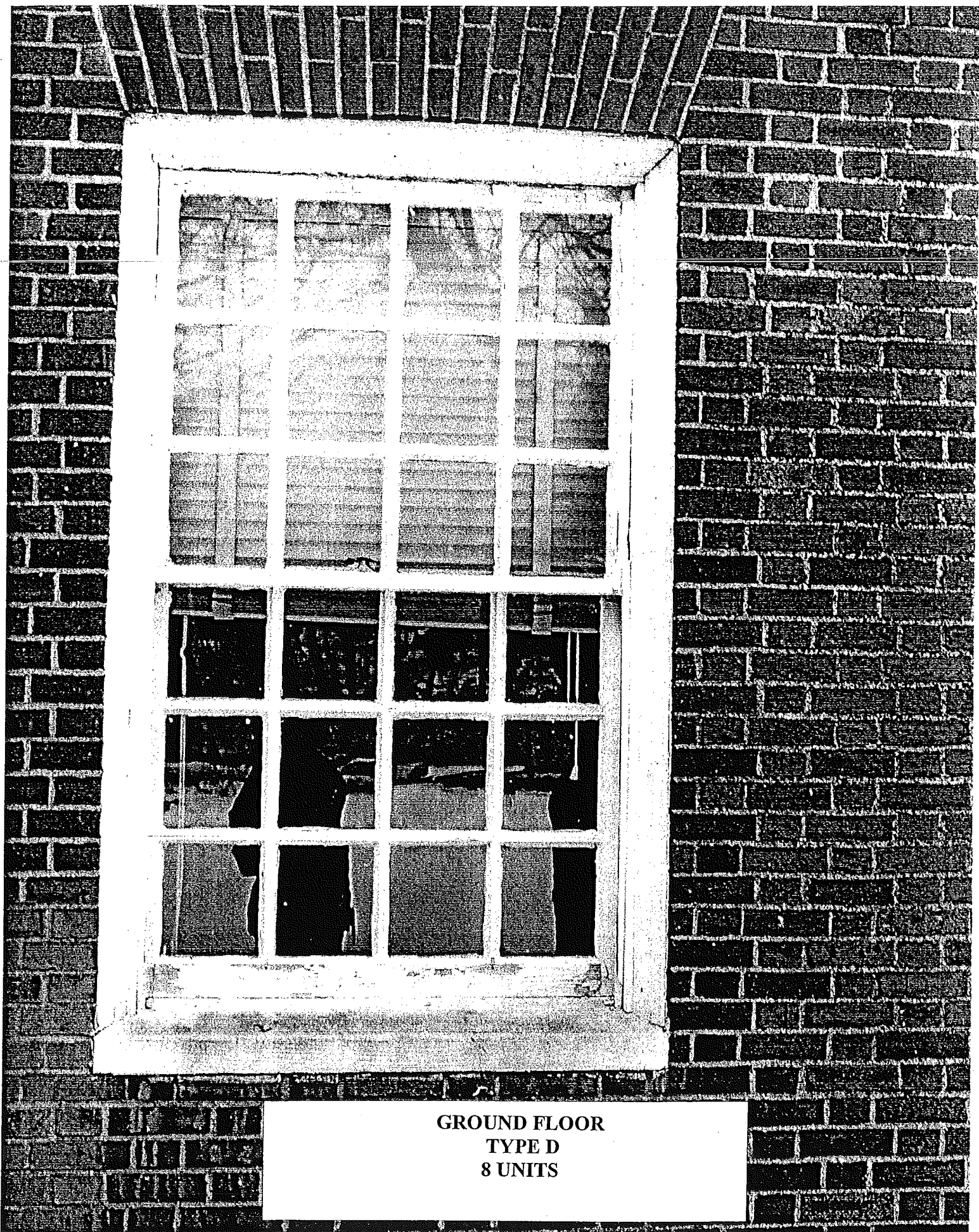
ALDERMANIC CHAM./WAR MEMORIAL
TYPE A
21 UNITS



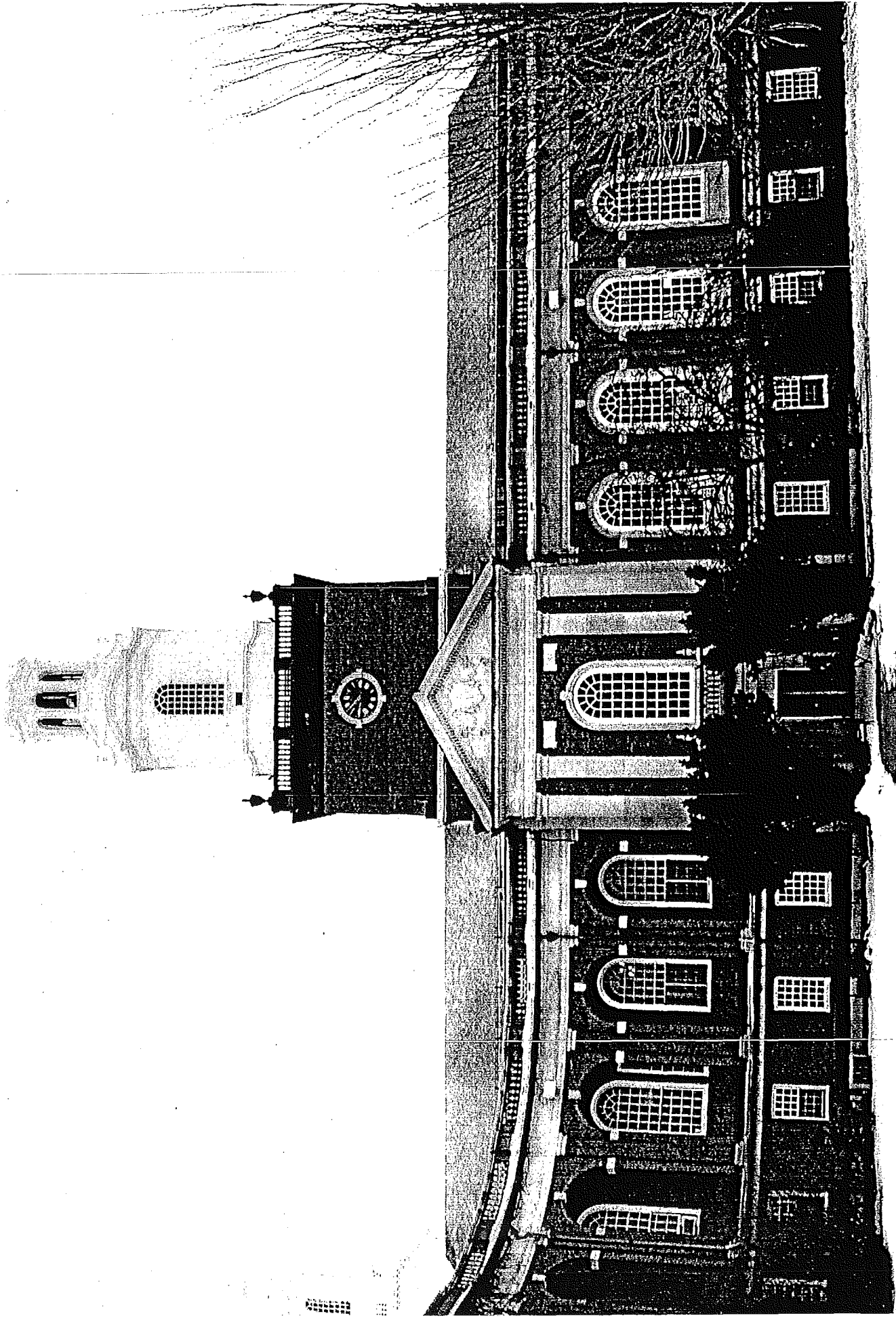
CITY HALL STAIRWAY
COMM. AVE. & HOMER STREET
TYPE B
2 UNITS



**LAVATORY
TYPE C
2 UNITS**



**GROUND FLOOR
TYPE D
8 UNITS**



ALDERMANIC CHAM, WAR MEMORIAL
COMM. AVE.
ELEVATION



**City Hall & War Memorial
Commonwealth Ave. Elevation**