

Prepared By:

Pressley
Associates, Inc.
Landscape Architects

Bartlett Tree
Experts

Prepared For:



Newton City Hall and War Memorial Building Grounds

Newton, Massachusetts

SEAL:



DRAWING TITLE:

RECOMMENDED TREATMENT PLAN

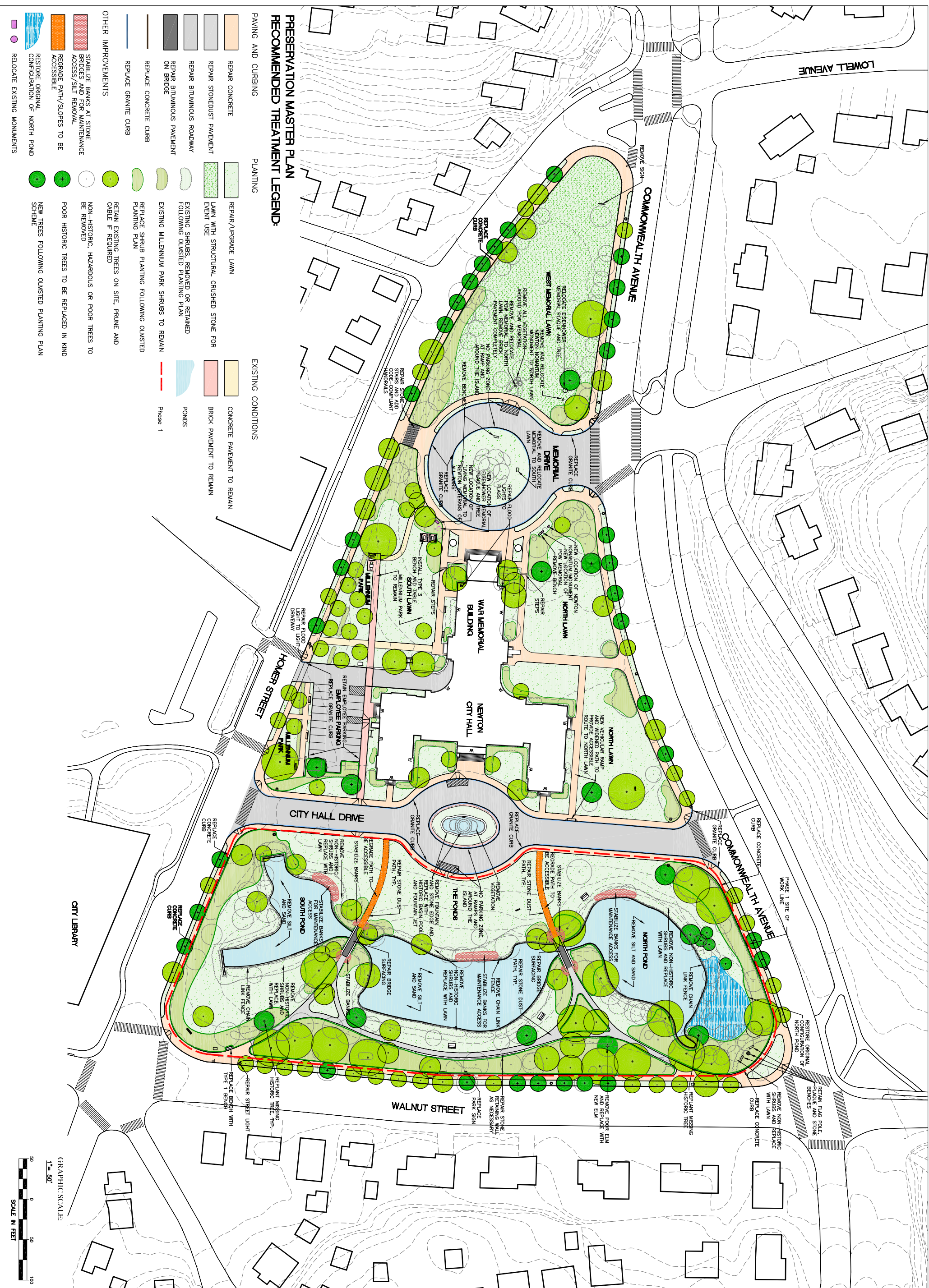
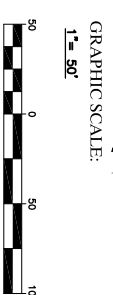
DRAWN BY: TT

DRAWING NO.

CHECKED BY: LM, JS, MP

DATE: JUNE 15, 2006

PROJECT: PA#05070.00



PRESERVATION MASTER PLAN RECOMMENDED TREATMENT LEGEND:

- PAVING AND CURBING**
 - REPAIR CONCRETE
 - REPAIR STONEDUST PAVEMENT
 - REPAIR BITUMINOUS ROADWAY
 - REPAIR BITUMINOUS PAVEMENT ON BRIDGE
 - REPLACE CONCRETE CURB
 - REPLACE GRANITE CURB
- PLANTING**
 - REPAIR/UPGRADE LAWN
 - LAWN WITH STRUCTURAL CRUSHED STONE FOR EVENT USE
 - EXISTING SHRUBS, REMOVED OR RETAINED FOLLOWING OLKSTED PLANTING PLAN
 - EXISTING MILLENNIUM PARK SHRUBS TO REMAIN
 - REPLACE SHRUB PLANTING FOLLOWING OLKSTED PLANTING PLAN
 - RETAIN EXISTING TREES ON SITE, PRUNE AND CABLE IF REQUIRED
 - NON-HISTORIC, HAZARDOUS OR POOR TREES TO BE REMOVED
 - POOR HISTORIC TREES TO BE REPLACED IN KIND
 - NEW TREES FOLLOWING OLKSTED PLANTING PLAN
- EXISTING CONDITIONS**
 - CONCRETE PAVEMENT TO REMAIN
 - BRICK PAVEMENT TO REMAIN
 - PONDS
 - Phase 1
- OTHER IMPROVEMENTS**
 - STABILIZE BANKS AT STONE BRIDGES AND FOR MAINTENANCE ACCESS/SILT REMOVAL
 - REGRADE PATH/SLOPES TO BE ACCESSIBLE
 - RESTORE ORIGINAL CONFIGURATION OF NORTH POND
 - RELOCATE EXISTING MONUMENTS

DRAWING NO. **L-7**

DATE: JUNE 15, 2006

PROJECT: PA#05070.00