

Angier Elementary School



Public Facilities Committee

September 18, 2013



W.T. RICH COMPANY, INC.



Project Management

DiNisco Design

DiNisco Design www.dinisco.com

Approval Process

ANGIER ELEMENTARY SCHOOL - NEWTON, MA

9/18/2013

APPROVALS PROCESS

Sep. 11, 2013 BOA Public Facilities 5-58 Site Plan Approval Public Hearing

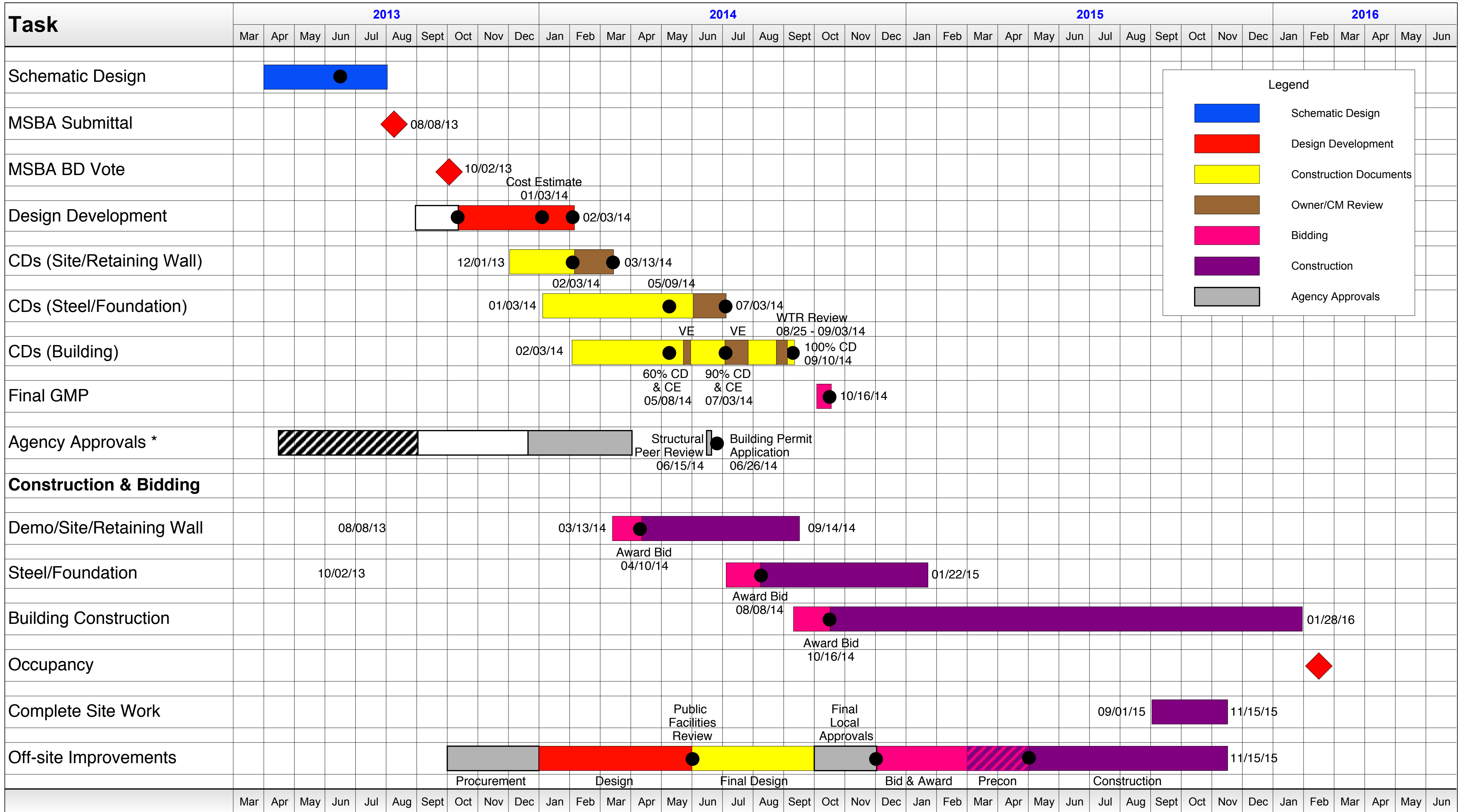
**Sep. 18, 2013 BOA Public Facilities 5-58 Site Plan Approval Vote
Joint Meeting with Programs and Services**

Sep. 23, 2013 BOA Finance Committee Meeting

Oct. 2, 2013 MSBA Board Vote on Project Scope and Budget Agreement

Oct. 7, 2013 BOA 5-58 Approval and Full Project Funding Approval

Project Schedule



* Site Plan Review
 * Intersection Improvements
 * Church of the Good Shepherd
 * Utility Poles
 * MA/Newton Historic
 * Archaeological
 * MBTA
 * Fire Department
 * Energy Code/LEED

Schematic Design Total Project Budget Summary

Estimated Cost

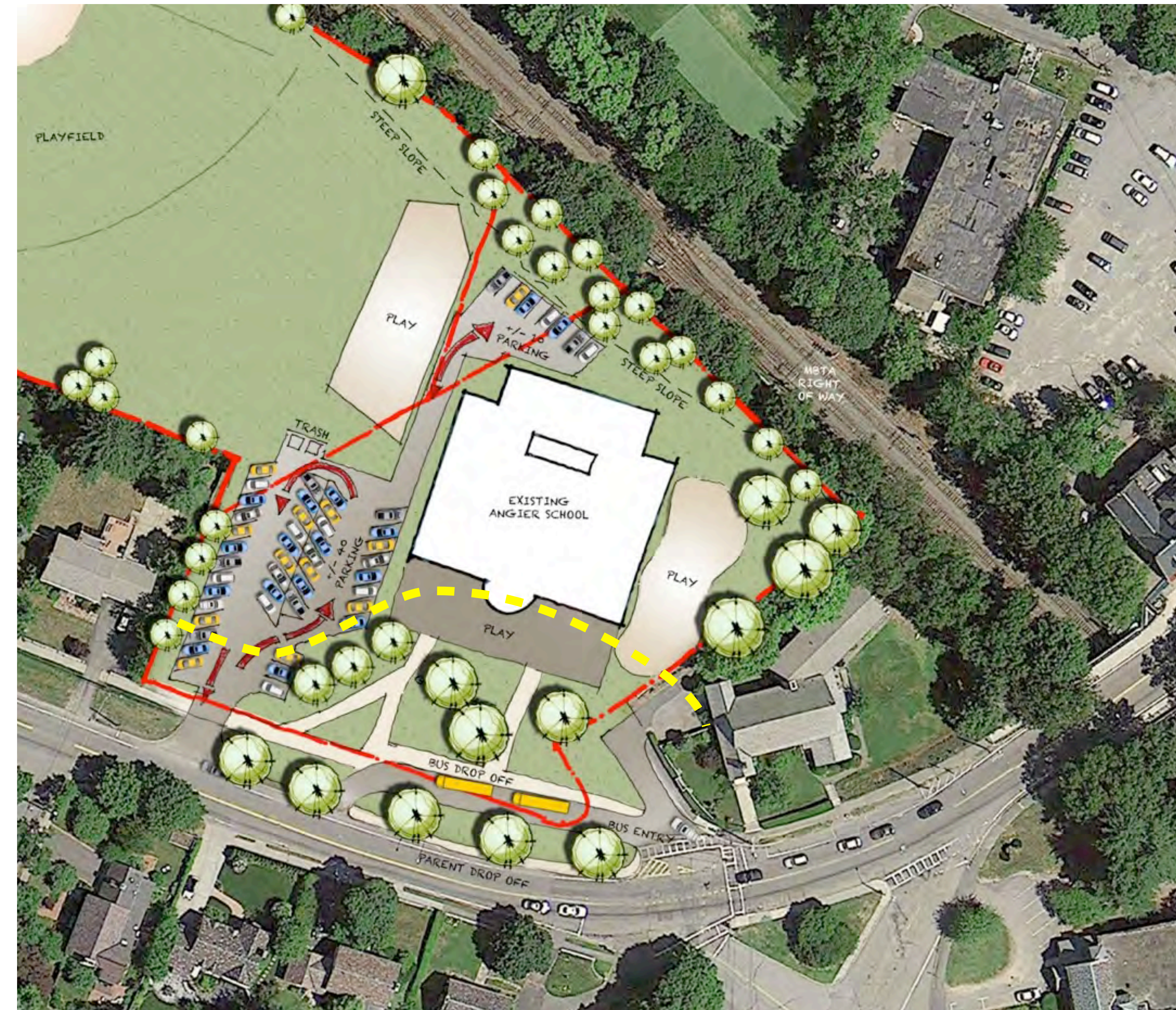
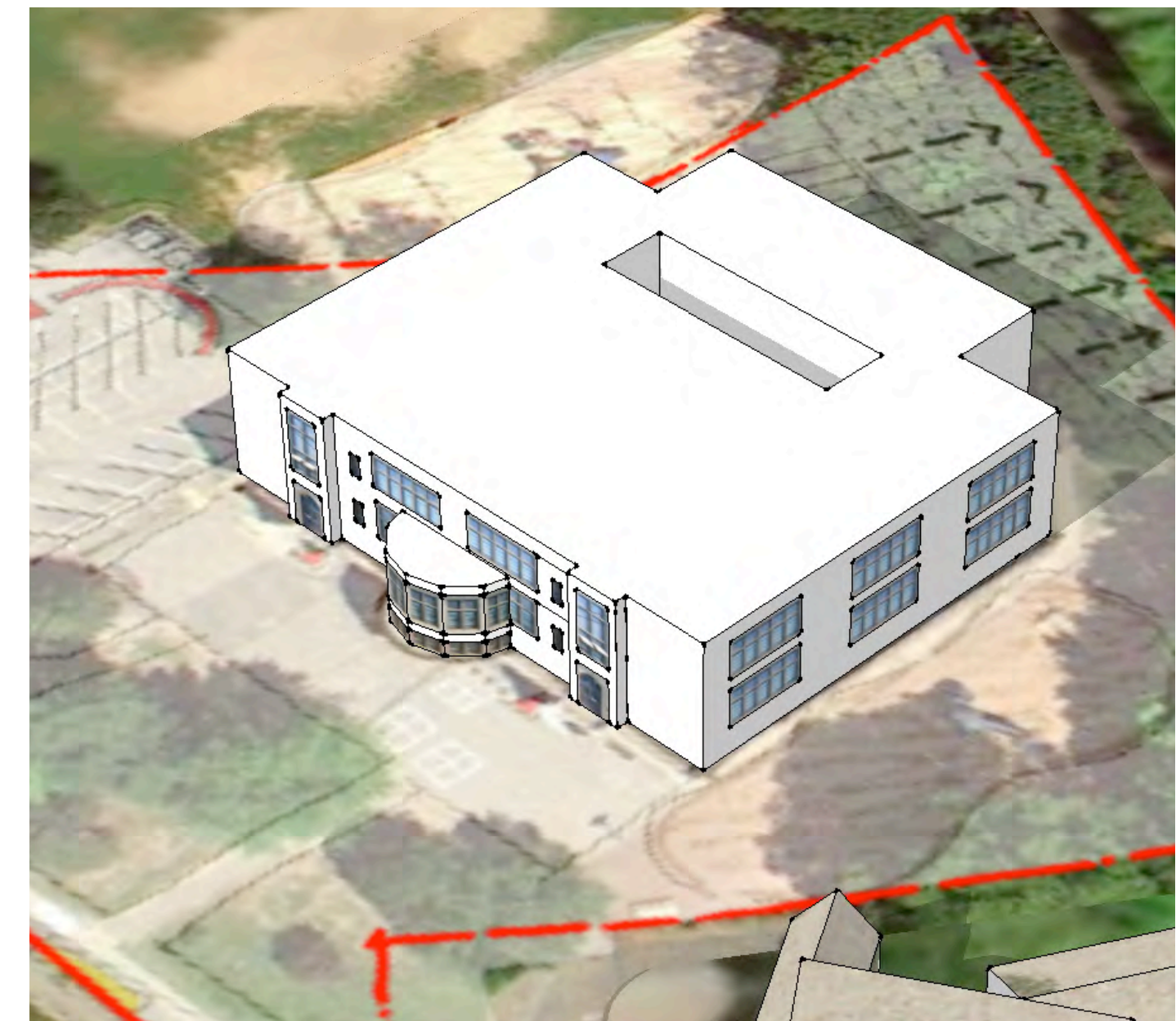
Feasibility Study (currently funded)	\$ 717,659
Administration (includes OPM fees for DD through Closeout)	\$ 970,000
Architecture and Engineering (DD through Closeout)	\$ 2,491,100
CM at Risk Pre-Construction Services (DD through Closeout)	\$ 123,600
Construction Costs	\$ 26,231,698
Off-Site Improvements (MSBA Excluded)	\$ 3,948,259
Miscellaneous Project Costs (Utility Fees, Testing, Moving)	\$ 230,000
Furnishings and Educational Technology	\$ 1,116,000
Potentially Eligible Construction Contingency	\$ 1,311,474
Potentially Eligible Owner's (soft cost) Contingency	\$ 360,210
Total Project Budget	\$ 37,500,000
Minimum Anticipated MSBA Grant	\$ 10,000,000
Maximum Local Share	\$ 27,500,000

Key Project Metrics	
Design Enrollment	465
Total Building SF	74,960
Construction Cost/SF	\$349.94

Site Analysis

Existing Site Utilization

- 2 acres - constrained
- Inefficient layout
- Steep slope at T tracks
- Congested traffic/drop-off
- Inadequate parking



Site Plan

Site Comments

- Relocate basketball 1/2 court area.
- Improve sight lines to Playground.
- Provide access controls to emergency lane.
- Provide sidewalk access to playground.

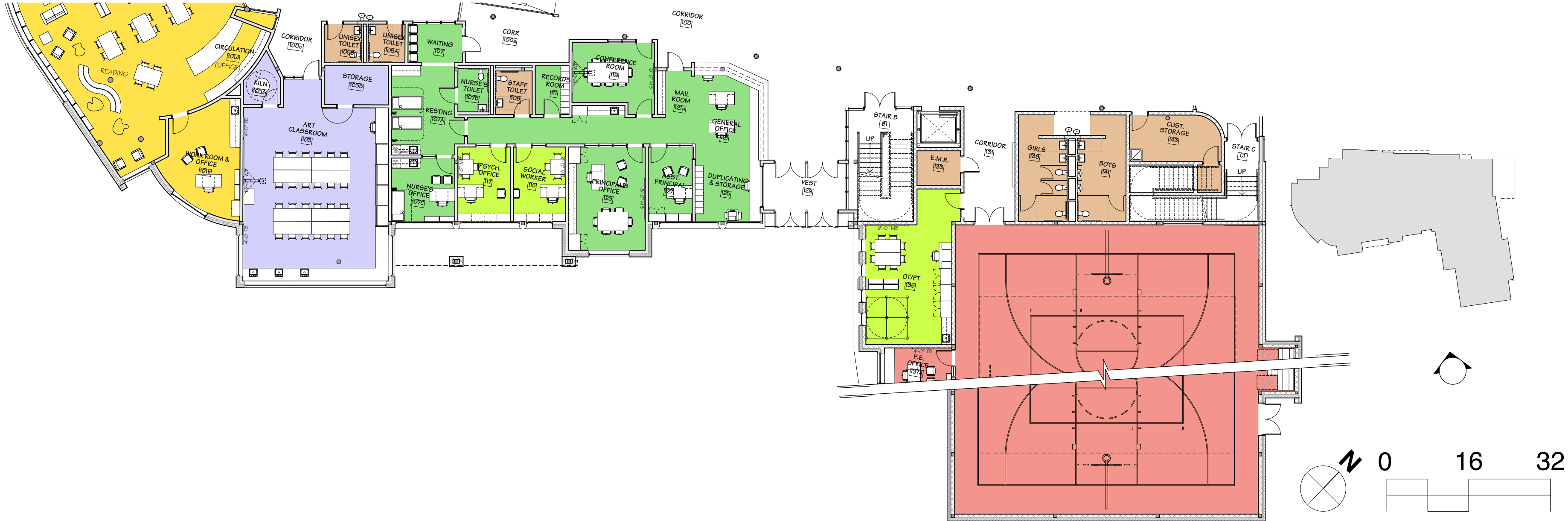
Plan Comments

- Provide ability to secure stairwells.
- Increase transparency of central stair.
- Simplify ramps.
- Distribute toilets.
- The building will be fully air conditioned, including Gym.



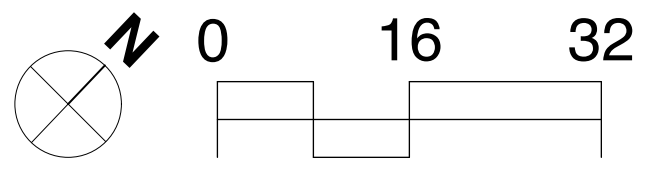
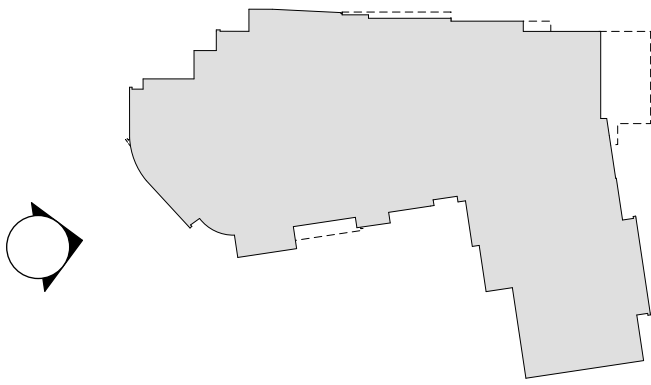
Exterior Elevations

East Elevation



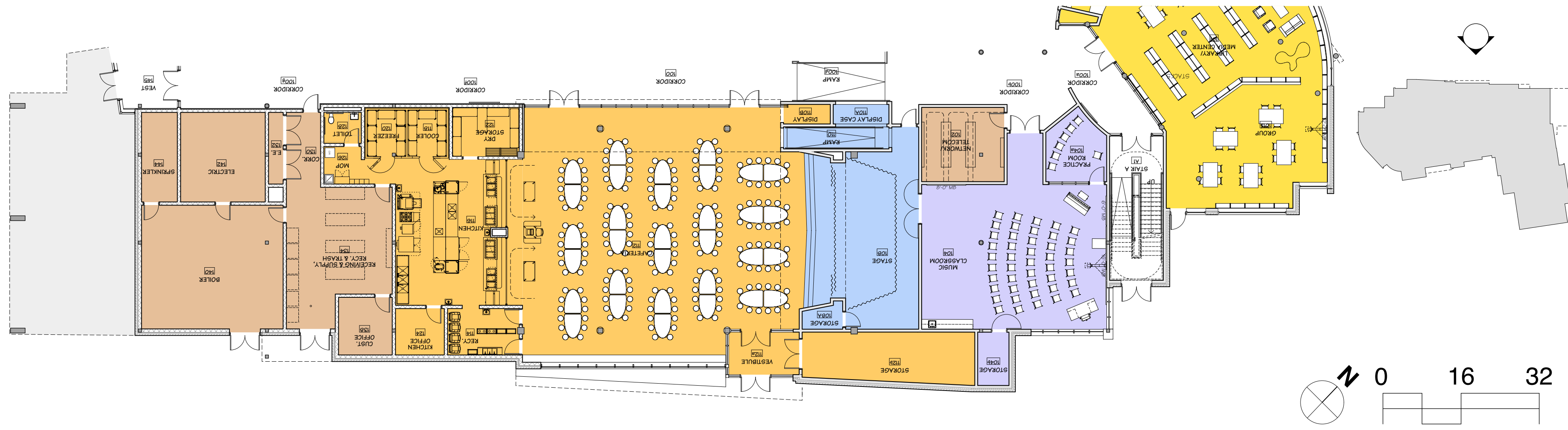
Exterior Elevations

South Elevation



Exterior Elevations

West Elevation



Construction Management Plan

Safety, mitigation and logistics

OUR GOAL:

- **Assure the health and safety** of the community and workforce while **minimizing disruption** to the community and enabling **cost-effective** progression of the work

KEY STRATEGIES:

- Frequent, consistent, two-way **Communication**
- Safety plan
- Construction Mitigation
- Address Construction Activities
- Community Outreach
- Community Liaison Group
- Waban Neighborhood Area Council (May 2014)

Construction Logistics

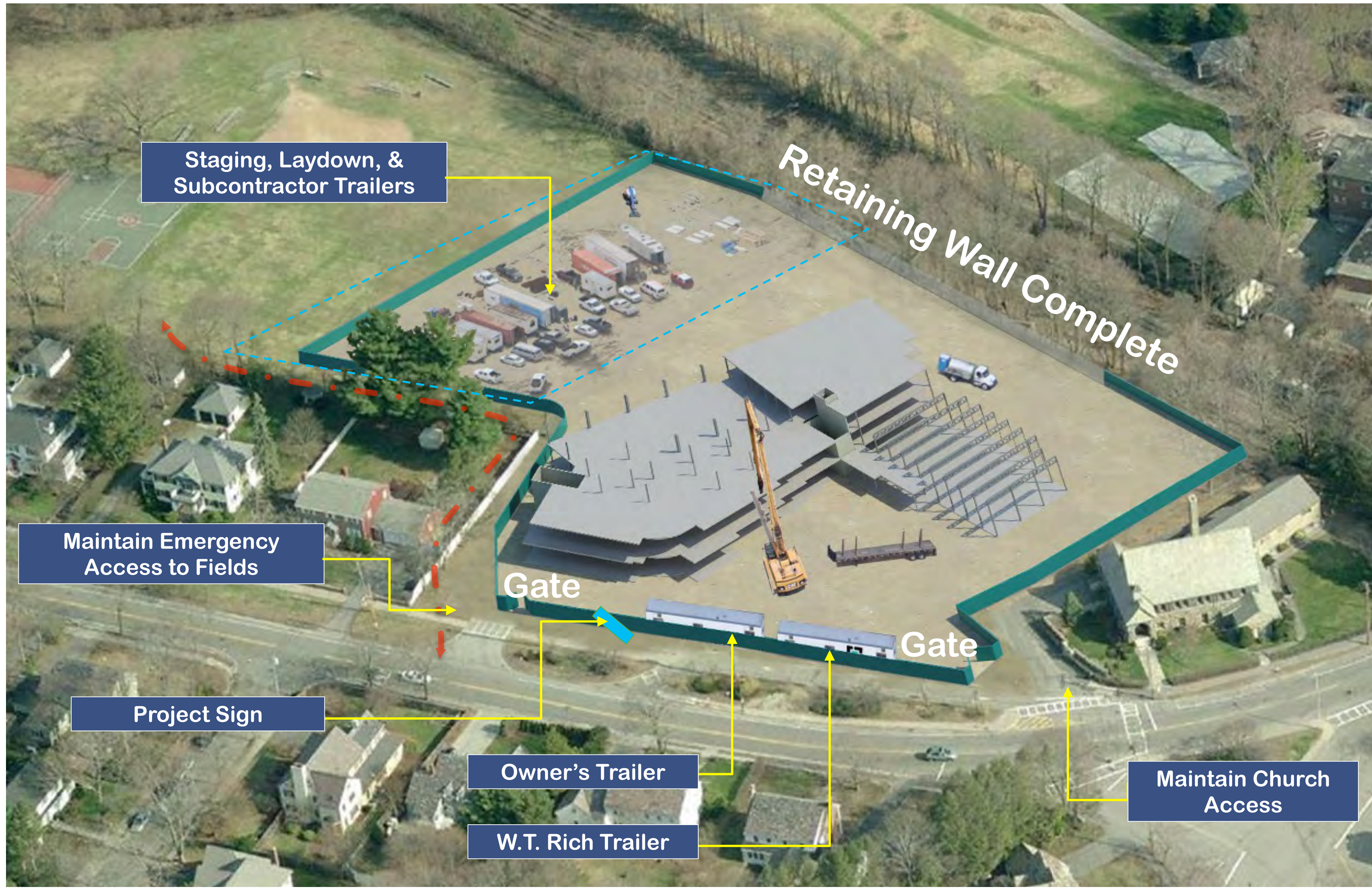
- Mandatory safety orientations
- Barricades & work area isolation
- Signage
- Project sign with contact information
- 24 x 7 emergency access hotline
- Dust control and air quality
- Noise control
- Egress and access to playfields and church
- Off-shift work procedures
- No smoking
- Parking
- Construction traffic
- And more...



Construction Phasing



Construction Phasing



Construction Phasing

Project Completion
January 2016



Angier Elementary School



Public Comments

