

# Public Forum Cabot School

March 11, 2015



## Cabot School

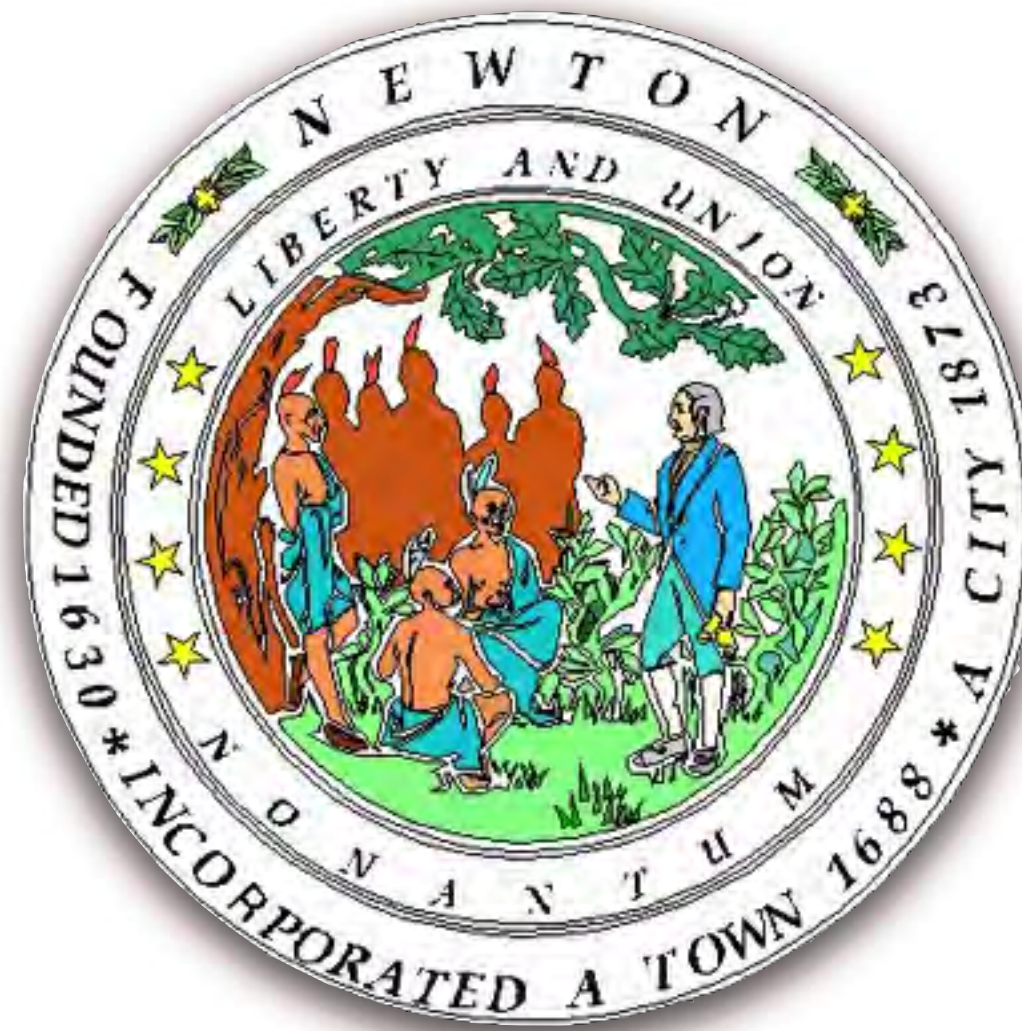
J O S L I N  
L E S S E R

Massachusetts School Building Authority

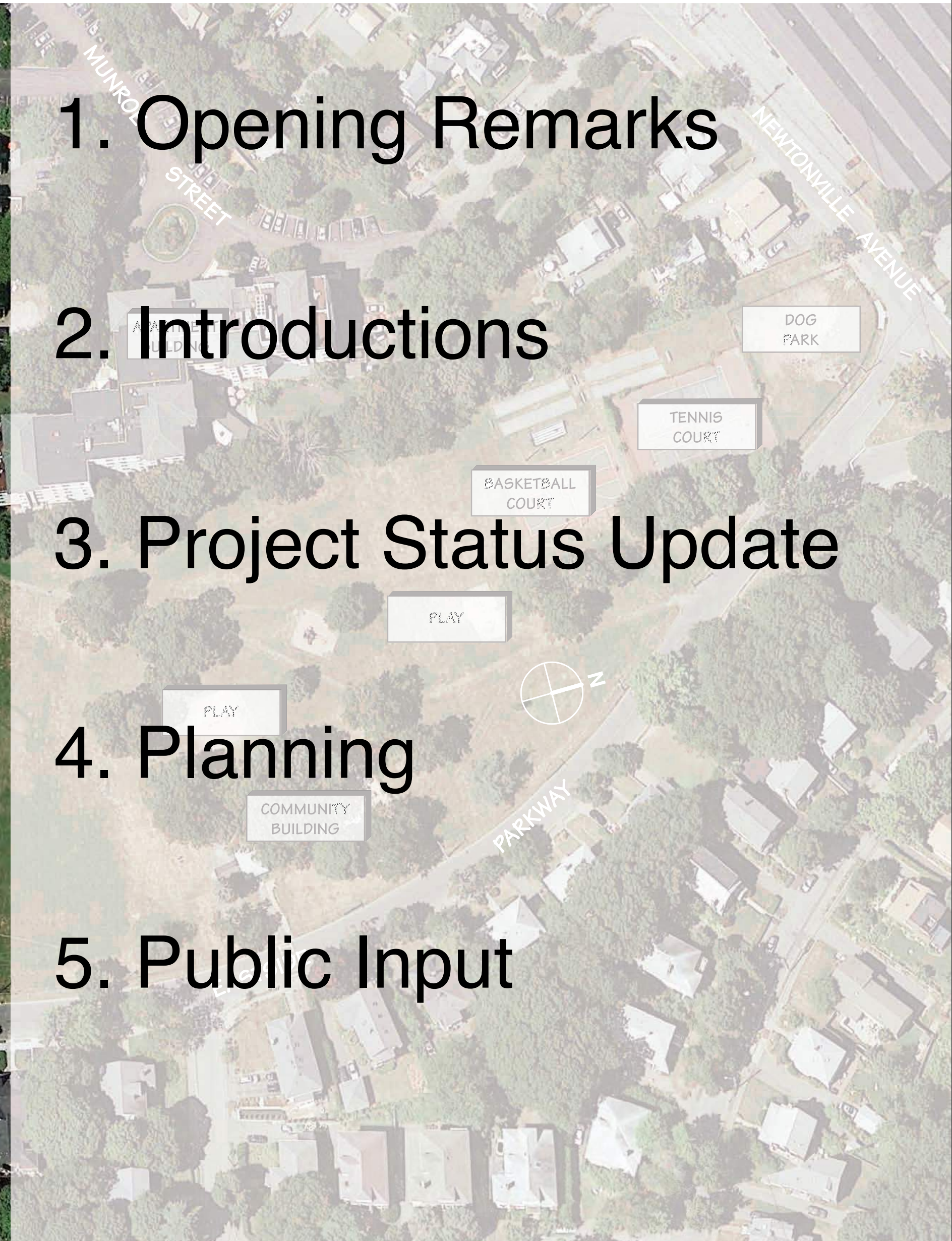
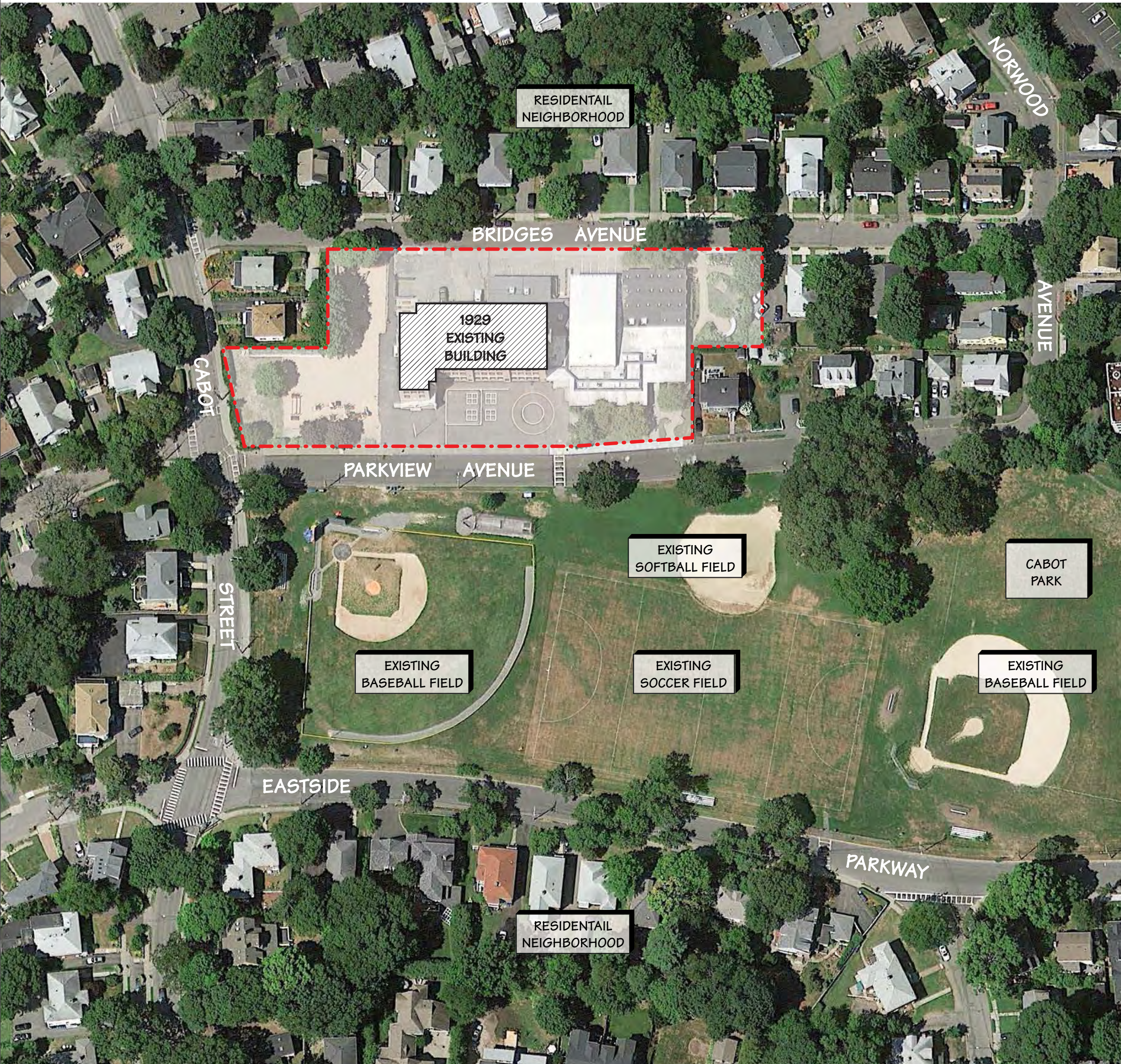
DiNisco Design  
PARTNERSHIP

# Opening Remarks

- Susan Albright, Alderman at Large, Ward 2
- Diana Fisher Gomberg, School Committee
- Mary Lou DiBella, Cabot School Principal
- Sandy Guryan, Deputy Superintendent at Newton Public Schools
- Alex Valcarce, Newton Building Department



# Agenda



# Collaborative Process



- Newton Public Schools
- Massachusetts School Building Authority
- Board of Aldermen
- School Committee
- Cabot School Building Committee
- Design Review Committee
- Parks and Recreation
- Newton Historic Commission
- User Groups and City Departments
- Public Input

[www.newtonma.gov/gov/building/capital\\_projects/cabot\\_school](http://www.newtonma.gov/gov/building/capital_projects/cabot_school)

# Project Schedule



**March 21, 2013** The City of Newton submitted a Statement of Interest to the MSBA

**March 26, 2014** MSBA invitation issued to the City of Newton to conduct Feasibility Study

**July 8, 2014** Joslin, Lesser + Associates selected as Owner's Project Manager (by City of Newton)

**September 23, 2014** DiNisco Design selected as Architect (by the MSBA Designer Selection Panel including local DSP representatives)

**February 27, 2014** Submitted Program to MSBA

**June 11, 2015** Submission date for Feasibility Study to the MSBA

**July 2015** Anticipated selection of Construction Manager

**July 2017** Anticipated start of construction

**January 2019** Anticipated school opening

# Project Characteristics

- SC Approved Educational Program
- Location: Current Cabot School site
- Enrollment: 480 students (K-5)
- Proposed Building ~ 81,500 SF - 88,000 SF  
(New Construction vs. Renovation / Addition)
- Total Project Budget: \$45M

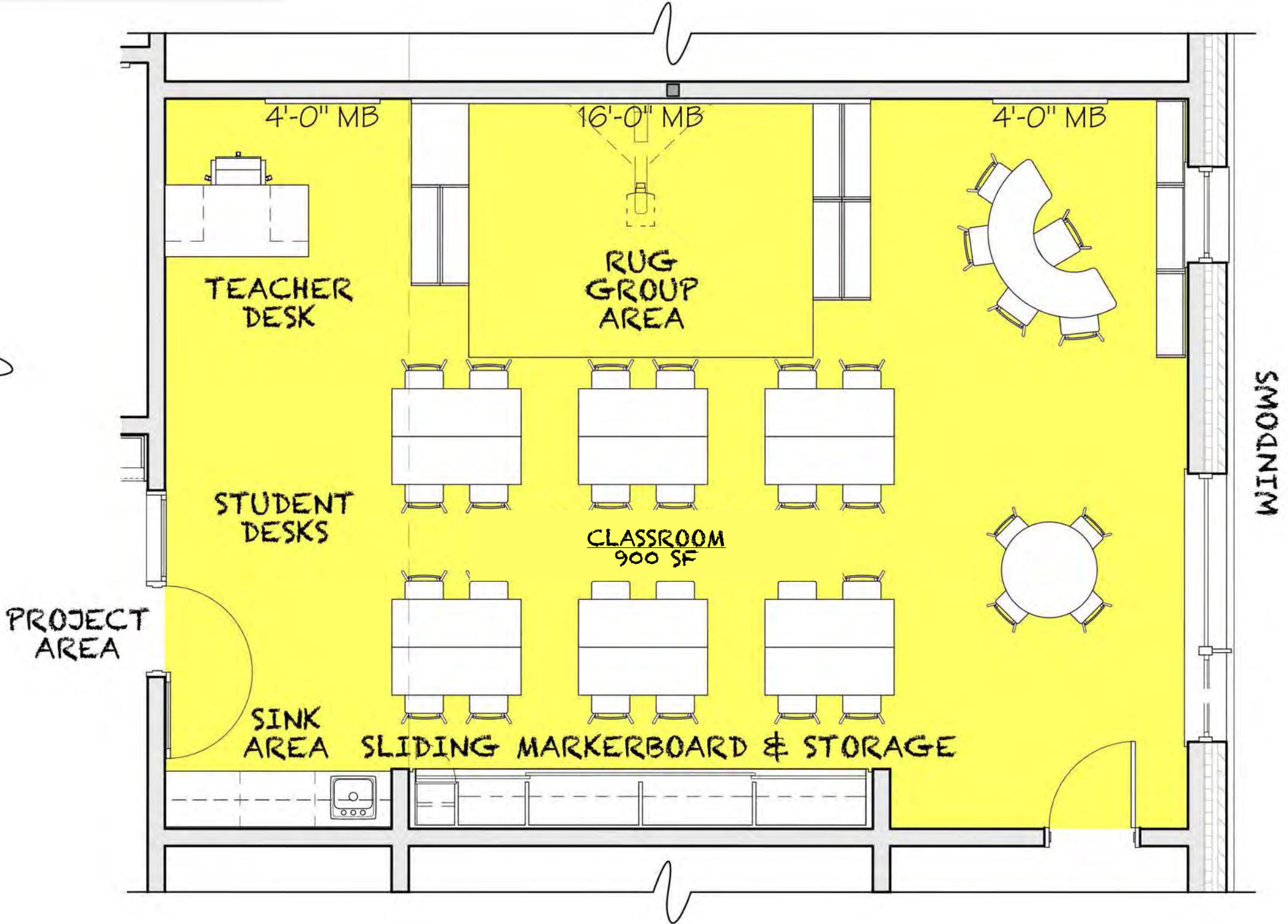
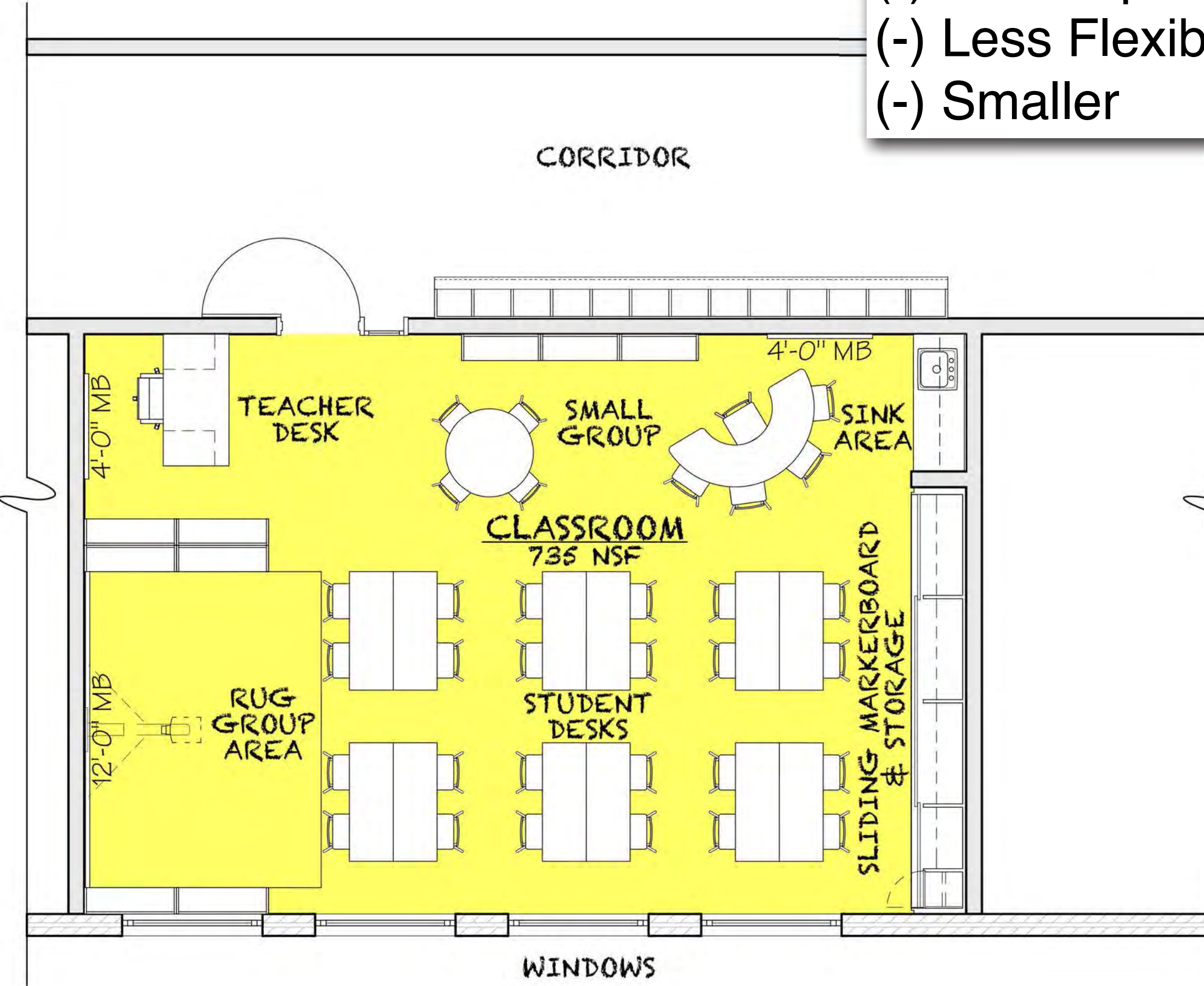
# Programming | Educational Considerations

- 24 Classrooms
- Special Education Program Spaces  
(2 Dedicated full size classrooms)
- Art Classroom
- Music Classroom
- 6,000 SF Gymnasium
- 3,000 SF Cafetorium w/ Stage
- 2,800 SF Library/Media Center
- Administration Support Spaces
- Custodial and Storage Spaces
- Outdoor Play/Teaching Areas

***“To educate, prepare, and inspire all students to achieve their full potential as lifelong learners, thinkers, and productive contributors to our global society.”***  
- Newton Public Schools Mission Statement

# Programming | Re-use of Cabot School

- Shortfalls**
- (-) Project Areas
  - (-) Less Square Footage
  - (-) Less Flexible
  - (-) Smaller



Existing Undersized Cabot Classroom

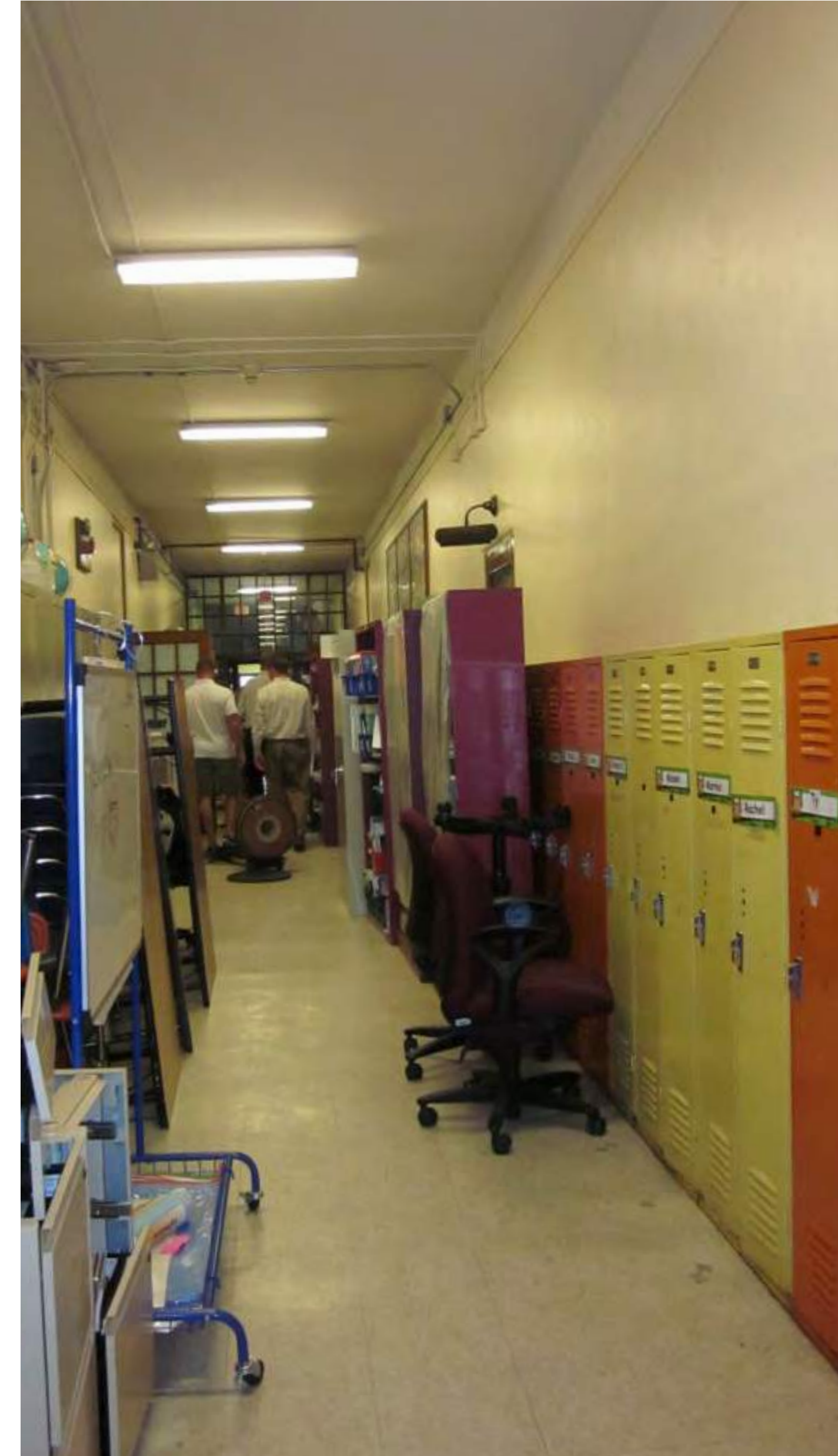
MSBA Required Classroom size



# Cabot School | Existing Building



# Cabot School | Existing Building



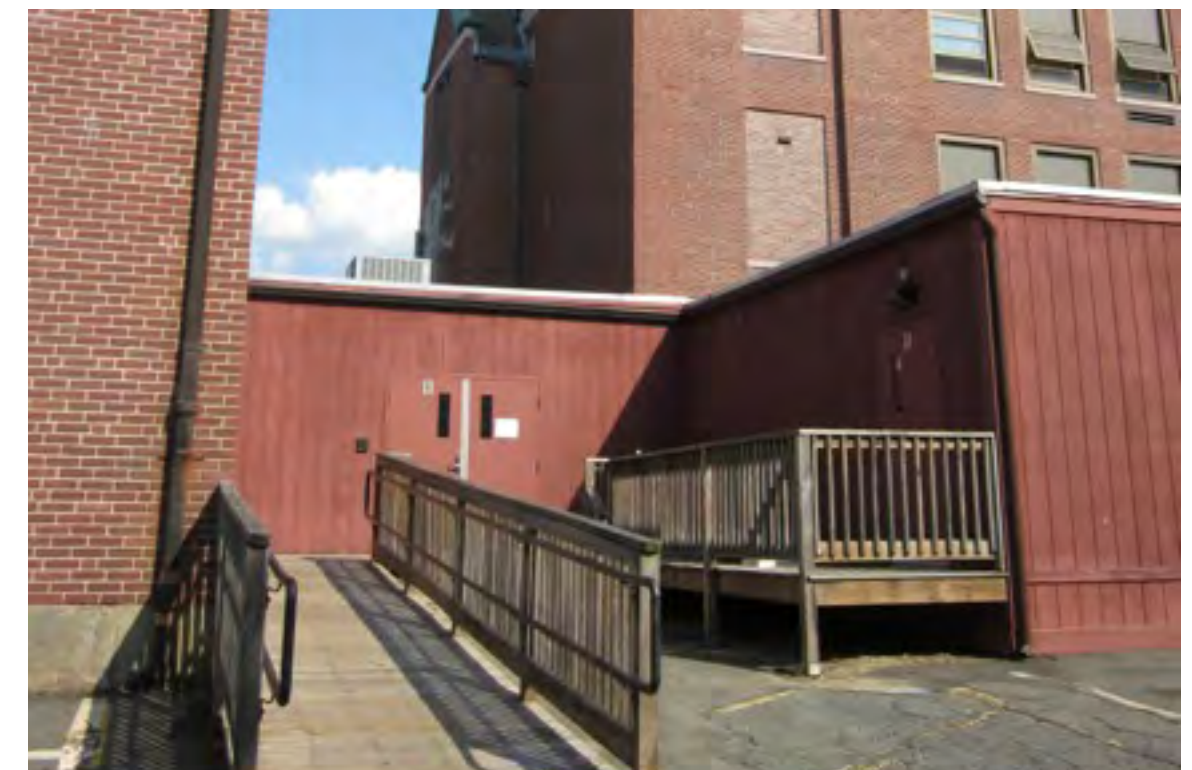
# Cabot School | Existing Building



# Cabot School | Existing Building



# Cabot School | Existing Building



# Cabot School | Existing Building



# Cabot School | Existing Building

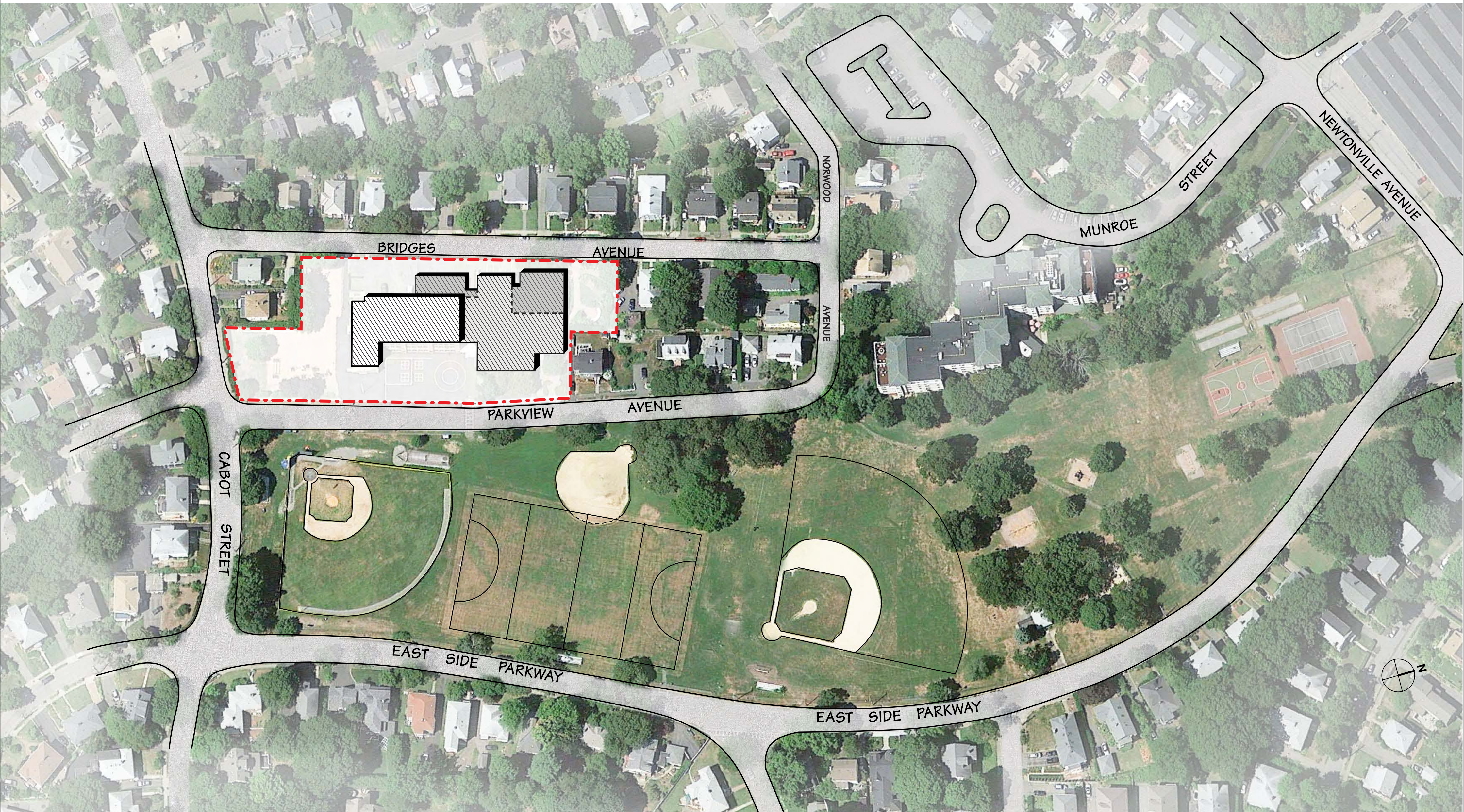


# Cabot School Site | Neighborhood Context

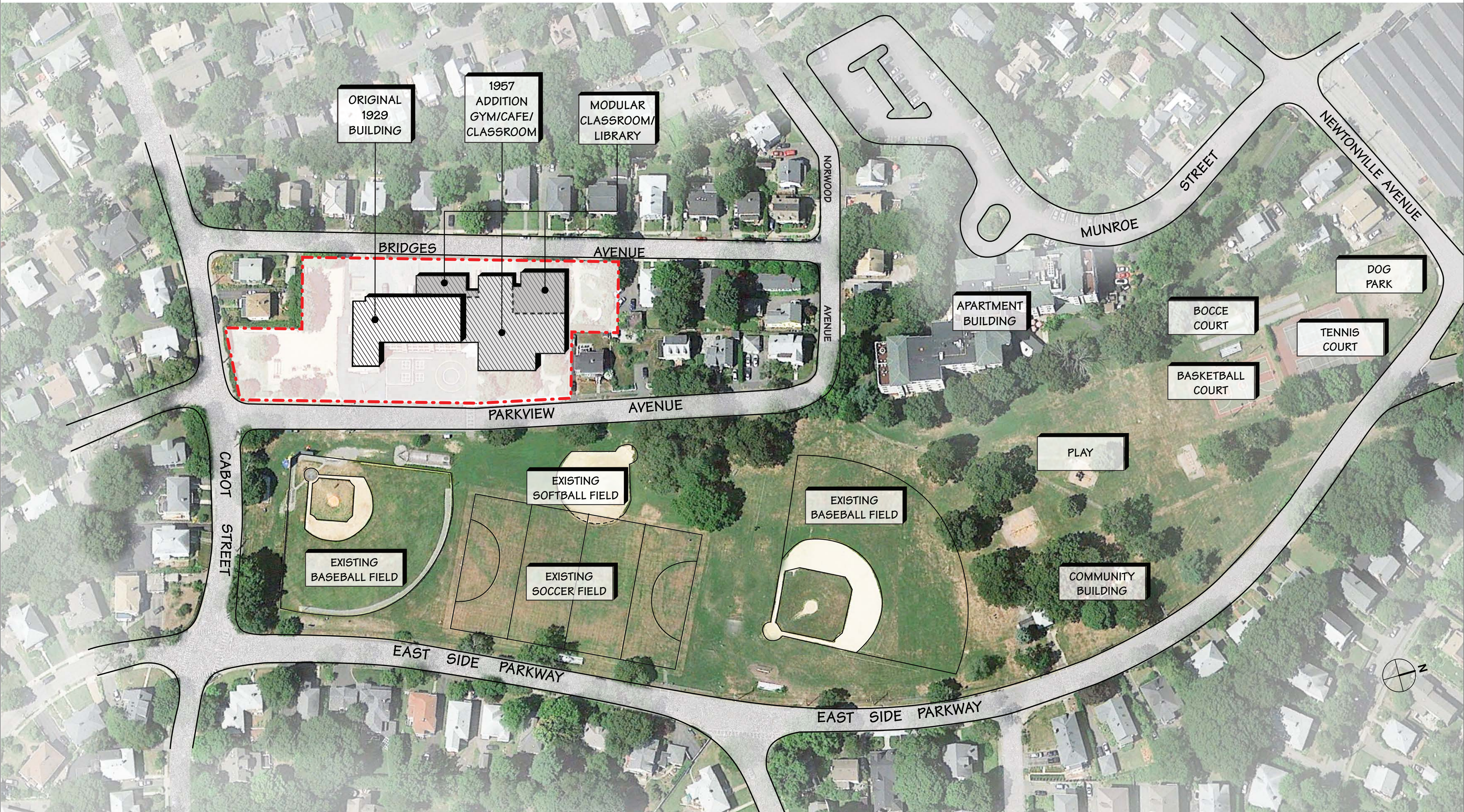




# Cabot School Site | Neighborhood Context



# Cabot School Site | Neighborhood Context



ORIGINAL  
1929  
BUILDING

1957  
ADDITION  
GYM/CAFE/  
CLASSROOM

MODULAR  
CLASSROOM/  
LIBRARY

BRIDGES

AVENUE

NORWOOD  
AVENUE

MUNROE  
STREET

NEWTONVILLE AVENUE

DOG  
PARK

APARTMENT  
BUILDING

BOCCE  
COURT

TENNIS  
COURT

BASKETBALL  
COURT

PARKVIEW

AVENUE

PLAY

EXISTING  
SOFTBALL FIELD

EXISTING  
BASEBALL FIELD

EXISTING  
BASEBALL FIELD

EXISTING  
SOCCER FIELD

COMMUNITY  
BUILDING

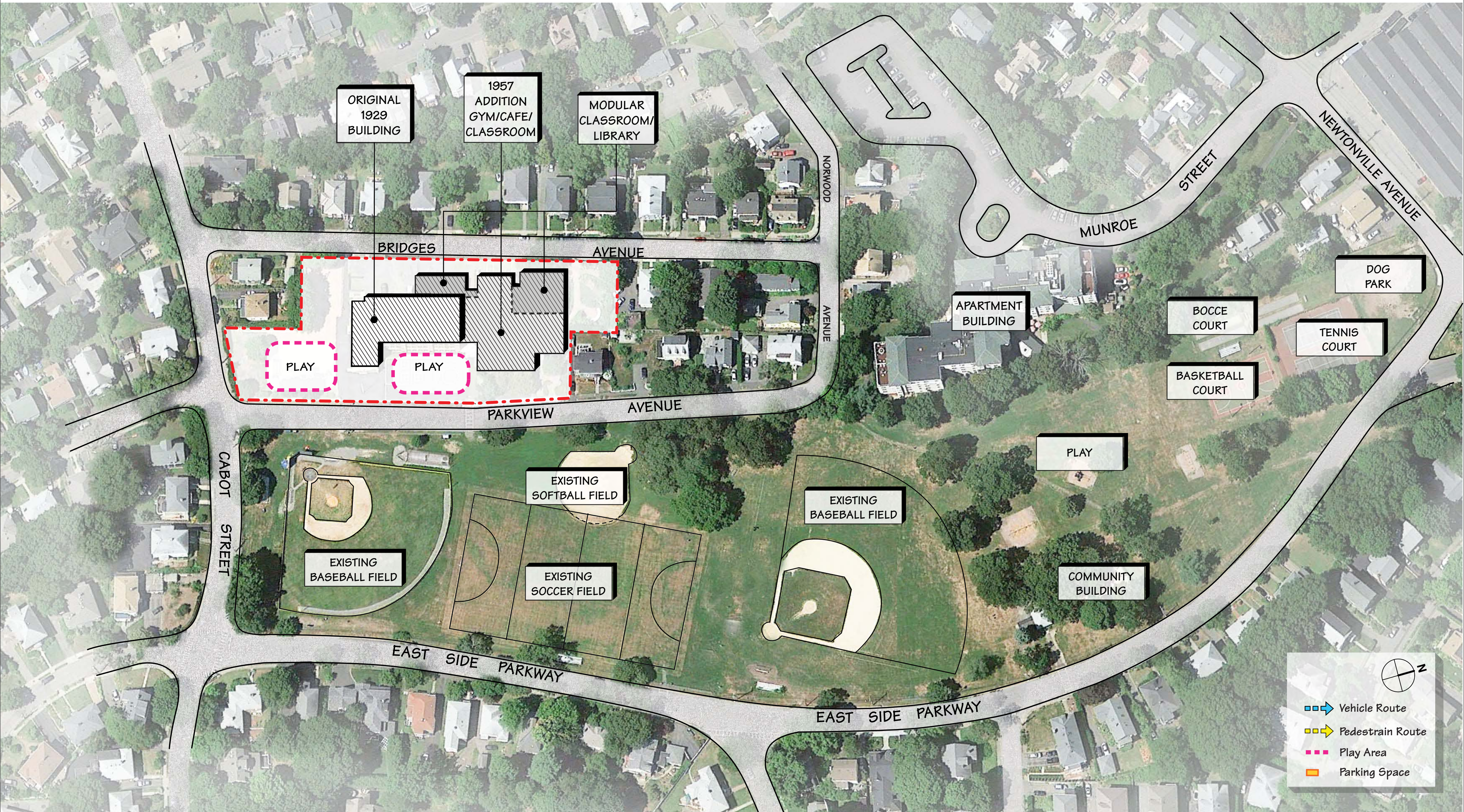
CABOT  
STREET

EAST SIDE  
PARKWAY

EAST SIDE  
PARKWAY



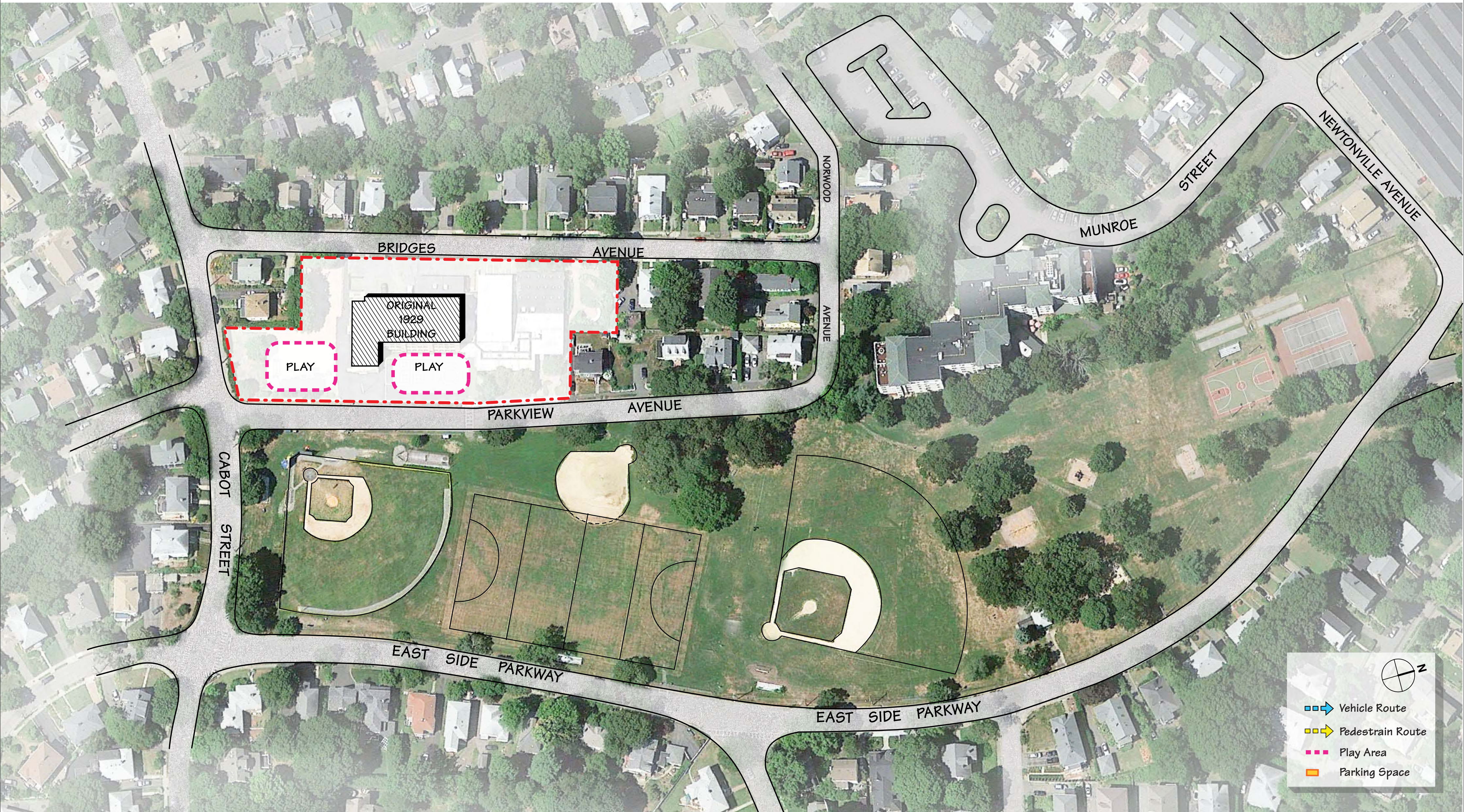
# Cabot School Site | Neighborhood Context



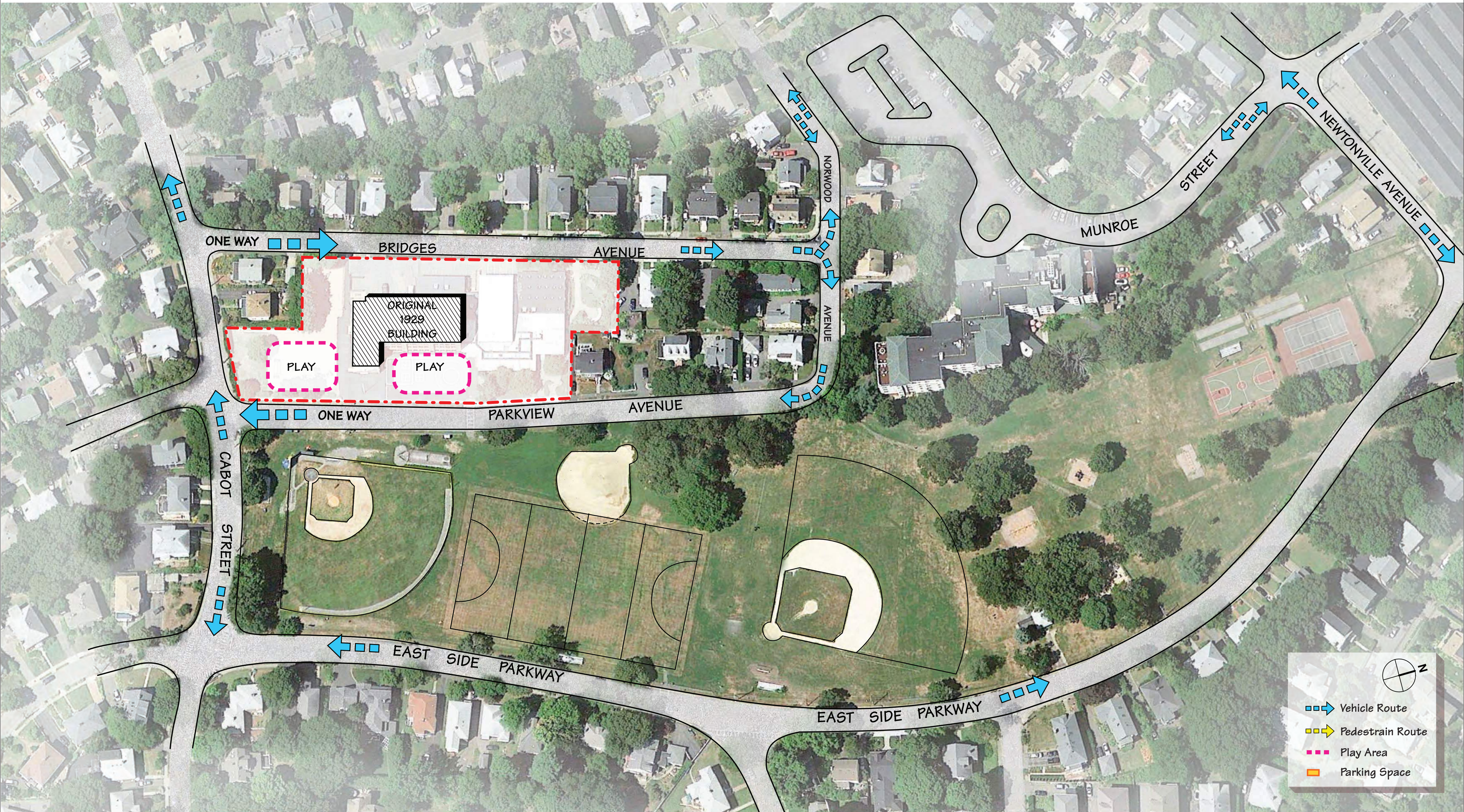
Legend:

- Vehicle Route (Blue dashed line with arrow)
- Pedestrian Route (Yellow dashed line with arrow)
- Play Area (Pink dashed line)
- Parking Space (Orange solid rectangle)

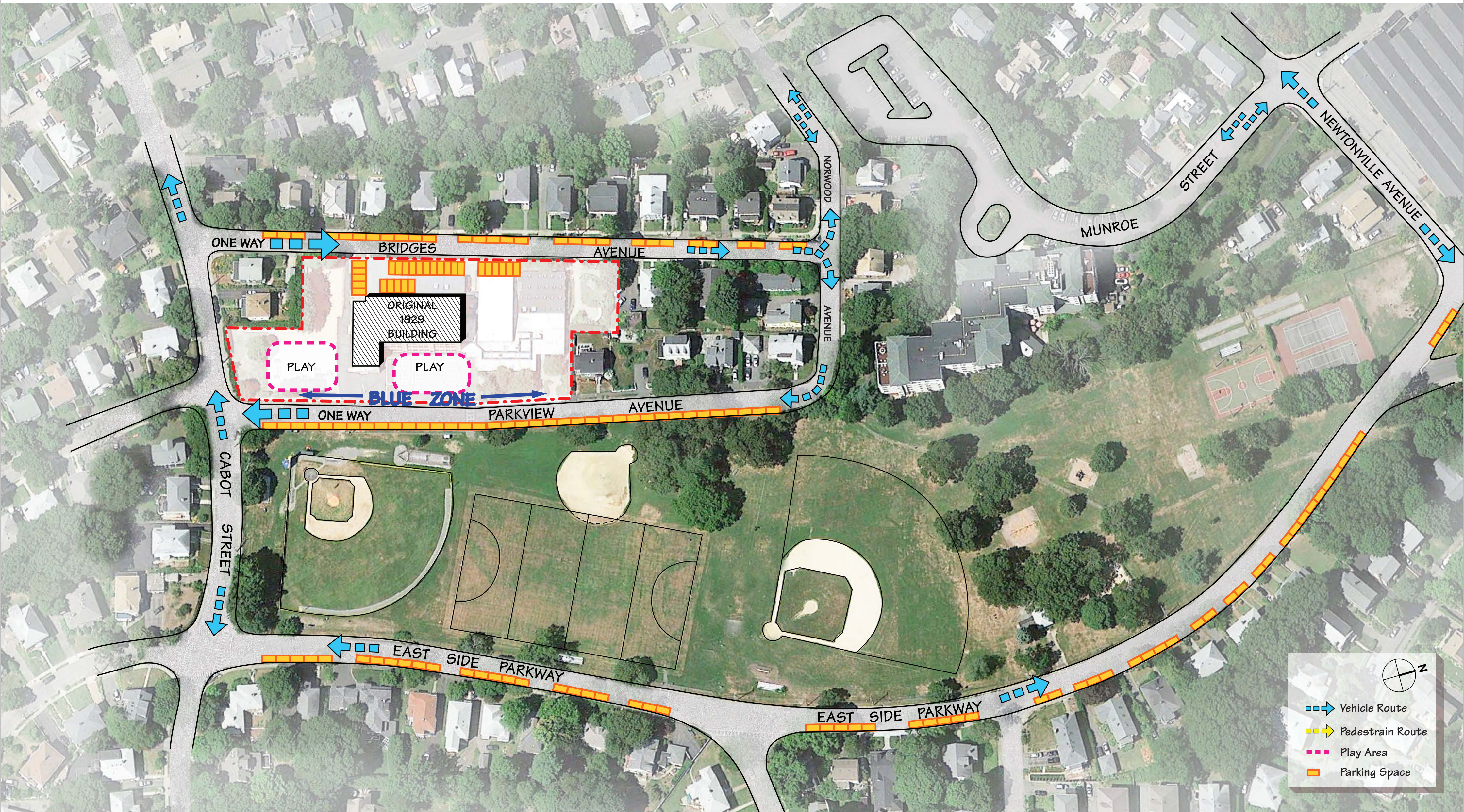
# Cabot School Site | Neighborhood Context



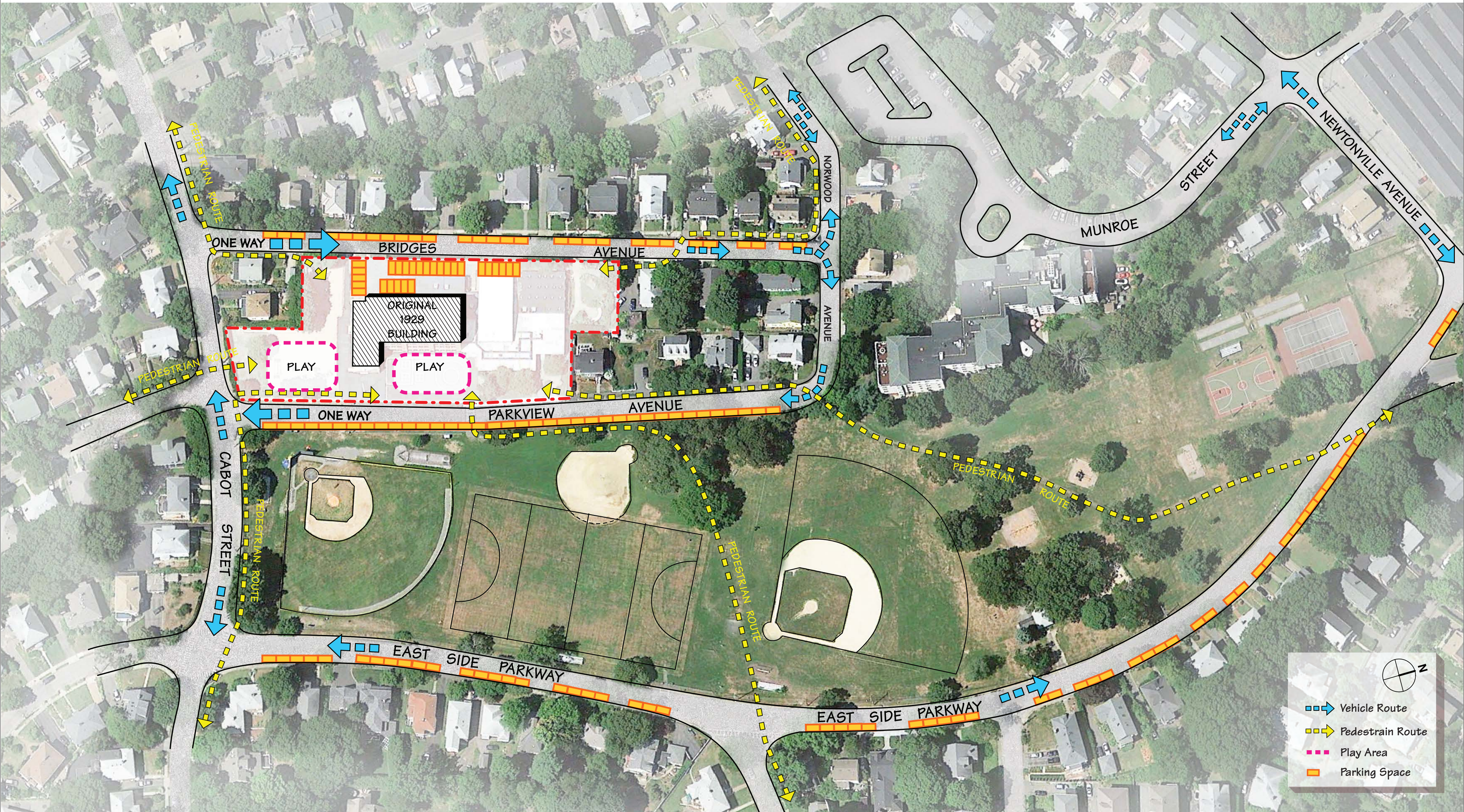
# Cabot School Site | Neighborhood Context



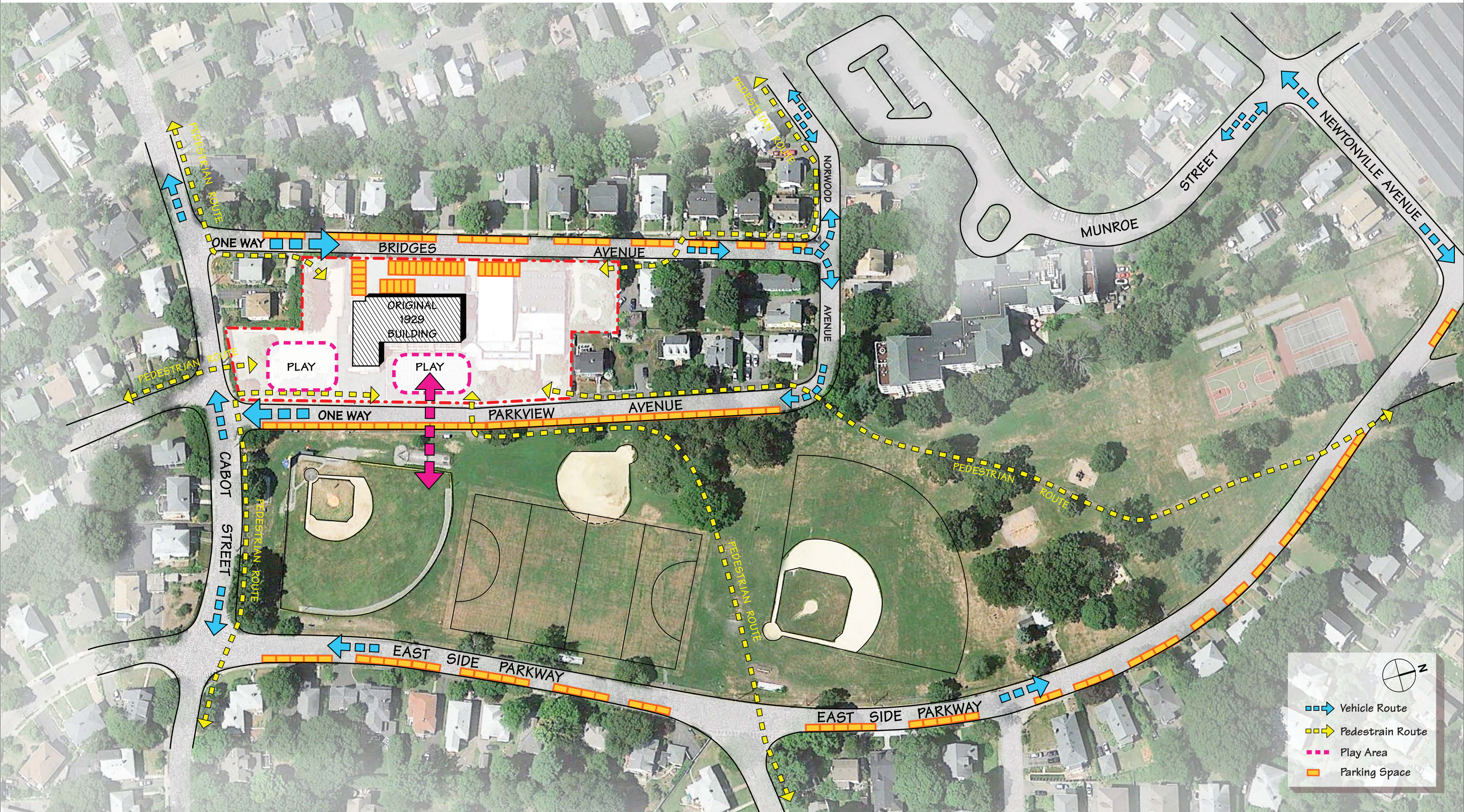
# Cabot School Site | Neighborhood Context



# Cabot School Site | Neighborhood Context



# Cabot School Site | Neighborhood Context

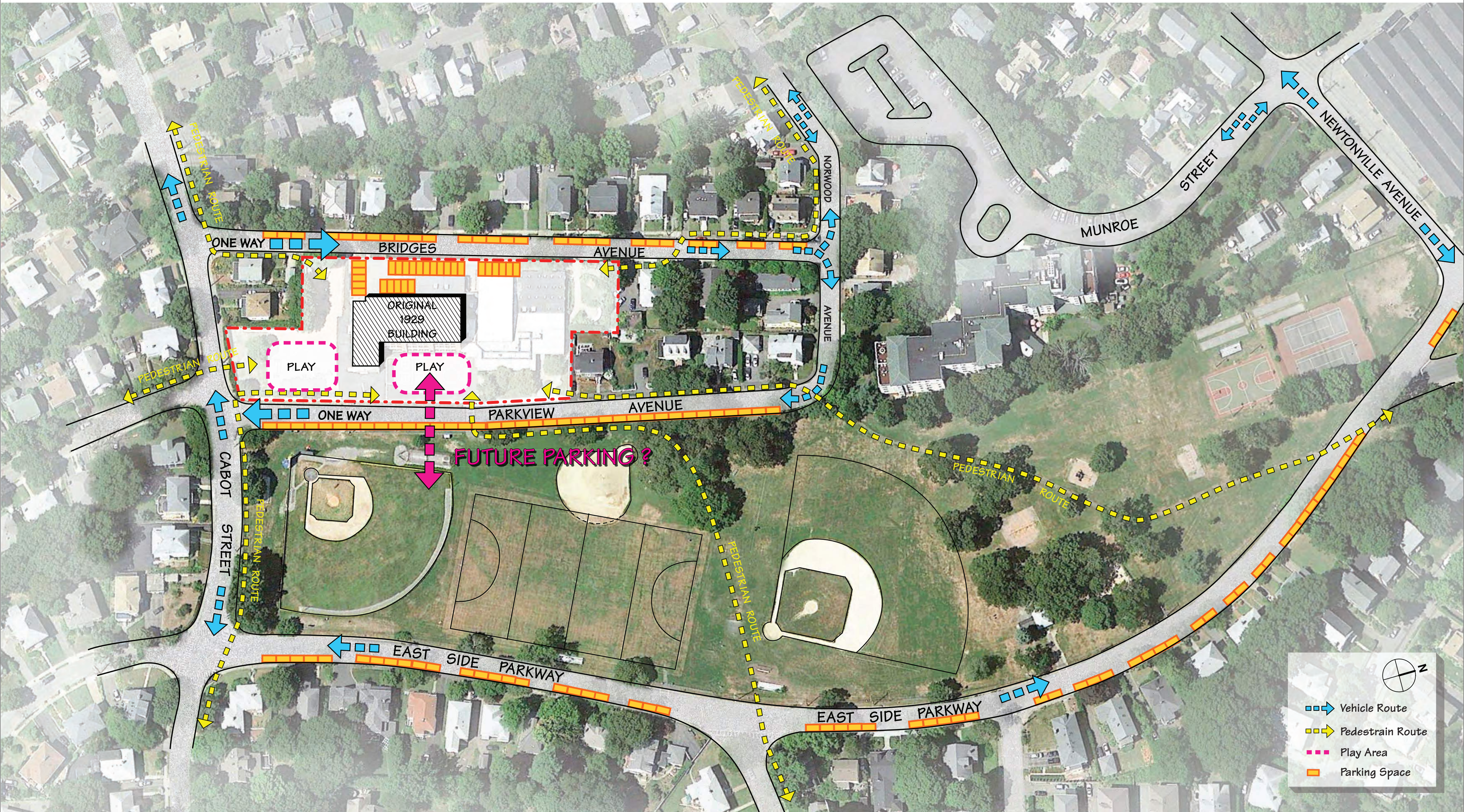


Legend:

- Vehicle Route
- Pedestrian Route
- Play Area
- Parking Space



# Cabot School Site | Neighborhood Context



# Next Steps

- CSBC Meetings 3/12, 4/30, 5/21
- Parks and Recreation Meeting 4/27
- Board of Aldermen/  
School Committee Meeting 4/6
- Public Forum #2 (Date TBA)



# Public Input



[www.newtonma.gov/gov/building/capital\\_projects/cabot\\_school](http://www.newtonma.gov/gov/building/capital_projects/cabot_school)