

Notes:
All plants to be selected from Kenrick Nursery Catalogues 1831-45

- Fruit Trees:**
Proposed: 11
Plant Later: 2
Pears (min. 2 varieties needed)
Bartlett (Bon Cretien)
St. Germain
Beurre d'Arenberg
Verte d'Hiver
Peaches: (min. 1 variety needed)
Bellegarde
Early York
Morris' white rareripe
Morris' red rareripe
Noblesse
Apples: (min. 1 variety needed)
Baldwin
Roxbury Russet
Seek No Further
Cherries: (min. 1 variety needed)
Black Tartarian
Ox Heart
Duke (May or German)
Plums: (min. 1 variety needed)
German Gage
Winter Damson
Wilmots Early Orleans
Bleekers German Gage

- Garden Plants:**
Shrub roses
Peonies
Eupatorium
Primrose
Morning Glory
Foxglove
Gas Plant
Daylily
Hollyhock
Iris
Lilies
Cardinal Flower
Larkspur
Monks Hood
Aster
Flax
Phlox
China pinks
Mayapple
Thalictrum
Lychnis
Dames Rocket
Veronica
Columbine
Yucca
Tradescantia
Dahlias
Malvas
Dye Plants
Herbs

Exhibit Garden intended for annual plant demonstrations (vegetables, annuals, dye plants, seasonal fruits, etc.)

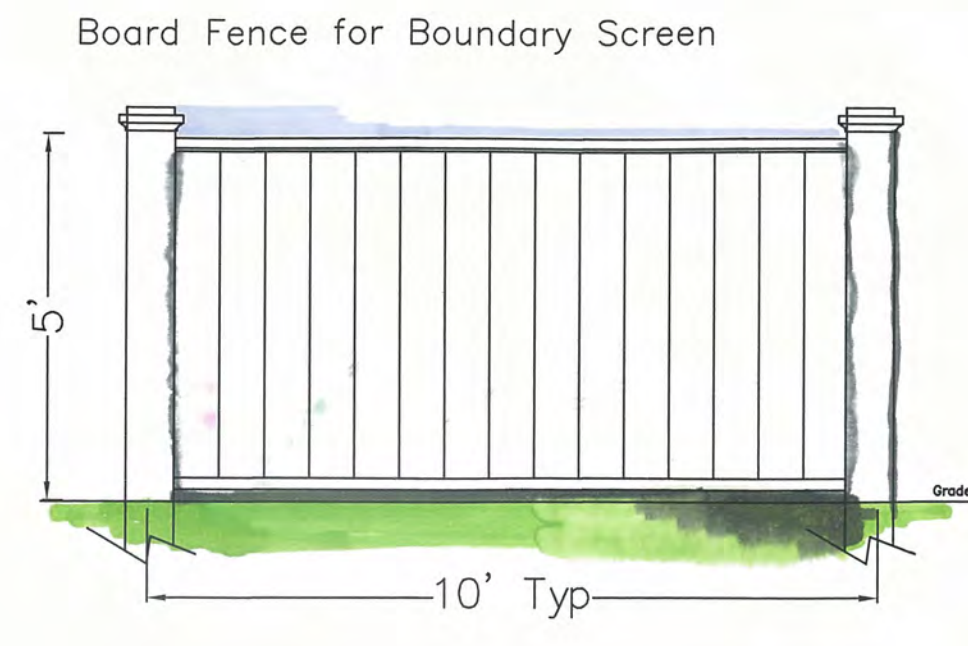
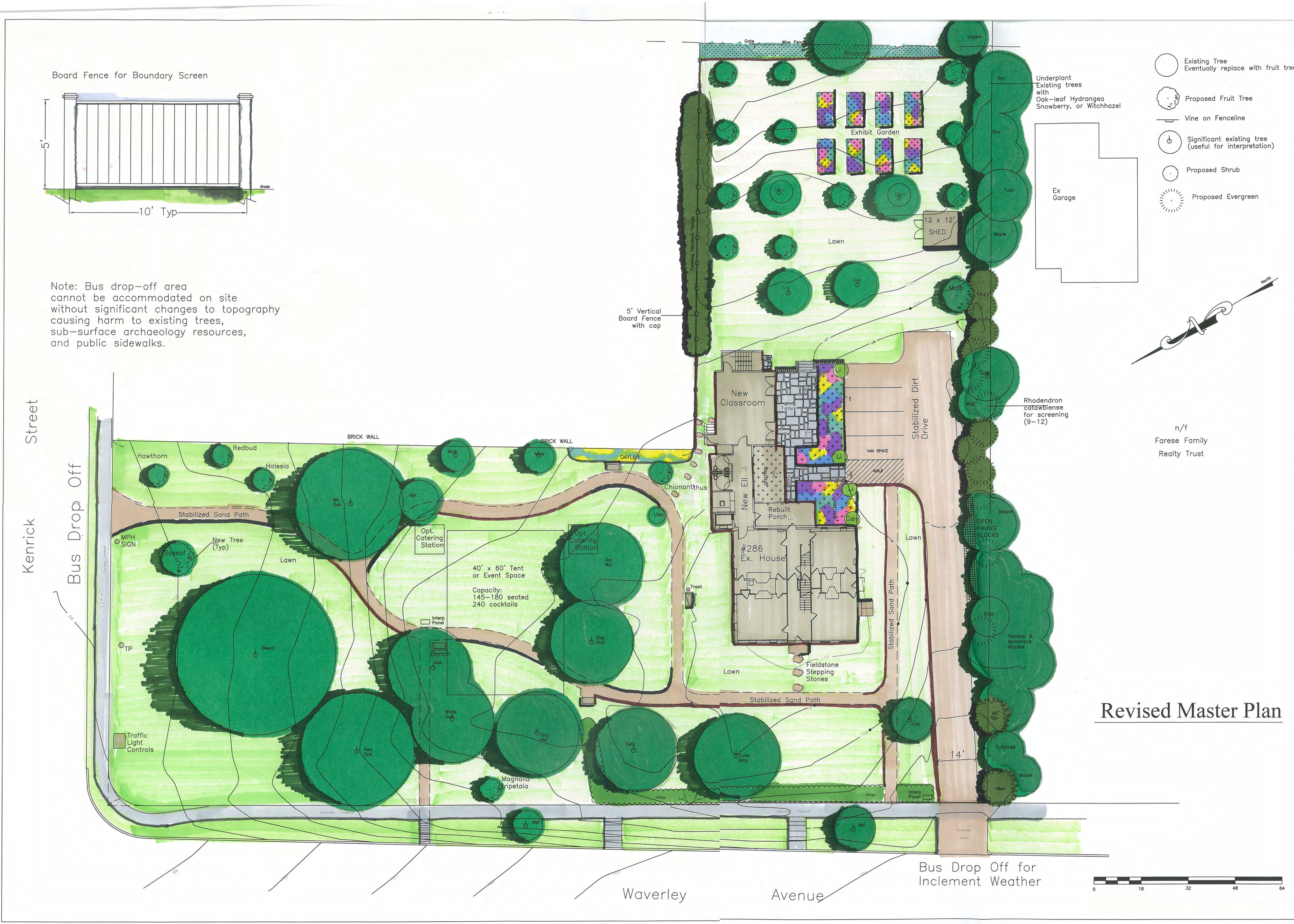
Date: Rev. December 1, 2009
Drawn By: LB
Checked by: LB
Based on survey provided by:
Verne T. Porter, Jr. PL5
Land Surveyors and Civil Engineers
354 Elliot Street
Newton, MA 02464

Durant Kenrick Homestead
286 Waverley Ave.
Newton, MA

Newton Historical Society



L-2



Note: Bus drop-off area cannot be accommodated on site without significant changes to topography causing harm to existing trees, sub-surface archaeology resources, and public sidewalks.

Revised Master Plan

Bus Drop Off for Inclement Weather

