



Angier School Building Committee / Design Review Committee Meeting

May 29, 2014

Angier Elementary School



W.T. RICH COMPANY, INC.



Project Management

DiNisco Design
PARTNERSHIP

DiNisco Design www.dinisco.com

Budget | 60% CD Total Project Summary

	MSBA BUDGET
Feasibility Study (currently funded)	\$ 717,659
Administration (includes OPM fees for DD through Closeout)	\$ 970,000
Architecture and Engineering (DD through Closeout)	\$ 2,491,100
CM at Risk Pre-Construction Services (DD through Closeout)	\$ 123,600
Construction Costs	\$ 26,231,698
Off-Site Improvements (MSBA Excluded)	\$ 3,948,259
Miscellaneous Project Costs (Utility Fees, Testing, Moving)	\$ 230,000
Furnishings and Educational Technology	\$ 1,116,000
Potentially Eligible Construction Contingency	\$ 1,311,474
Potentially Eligible Owner's (soft cost) Contingency	\$ 360,210
Total Project Budget	\$ 37,500,000
Key Project Metrics	
Design Enrollment (Planned Number of Students)	465
Total Building Gross Floor Area (Square Feet)	74,960
60 % CD Estimated Construction Costs (WT Rich, CM)	\$ 26,230,704
60% CD Construction Costs: Favorable Variance to Budget	\$ (994)
<i>Note: No new substantive Value Engineering was required at this phase</i>	
Budgeted Construction Cost per Gross Square Foot	\$ 349.94
Estimated Construction Cost per Gross Square Foot	\$ 349.93

Budget

60% CD Budget Status Update:

- The 60% documents prepared by DDP were complete and well developed
- The 2 independent cost estimates were reconciled to within less than 0.2%
- The estimates include bid values for the 1st interim GMP (contract awarded)
 - Some contingency funds were shifted within the “Off Site Improvements” budget lines
- No new Value Engineering items of any substance were necessary
 - Some landscaping which had been added since DD was backed out
 - Decorative ribs on the low membrane roof (not visible from the ground) were removed
 - Some linoleum floor was shifted from sheet goods to tile, same material
- The project remains on schedule and on budget

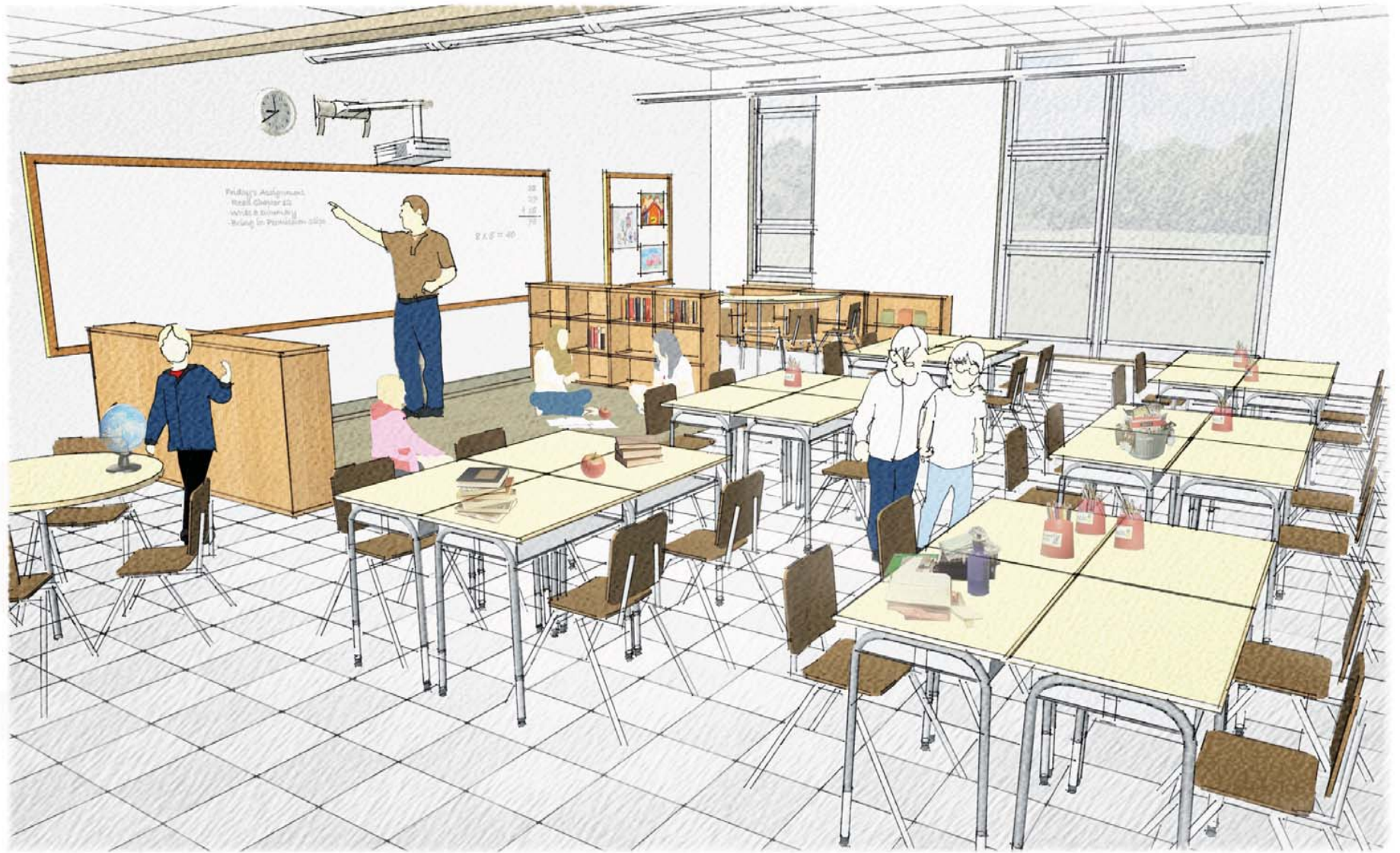
Site Plan



Entry Perspective



Typical Classroom



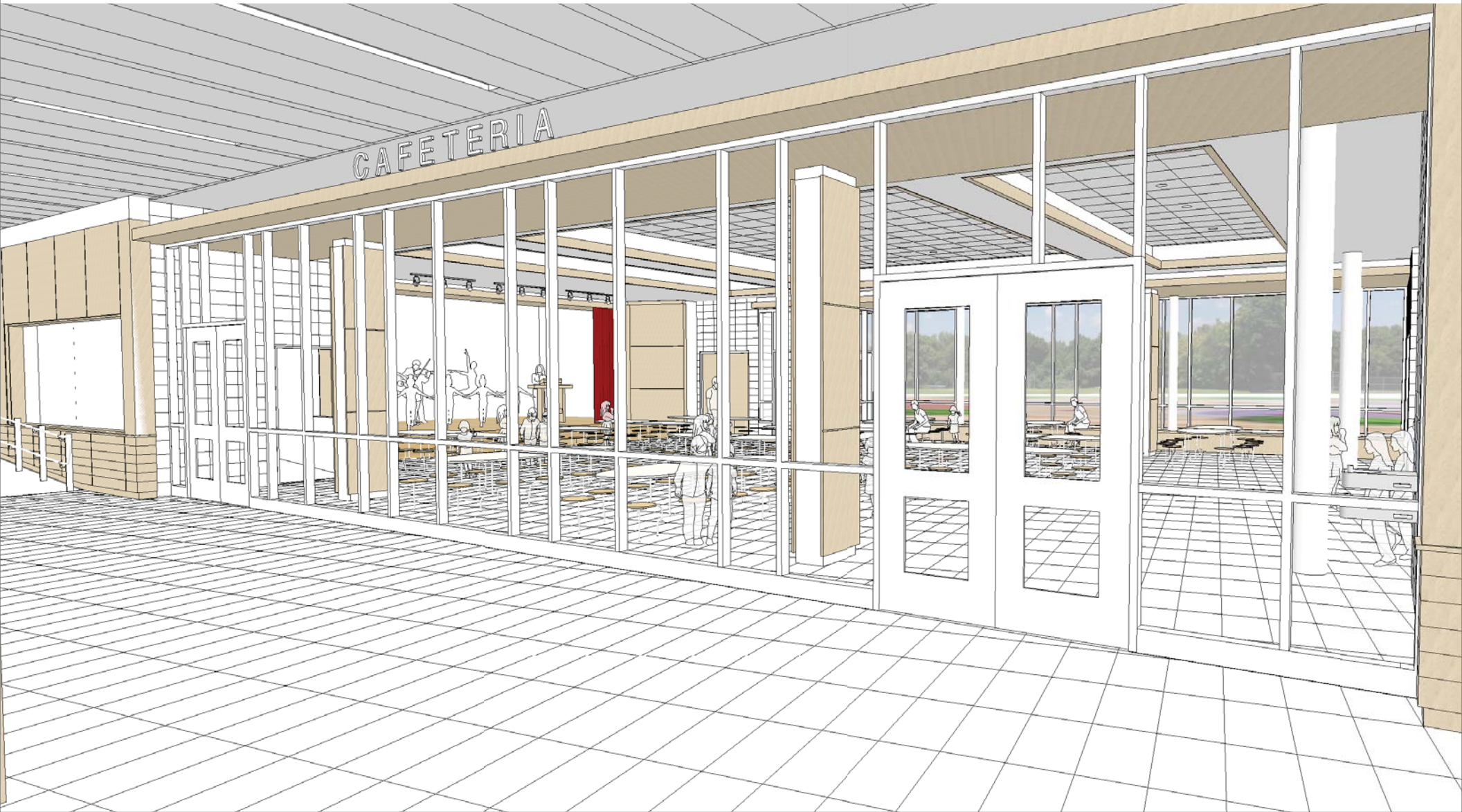
Typical Classroom



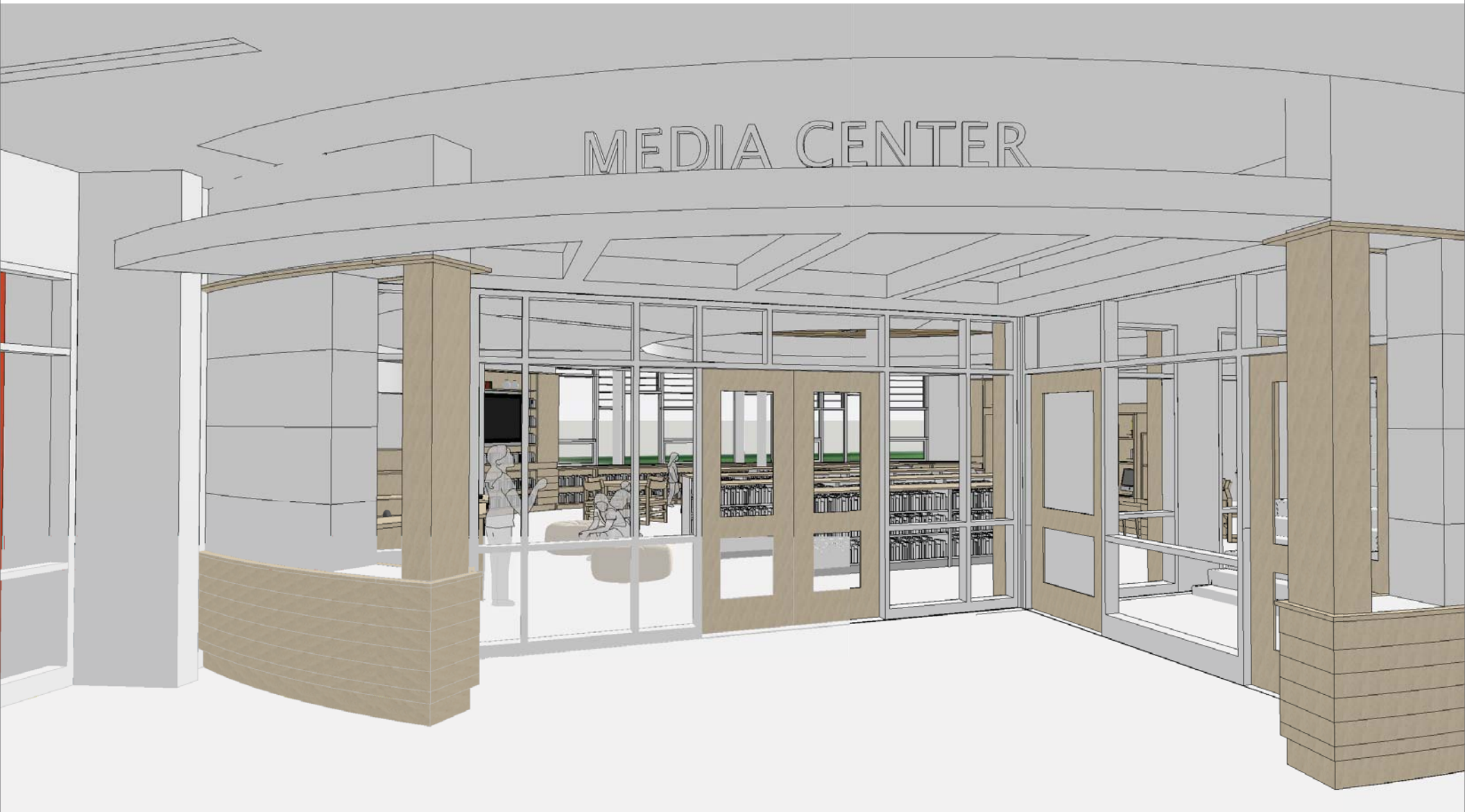
Interior | Lobby



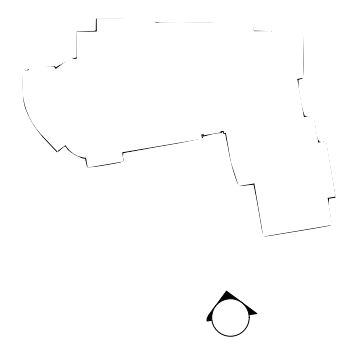
Interior | Cafeteria



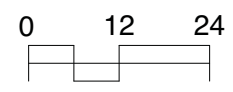
Interior | Library



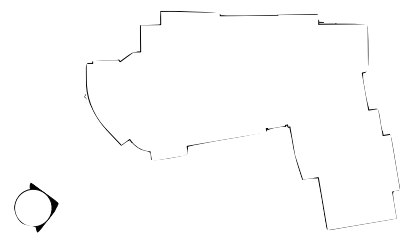
East Elevation



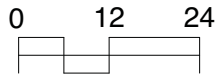
East Elevation



South Elevation



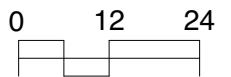
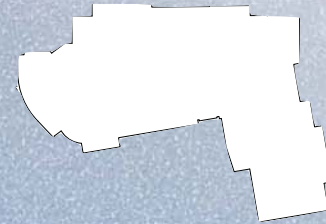
South Elevation



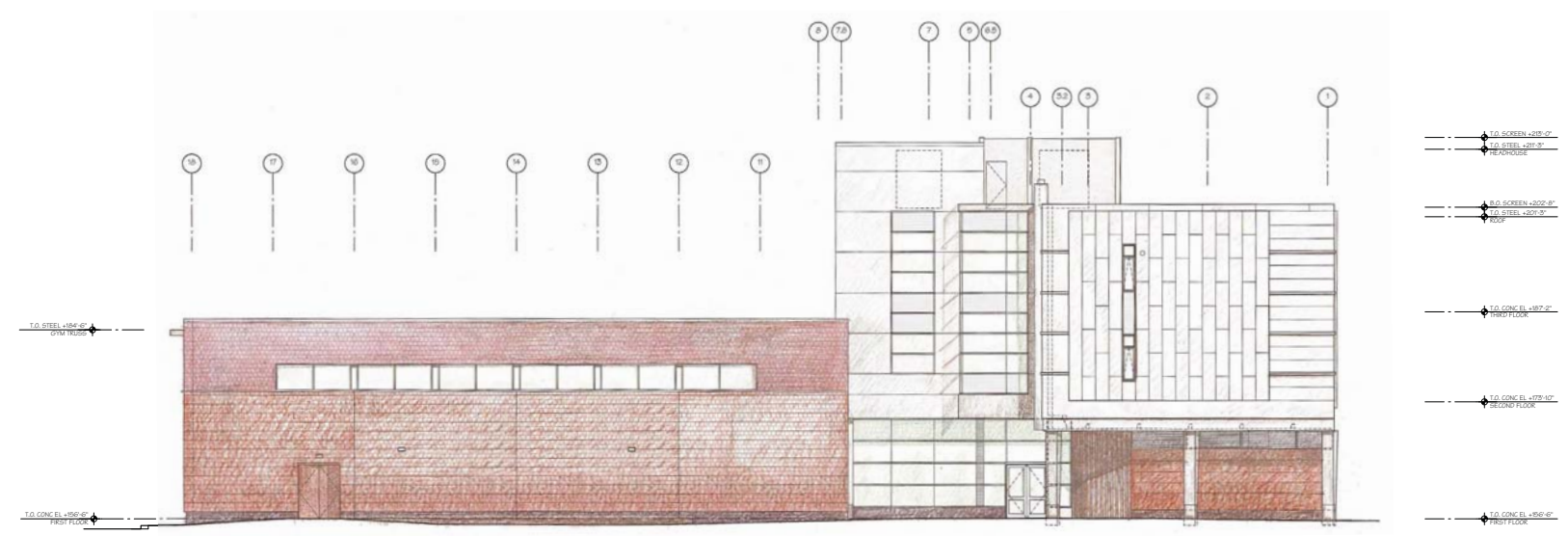
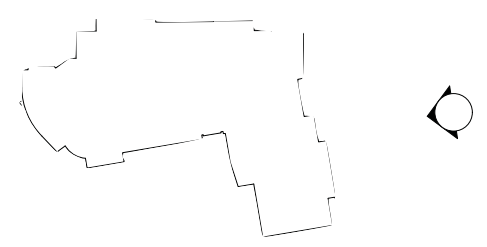
West Elevation



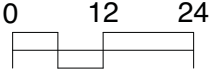
West Elevation



North Elevation



North Elevation



Site Plan | Rear Entrance



Rear Entrance



Aerial Perspective



Upcoming Construction Schedule Milestones

- June 9 - June 20 Tree Removal
- June 23 - July 7 Onsite Mobilization
- July 2014 - September 2014 Site Preparation
Building Abatement
Building Demolition
- October 2014 – June 2015 Site Work
Foundations
Exterior Shell
Erect Structural Steel



Angier School Building Committee / Design Review Committee Meeting

May 29, 2014

Angier Elementary School



W.T. RICH COMPANY, INC.



Project Management

DiNisco Design
PARTNERSHIP

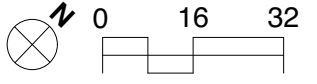
DiNisco Design www.dinisco.com

First Floor Plan



LEGEND

- CLASSROOM
- SPED
- MEDIA CENTER
- ART / MUSIC
- STAGE
- GYMNASIUM
- CAFETERIA / KITCHEN
- ADMINISTRATION
- BUILDING SERVICES
- CIRCULATION

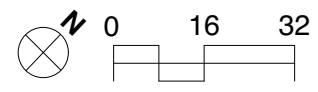


Second Floor Plan



LEGEND

- CLASSROOM
- SPED
- MEDIA CENTER
- ART / MUSIC
- STAGE
- GYMNASIUM
- CAFETERIA / KITCHEN
- ADMINISTRATION
- BUILDING SERVICES
- CIRCULATION



Third Floor Plan



LEGEND	
Yellow	CLASSROOM
Light Green	SPED
Yellow	MEDIA CENTER
Light Blue	ART / MUSIC
Blue	STAGE
Red	GYMNASIUM
Orange	CAFETERIA / KITCHEN
Green	ADMINISTRATION
Brown	BUILDING SERVICES
Grey	CIRCULATION