



CITY OF NEWTON SOLAR PV-PHASE 3

JANUARY 2019



ZERVAS ELEMENTARY ROOFTOP

NOT FOR CONSTRUCTION

- NOTES:**
1. SHADING PATTERN IS CALCULATED BASED ON JUNE 21ST FROM 7AM TO 5PM, FEBRUARY 21ST FROM 9AM TO 3PM, AND DECEMBER 21ST AT NOON, TAKING INTO ACCOUNT SITE LATITUDE AND LONGITUDE.
 2. SHADING FOR OBJECTS NOT IMPACTING THE PV SYSTEM IS NOT SHOWN.

SCALE: 1" = 16' WHEN PRINTED 36" x 24"
 DRAWN BY: SS
 CHECKED BY: SS
 DATE: NOV. 28, 2019
 REVISIONS:

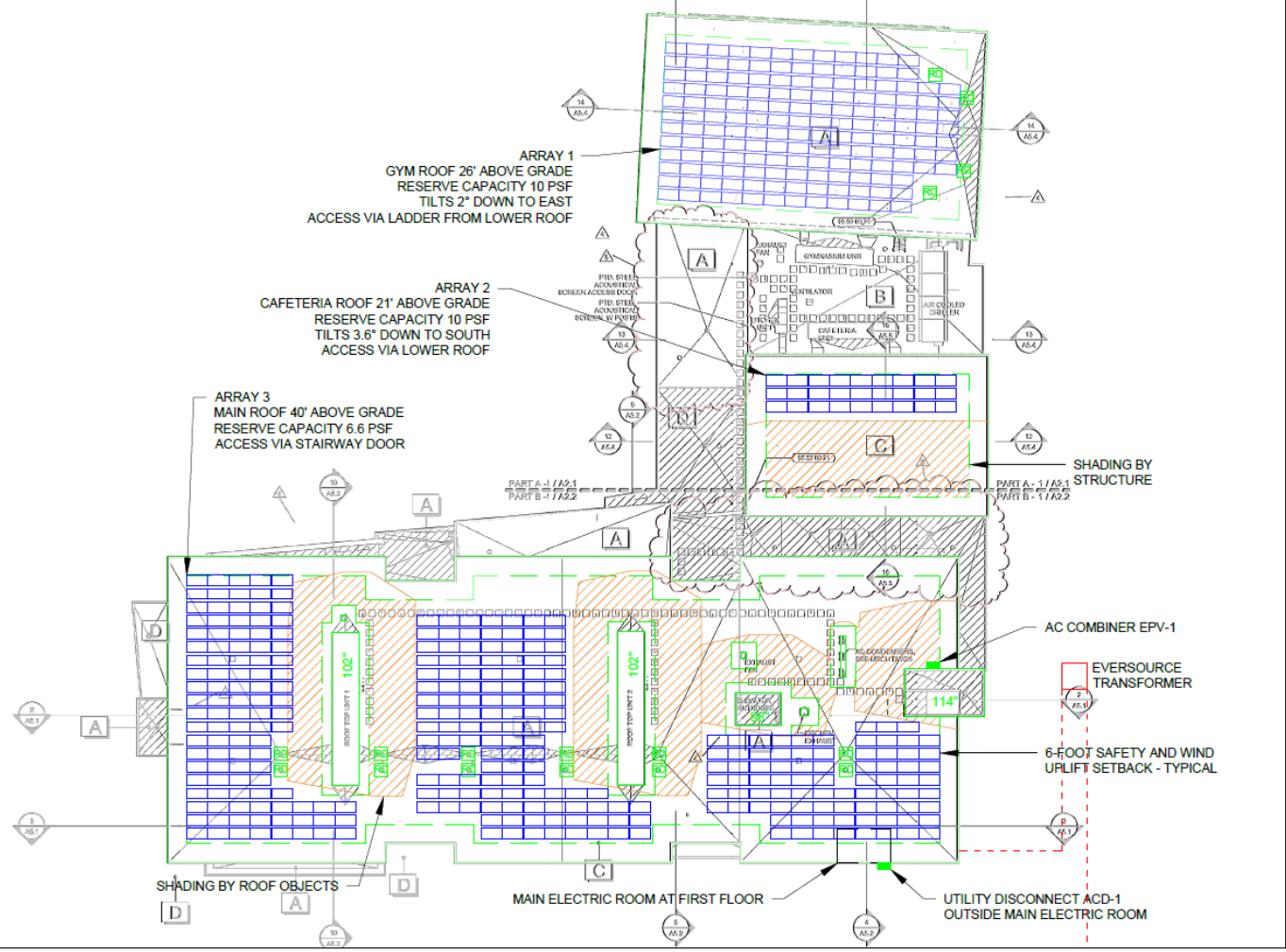
CITY OF NEWTON - PHASE 3 SOLAR
 30 BEETHOVEN AVENUE
 NEWTON, MASSACHUSETTS 02468
 ZERVAS ELEMENTARY SCHOOL ROOFTOP PV ARRAY
 181.30 kWp DC STC PV ARRAY (166.6 kW AC)
 PHOTOVOLTAIC ARRAY LAYOUT

111 Spear Street, Suite #10
 Newton, Massachusetts 01704
 (508) 681-2200



POWER TABLE											
ARRAY				MOUNT			INVERTER				
LOCATION	# OF MODULES	MODULE TYPE	kWp	AZIMUTH	TILT	TYPE	TYPE	SIZE (kW)	QTY	EFFICIENCY	kW AC
ARRAYS 1-3	490	JAM6(K)-72-370/PR	181.30	170	5	BALLASTED	SOLAREEDGE	100	1	98.5%	100
							SOLAREEDGE	66.6	1	98.5%	67
TOTAL	490		181.30						2		167

BEETHOVEN AVENUE



ZERVAS ELEMENTARY SCHOOL ROOFTOP - OVERALL ARRAY LAYOUT
 SCALE: 1"=16' WHEN PRINTED 36" x 24"





F.A. DAY MIDDLE SCHOOL ROOFTOP

ARRAY		POWER TABLE			MOUNT		INVERTER					
LOCATION	# OF MODULES	MODULE TYPE	kWp	AZIMUTH	TILT	TYPE	TYPE	SIZE (kW)	QTY	EFFICIENCY	KW AC	
ARRAY 1	306	JAM72S01-370/PR	113.22	197	5	BALLASTED	SolarEdge	100	1	98.5%	100	
ARRAY 2	190	JAM72S01-370/PR	70.3	197	5	BALLASTED	SolarEdge	66.6	1	98.5%	67	
ARRAY 3	190	JAM72S01-370/PR	70.3	197	5	BALLASTED	SolarEdge	66.6	1	98.5%	67	
TOTAL	686		253.82						3		233	

NOT FOR CONSTRUCTION

- NOTES:**
- SHADING PATTERN IS CALCULATED BASED ON JUNE 21ST FROM 7:30AM TO 4:30PM, FEBRUARY 21ST FROM 9AM TO 3PM, AND DECEMBER 21ST AT NOON, TAKING INTO ACCOUNT SITE LATITUDE AND LONGITUDE.
 - SHADING FOR OBJECTS NOT IMPACTING THE PV SYSTEM IS NOT SHOWN.
 - GROUND SNOW LOAD = 40 PSF, BASIC WIND SPEED = 105 MPH, EXPOSURE TYPE C.

SCALE: 1" = 20' WHEN PRINTED 36" x 24"
 DRAWN BY: SS
 CHECKED BY: [Name]
 DATE: 02/23/2018
 REVISIONS:



CITY OF NEWTON - PHASE 3 SOLAR
 21 MINOT PLACE
 NEWTON, MASSACHUSETTS 02460
 F. A. DAY MIDDLE SCHOOL ROOFTOP PV ARRAY
 253.82 kWp/DC STC PV ARRAY (233 kWAC)
 PHOTOVOLTAIC ARRAY LAYOUT

AMERESCO
 111 State Street, Suite 410
 Framingham, Massachusetts 01701
 (508) 861-2200

AMERESCO, INC. IS AN EQUAL OPPORTUNITY AND AFFIRMATIVE ACTION EMPLOYER. WE DO NOT DISCRIMINATE OR INTEND TO DISCRIMINATE ON THE BASIS OF RACE, GENDER, RELIGION, NATIONAL ORIGIN, ANCESTRY, COLOR, SEX, SEXUAL ORIENTATION, MARITAL STATUS, PREGNANCY, AGE, OR DISABILITY. WE ARE AN EQUAL OPPORTUNITY AND AFFIRMATIVE ACTION EMPLOYER. WE DO NOT DISCRIMINATE OR INTEND TO DISCRIMINATE ON THE BASIS OF RACE, GENDER, RELIGION, NATIONAL ORIGIN, ANCESTRY, COLOR, SEX, SEXUAL ORIENTATION, MARITAL STATUS, PREGNANCY, AGE, OR DISABILITY.

F. A. DAY MIDDLE SCHOOL - OVERALL ARRAY LAYOUT
 SCALE: 1"=20' WHEN PRINTED 36" x 24"





EDUCATION CENTER ROOFTOP

POWER TABLE											
ARRAY			MOUNT				INVERTER				
LOCATION	# OF MODULES	MODULE TYPE	kWp	AZIMUTH	TILT	TYPE	TYPE	SIZE (kW)	QTY	EFFICIENCY	KW AC
ARRAYS 1-4	218	JAM6(K)-72-370/PR	80.66	VARIES	5	BALLASTED	SolarEdge	66.6	1	98.0%	66.6
TOTAL	218		80.66						1		66.6

NOT FOR CONSTRUCTION

NOTES:

- SHADING PATTERN IS CALCULATED BASED ON JUNE 21ST FROM 7:30AM TO 4:30PM, FEBRUARY 21ST FROM 8AM TO 3PM AND DECEMBER 21ST AT NOON, TAKING INTO ACCOUNT SITE LATITUDE AND LONGITUDE.
- SHADING FOR OBJECTS NOT IMPACTING THE PV SYSTEM IS NOT SHOWN.
- GROUND SNOW LOAD = 40 PSF, BASIC WIND SPEED = 105 MPH, EXPOSURE TYPE C.

SCALE: 1" = 16' WHEN PRINTED 36" x 24"

DRAWN BY: SS

CHECKED BY:

DATE: NOV. 21, 2018

REVISIONS:



CITY OF NEWTON - PHASE 3 SOLAR
 100 WALNUT STREET
 NEWTON, MASSACHUSETTS 02460
 EDUCATION CENTER ROOFTOP PV ARRAY
 80.66 kWp DC STC PV ARRAY (66.6 kW AC)
 PHOTOVOLTAIC ARRAY LAYOUT

111 Spinn Street, Suite 410
 Newton, Massachusetts 02459
 (508) 661-2200

AMERESCO

Copyright 2017 Ameresco. This document is the property of Ameresco, Inc. and is intended for use only for the project and location specified. All other rights reserved. No part of this document may be reproduced, stored in a retrieval system, or transmitted in any form or by any means, electronic, mechanical, photocopying, recording, or by any information storage and retrieval system, without the prior written permission of Ameresco, Inc. The information contained herein is for informational purposes only and does not constitute an offer of any financial product or service. Ameresco, Inc. is not a financial institution and is not licensed to sell any financial product or service. This document is not to be used for any other purpose without the prior written permission of Ameresco, Inc.

EDUCATION CENTER - OVERALL ARRAY LAYOUT
 SCALE: 1"=16' WHEN PRINTED 36" x 24"





FIRE STATION 3 ROOFTOP

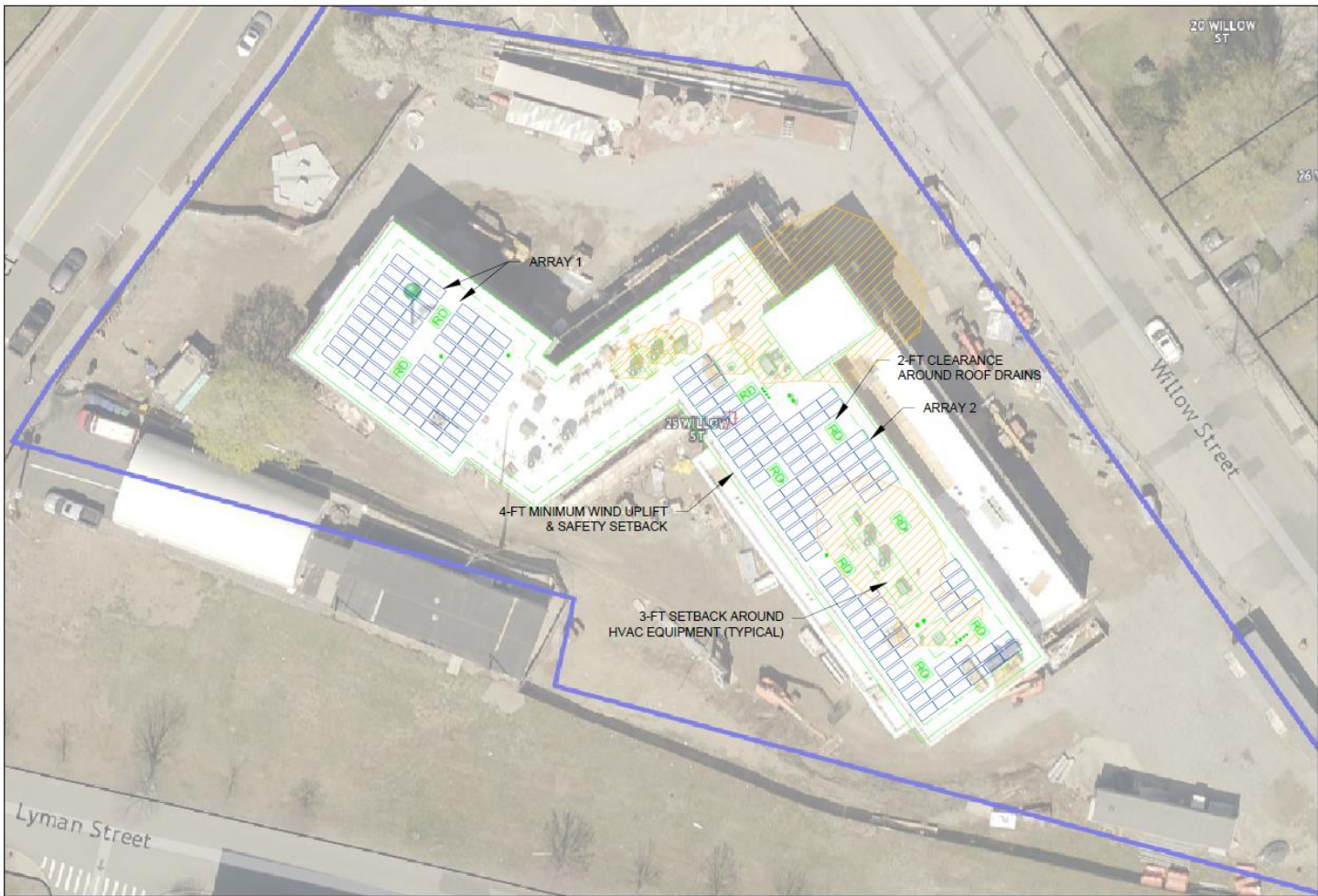
NOT FOR CONSTRUCTION

POWER TABLE											
ARRAY				MOUNT			INVERTER				
LOCATION	# OF MODULES	MODULE TYPE	kWp	AZIMUTH	TILT	TYPE	TYPE	SIZE (kW)	QTY	EFFICIENCY	kW AC
ARRAYS 1 & 2	171	JAM6(K)-72-370/PR	63.27	VARIES	5	BALLASTED	SolarEdge	66.6	1	98.0%	67
TOTAL	171		63.27						1		67

NOTES:

- SHADING PATTERN IS CALCULATED BASED ON JUNE 21ST FROM 7:00AM TO 4:30PM, FEBRUARY 21ST FROM 9AM TO 3PM, AND DECEMBER 21ST AT NOON, TAKING INTO ACCOUNT SITE LATITUDE AND LONGITUDE.
- SHADING FOR OBJECTS NOT IMPACTING THE PV SYSTEM IS NOT SHOWN.
- GROUND SNOW LOAD = 40 PSF, BASIC WIND SPEED = 105 MPH, EXPOSURE TYPE C.

SCALE: SS
 DRAWN BY: SS
 CHECKED BY: LA
 DATE: 01/25/2018
 REVISED(S):



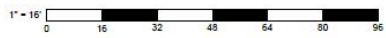
CITY OF NEWTON - PHASE 3 SOLAR
 1164 CENTRE STREET
 NEWTON, MASSACHUSETTS 02459
 FIRE STATION #3 ROOFTOP PV ARRAY
 63.27 kWp DC STC PV ARRAY (66.6 kW AC)
 PHOTOVOLTAIC ARRAY LAYOUT


111 State Street, Suite 415
 Framingham, Massachusetts 01701
 (508) 881-2300



Copyright 2018 Ameresco. This document is the property of Ameresco and is not to be distributed, copied, or reproduced in any form without the written permission of Ameresco. All rights reserved. The information contained herein is for informational purposes only and does not constitute an offer of any financial product or service. The information contained herein is not intended to be used as a substitute for professional advice. Ameresco is not responsible for any errors or omissions in this document. The information contained herein is subject to change without notice.

FIRE STATION #3 AND HEADQUARTERS - OVERALL ARRAY LAYOUT
 SCALE: 1"=16' WHEN PRINTED 36" x 24"





**NEWTON NORTH HS
LOWELL AVE.
CANOPY**









NEWTON NORTH HS WALNUT ST. CANOPY

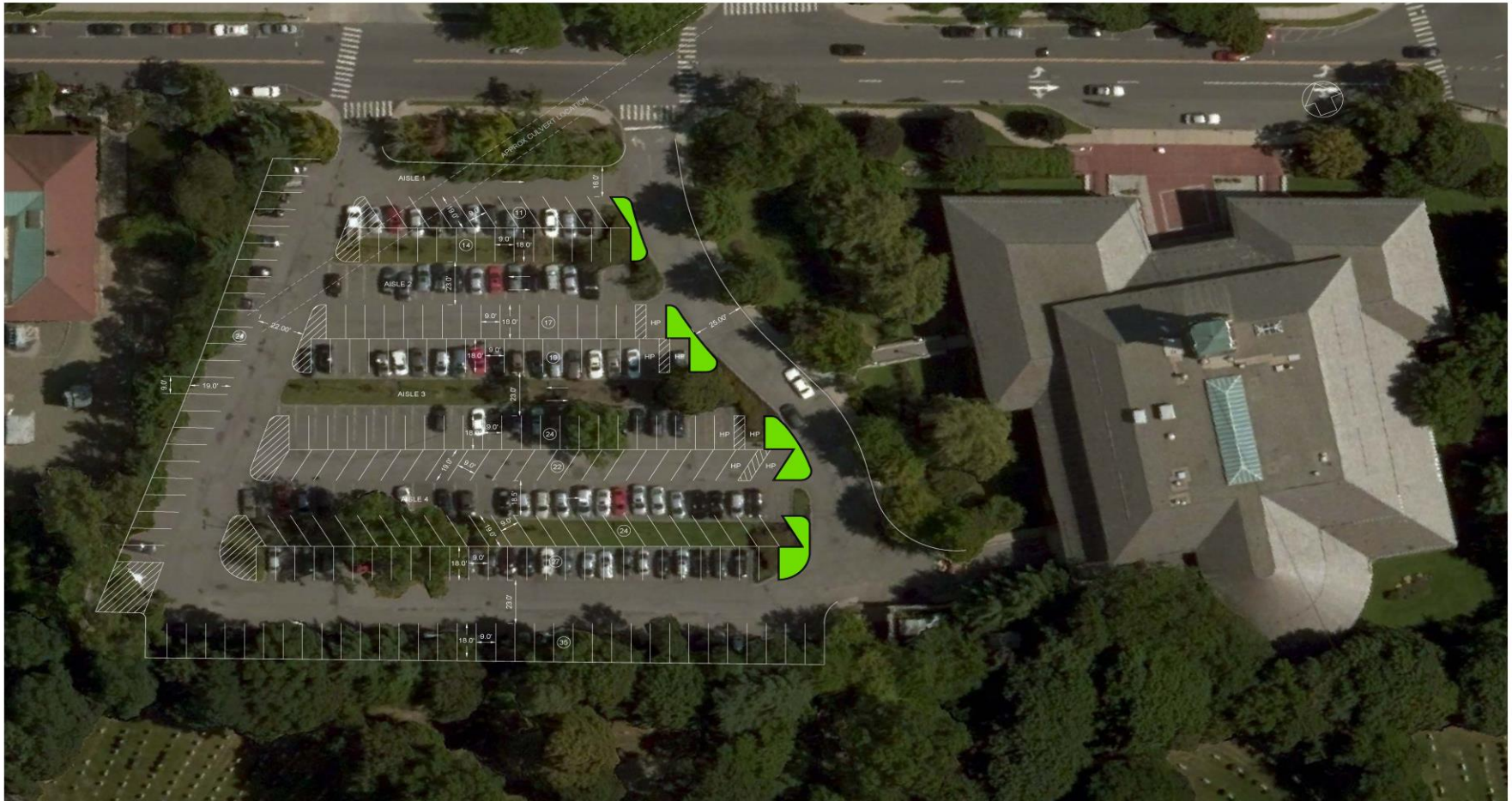




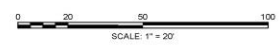
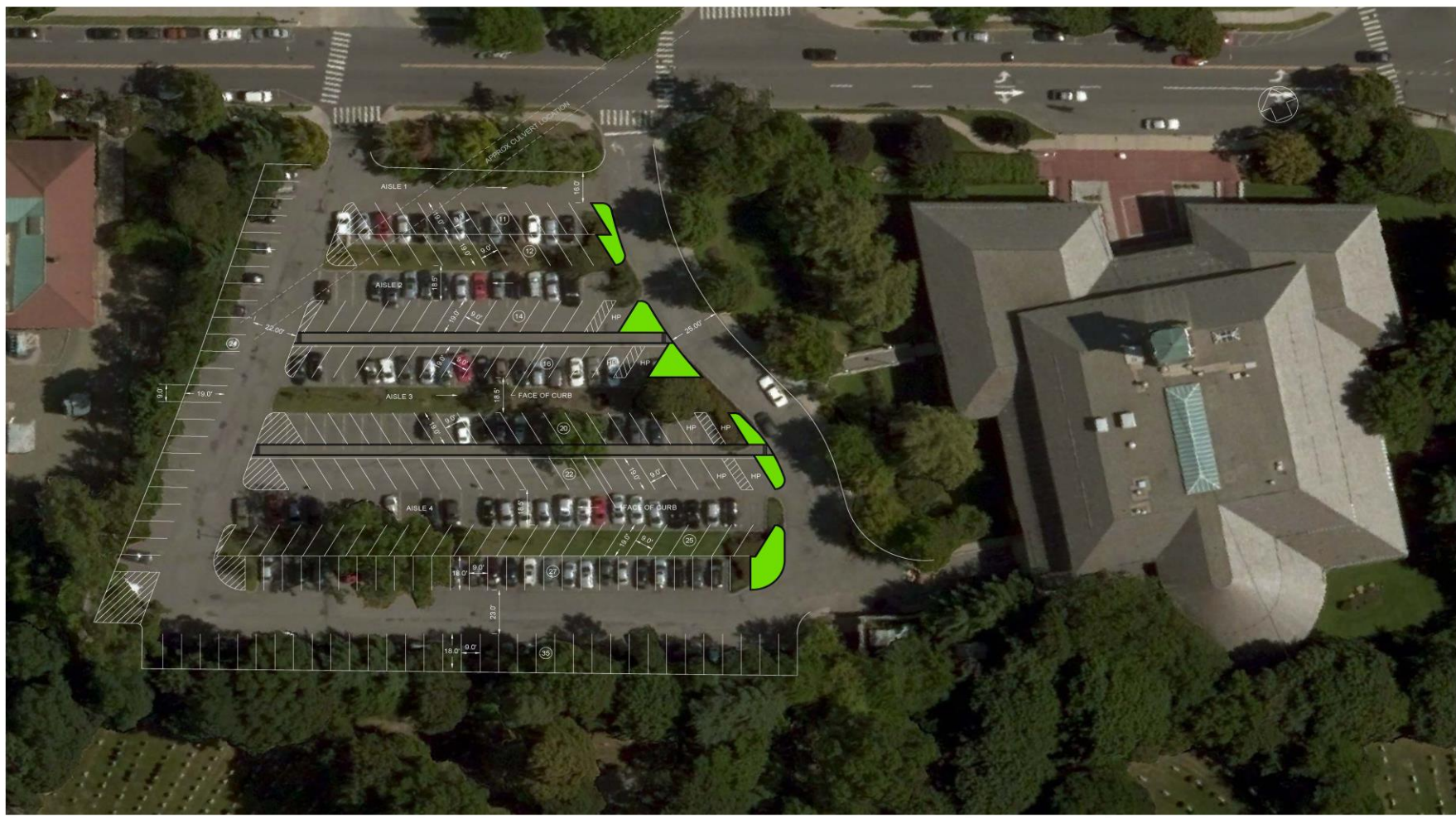


LIBRARY LOT CANOPY

LIBRARY WITH NO WALKWAYS +36 SPACES



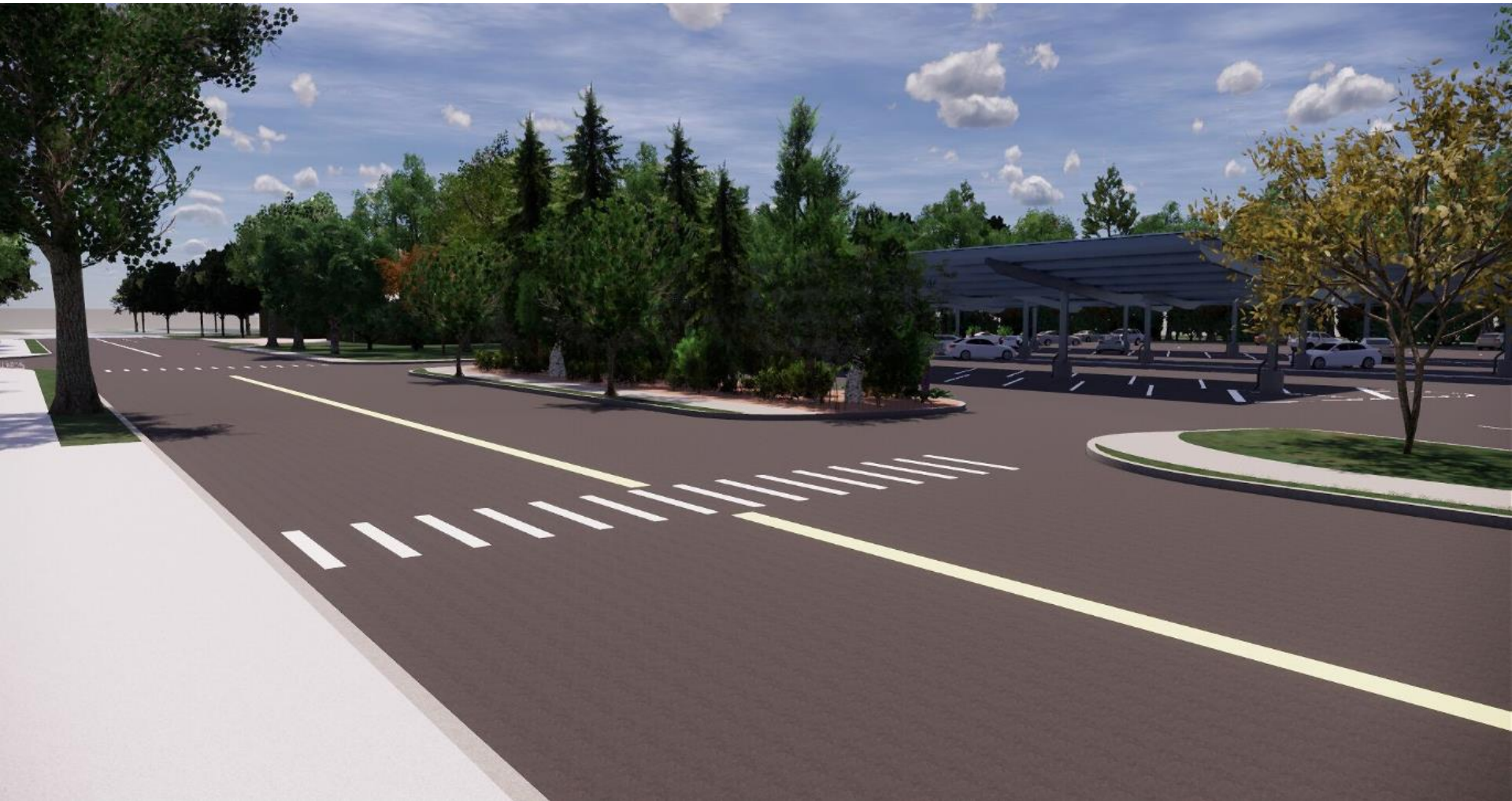
LIBRARY WITH 2 WALKWAYS +24 SPACES



LIBRARY CANOPIES













THANK YOU

Steve McDonough
Senior Development Manager
111 Speen Street, Suite 410
Framingham, MA 01701
Ph: 413-209-1608
Email: smcdonough@Ameresco.com



Your Trusted Sustainability Partner
ameresco.com