

DLA

DAVID L. ANDERSON, INC.

888 WILKINSON STREET
WEST HENRIETTA, NY 14553
PHONE: (607) 644-8400
FAX: (607) 332-5448

PROJECT NO. A-1000
FILE # 14-00000-0000
DATE: 10/12/04

SITE USE: TOURISM
OWNER: NYS LUR
DESIGN BY: D.L.

DESIGN DATE:
10/12/04

PROJECT TITLE:
ANGING
COMMUNITY
PARK

PROJECT CODE:
ANGING
COMMUNITY
PARK

PROJECT TITLE:
SITE PLAN

PROJECT NO.:
S-1





NAHANTTON ST

WINCHESTER ST

Winchester St Site

City of Newton

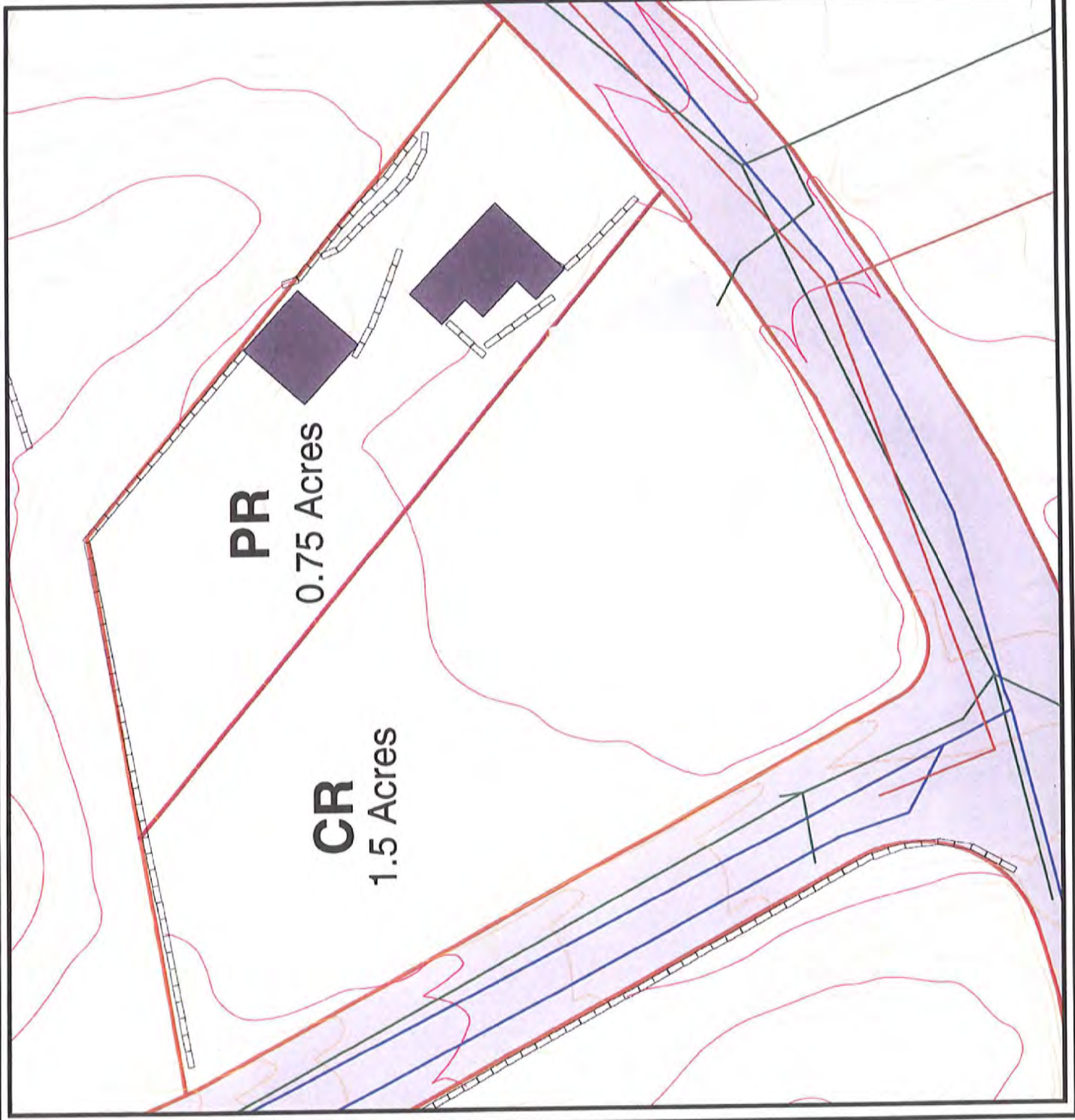
Legend	
Contours (2 ft.)	
TYPE	
Interval Contour (2 Ft)	
Index Contour (10 Ft)	
Wall	
Sewer Mains	
Water Mains	
Storm Drain Mains	
Isolated Low Points	
Property Boundaries	
Buildings	



The information on this map is from the Newton Geographic Information System (GIS). The City of Newton cannot guarantee its accuracy or approve applications based solely on GIS data. Applicants for city permits must inquire of the relevant city department for applicable requirements.

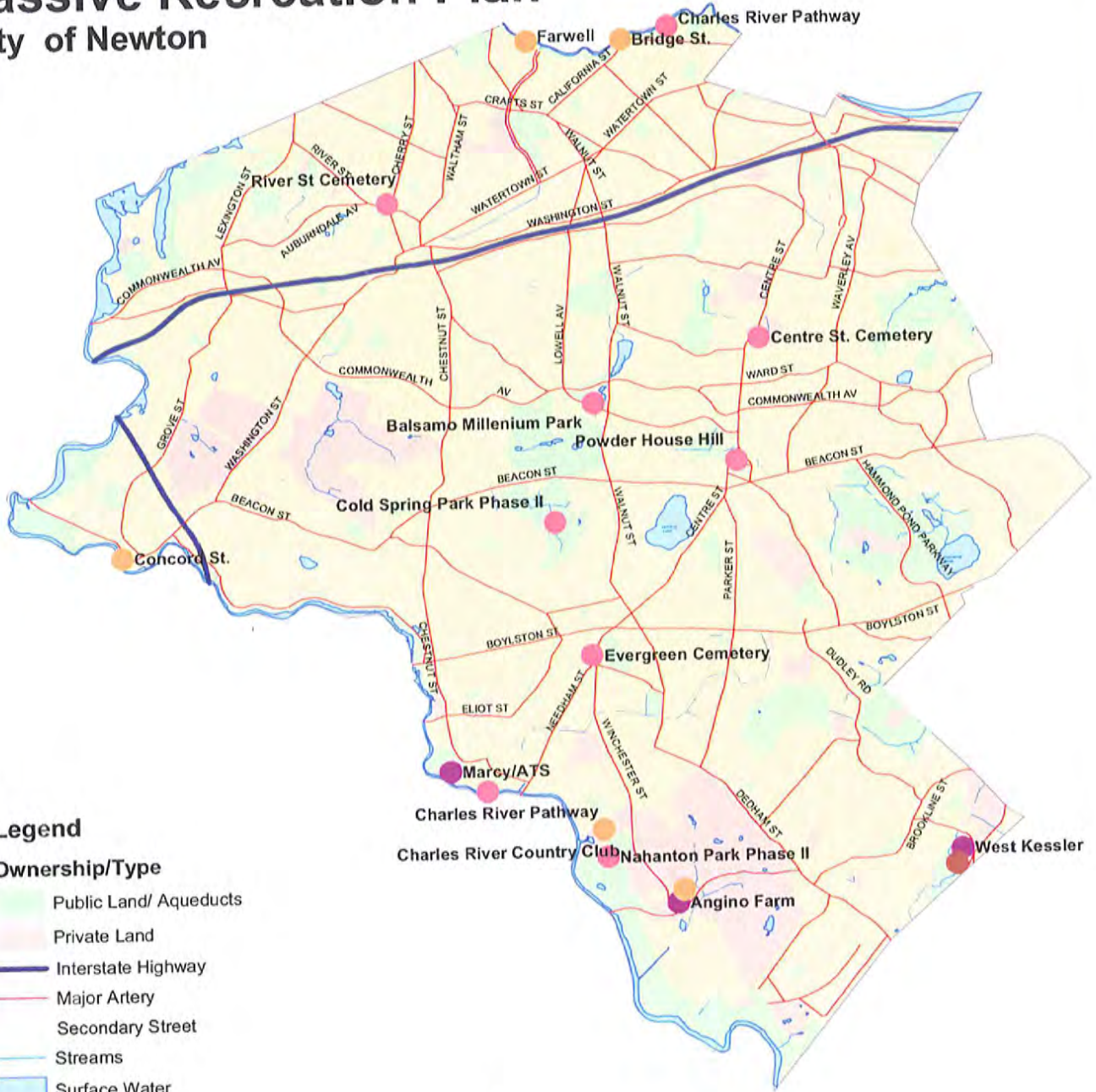
City of Newton
Mayor - David B. Cohen
GIS Administrator - Douglas Greenfield

MAP DATE: March 31, 2004



Passive Recreation Plan

City of Newton



Legend

Ownership/Type

- Public Land/ Aqueducts
- Private Land
- Interstate Highway
- Major Artery
- Secondary Street
- Streams
- Surface Water

FEATURE

- Acquisition
- Conservation Restriction
- Easement
- Improvement
- Transfer



SOURCES:

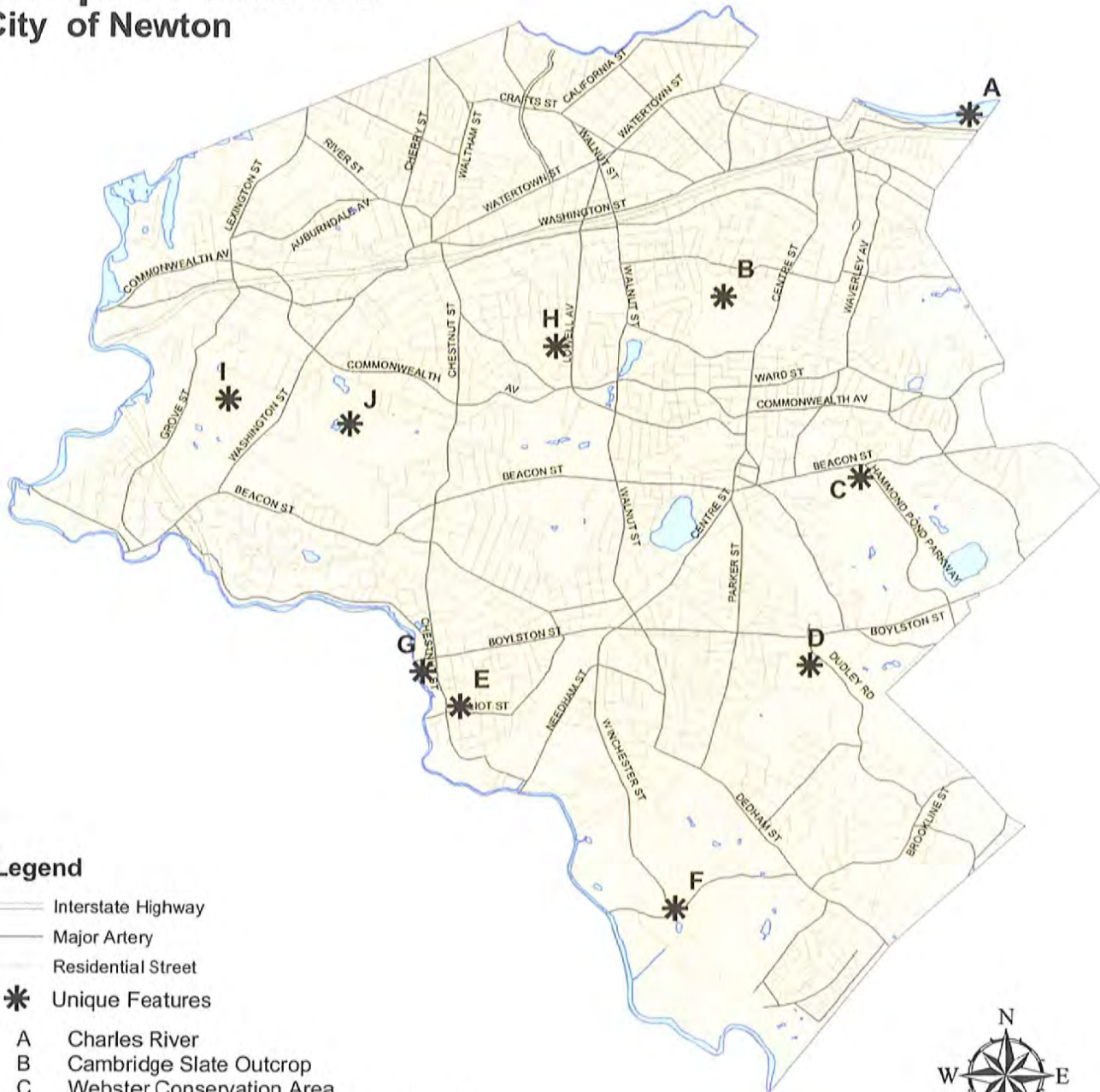
Open space information compiled by the Newton Planning Department. All other map features are from the Newton Geographic Information System (GIS). Contact the GIS Administrator for further details.



MAP DATE: February 27, 2003

Unique Features

City of Newton



Legend

- Interstate Highway
- Major Artery
- Residential Street
- * Unique Features

- A Charles River
- B Cambridge Slate Outcrop
- C Webster Conservation Area
- D Dudley Road - Brighton Volcanic Outcrop
- E Sullivan Avenue Pothole
- F Angino Farm
- G Hemlock Gorge
- H Clafin-Brighton Volcanic Outcrop
- I Auburndale Esker
- J Moffat Hill Drumlin



SOURCES:
 Scenic Roads from the Newton Planning Department, 1994. All other map features are from the Newton Geographic Information System (GIS). Contact the GIS Administrator for further details.



MAP DATE: February 27, 2003