

A topographic map of Newton, Massachusetts, showing contour lines and a road network. A vertical strip on the left side of the map is highlighted in green and yellow, indicating a specific area of interest. A white circle with a crosshair is located on this strip, with a white arrow pointing to the right towards the text.

City-wide Archaeological Reconnaissance Survey of Newton, Massachusetts

Christopher Donta, Ph.D.
University of Massachusetts, Amherst

NOTE

To protect Newton's archaeological resources, some maps have been deleted from the version of this presentation posted on the website of the Newton Community Preservation Committee:

www.newtonma.gov/cpa



Goals:

- To produce a comprehensive inventory of known archaeological resources in Newton
- To identify areas of high archaeological sensitivity in the city in order to provide a guide for planning, permitting and preservation



Specific Objectives:

- To identify known and possible pre-Contact and historical archaeological sites in Newton, and to assess possible eligibility of sites for listing in the National Register of Historic Places.
- To develop city-wide archaeological sensitivity maps illustrating the likelihood for different sections of Newton to contain Native American and historical archaeological sites.



Specific Objectives:

- To develop management recommendations for the identification and protection of significant archaeological resources and archaeologically sensitive areas, including recommendations for a local bylaw/ordinance or review procedures, and for public and private land acquisition, protection and cultural resource management strategies.
- To incorporate the findings, sensitivity maps and recommendations into the city's planning processes.



Authority:

- Archaeological Services conducted the reconnaissance survey project under contract with the Newton Planning Department.
- Funding was provided by the Community Preservation Committee of the City of Newton.
- The reconnaissance survey was conducted under a State Archaeologist's permit, issued in accordance with 950 CMR 70.00.



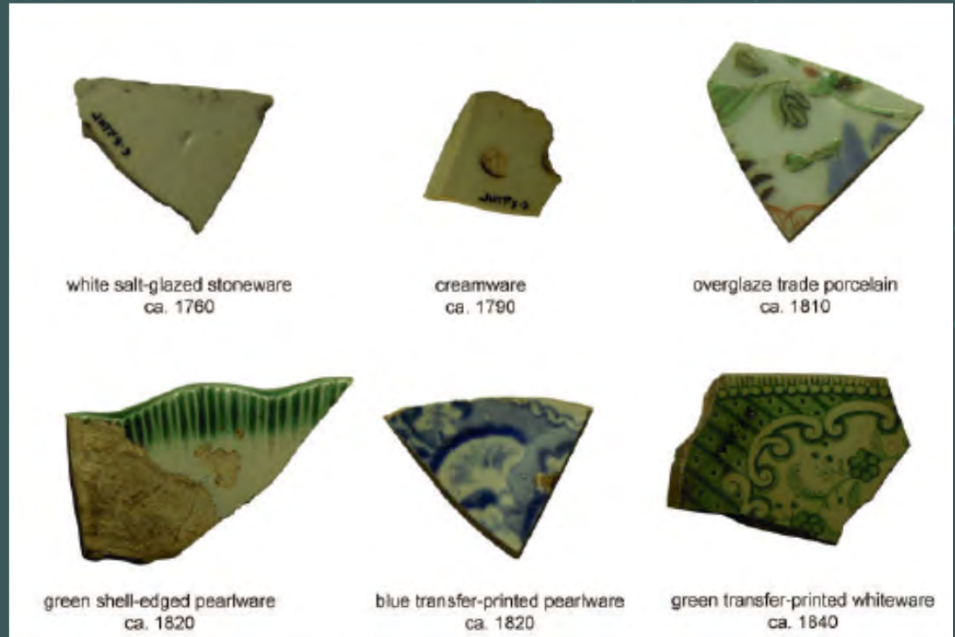
Methods:

- Background research -
 - Native American site information (Donta)
 - Massachusetts Historical Commission site files
 - Archaeological literature
 - Previous surveys
 - University of Massachusetts archaeological records
 - Newton historic sources



Methods:

- Background research -
 - Historic site information (Donohue)
 - Newton town histories
 - Historic maps
 - Previous surveys



Methods:

- Interviews with local residents
- In city reconnaissance surveys
- Collections research





Methods:

- Preparation of sensitivity maps
 - Model for Native American sites
 - Known site characteristics; topography, soils, drainage
 - Model for Historic period sites
 - Areas of settlement; roadways; knowledge of city historic development



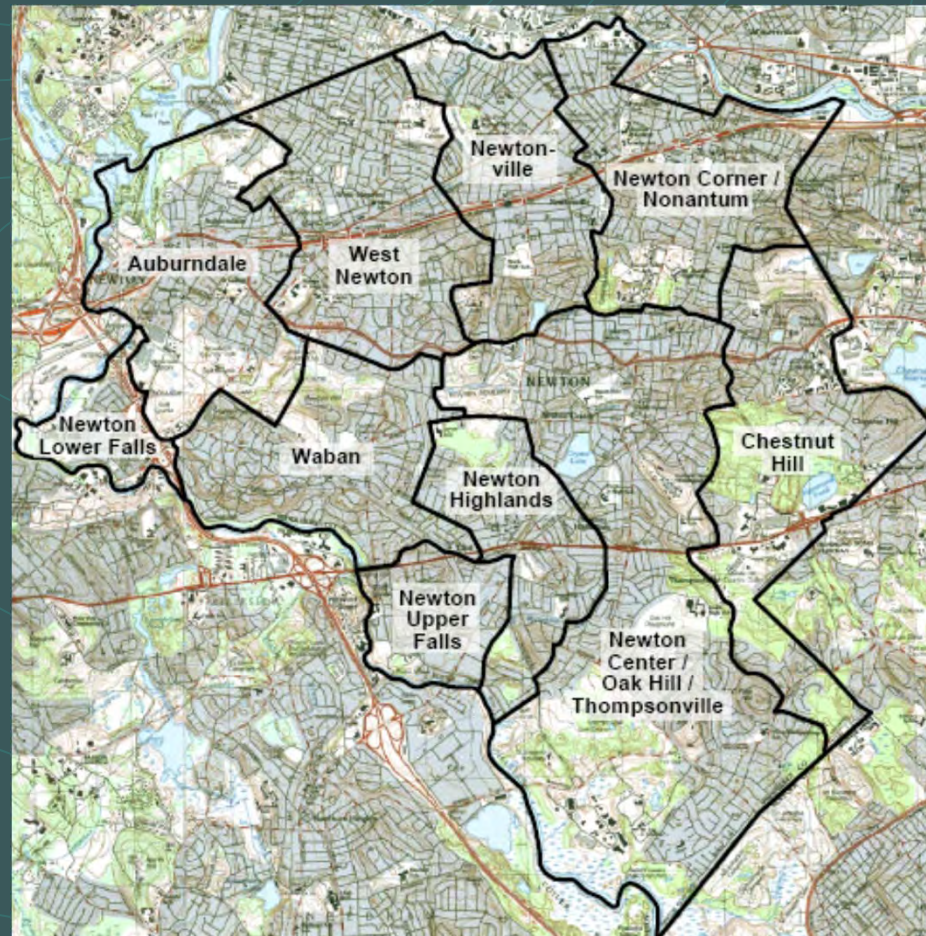
Methods:

- **Planning and Recommendations (Mulholland)**
 - **Other towns protections**
 - **Bylaw/ordinance**



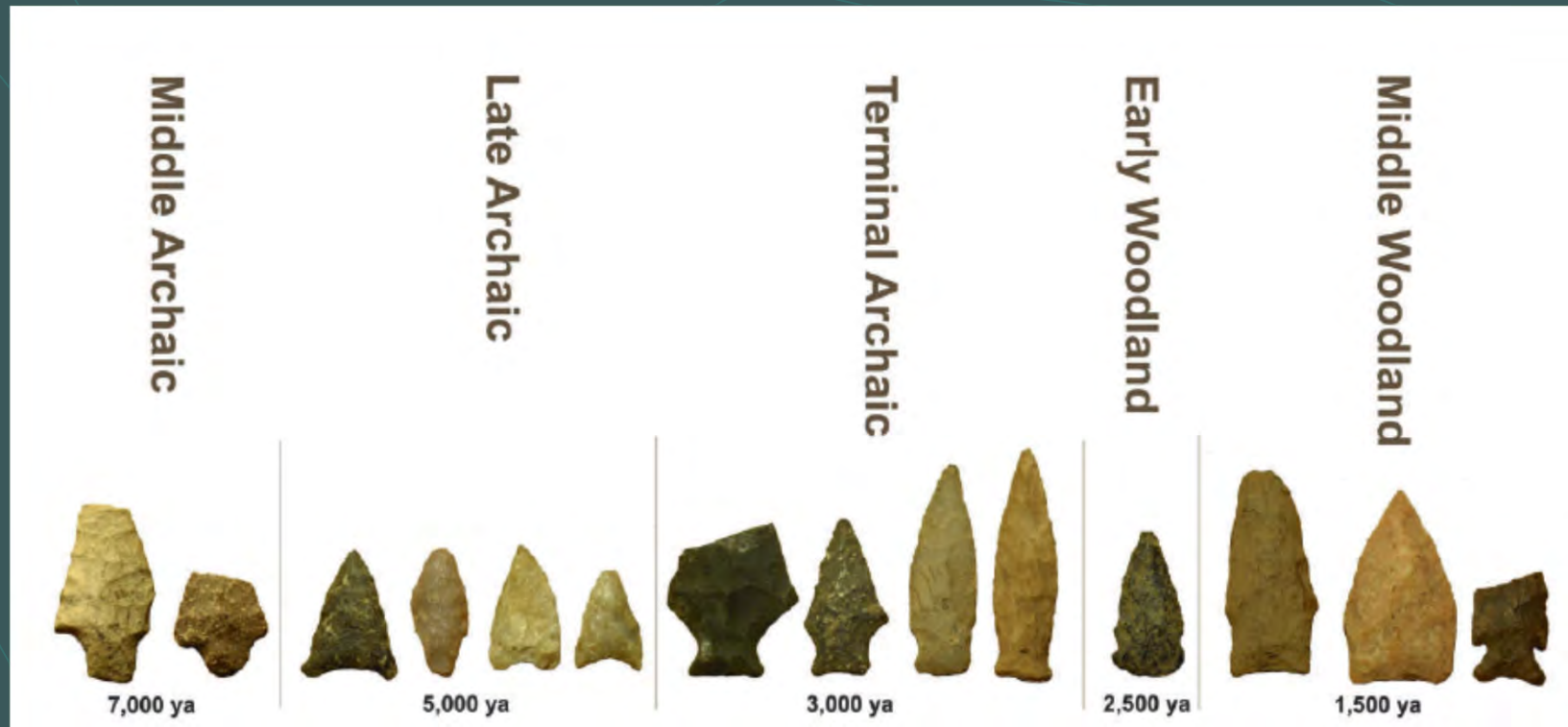
Findings:

- For purposes of discussion, the City was divided up into 10 survey units, based primarily on historic village locations



Findings:

- At start of survey, 13 Native American sites were recorded within the City



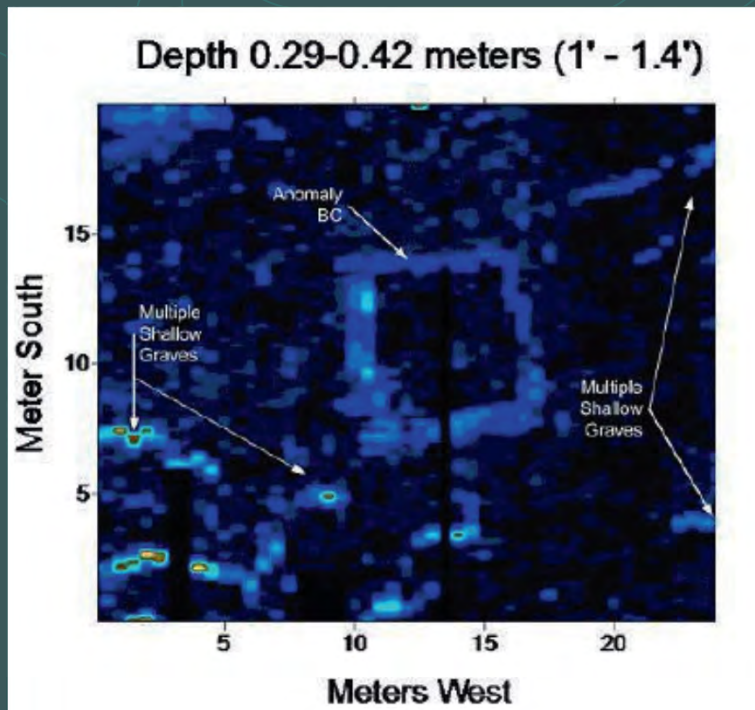
Findings:

- During the survey, 7 additional Native American sites were recorded



Findings:

- At start of survey, 16 Historic period sites were recorded within the City



Findings:

- During the survey, 56 additional Historic period sites were recorded



Findings:

- In total, 13 Native American and 16 Historic period sites were known in Newton prior to the survey, for a total of 29 archaeological sites
- Following the survey, there are now 20 recorded Native American sites, and 72 Historic period sites, for a total of 92 archaeological sites in Newton

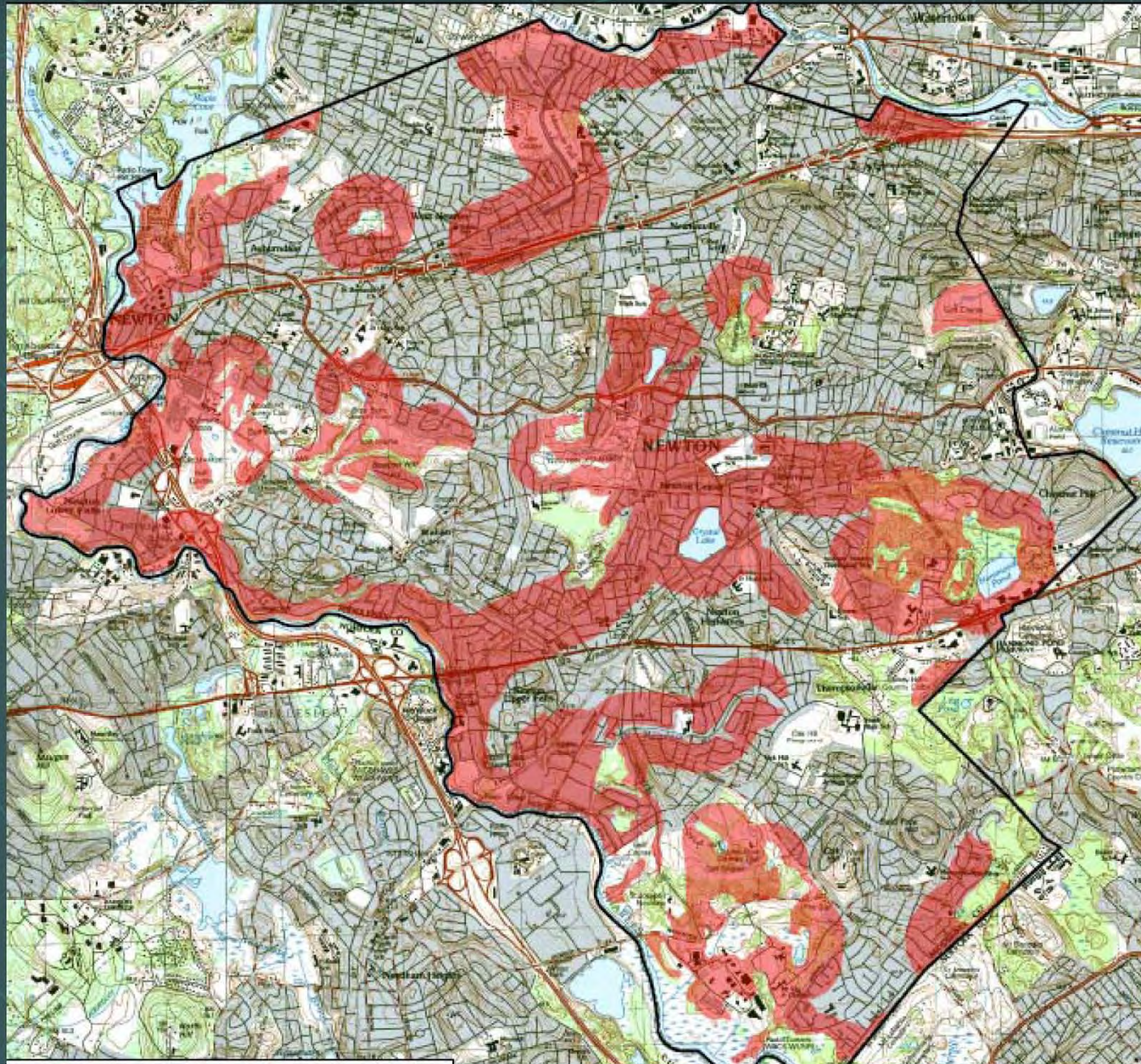


Findings:

- The inventory of archaeological sites in Newton serves as information on site distribution for planning purposes, as well as a historic resource for tourism and other economic possibilities



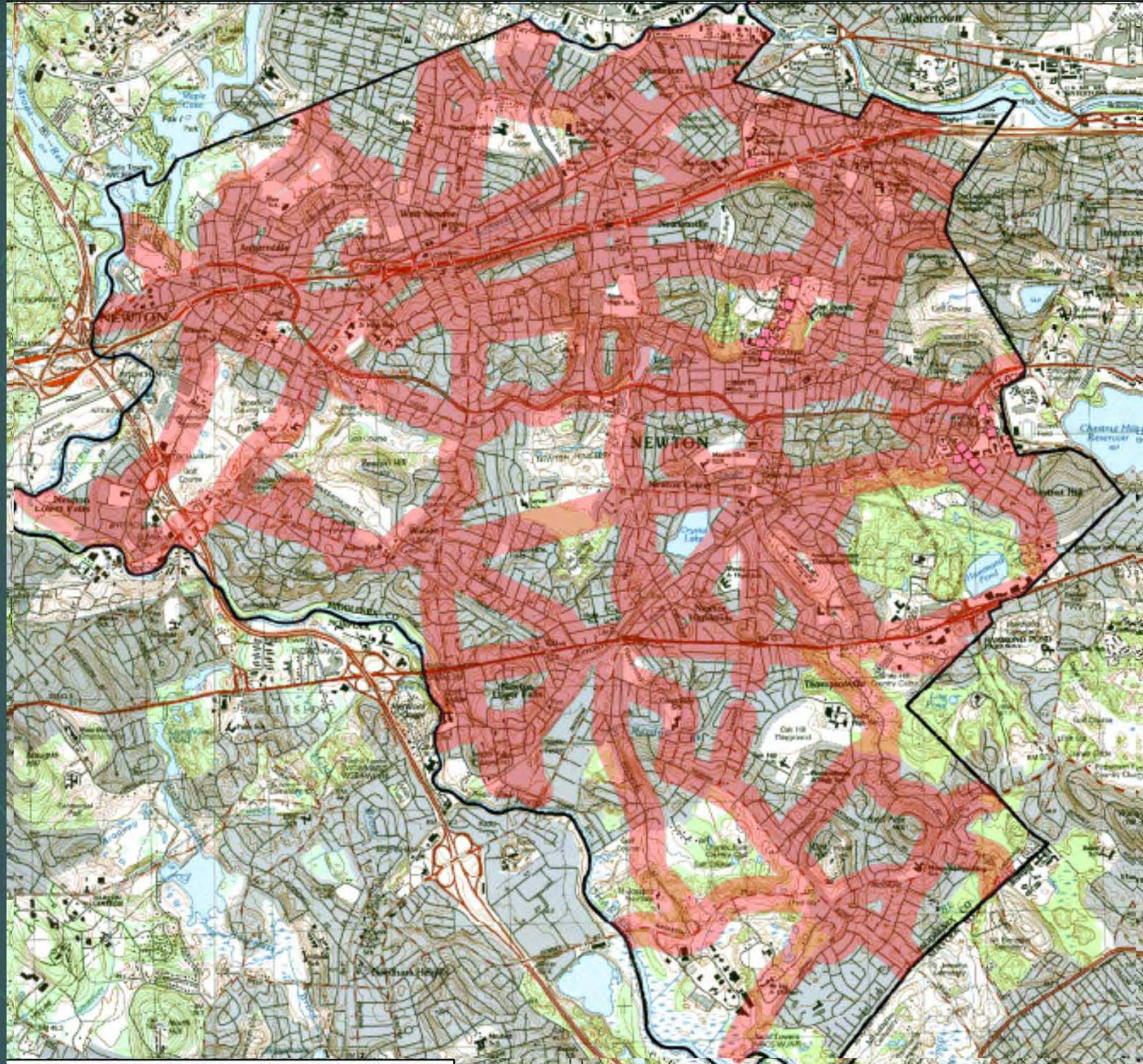
Archaeological Sensitivity: Native American sites



Archaeological Sensitivity: Historic period sites, 1833



Archaeological Sensitivity: Historic period sites, 1856



Planning:

- **Examples of protection of archaeological resources in other communities: Aquinnah, Barnstable, Boston, Brewster, Chilmark, Falmouth, Marion, Medfield, Wayland, West Tisbury, Westborough; as well as the Cape Cod Commission and Martha's Vineyard Commission**



Recommendations:

- Consider city bylaw/ordinance, if supported by the community
- Ideas for signage, educational programs, displays, website inclusion that could promote tourism



Acknowledgements:

- Newton Planning Department, Newton Community Preservation Committee, Newton Historical Commission, Newton Historical Society, Newton Free Library, Massachusetts Historical Commission, among many others
- Please feel free to contact me directly for any additional questions or archaeological information

cdonta@anthro.umass.edu

