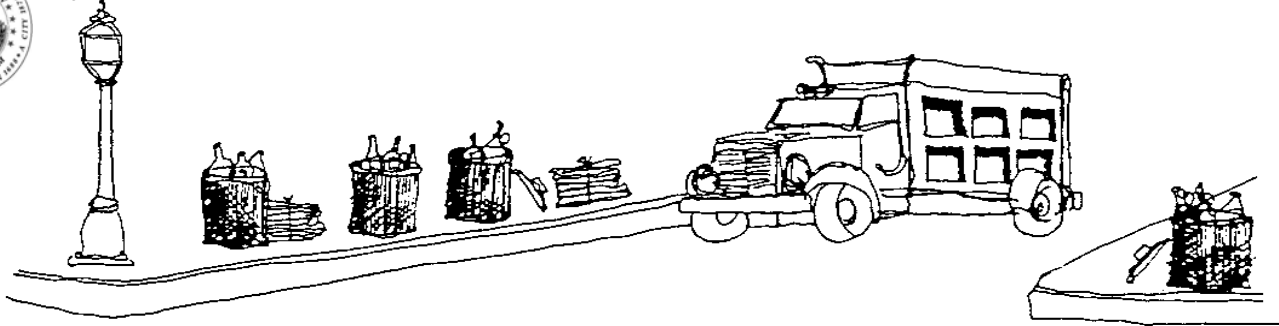




City of Newton Department of Public Works



Trash and Recycling Collection During Construction

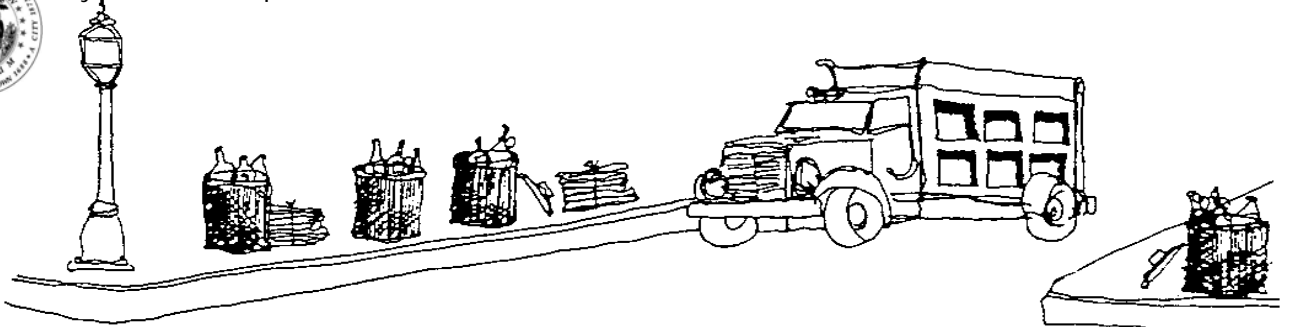
While every effort will be made to minimize interruption to your trash and recycling collections, there may be some delays during construction time.

To decrease the likelihood of a delay, please have your trash/recycling carts out the night before your collection day as Waste Management will attempt to service your street early in the morning prior to the day's construction schedule.

Questions? Please call DPW Customer Service at 617.796.1000 or visit us online www.newtonma.gov



City of Newton Department of Public Works



Trash and Recycling Collection During Construction

While every effort will be made to minimize interruption to your trash and recycling collections, there may be some delays during construction time.

To decrease the likelihood of a delay, please have your trash/recycling carts out the night before your collection day as Waste Management will attempt to service your street early in the morning prior to the day's construction schedule.

Questions? Please call DPW Customer Service at 617.796.1000 or visit us online www.newtonma.gov