



SPECIAL PERMIT DRAWING SET FOR:

THE RESIDENCES AT KESSELER WOODS

Newton, Massachusetts

ISSUED: AUGUST 4, 2014
 REVISED: AUGUST 29, 2014
 OCTOBER 24, 2014



APPLICANT

CHERRY HILL REALTY DEVELOPMENT, LLC
 300 INDEPENDENCE DRIVE
 CHERRY HILL, MA 02447
 617.222.2100

OWNER

ESSELER DEVELOPMENT, LLC
 400 BLUE HILL DRIVE
 WYSTWOOD, MA 02296

LANDSCAPE ARCHITECT AND CIVIL ENGINEER

STANTEC PLANNING AND LANDSCAPE ARCHITECTURE P.C.
 221 CAMBRIDGE STREET
 BOSTON, MA 02114
 617.352.4700

ARCHITECT

WEA ARCHITECTURAL, P.A., INC.
 80 COMMANNERS WAY
 CHELSEA, MA 02110
 617.889.4802

KESSELER WOODS - AREA			
	SEWER LAYOUT	STORM SEWER LAYOUT	WATER LAYOUT
MINIMUM SIZE	12" DIA.	18" DIA.	12" DIA.
CONCRETE MATERIAL	SP	SP + S	SP + S
INSTALLATION DATE	SP	SP + S	SP + S
INSTALLATION METHOD	SP	SP + S	SP + S
INSTALLATION NOTES	SP	SP + S	SP + S
INSTALLATION CONTRACT NUMBER	SP	SP + S	SP + S
INSTALLATION CONTRACT VALUE	SP	SP + S	SP + S
INSTALLATION CONTRACT DATE	SP	SP + S	SP + S
INSTALLATION CONTRACT DESCRIPTION	SP	SP + S	SP + S
INSTALLATION CONTRACT OWNER	SP	SP + S	SP + S
INSTALLATION CONTRACT ADDRESS	SP	SP + S	SP + S
INSTALLATION CONTRACT PHONE	SP	SP + S	SP + S
INSTALLATION CONTRACT FAX	SP	SP + S	SP + S
INSTALLATION CONTRACT E-MAIL	SP	SP + S	SP + S
INSTALLATION CONTRACT WEBSITE	SP	SP + S	SP + S
INSTALLATION CONTRACT OTHER	SP	SP + S	SP + S
INSTALLATION CONTRACT COMMENTS	SP	SP + S	SP + S
INSTALLATION CONTRACT DATE	SP	SP + S	SP + S

DRAWING INDEX

EXISTING CONDITIONS PLAN OF LAND		
L-001	OVERALL SITE PLAN	A1-00 FLOOR PLAN: PARCEL FLOOR PLAN
L-100	LAYOUT AND MATERIALS PLAN	A1-01 FLOOR PLAN: SECOND FLOOR PLAN
L-020	GRADING PLAN	A2-00A FLOOR PLAN: PARCEL PARKING FLOOR PLAN
L-021	BLASTING COMPARISON PLAN	A2-00B FLOOR PLAN: PARCEL PARKING FLOOR PLAN
L-022	BUILDING HEIGHT CALCULATION PLAN	A2-01A FLOOR PLAN: PARCEL FIRST FLOOR PLAN
L-300	UTILITY PLAN	A2-01B FLOOR PLAN: PARCEL SECOND FLOOR PLAN
L-301	UTILITY PROFILES	A2-02A FLOOR PLAN: PARCEL SECOND FLOOR PLAN
L-400	PLANTING PLAN	A2-02B FLOOR PLAN: PARCEL THIRD FLOOR PLAN
L-401	TREE REMOVAL PLAN	A2-02C FLOOR PLAN: PARCEL THIRD FLOOR PLAN
L-800	SET FIDUCIARY PLAN	A4-00 BUILDINGS ELEVATIONS
L-800	SET FIDUCIARY PLAN	A4-01 BUILDINGS ELEVATIONS
L-700	SEE DETAILS 1	A4-02 BUILDINGS SECTIONS
L-701	SEE DETAILS 2	A4-01 BUILDINGS SECTIONS
L-702	SEE DETAILS 3	
L-703	SEE DETAILS 4	
L-704	SEE DETAILS 5	
L-800	SEE SECTIONS 1	
L-801	SEE SECTIONS 2	
L-802	SEE SECTIONS 3	



1000 Massachusetts Avenue, Suite 1000
Boston, MA 02115
Tel: 617.552.8000
Fax: 617.552.8001
www.stantec.com



Chestnut Hill Realty

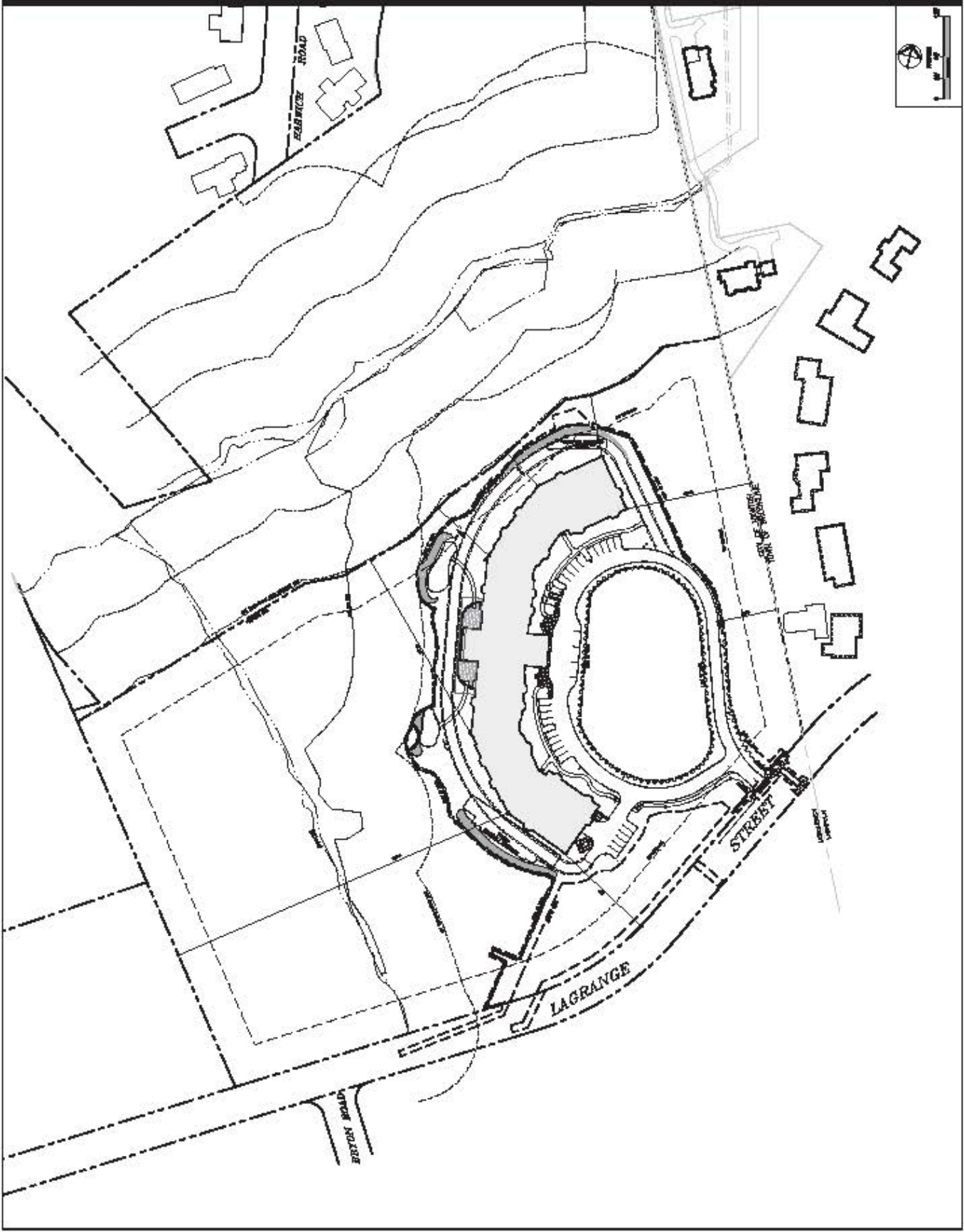
NO.	DESCRIPTION	DATE
1	REVISION	
2	REVISION	
3	REVISION	
4	REVISION	
5	REVISION	
6	REVISION	
7	REVISION	
8	REVISION	
9	REVISION	
10	REVISION	
11	REVISION	
12	REVISION	
13	REVISION	
14	REVISION	
15	REVISION	
16	REVISION	
17	REVISION	
18	REVISION	
19	REVISION	
20	REVISION	
21	REVISION	
22	REVISION	
23	REVISION	
24	REVISION	
25	REVISION	
26	REVISION	
27	REVISION	
28	REVISION	
29	REVISION	
30	REVISION	

Client/Project:
CHESTNUT HILL REALTY
THE RESIDENCES AT
KESSELER WOODS
WINTHROP, MA

Overall Site Plan

Project No.: 0901170
Scale: AS SHOWN

Drawing No.: L-001



NO.	DATE	DESCRIPTION
1	10/15/14	ISSUED FOR PERMIT
2	11/10/14	REVISION
3	12/15/14	REVISION
4	01/15/15	REVISION
5	02/15/15	REVISION
6	03/15/15	REVISION
7	04/15/15	REVISION
8	05/15/15	REVISION
9	06/15/15	REVISION
10	07/15/15	REVISION
11	08/15/15	REVISION
12	09/15/15	REVISION
13	10/15/15	REVISION
14	11/15/15	REVISION
15	12/15/15	REVISION
16	01/15/16	REVISION
17	02/15/16	REVISION
18	03/15/16	REVISION
19	04/15/16	REVISION
20	05/15/16	REVISION
21	06/15/16	REVISION
22	07/15/16	REVISION
23	08/15/16	REVISION
24	09/15/16	REVISION
25	10/15/16	REVISION
26	11/15/16	REVISION
27	12/15/16	REVISION
28	01/15/17	REVISION
29	02/15/17	REVISION
30	03/15/17	REVISION
31	04/15/17	REVISION
32	05/15/17	REVISION
33	06/15/17	REVISION
34	07/15/17	REVISION
35	08/15/17	REVISION
36	09/15/17	REVISION
37	10/15/17	REVISION
38	11/15/17	REVISION
39	12/15/17	REVISION
40	01/15/18	REVISION
41	02/15/18	REVISION
42	03/15/18	REVISION
43	04/15/18	REVISION
44	05/15/18	REVISION
45	06/15/18	REVISION
46	07/15/18	REVISION
47	08/15/18	REVISION
48	09/15/18	REVISION
49	10/15/18	REVISION
50	11/15/18	REVISION
51	12/15/18	REVISION
52	01/15/19	REVISION
53	02/15/19	REVISION
54	03/15/19	REVISION
55	04/15/19	REVISION
56	05/15/19	REVISION
57	06/15/19	REVISION
58	07/15/19	REVISION
59	08/15/19	REVISION
60	09/15/19	REVISION
61	10/15/19	REVISION
62	11/15/19	REVISION
63	12/15/19	REVISION
64	01/15/20	REVISION
65	02/15/20	REVISION
66	03/15/20	REVISION
67	04/15/20	REVISION
68	05/15/20	REVISION
69	06/15/20	REVISION
70	07/15/20	REVISION
71	08/15/20	REVISION
72	09/15/20	REVISION
73	10/15/20	REVISION
74	11/15/20	REVISION
75	12/15/20	REVISION
76	01/15/21	REVISION
77	02/15/21	REVISION
78	03/15/21	REVISION
79	04/15/21	REVISION
80	05/15/21	REVISION
81	06/15/21	REVISION
82	07/15/21	REVISION
83	08/15/21	REVISION
84	09/15/21	REVISION
85	10/15/21	REVISION
86	11/15/21	REVISION
87	12/15/21	REVISION
88	01/15/22	REVISION
89	02/15/22	REVISION
90	03/15/22	REVISION
91	04/15/22	REVISION
92	05/15/22	REVISION
93	06/15/22	REVISION
94	07/15/22	REVISION
95	08/15/22	REVISION
96	09/15/22	REVISION
97	10/15/22	REVISION
98	11/15/22	REVISION
99	12/15/22	REVISION
100	01/15/23	REVISION

PROJECT NO. 14-00000000-0000
SHEET NO. 14-00000000-0000

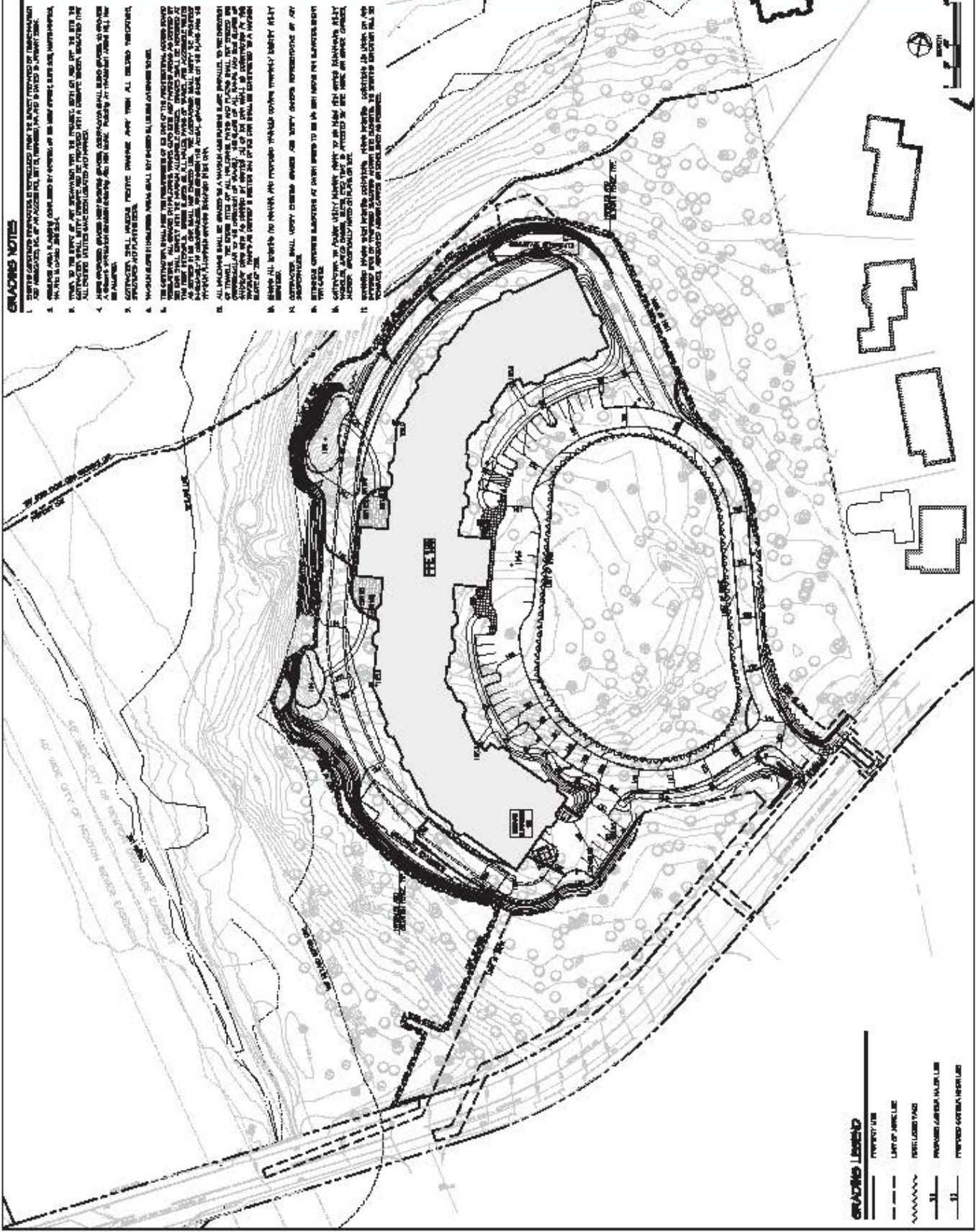
Client/Project
CHESTNUT HILL REALTY
THE RESIDENCES AT
KESSELER WOODS
BETHLEHEM, PA

Grading Plan

Project No. 14-00000000-0000
Sheet No. 14-00000000-0000

GRADING NOTES

1. THE PROPOSED GRADING SHALL BE IN ACCORDANCE WITH THE PROVISIONS OF THE PENNSYLVANIA GRADING ACT, 25 PA.C.S. § 5101, AND THE PROVISIONS OF THE PENNSYLVANIA EROSION CONTROL ACT, 25 PA.C.S. § 5102.
2. GRADING SHALL BE DONE IN ACCORDANCE WITH THE PROVISIONS OF THE PENNSYLVANIA GRADING ACT, 25 PA.C.S. § 5101, AND THE PROVISIONS OF THE PENNSYLVANIA EROSION CONTROL ACT, 25 PA.C.S. § 5102.
3. THE PROPOSED GRADING SHALL BE IN ACCORDANCE WITH THE PROVISIONS OF THE PENNSYLVANIA GRADING ACT, 25 PA.C.S. § 5101, AND THE PROVISIONS OF THE PENNSYLVANIA EROSION CONTROL ACT, 25 PA.C.S. § 5102.
4. ALL EXISTING UTILITIES SHALL BE PROTECTED AND MAINTAINED AT ALL TIMES. ANY UTILITIES THAT ARE DAMAGED OR DISRUPTED SHALL BE REPAIRED TO ORIGINAL OR BETTER CONDITIONS.
5. THE PROPOSED GRADING SHALL BE IN ACCORDANCE WITH THE PROVISIONS OF THE PENNSYLVANIA GRADING ACT, 25 PA.C.S. § 5101, AND THE PROVISIONS OF THE PENNSYLVANIA EROSION CONTROL ACT, 25 PA.C.S. § 5102.
6. THE PROPOSED GRADING SHALL BE IN ACCORDANCE WITH THE PROVISIONS OF THE PENNSYLVANIA GRADING ACT, 25 PA.C.S. § 5101, AND THE PROVISIONS OF THE PENNSYLVANIA EROSION CONTROL ACT, 25 PA.C.S. § 5102.
7. THE PROPOSED GRADING SHALL BE IN ACCORDANCE WITH THE PROVISIONS OF THE PENNSYLVANIA GRADING ACT, 25 PA.C.S. § 5101, AND THE PROVISIONS OF THE PENNSYLVANIA EROSION CONTROL ACT, 25 PA.C.S. § 5102.
8. THE PROPOSED GRADING SHALL BE IN ACCORDANCE WITH THE PROVISIONS OF THE PENNSYLVANIA GRADING ACT, 25 PA.C.S. § 5101, AND THE PROVISIONS OF THE PENNSYLVANIA EROSION CONTROL ACT, 25 PA.C.S. § 5102.
9. THE PROPOSED GRADING SHALL BE IN ACCORDANCE WITH THE PROVISIONS OF THE PENNSYLVANIA GRADING ACT, 25 PA.C.S. § 5101, AND THE PROVISIONS OF THE PENNSYLVANIA EROSION CONTROL ACT, 25 PA.C.S. § 5102.
10. THE PROPOSED GRADING SHALL BE IN ACCORDANCE WITH THE PROVISIONS OF THE PENNSYLVANIA GRADING ACT, 25 PA.C.S. § 5101, AND THE PROVISIONS OF THE PENNSYLVANIA EROSION CONTROL ACT, 25 PA.C.S. § 5102.
11. THE PROPOSED GRADING SHALL BE IN ACCORDANCE WITH THE PROVISIONS OF THE PENNSYLVANIA GRADING ACT, 25 PA.C.S. § 5101, AND THE PROVISIONS OF THE PENNSYLVANIA EROSION CONTROL ACT, 25 PA.C.S. § 5102.
12. THE PROPOSED GRADING SHALL BE IN ACCORDANCE WITH THE PROVISIONS OF THE PENNSYLVANIA GRADING ACT, 25 PA.C.S. § 5101, AND THE PROVISIONS OF THE PENNSYLVANIA EROSION CONTROL ACT, 25 PA.C.S. § 5102.
13. THE PROPOSED GRADING SHALL BE IN ACCORDANCE WITH THE PROVISIONS OF THE PENNSYLVANIA GRADING ACT, 25 PA.C.S. § 5101, AND THE PROVISIONS OF THE PENNSYLVANIA EROSION CONTROL ACT, 25 PA.C.S. § 5102.
14. THE PROPOSED GRADING SHALL BE IN ACCORDANCE WITH THE PROVISIONS OF THE PENNSYLVANIA GRADING ACT, 25 PA.C.S. § 5101, AND THE PROVISIONS OF THE PENNSYLVANIA EROSION CONTROL ACT, 25 PA.C.S. § 5102.
15. THE PROPOSED GRADING SHALL BE IN ACCORDANCE WITH THE PROVISIONS OF THE PENNSYLVANIA GRADING ACT, 25 PA.C.S. § 5101, AND THE PROVISIONS OF THE PENNSYLVANIA EROSION CONTROL ACT, 25 PA.C.S. § 5102.
16. THE PROPOSED GRADING SHALL BE IN ACCORDANCE WITH THE PROVISIONS OF THE PENNSYLVANIA GRADING ACT, 25 PA.C.S. § 5101, AND THE PROVISIONS OF THE PENNSYLVANIA EROSION CONTROL ACT, 25 PA.C.S. § 5102.
17. THE PROPOSED GRADING SHALL BE IN ACCORDANCE WITH THE PROVISIONS OF THE PENNSYLVANIA GRADING ACT, 25 PA.C.S. § 5101, AND THE PROVISIONS OF THE PENNSYLVANIA EROSION CONTROL ACT, 25 PA.C.S. § 5102.
18. THE PROPOSED GRADING SHALL BE IN ACCORDANCE WITH THE PROVISIONS OF THE PENNSYLVANIA GRADING ACT, 25 PA.C.S. § 5101, AND THE PROVISIONS OF THE PENNSYLVANIA EROSION CONTROL ACT, 25 PA.C.S. § 5102.
19. THE PROPOSED GRADING SHALL BE IN ACCORDANCE WITH THE PROVISIONS OF THE PENNSYLVANIA GRADING ACT, 25 PA.C.S. § 5101, AND THE PROVISIONS OF THE PENNSYLVANIA EROSION CONTROL ACT, 25 PA.C.S. § 5102.
20. THE PROPOSED GRADING SHALL BE IN ACCORDANCE WITH THE PROVISIONS OF THE PENNSYLVANIA GRADING ACT, 25 PA.C.S. § 5101, AND THE PROVISIONS OF THE PENNSYLVANIA EROSION CONTROL ACT, 25 PA.C.S. § 5102.



Grading Legend

—	PROPERTY LINE
---	LINE OF FINISH GRADE
~~~~~	PROPOSED GRADE
—	PROPOSED CONCRETE RETAINING WALL
—	PROPOSED CONCRETE RETAINING WALL

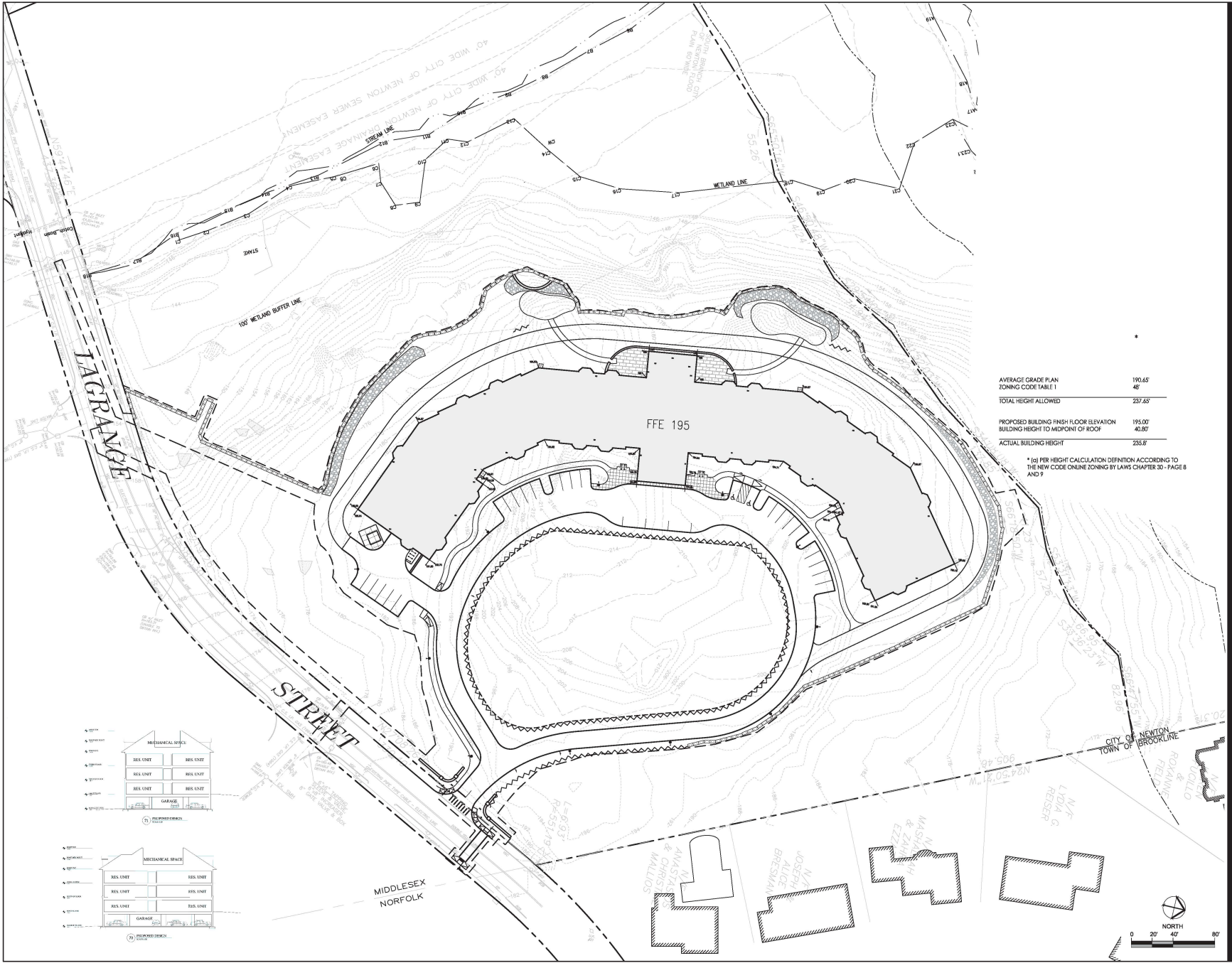
NO.	DATE	BY	DESCRIPTION
1	10/15/10	JL	ISSUED FOR PERMITTING
2	10/15/10	JL	ISSUED FOR PERMITTING
3	10/15/10	JL	ISSUED FOR PERMITTING
4	10/15/10	JL	ISSUED FOR PERMITTING
5	10/15/10	JL	ISSUED FOR PERMITTING
6	10/15/10	JL	ISSUED FOR PERMITTING
7	10/15/10	JL	ISSUED FOR PERMITTING
8	10/15/10	JL	ISSUED FOR PERMITTING
9	10/15/10	JL	ISSUED FOR PERMITTING
10	10/15/10	JL	ISSUED FOR PERMITTING

Client: CHESTNUT HILL REALTY  
 THE RESIDENCES AT  
 KENNER Woods  
 NEWTON, MA  
 Project No. 1000117  
 AS NOTED

Drawing No. L-201



**Copyright Reserved**  
The Contractor shall verify and be responsible for all dimensions. DO NOT scale the drawing - any errors or omissions shall be reported to Stantec without delay.  
The Copyrights to all designs and drawings are the property of Stantec. Reproduction or use for any purpose other than that authorized by Stantec is forbidden.



AVERAGE GRADE PLAN ZONING CODE TABLE 1	190.65
	48'
TOTAL HEIGHT ALLOWED	237.65'
PROPOSED BUILDING FINISH FLOOR ELEVATION	195.00'
BUILDING HEIGHT TO MIDPOINT OF ROOF	40.80'
ACTUAL BUILDING HEIGHT	235.8'

* (H) PER HEIGHT CALCULATION DEFINITION ACCORDING TO THE NEW CODE ONLINE ZONING BY LAWS CHAPTER 30 - PAGE 8 AND 9

VARIOUS EDITS	JM	TRK	11.26.14
VARIOUS EDITS	CL/JM	TRK	08.28.14
SPECIAL PERMIT FILING	CL/JM	TRK	08.24.14
VARIOUS EDITS	CL/JM	TRK	07.14.14
SITE PLAN	JM	TRK	11.26.13
Issued	By	App'd	MM/20.17

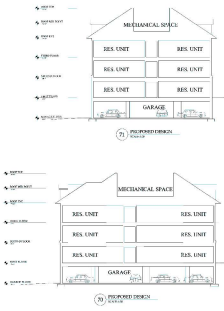
File Name:	JMCL	TX	TX	02.26.14
Drawn:	CHKL	Dgn:		MM/20.17

Permit Seal

Client/Project  
CHESTNUT HILL REALTY  
THE RESIDENCES AT  
KESSELER WOODS  
NEWTON, MA

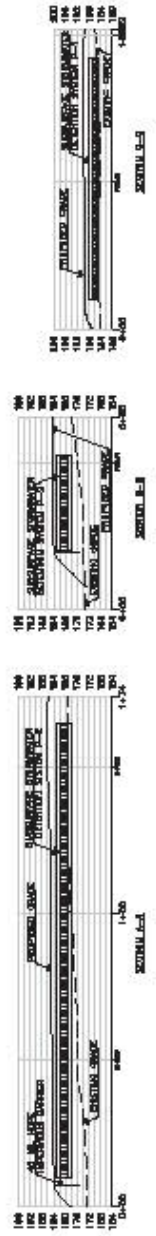
Title  
HEIGHT CALCULATION PLAN

Project No. 210801167 Scale AS NOTED





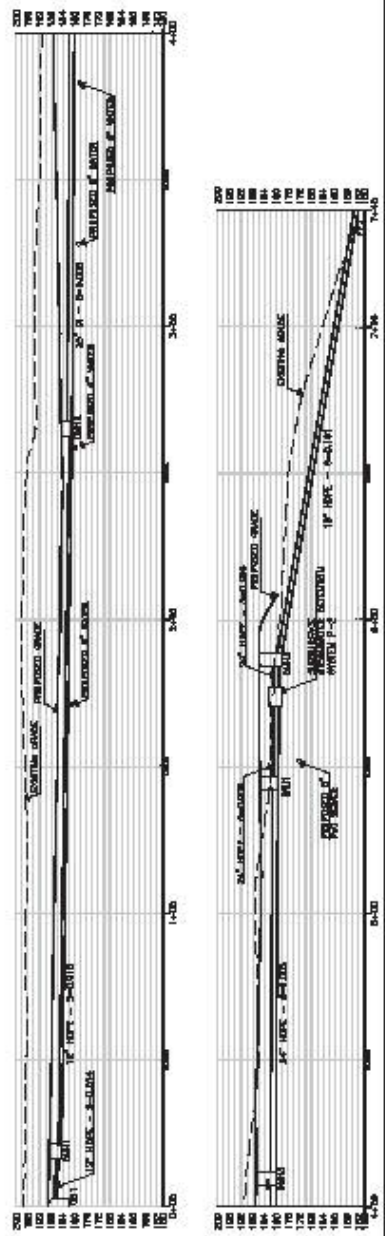
**1** SUBSURFACE BROWNFATER DETENTION SYSTEM SECTIONS  
 SCALE: 1"=10'



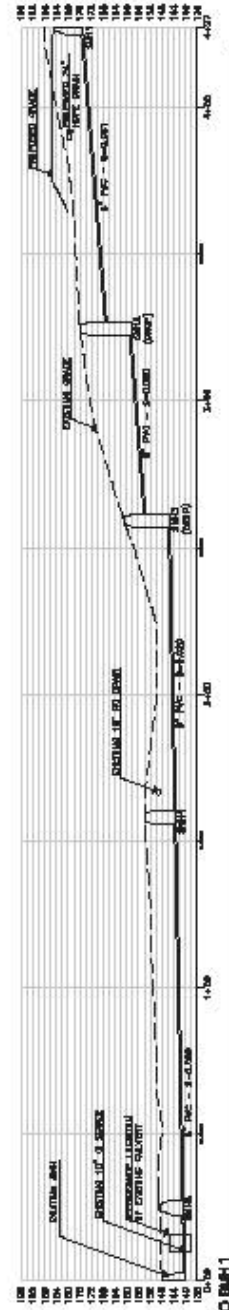
**2** CBM TO PEZ  
 SCALE: 1"=10'



**3** CBM TO PEZ  
 SCALE: 1"=10'



**4** EXISTING BWH TO BWH1  
 SCALE: 1"=10'



NO.	DATE	BY	CHKD.	APP.
1	01/11/17	JLW	ML	
2	01/11/17	JLW	ML	
3	01/11/17	JLW	ML	
4	01/11/17	JLW	ML	
5	01/11/17	JLW	ML	
6	01/11/17	JLW	ML	
7	01/11/17	JLW	ML	
8	01/11/17	JLW	ML	
9	01/11/17	JLW	ML	
10	01/11/17	JLW	ML	
11	01/11/17	JLW	ML	
12	01/11/17	JLW	ML	
13	01/11/17	JLW	ML	
14	01/11/17	JLW	ML	
15	01/11/17	JLW	ML	
16	01/11/17	JLW	ML	
17	01/11/17	JLW	ML	
18	01/11/17	JLW	ML	
19	01/11/17	JLW	ML	
20	01/11/17	JLW	ML	

Designer: CHESTNUT HILL REALTY  
 THE RESOURCES AT KENNER WOODS  
 NEWTON, MA  
 Project No. 17-001  
 Date: 1/11/17



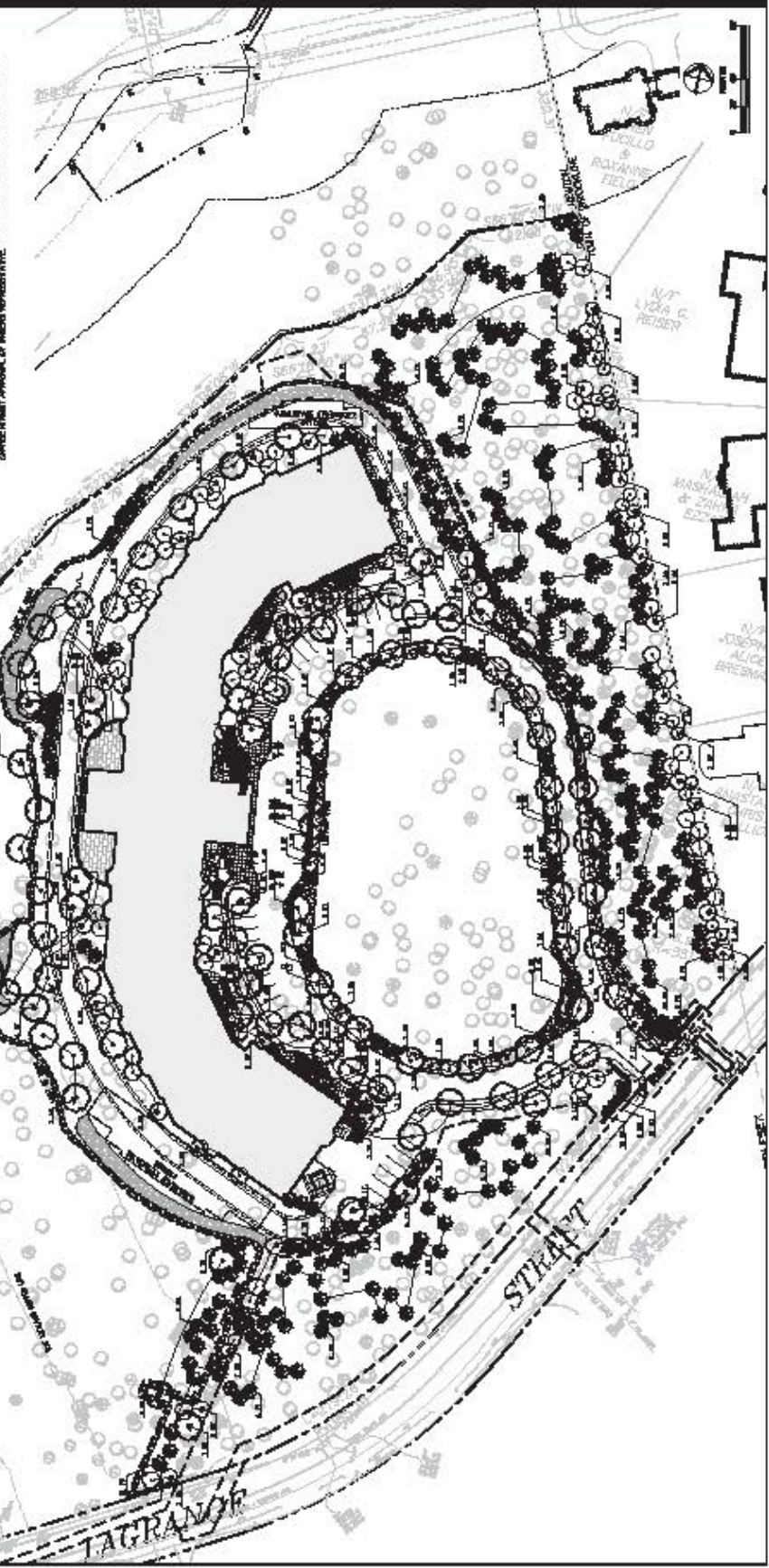
**GENERAL NOTES:**

1. ALL PLANTING SHALL BE INSTALLED WITHIN THE PLANTING ZONE INDICATED BY THE PLANTING PLAN AND SHALL BE MAINTAINED FOR A PERIOD OF 1 YEAR AFTER THE DATE OF COMPLETION OF THE PROJECT.
2. PLANTING SHALL BE INSTALLED IN ACCORDANCE WITH THE PLANTING SCHEDULE AND THE PLANTING PLAN.
3. THE LOCATION OF PLANTING SHALL BE AS SHOWN ON THE PLANTING PLAN. THE PLANTING SHALL BE INSTALLED IN ACCORDANCE WITH THE PLANTING SCHEDULE AND THE PLANTING PLAN.
4. PLANTING SHALL BE INSTALLED IN ACCORDANCE WITH THE PLANTING SCHEDULE AND THE PLANTING PLAN.
5. PLANTING SHALL BE INSTALLED IN ACCORDANCE WITH THE PLANTING SCHEDULE AND THE PLANTING PLAN.
6. PLANTING SHALL BE INSTALLED IN ACCORDANCE WITH THE PLANTING SCHEDULE AND THE PLANTING PLAN.
7. PLANTING SHALL BE INSTALLED IN ACCORDANCE WITH THE PLANTING SCHEDULE AND THE PLANTING PLAN.
8. PLANTING SHALL BE INSTALLED IN ACCORDANCE WITH THE PLANTING SCHEDULE AND THE PLANTING PLAN.
9. PLANTING SHALL BE INSTALLED IN ACCORDANCE WITH THE PLANTING SCHEDULE AND THE PLANTING PLAN.
10. PLANTING SHALL BE INSTALLED IN ACCORDANCE WITH THE PLANTING SCHEDULE AND THE PLANTING PLAN.
11. PLANTING SHALL BE INSTALLED IN ACCORDANCE WITH THE PLANTING SCHEDULE AND THE PLANTING PLAN.
12. PLANTING SHALL BE INSTALLED IN ACCORDANCE WITH THE PLANTING SCHEDULE AND THE PLANTING PLAN.
13. PLANTING SHALL BE INSTALLED IN ACCORDANCE WITH THE PLANTING SCHEDULE AND THE PLANTING PLAN.
14. PLANTING SHALL BE INSTALLED IN ACCORDANCE WITH THE PLANTING SCHEDULE AND THE PLANTING PLAN.
15. PLANTING SHALL BE INSTALLED IN ACCORDANCE WITH THE PLANTING SCHEDULE AND THE PLANTING PLAN.
16. PLANTING SHALL BE INSTALLED IN ACCORDANCE WITH THE PLANTING SCHEDULE AND THE PLANTING PLAN.
17. PLANTING SHALL BE INSTALLED IN ACCORDANCE WITH THE PLANTING SCHEDULE AND THE PLANTING PLAN.
18. PLANTING SHALL BE INSTALLED IN ACCORDANCE WITH THE PLANTING SCHEDULE AND THE PLANTING PLAN.
19. PLANTING SHALL BE INSTALLED IN ACCORDANCE WITH THE PLANTING SCHEDULE AND THE PLANTING PLAN.
20. PLANTING SHALL BE INSTALLED IN ACCORDANCE WITH THE PLANTING SCHEDULE AND THE PLANTING PLAN.

SYMBOL	BRANCH NAME	COMMON NAME	HTY	SIZE	COMMIT
1	...	...	...	...	...
2	...	...	...	...	...
3	...	...	...	...	...
4	...	...	...	...	...
5	...	...	...	...	...
6	...	...	...	...	...
7	...	...	...	...	...
8	...	...	...	...	...
9	...	...	...	...	...
10	...	...	...	...	...
11	...	...	...	...	...
12	...	...	...	...	...
13	...	...	...	...	...
14	...	...	...	...	...
15	...	...	...	...	...
16	...	...	...	...	...
17	...	...	...	...	...
18	...	...	...	...	...
19	...	...	...	...	...
20	...	...	...	...	...

SYMBOL	BRANCH NAME	COMMON NAME	HTY	SIZE	COMMIT
21	...	...	...	...	...
22	...	...	...	...	...
23	...	...	...	...	...
24	...	...	...	...	...
25	...	...	...	...	...
26	...	...	...	...	...
27	...	...	...	...	...
28	...	...	...	...	...
29	...	...	...	...	...
30	...	...	...	...	...

SYMBOL	BRANCH NAME	COMMON NAME	HTY	SIZE	COMMIT
31	...	...	...	...	...
32	...	...	...	...	...
33	...	...	...	...	...
34	...	...	...	...	...
35	...	...	...	...	...
36	...	...	...	...	...
37	...	...	...	...	...
38	...	...	...	...	...
39	...	...	...	...	...
40	...	...	...	...	...
41	...	...	...	...	...
42	...	...	...	...	...
43	...	...	...	...	...
44	...	...	...	...	...
45	...	...	...	...	...
46	...	...	...	...	...
47	...	...	...	...	...
48	...	...	...	...	...
49	...	...	...	...	...
50	...	...	...	...	...

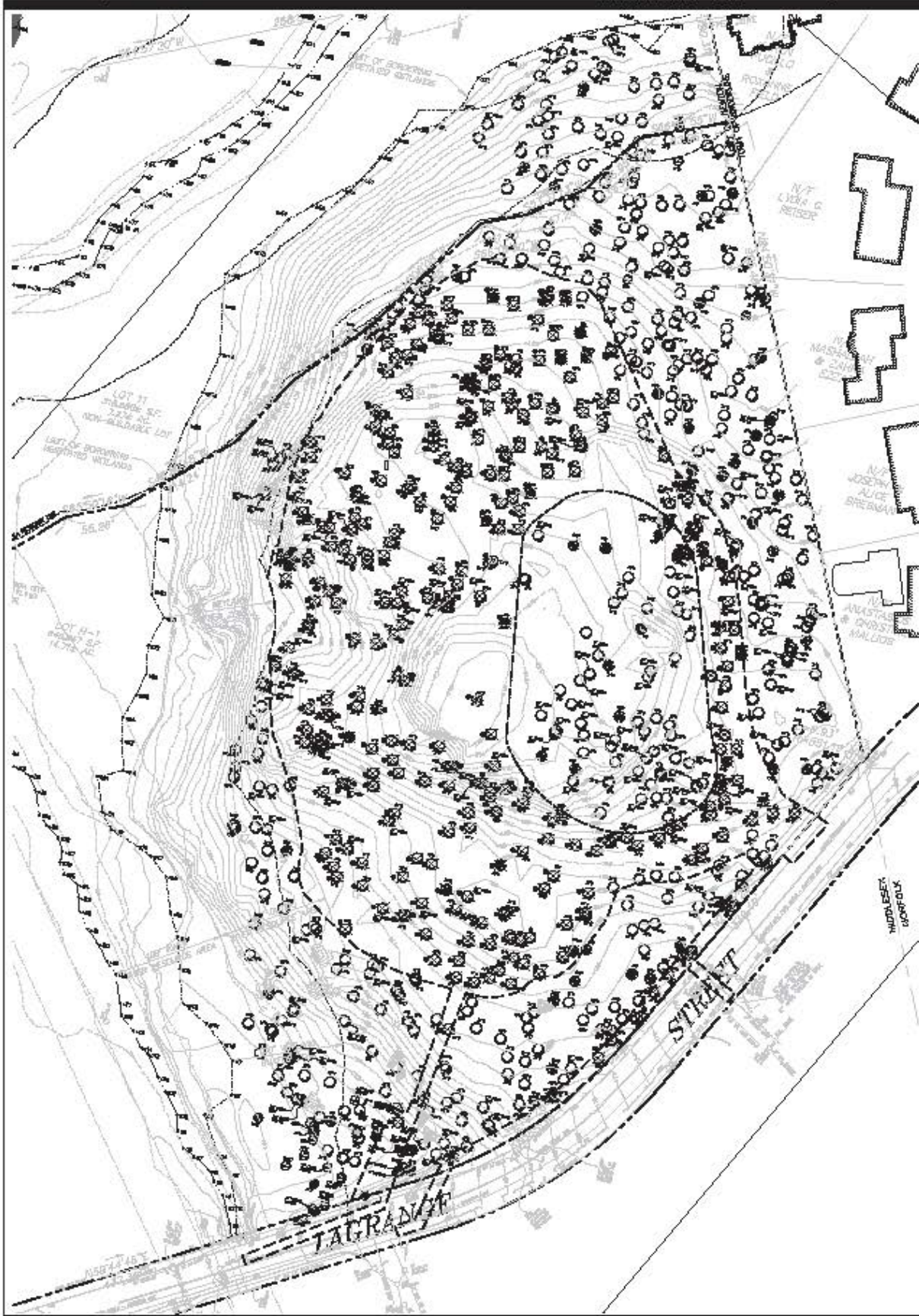


NO.	DATE	BY	DESCRIPTION
1	01/11/17	JL	ISSUED FOR PERMIT
2	01/11/17	JL	ISSUED FOR PERMIT
3	01/11/17	JL	ISSUED FOR PERMIT
4	01/11/17	JL	ISSUED FOR PERMIT
5	01/11/17	JL	ISSUED FOR PERMIT
6	01/11/17	JL	ISSUED FOR PERMIT
7	01/11/17	JL	ISSUED FOR PERMIT
8	01/11/17	JL	ISSUED FOR PERMIT
9	01/11/17	JL	ISSUED FOR PERMIT
10	01/11/17	JL	ISSUED FOR PERMIT

Client: CHESTNUT HILL REALTY  
Project: THE RESIDENCES AT KENNER WOODS  
Address: NEWTON, MA

**TREE REMOVAL PLAN**

Project No. 1700117  
Date: 1-11-17  
Drawing No. P-402  
Drawing No. L-401



TREES TO BE ADDED:

TYPE	TOTAL	1.000.00 CALIPER TREES	600.00 CALIPER TREES
ALL DECIDUOUS	600.00	600.00	0.00
<b>TOTALS</b>	<b>600.00</b>	<b>600.00</b>	<b>0.00</b>

TREES TO BE REMOVED:

TYPE	TOTAL	200.00 CALIPER TREES	1,200.00 CALIPER TREES
ALL DECIDUOUS	1,200.00	1,200.00	0.00
<b>TOTALS</b>	<b>1,200.00</b>	<b>1,200.00</b>	<b>0.00</b>

Legend:

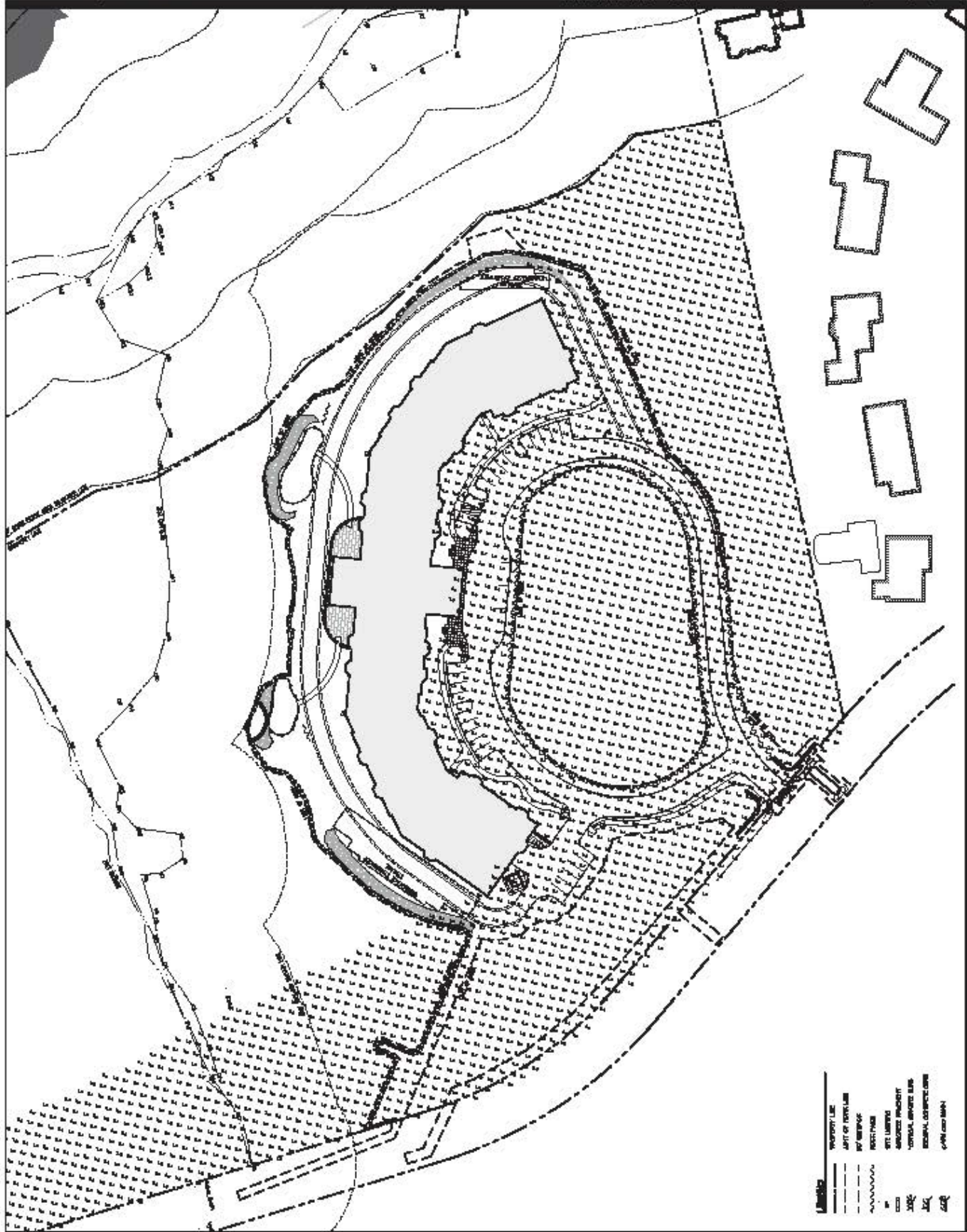
Symbol	Description
(Circle with cross)	Tree to be removed
(Circle with dot)	Tree to be added
(Dashed line)	Lot of trees

NO.	DATE	DESCRIPTION	BY
1	01/15/10	PRELIMINARY	JL
2	02/10/10	REVISED	JL
3	03/10/10	REVISED	JL
4	04/10/10	REVISED	JL
5	05/10/10	REVISED	JL
6	06/10/10	REVISED	JL
7	07/10/10	REVISED	JL
8	08/10/10	REVISED	JL
9	09/10/10	REVISED	JL
10	10/10/10	REVISED	JL
11	11/10/10	REVISED	JL
12	12/10/10	REVISED	JL
13	01/11/11	REVISED	JL
14	02/11/11	REVISED	JL
15	03/11/11	REVISED	JL
16	04/11/11	REVISED	JL
17	05/11/11	REVISED	JL
18	06/11/11	REVISED	JL
19	07/11/11	REVISED	JL
20	08/11/11	REVISED	JL
21	09/11/11	REVISED	JL
22	10/11/11	REVISED	JL
23	11/11/11	REVISED	JL
24	12/11/11	REVISED	JL
25	01/12/12	REVISED	JL
26	02/12/12	REVISED	JL
27	03/12/12	REVISED	JL
28	04/12/12	REVISED	JL
29	05/12/12	REVISED	JL
30	06/12/12	REVISED	JL
31	07/12/12	REVISED	JL
32	08/12/12	REVISED	JL
33	09/12/12	REVISED	JL
34	10/12/12	REVISED	JL
35	11/12/12	REVISED	JL
36	12/12/12	REVISED	JL
37	01/13/13	REVISED	JL
38	02/13/13	REVISED	JL
39	03/13/13	REVISED	JL
40	04/13/13	REVISED	JL
41	05/13/13	REVISED	JL
42	06/13/13	REVISED	JL
43	07/13/13	REVISED	JL
44	08/13/13	REVISED	JL
45	09/13/13	REVISED	JL
46	10/13/13	REVISED	JL
47	11/13/13	REVISED	JL
48	12/13/13	REVISED	JL
49	01/14/14	REVISED	JL
50	02/14/14	REVISED	JL
51	03/14/14	REVISED	JL
52	04/14/14	REVISED	JL
53	05/14/14	REVISED	JL
54	06/14/14	REVISED	JL
55	07/14/14	REVISED	JL
56	08/14/14	REVISED	JL
57	09/14/14	REVISED	JL
58	10/14/14	REVISED	JL
59	11/14/14	REVISED	JL
60	12/14/14	REVISED	JL
61	01/15/15	REVISED	JL
62	02/15/15	REVISED	JL
63	03/15/15	REVISED	JL
64	04/15/15	REVISED	JL
65	05/15/15	REVISED	JL
66	06/15/15	REVISED	JL
67	07/15/15	REVISED	JL
68	08/15/15	REVISED	JL
69	09/15/15	REVISED	JL
70	10/15/15	REVISED	JL
71	11/15/15	REVISED	JL
72	12/15/15	REVISED	JL
73	01/16/16	REVISED	JL
74	02/16/16	REVISED	JL
75	03/16/16	REVISED	JL
76	04/16/16	REVISED	JL
77	05/16/16	REVISED	JL
78	06/16/16	REVISED	JL
79	07/16/16	REVISED	JL
80	08/16/16	REVISED	JL
81	09/16/16	REVISED	JL
82	10/16/16	REVISED	JL
83	11/16/16	REVISED	JL
84	12/16/16	REVISED	JL
85	01/17/17	REVISED	JL
86	02/17/17	REVISED	JL
87	03/17/17	REVISED	JL
88	04/17/17	REVISED	JL
89	05/17/17	REVISED	JL
90	06/17/17	REVISED	JL
91	07/17/17	REVISED	JL
92	08/17/17	REVISED	JL
93	09/17/17	REVISED	JL
94	10/17/17	REVISED	JL
95	11/17/17	REVISED	JL
96	12/17/17	REVISED	JL
97	01/18/18	REVISED	JL
98	02/18/18	REVISED	JL
99	03/18/18	REVISED	JL
100	04/18/18	REVISED	JL

Client: CHESTNUT HILL REALTY  
Project: THE RESIDENCES AT KENNER Woods  
Address: BOSTON, MA

**PHOTOMETRICS PLAN**

Project No. 11181117  
Date: 04/18/2018



**Legend**

--- (dashed line)	PROPERTY LINE
--- (solid line)	SETBACK OF EXISTING
--- (dotted line)	SETBACK OF PROPOSED
--- (dash-dot line)	RESTRICTION
--- (wavy line)	WATER
--- (dotted line)	WETLANDS
--- (stippled area)	PROPOSED FOOTPRINT
--- (solid line)	EXISTING FOOTPRINT
--- (dashed line)	SEWER/STORMWATER
--- (dotted line)	EXISTING DRIVE
--- (dashed line)	PROPOSED DRIVE

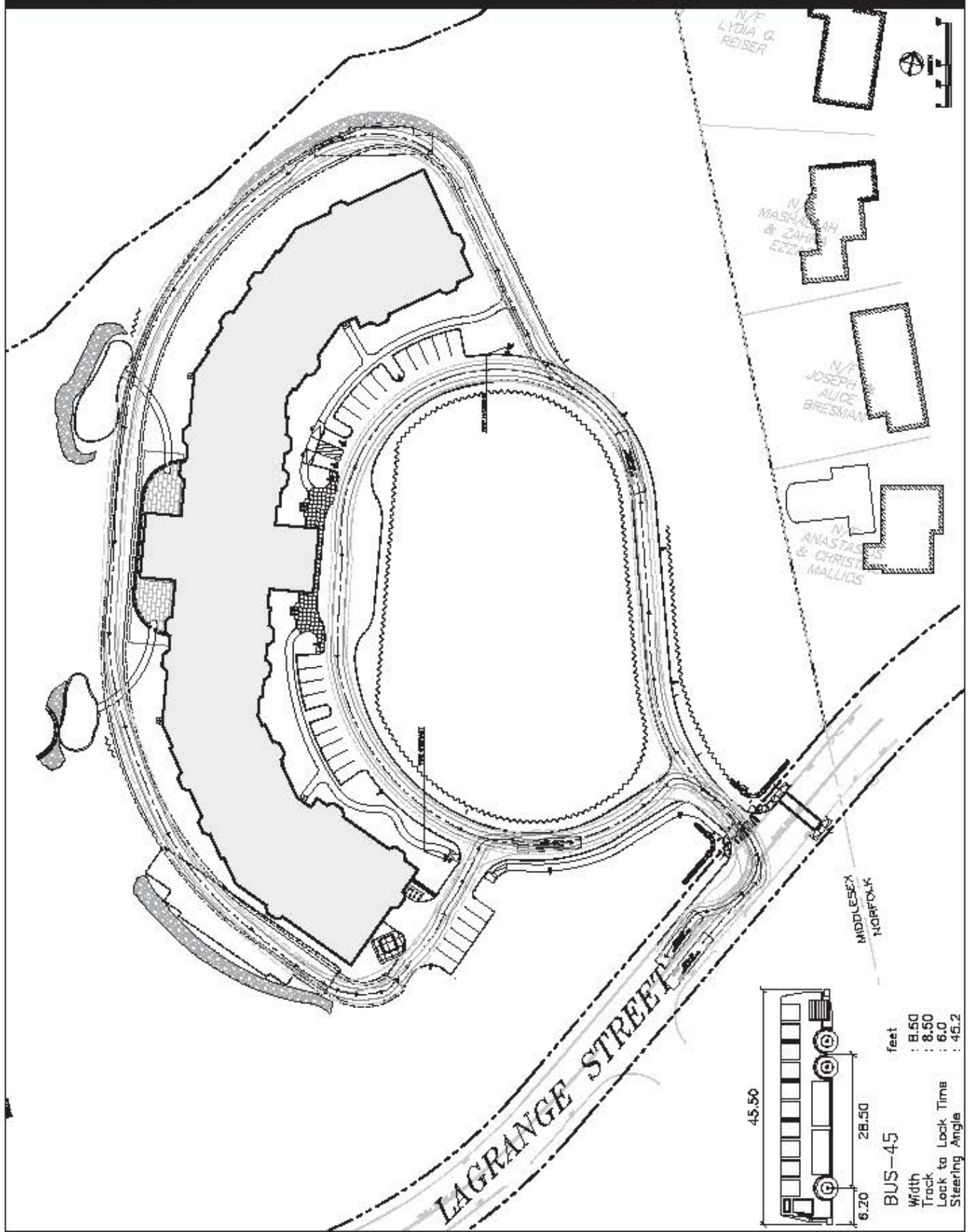
NO. OF STORIES	1
NO. OF UNITS	1
NO. OF PARKING SPACES	1
NO. OF ELEVATORS	1
NO. OF ESCALATORS	1
NO. OF STAIRS	1
NO. OF RAMP	1
NO. OF MECH. ROOMS	1
NO. OF STORAGE ROOMS	1
NO. OF LOBBY	1
NO. OF OFFICE	1
NO. OF RESIDENTIAL	1
NO. OF COMMERCIAL	1
NO. OF INDUSTRIAL	1
NO. OF OTHER	1
TOTAL	1

Client/Project  
CHESTNUT HILL REALTY  
THE RESIDENCES AT  
KESELER WOODS  
NORTON, MA

Project No.  
10001710

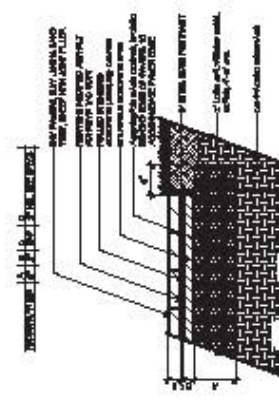
Scale  
1/8" = 1'-0"

Drawing No.  
L-600

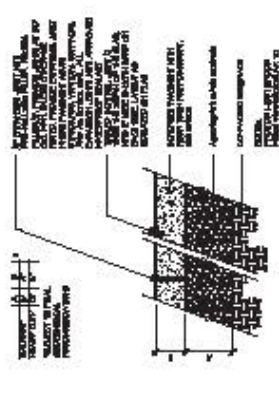




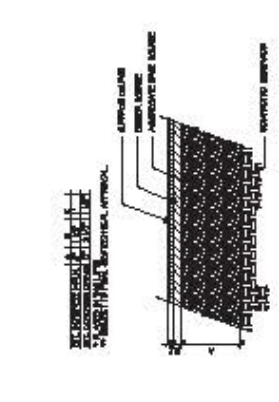
**1 BITUMINOUS CONCRETE PAVEMENT**  
SCALE: 1" = 1'-0"



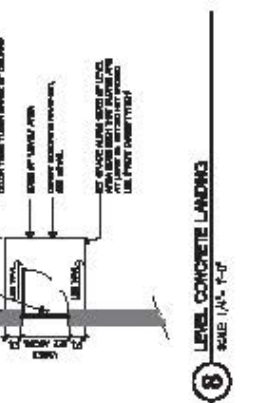
**2 CONCRETE PAVEMENT**  
SCALE: 1/2" = 1'-0"



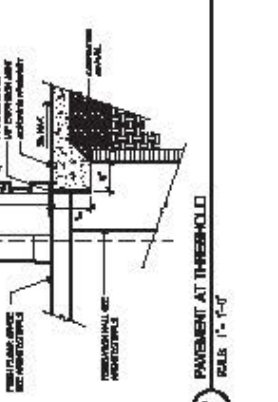
**3 UNIT PAVERS**  
SCALE: 1" = 1'-0"



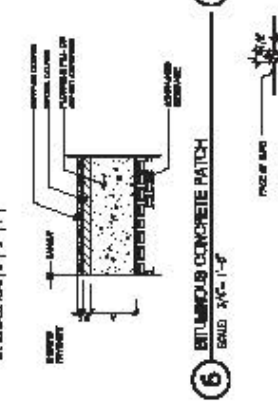
**4 CURBS**  
SCALE: 1/2" = 1'-0"



**5 CURBS**  
SCALE: 1/2" = 1'-0"



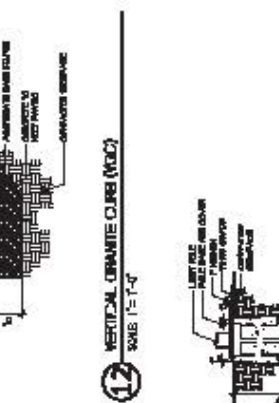
**6 BITUMINOUS CONCRETE MATCH**  
SCALE: 3/4" = 1'-0"



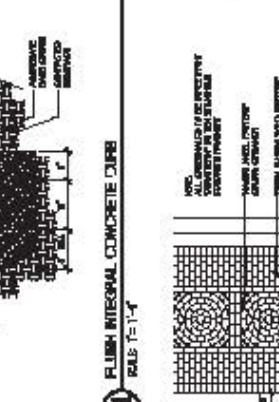
**7 PAVEMENT AT THRESHOLD**  
SCALE: 1" = 1'-0"



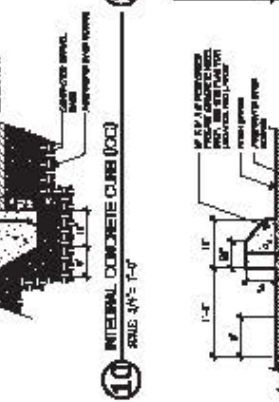
**8 LEVEL CONCRETE LANDINGS**  
SCALE: 1/2" = 1'-0"



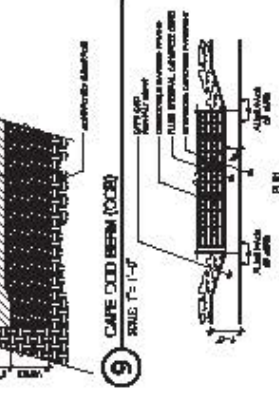
**9 CURB OVER BEAM (CURB)**  
SCALE: 1" = 1'-0"



**10 INTERNAL CONCRETE CURB (ICC)**  
SCALE: 3/4" = 1'-0"



**11 FLUSH INTEGRAL CONCRETE CURB**  
SCALE: 1" = 1'-0"



**12 VERTICAL CONCRETE CURB (VCC)**  
SCALE: 1" = 1'-0"



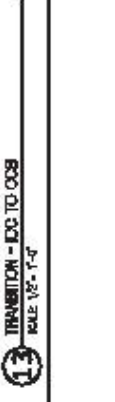
**13 TRANSITION - ICC TO CURB**  
SCALE: 1/2" = 1'-0"



**14 PRECAST CONCRETE WHEEL STOP**  
SCALE: 1" = 1'-0"



**15 CURBSIDE CROSSWALK**  
SCALE: N/A

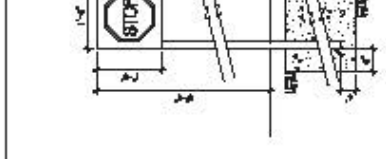


**16 PRECAST CONCRETE LIGHT POLE BASE**  
SCALE: 1/2" = 1'-0"

NO.	DESCRIPTION	DATE
1	ISSUED FOR PERMIT	08/15/11
2	ISSUED FOR PERMIT	08/15/11
3	ISSUED FOR PERMIT	08/15/11
4	ISSUED FOR PERMIT	08/15/11
5	ISSUED FOR PERMIT	08/15/11
6	ISSUED FOR PERMIT	08/15/11
7	ISSUED FOR PERMIT	08/15/11
8	ISSUED FOR PERMIT	08/15/11
9	ISSUED FOR PERMIT	08/15/11
10	ISSUED FOR PERMIT	08/15/11
11	ISSUED FOR PERMIT	08/15/11
12	ISSUED FOR PERMIT	08/15/11
13	ISSUED FOR PERMIT	08/15/11
14	ISSUED FOR PERMIT	08/15/11
15	ISSUED FOR PERMIT	08/15/11
16	ISSUED FOR PERMIT	08/15/11



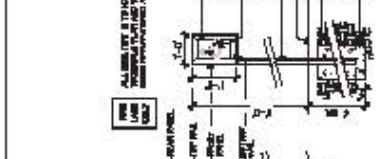
**1** HANDICAP STRIPPER  
SMBD 1/8" x 1'-4"



**3** HANDICAP PARKING SIGNAGE  
SMBD 1/2" x 7'-0"



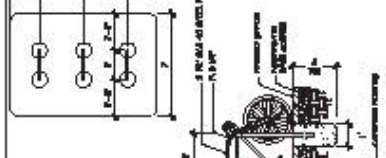
**4** STOP SIGN  
SMBD 1/2" x 7'-0"



**8** EVERGREEN TREE PLANTING  
SMBD 1/2" x 1'-4"



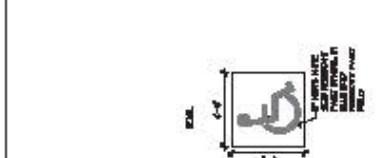
**7** DECIDUOUS TREE PLANTING  
SMBD 1/2" x 7'-0"



**6** FERN AND GROUNDCOVER PLANTING  
SMBD 1/2" x 1'-0"



**10** TREE WELL AT EXISTING TRENCH  
SMBD 1/2" x 7'-0"



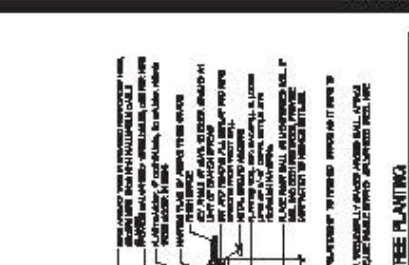
**9** LAWN  
SMBD 1/2" x 1'-0"



**11** ENTRY SIGN  
SMBD 1/2" x 1'-0"



**3** HANDICAP PARKING SIGNAGE  
SMBD 1/2" x 7'-0"



**4** STOP SIGN  
SMBD 1/2" x 7'-0"



**8** EVERGREEN TREE PLANTING  
SMBD 1/2" x 1'-4"



**7** DECIDUOUS TREE PLANTING  
SMBD 1/2" x 7'-0"



**6** FERN AND GROUNDCOVER PLANTING  
SMBD 1/2" x 1'-0"



**10** TREE WELL AT EXISTING TRENCH  
SMBD 1/2" x 7'-0"



**9** LAWN  
SMBD 1/2" x 1'-0"



**1** HANDICAP STRIPPER  
SMBD 1/8" x 1'-4"



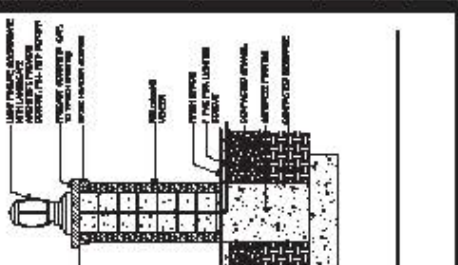
**3** HANDICAP PARKING SIGNAGE  
SMBD 1/2" x 7'-0"



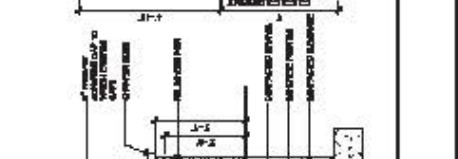
**4** STOP SIGN  
SMBD 1/2" x 7'-0"



**8** EVERGREEN TREE PLANTING  
SMBD 1/2" x 1'-4"



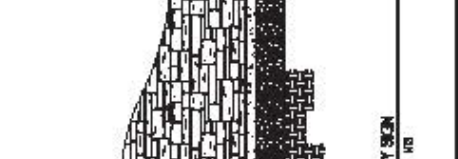
**7** DECIDUOUS TREE PLANTING  
SMBD 1/2" x 7'-0"



**6** FERN AND GROUNDCOVER PLANTING  
SMBD 1/2" x 1'-0"



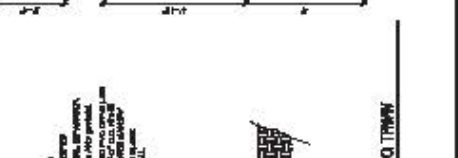
**10** TREE WELL AT EXISTING TRENCH  
SMBD 1/2" x 7'-0"



**9** LAWN  
SMBD 1/2" x 1'-0"



**1** HANDICAP STRIPPER  
SMBD 1/8" x 1'-4"



**3** HANDICAP PARKING SIGNAGE  
SMBD 1/2" x 7'-0"



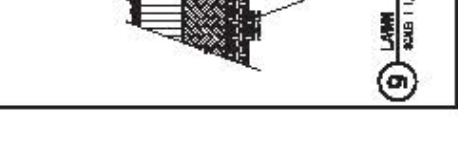
**4** STOP SIGN  
SMBD 1/2" x 7'-0"



**8** EVERGREEN TREE PLANTING  
SMBD 1/2" x 1'-4"



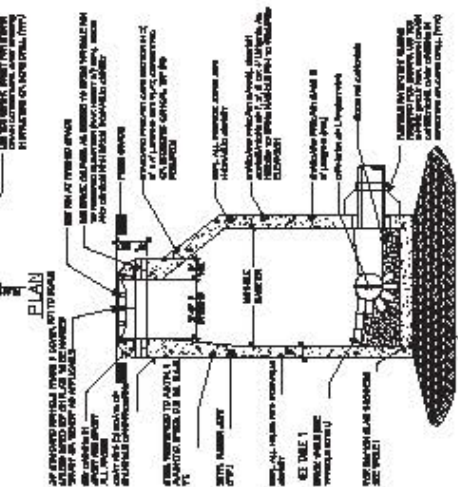
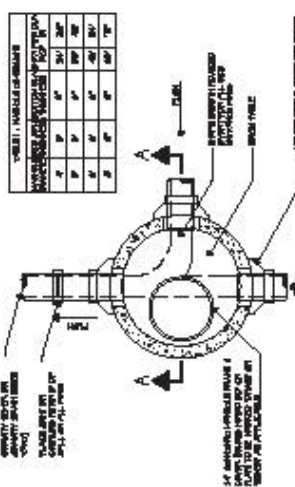
**7** DECIDUOUS TREE PLANTING  
SMBD 1/2" x 7'-0"



**6** FERN AND GROUNDCOVER PLANTING  
SMBD 1/2" x 1'-0"

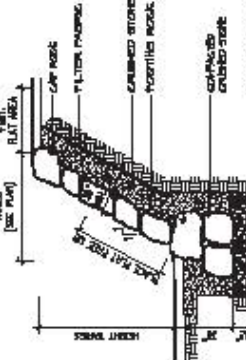
NO.	DESCRIPTION	DATE	BY	CHECKED
1	REVISION			
2	REVISION			
3	REVISION			
4	REVISION			
5	REVISION			
6	REVISION			
7	REVISION			
8	REVISION			
9	REVISION			
10	REVISION			
11	REVISION			

NO.	DESCRIPTION	DATE	BY	CHKD.
1	ISSUE FOR PERMITS	08/11/10	MM	MM
2	ISSUE FOR PERMITS	08/11/10	MM	MM
3	ISSUE FOR PERMITS	08/11/10	MM	MM
4	ISSUE FOR PERMITS	08/11/10	MM	MM
5	ISSUE FOR PERMITS	08/11/10	MM	MM
6	ISSUE FOR PERMITS	08/11/10	MM	MM
7	ISSUE FOR PERMITS	08/11/10	MM	MM
8	ISSUE FOR PERMITS	08/11/10	MM	MM
9	ISSUE FOR PERMITS	08/11/10	MM	MM
10	ISSUE FOR PERMITS	08/11/10	MM	MM



SECTION "A-A"  
 UNFINISHED MODEL

4 DRAIN MANHOLE  
 SCALE: 1/8" = 1'-0"



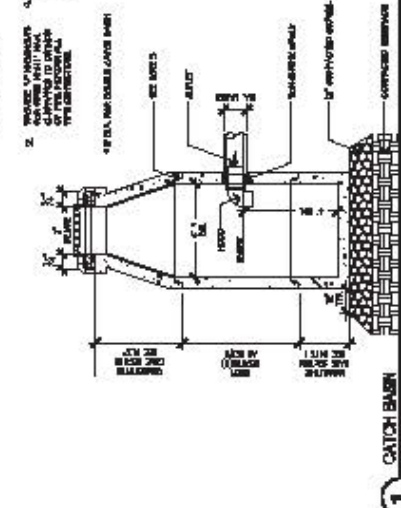
SECTION "B-B"  
 UNFINISHED MODEL

5 RIP RAP WALL  
 SCALE: 1/8" = 1'-0"

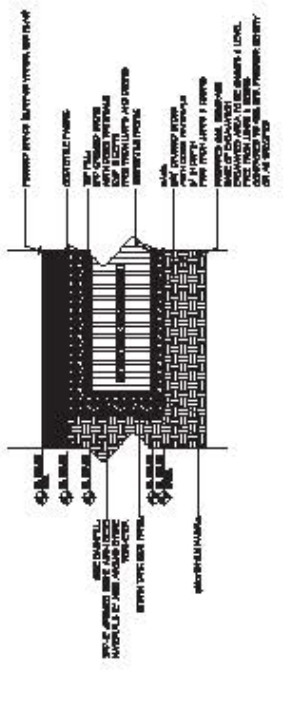
- NOTES:
1. HYDRAULIC DESIGN SHALL BE BASED ON THE DESIGN FLOW RATE AND THE DESIGN HEAD LOSS. THE DESIGN FLOW RATE SHALL BE THE DESIGN FLOW RATE PLUS THE DESIGN HEAD LOSS. THE DESIGN HEAD LOSS SHALL BE THE DESIGN HEAD LOSS PLUS THE DESIGN HEAD LOSS.
  2. THE DESIGN FLOW RATE SHALL BE THE DESIGN FLOW RATE PLUS THE DESIGN HEAD LOSS.
  3. THE DESIGN HEAD LOSS SHALL BE THE DESIGN HEAD LOSS PLUS THE DESIGN HEAD LOSS.
  4. THE DESIGN HEAD LOSS SHALL BE THE DESIGN HEAD LOSS PLUS THE DESIGN HEAD LOSS.
  5. THE DESIGN HEAD LOSS SHALL BE THE DESIGN HEAD LOSS PLUS THE DESIGN HEAD LOSS.

**NOTES:**

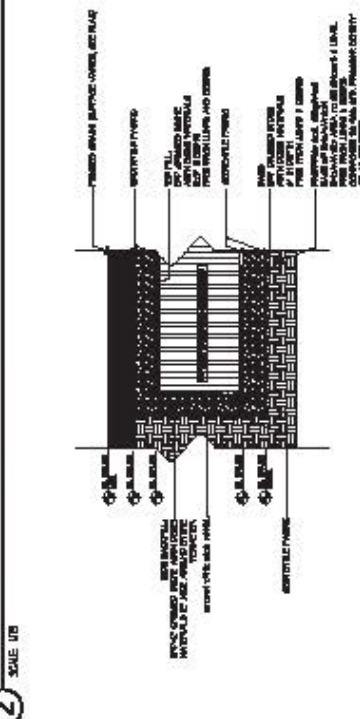
1. ALL MATERIALS SHALL BE AS SHOWN UNLESS OTHERWISE NOTED.
2. THE DESIGN FLOW RATE SHALL BE THE DESIGN FLOW RATE PLUS THE DESIGN HEAD LOSS.
3. THE DESIGN HEAD LOSS SHALL BE THE DESIGN HEAD LOSS PLUS THE DESIGN HEAD LOSS.
4. THE DESIGN HEAD LOSS SHALL BE THE DESIGN HEAD LOSS PLUS THE DESIGN HEAD LOSS.
5. THE DESIGN HEAD LOSS SHALL BE THE DESIGN HEAD LOSS PLUS THE DESIGN HEAD LOSS.



1 CATCH BASIN  
 SCALE: 1/8" = 1'-0"



2 SUBSURFACE STORMWATER DETENTION SYSTEM P-1  
 SCALE: 1/8" = 1'-0"

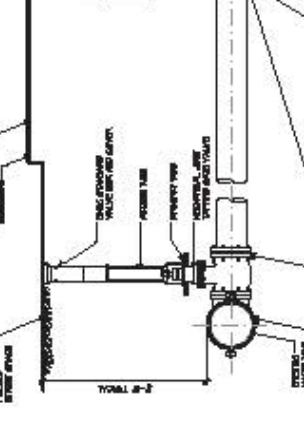
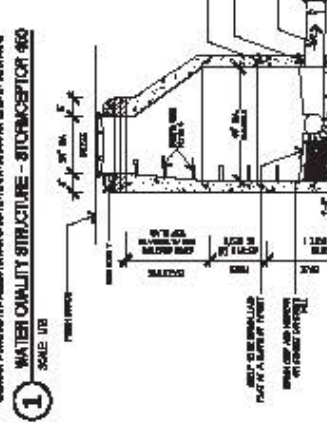
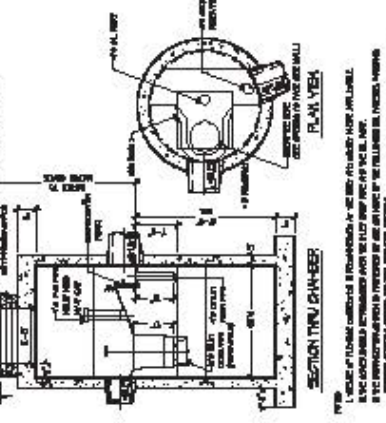
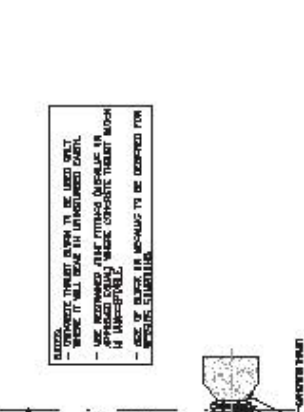
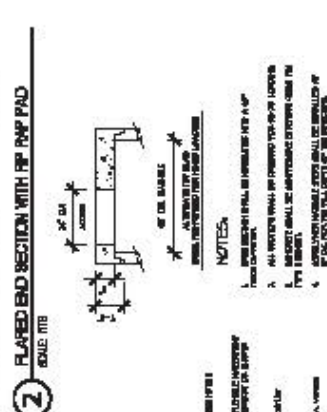
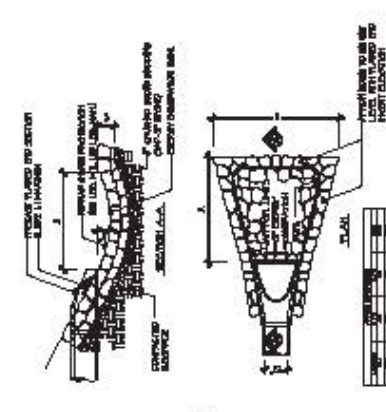
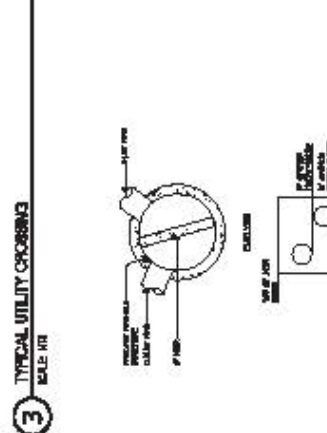
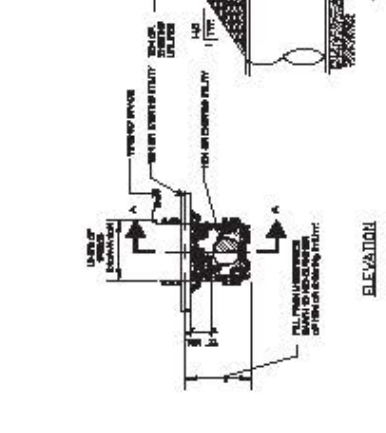
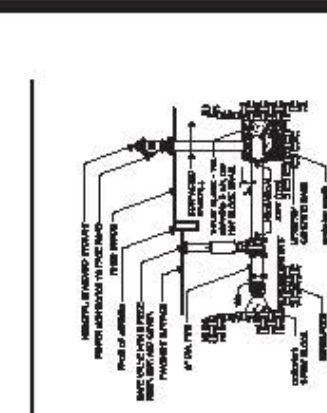
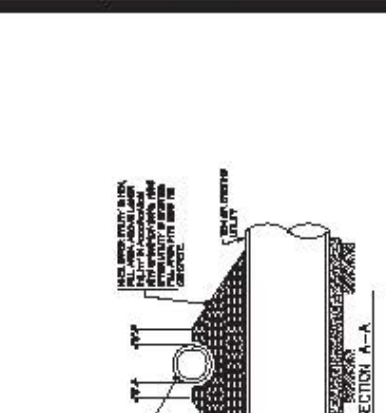


3 SUBSURFACE STORMWATER DETENTION SYSTEM P-2  
 SCALE: 1/8" = 1'-0"

NO. OF SHEETS	10
TOTAL SHEETS	10
NO. OF SHEETS	10
TOTAL SHEETS	10
NO. OF SHEETS	10
TOTAL SHEETS	10
NO. OF SHEETS	10
TOTAL SHEETS	10
NO. OF SHEETS	10
TOTAL SHEETS	10

PROJECT: CHESTNUT HILL REALTY  
 THE RESIDENCES AT KEMER WOODS  
 NORTH, MA  
 SCALE: 1/8" = 1'-0"

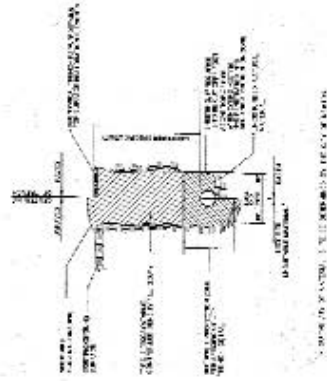
**SITE DETAILS 4**  
 Project No. 11871117  
 Date: 08/20/2018  
 Drawing No. L-703



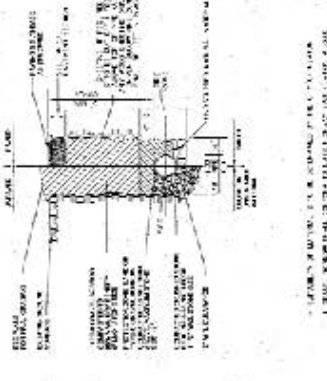
**NOTES**

1. REINFORCING OF RETAINING WALLS SHALL BE DONE PER THE MANUFACTURER'S RECOMMENDATIONS AS SET FORTH IN THE SITE CONDITIONS.

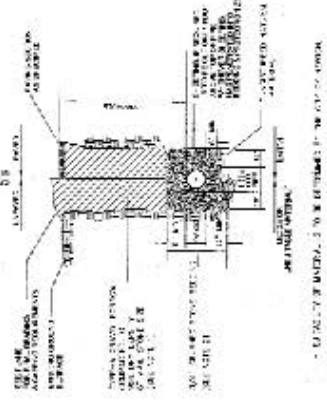




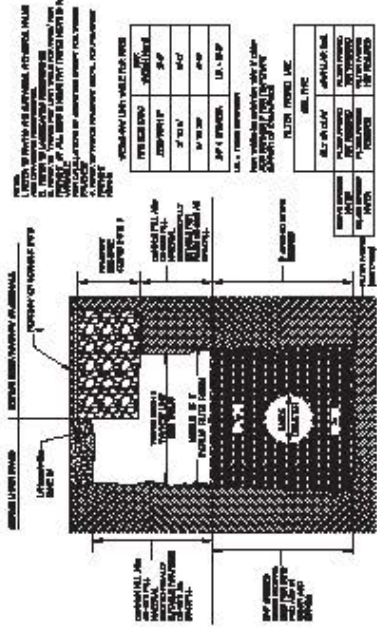
**3** GDE TRENCH  
SCALE: 1/8" = 1'-0"



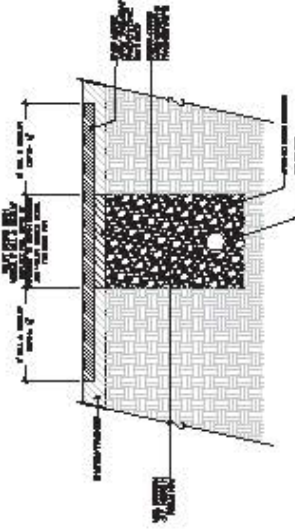
**2** WATER TRENCH  
SCALE: 1/8" = 1'-0"



**1** SEWER TRENCH  
SCALE: 1/8" = 1'-0"

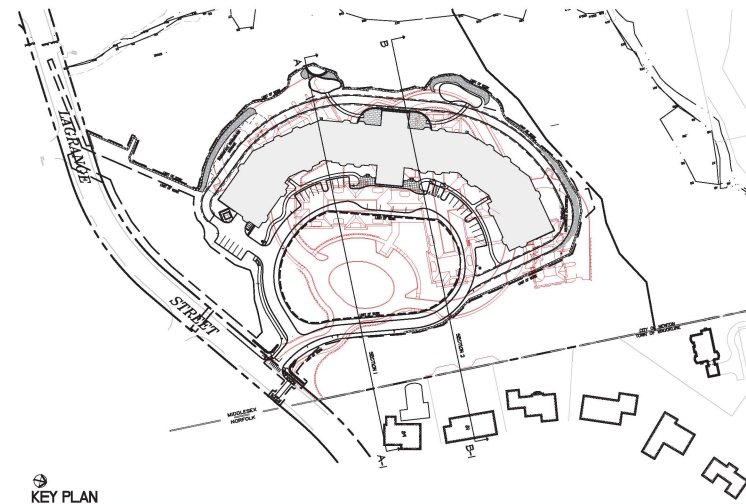


**5** DRAINAGE TRENCH  
SCALE: 1/8" = 1'-0"

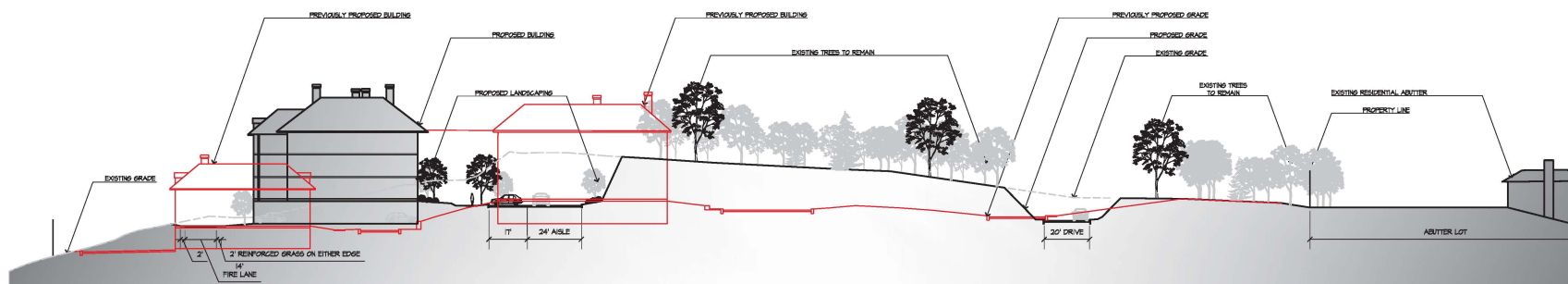


**4** PAVEMENT PATCH  
SCALE: 1/8" = 1'-0"

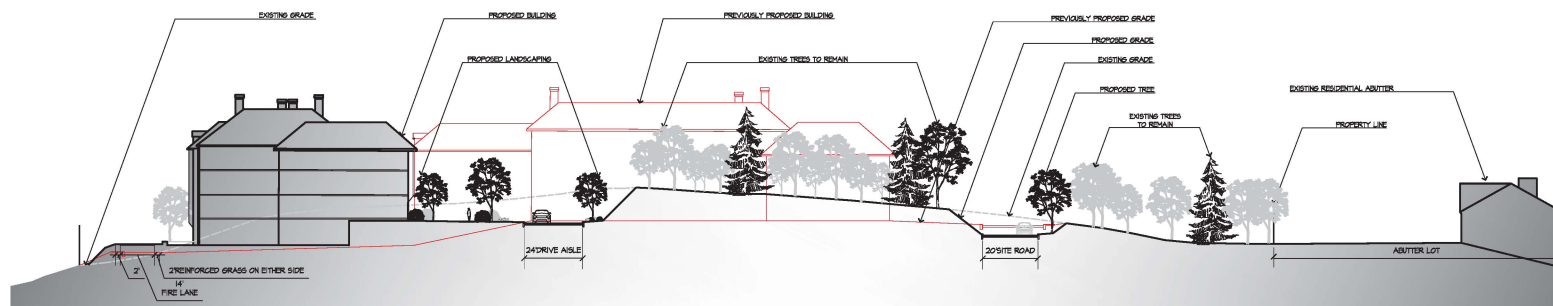
NO.	DATE	BY	CHKD.	APP'D.
1	12/15/11	JL	ML	ML
2	12/15/11	JL	ML	ML
3	12/15/11	JL	ML	ML
4	12/15/11	JL	ML	ML
5	12/15/11	JL	ML	ML
6	12/15/11	JL	ML	ML
7	12/15/11	JL	ML	ML
8	12/15/11	JL	ML	ML
9	12/15/11	JL	ML	ML
10	12/15/11	JL	ML	ML



KEY PLAN



1 SITE SECTION A-A1  
SCALE: 1/2" = 1'-0"



2 SITE SECTION B-B1  
SCALE: 1/2" = 1'-0"

VARIOUS EDITS	JM	TPK	10.24.14
VARIOUS EDITS	CL/JM	TPK	08.29.14
SPECIAL PERMIT FILING	CL/JM	TPK	08.04.14
VARIOUS EDITS	CL/JM	TPK	02.14.14
SITE PLAN	JM	TPK	11.28.13
Issued	By	Appd.	MM.00.YY

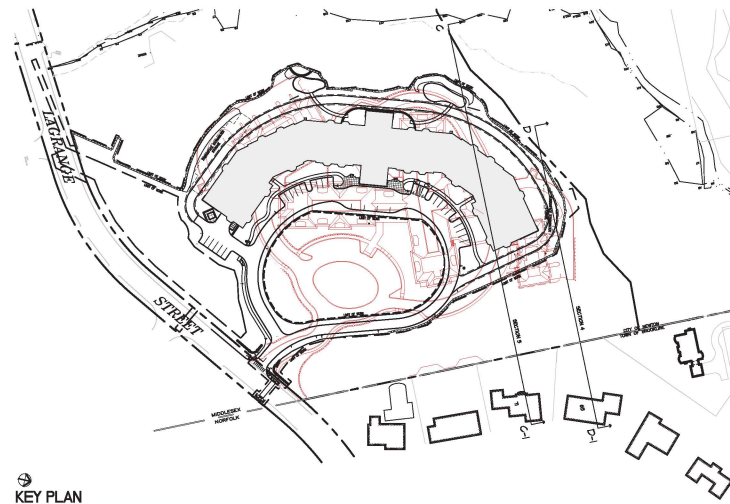
File Name:	JM/CL		
Drawn:	CLM	Checked:	MM.00.YY

Permit Seal

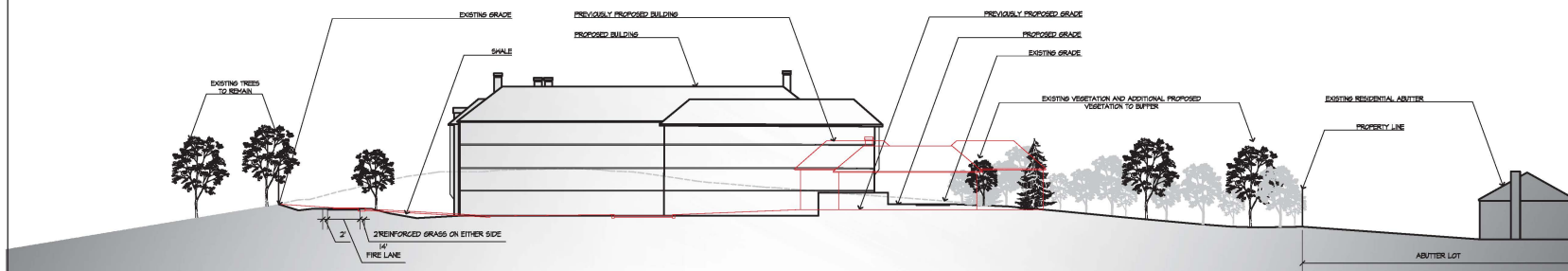
Client/Project  
CHESTNUT HILL REALTY  
THE RESIDENCES AT  
KESSELER WOODS  
NEWTON, MA

Title  
SITE SECTIONS 1

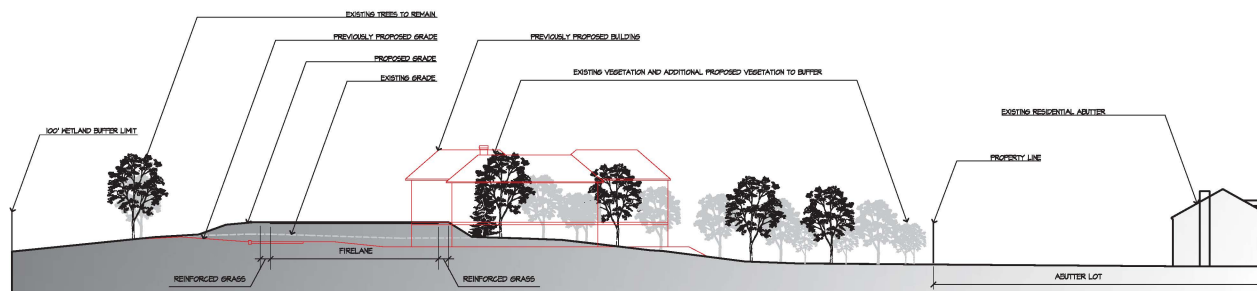
Project No.	Scale
210801167	AS NOTED



KEY PLAN



3 SITE SECTION C-C1  
SCALE: 1/2" = 1'-0"



4 SITE SECTION D-D1  
SCALE: 1/2" = 1'-0"

VARIOUS EDITS	JM	TPK	10.24.14
VARIOUS EDITS	CL/JM	TPK	08.29.14
SPECIAL PERMIT FILING	CL/JM	TPK	08.04.14
VARIOUS EDITS	CL/JM	TPK	02.14.14
SITE PLAN	JM	TPK	11.28.13
Issued	By	Appr.	MM/00/YY

File Name:	JM/CL		
Permit Seal	Dwn	Chkd	Dgn

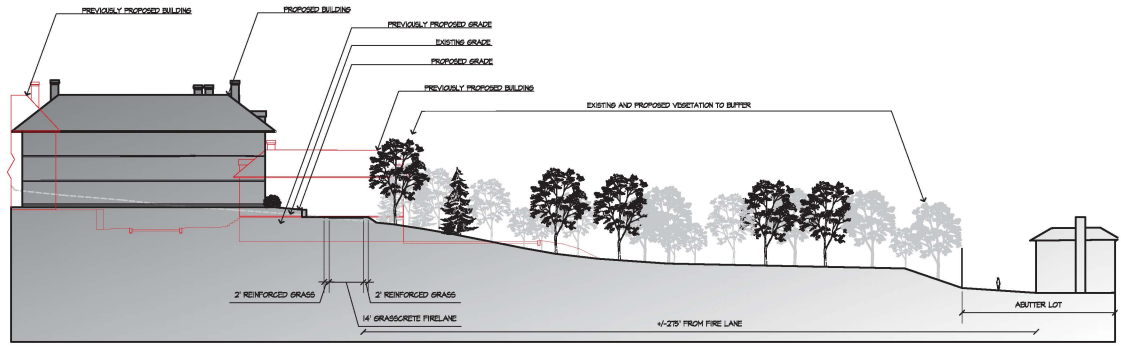
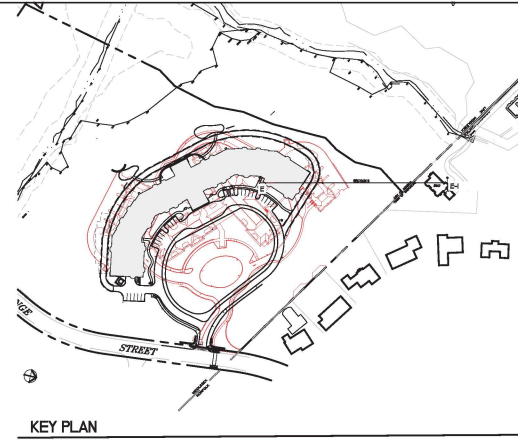
Client/Project  
CHESTNUT HILL REALTY  
THE RESIDENCES AT  
KESSELER WOODS  
NEWTON, MA

Title  
SITE SECTIONS 2

Project No.	Scale
210801167	AS NOTED

Drawing No.

L-801



5 SITE SECTION E-E1  
 SCALE: 1/2" = 1'-0"

VARIOUS EDITS	JM	TPK	10.24.14
VARIOUS EDITS	CL/JM	TPK	08.29.14
SPECIAL PERMIT FILING	CL/JM	TPK	08.04.14
VARIOUS EDITS	CL/JM	TPK	07.14.14
SITE PLAN	JM	TPK	11.28.13
Issued	By	App'd.	MM00.YY

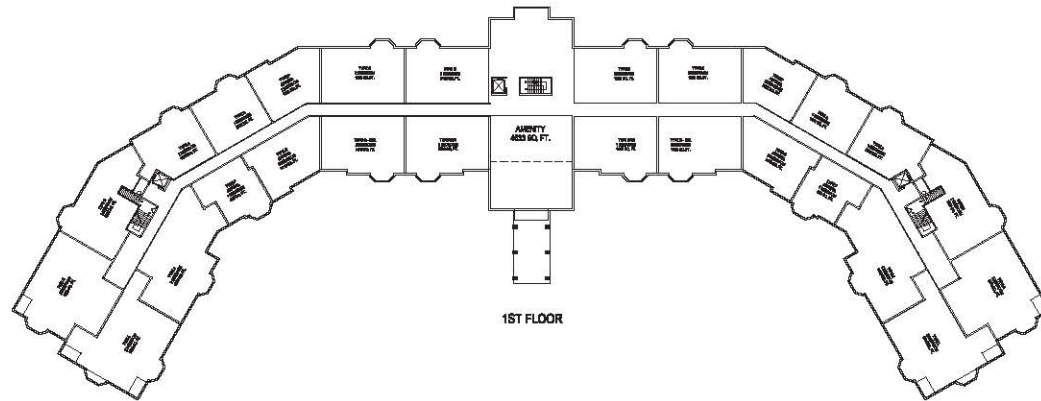
File Name: _____ JMECL  
 Dwn. Chkd. Dgns. MM00.YY  
 Permit-Seal

Client/Project  
 CHESTNUT HILL REALTY  
 THE RESIDENCES AT  
 KESSELER WOODS  
 NEWTON, MA

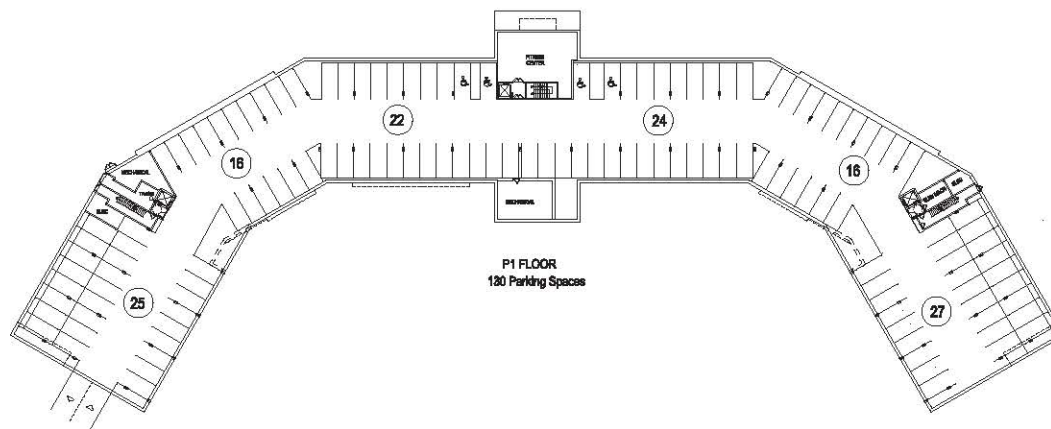
Title  
 SITE SECTIONS 3

Project No. 210801167 Scale AS NOTED

Thursday, October 23, 2014 1:21:23 PM  
 P:\14003 Kesseler Woods_CFRID\mhg\Working\CAD\Plot Files\14003_A1.00 - PARKING & FIRST FLOOR PLAN.dwg



BUILDING UNIT MIX		
UNITS	SQ. FT. RESIDUAL UNITS	TOTAL TOTAL
2 UNITS	4800	4800
4 UNITS	9600	9600
6 UNITS	14400	14400
8 UNITS	19200	19200
10 UNITS	24000	24000
12 UNITS	28800	28800
14 UNITS	33600	33600
16 UNITS	38400	38400
18 UNITS	43200	43200
20 UNITS	48000	48000
22 UNITS	52800	52800
24 UNITS	57600	57600
26 UNITS	62400	62400
28 UNITS	67200	67200
30 UNITS	72000	72000



**tat** |  
 the architectural team

The Architectural Team, Inc.  
 50 Commendant's Way at Admiral's Hill  
 Chelsea, MA 02150  
 T 617.889.4402  
 F 617.884.4329  
 www.architecturalteam.com  
 ©2013 The Architectural Team, Inc.

Consultant:

Revision:  
 A- REV 1 - AUGUST 28, 2014  
 B- REV 2 - OCTOBER 24, 2014

Architect of Record:

Drawn: A.S.  
 Checked: T.E.S.  
 Scale: 1/32" = 1'-0"  
 Key Plan:

Project Name:  
**Kesseler Woods**

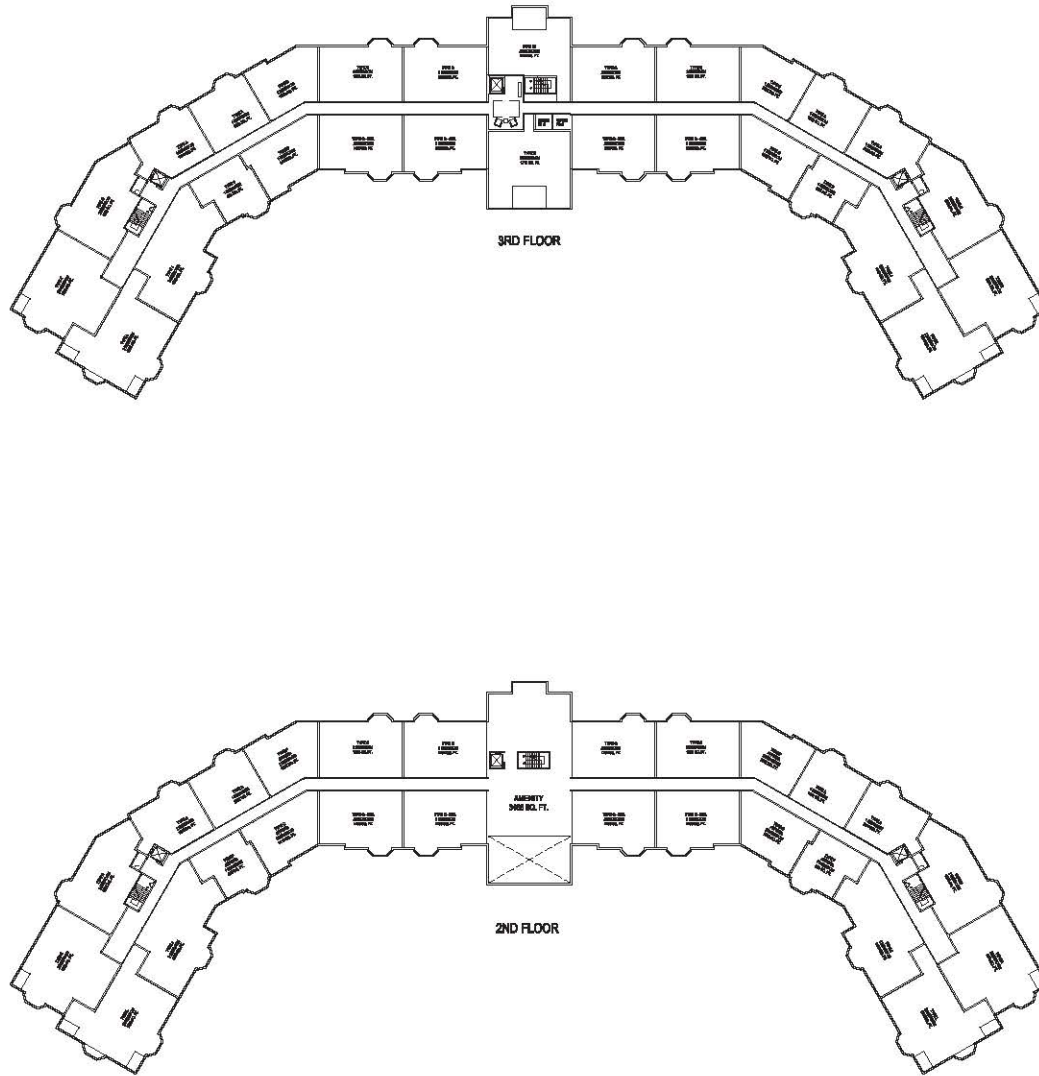
Sheet Name:  
**FLOOR PLAN:  
 PARKING FLOOR PLAN  
 &  
 FIRST FLOOR PLAN**

Project Number:  
 14003

Issue Date:  
 August 22, 2014

Sheet Number:  
**A1.00**

Thursday, October 23, 2014 1:31:48 PM  
 P:\14003 Kessler Woods - CHRD\working\CAD\PKt Files\14003_A1.01 - SECOND & THIRD FLOOR PLAN.dwg



BUILDING UNIT MIX		
REVISED	21 FL. MEDICAL UNITS	16,000 TOTAL
2 UNITS	48 20' MEDICAL UNITS	
	2 21' APPROX. MEDICAL UNITS	4,200 SQ. FT.
20 UNITS	4 21' APPROX. MEDICAL UNITS	
24 FLOOR	4 20' APPROX. MEDICAL UNITS	
	14 20' APPROX. MEDICAL UNITS	
	2 21' APPROX. MEDICAL UNITS	4,200 SQ. FT.
20 UNITS	4 21' APPROX. MEDICAL UNITS	
24 FLOOR	4 20' APPROX. MEDICAL UNITS	
	14 20' APPROX. MEDICAL UNITS	
20 UNITS	14 20' APPROX. MEDICAL UNITS	4,200 SQ. FT.
24 FLOOR	14 20' APPROX. MEDICAL UNITS	

**tat** |  
 the architectural team

The Architectural Team, Inc.  
 50 Commendant's Way at Admiral's Hill  
 Chelsea, MA 02150  
 T 617.889.4402  
 F 617.884.4329  
 www.architecturalteam.com  
 ©2013 The Architectural Team, Inc.

Consultant:

Revision:  
 △ REV 1 - AUGUST 28, 2014  
 △ REV 2 - OCTOBER 24, 2014

Architect of Record:

Drawn: A.S.  
 Checked: T.E.S.  
 Scale: 1/32" = 1'-0"  
 Key Plan:

Project Name:  
**Kessler Woods**

Sheet Name:  
**FLOOR PLAN:  
 SECOND FLOOR PLAN  
 &  
 THIRD FLOOR PLAN**

Project Number:  
 14003

Issue Date:  
 August 22, 2014

Sheet Number:  
**A1.01**

Consultant:

Revision:  
 ▲ REV 1 - AUGUST 28, 2014  
 ▲ REV 2 - OCTOBER 24, 2014

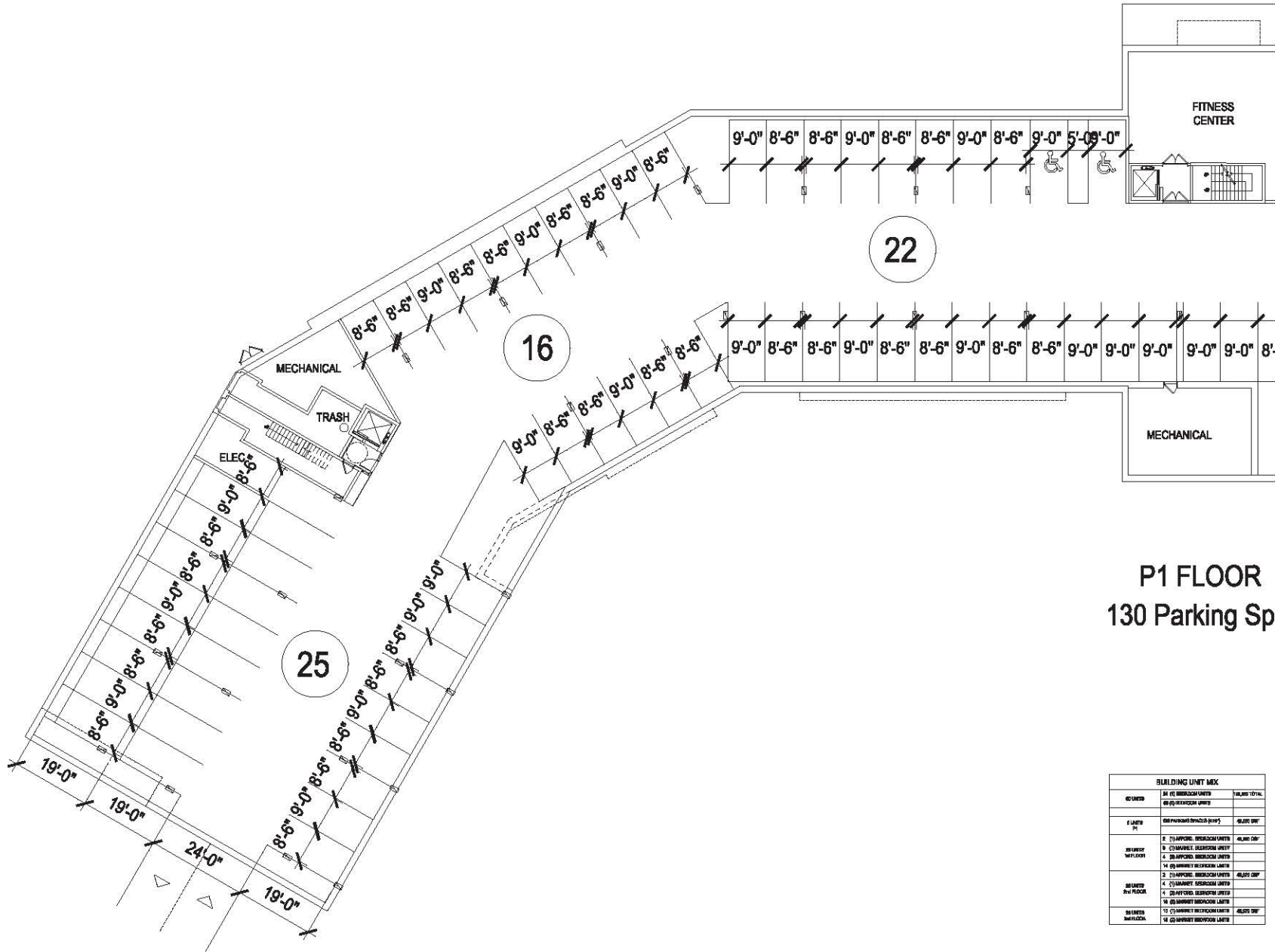
Architect of Record:

Drawn: A.S.  
 Checked: T.E.S.  
 Scale: 1/32" = 1'-0"  
 Key Plan:

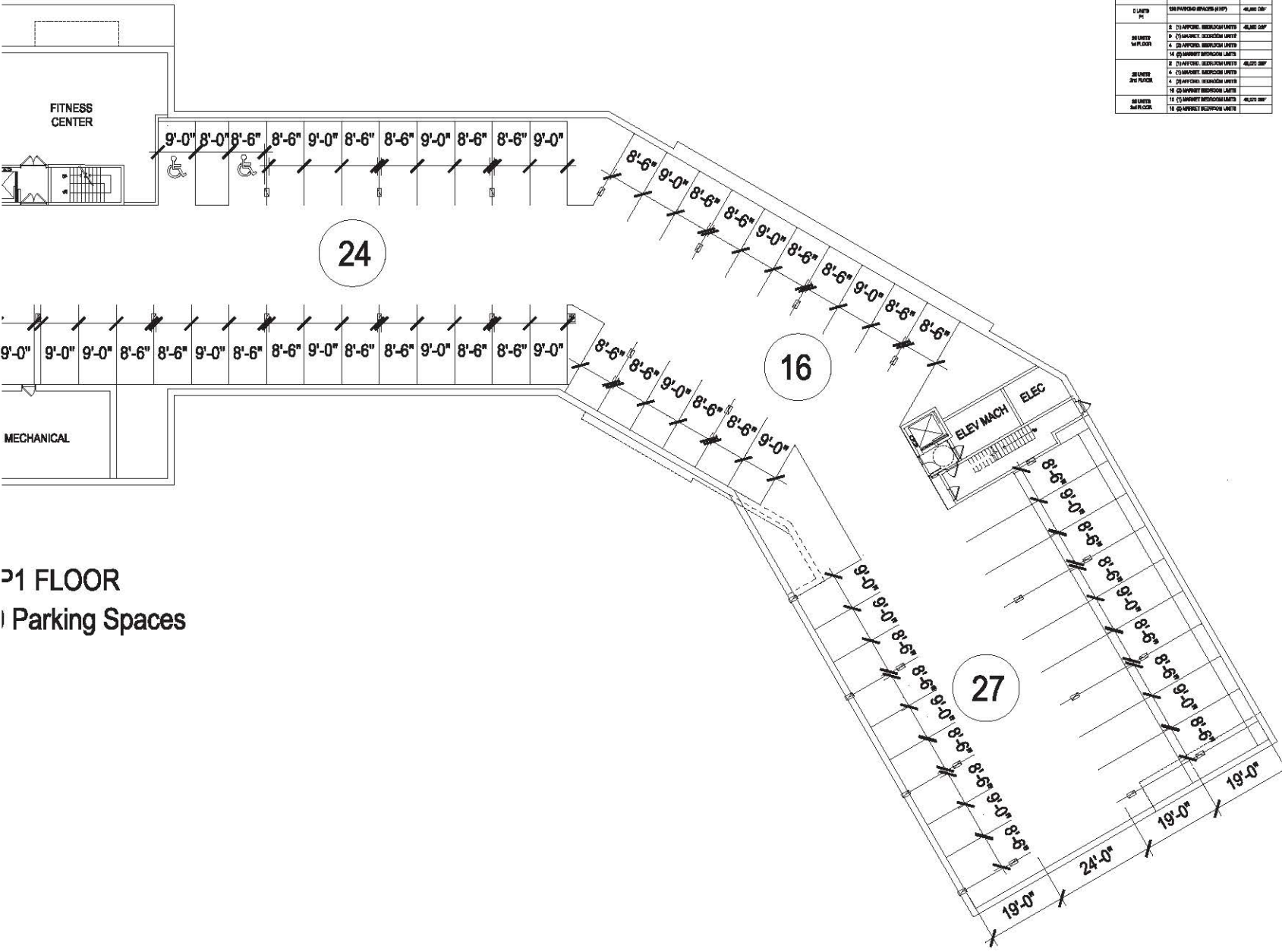
Project Name:  
Kessler Woods

Sheet Name:  
FLOOR PLAN:  
PARTIAL PARKING  
FLOOR PLAN

Project Number:  
14003  
 Issue Date:  
August 22, 2014  
 Sheet Number:  
A2.00A



BUILDING UNIT MIX		
UNIT	# OF BUILDING UNITS	TOTAL
1 UNIT	20	20
2 UNIT	10	10
3 UNIT	10	10
4 UNIT	10	10
5 UNIT	10	10
6 UNIT	10	10
7 UNIT	10	10
8 UNIT	10	10
9 UNIT	10	10
10 UNIT	10	10
11 UNIT	10	10
12 UNIT	10	10
13 UNIT	10	10
14 UNIT	10	10



P1 FLOOR  
 ) Parking Spaces

BUILDING UNIT MIX		
UNITS	SQ FT BUILDING UNITS	TOTAL SQ FT
2 UNITS	20,000 SQ FT	20,000 SQ FT
4 UNITS	40,000 SQ FT	40,000 SQ FT
6 UNITS	60,000 SQ FT	60,000 SQ FT
8 UNITS	80,000 SQ FT	80,000 SQ FT
10 UNITS	100,000 SQ FT	100,000 SQ FT
12 UNITS	120,000 SQ FT	120,000 SQ FT
14 UNITS	140,000 SQ FT	140,000 SQ FT
16 UNITS	160,000 SQ FT	160,000 SQ FT
18 UNITS	180,000 SQ FT	180,000 SQ FT
20 UNITS	200,000 SQ FT	200,000 SQ FT
22 UNITS	220,000 SQ FT	220,000 SQ FT
24 UNITS	240,000 SQ FT	240,000 SQ FT
26 UNITS	260,000 SQ FT	260,000 SQ FT
28 UNITS	280,000 SQ FT	280,000 SQ FT
30 UNITS	300,000 SQ FT	300,000 SQ FT
32 UNITS	320,000 SQ FT	320,000 SQ FT
34 UNITS	340,000 SQ FT	340,000 SQ FT
36 UNITS	360,000 SQ FT	360,000 SQ FT
38 UNITS	380,000 SQ FT	380,000 SQ FT
40 UNITS	400,000 SQ FT	400,000 SQ FT
42 UNITS	420,000 SQ FT	420,000 SQ FT
44 UNITS	440,000 SQ FT	440,000 SQ FT
46 UNITS	460,000 SQ FT	460,000 SQ FT
48 UNITS	480,000 SQ FT	480,000 SQ FT
50 UNITS	500,000 SQ FT	500,000 SQ FT
52 UNITS	520,000 SQ FT	520,000 SQ FT
54 UNITS	540,000 SQ FT	540,000 SQ FT
56 UNITS	560,000 SQ FT	560,000 SQ FT
58 UNITS	580,000 SQ FT	580,000 SQ FT
60 UNITS	600,000 SQ FT	600,000 SQ FT
62 UNITS	620,000 SQ FT	620,000 SQ FT
64 UNITS	640,000 SQ FT	640,000 SQ FT
66 UNITS	660,000 SQ FT	660,000 SQ FT
68 UNITS	680,000 SQ FT	680,000 SQ FT
70 UNITS	700,000 SQ FT	700,000 SQ FT
72 UNITS	720,000 SQ FT	720,000 SQ FT
74 UNITS	740,000 SQ FT	740,000 SQ FT
76 UNITS	760,000 SQ FT	760,000 SQ FT
78 UNITS	780,000 SQ FT	780,000 SQ FT
80 UNITS	800,000 SQ FT	800,000 SQ FT
82 UNITS	820,000 SQ FT	820,000 SQ FT
84 UNITS	840,000 SQ FT	840,000 SQ FT
86 UNITS	860,000 SQ FT	860,000 SQ FT
88 UNITS	880,000 SQ FT	880,000 SQ FT
90 UNITS	900,000 SQ FT	900,000 SQ FT
92 UNITS	920,000 SQ FT	920,000 SQ FT
94 UNITS	940,000 SQ FT	940,000 SQ FT
96 UNITS	960,000 SQ FT	960,000 SQ FT
98 UNITS	980,000 SQ FT	980,000 SQ FT
100 UNITS	1,000,000 SQ FT	1,000,000 SQ FT

**tat** |  
 the architectural team

The Architectural Team, Inc.  
 50 Commendant's Way at Admiral's Hill  
 Chelsea, MA 02150  
 T 617.889.4402  
 F 617.884.4329  
 www.architecturalteam.com  
 ©2014 The Architectural Team, Inc.

Consultant:

Revision:  
 △ REV 1 - AUGUST 28, 2014  
 ▽ REV 2 - OCTOBER 24, 2014

Architect of Record:

Drawn: A.S.  
 Checked: T.E.S.  
 Scale: 1/32" = 1'-0"  
 Key Plan:

Project Name:  
**Kessler Woods**

Sheet Name:  
**FLOOR PLAN:  
 PARTIAL PARKING  
 FLOOR PLAN**

Project Number:  
 14003  
 Issue Date:  
 August 22, 2014  
 Sheet Number:

**A2.00B**

Thursday, October 23, 2014 1:26:12 PM  
 P:\14003 Kessler Woods CHRD\mhg\Working\CAD\Pln\Floor1\4003_A2.00B - ENLARGED PLANS.dwg



Consultant:

Revision:  
 ▲ REV 1 - AUGUST 28, 2014  
 ▲ REV 2 - OCTOBER 24, 2014

Architect of Record:

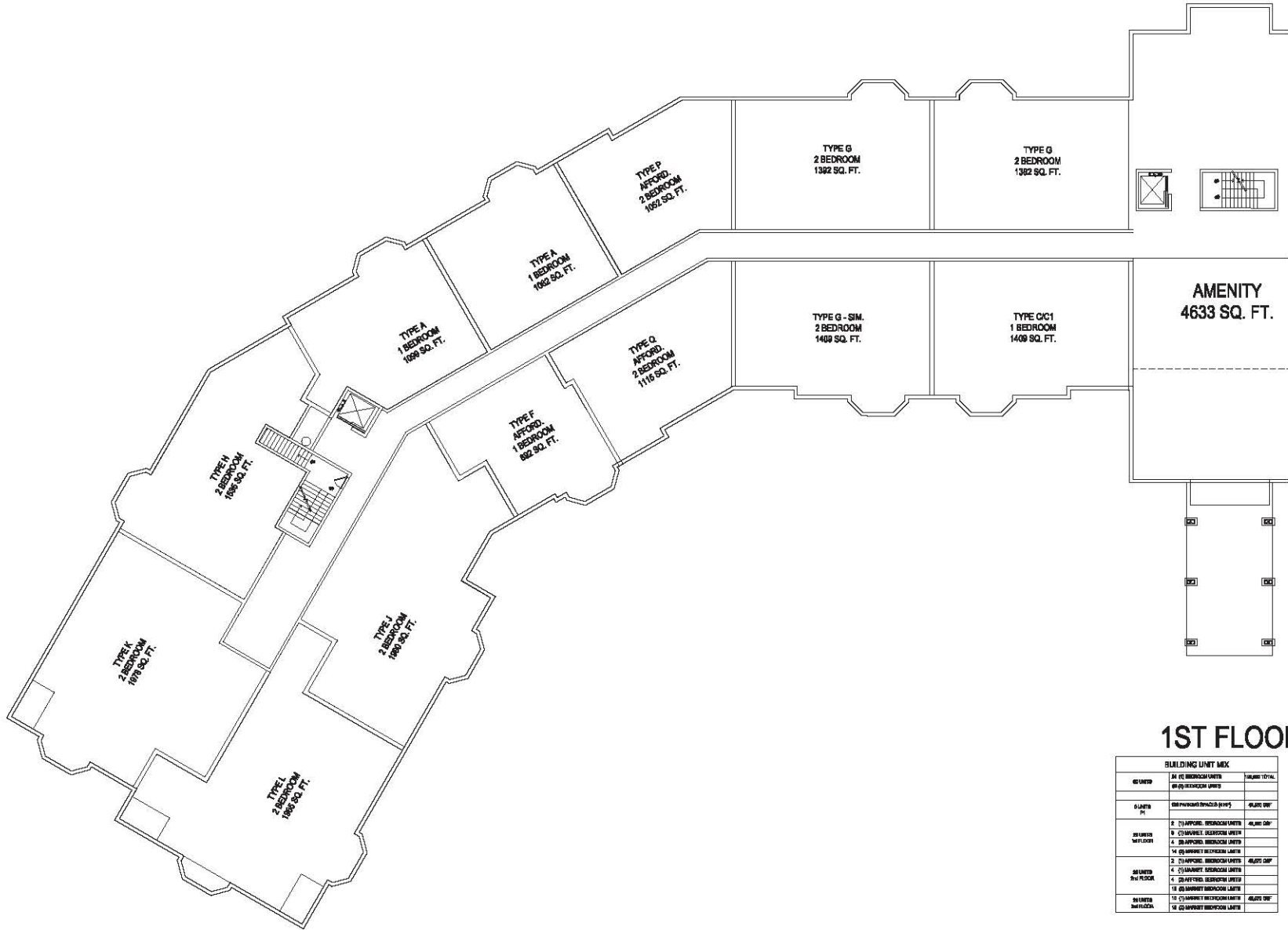
Drawn: A.S.  
 Checked: T.E.S.  
 Scale: 1/32" = 1'-0"  
 Key Plan:

Project Name:  
**Kessler Woods**

Sheet Name:  
**FLOOR PLAN:  
 PARTIAL FIRST  
 FLOOR PLAN**

Project Number:  
**14003**  
 Issue Date:  
**August 22, 2014**  
 Sheet Number:

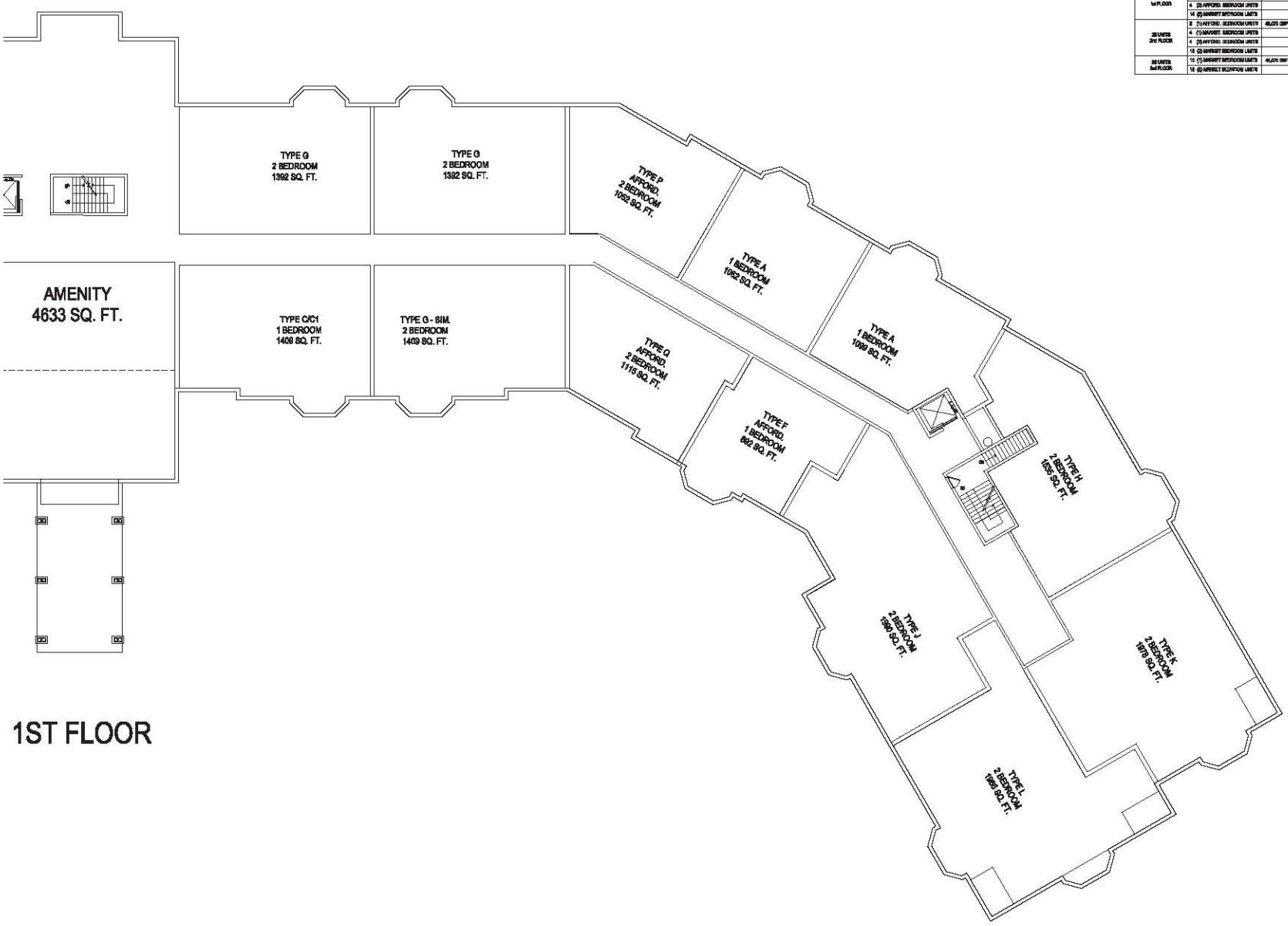
**A2.01A**



**1ST FLOOR**

BUILDING UNIT MIX		
UNIT	# OF BEDROOM UNITS	TOTAL TOTAL
01 UNIT	01 01 BEDROOM UNIT	01 UNIT TOTAL
02 UNIT	02 02 BEDROOM UNIT	02 UNIT TOTAL
03 UNIT	03 03 BEDROOM UNIT	03 UNIT TOTAL
04 UNIT	04 04 BEDROOM UNIT	04 UNIT TOTAL
05 UNIT	05 05 BEDROOM UNIT	05 UNIT TOTAL
06 UNIT	06 06 BEDROOM UNIT	06 UNIT TOTAL
07 UNIT	07 07 BEDROOM UNIT	07 UNIT TOTAL
08 UNIT	08 08 BEDROOM UNIT	08 UNIT TOTAL
09 UNIT	09 09 BEDROOM UNIT	09 UNIT TOTAL
10 UNIT	10 10 BEDROOM UNIT	10 UNIT TOTAL
11 UNIT	11 11 BEDROOM UNIT	11 UNIT TOTAL
12 UNIT	12 12 BEDROOM UNIT	12 UNIT TOTAL
13 UNIT	13 13 BEDROOM UNIT	13 UNIT TOTAL
14 UNIT	14 14 BEDROOM UNIT	14 UNIT TOTAL

1ST FLOOR



UNIT #	TYPE	SQ. FT.	DATE
101	TYPE G	1392	08/22/14
102	TYPE G	1392	08/22/14
103	TYPE P	1092	08/22/14
104	TYPE A	1099	08/22/14
105	TYPE A	1099	08/22/14
106	TYPE F	892	08/22/14
107	TYPE G	1115	08/22/14
108	TYPE O	1409	08/22/14
109	TYPE O	1409	08/22/14
110	TYPE C	1409	08/22/14
111	TYPE J	1380	08/22/14
112	TYPE K	1370	08/22/14
113	TYPE L	1099	08/22/14
114	TYPE M	1180	08/22/14

**tat** |  
 the architectural team

The Architectural Team, Inc.  
 50 Commendant's Way at Admiral's Hill  
 Chelsea, MA 02150  
 T 617.889.4402  
 F 617.884.4329  
 www.architecturalteam.com  
 ©2013 The Architectural Team, Inc.

Consultant: _____

Revision:  
 ▲ REV 1 - AUGUST 23, 2014  
 ▲ REV 2 - OCTOBER 24, 2014

Architect of Record: _____

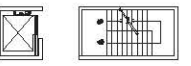
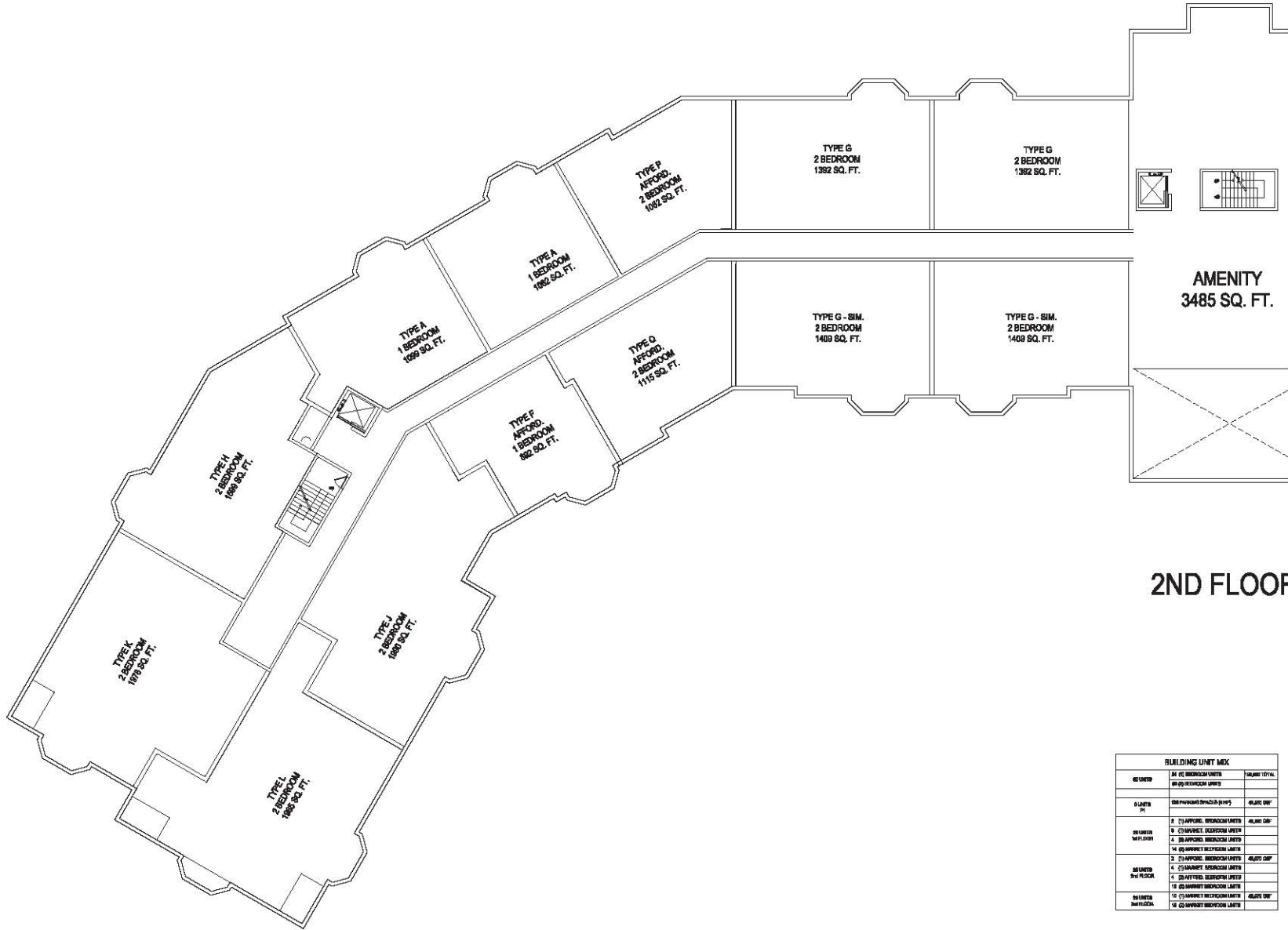
Drawn: A.S.  
 Checked: T.E.S.  
 Scale: 1/32" = 1'-0"  
 Key Plan: _____

Project Name: **Kessler Woods**

Sheet Name: **FLOOR PLAN:  
 PARTIAL FIRST  
 FLOOR PLAN**

Project Number: **14003**  
 Issue Date: **August 22, 2014**  
 Sheet Number: **A2.01B**

Thursday, October 23, 2014 1:33:46 PM  
 P:\14003 Kessler Woods C:\RVD\working\Working\CAD\Plot Files\14003_A2.02A - ENLARGED PLANS.dwg



**AMENITY**  
 3485 SQ. FT.

**2ND FLOOR**

BUILDING UNIT MIX		
UNIT	# OF BEDROOM UNITS	TOTAL SQ. FT.
01 UNIT	01 01 BEDROOM UNIT	4500 SQ. FT.
02 UNIT	02 02 BEDROOM UNIT	4500 SQ. FT.
03 UNIT	03 03 BEDROOM UNIT	4500 SQ. FT.
04 UNIT	04 04 BEDROOM UNIT	4500 SQ. FT.
05 UNIT	05 05 BEDROOM UNIT	4500 SQ. FT.
06 UNIT	06 06 BEDROOM UNIT	4500 SQ. FT.
07 UNIT	07 07 BEDROOM UNIT	4500 SQ. FT.
08 UNIT	08 08 BEDROOM UNIT	4500 SQ. FT.
09 UNIT	09 09 BEDROOM UNIT	4500 SQ. FT.
10 UNIT	10 10 BEDROOM UNIT	4500 SQ. FT.
11 UNIT	11 11 BEDROOM UNIT	4500 SQ. FT.
12 UNIT	12 12 BEDROOM UNIT	4500 SQ. FT.
13 UNIT	13 13 BEDROOM UNIT	4500 SQ. FT.
14 UNIT	14 14 BEDROOM UNIT	4500 SQ. FT.

**tat** |  
 the architectural team

The Architectural Team, Inc.  
 50 Commendant's Way at Admira's Hill  
 Chelsea, MA 02150  
 T 617.889.4402  
 F 617.884.4329  
 www.architecturalteam.com  
 ©2011 The Architectural Team, Inc.

Consultant:

Revision:  
 ▲ REV 1 - AUGUST 29, 2014  
 ▲ REV 2 - OCTOBER 24, 2014

Architect of Record:

Drawn: A.S.  
 Checked: T.E.S.  
 Scale: 1/32" = 1'-0"  
 Key Plan:

Project Name:  
**Kessler Woods**

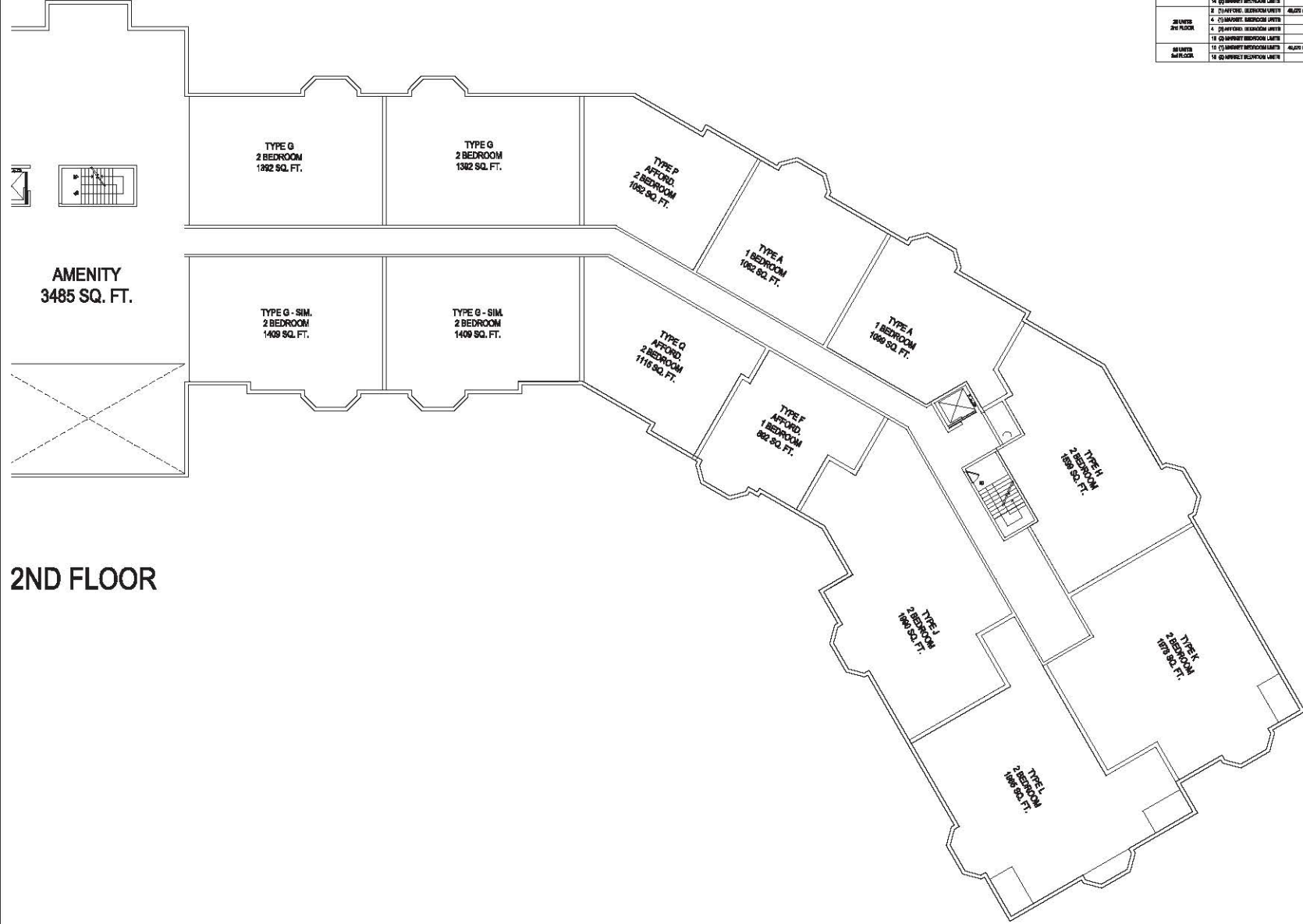
Sheet Name:  
**FLOOR PLAN:  
 PARTIAL SECOND  
 FLOOR PLAN**

Project Number:  
**14003**

Issue Date:  
**August 22, 2014**

Sheet Number:  
**A2.02A**

Thursday, October 23, 2014 1:30:02 PM  
 P:\14003 Kessler Woods CHRID\mhg\Working\CAD\Plk Files\14003_A2.02B - ENLARGED PLANS.dwg



BUILDING UNIT MIX		
UNITS	SQ. FT. BEDROOM UNITS	TOTAL SQ. FT.
2 UNITS	27,140 SQ. FT.	54,280 SQ. FT.
4 UNITS	54,280 SQ. FT.	217,120 SQ. FT.
8 UNITS	108,560 SQ. FT.	434,240 SQ. FT.
16 UNITS	217,120 SQ. FT.	868,480 SQ. FT.
32 UNITS	434,240 SQ. FT.	1,736,960 SQ. FT.
64 UNITS	868,480 SQ. FT.	3,473,920 SQ. FT.
128 UNITS	1,736,960 SQ. FT.	6,947,840 SQ. FT.
256 UNITS	3,473,920 SQ. FT.	13,895,680 SQ. FT.
512 UNITS	6,947,840 SQ. FT.	27,791,360 SQ. FT.
1024 UNITS	13,895,680 SQ. FT.	55,582,720 SQ. FT.

**tat** |  
 the architectural team

The Architectural Team, Inc.  
 50 Commendant's Way at Admiral's Hill  
 Chelsea, MA 02150  
 T 617.889.4402  
 F 617.884.4329  
 www.architecturalteam.com  
 ©2011 The Architectural Team, Inc.

Consultant:

Revision:  
 ▲ REV 1 - AUGUST 23, 2014  
 ▲ REV 2 - OCTOBER 24, 2014

Architect of Record:

Drawn: A.S.  
 Checked: T.E.S.  
 Scale: 1/32" = 1'-0"  
 Key Plan:

Project Name:  
**Kessler Woods**

Sheet Name:  
**FLOOR PLAN:  
 PARTIAL SECOND  
 FLOOR PLAN**

Project Number:  
 14003

Issue Date:  
 August 22, 2014

Sheet Number:  
**A2.02B**

Consultant:

Revision:

- ▲ REV 1 - AUGUST 20, 2014
- ▲ REV 2 - OCTOBER 24, 2014

Architect of Record:

Drawn: A.S.

Checked: T.E.S.

Scale: 1/32" = 1'-0"

Key Plan:

Project Name:

**Kessler Woods**

Sheet Name:

**FLOOR PLAN:  
PARTIAL THIRD  
FLOOR PLAN**

Project Number:

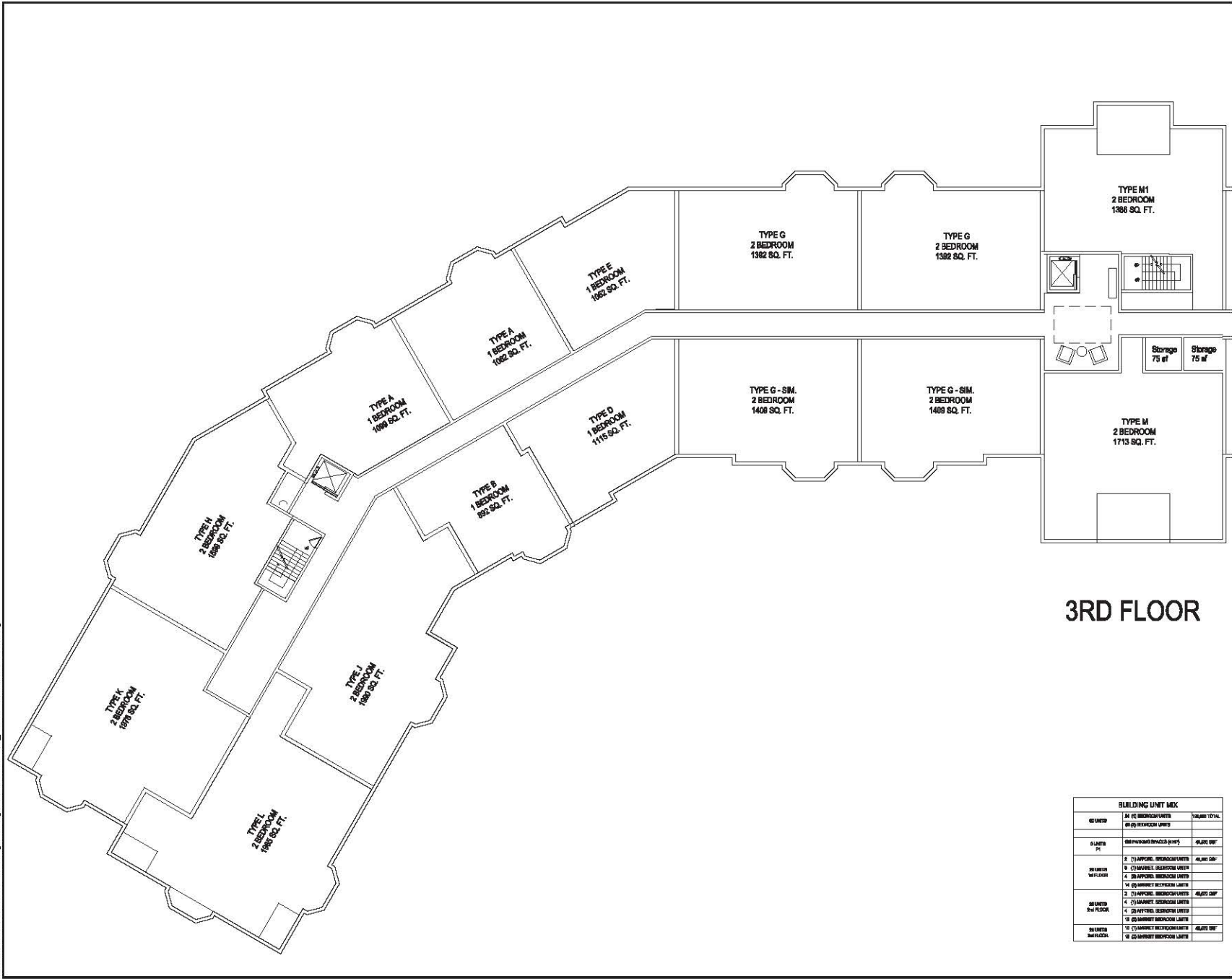
**14003**

Issue Date:

**August 22, 2014**

Sheet Number:

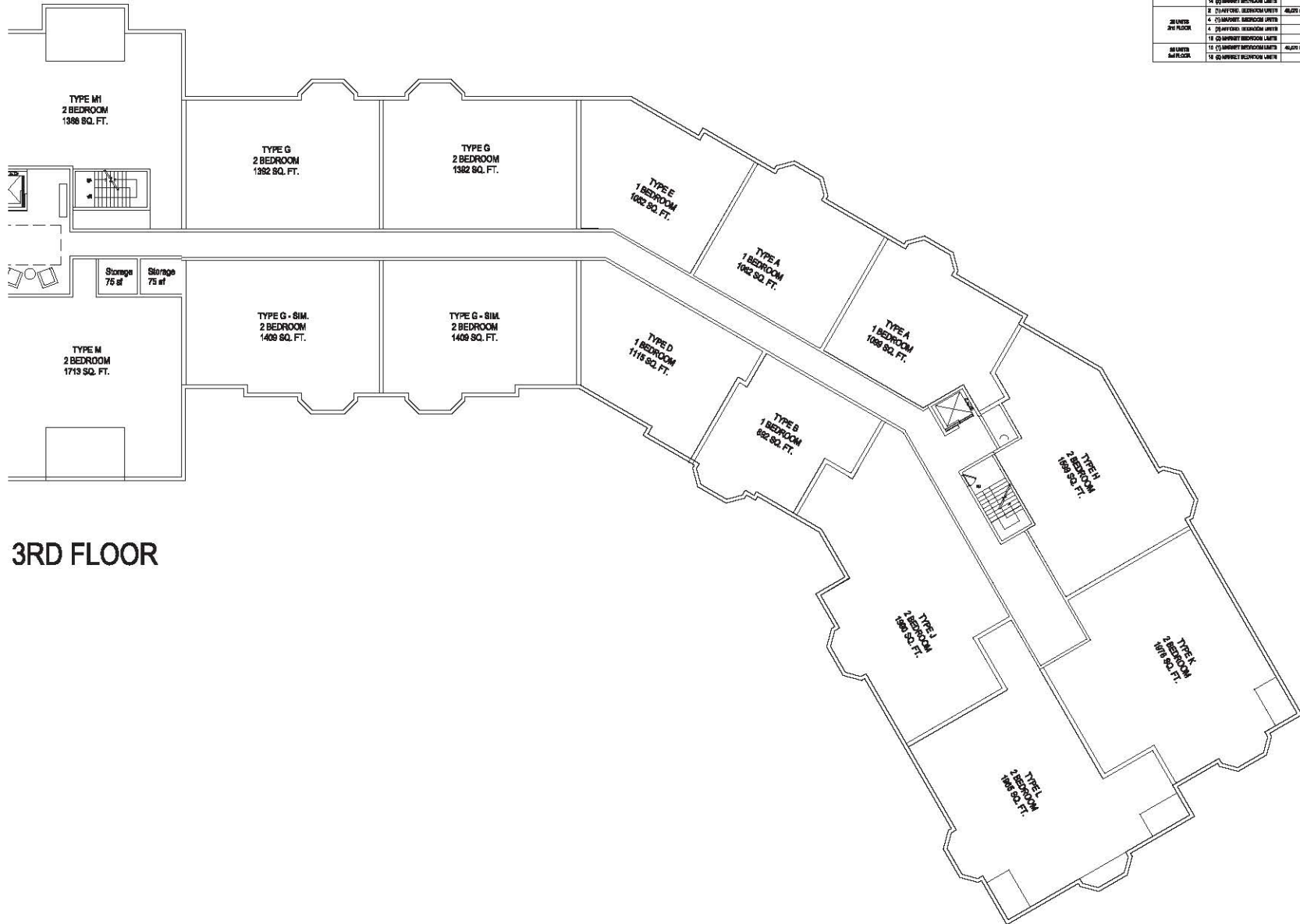
**A2.03A**



BUILDING UNIT MIX		
UNIT	# OF BEDROOM UNITS	TOTAL SQ. FT.
ALL UNITS	81 (2) BEDROOM UNITS	104,801 SQ. FT.
ALL UNITS	88 (2) BEDROOM UNITS	114,801 SQ. FT.
3RD FLOOR	2 (2) BEDROOM UNITS	4,280 SQ. FT.
3RD FLOOR	4 (2) 1-BEDROOM UNITS	5,568 SQ. FT.
3RD FLOOR	4 (2) 1-BEDROOM UNITS	5,568 SQ. FT.
3RD FLOOR	1 (2) 2-BEDROOM UNITS	3,780 SQ. FT.
3RD FLOOR	1 (2) 2-BEDROOM UNITS	3,780 SQ. FT.
3RD FLOOR	1 (2) 2-BEDROOM UNITS	3,780 SQ. FT.
3RD FLOOR	1 (2) 2-BEDROOM UNITS	3,780 SQ. FT.
3RD FLOOR	1 (2) 2-BEDROOM UNITS	3,780 SQ. FT.
3RD FLOOR	1 (2) 2-BEDROOM UNITS	3,780 SQ. FT.
3RD FLOOR	1 (2) 2-BEDROOM UNITS	3,780 SQ. FT.
3RD FLOOR	1 (2) 2-BEDROOM UNITS	3,780 SQ. FT.
3RD FLOOR	1 (2) 2-BEDROOM UNITS	3,780 SQ. FT.

Thursday, October 23, 2014 1:25:17 PM  
 P:\14003 Kessler Woods CHRD\mhgh\Working\CAD\Plc\Floor\14003_A2.03B - ENLARGED PLANS.dwg

3RD FLOOR



BUILDING UNIT MIX			
UNITS	SQ. FT. BEDROOM UNITS	SQ. FT. COMMON UNITS	TOTAL SQ. FT.
2 UNITS	21,714	4,000	25,714
4 UNITS	43,428	8,000	51,428
6 UNITS	65,142	12,000	77,142
8 UNITS	86,856	16,000	102,856
10 UNITS	108,570	20,000	128,570
12 UNITS	130,284	24,000	154,284
14 UNITS	152,000	28,000	180,000
16 UNITS	173,714	32,000	205,714
18 UNITS	195,428	36,000	231,428
20 UNITS	217,142	40,000	257,142
22 UNITS	238,856	44,000	282,856
24 UNITS	260,570	48,000	308,570
26 UNITS	282,284	52,000	334,284
28 UNITS	304,000	56,000	360,000
30 UNITS	325,714	60,000	385,714
32 UNITS	347,428	64,000	411,428
34 UNITS	369,142	68,000	437,142
36 UNITS	390,856	72,000	462,856
38 UNITS	412,570	76,000	488,570
40 UNITS	434,284	80,000	514,284
42 UNITS	456,000	84,000	540,000
44 UNITS	477,714	88,000	565,714
46 UNITS	499,428	92,000	591,428
48 UNITS	521,142	96,000	617,142
50 UNITS	542,856	100,000	642,856

**tat** |  
 the architectural team

The Architectural Team, Inc.  
 50 Commendant's Way at Admiral's Hill  
 Chelsea, MA 02150  
 T 617.889.4402  
 F 617.884.4329  
 www.architecturalteam.com  
 ©2013 The Architectural Team, Inc.

Consultant:

Revision:  
 ▲ REV 1 - AUGUST 28, 2014  
 ▲ REV 2 - OCTOBER 24, 2014

Architect of Record:

Drawn: A.S.  
 Checked: T.E.S.  
 Scale: 3/32" = 1'-0"  
 Key Plan:

Project Name:  
**Kessler Woods**

Sheet Name:  
**FLOOR PLAN:  
 PARTIAL THIRD  
 FLOOR PLAN**

Project Number:  
**14003**

Issue Date:  
**August 22, 2014**

Sheet Number:  
**A2.03B**

Consultant:

Revision:

Architect of Record:

Drawn: S.B.

Checked: T.E.S.

Scale: 1/8" = 1'-0"

Key Plan:

Project Name:

**Kessler Woods**

Sheet Name:

**BUILDING ELEVATIONS**

Project Number:

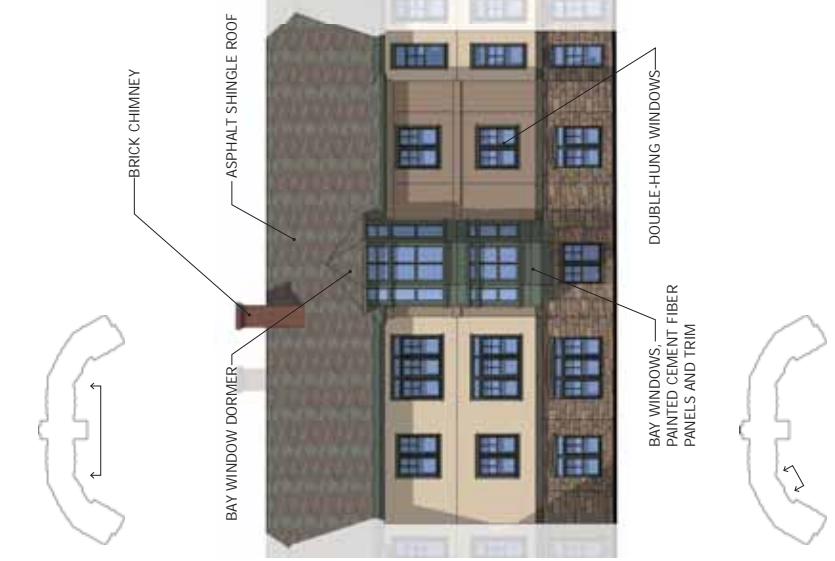
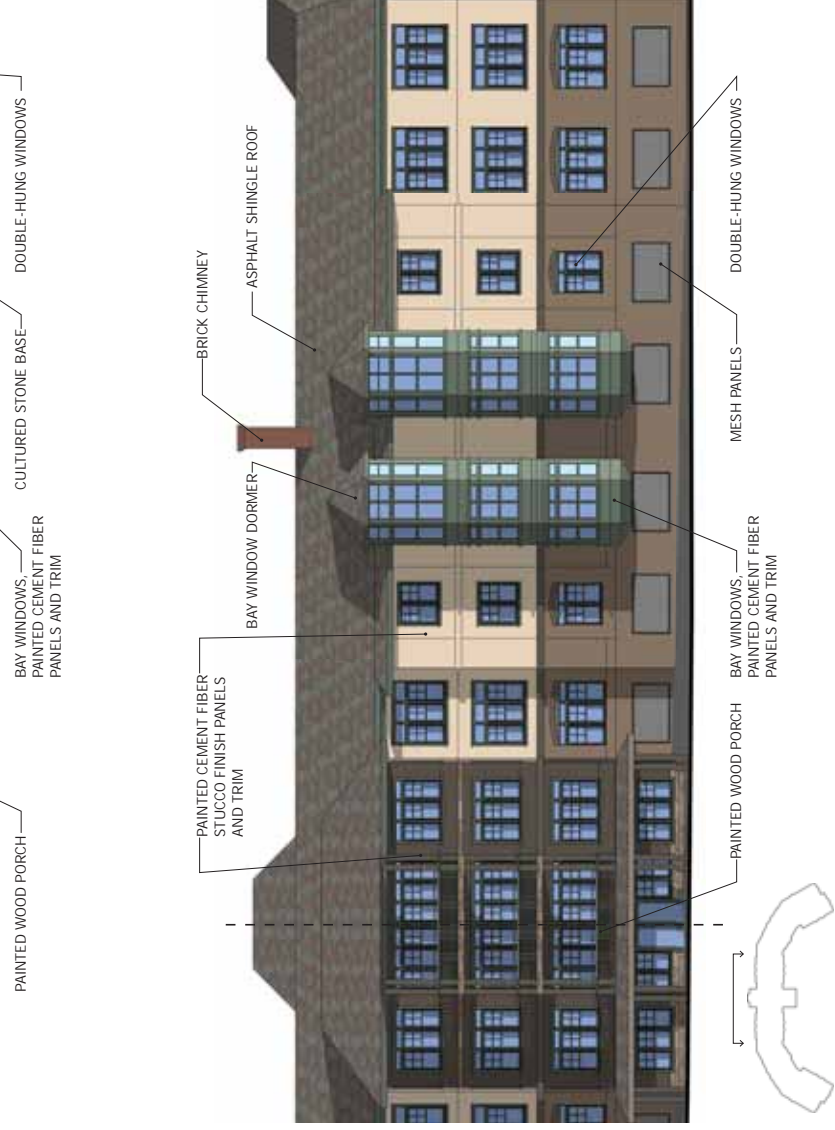
14003

Issue Date:

October 24, 2014

Sheet Number:

**A4.01**



Consultant:

Revision:

Architect of Record:

Drawn: S.E.  
Checked: T.E.S.  
Scale: 1/8" = 1'-0"  
Key Print:

Project Name:  
**Kessler Woods**

Sheet Name:  
**BUILDING ELEVATIONS**

Project Number:  
**14003**

Issue Date:  
**October 24, 2014**

Sheet Number:

**A4.02**



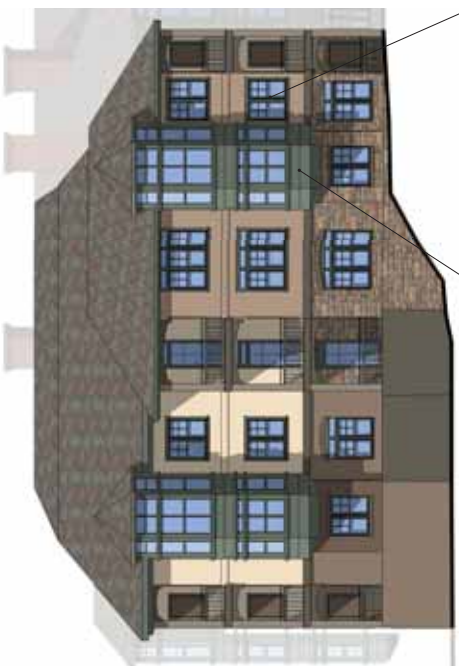
PAINTED WOOD BALCONY



BRICK CHIMNEY

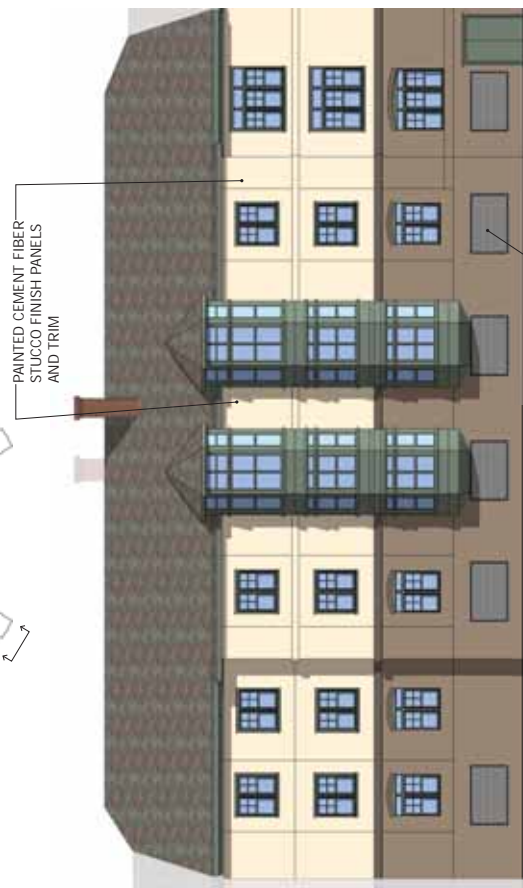
ASPHALT SHINGLE ROOF

BAY WINDOW DORMER



DOUBLE-HUNG WINDOWS

BAY WINDOWS, PAINTED CEMENT FIBER PANELS AND TRIM



PAINTED CEMENT FIBER STUCCO FINISH PANELS AND TRIM

MESH PANELS



- ROOF TOP
- ROOF MID-POINT
- ROOF EVE
- THIRD FLOOR
- SECOND FLOOR
- FIRST FLOOR
- GARAGE FLOOR



Consultant:

Revisors:  
_____  
_____  
_____  
_____

Architect of Record:

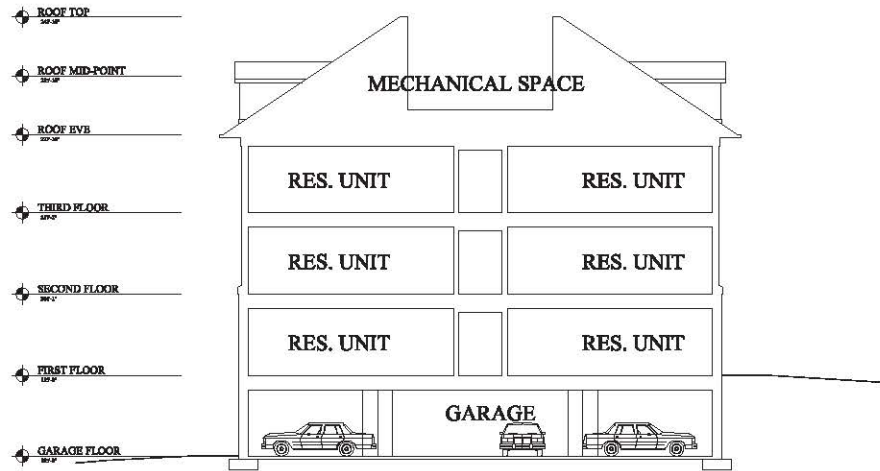
Drawn: A.B.  
Checked: T.E.S.  
Scale: 1/8" = 1'-0"  
Key Plan:

Project Name:  
**Kessler Woods**

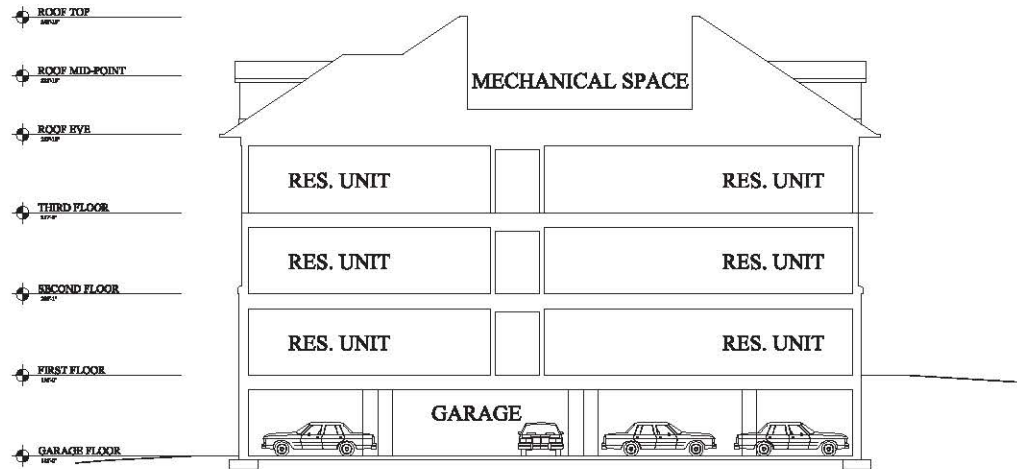
Sheet Name:  
**BUILDING SECTIONS:**

Project Number:  
**14003**  
Issue Date:  
**August 4, 2014**  
Sheet Number:

**A5.01**



**71** PROPOSED DESIGN  
SCALE: 1/30



**70** PROPOSED DESIGN  
SCALE: 1/30