

APPENDIX I – PHOTOGRAPHS OF EXISTING CONDITIONS

I-01 – I-06 Windows
I-07 – I-11 Door Entry
I-12 – I-15 Miscellaneous



Window Type E- South Elevation

W-1



Window Type F- South Elevation

W-2

Building Envelope Study
Newton Health Department Building
Newton, MA

I-01



Window Type A - South Elevation

W-3



Window Type A-7 - East Elevation

W-4



Rotted Sill

Loose Repointing Grout

Window Type B1 - North Elevation- Sill
Rot

W-5



Transom

Missing Panes

Fixed Casements

Double Hung Window

Window Type B1- North Elevation

W-6



Window Type C - South Elevation

W-7



Window Type B-2 - North Elevation

W-8



Window Type C-4 - West Elevation

W-9



Window Type B-4 - South Elevation

W-10

Building Envelope Study
Newton Health Department Building
Newton, MA

I-05



Paint flaking off to bare wood

Detail of Window Sill-

W-11



Brick Sills Need Repointing

Detail of Brick Window Sill-

W-12



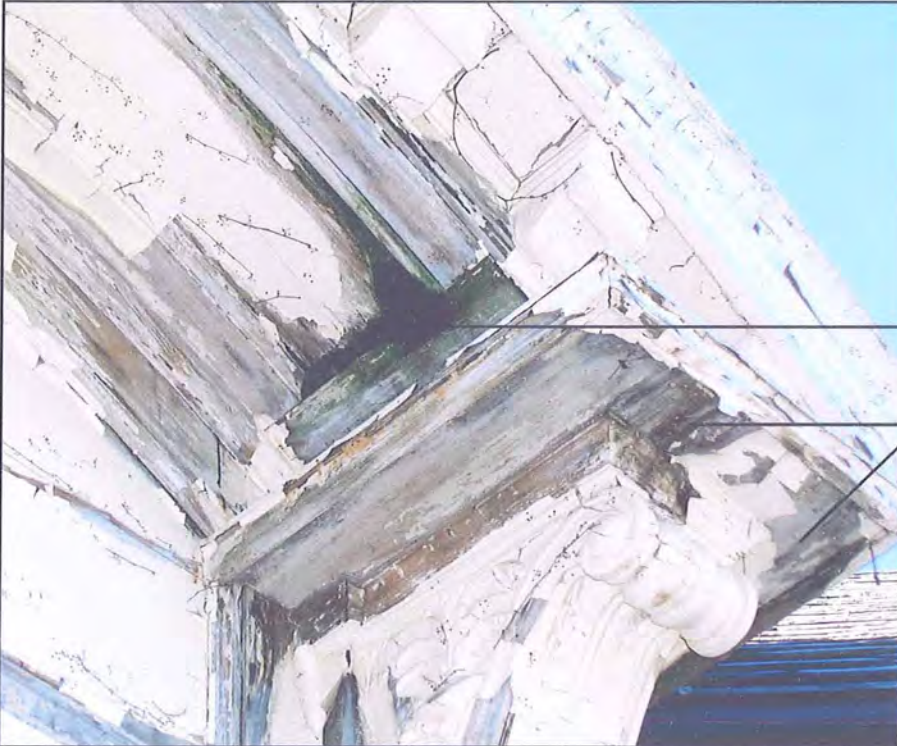
Emergency Lights

Fire alarm beacon-broken

Master box

Front "Ceremonial" Entry

D-01

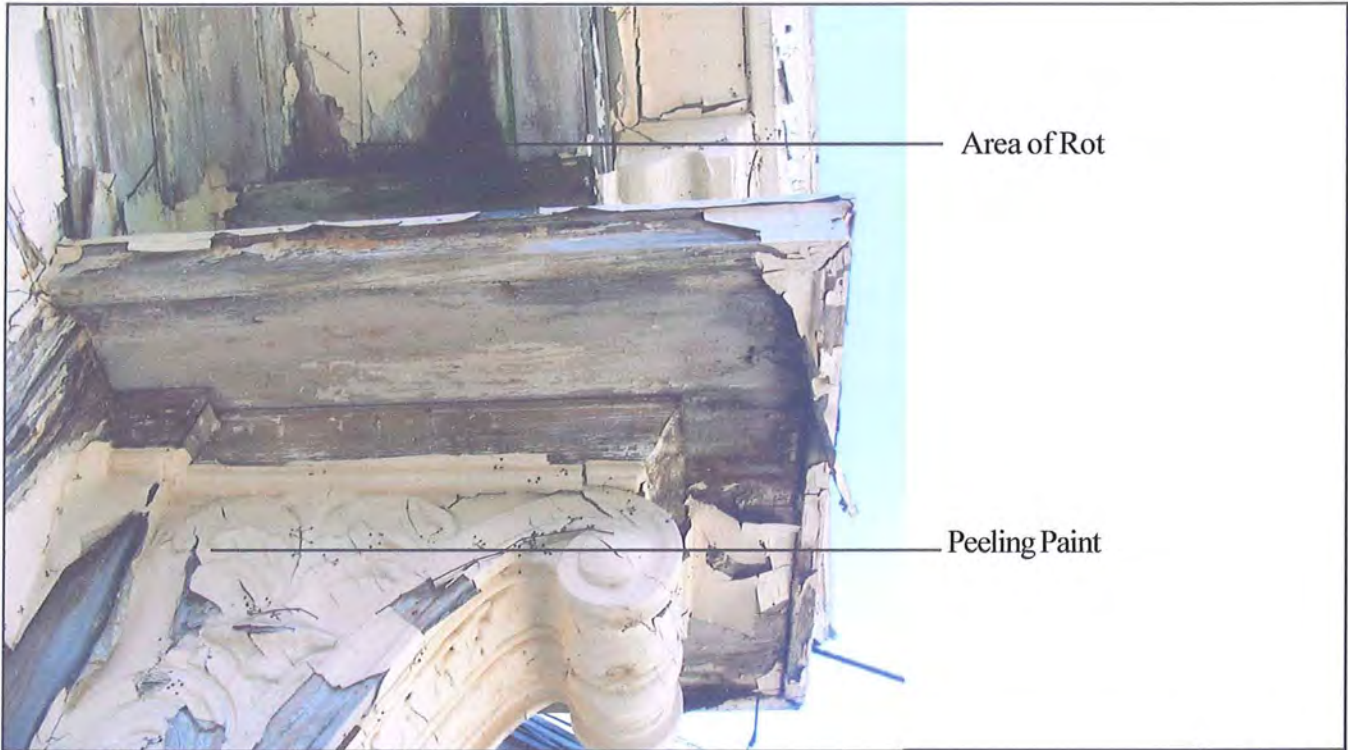


Rotted soffit

Rotted Console

Detail of Curved Entry Hood

D-02



Area of Rot

Peeling Paint

Detail of Carved Wood Console

D-03



Peeling Paint

Deteriorated wood pilaster

Stone Plinth

Detail of Wood Pilaster and Stone Plinth

D-04



Rotted Soffit

D-05

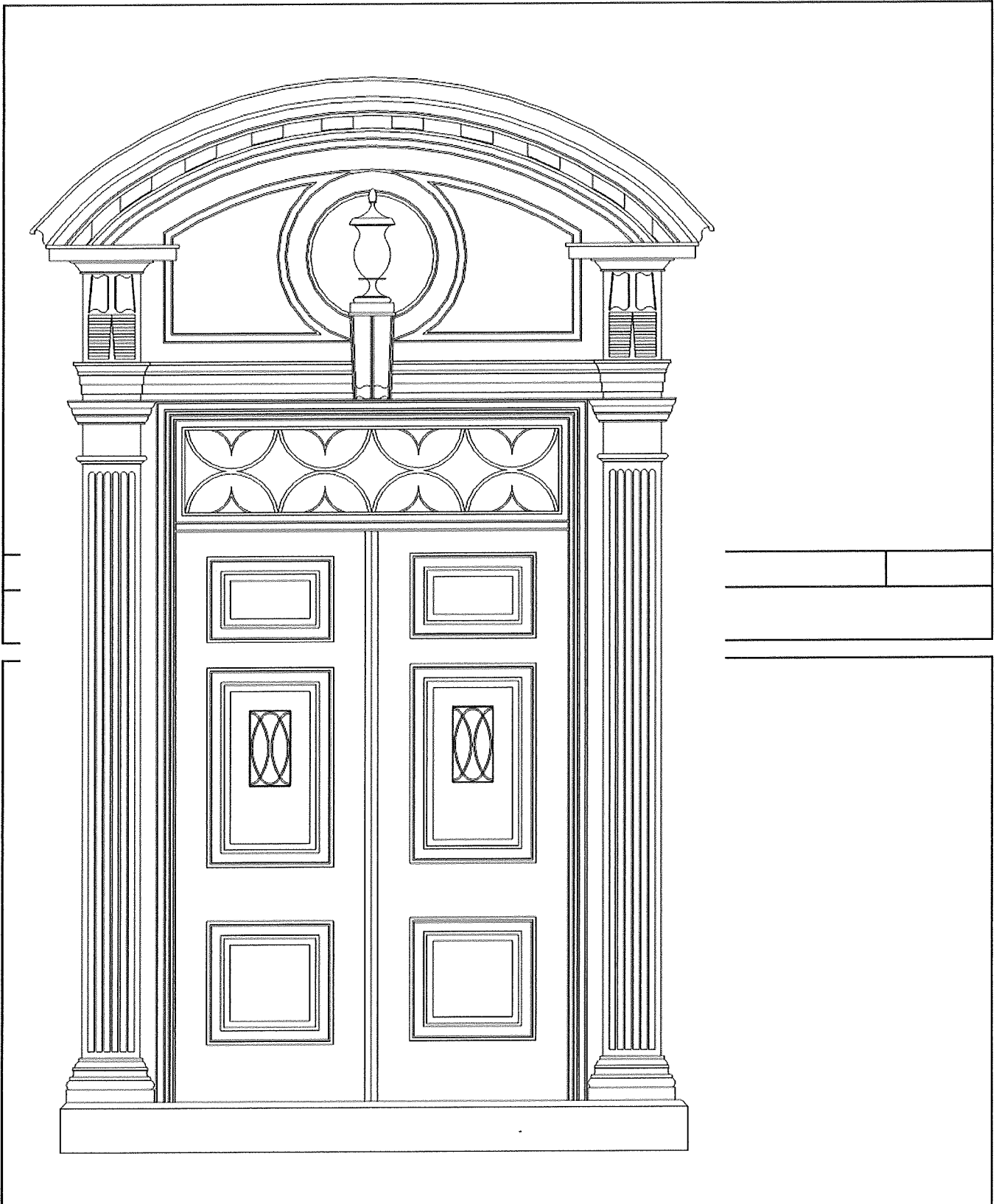
Left Side of Curved Entry Hood



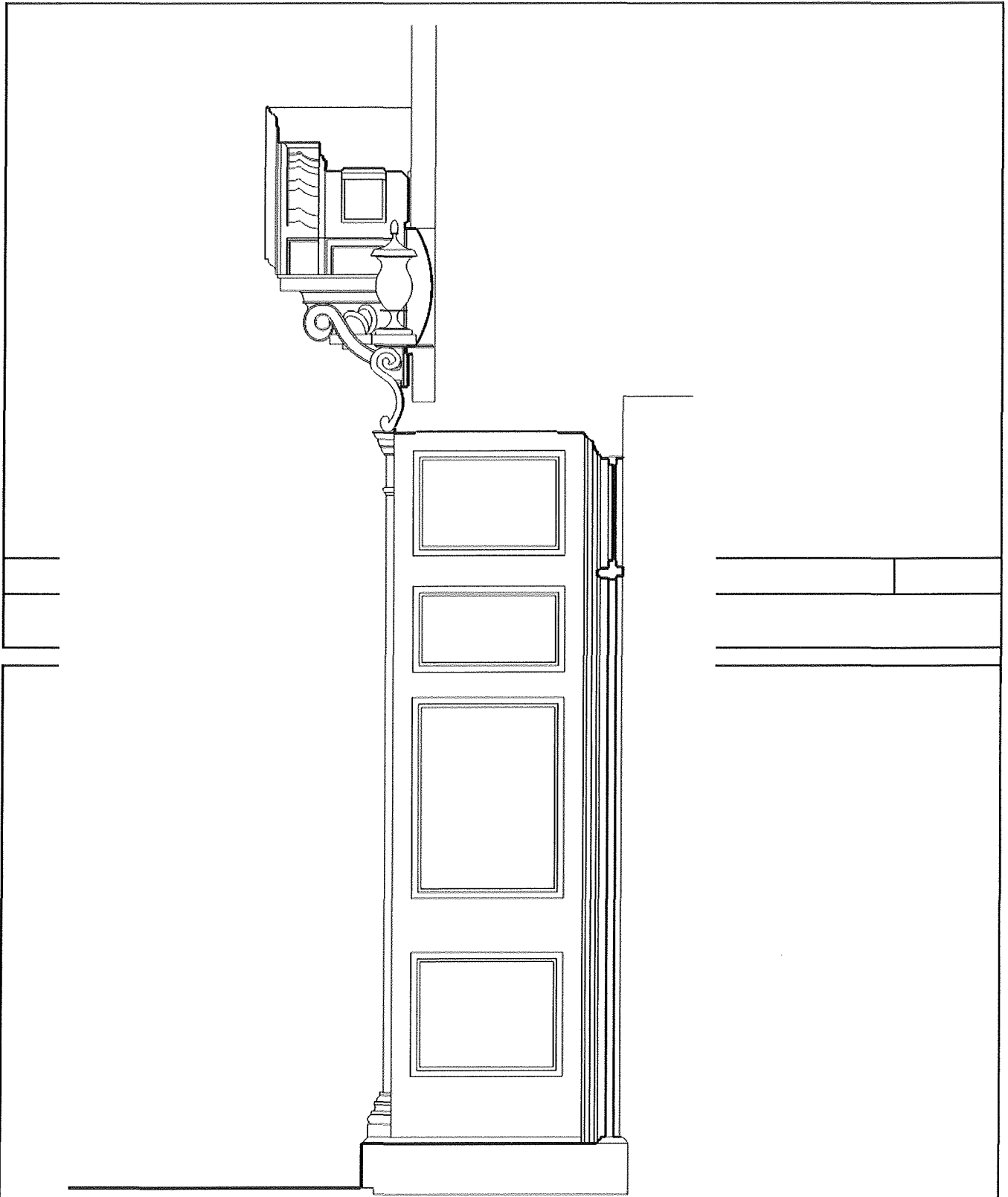
Copper Roof Hood

D-06

Entry Hood



Architectural Drawing of Door Entry Elevation



Architectural Drawing of Door Entry Section



Missing Downspout

M-01



Broken Fire Alarm Beacon

M-02



Crack in Stone Lintel above Window Type B-3

M-03



Blocked Vitrious Clay Drain Conduit

M-04



Deterioration of Sidewalk

M-05



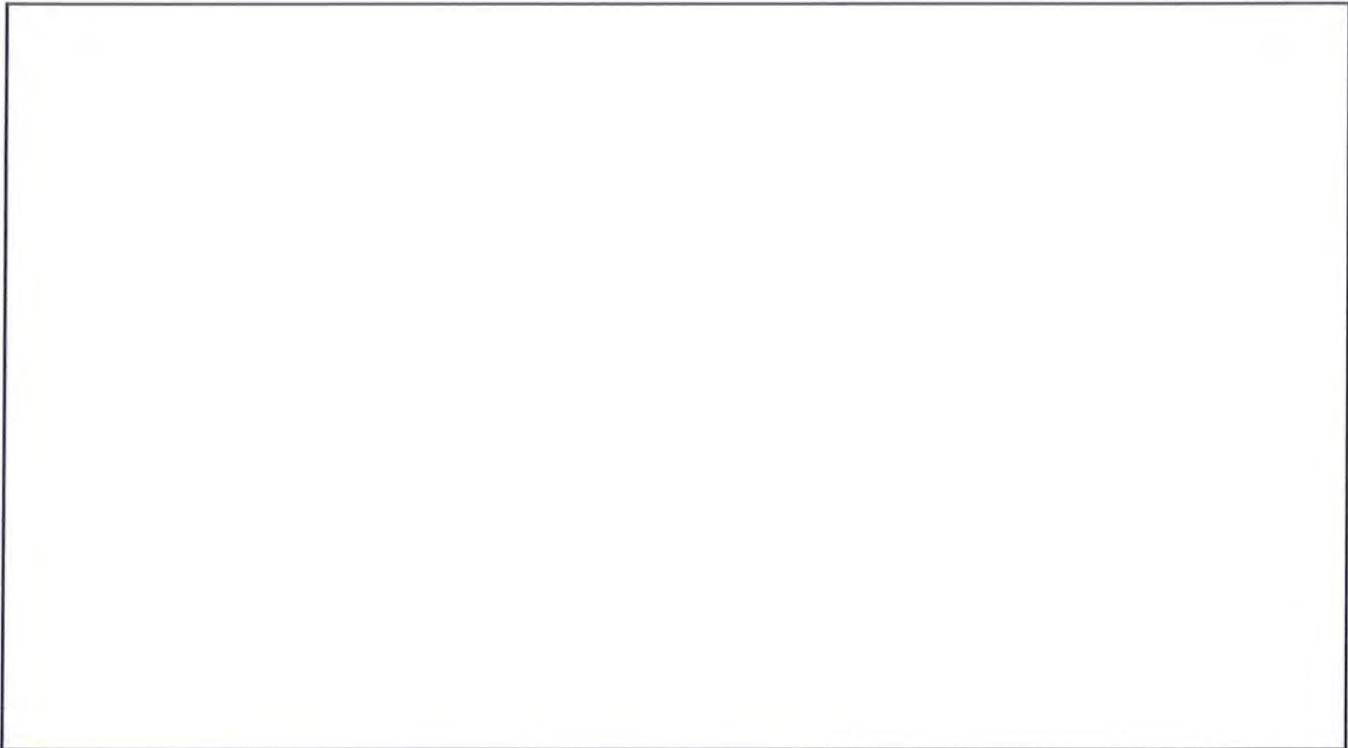
Deterioration of Concrete

M-



Handicap Accessible Ramp

HP-01



Building Envelope Study
Newton Health Department Building
Newton, MA

Storm window -operable

I-15