

**APPENDIX II – SCHEDULE, STORM WINDOW DETAILS WINDOW DETAILS**

---

II-01 ..... Window Schedule/Survey of Conditions  
II-02 ..... Storm Window Detail – Operable  
II-03 ..... Storm Window Detail – Fixed

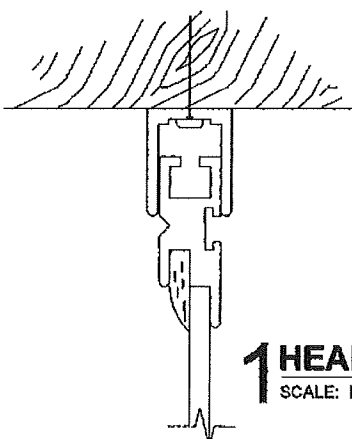
### Window Schedule/Survey of Conditions

Window #	Type	Mat.	Approx. Size (W x H)	Remarks	Location
A1	DH	WD	2'-9" x 4'-9"	1, 4	South
A2	DH	WD	2'-9" x 4'-9"	1,4	South
A3	DH	WD	2'-9" x 4'-9"	1,4	South
B1	DH/FC/T	WD	9'-4" x 8'-0"	1,2,4	North
B2	DH/FC/T	WD	9'-4" x 8'-0"	1,2,4	North
C1	DH	WD	2'-6" x 5'-0"	1,4	South
C2	DH	WD	2'-6" x 5'-0"	1,4	South
C3	DH	WD	2'-6" x 5'-0"	1,4	South
B3	DH/FC/T	WD	10'-0" x 9'-0"	1,4	West
C4	DH(3)	WD	2'-6" x 5'-0"	1,4	West
C5	DH	WD	2'-6" x 5'-0"	1,4	East
C6	DH	WD	2'-6" x 5'-0"	1,4	East
B4	DH/FC	WD	8'-8" x 6'-0"	1,4	South
E1	DH	WD	1'-0" x 4'-0"	1,4	South
F	DH (2)	WD	2'-9" x 4'-0"	1,4	South
A4	DH	WD	2'-9" x 4'-9"	1,4	South
A5	DH	WD	2'-9" x 4'-9"	1,4	South
A6	DH	WD	2'-9" x 4'-9"	1,4	South
A7	DH (2)	WD	2'-9" x 4'-9"	1,4	East
A8	DH	WD	2'-9" x 4'-9"	1,4	East
C7	DH	WD	2'-6" x 5'-0"	1,4	North
C8	DH	WD	2'-6" x 5'-0"	1,4	North
G2	BSMT	STL	2'-9" x 12"	1,4	South
G3	BSMT	STL	2'-9" x 12"	1,4	South
G4	BSMT	STL	2'-9" x 12"	1,4	1,4

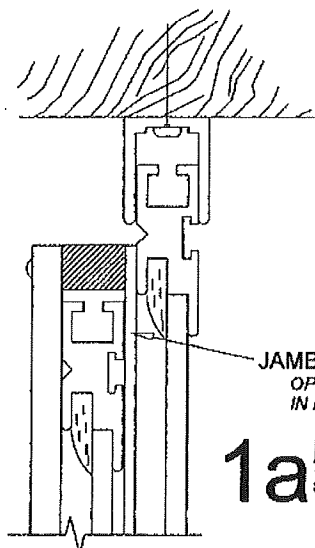
1. Paint Peeling
2. Sill Rotted
3. Glazing Cracked or missing.
4. Glazing Compound Loose or Missing
5. Window not Operable

DH = Double Hung  
 FC = Fixed Casement  
 T = Transom  
 BSMT = Basement

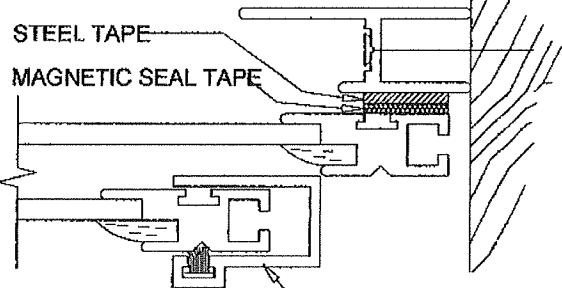
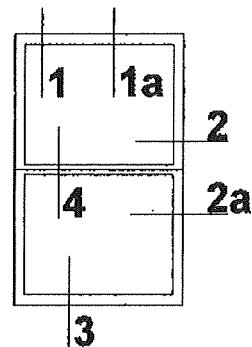
### Window Schedule/Survey of Conditions



**1 HEAD DETAIL**  
SCALE: FULL



**1a HEAD DETAIL**  
SCALE: FULL

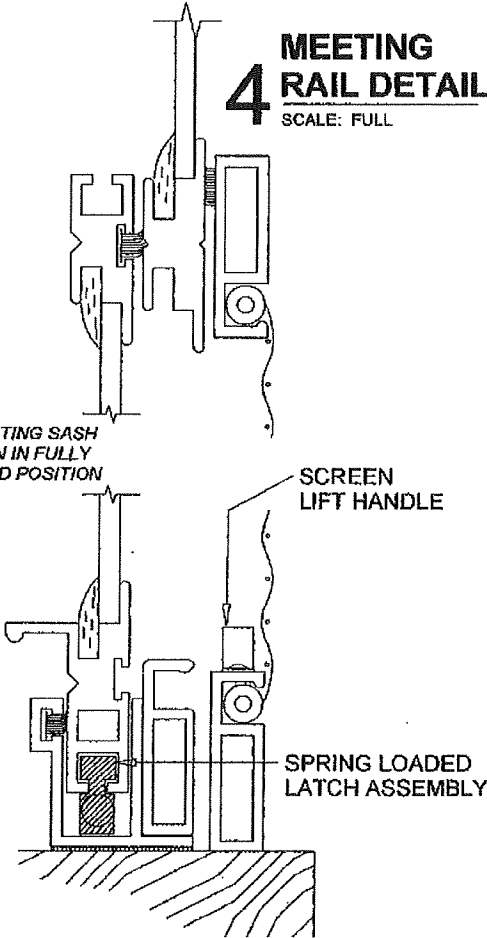


**2 JAMB DETAIL**  
SCALE: FULL

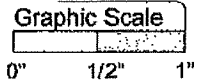
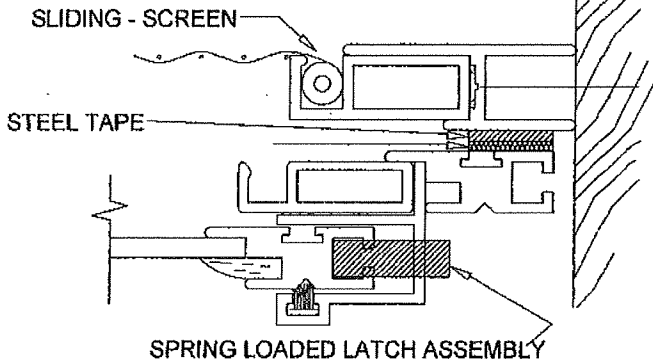
**2a JAMB DETAIL**  
SCALE: FULL

**4 MEETING RAIL DETAIL**  
SCALE: FULL

OPERATING SASH SHOWN IN FULLY CLOSED POSITION



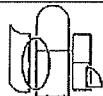
**3 SILL DETAIL**  
SCALE: FULL



PRODUCT  
MAGNETIC ONE LITE, OPERATING MOL-OP  
WITH SCREEN

DWG. NO.

**M-5**



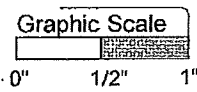
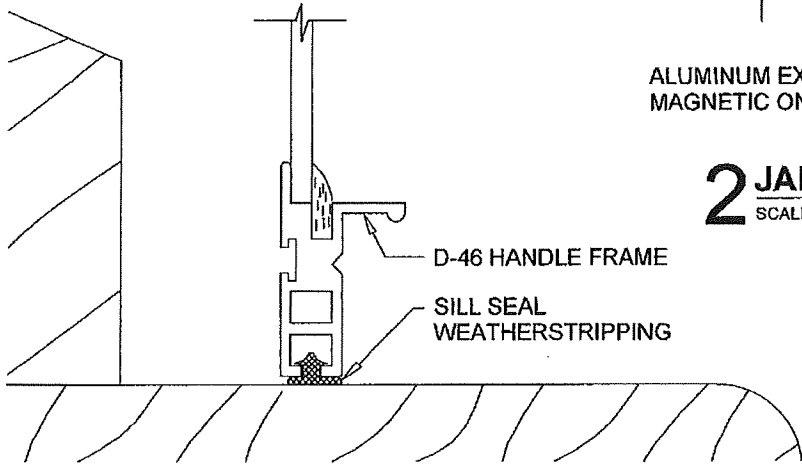
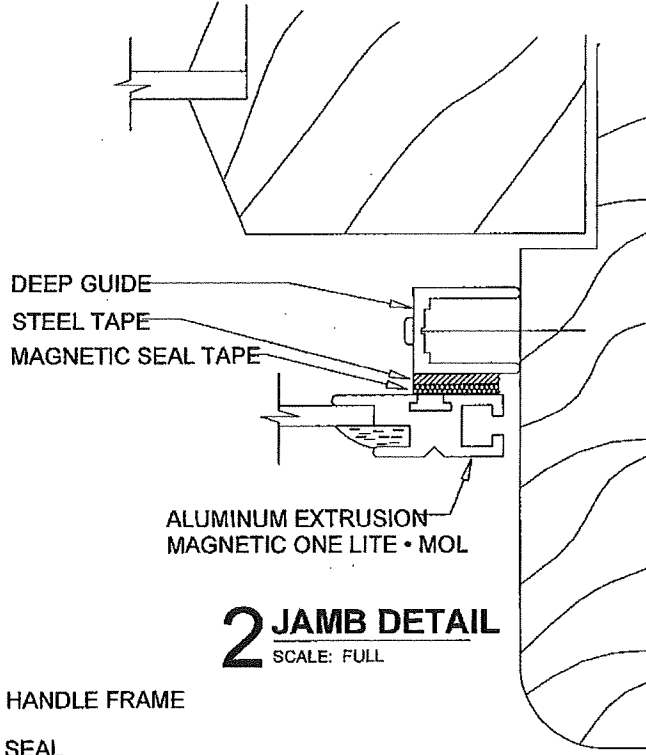
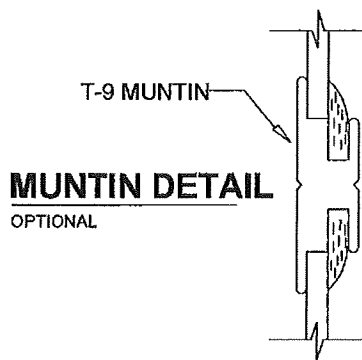
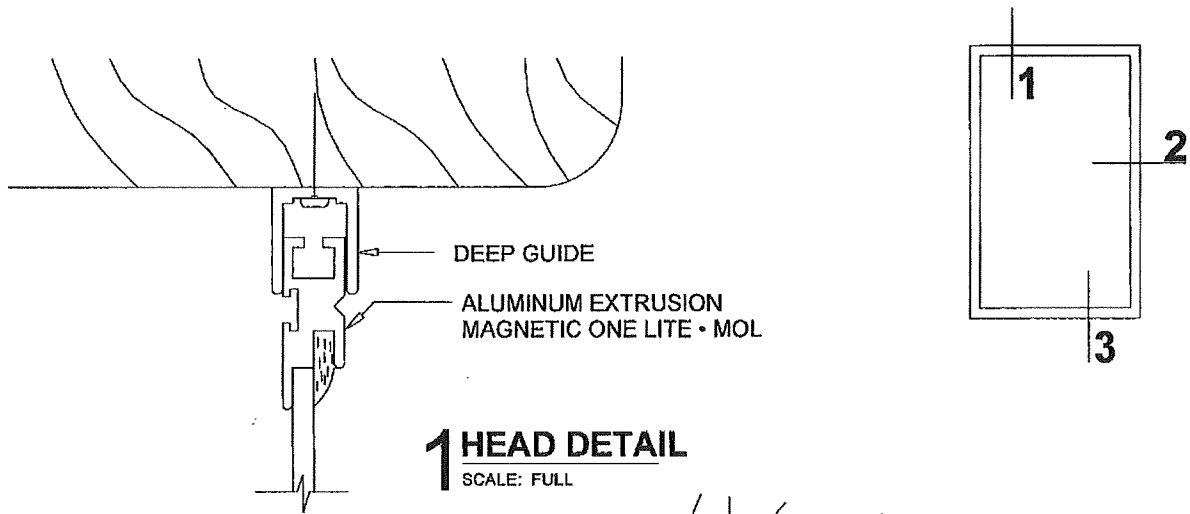
**Allied Window  
Performance Panels™**

11111 CANAL ROAD • CINCINNATI, OH 45241 • PH: 800-445-5411, 513-559-1212 • FAX: 513-559-1883 • www.alliedwindow.com • info@alliedwindow.com

Building Envelope Study  
Newton Health Department Building  
Newton, MA

Storm window -operable

II-02



NOTE: MAGNETIC SCREEN AVAILABLE

PRODUCT  
MAGNETIC ONE LITE • MOL  
MOUNT TO CHANNEL

DWG. NO.  
**M-2**

**Allied Window**  
Performance Panels™

11111 CANAL ROAD • CINCINNATI, OH 45241 • PH: 800-445-5411, 513-559-1212 • FAX: 513-559-1883 • www.alliedwindow.com • info@alliedwindow.com

Building Envelope Study  
Newton Health Department Building  
Newton, MA

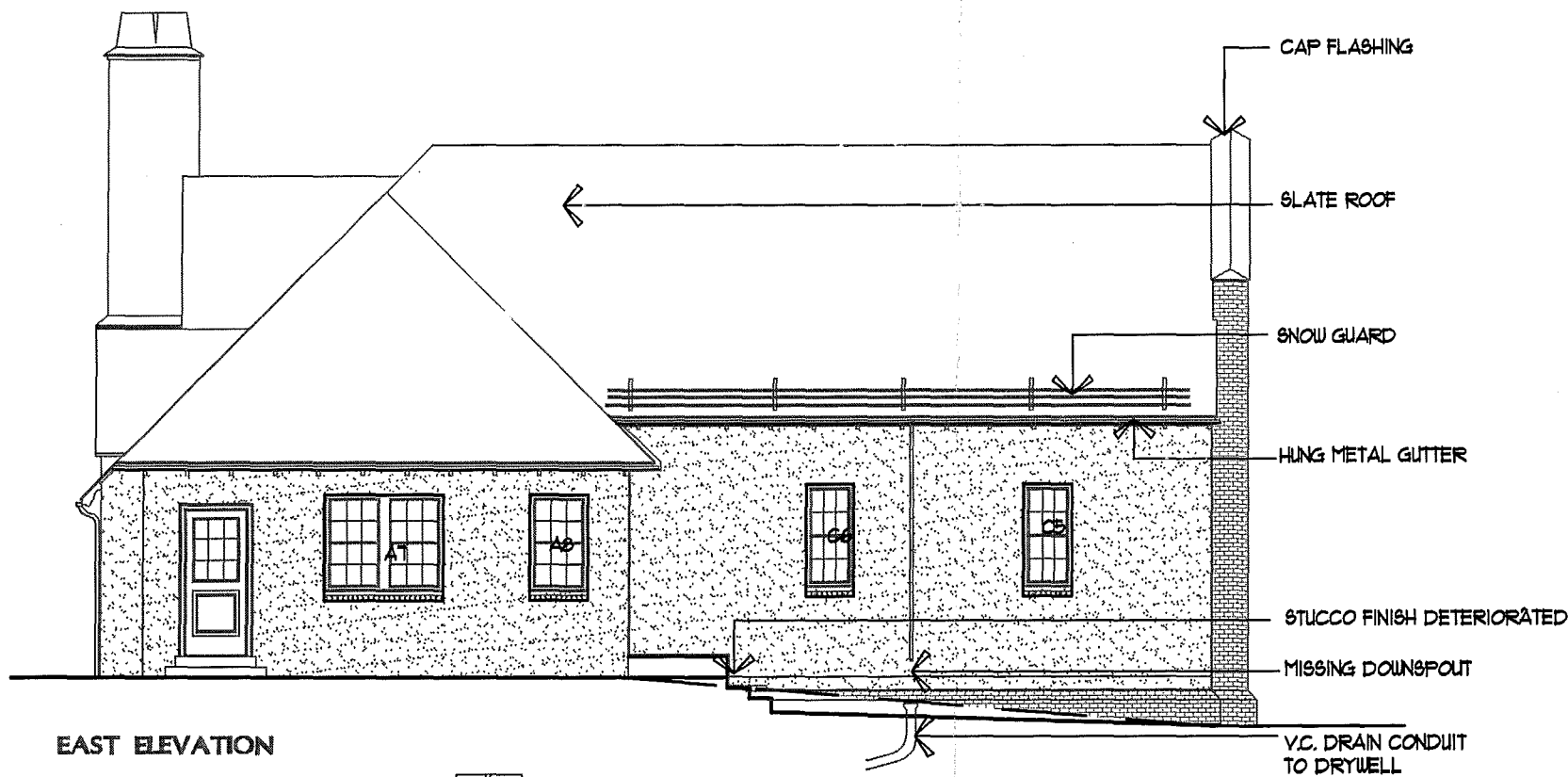
Storm window - Fixed

II-03

Building Envelope Evaluation  
Newton Health Department Building  
Newton, MA

**APPENDIX III – MARKED-UP ELEVATIONS AND PLANS**

---



EAST ELEVATION

SEE SHEET I-II FOR DETAIL

METAL CAP FLASHING

SLATE ROOF

HUNG METAL GUTTERS

STUCCO FINISH

BRICK SOLDIER COURSE

STONE WATER TABLE

BRICK BASE



WEST ELEVATION

CSS ARCHITECTS INC

**CSS** 107 Audubon Road  
Building Two, Suite 300  
Wellesley, MA 01980  
css@cssarchitects.com

BUILDING ENVELOPE EVALUATION  
NEWTON HEALTH DEPARTMENT BUILDING  
1294 CENTRE STREET  
NEWTON, MASSACHUSETTS

Title : BUILDING ELEVATIONS

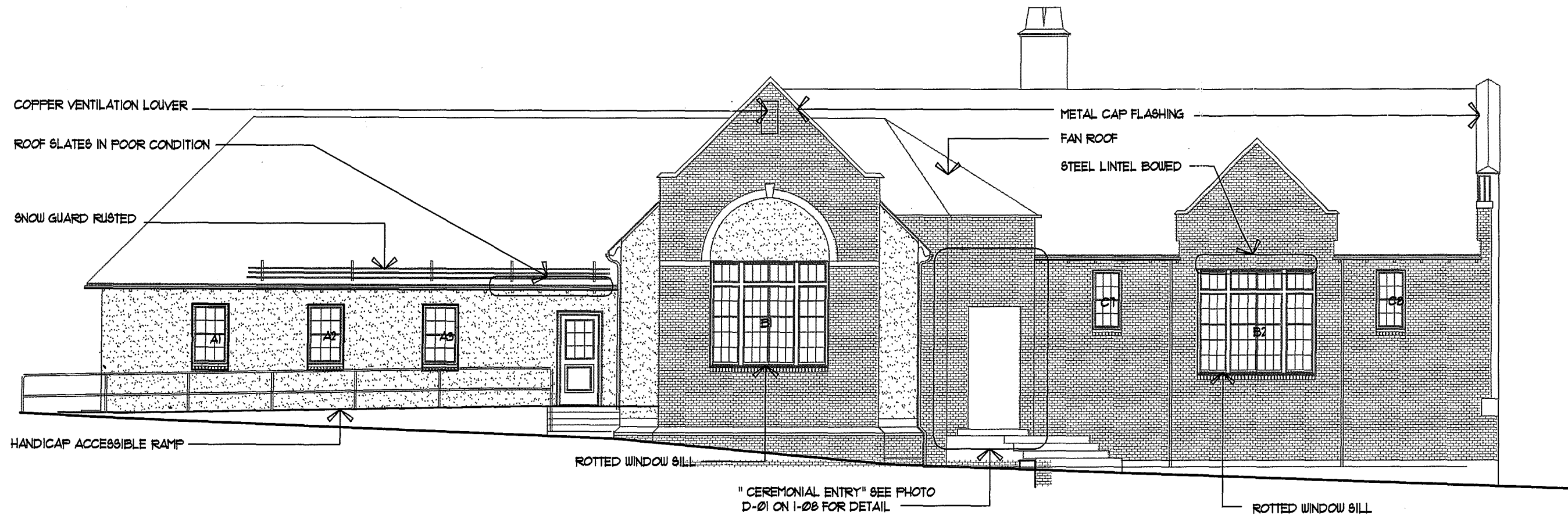
Date : 3/6/2008

Drawn :

Checked :

Project # : 1062  
Scale : 1/8" = 1'-0"

**A1**



SOUTH ELEVATION

CSS ARCHITECTS INC

**CSS** 107 Audubon Road  
 Building Two, Suite 300  
 Waltham, MA 01980  
 css@cassarchitects.com

BUILDING ENVELOPE EVALUATION  
 NEWTON HEALTH DEPARTMENT BUILDING  
 1294 CENTRE STREET  
 NEWTON, MASSACHUSETTS

Title : BUILDING ELEVATION

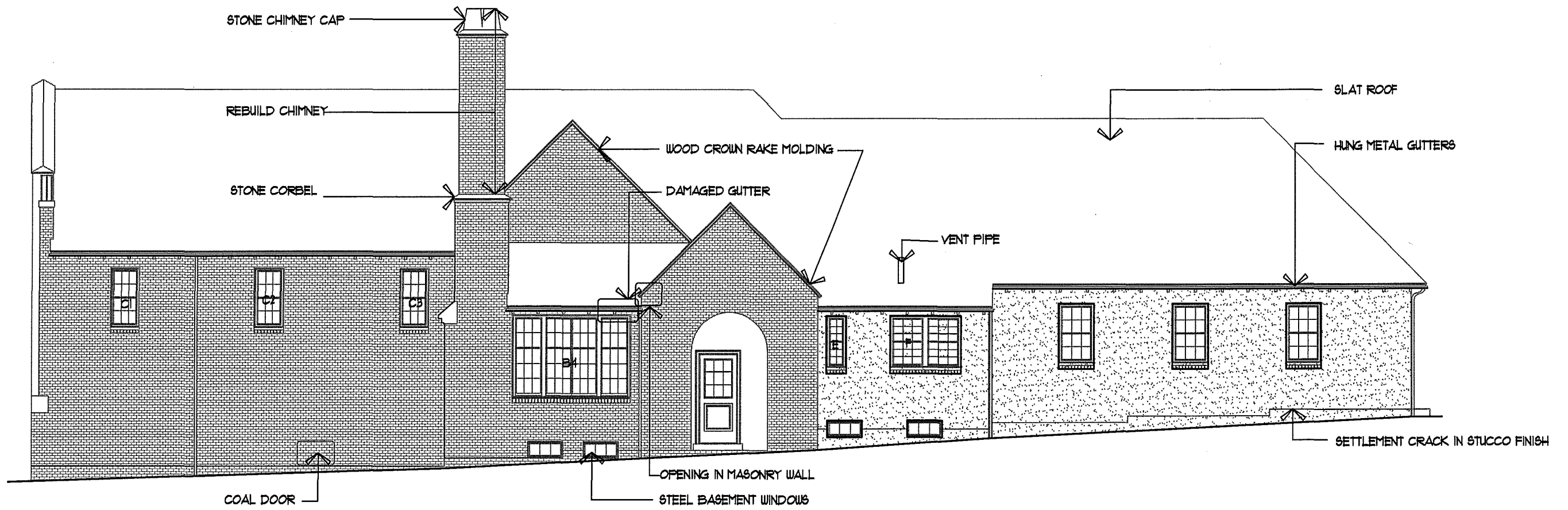
Date : 3/6/2008

Drawn :

Checked :

Project # : 1062  
 Scale : 1/8" = 1'-0"

**A2**



SOUTH ELEVATION

CSS ARCHITECTS INC

**CSS** 107 Audubon Road  
 Building Two, Suite 200  
 Wakefield, MA 01880  
 css@cssarchitects.com

BUILDING ENVELOPE EVALUATION  
 NEWTON HEALTH DEPARTMENT BUILDING  
 1294 CENTRE STREET  
 NEWTON, MASSACHUSETTS

Title : ELEVATION

Date : 3/6/2008

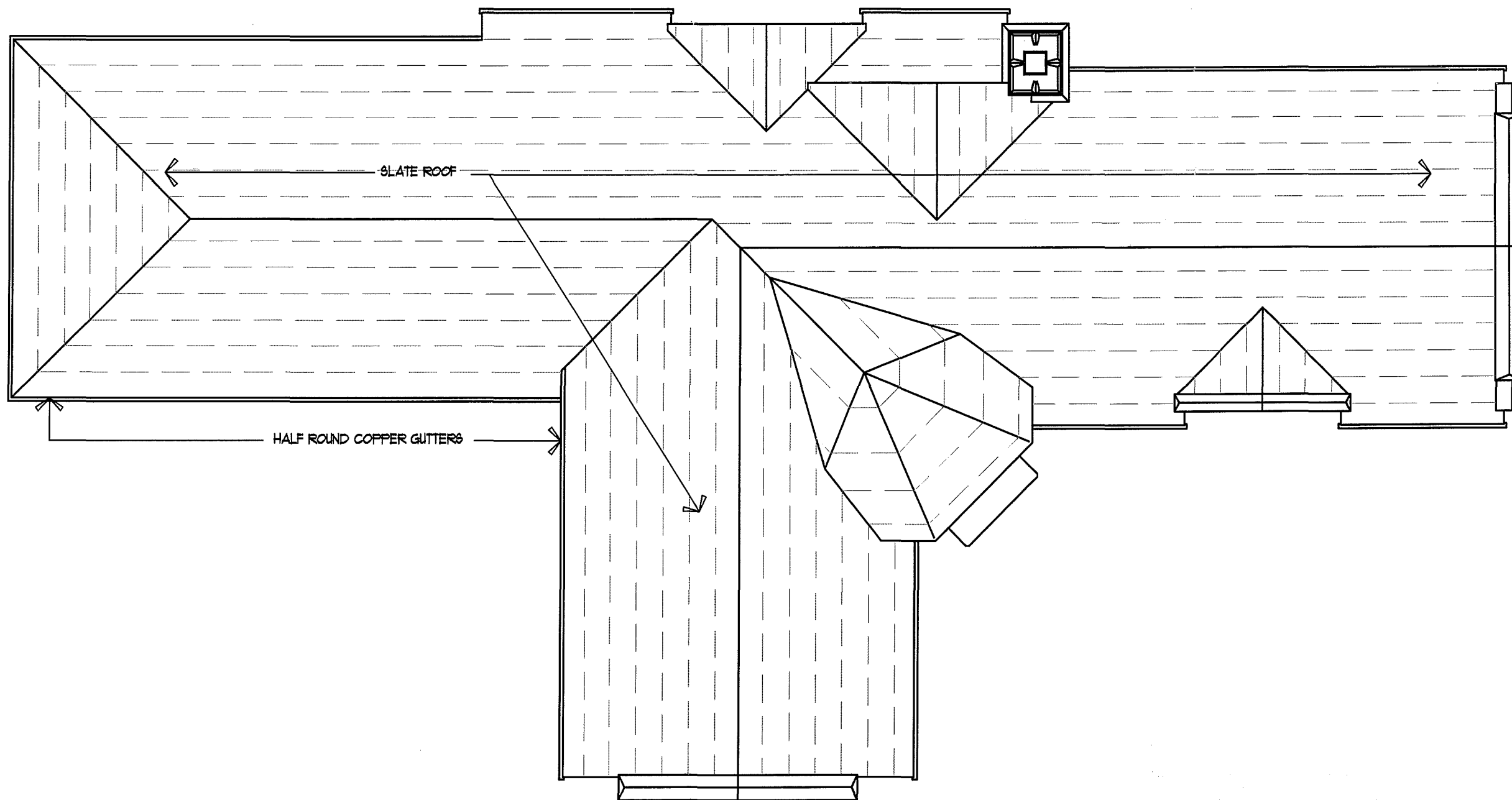
Drawn :

Checked :

Project # : 1062  
 Scale : 1/8" = 1'-0"

**A3**





CSS ARCHITECTS INC

**CSS** 107 Audubon Road  
 Building Two, Suite 300  
 Walsfield, MA 01880  
 css@cssarchitects.com

BUILDING ENVELOPE EVALUATION  
 NEWTON HEALTH DEPARTMENT BUILDING  
 1294 CENTRE STREET  
 NEWTON, MASSACHUSETTS

Title : ROOF PLAN

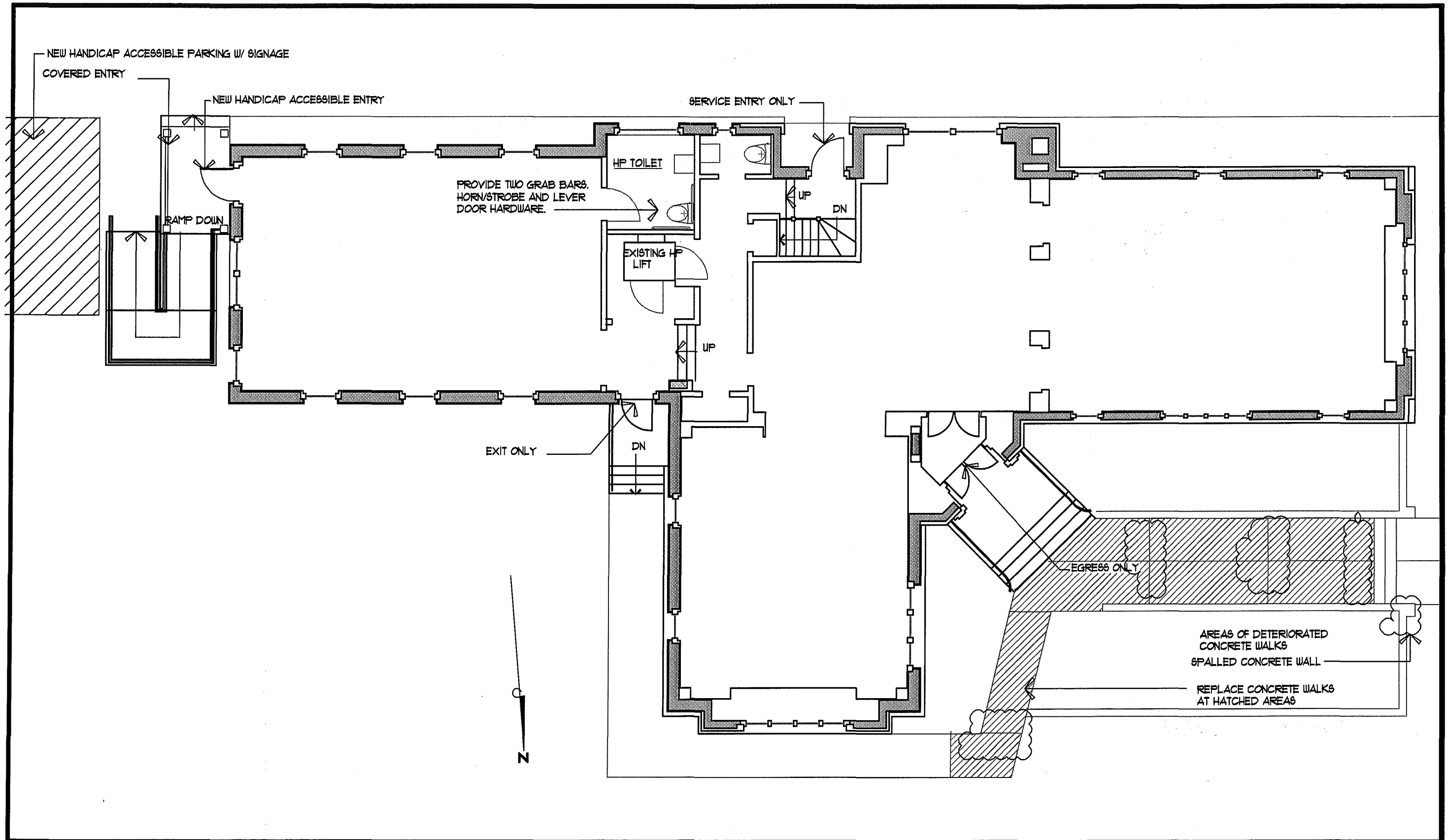
Date : 3/6/2008

Drawn :

Checked :

Project # : 1062  
 Scale : 1/8" = 1'-0"

**A4**



CSS ARCHITECTS INC

**CSS** 107 Audubon Road  
 Building Two, Suite 200  
 Watsham, MA 01880  
 css@cssarchitects.com

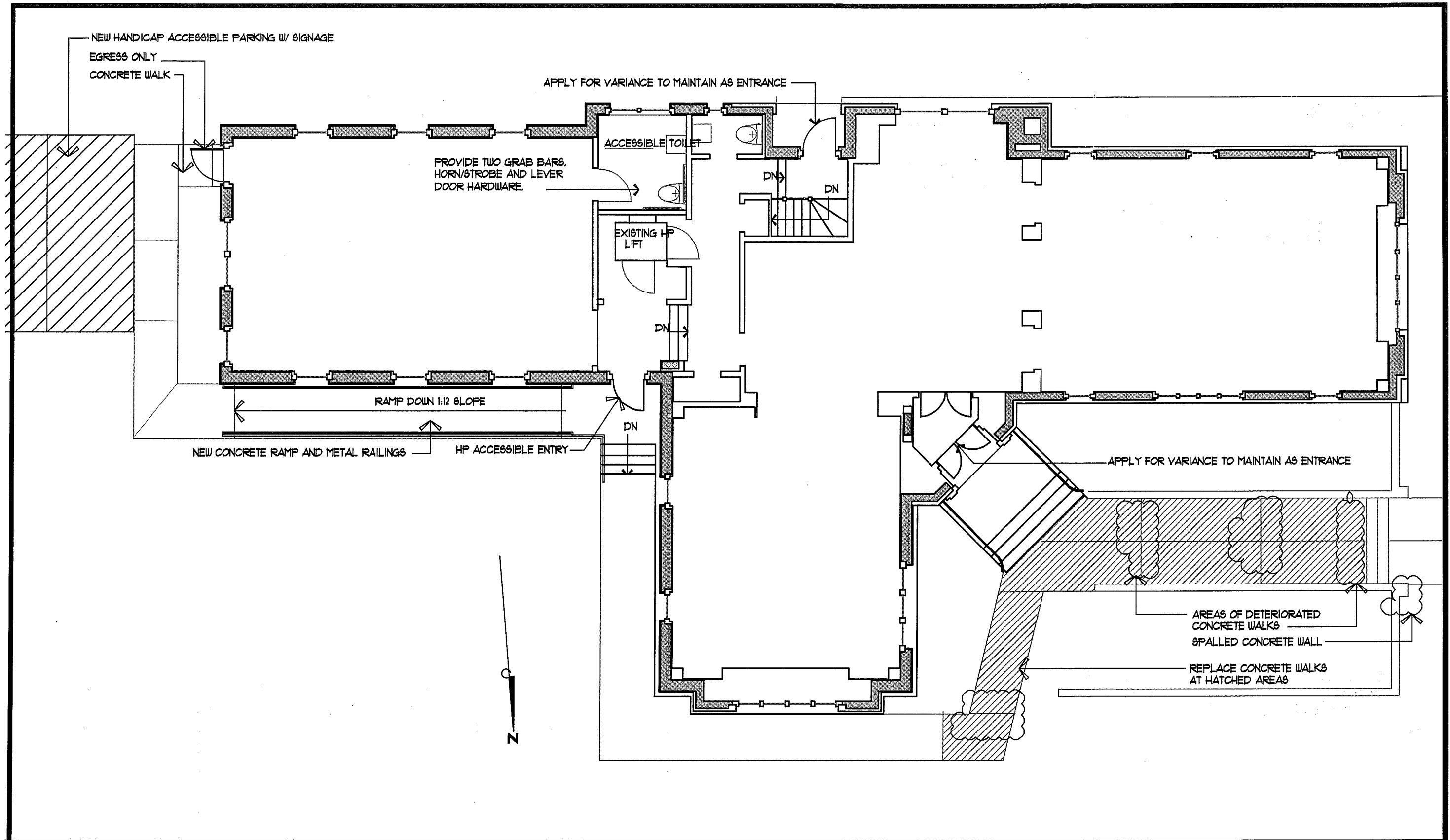
BUILDING ENVELOPE EVALUATION  
 NEWTON HEALTH DEPARTMENT BUILDING  
 1294 CENTRE STREET  
 NEWTON, MASSACHUSETTS

Title : FLOOR PLAN  
 HANDICAP ACCESSIBILITY  
 OPTION 1

Date : 3/6/2008  
 Drawn :  
 Checked :

Project # : 1062  
 Scale : 1/8" = 1'-0"

**A5**



CSS ARCHITECTS INC

**CSS** 107 Audubon Road  
Building Two, Suite 300  
Watford, MA 01880  
css@cssarchitects.com

BUILDING ENVELOPE EVALUATION  
NEWTON HEALTH DEPARTMENT BUILDING  
1294 CENTRE STREET  
NEWTON, MASSACHUSETTS

Title : FLOOR PLAN

HANDICAP ACCESSIBILITY  
OPTION 2

Date : 3/6/2008

Drawn :

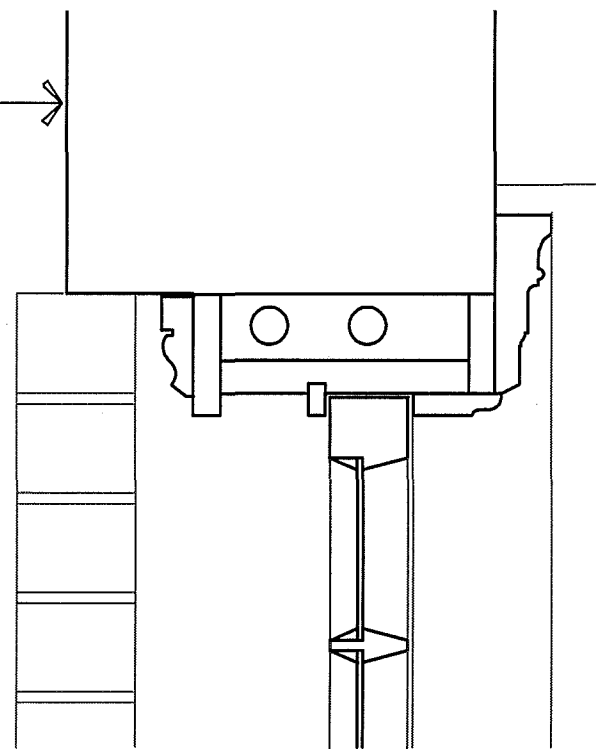
Checked :

Project # : 1062  
Scale : 1/8" = 1'-0"

**A6**

STUCCO FINISH

SEE WINDOW DETAIL 1 FOR APPLICABLE DETAILS



BRICK CLADDING

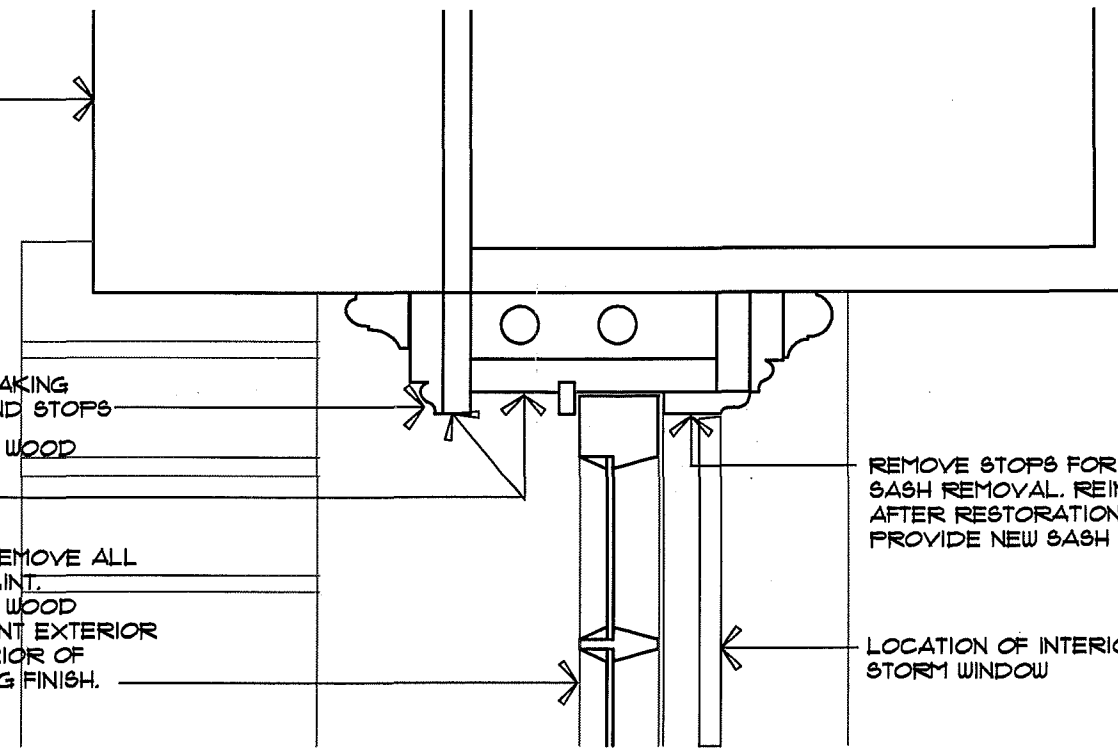
REMOVE LOOSE AND FLAKING PAINT FROM CASINGS AND STOPS

REPAIR DETERIORATED WOOD WITH EPOXY. PAINT ALL COMPONENTS.

REMOVE SASHES AND REMOVE ALL LOOSE AND FLAKING PAINT. REPAIR DETERIORATED WOOD WITH EPOXY FILLER. PAINT EXTERIOR OF SASH. REFINISH INTERIOR OF SASH TO MATCH EXISTING FINISH.

REMOVE STOPS FOR SASH REMOVAL. REINSTALL AFTER RESTORATION. PROVIDE NEW SASH CORDS.

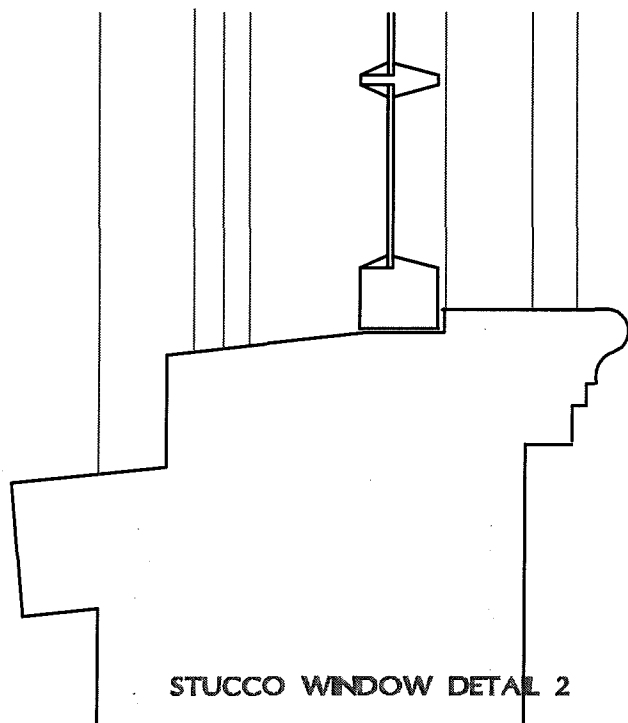
LOCATION OF INTERIOR STORM WINDOW



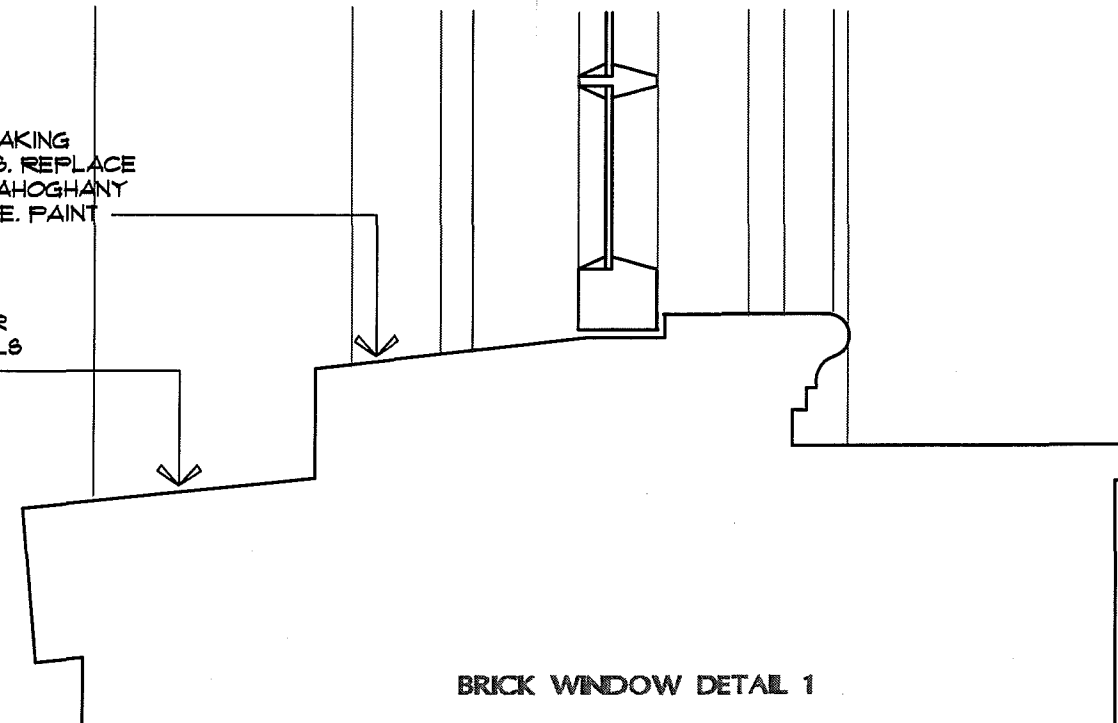
REMOVE LOOSE AND FLAKING PAINT FROM WOOD SILLS. REPLACE ROTTED SILLS W/ NEW MAHOUGHANY SILLS TO MATCH PROFILE. PAINT

REMOVE LOOSE MORTAR AT BRICK ROWLOCK SILLS AND REPOINT.

STUCCO WINDOW DETAIL 2



BRICK WINDOW DETAIL 1



CSS ARCHITECTS INC

**CSS** 107 Audubon Road  
Building Two, Suite 300  
Watfield, MA 01890  
css@cssarchitects.com

BUILDING ENVELOPE EVALUATION  
NEWTON HEALTH DEPARTMENT BUILDING  
1294 CENTRE STREET SOUTH ELEVATION  
NEWTON, MASSACHUSETTS

Title : WINDOW DETAILS

Date : 3/6/2008

Drawn :

Checked :

Project # : 1062  
Scale : 3/8" = 1'-0"

**A7**

**THE THOMPSON & LICHTNER COMPANY, INC.**

**CSS Architects, Inc.  
Wakefield, Massachusetts**

NOTE: The Newton CP website groups the following elevations for convenience with other floor plans from the final report. Please note that these elevations originally appeared at the end of the consultant's section of the printed final report.

**EVALUATION OF BUILDING ENVELOPE**

**Newton Health Department Building  
Newton, Massachusetts**

**APPENDIX B**

**MARKED-UP ELEVATION DRAWINGS**

**KEY TO OBSERVATIONS**

- A Hairline cracks in stucco
- B Crack in stucco
- C Defective mortar joints in brick wall
- D Bowed brick wall area
- E Metal inserts in walls
- F Vertical crack in brick masonry
- G Spalled brick
- H Loose brick
- I Horizontal crack in chimney cap
- J Loose and peeling stucco surface



**NORTH ELEVATION**

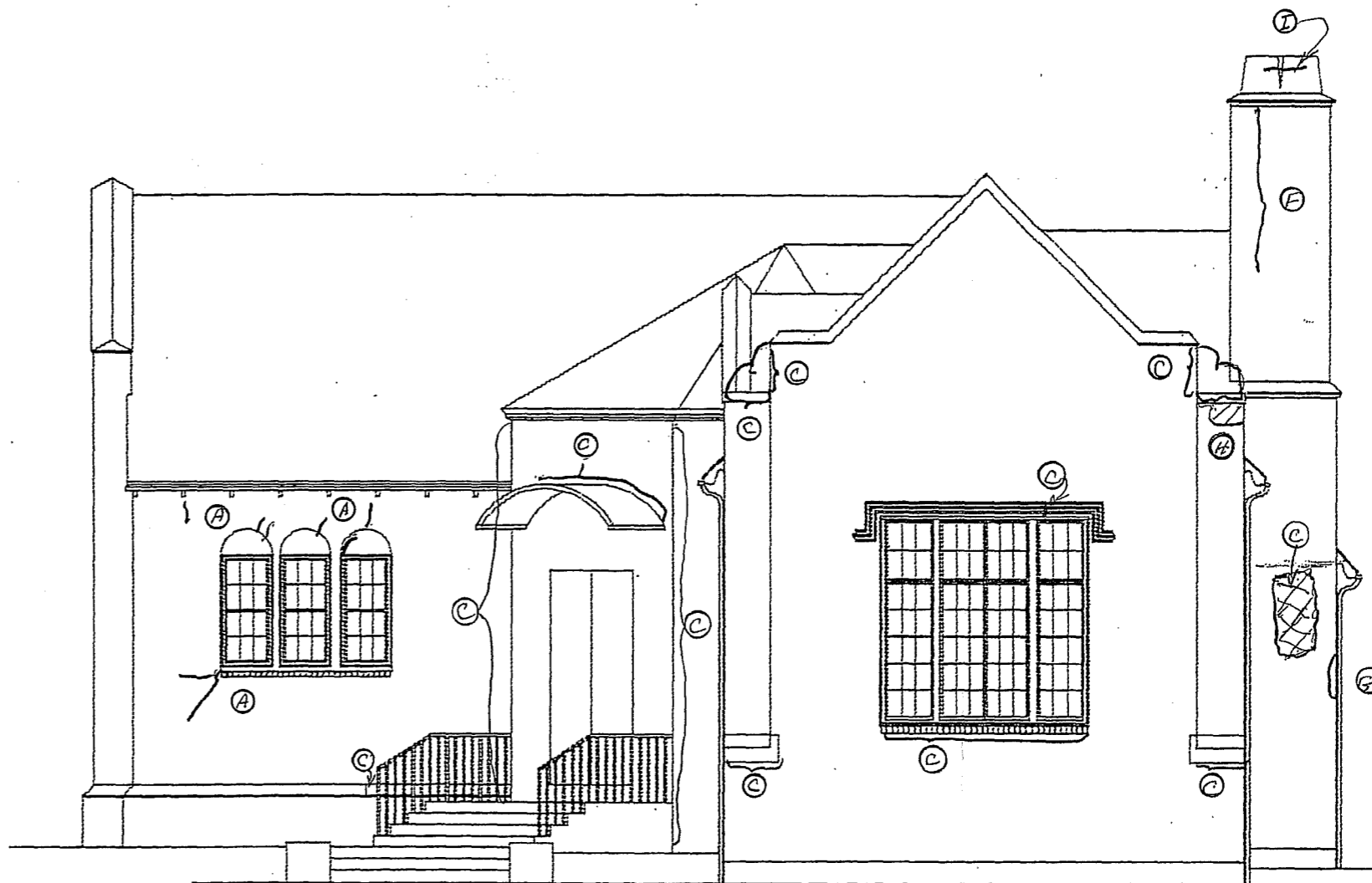
**THE THOMPSON & LICHTNER COMPANY, INC.**

111 First Street, Cambridge, Massachusetts  
 Tel (617) 492-2111 Fax (617) 492-5448

**BUILDING ENVELOPE EVALUATION  
 NEWTON HEALTH DEPARTMENT BUILDING  
 NEWTON, MASSACHUSETTS**

**B-1**

September 28, 2007



**WEST ELEVATION**

**THE THOMPSON & LICHTNER COMPANY, INC.**

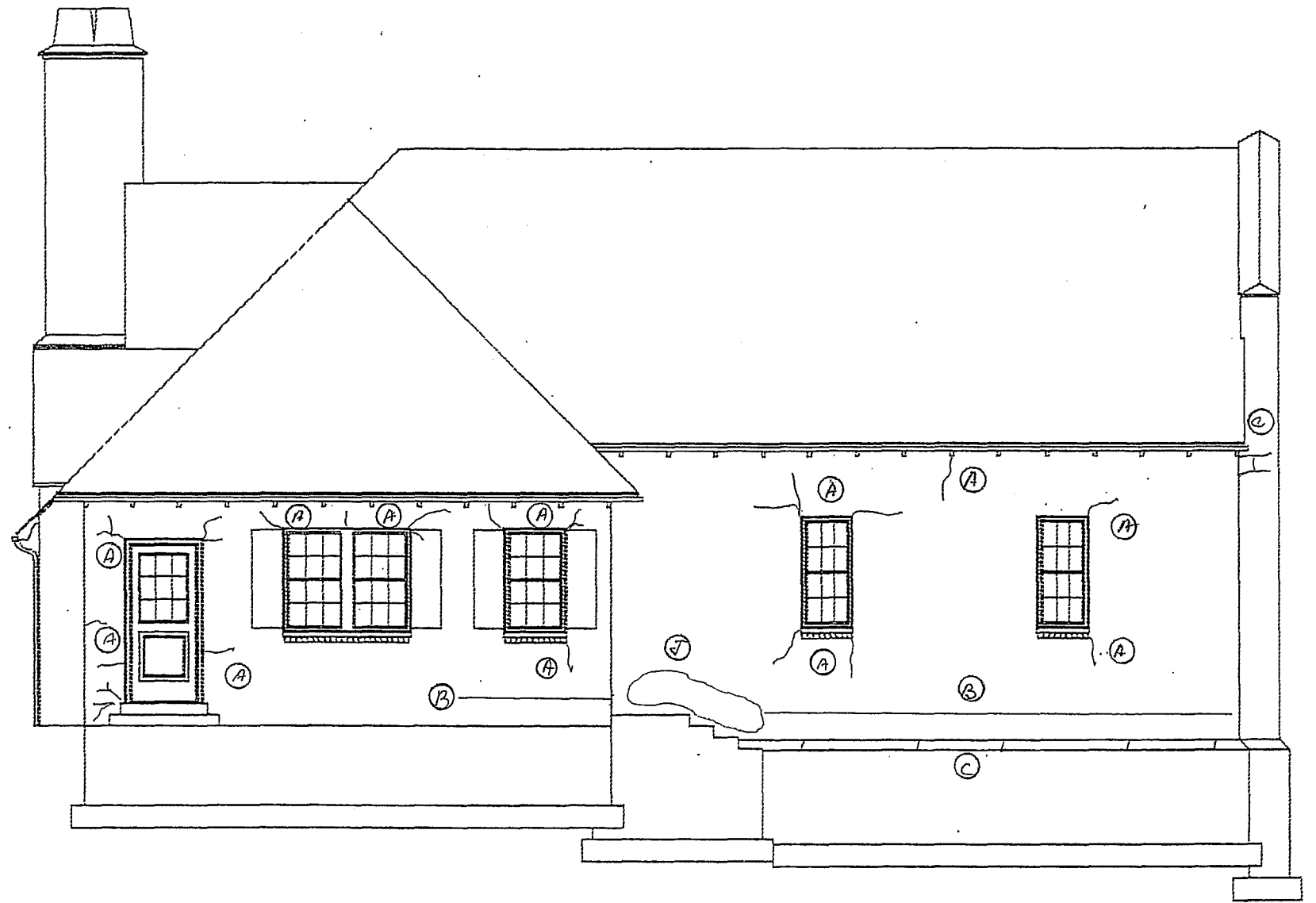
111 First Street, Cambridge, Massachusetts  
Tel (617) 492-2111 Fax (617) 492-5448

**BUILDING ENVELOPE EVALUATION  
NEWTON HEALTH DEPARTMENT BUILDING  
NEWTON, MASSACHUSETTS**

**B-2**

September 28, 2007





**EAST ELEVATION**

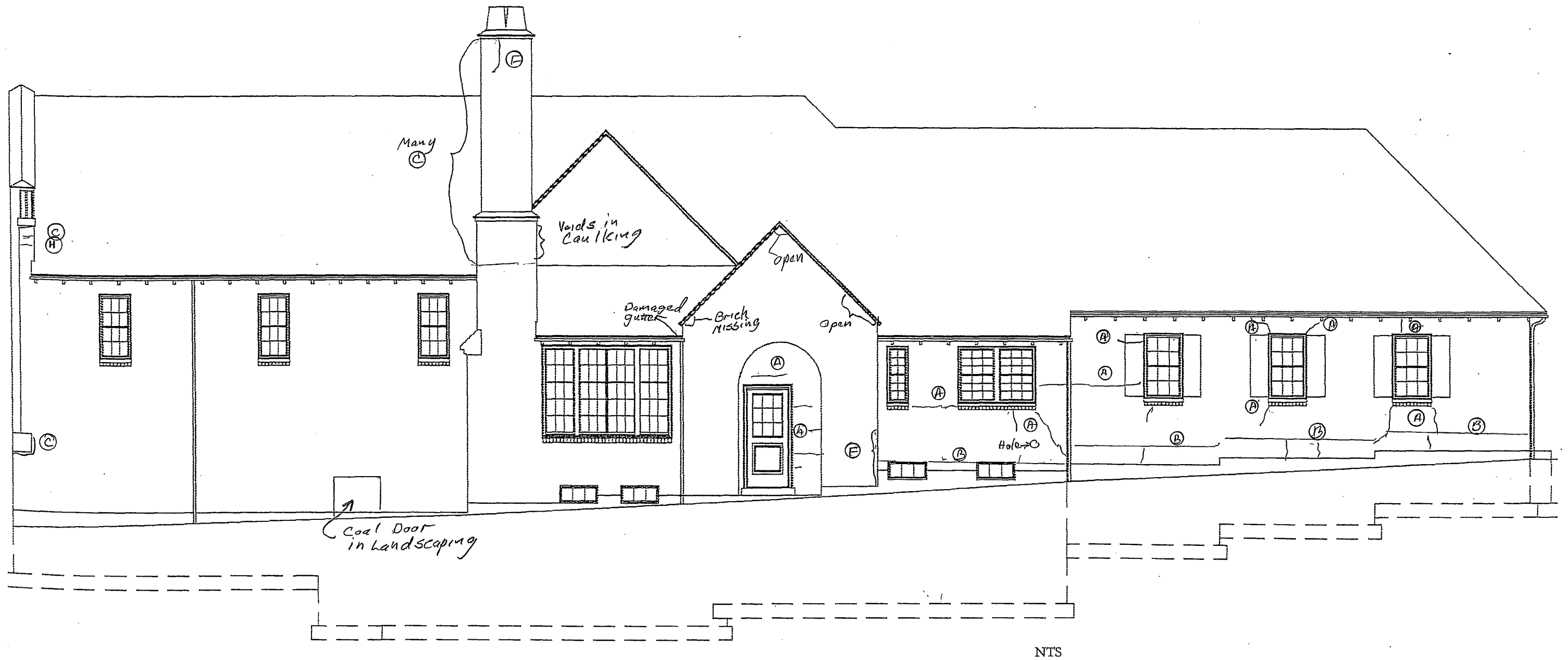
**THE THOMPSON & LICHTNER COMPANY, INC.**  
111 First Street, Cambridge, Massachusetts  
Tel (617) 492-2111 Fax (617) 492-5448

**BUILDING ENVELOPE EVALUATION  
NEWTON HEALTH DEPARTMENT BUILDING  
NEWTON, MASSACHUSETTS**

**B-3**

September 28, 2007

# SOUTH ELEVATION



THE THOMPSON & LICHTNER COMPANY, INC.

111 First Street, Cambridge, Massachusetts  
Tel (617) 492-2111 Fax (617) 492-5448

BUILDING ENVELOPE EVALUATION  
NEWTON HEALTH DEPARTMENTMENT BUILDING  
NEWTON, MASSACHUSETTS

B-4

September 28, 2007