

**THE THOMPSON & LICHTNER COMPANY, INC.**

**CSS Architects, Inc.  
Wakefield, Massachusetts**

**EVALUATION OF BUILDING ENVELOPE**

**Newton Health Department Building  
Newton, Massachusetts**

**APPENDIX A**

**PHOTOGRAPHS**



↑ PHOTOGRAPH 1

General view of south elevation.



↑ PHOTOGRAPH 2

Partial view of west elevation.







↑ PHOTOGRAPH 3

View in attic of efflorescence on the wall of the chimney and water stains on the roof decking, walls, and framing.



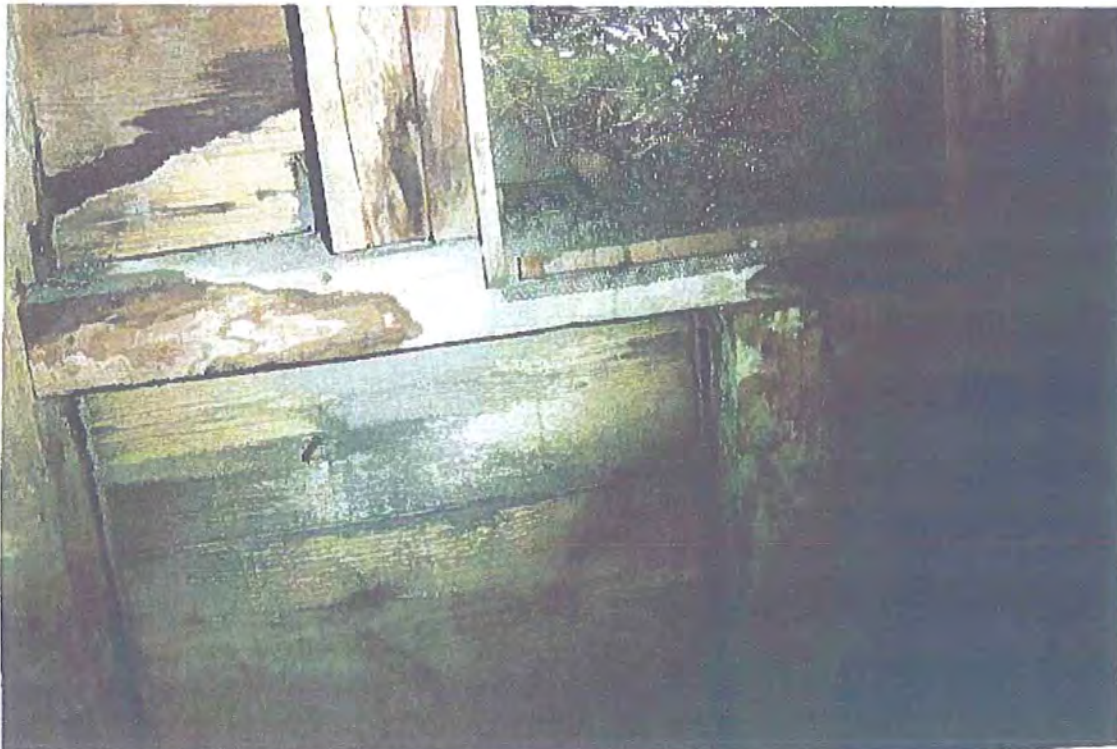
↑ PHOTOGRAPH 4

View in attic of water staining on the roof decking along the valley and hip of the roof above the northwest entrance.



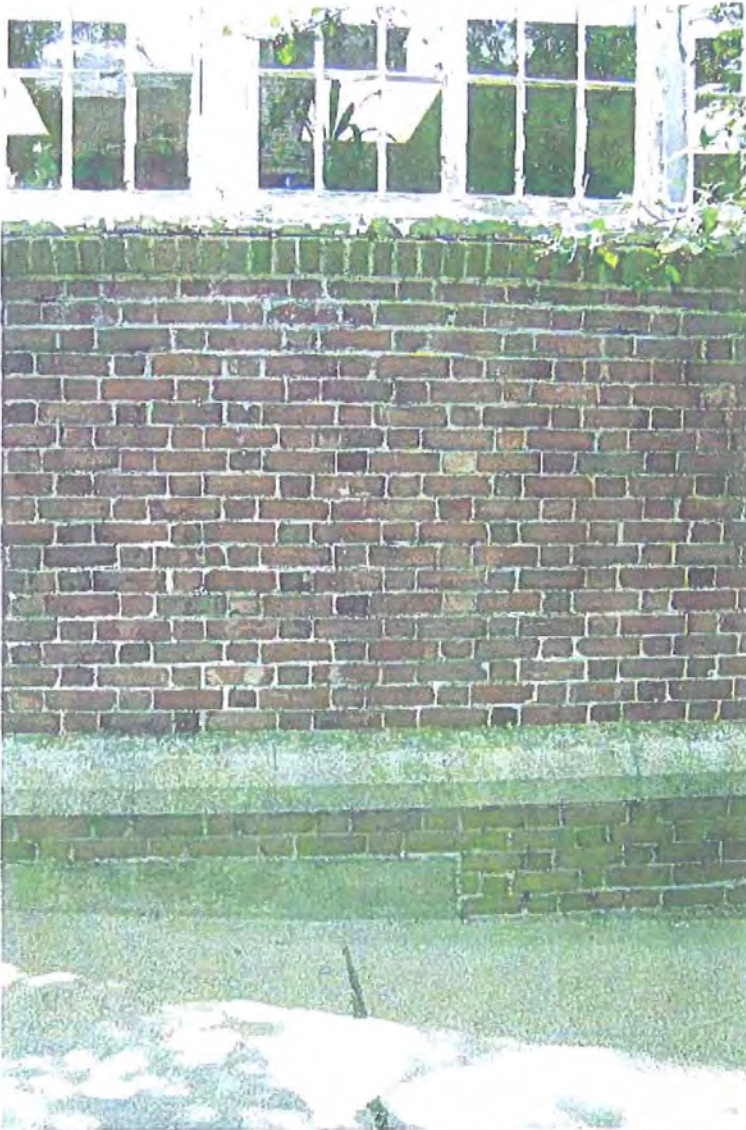
↑ PHOTOGRAPH 5

View of west end wall with discoloration of the mastic on the terra cotta back-up wall due to water penetration.



↑ PHOTOGRAPH 6

View of water staining on the boarding and framing around the bottom of the attic vent.



← PHOTOGRAPH 7

View of deteriorated mortar joints at a rowlock in the wall below a window sill.

↓ PHOTOGRAPH 8

View of rust scale on a lintel and cracks in the mortar joints in the brick wall beyond the window opening at the lintel.





↑ PHOTOGRAPH 9

View of cracking and deteriorated mortar joints below a scrolled capstone on top of the west end wall.



↑ PHOTOGRAPH 10

View of missing mortar between the brick wall and copper roofing where the roofing enters the brick masonry wall.





↑ PHOTOGRAPH 11

View of mortar patched brick and the bottom of the coal chute door covered by landscaping mulch.



↑ PHOTOGRAPH 12

View of missing mortar above step flashing, and holes in the step flashing.



↑ PHOTOGRAPH 13

View of a small spall in the stucco at ground level.



↑ PHOTOGRAPH 14

View of deteriorated stucco above the sidewalk steps on the west elevation.



↑ PHOTOGRAPH 15

View of holes in the copper barrel roofing at the front entryway.



↑ PHOTOGRAPH 16

View of east-sloped roof area at the end of the east-west wing with replacement slates along the hips and cracked and broken slates with flaking surfaces in the roof field.



↑ PHOTOGRAPH 17

View of south-sloped roof area on the east half of the east-west wing, showing groups of slates with delaminating surfaces, cracked and broken slates, and an out of position slate at the hip.



↑ PHOTOGRAPH 18

View of a section of the slate roofs between dormers on the south elevation, showing broken and dislodged slate and deteriorated copper flashing with pin holes.



↑ PHOTOGRAPH 19

View of the south slope on the west half of the east-west wing, showing some deteriorated and cracked slate and a rusted cap on the west end wall.



↑ PHOTOGRAPH 20

View of the west slope on the north wing, showing delaminated, cracked, broken, and missing slates.



↑ PHOTOGRAPH 21

View of delaminated and broken slates on the fan roof above the main entryway.



↑ PHOTOGRAPH 22

View of holes in the rusted cap flashing on the end of the north dormer on the west half of the east-west wing.



↑ PHOTOGRAPH 23

View of damaged end of gutter on the south elevation between the chimney and south entrance.



↑ PHOTOGRAPH 24

View of gutter along the north elevation of the east wing, including a view of unpainted wood trim and an open joint between the back of the gutter and the building.