

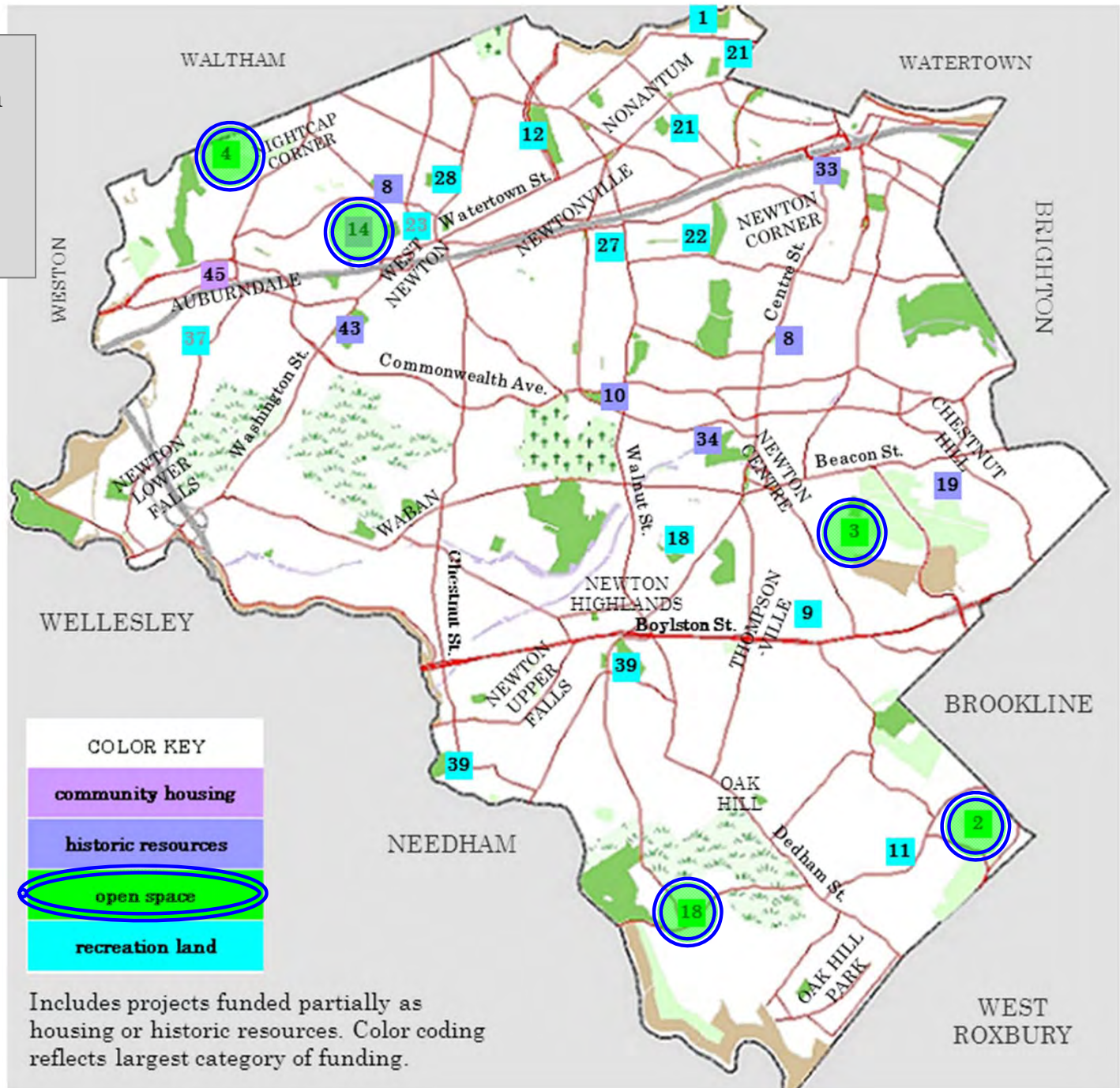
Spring 2011

Past & Potential Priorities for **OPEN SPACE & RECREATION LAND**



Newton, Massachusetts
Community Preservation Program

Newton Community
 Preservation Program
 Appropriations
 for Open Space &
 Recreation Land
 through June 2010



Includes projects funded partially as housing or historic resources. Color coding reflects largest category of funding.



**Conservation
Actions Completed
from Newton's
2003-07
*Open Space Plan***

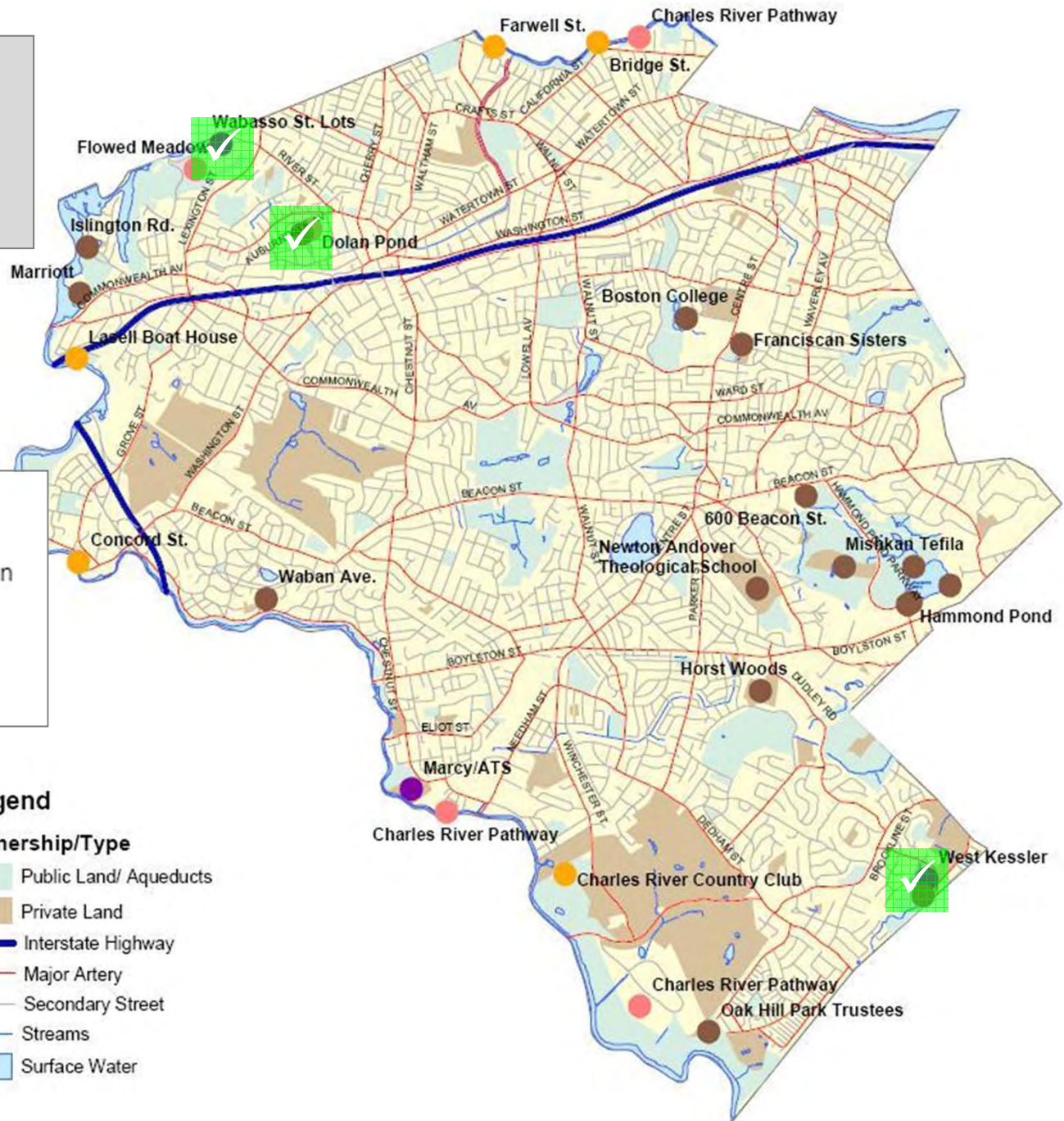
ACTIONS

- Acquisition
- Conservation Restriction
- Easement
- Improvement
- Transfer

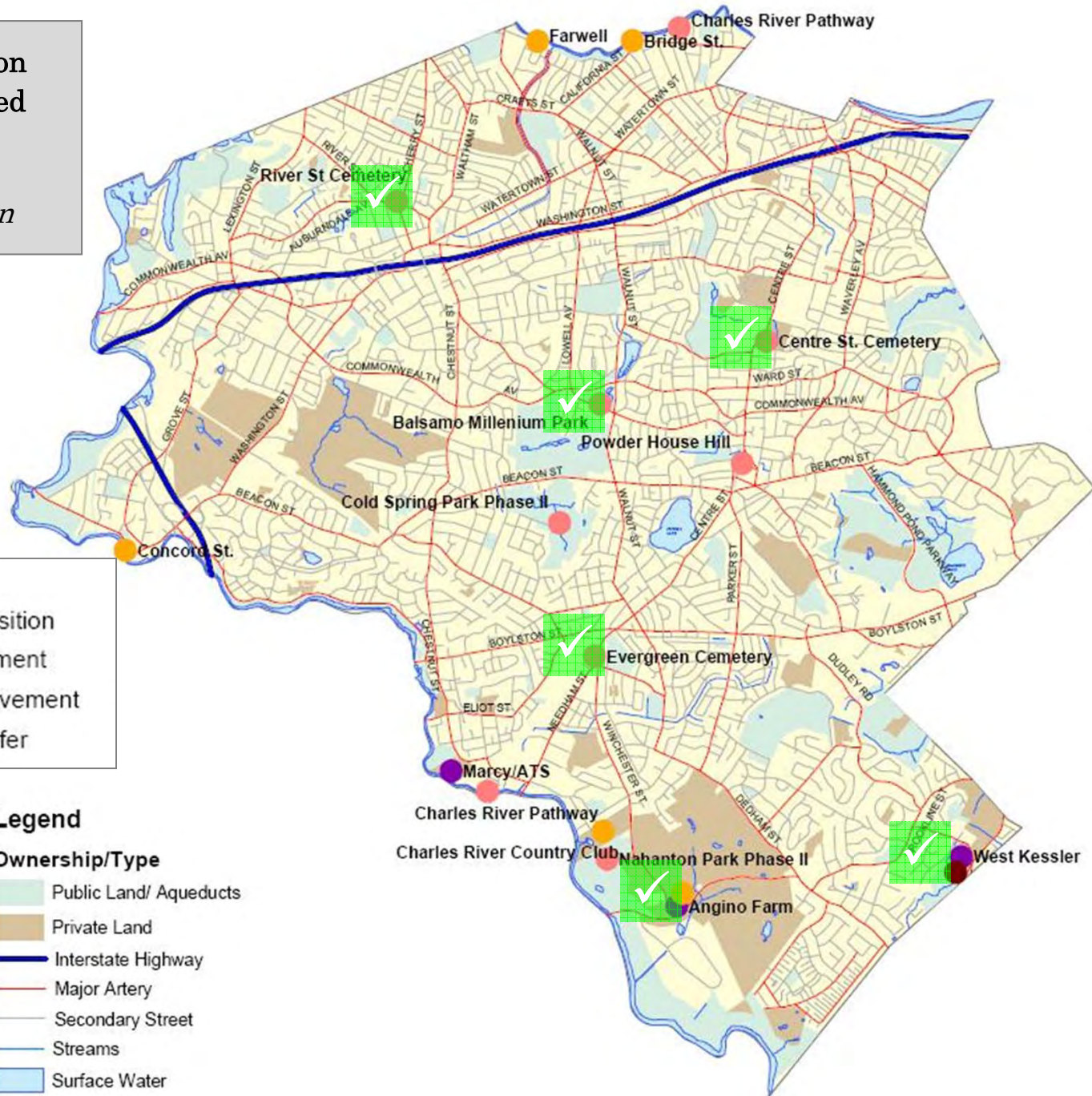
Legend

Ownership/Type

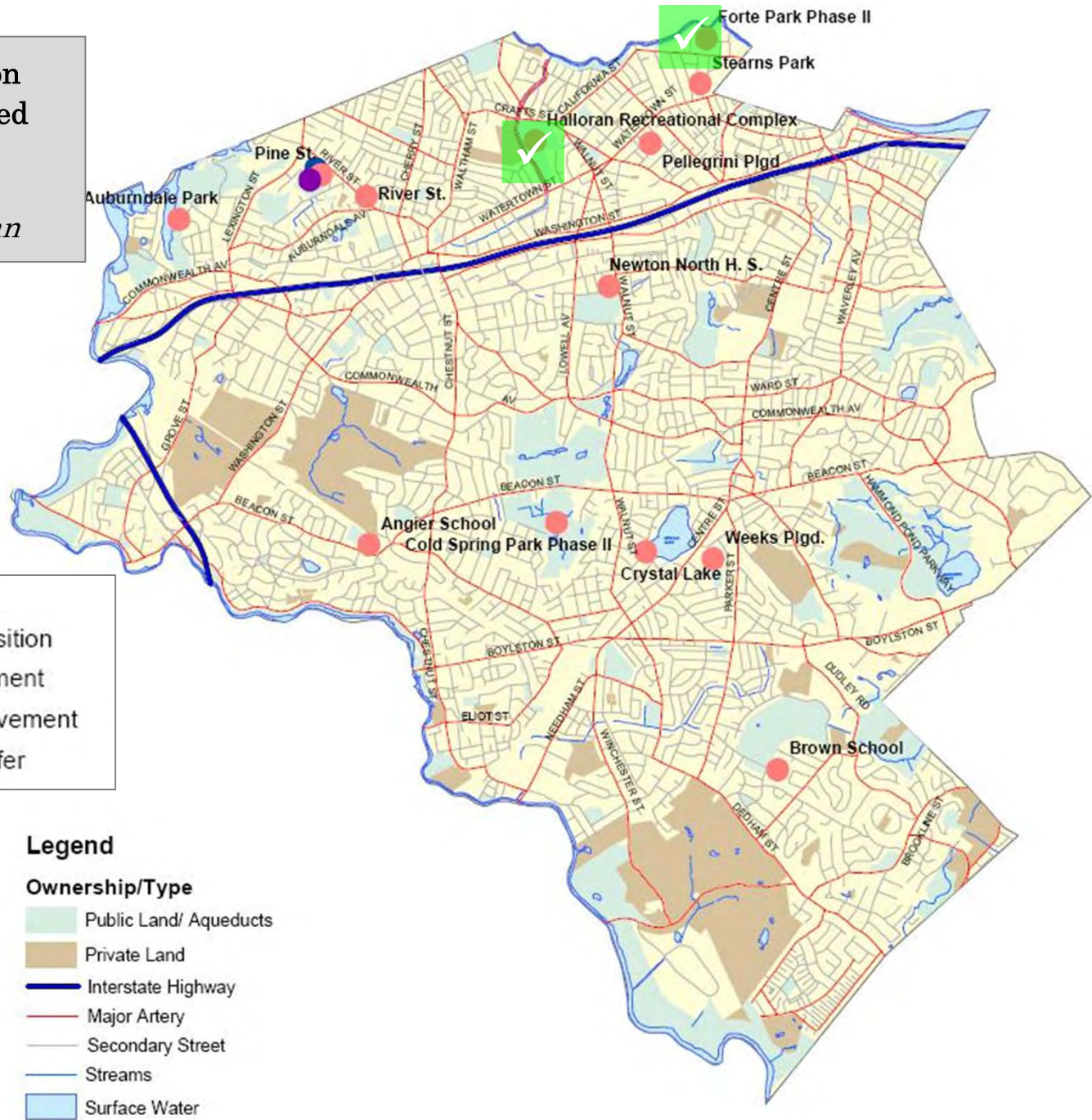
- Public Land/ Aqueducts
- Private Land
- Interstate Highway
- Major Artery
- Secondary Street
- Streams
- Surface Water



Passive Recreation
Actions Completed
from Newton's
2003-07
Open Space Plan



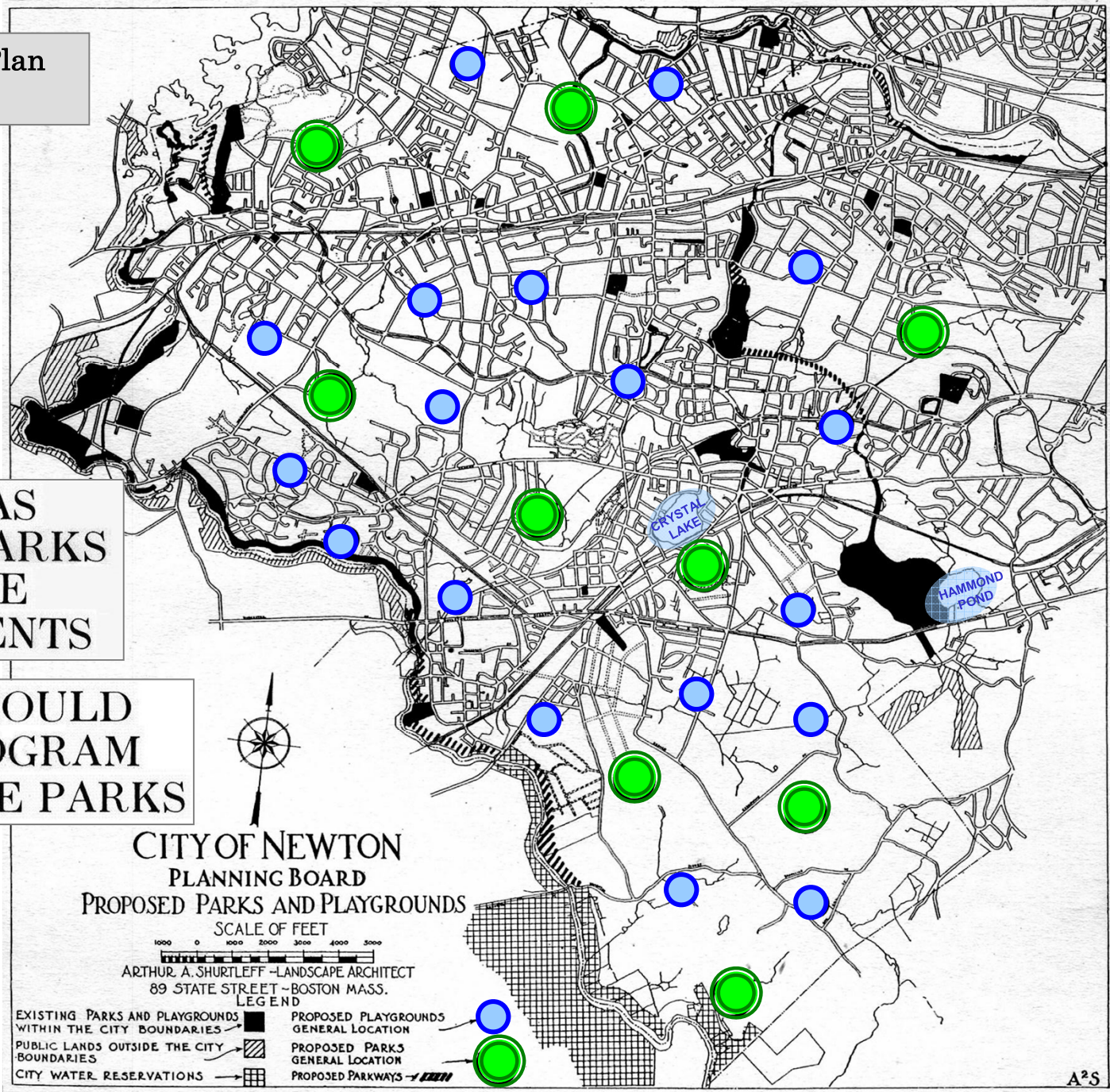
Active Recreation
Actions Completed
from Newton's
2003-07
Open Space Plan



Newton Zoning Plan
1921

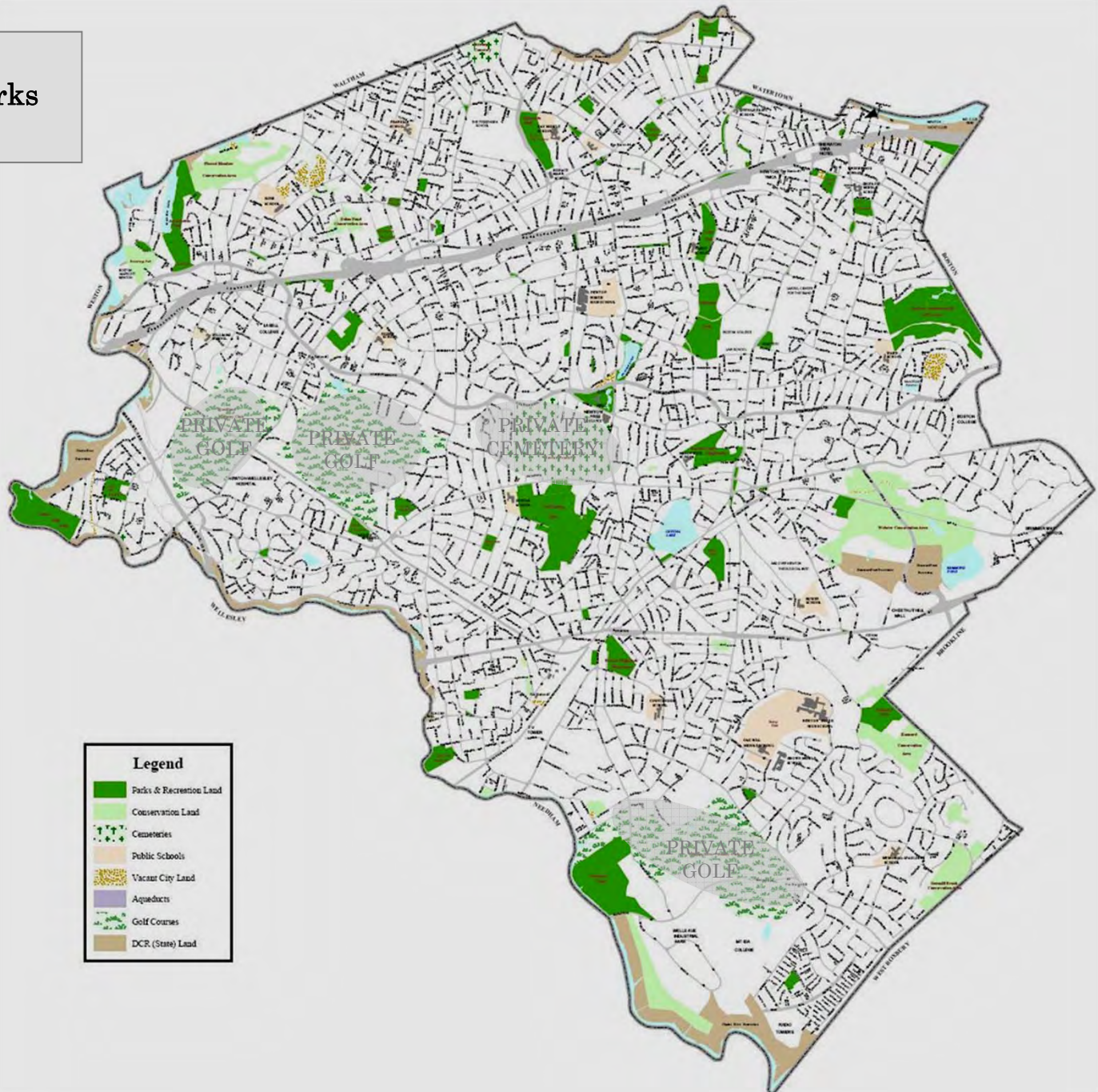
NEWTON HAS
TOO FEW PARKS
FOR FUTURE
REQUIREMENTS

NEWTON SHOULD
HAVE A PROGRAM
FOR FUTURE PARKS



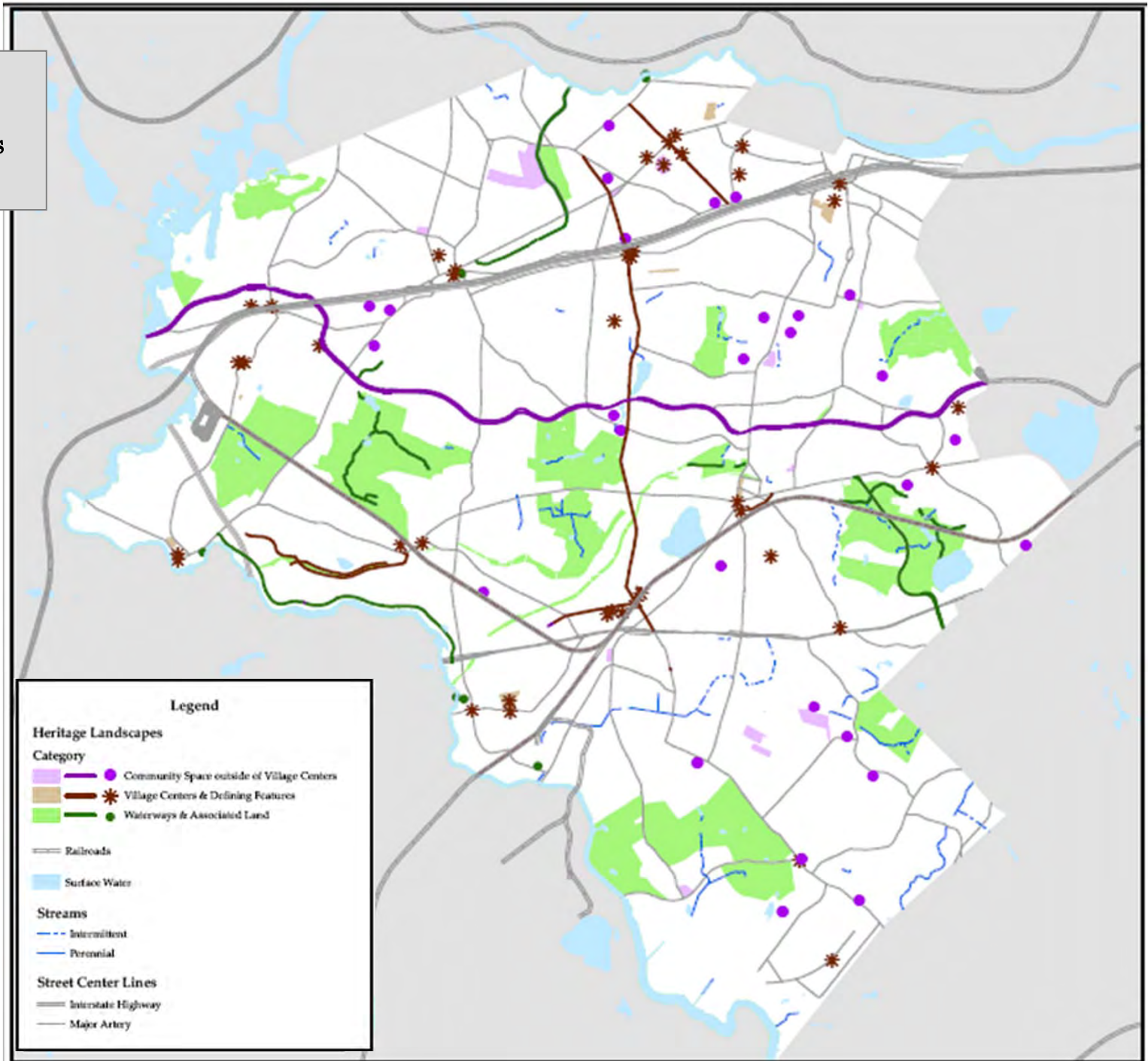
Newton's Open Space & Parks in 2007

The distribution of
Newton's public
parks &
playgrounds still
falls short of the
goals in its 1921
plan.



Newton's Heritage Landscapes 2009

Citizens especially value landscapes associated with village centers and with water.



Newton's Village History

“One size may not fit all” for open space, parks & recreation goals in Newton's diverse villages.

river mill villages

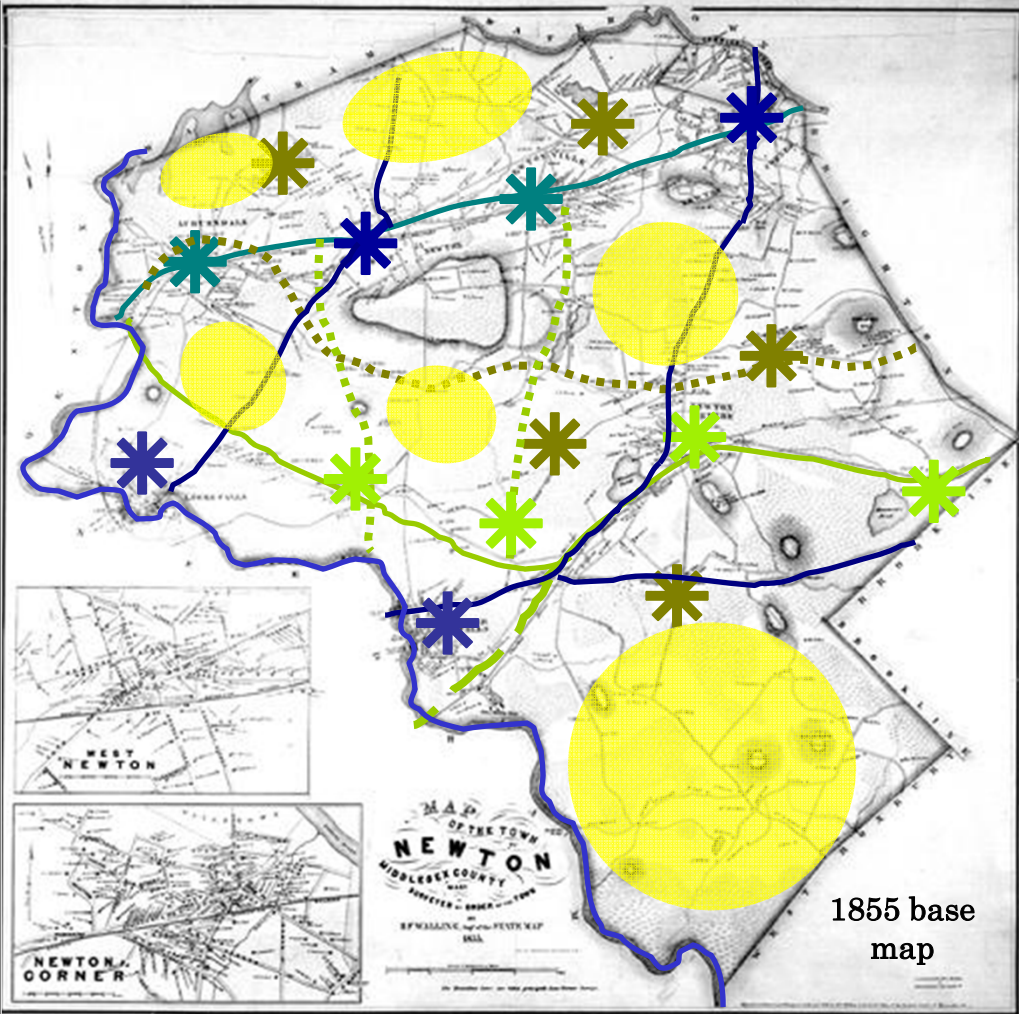
18th-early 19th c. villages

1840s-70s railroad villages

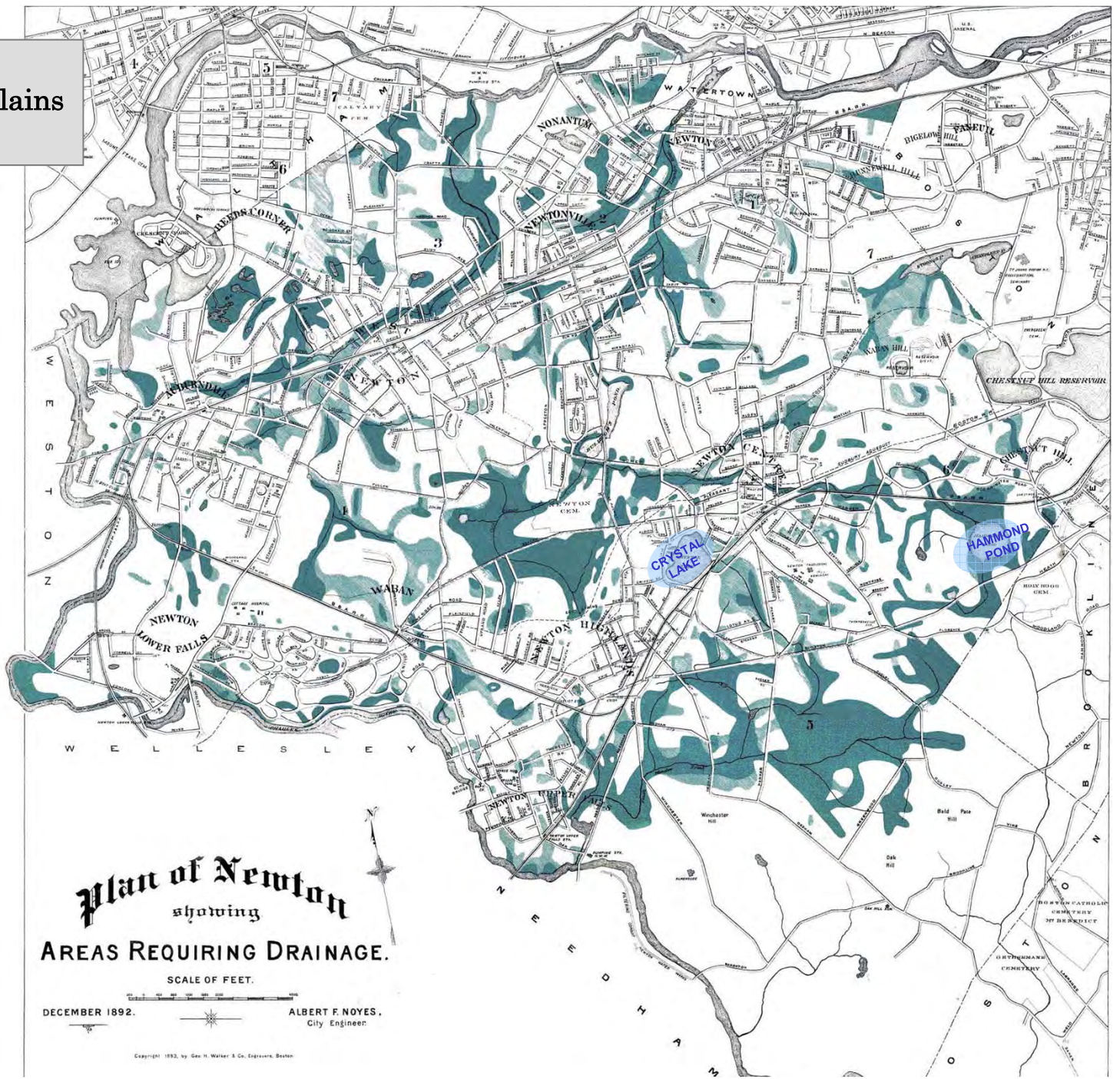
1880s-1920 railroad suburb

1890s-1930s streetcar suburb

postwar auto-mobile suburb



Newton's
Wetlands & Floodplains
in 1892



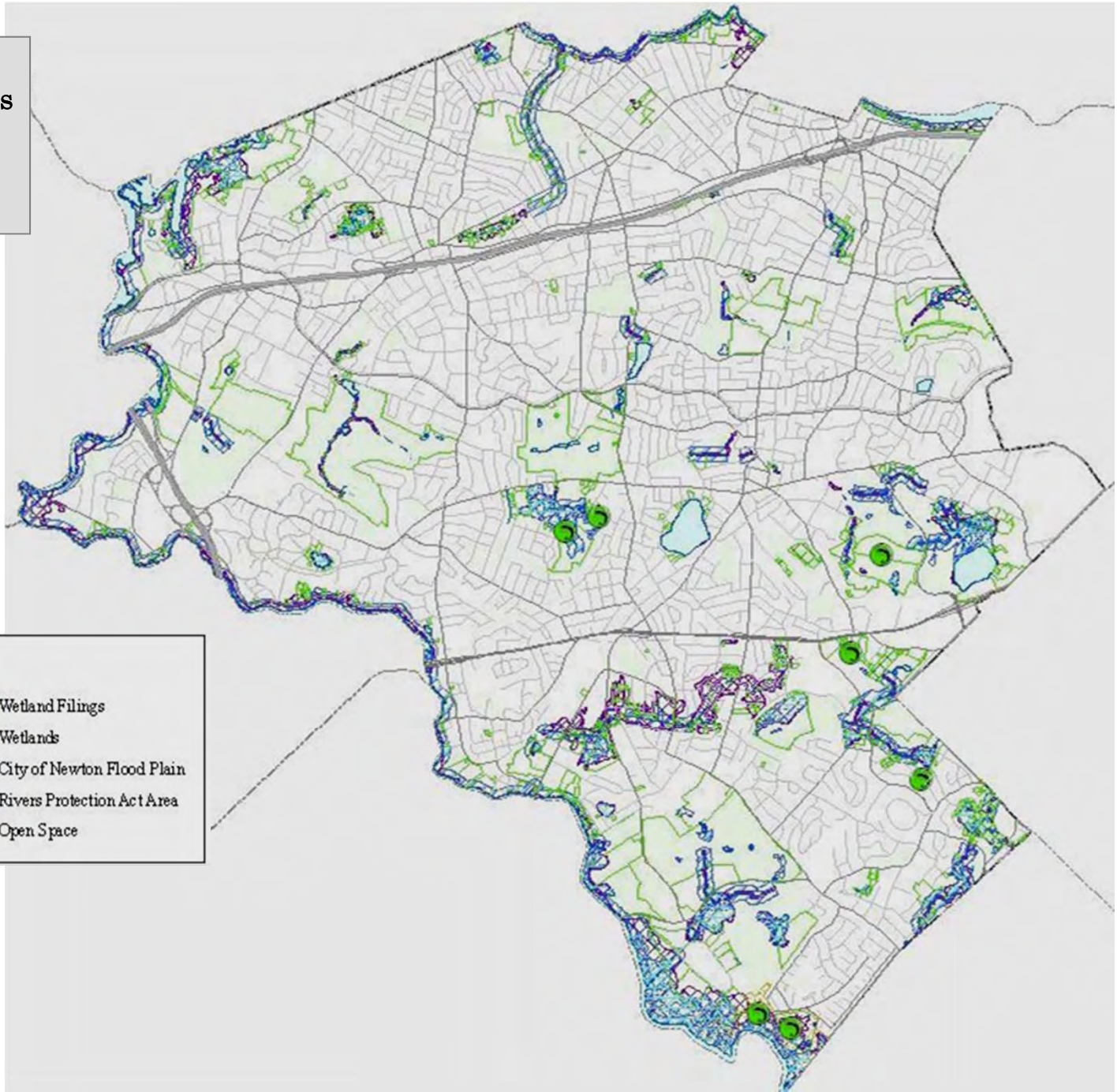
Plan of Newton
showing
AREAS REQUIRING DRAINAGE.

SCALE OF FEET.
DECEMBER 1892. ALBERT F. NOYES,
City Engineer.

Copyright 1892, by Geo. H. Walker & Co. Engineers, Boston.

Newton's Wetlands, Floodplains & Conservation Restrictions in 2007

Newton's current wetlands & surface streams are a remnant of what we once had. Are there opportunities for ecological restoration here?



Legend

Certified Vernal Pools	Wetland Filings
Conservation Restrictions	Wetlands
Wetland Restrictions	City of Newton Flood Plain
Lakes & Rivers	Rivers Protection Act Area
Rare Species Habitat	Open Space



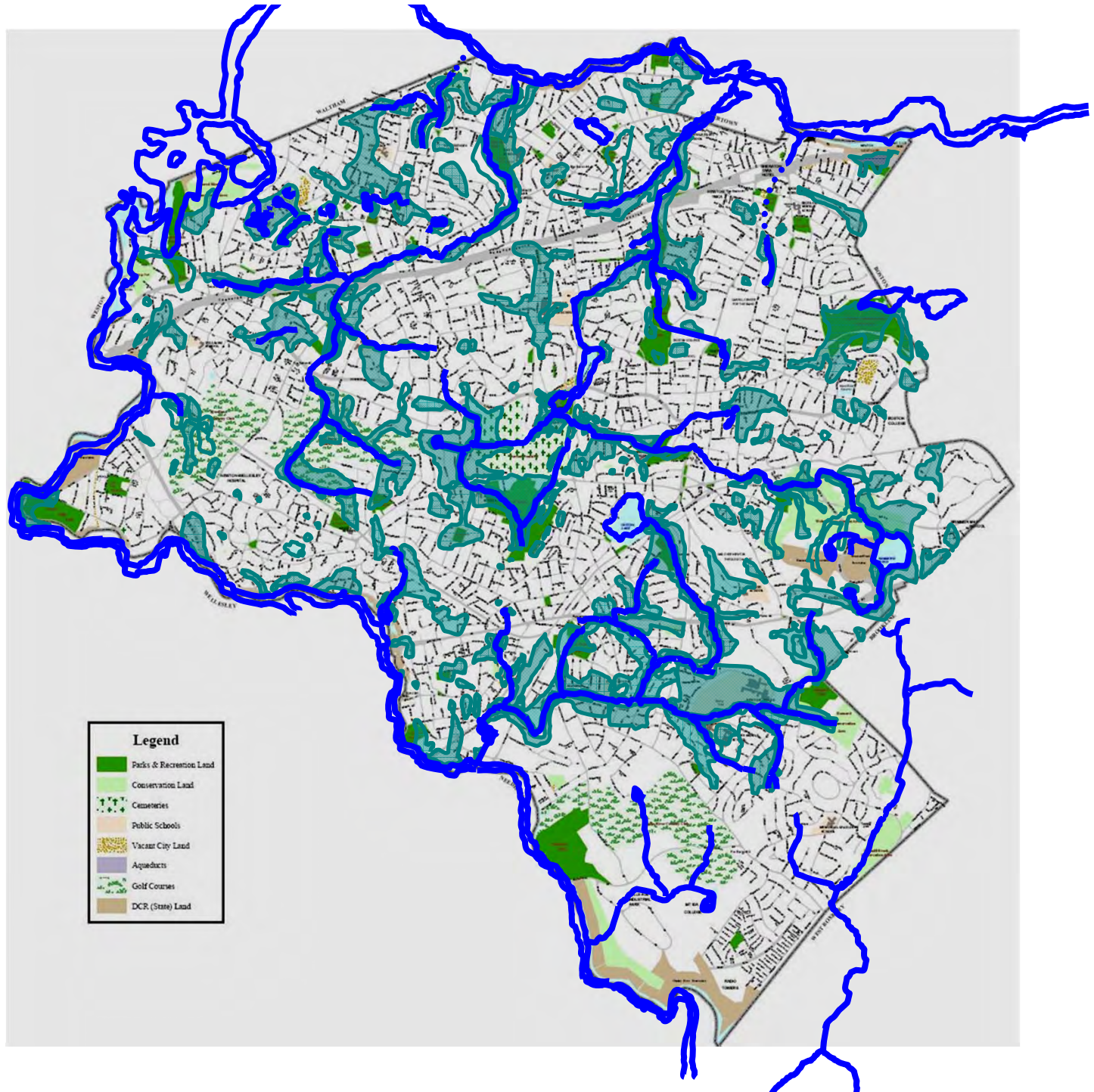
Active ~~vs.~~ Passive Recreation

Newton's current parks "hang" on the framework of its historic streams, ponds & wetlands.

Should priorities for the protection & management of all recreational & open space reflect this framework?

 surface water in 1892

 wetlands in 1892



**“Neighborhoods
Connected by Water”:
Newton Watersheds
2007**

Most of Newton is still drained by just 5 or 6 streams, though for much of their length they now run through underground pipes.

Should Newton plan for & manage its open space & recreation land by watershed, rather than site-by-site or even village-by-village?

Where do stormwater management & water quality fit into the *Recreation & Open Space Plan*?

