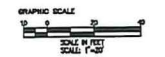


Attachment A
Existing Conditions for Stearns Park

LEGEND

-  LAWN
-  CONCRETE PAVEMENT
-  BITUMINOUS CONCRETE PAVEMENT
-  STONE DUST
-  SAND
-  WOOD CHIP
-  CHAIN LINK FENCE
-  BENCH IN POOR CONDITION
-  BENCH
-  GAME TABLE
-  PICNIC TABLE
-  WATER FOUNTAIN
-  SWING
-  OIL DRUM TRASH RECEPTACLE
-  BIKE RACK
-  BASKETBALL BACKBOARD
-  ENTRY SIGN & PILLAR
-  FLOOD LIGHT
-  STREET LIGHT
-  PATH LIGHT
-  MAJOR ENTRANCE
-  SECONDARY ENTRANCE
-  ACTIVE LAWN AREA
-  PASSIVE LAWN AREA
-  DECIDUOUS TREE
-  DECIDUOUS TREE IN POOR CONDITION
-  FLOWERING TREE



Attachment E
 Concept Plan for Stearns Park

Pressley
 Associates, Inc.
 Landscape Architecture



Improvements to
Stearns Park
 Newton, Massachusetts
 Aug. 22, 2005

DRAWING TITLE	
SCALE 1"=20'	NORTH
DATE Aug 22, 2005	
DRAWING NUMBER	

Site Plan

Improvements to
Stearns Park
Newton, Massachusetts
Aug. 22, 2005

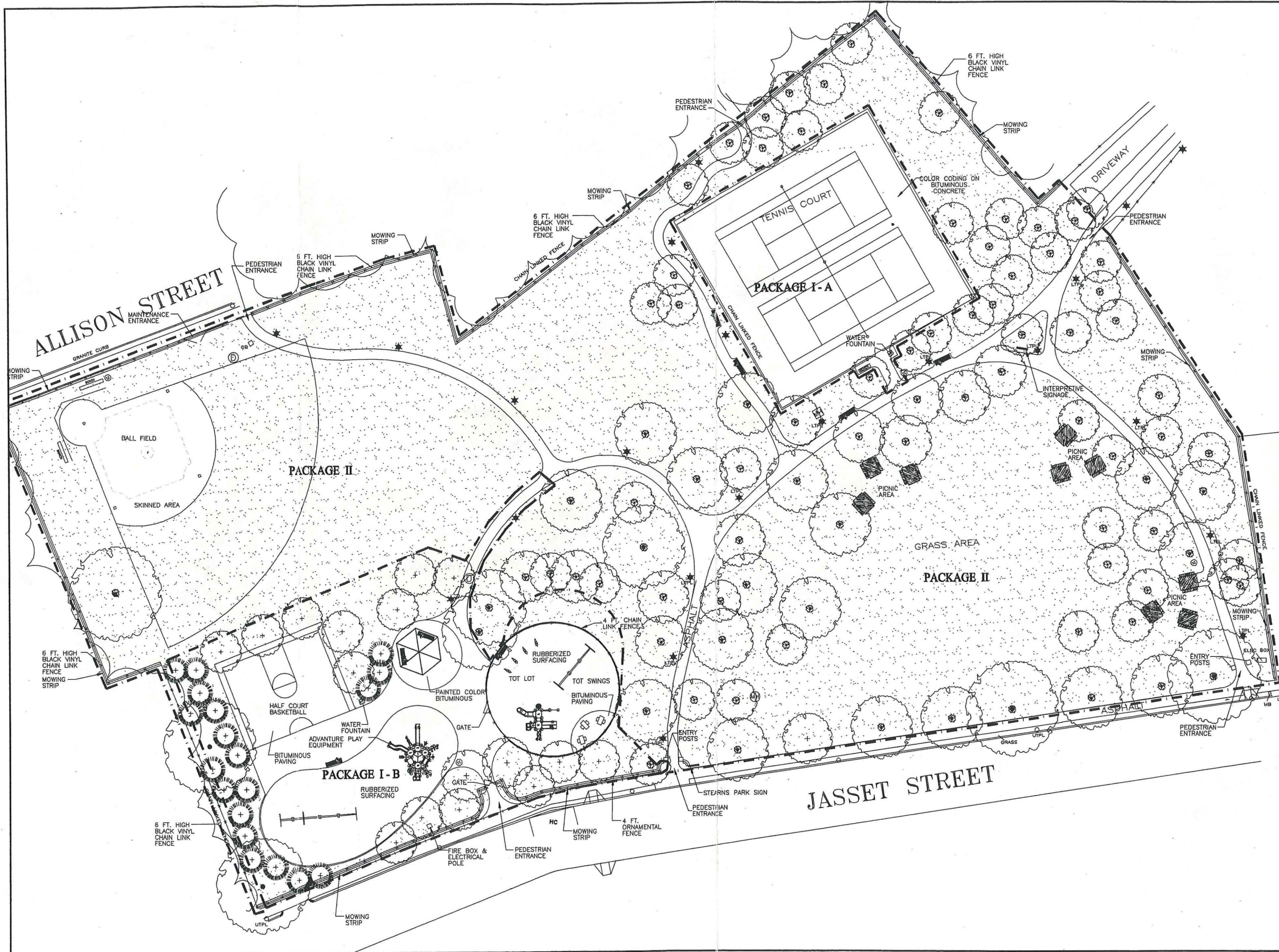
DRAWING TITLE:

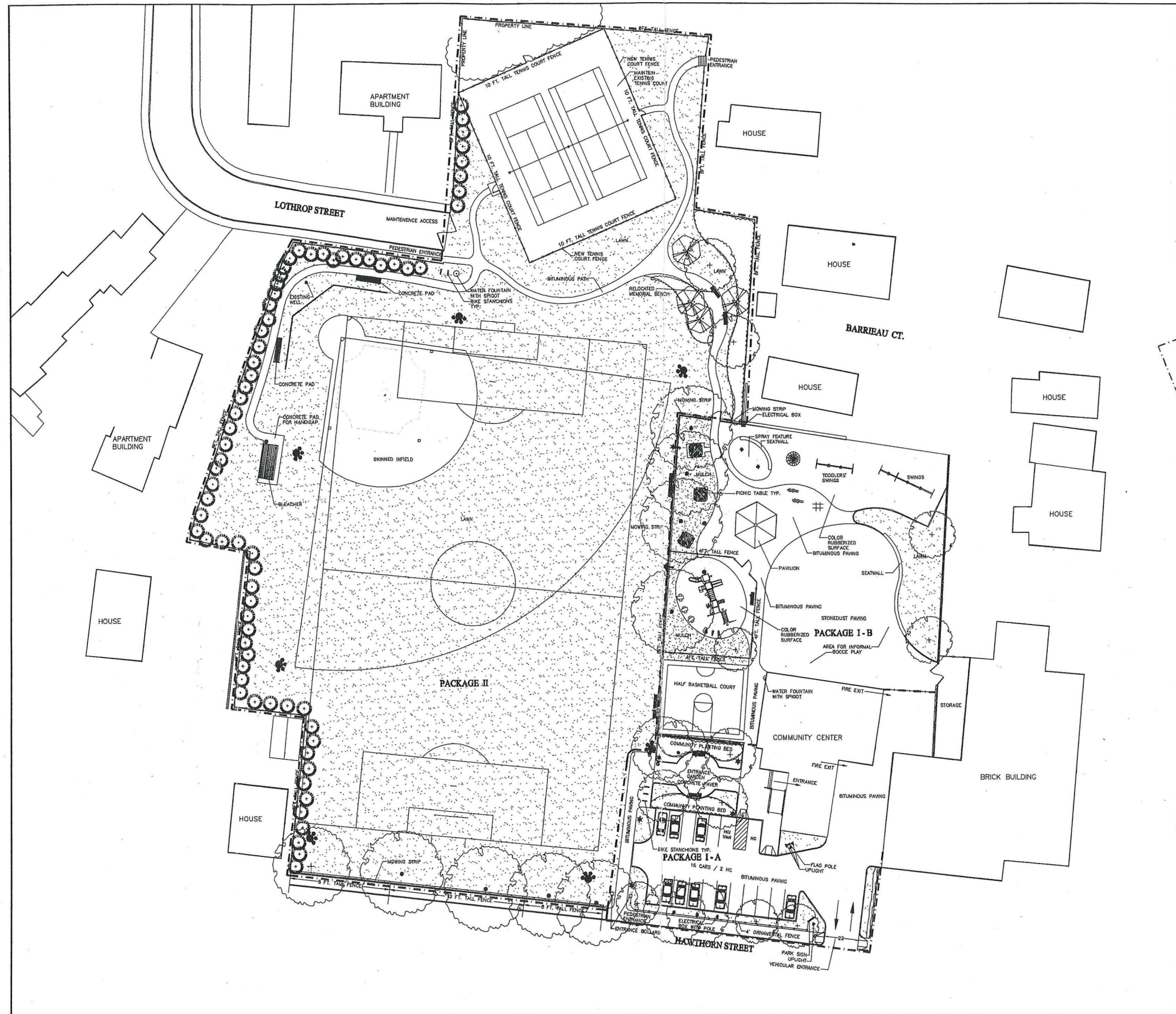
SCALE: 1"=20'

DATE: Aug. 22, 2005

DRAWING NUMBER:

Site Plan





Improvements to
Pellegrini Park
Newton, Massachusetts
Aug. 22, 2005

DRAWING TITLE: _____

SCALE: 1"=40'

DATE: Aug. 22, 2005

DRAWING NUMBER: _____

Site Plan