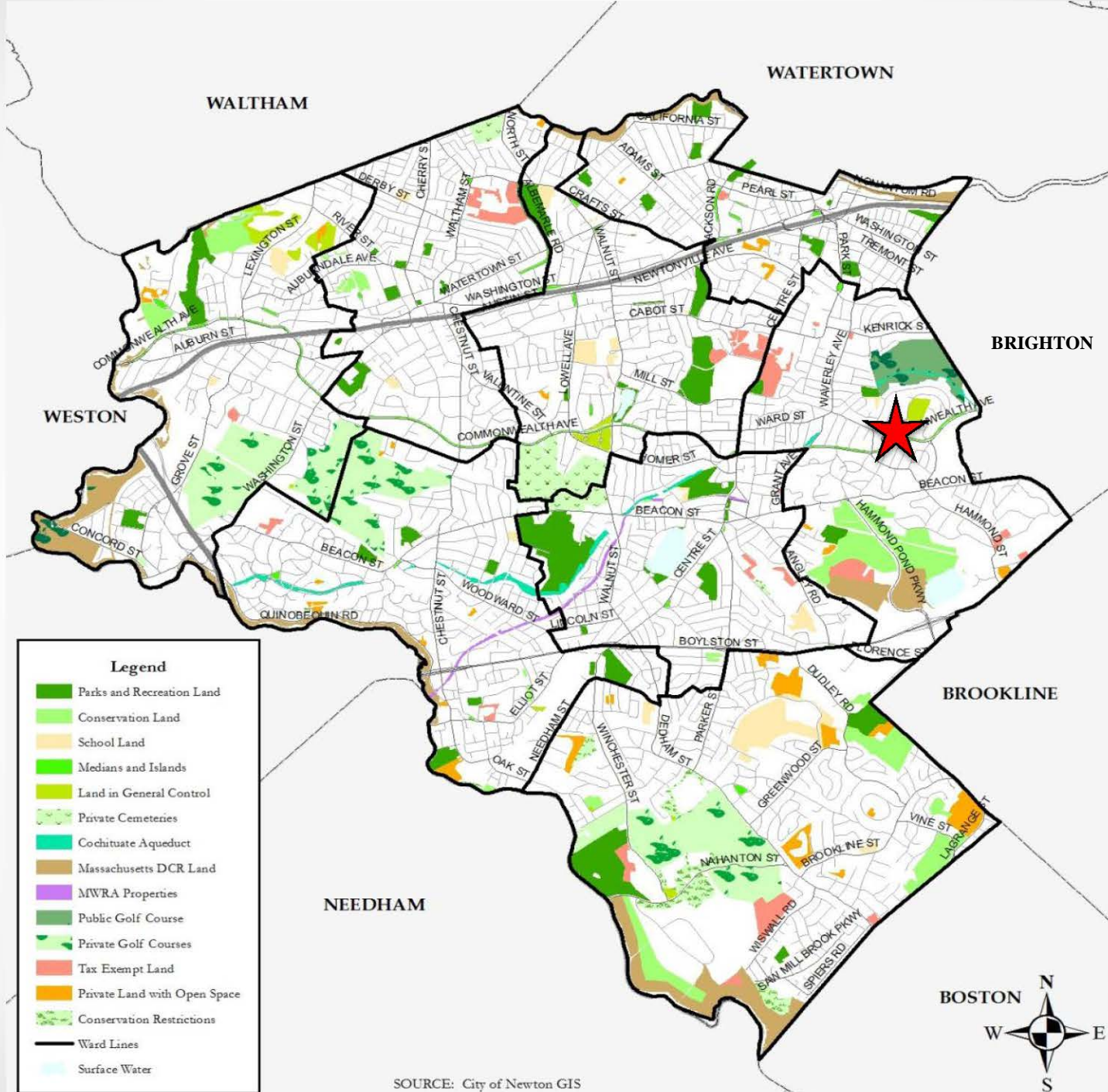




Waban Hill Reservoir

Acquisition and Improvements

Community Preservation Act Funding Request
Newton Parks and Recreation
December 11, 2014



Legend

- Parks and Recreation Land
- Conservation Land
- School Land
- Medians and Islands
- Land in General Control
- Private Cemeteries
- Cochituate Aqueduct
- Massachusetts DCR Land
- MWRA Properties
- Public Golf Course
- Private Golf Courses
- Tax Exempt Land
- Private Land with Open Space
- Conservation Restrictions
- Ward Lines
- Surface Water

SOURCE: City of Newton GIS







Waban Hill
Reservoir



Manet Rd, Newton, MA 02467, USA

© 2014 Google

Google Earth

1995

Imagery Date: 8/24/2013 42°20'18.31" N 71°10'25.95" W elev 294 ft eye alt 3514 ft

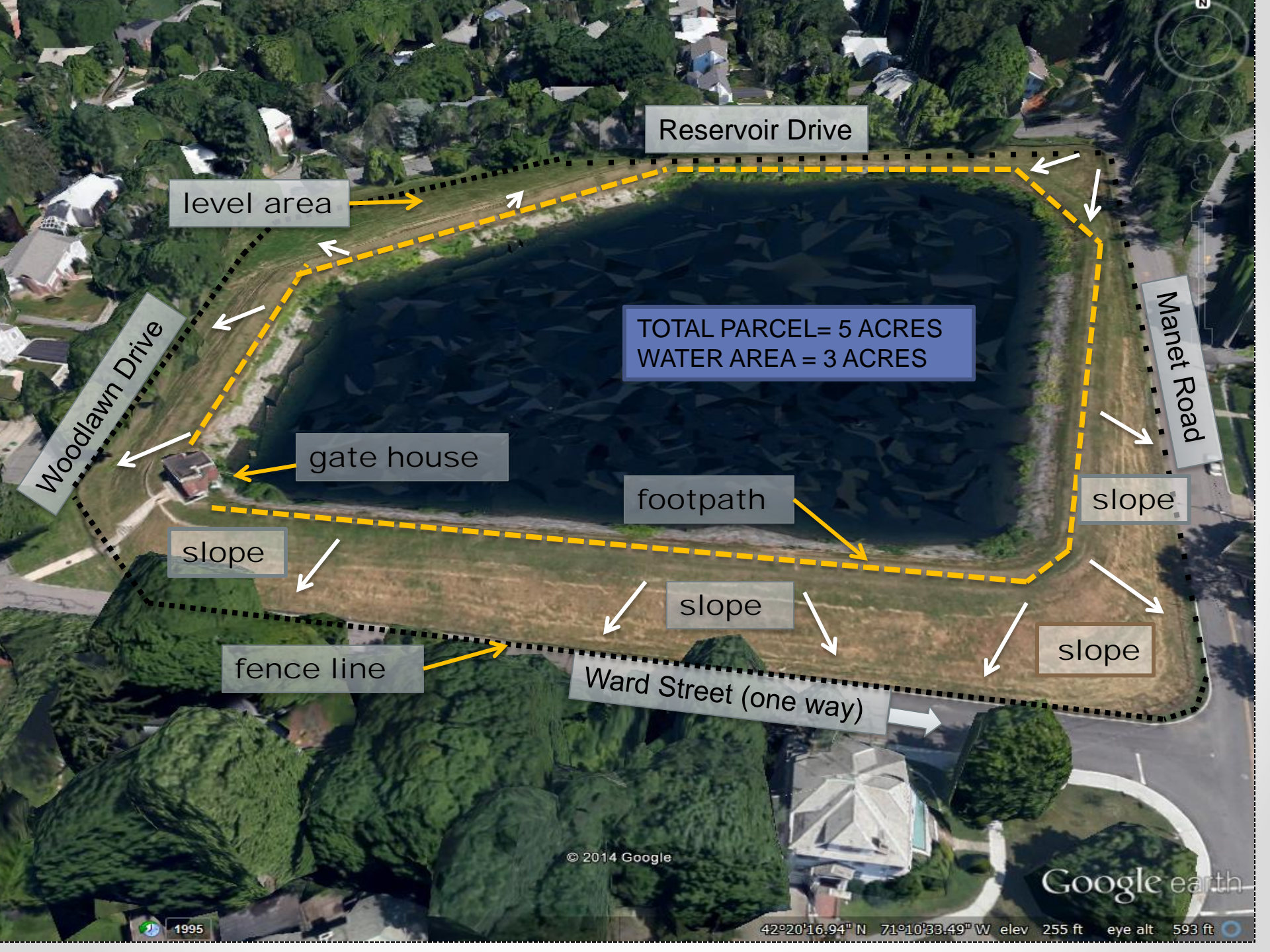


© 2014 Google
© 2014 Google

Google earth

[Report a problem](#)





Reservoir Drive

level area

TOTAL PARCEL= 5 ACRES
WATER AREA = 3 ACRES

Woodlawn Drive

gate house

footpath

Manet Road

slope

slope

slope

slope

fence line

Ward Street (one way)

© 2014 Google

Google earth

1995


42°20'16.94" N 71°10'33.49" W elev 255 ft eye alt 593 ft




REPORT ANY UNUSUAL
ACTIVITY OR EMERGENCY
CALL 617.305.5603







The capital/development and 10-year operating project budgets included at the end of the December 11, 2014 presentation were not legible online in PowerPoint.

These budgets are posted separately on the CPC webpage for this project, from this link:

www.newtonma.gov/civicax/filebank/documents/63200