

Upper Falls Playground Rehabilitation Plan - Phase I

FY08 Application to the CPC
by Newton Parks and Recreation

January 23, 2008



Existing Conditions





Upper tier



Lower tier

Upper Falls baseball players, late 1800's



from the Makers of the Mold by Kenneth W. Newcomb

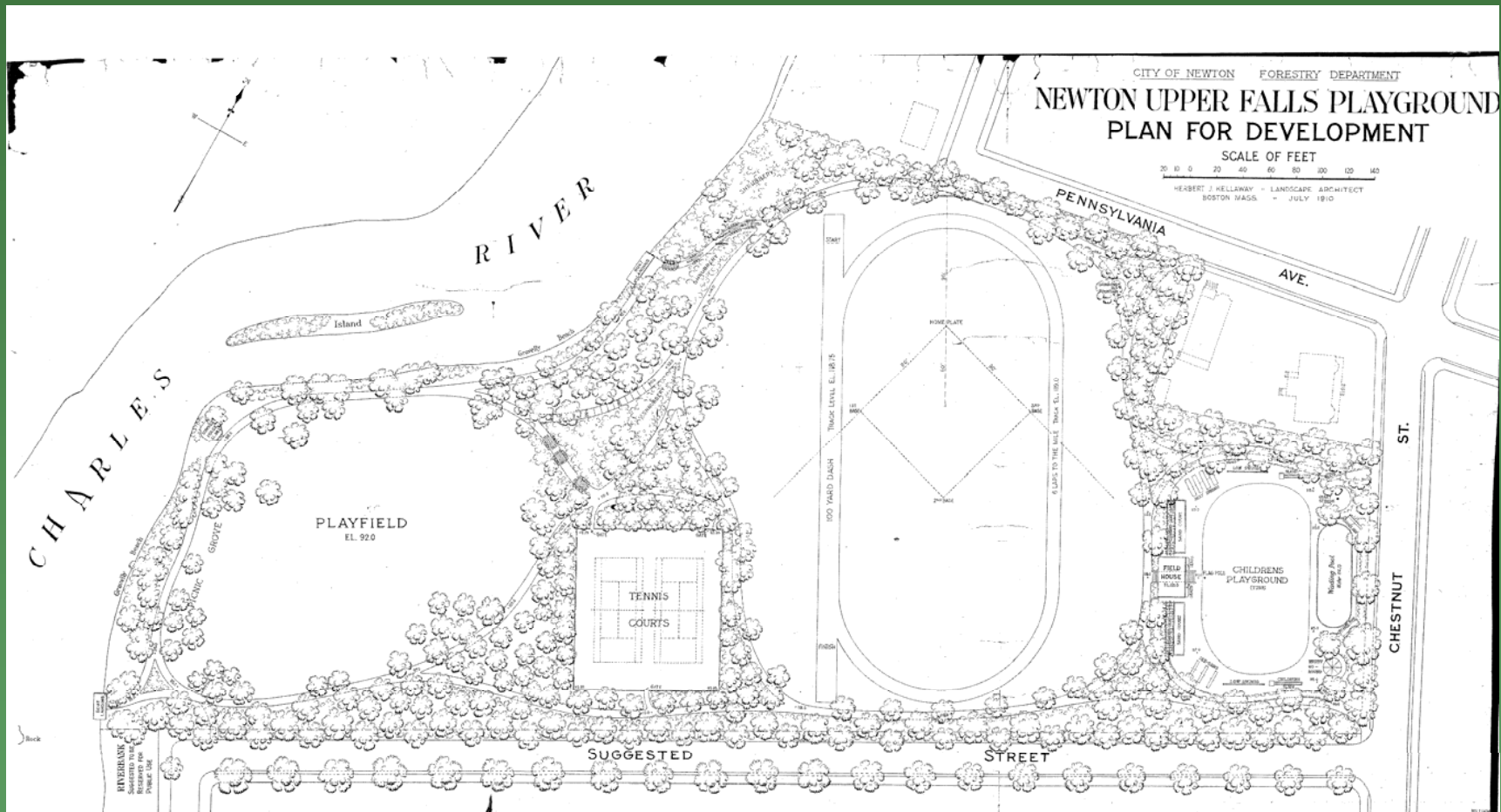
Canoe paddler along the banks of the Upper Charles River

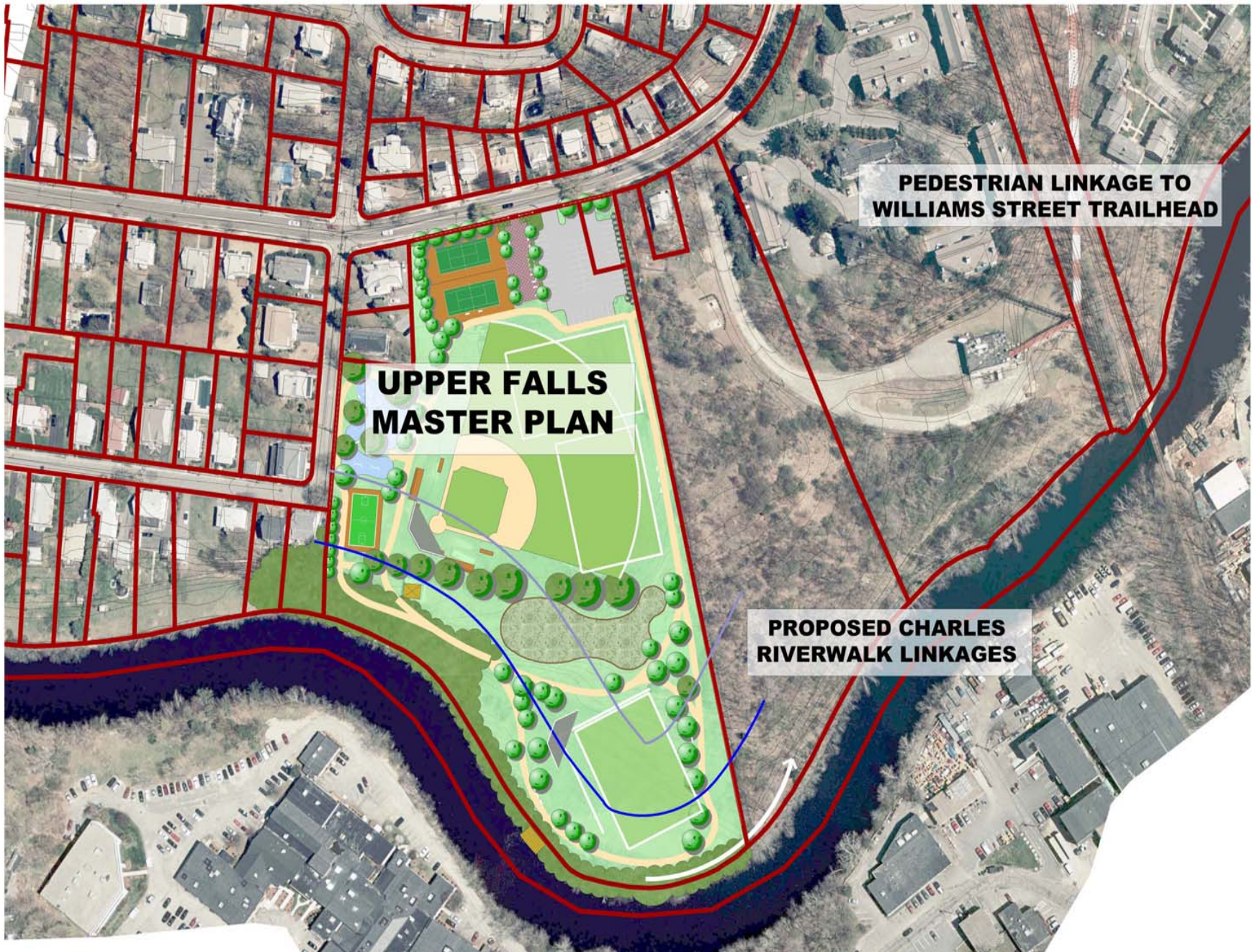


from the Makers of the Mold by Kenneth W. Newcomb

1910 Plan for Development

Herbert J. Kellaway, Landscape Architect





**PEDESTRIAN LINKAGE TO
WILLIAMS STREET TRAILHEAD**

**UPPER FALLS
MASTER PLAN**

**PROPOSED CHARLES
RIVERWALK LINKAGES**

2007 Master Plan by Weston & Sampson Engineers, Inc.

Phase I goals:

- dramatically upgrade park's overall image & curb appeal;
- create new opportunities for access, reducing pedestrian/vehicular conflicts;
- develop series of passive & active recreation opportunities for all.

