

Newton Centre Playground Rehabilitation Plan

Phase I

FY08 CPA Application

by the
Newton Parks and Recreation Department

January 23, 2008

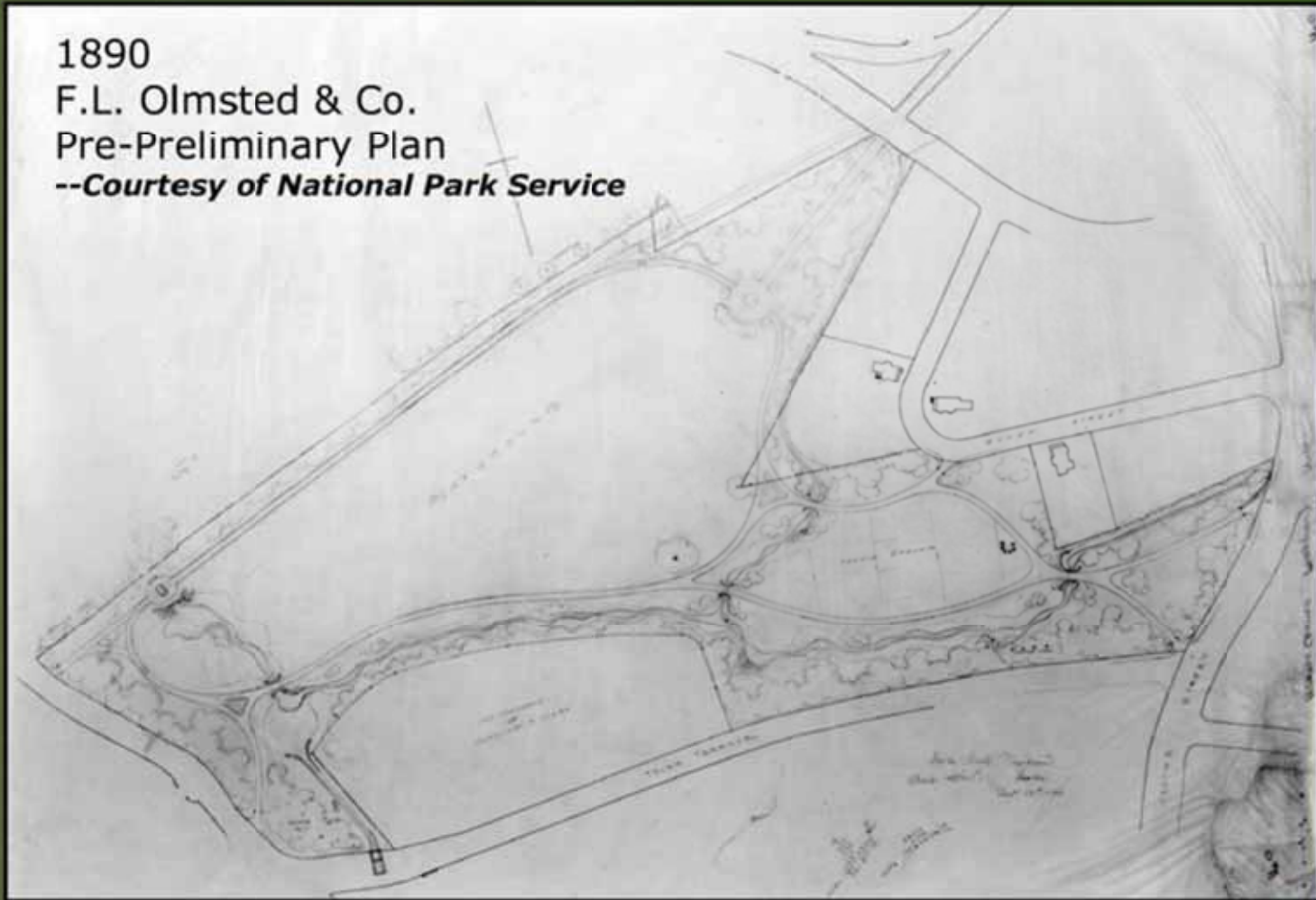


Project goals:

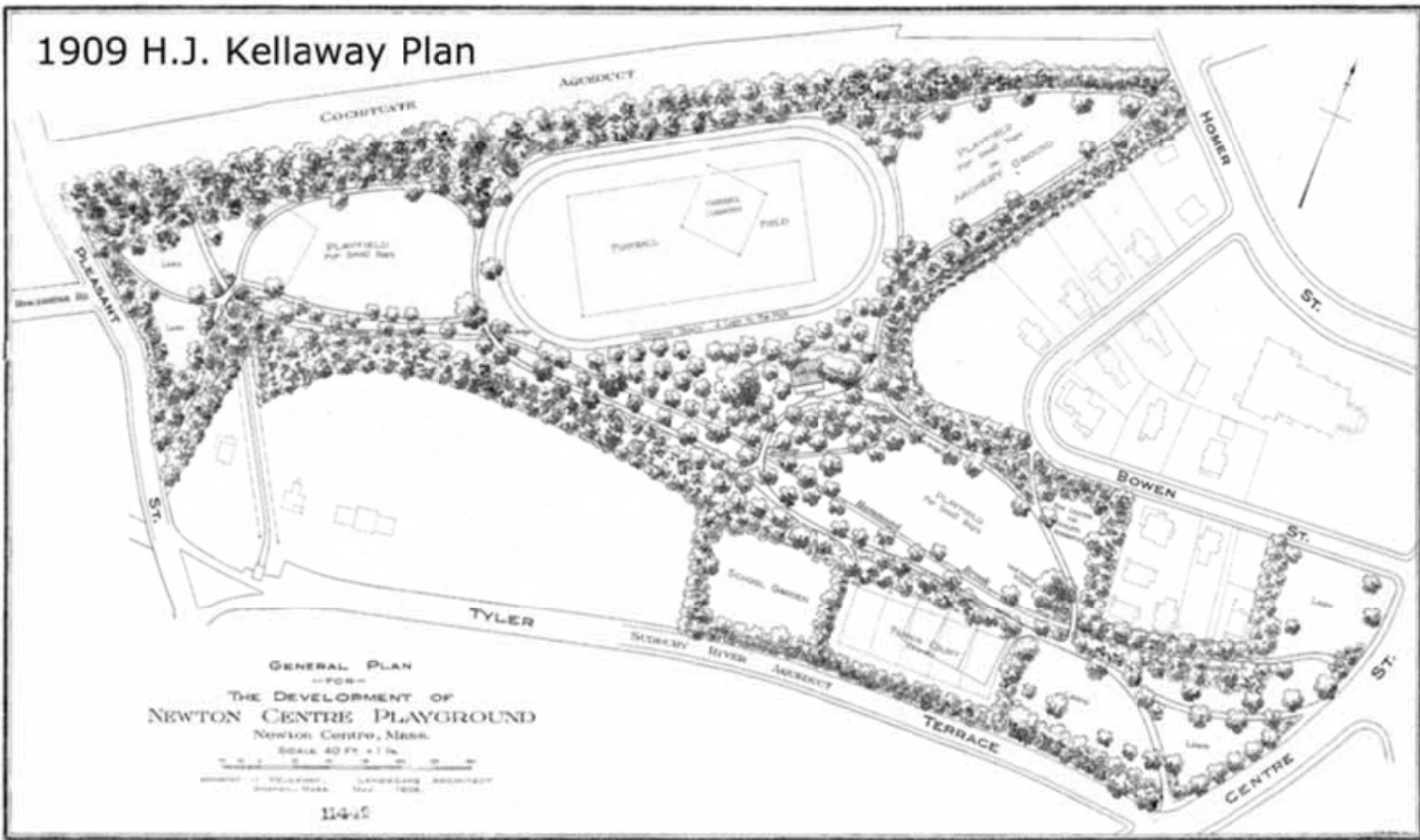
- ◆ make the playground accessible to people of all ages and abilities
- ◆ reinforce an overall image in keeping with the park's historic background
- ◆ provide for increased passive recreation opportunities while maintaining the active components

Unique historic, cultural and natural resource

1890
F.L. Olmsted & Co.
Pre-Preliminary Plan
--Courtesy of National Park Service



1909 H.J. Kellaway Plan





Courtesy of the Newton History Museum



Phase I: Bowen Street Entry





2006