

Newton Carriageway Biking and Walking Path

Presented by

Herb Nolan - Solomon Foundation

**Amy Ingles - HSH, Active Transportation
Leader**

October 17, 2019



HOWARD STEIN HUDSON

Engineers + Planners

Riverside Greenway Working Group

Engineers + Planners



Project Origin

- **Riverside Greenway Working Group:**

Vision to create a seamless biking and walking connection between Newton, Weston, and Wellesley increasing access to greenspace, trails, and other recreation opportunities

- **MassTrails, Solomon Foundation, and City of Newton support vision**

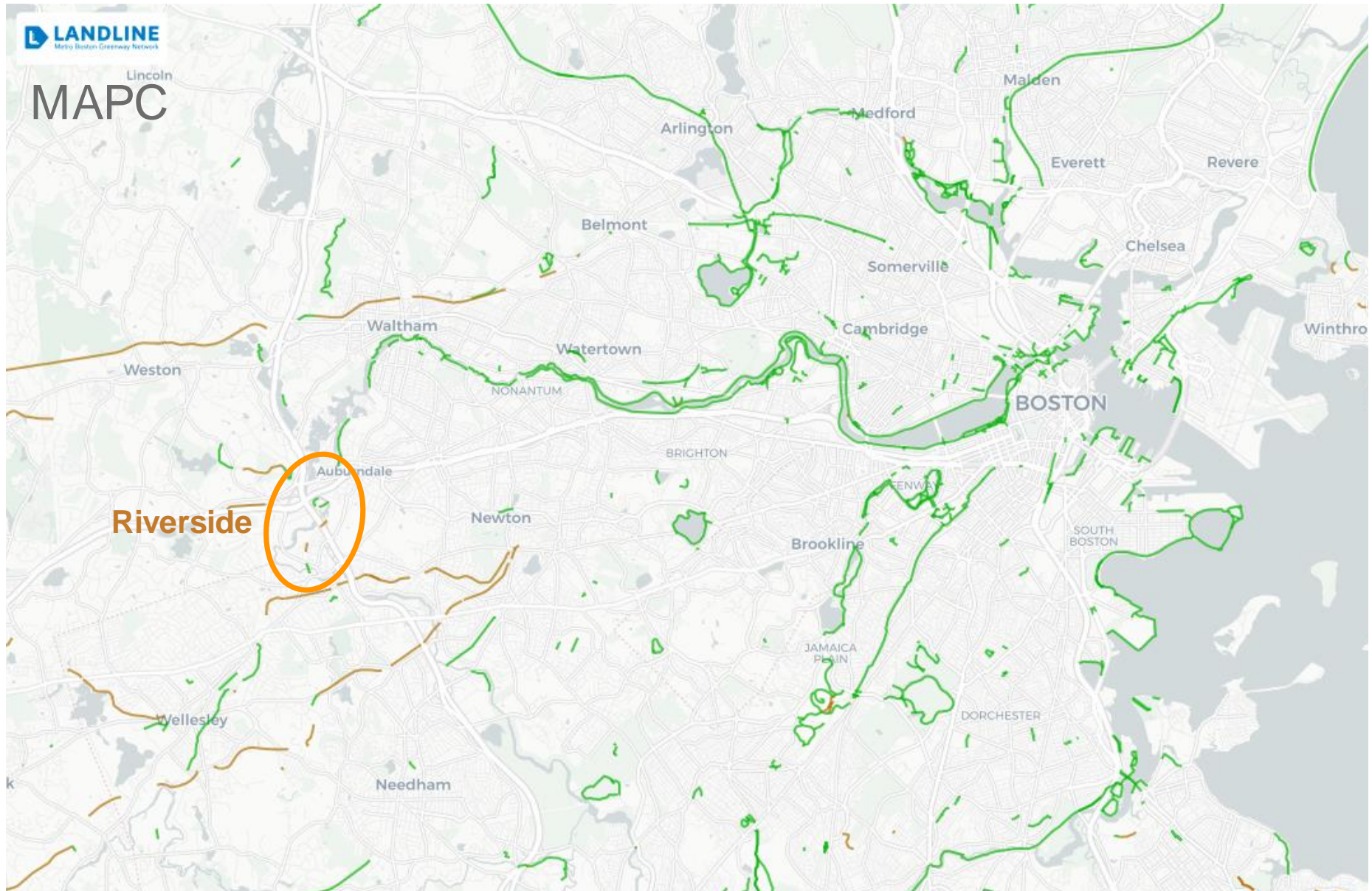
- **MassDOT projects**

- MassDOT – Route 30 bridge project
- Weston Route 30 reconstruction
- Laselle Boathouse bridge replacement

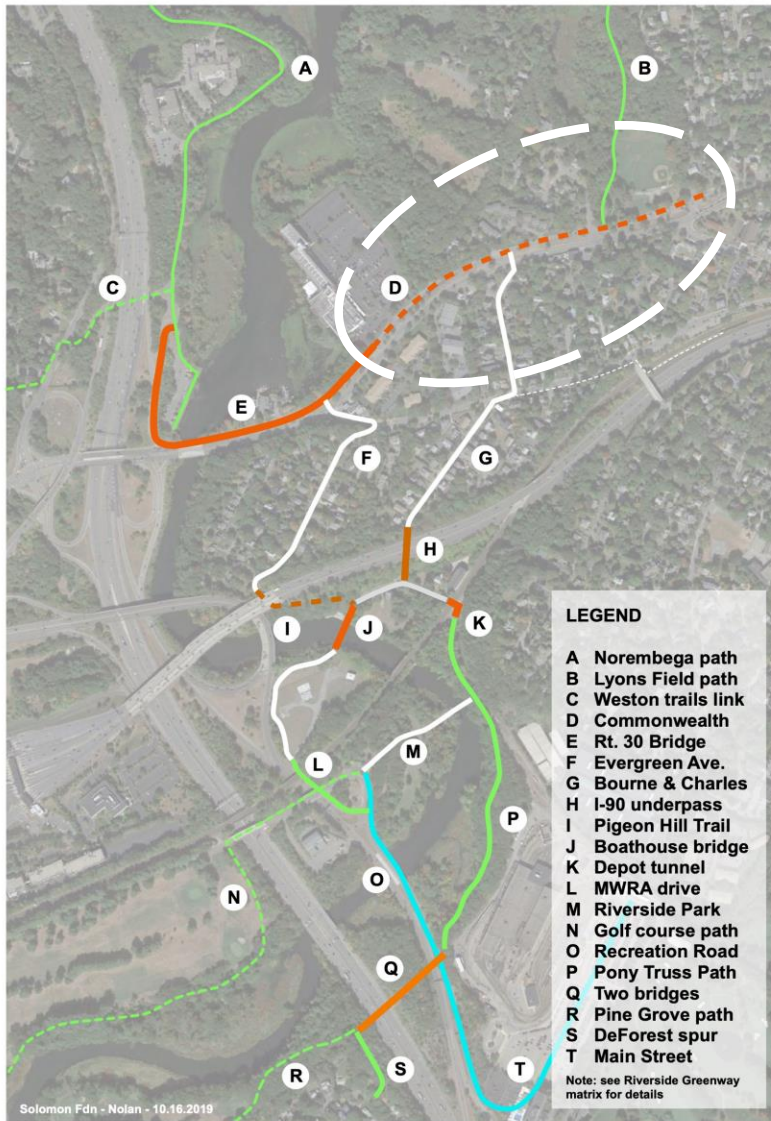


Missing link in a regional path network

Engineers + Planners



Riverside Greenways



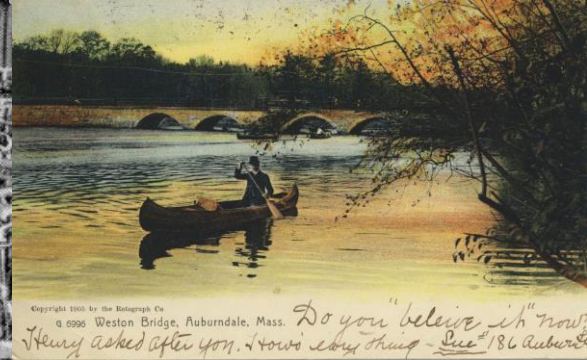
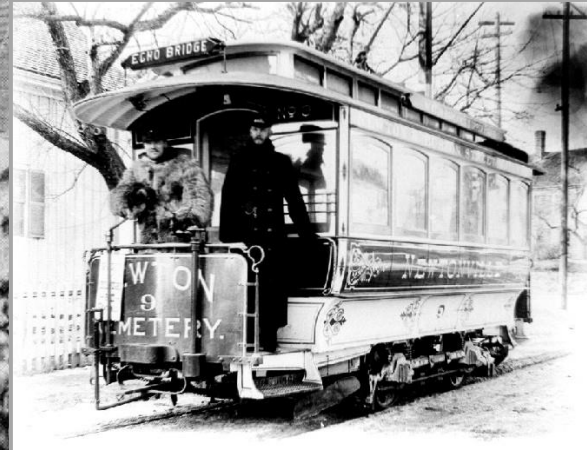
Riverside Greenway Network Plan



Riverside Greenway Network Vision

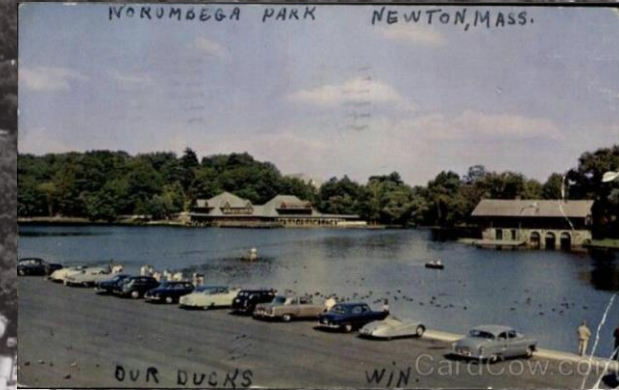
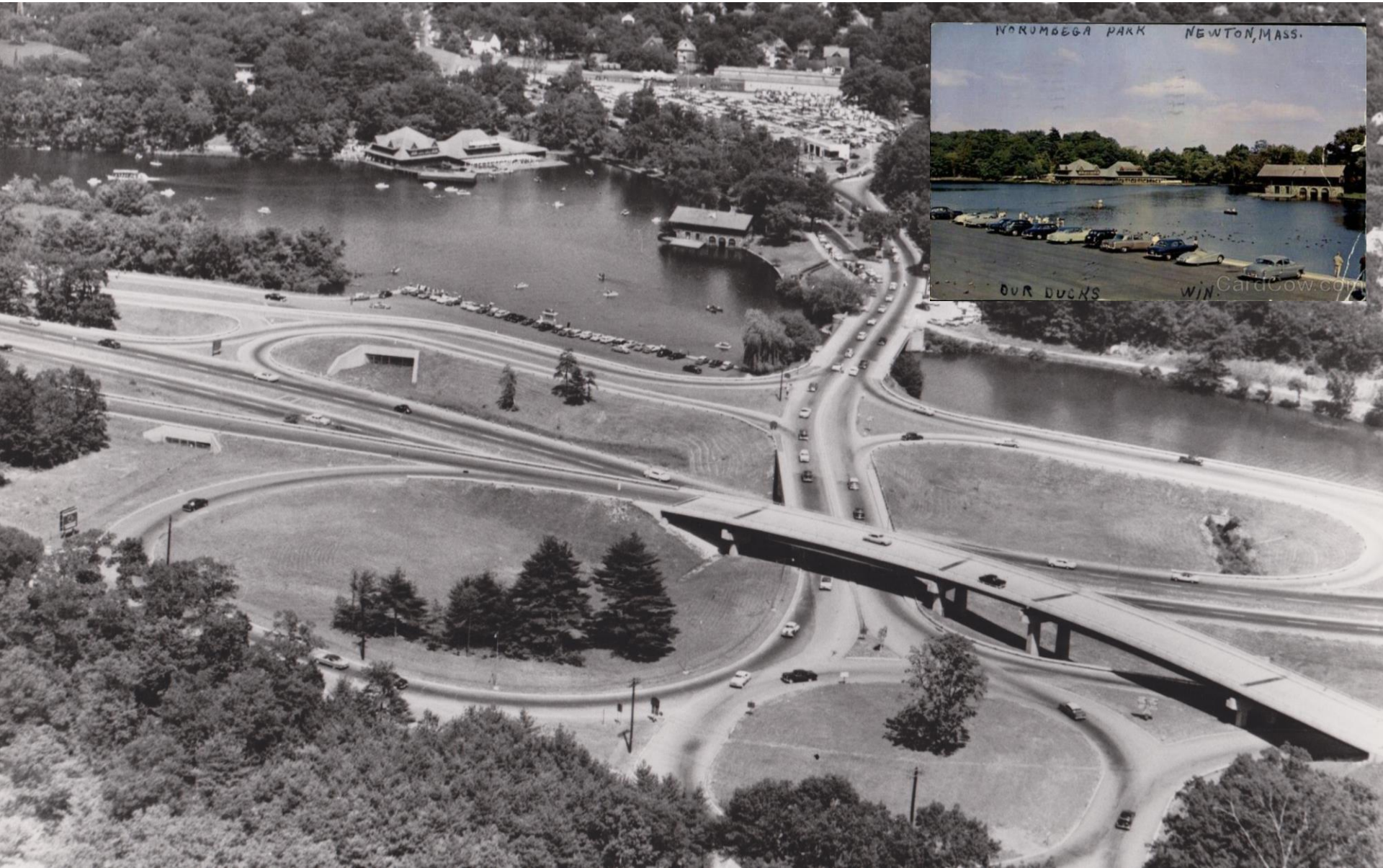
19th century

Engineers + Planners



20th century

Engineers + Planners



21th century

Engineers + Planners



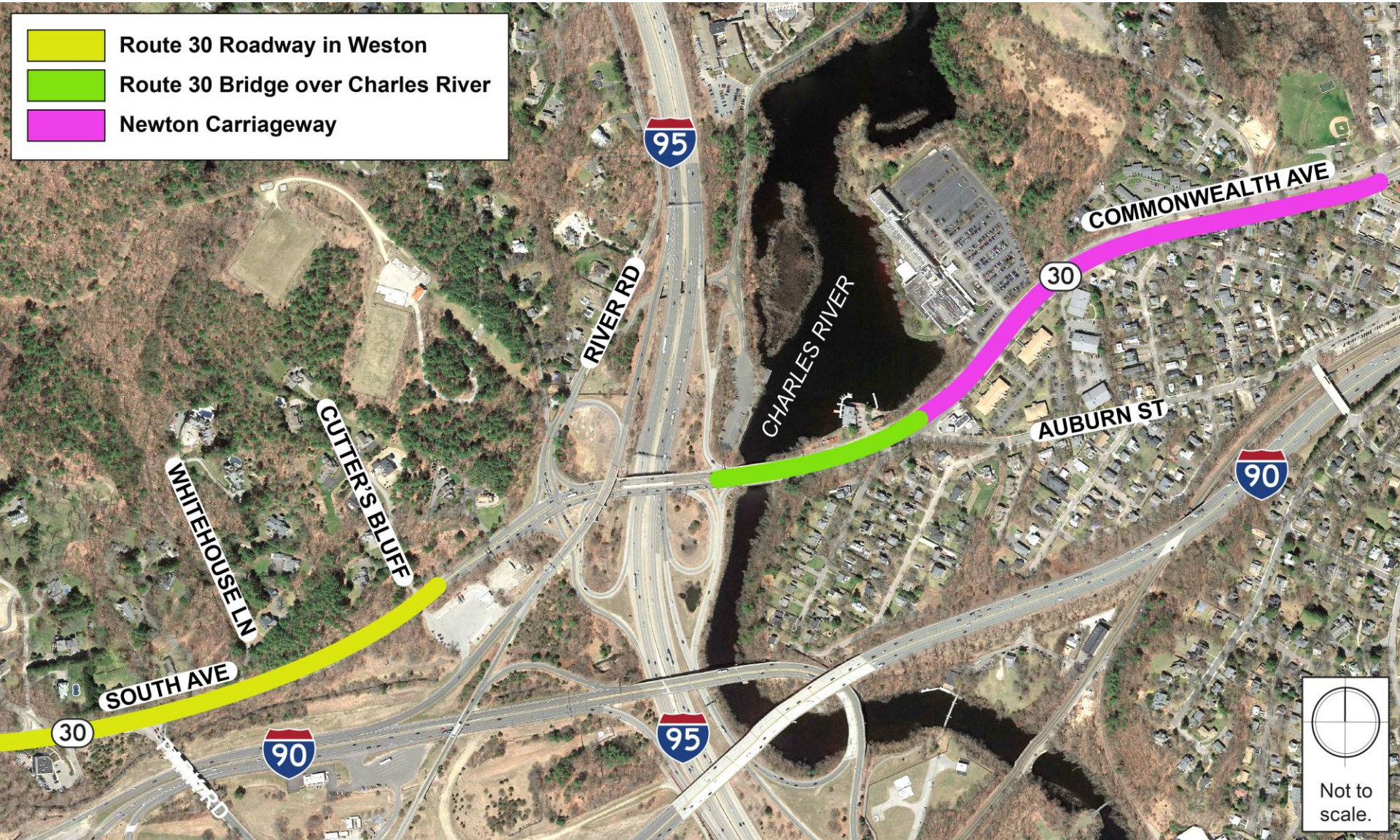
21th century

Engineers + Planners



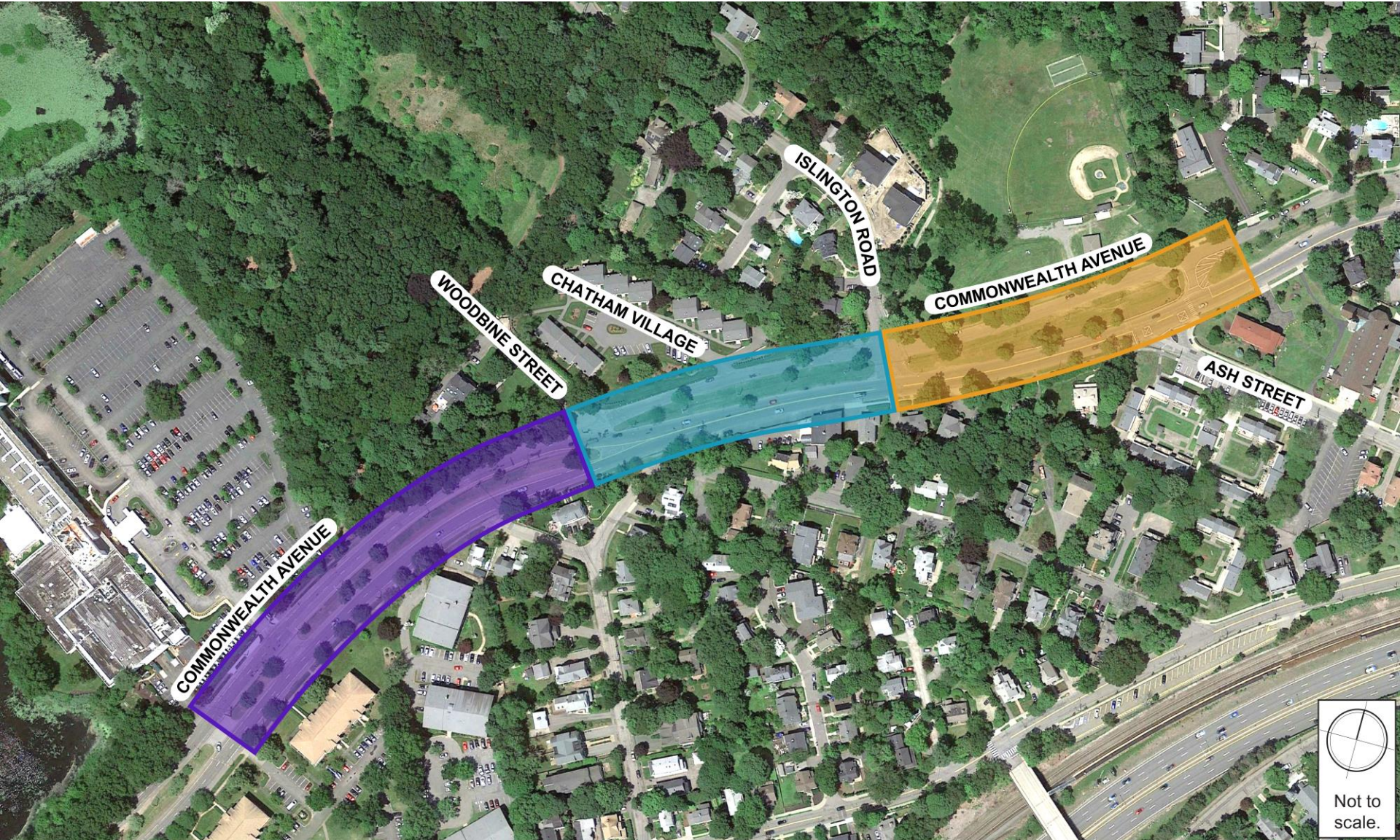
Map of Related Projects

- Route 30 Roadway in Weston
- Route 30 Bridge over Charles River
- Newton Carriageway



Not to scale.

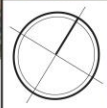
Project Area



Not to scale.

Existing Conditions Marriott to Woodbine Street

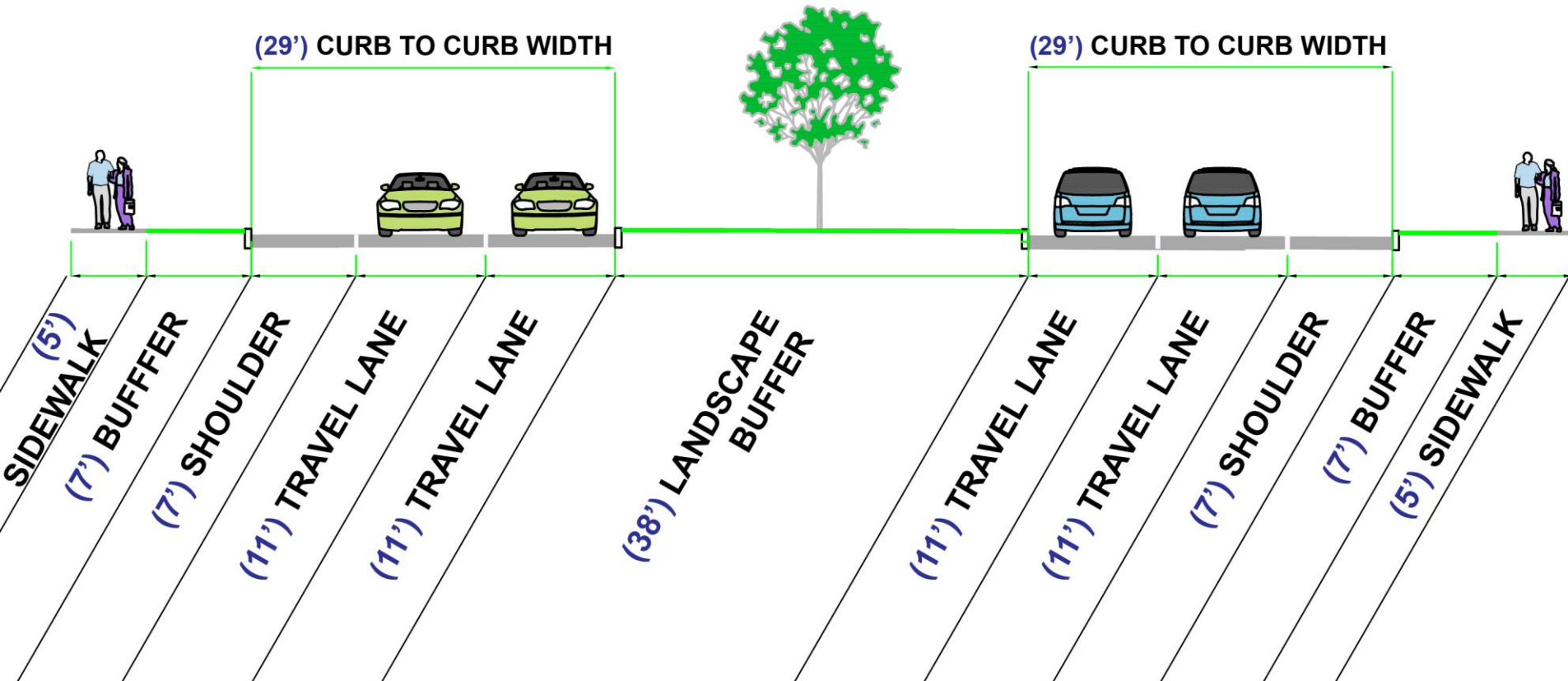
Engineers + Planners



Not to scale.

Existing Conditions Marriott to Woodbine Street

Engineers + Planners



Existing Conditions Woodbine Street to Islington Road

Engineers + Planners

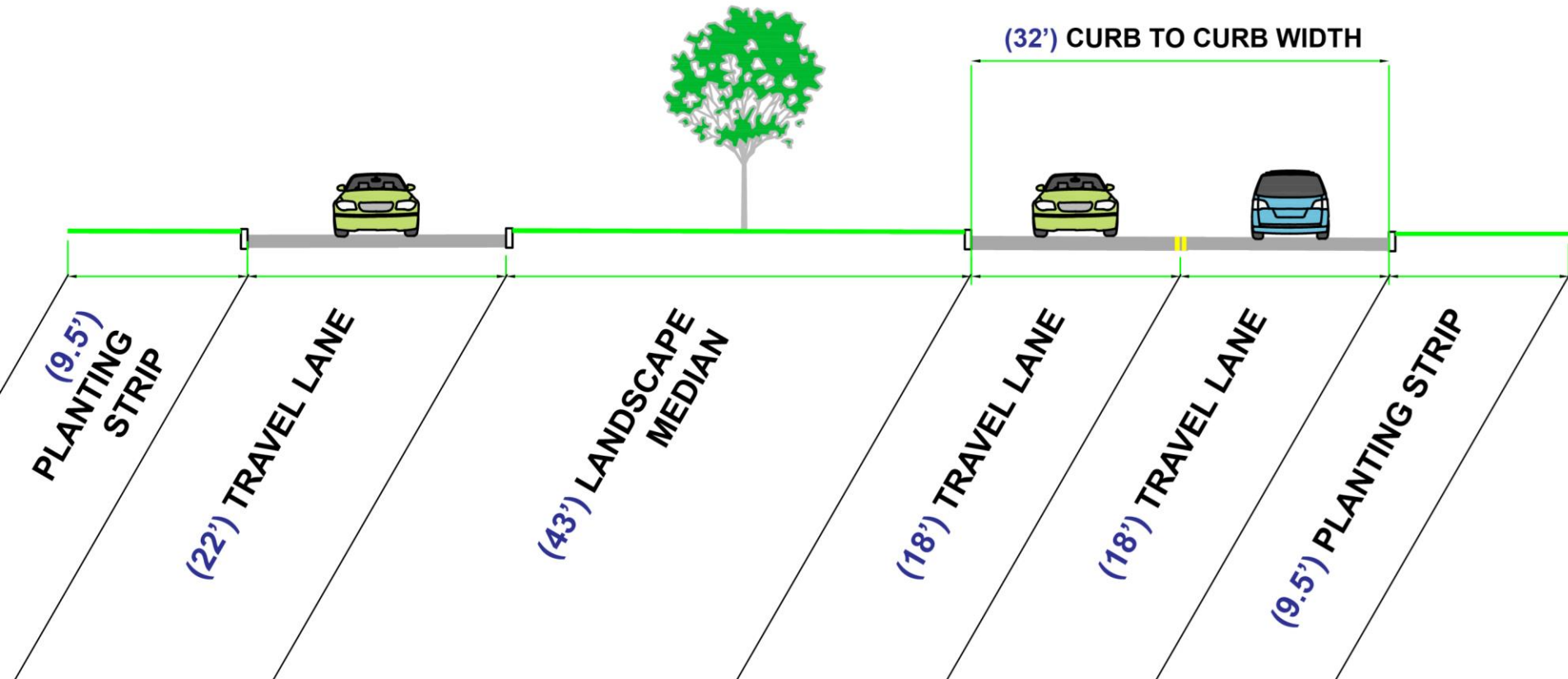


Not to scale.

Existing Conditions

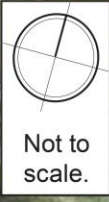
Woodbine Street to Islington Road

Engineers + Planners



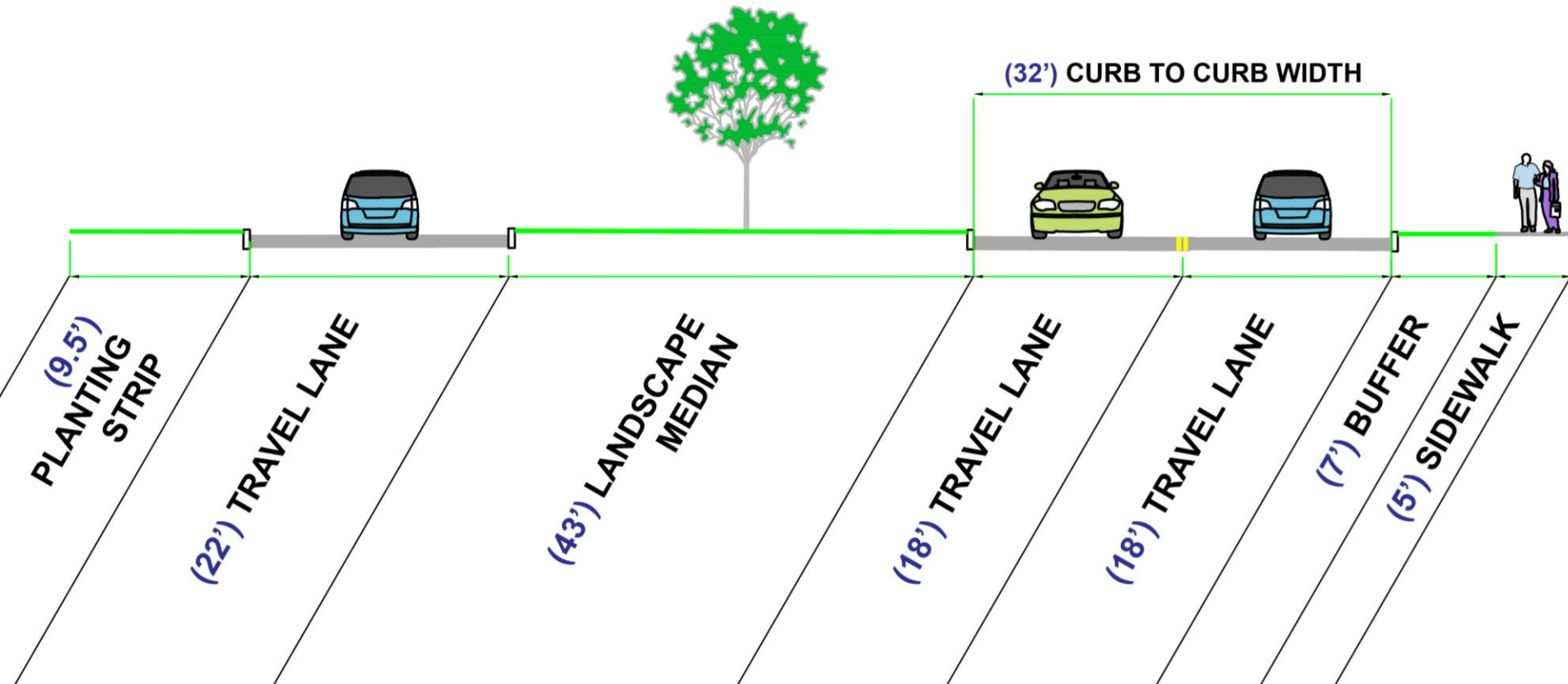
Existing Conditions Islington Road to Ash Street

Engineers + Planners



Existing Conditions Islington Road to Ash Street

Engineers + Planners



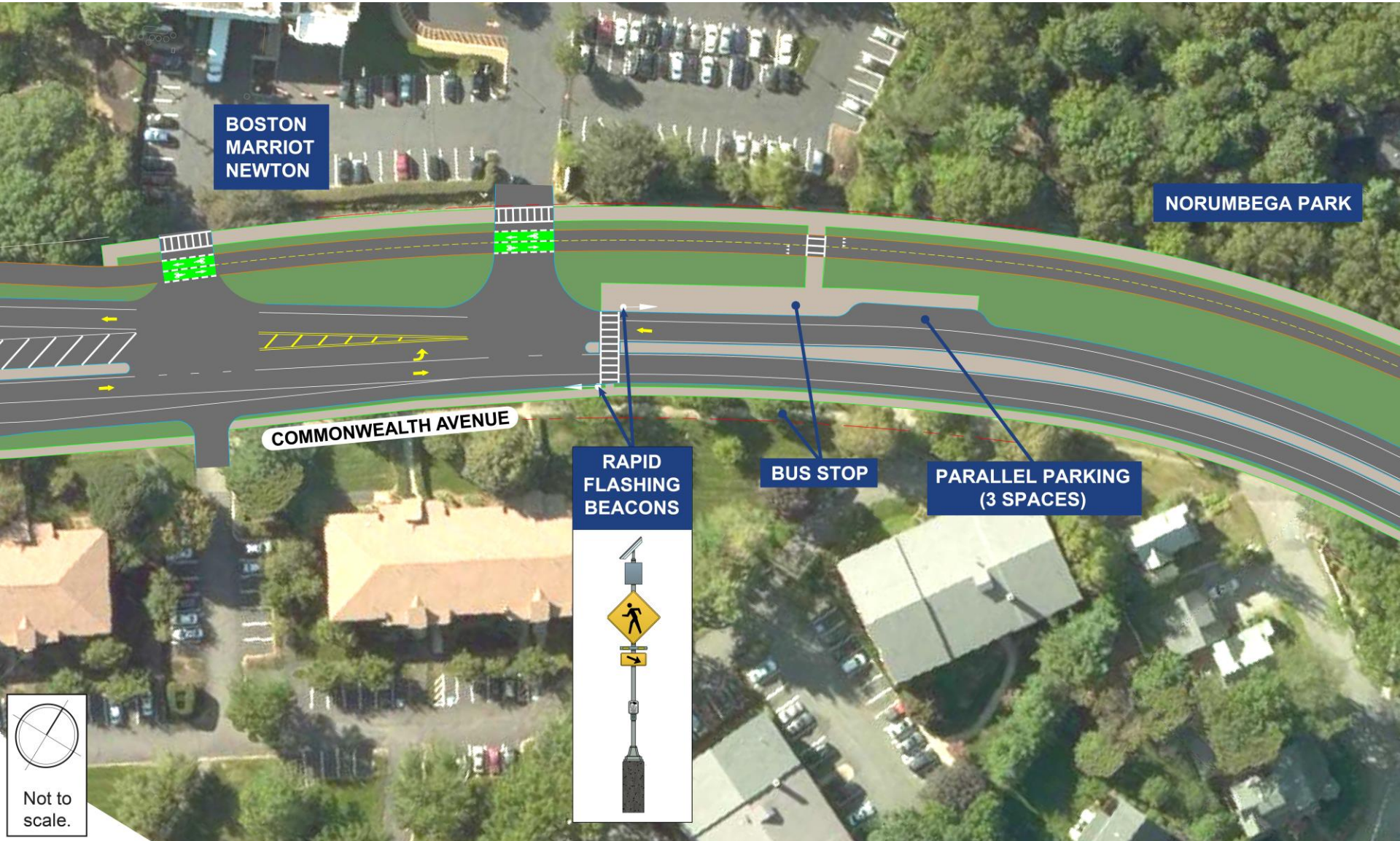
Proposed Concept

- Separated space for bikes and peds
- Commonwealth Avenue – two lanes
- Two Options for Lyons Field area:
 1. Reduced carriageway
 1. *Vehicular access preserved*
 2. *Formalized parking*
 2. Removed carriageway
 1. *Bike/ped access only*
 2. *On-street parking on Commonwealth Ave*



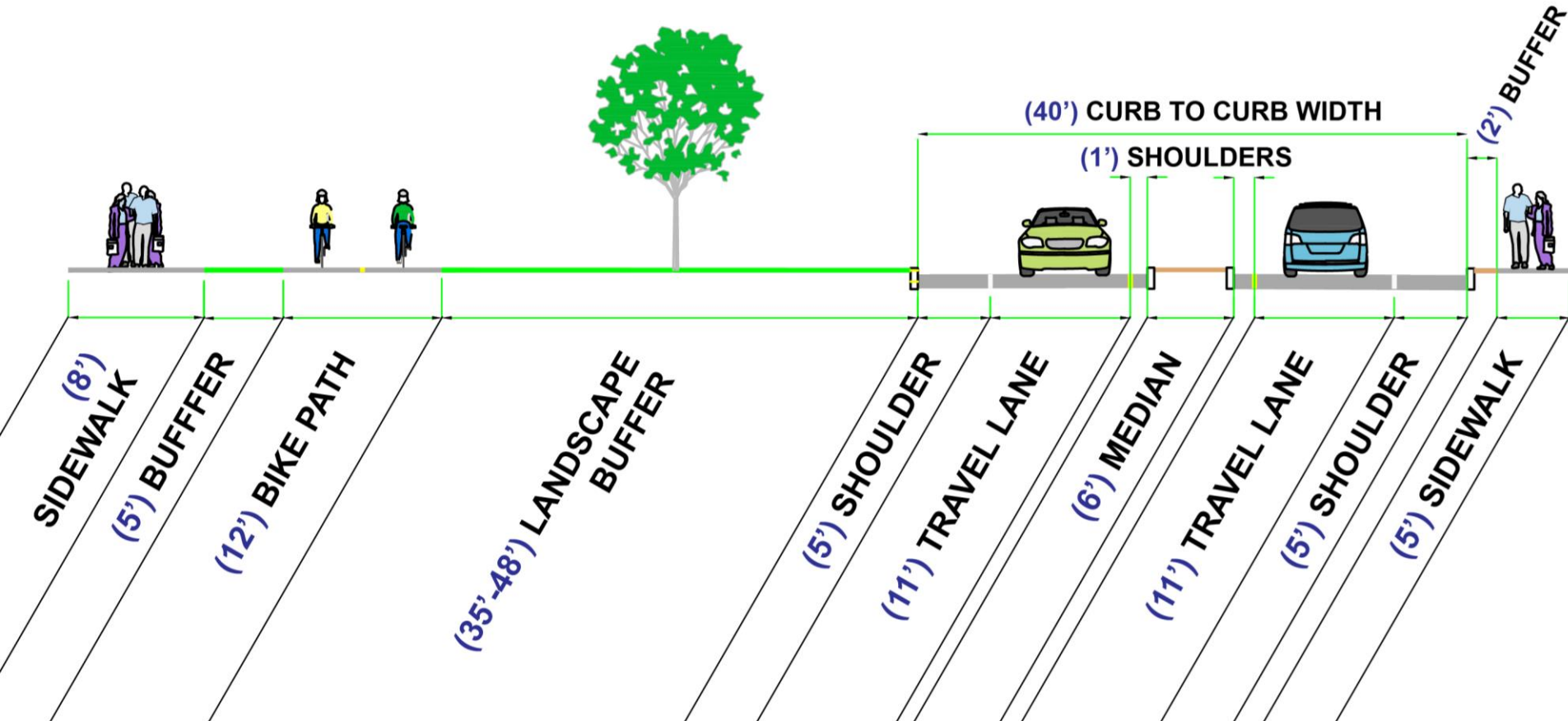
Proposed Concept Marriott to Woodbine Street

Engineers + Planners



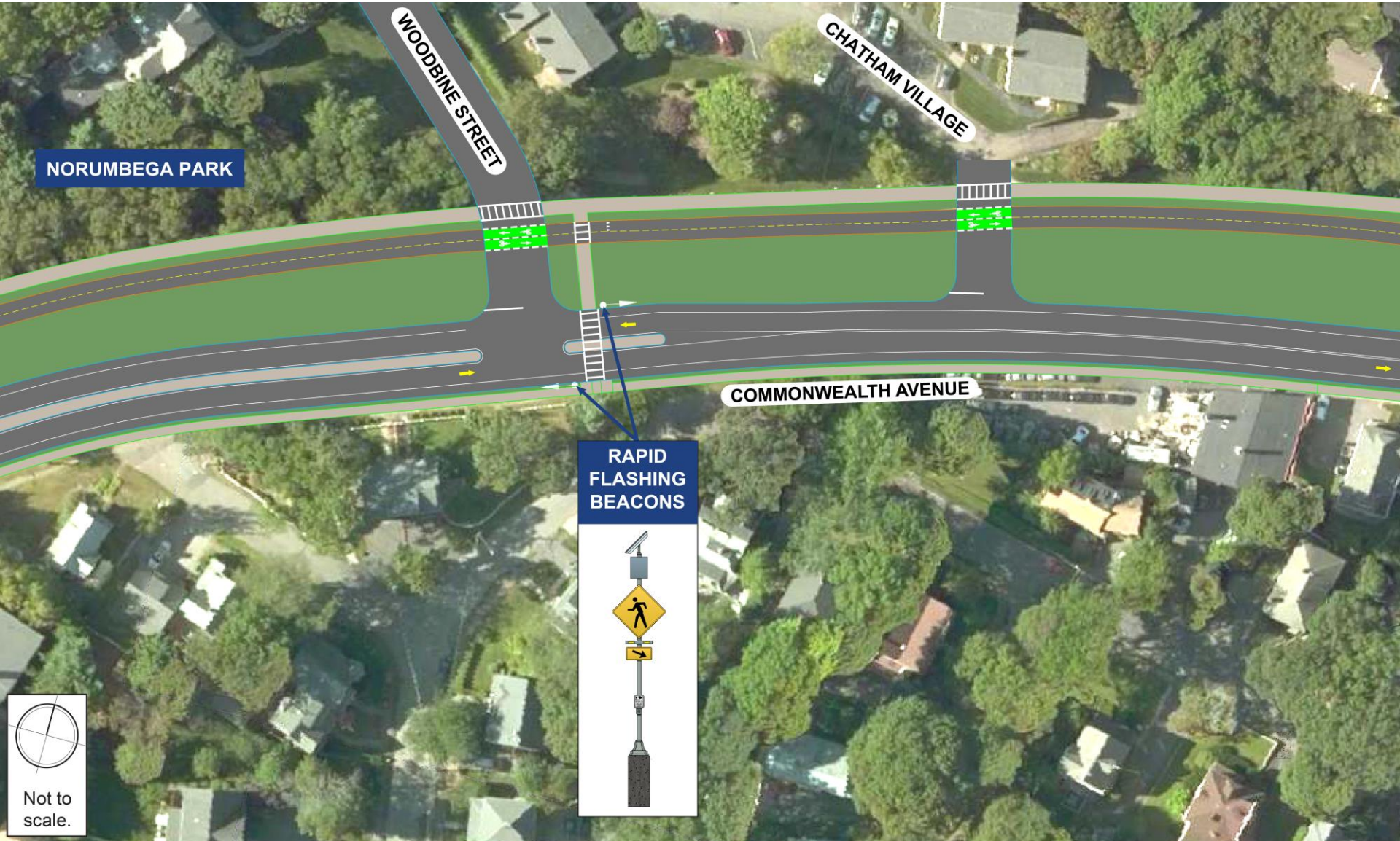
Proposed Concept Marriott to Woodbine Street

Engineers + Planners



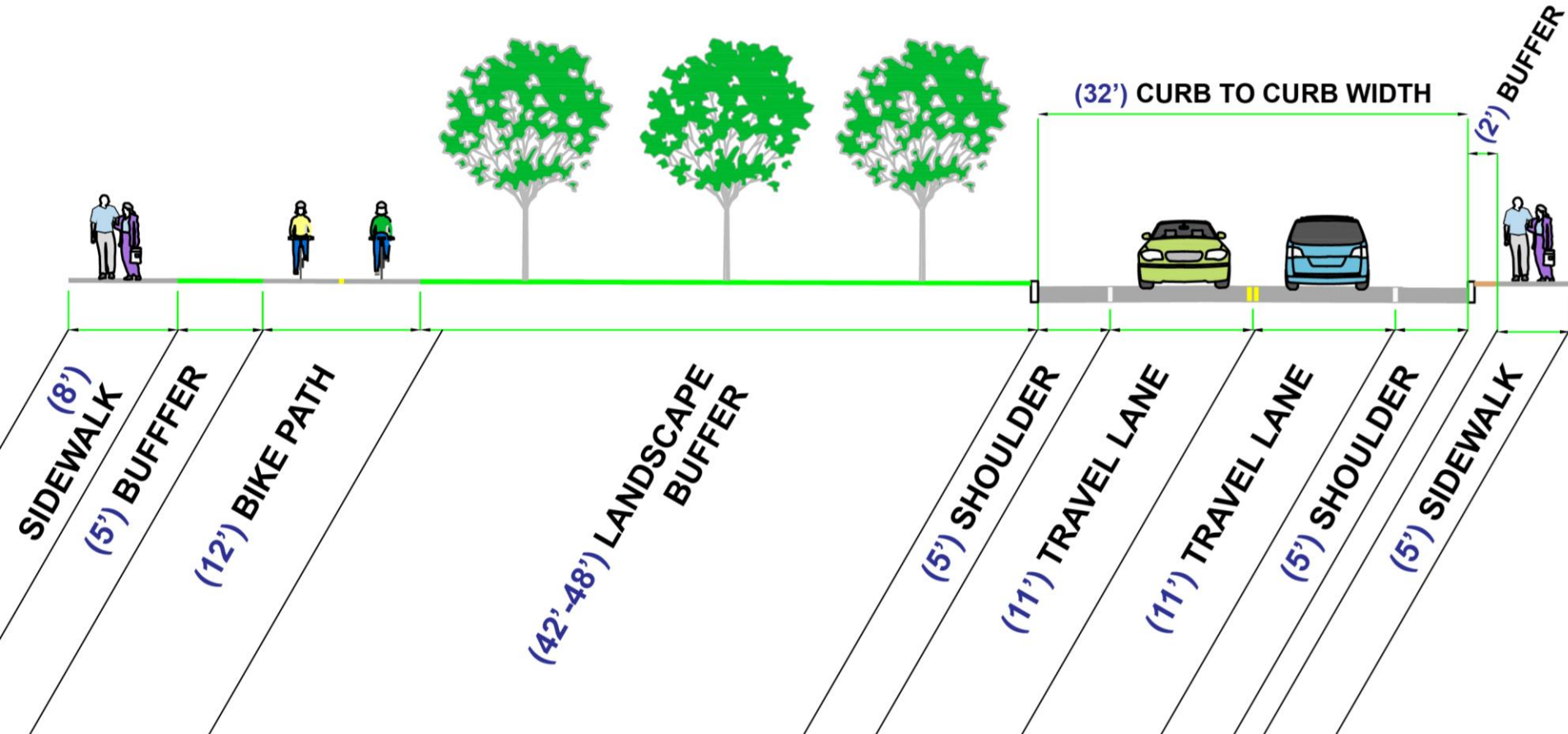
Proposed Concept Woodbine Street to Islington Road

Engineers + Planners



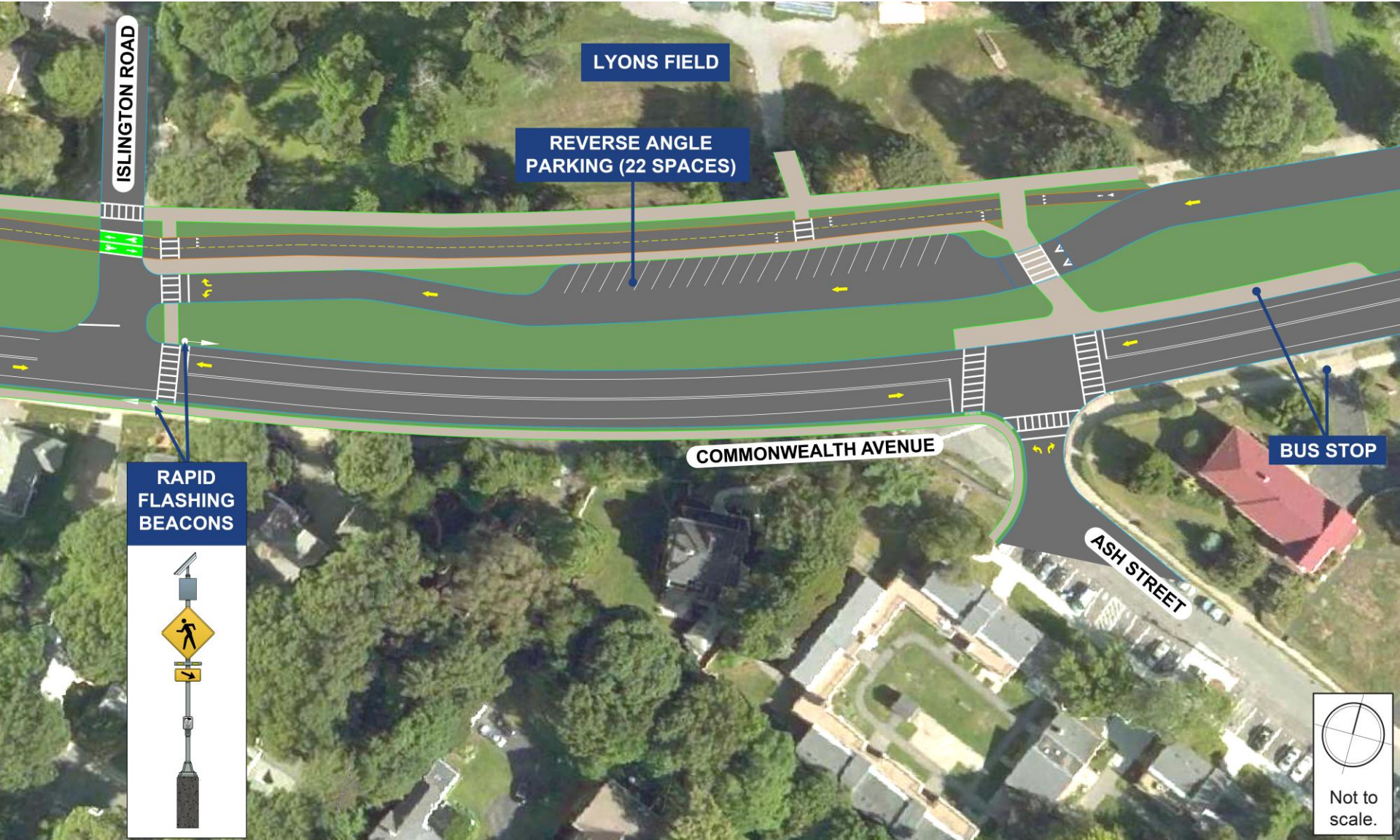
Proposed Concept Woodbine Street to Islington Road

Engineers + Planners



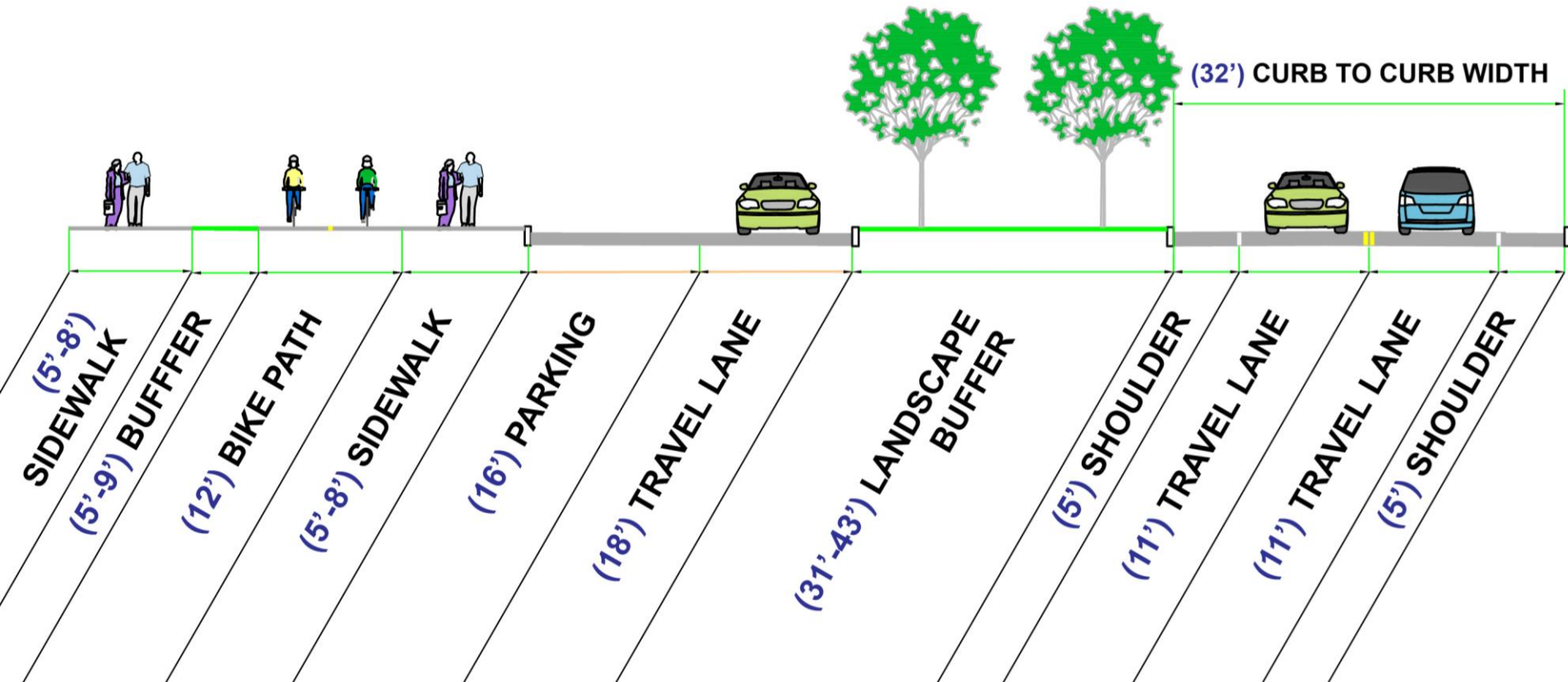
Proposed Concept #1 Islington Road to Ash Street

Engineers + Planners



Proposed Concept #1 Islington Road to Ash Street

Engineers + Planners



Existing Conditions Islington Road to Ash Street

Engineers + Planners



Proposed Concept #1

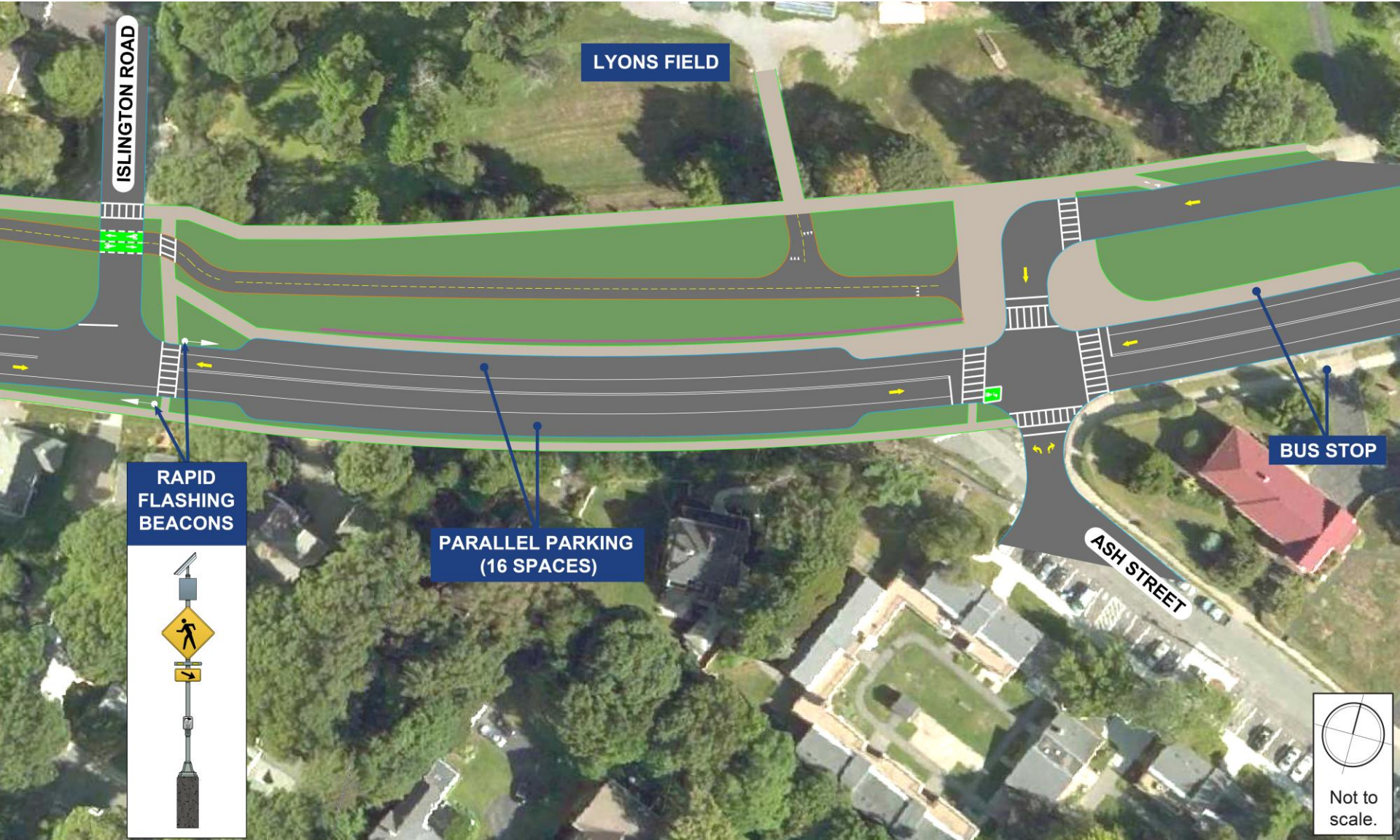
Islington Road to Ash Street

Engineers + Planners



Proposed Concept #2 Islington Road to Ash Street

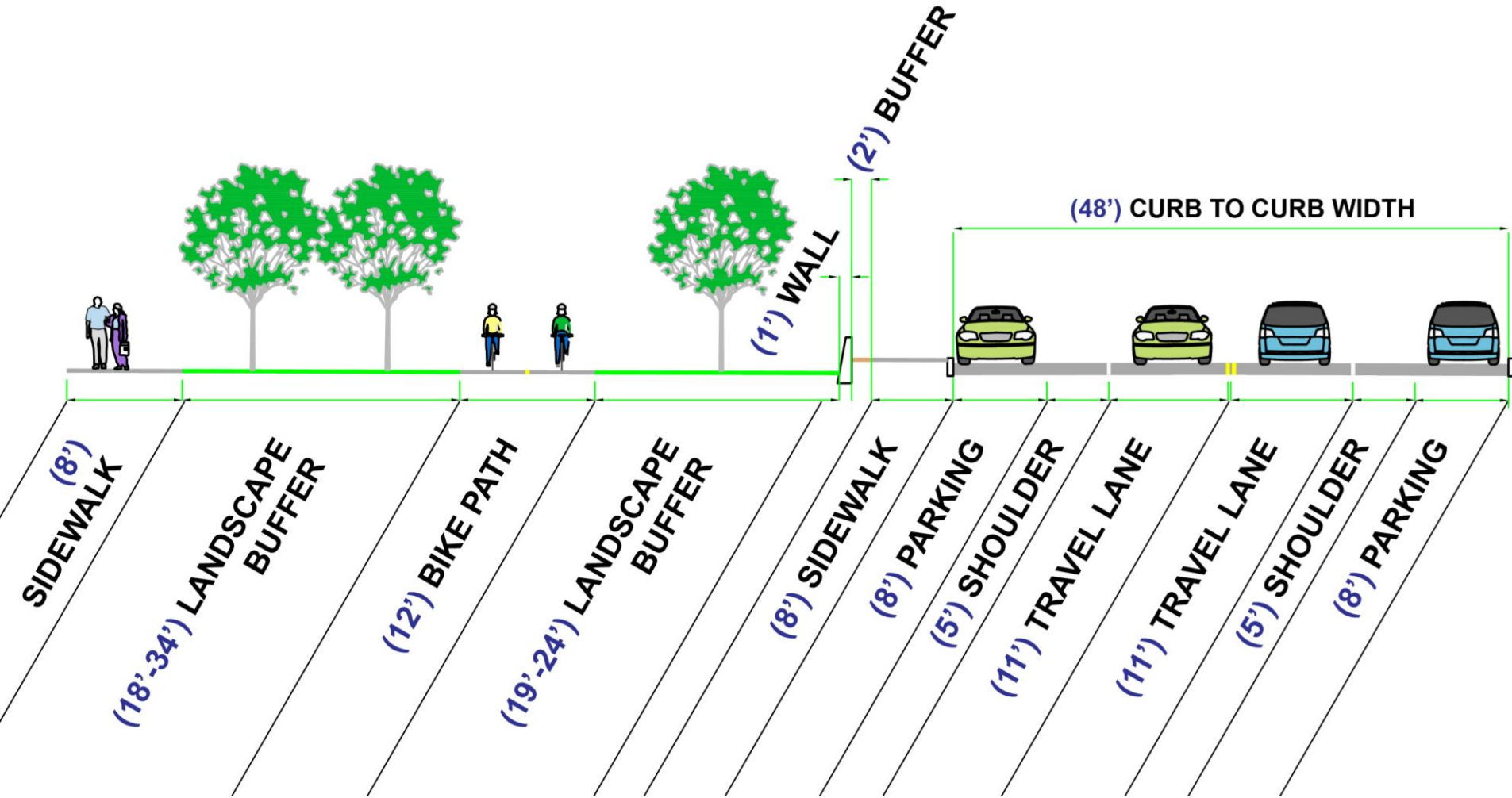
Engineers + Planners



Proposed Concept #2

Islington Road to Ash Street

Engineers + Planners



Existing Conditions Islington Road to Ash Street

Engineers + Planners



Proposed Concept #2

Islington Road to Ash Street

Engineers + Planners



Next Steps

Engineers + Planners

- **Initiate project with MassDOT**
- **Initiate City-funded design**
- **Coordinate with Metropolitan Planning Organization**



Questions?



HOWARD STEIN HUDSON

Engineers + Planners