

**CITY OF NEWTON
PURCHASING DEPARTMENT**

CONTRACT FOR PLANNING DEPARTMENT

PROJECT MANUAL:

***WETLAND TRAIL CREATION AT KESSELER WOODS CONSERVATION AREA
INVITATION FOR BID #20-87***

Pre-Bid Meeting (virtual): June 25, 2020 at 12:00 noon

Bid Opening Date: July 2, 2020 at 10:30 a.m.

JUNE 2020

Ruthanne Fuller, Mayor

CITY OF NEWTON

PROJECT MANUAL TABLE OF CONTENTS WETLAND TRAIL CREATION AT KESSELER WOODS CONSERVATION AREA

	<u>Page #</u>
Cover Page	1
Table of Contents	2
1. - Invitation for Bid	3-4
2. - Instructions to Bidders	5-8
3. - Bid Form	9-10
4. - Bidder's Qualification Forms	
▪ Bidder's Qualifications and References Form	11-12
▪ Certificate of Non-Collusion	13
▪ Certificate of Foreign Corporation	14
▪ Certification of Tax Compliance	15
▪ Debarment Letter	16
▪ IRS Form W-9	17
5. - Contract Forms (Informational only. Not required at time of bid submittal)	
▪ Contractor Contract	18-20
▪ Certificate of Authority - Corporate	21
▪ Payment Bond	22
6. - General Conditions of the Contract	23-31
7. - Wage Rate Requirements	32
▪ Prevailing Wages	33-68
▪ The Mass. Prevailing Wage Law	69
▪ Statement of Compliance	70
▪ Weekly Payroll Report Form	71
8. - Work	
▪ Summary of Work	72-80
9. - Drawings – Separate Attached File	1 page

END OF SECTION

CITY OF NEWTON
PURCHASING DEPARTMENT
INVITATION FOR BID #20-87

The City of Newton invites sealed bids in accordance with M.G.L. c.30, §39M from Contractors for:

WETLAND TRAIL CREATION AT KESSELER WOODS CONSERVATION AREA

Pre-Bid Meeting: 12:00 noon Thursday, June 25, 2020, through Zoom videoconference¹

The pre-bid meeting is **NOT** mandatory

Bids will be received until: **10:30 a.m., Thursday, July 2, 2020***

at the Purchasing Department, Room 201, Newton City Hall, 1000 Commonwealth Avenue, Newton, MA 02459. Bids will not be accepted nor may submitted bids be corrected, modified or withdrawn after the deadline for bids. Immediately following the deadline for bids, all bids received within the time specified will be publicly opened and read aloud. The Pre-Bid Meeting is **NOT** mandatory.

*** To promote the health and safety of City workers and the public, Newton City Hall is closed to the public. The City has adopted the following procedures that may affect your participation in this bid:**

1. **Bidders who wish to attend the Bid Opening can do so by telephone conference call. To attend, call 617.454.5555. When prompted, enter Participant Passcode 1220#. There will be no in person bid openings.**
2. **Bids not sent by mail or courier can only be dropped off in a locked drop box at the top of the stairs to left of the main door to City Hall. The box will be checked at the scheduled submission deadline.**
3. **Bids results will be scanned and posted as soon as practicable after the opening. Copies of bids will be available on written request.**

Contract Documents will be available online at www.newtonma.gov/bids or pick up at the Purchasing Department after **10:00 a.m., June 18, 2020.**

Bids must be submitted with one Original and two Copies.

No bids over \$80,000 shall be considered.

A bid deposit in an amount that is not less than five percent (5%) of the value of the bid, including all add alternates, is required. Bid deposits, payable to the City of Newton, shall be either in the form of a bid bond, or cash, or a certified check on, or a treasurer's or cashier's check issued by a responsible bank or trust company. The City of Newton will award the contract to the lowest eligible and responsible bidder. Please Note: this bid, in accordance with the Chapter 303 Acts of 2008, contains Price Adjustments and new Prevailing Wage requirements. All bidders are required to familiarize themselves with these terms and conditions before submitting a bid. Bidders are reminded that the bid deposit covers the City for damages when a bidder withdraws its bid after the bid submission date. **Be advised that to the extent permitted by the law the City will retain all bid deposits for withdrawn bids.**

¹ Zoom conference log in <https://us02web.zoom.us/j/81532961077>
Meeting ID: 815 3296 1077

One tap mobile +16465588656,,81532961077# US (New York)

Anticipated start date is August 1, 2020. The anticipated Completion Date is October 30, 2020. The successful bidder must be ready, willing and able to accommodate the City of Newton in the scheduling of this work.

All bids are subject to the provisions of M.G.L. c. 30, § 39M. **Wages are subject** to minimum wage rates determined by the Massachusetts Department of Labor and Industries pursuant to M.G.L. c. 149, § 26 to 27H. The schedule of wage rates applicable to this contract is included in the bidding documents. In addition, the prevailing wage schedule will be updated annually for all public construction projects lasting longer than one (1) year. You will be required to pay the rates set out in any updated prevailing wage schedule. Increases in prevailing wage schedules will not be the basis for change order requests. The successful bidder will be required to provide a Certificate of Insurance demonstrating current coverage of the type and amounts set forth in the Project Manual. The successful bidder will be required to furnish a **Labor and Materials Payment Bond** in the amount of **50%** of the contract total. Wages are paid to drivers for all “on-site” work.

The costs of any bond and any insurance required in this Invitation For Bid are the responsibility of the bidder; such costs will not be reimbursed by City and should be included in your bid.

Once you’ve downloaded this bid from the internet website (www.newtonma.gov/bids), I strongly suggest you email (purchasing@newtonma.gov) your company’s Name, address, EMAIL, phone, fax and the INVITATION FOR BID NUMBER (#20-87) and Project Title, so that we may add you to the Bidders List and you will be notified of any/all addendums.

The City will reject any and all bids in accordance with the above referenced General Laws. In addition, the City reserves the right to waive minor informalities in any or all bids, or to reject any or all bids (in whole or in part) if it be in the public interest to do so.

In the event that any person wishes to attend a bid opening or pre-bid meeting, accessible and reasonable accommodations will be provided to persons requiring assistance. If you need a reasonable accommodation, please contact the city of Newton’s ADA Coordinator, Jini Fairley, at least two business days in advance of the meeting: jfairley@newtonma.gov or (617) 796-1253. For Telecommunications Relay Service, please dial 711.

CITY OF NEWTON



Nicholas Read
Chief Procurement Officer
June 18, 2020

CITY OF NEWTON
DEPARTMENT OF PURCHASING
INSTRUCTIONS TO BIDDERS

ARTICLE 1 - BIDDER'S REPRESENTATION

- 1.1 Each General Bidder (hereinafter called the "Bidder") by making a bid (hereinafter called "bid") represents that:
1. The Bidder has read and understands the Bidding Documents, Contract Forms, General Conditions, Conditions of the Contract, General Requirements and Project Specifications (collectively, referred to as the "Contract Documents") and the bid is made in accordance therewith.
 2. The Bidder has visited the work site and is familiar with the local conditions under which the work has to be performed.
- 1.2 Failure to so examine the Contract Documents or visit the work site will not relieve any Bidder from any obligation under the bid as submitted.

ARTICLE 2 - REQUEST FOR INTERPRETATION

- 2.1 Bidders shall promptly notify the City of any ambiguity, inconsistency, or error which they may discover upon examination of the Contract Documents, the site, and local conditions.
- 2.2 Bidders requiring clarification or interpretation of the Contract Documents shall make a written request to the *Chief Procurement Officer*, at purchasing@newtonma.gov or via facsimile (617) 796-1227. The City will only answer such requests if received **by Friday, June 26, 2020 at 12:00 noon**. In the event that the bid opening date is changed, the deadline for informational requests may also change as provided in an addendum issued by the City.
- 2.3 Interpretation, correction, or change in the Contract Documents will be made by addendum which will become part of the Contract Documents. The City will not be held accountable for any oral communication.
- 2.4 Addenda will be emailed to every individual or firm on record as having taken a set of Contract Documents. Addenda will be emailed to every individual or firm on record as having taken a set of Contract Documents. Receipt of all addenda issued must be acknowledged in the Bid Form. **YOUR FAILURE TO ACKNOWLEDGE ALL ADDENDA MAY RESULT IN YOUR BID BEING REJECTED AS NON-RESPONSIVE.**
- 2.5 Copies of addenda will be made available for inspection at the location listed in the Invitation for Bids where Contract Documents are on file, in addition to being available online at www.newtonma.gov/bids.
- 2.6 Bidders or proposers contacting ANY CITY EMPLOYEE regarding an Invitation for Bid (IFB) or a Request for Proposal (RFP), outside of the Purchasing Department, once an IFB or RFP has been released, may be disqualified from the procurement process.
- 2.7 Bidders downloading information off the internet web site are solely responsible for obtaining any addenda prior to the bid opening. If the bidder makes itself known to the Purchasing Department, at purchasing@newtonma.gov or via facsimile (617) 796-1227, it shall be placed on the bidder's list. Bidders must provide the Purchasing Department with their company's name, street address, city, state, zip, phone, fax, email address and **INVITATION FOR BID #20-87**.

ARTICLE 3 - MBE PARTICIPATION

- 3.1 Notice is hereby given that the Mayor's Affirmative Action Plan for the City of Newton in effect at the time of this solicitation is applicable to all construction contracts in excess of \$10,000.00.
- 3.2 Notice is hereby given that the City of Newton Minority/Women Business Enterprise Plan and the Supplemental Equal Employment Opportunity Anti-Discrimination and Affirmative Action Program in effect at the time of this solicitation are applicable to all City contracts for goods and services in excess of \$50,000.00.
- 3.3 Copies of the Plans and Program referred to in Sections 3.1 and 3.2 are available at: www.newtonma.gov/purchasing.

ARTICLE 4 - PREPARATION AND SUBMISSION OF BIDS

- 4.1 Bids shall be submitted on the "Bid Form #20-87," attached.
- 4.2 All entries on the Bid Form shall be made by typewriter or in ink.
- 4.3 Where so indicated on the Bid Form, sums shall be expressed in both words and figures. Where there is a discrepancy between the bid sum expressed in words and the bid sum expressed in figures, the words shall control.
- 4.4 The Bid shall be enclosed in a sealed envelope with the following plainly marked on the outside:
- * GENERAL BID FOR: **#20-87**
 - * TYPE OF PROCUREMENT: **Wetland Trail Creation at Kessler Woods Conservation Area**
 - * BIDDER'S NAME, BUSINESS ADDRESS, AND PHONE NUMBER
- 4.5 Date and time for receipt of bids is set forth in the IFB.
- 4.6 Timely delivery of a bid at the location designated shall be the full responsibility of the Bidder. In the event that Newton City Hall is closed on the date or at the time that bids are due, the date and time for receipt of bids shall be on the next business day following that the Newton City Hall is open.
- 4.7 Bids shall be submitted with one **original** and two **copies**.
- 4.8 Be advised that a new Massachusetts law has been enacted that required all employees who work on Massachusetts public works construction sites must have no less than 10 hours of OSHA-approved safety and health training. *See* M.G.L. C. 30, §39R and M.G.L. C. 149, §44E.
1. This requirement will apply to any general bid or sub bid submitted.
 2. This law directs the Massachusetts Attorney General to restrain the award of construction contracts to any Vendor who is in violation to this requirement and to restrain the performance of these contracts by non-complying Vendors.
 3. The Vendor and all subVendors on this project will be required to provide certification of compliance with this requirement. Non-compliance with this law will disqualify you from bidding on public contracts.

ARTICLE 5 - ALTERNATES

- 5.1 Each Bidder shall acknowledge alternates (if any) in Section C on the Bid Form.
- 5.2 In the event an alternate does not involve a change in the amount of the base bid, the Bidder shall so indicated by writing "No Change", or "N/C" or "0" in the space provided for that alternate.
- 5.3 Bidders shall enter on the Bid Form a single amount for each alternate which shall consist of supplies to be provided by the Vendor.
- 5.4 The low Bidder will be determined on the basis of the sum of the base bid and the accepted alternates.

ARTICLE 6 - WITHDRAWAL OF BIDS

- 6.1 Any bid may be withdrawn prior to the time designated for receipt of bids on written or electronic request. Electronic withdrawal of bids must be confirmed over the Bidder's signature by written notice postmarked on or before the date and time set for receipt of bids.
- 6.2 Withdrawn bids may be resubmitted up to the time designated for the receipt of bids.
- 6.3 No bids may be withdrawn after the opening of the bids.

ARTICLE 7 - CONTRACT AWARD

- 7.1 The City is soliciting a Total Bid Price set forth in the Bid Form on pp. 9-10. It is the City's intent to award and one (1) contract responsible and eligible bidder offering the lowest Total Bid Price. A contract will be awarded within sixty (60) days, Saturdays, Sundays, and legal holidays excluded, after the opening of bids. The City reserves the right to waive minor informalities in or to reject any or all Bids if it be in the public interest to do so.
- 7.2 The City reserves the right to waive minor informalities in or to reject any or all Bids if it be in the public interest to do so.
- 7.3 The City reserves the right to reject any bidder who has failed to pay any local taxes, fees, assessments, betterments, or any other municipal charge, unless the bidder has a pending abatement application or has entered into a payment agreement with the collector-treasurer.
- 7.4 As used herein, the term "lowest eligible and responsible Bidder" shall mean the Bidder (1) whose bid is the lowest of those bidders possessing the skill, ability and integrity necessary for the faithful performance of the work; (2) who has met all the requirements of the invitation for bids; (3) who shall certify that he is able to furnish labor that can work in harmony with all other elements of labor employed or to be employed in the work; (4) who, where the provisions of section eight B of chapter twenty-nine apply, shall have been determined to be qualified thereunder.
- 7.5 Subsequent to the award and within five (5) days, Saturday, Sundays and legal holidays excluded, after the prescribed forms are presented for signature, the successful Bidder shall execute and deliver to the City a contract in the form included in the Contract Documents in such number of counterparts as the City may require.
- 7.6 In the event that the City receives low bids in identical amount from two or more responsive and responsible Bidders, the City shall select the successful Bidder by a blind selection process such as flipping a coin or drawing names from a hat. The low Bidders who are under consideration will be invited to attend and observe the selection process.

ARTICLE 8 - TAXES

- 8.1 The Bidder shall not include in this bid any tax imposed upon the sale or rental of tangible personal property in this Commonwealth, such as any and all building materials, supplies, services and equipment required to complete the work.
- 8.2 The City is exempt from payment of the Massachusetts Sales Tax, and the Bidder shall not include any sales tax on its bid. The City's exemption Number is E-046-001-404.

ARTICLE 9 – PROPRIETARY SPECIFICATIONS

- 9.1 The City has used a proprietary specification to describe the supply listed in the specifications. Such specifications are permitted under M.G.L. c. 30, §39M(b), provided that the City states in writing that use of the proprietary specification is in its best interest and that it will accept an "equal" of the item specified. An item is considered equal if (i) it is at least equal in quality, durability, appearance, strength, and design; (ii) will perform the intended function at least equally; and (iii) conforms substantially, even with deviations, to the detailed requirements contained in the specifications. In the event that the Bidder wishes to substitute an equal item, it may do so either in its bid or proposal or after the contract is awarded but before a contract is executed, it being understood that the award shall be conditioned on the Bidder providing the item originally specified or an equal item accepted by the City and identified in the contract. In no event shall the Bidder be entitled to offer, or the City obliged to consider, the substitution of an item as equal after execution of a contract. In the event the Bidder substitutes or attempts to substitute an "equal" item after that date, it shall be in breach thereof and be liable for actual and consequential damages resulting from its failure to perform as agreed. The City shall have the sole right to determine whether or not said item is equal.
- 9.2 The required determination and justification have been duly prepared, and a copy may be requested in accordance with the Massachusetts Public Records Law, M.G.L. c. 66, §10.

ARTICLE 10 – ENVIRONMENTALLY PREFERABLE PRODUCTS

- 10.1 The City encourages environmentally preferable products, i.e., products or services that have less negative or more positive effects on human health and the environment when compared with competing products or services that serve the same purpose. The city encourages bidders to describe, in the space provided on the Bid Form, the environmental attributes of its goods or services throughout the entire life-cycle, including manufacture, use and disposition.

This information may include multiple environmental considerations such as natural resource use, recycled content, energy and water efficiency, greenhouse gas emissions, impact on climate change, packaging, hazardous material use, and health and safety impacts on workers, consumers and the community. If you do not currently assess such attributes, please indicate that. However you respond, the City will not take your information into account in evaluating bid proposals.

- 10.2 Bidders are encouraged also to provide information related to steps they take internally to (a) identify any positive or negative environmental attributes of products or services they offer, as specified above, and (b) ensure that those attributes are being addressed as part of operations.

END OF SECTION

**CITY OF NEWTON
DEPARTMENT OF PURCHASING
BID FORM #20-87**

A. The undersigned proposes to furnish all labor, materials, tools, equipment, transportation and supervision required to perform all work in accordance with the Project Manual prepared by the City of Newton entitled:

WETLAND TRAIL CREATION AT KESSELER WOODS CONSERVATION AREA

B. This bid includes addenda number(s) _____, _____, _____, _____,

C. The Proposed Contract: Price to meet the Scope of Work:

1. **TOTAL BID PRICE**

_____ DOLLARS (\$_____).
(The figure inserted above shall be the Total Bid Price amount.)

COMPANY _____

D. The undersigned has completed and submits herewith the following documents:

- Bidder's Qualifications and References Form, 2 pages
- Certificate of Non-Collusion, 1 page
- Certificate of Foreign Corporation (if applicable), 1 page
- Certification of Tax Compliance
- Debarment Letter, 1 page
- IRS Form W-9, 1 page
- A five percent (5%) bid deposit/bid guarantee
- Signed Bid Form, 2 pages

E. Prompt Payment Discounts. Bidders are encouraged to offer discounts in exchange for an expedited payment. Payments may be issued earlier than the general goal of within 30 days of receipt of the invoice only when in exchange for discounted prices. Discounts will not be considered in determining the lowest responsible bidder.

Prompt Payment Discount _____% _____ Days
Prompt Payment Discount _____% _____ Days
Prompt Payment Discount _____% _____ Days

F. The undersigned agrees that, if s/he is selected as general contractor, s/he will within five days, Saturdays, Sundays and legal holidays excluded, after presentation thereof by the awarding authority, execute a contract in accordance with the terms of this bid and furnish a labor and materials or payment bond, each of a surety company qualified to do business under the laws of the Commonwealth and satisfactory to the awarding authority and each in the sum of the contract price, the premiums for which are to be paid by the general contractor and are included in the contract price.

The undersigned hereby certifies that s/he is able to furnish labor that can work in harmony with all other elements of labor employed or to be employed on the work and that s/he will comply fully with all laws and regulations applicable to awards made subject to section forty-four A of M.G.L. Chapter 30, s 39M.

The undersigned certifies that he is able to furnish labor that can work in harmony with all other elements of labor employed or to be employed in the work; (2) that all employees to be employed at the worksite will have successfully completed a course in construction safety and health approved by the United States Occupational Safety and Health Administration ("OSHA") that is at least 10 hours in duration at the time the employee begins work and who shall furnish documentation of successful completion of said course with the first certified payroll report for each employee;

and (3) that all employees to be employed in the work subject to this bid have successfully completed a course in construction safety and health approved by the United States OSHA that is at least 10 hours in duration. The undersigned understands that any employee found on a worksite subject to this section without documentation of successful completion of a course in construction safety and health approved by the United States Occupational Safety and Health Administration that is at least 10 hours in duration shall be subject to immediate removal.

The undersigned further certifies under the penalties of perjury that this bid is in all respects bona fide, fair and made without collusion or fraud with any other person. As used in this subsection the word "person" shall mean any natural person, joint venture, partnership, corporation or other business or legal entity. The undersigned further certifies under penalty of perjury that the said undersigned is not presently debarred from doing public construction work in the Commonwealth under the provisions of section twenty-nine F of chapter twenty-nine, or any other applicable debarment provisions of any other chapter of the General Laws or any rule or regulation promulgated thereunder.

Date _____

(Name of General Bidder)

BY: _____

(Printed Name and Title of Signatory)

(Business Address)

(City, State Zip)

(Telephone / FAX)

E-mail Address

NOTE: If the bidder is a corporation, indicate state of incorporation under signature, and affix corporate seal; if a partnership, give full names and residential addresses of all partners; if an individual, give residential address if different from business address; and, if operating as a d/b/a/ give full legal identity. Attach additional pages as necessary.

END OF SECTION

CITY OF NEWTON

BIDDER'S QUALIFICATIONS AND REFERENCES FORM

All questions must be answered, and the data given must be clear and comprehensive. Please type or print legibly. If necessary, add additional sheet for starred items. This information will be utilized by the City of Newton for purposes of determining bidder responsiveness and responsibility with regard to the requirements and specifications of the Contract.

- 1. FIRM NAME: _____
- 2. WHEN ORGANIZED: _____
- 3. INCORPORATED? _____ YES _____ NO DATE AND STATE OF INCORPORATION: _____
- 4. IS YOUR BUSINESS A **MBE**? _____ YES _____ NO **WBE**? _____ YES _____ NO or **MWBE**? _____ YES _____ NO
- * 5. LIST ALL CONTRACTS CURRENTLY ON HAND, SHOWING CONTRACT AMOUNT AND ANTICIPATED DATE OF COMPLETION:

- * 6. HAVE YOU EVER FAILED TO COMPLETE A CONTRACT AWARDED TO YOU?
_____ YES _____ NO
IF YES, WHERE AND WHY?

- * 7. HAVE YOU EVER DEFAULTED ON A CONTRACT? _____ YES _____ NO
IF YES, PROVIDE DETAILS.

- * 8. LIST YOUR VEHICLES/EQUIPMENT AVAILABLE FOR THIS CONTRACT:

- * 9. IN THE SPACES FOLLOWING, PROVIDE INFORMATION REGARDING CONTRACTS COMPLETED BY YOUR FIRM SIMILAR IN NATURE TO THE PROJECT BEING BID. A MINIMUM OF FOUR (4) CONTRACTS SHALL BE LISTED. PUBLICLY BID CONTRACTS ARE PREFERRED, BUT NOT MANDATORY.

PROJECT NAME: _____
OWNER: _____
CITY/STATE: _____
DOLLAR AMOUNT: \$ _____ DATE COMPLETED: _____
PUBLICLY BID? _____ YES _____ NO

TYPE OF WORK?: _____
CONTACT PERSON: _____ TELEPHONE #: (____) _____
CONTACT PERSON'S RELATION TO PROJECT?: _____
(i.e., contract manager, purchasing agent, etc.)

PROJECT NAME: _____
OWNER: _____
CITY/STATE: _____
DOLLAR AMOUNT: \$ _____ DATE COMPLETED: _____
PUBLICLY BID? _____ YES _____ NO
TYPE OF WORK?: _____
CONTACT PERSON: _____ TELEPHONE #: (____) _____
CONTACT PERSON'S RELATION TO PROJECT?: _____
(i.e., contract manager, purchasing agent, etc.)

PROJECT NAME: _____
OWNER: _____
CITY/STATE: _____
DOLLAR AMOUNT: \$ _____ DATE COMPLETED: _____
PUBLICLY BID? _____ YES _____ NO
TYPE OF WORK?: _____
CONTACT PERSON: _____ TELEPHONE #: (____) _____
CONTACT PERSON'S RELATION TO PROJECT?: _____
(i.e., contract manager, purchasing agent, etc.)

PROJECT NAME: _____
OWNER: _____
CITY/STATE: _____
DOLLAR AMOUNT: \$ _____ DATE COMPLETED: _____
PUBLICLY BID? _____ YES _____ NO
TYPE OF WORK?: _____
CONTACT PERSON: _____ TELEPHONE #: (____) _____
CONTACT PERSON'S RELATION TO PROJECT?: _____
(i.e., contract manager, purchasing agent, etc.)

10. The undersigned certifies that the information contained herein is complete and accurate and hereby authorizes and requests any person, firm, or corporation to furnish any information requested by the City of Newton in verification of the recitals comprising this statement of Bidder's qualifications and experience.

DATE: _____ BIDDER: _____

SIGNATURE: _____

PRINTED NAME: _____ TITLE: _____

END OF SECTION

CERTIFICATE OF NON-COLLUSION

The undersigned certifies under penalties of perjury that this bid or proposal has been made and submitted in good faith and submitted in good faith and without collusion or fraud with any other person. As used in this certification, the word “person” shall mean any natural person, business, partnership, corporation, union, committee club, or other organization, entity, or group or individuals.

(Signature of individual)

Name of Business

CERTIFICATE OF FOREIGN CORPORATION

The undersigned hereby certifies that it has been duly established, organized, or chartered as a corporation under the laws of:

(Jurisdiction)

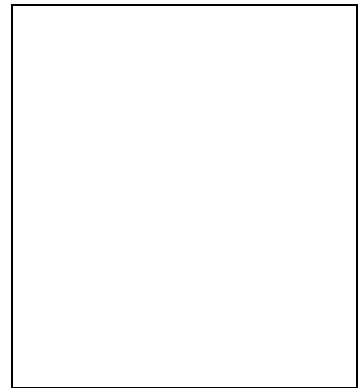
The undersigned further certifies that it has complied with the requirements of M.G.L. c. 30, §39L (if applicable) and with the requirements of M.G.L. c. 156D, §15.03 relative to the registration and operation of foreign corporations within the Commonwealth of Massachusetts.

Name of person signing proposal

Signature of person signing proposal

Name of Business (Please Print or Type)

Affix Corporate Seal here



CERTIFICATION OF TAX COMPLIANCE

Pursuant to M.G.L. c.62C, §49A and requirements of the City, the undersigned acting on behalf of the Contractor certifies under the penalties of perjury that the Contractor is in compliance with all laws of the Commonwealth relating to taxes including payment of all local taxes, fees, assessments, betterments and any other local or municipal charges (unless the Contractor has a pending abatement application or has entered into a payment agreement with the entity to which such charges were owed), reporting of employees and contractors, and withholding and remitting child support.*

**Signature of Individual (Mandatory)

*** Contractor's Social Security Number
(Voluntary) or Federal Identification Number

Print Name: _____

Date: _____

OR

Company Name
(Corporation, Partnership, LLC, etc.)

By: _____
**Corporate Officer (Mandatory)

Print Name: _____

Date: _____

- * The provision in this Certification relating to child support applies only when the Contractor is an individual.
- ** Approval of a contract or other agreement will not be granted until the City receives a signed copy of this Certification.
- *** Your social security number may be furnished to the Massachusetts Department of Revenue to determine whether you have met tax filing or tax payment obligations. Providers who fail to correct their non-filing or delinquency will not have a contract or other agreement issued, renewed, or extended.



Mayor
Ruthanne Fuller

Purchasing Department

Nicholas Read *Chief Procurement Officer*
1000 Commonwealth Avenue
Newton Centre, MA 02459-1449
purchasing@newtonma.gov

Telephone
(617) 796-1220
Fax:
(617) 796-1227
TDD/TTY
(617) 796-1089

Date

Vendor

Re: Debarment Letter for Invitation For Bid #20-87

As a potential vendor on the above contract, the City requires that you provide a debarment/suspension certification indicating that you are in compliance with the below Federal Executive Order. Certification can be done by completing and signing this form.

Debarment:

Federal Executive Order (E.O.) 12549 “Debarment and Suspension“ requires that all contractors receiving individual awards, using federal funds, and all sub-recipients certify that the organization and its principals are not debarred, suspended, proposed for debarment, declared ineligible, or voluntarily excluded by any Federal department or agency from doing business with the Federal Government.

I hereby certify under pains and penalties of perjury that neither I nor any principal(s) of the Company identified below is presently debarred, suspended, proposed for debarment, declared ineligible, or voluntarily excluded from participation in this transaction by any federal department or agency.

PHONE _____ FAX _____
EMAIL _____

Signature

Date

If you have questions, please contact Nicholas Read, Chief Procurement Officer at (617) 796-1220.

Request for Taxpayer Identification Number and Certification

**Give form to the
requester. Do not
send to the IRS.**

Print or type See Specific instructions on page 2.	Name (as shown on your income tax return)	
	Business name, if different from above	
	Check appropriate box: <input type="checkbox"/> Individual/Sole proprietor <input type="checkbox"/> Corporation <input type="checkbox"/> Partnership <input type="checkbox"/> Limited liability company. Enter the tax classification (D=disregarded entity, C=corporation, P=partnership) ▶ <input checked="" type="checkbox"/> Exempt payee <input type="checkbox"/> Other (see instructions) ▶	
	Address (number, street, and apt. or suite no.)	Requester's name and address (optional)
	City, state, and ZIP code	
List account number(s) here (optional)		

Part I Taxpayer Identification Number (TIN)

Enter your TIN in the appropriate box. The TIN provided must match the name given on Line 1 to avoid backup withholding. For individuals, this is your social security number (SSN). However, for a resident alien, sole proprietor, or disregarded entity, see the Part I instructions on page 3. For other entities, it is your employer identification number (EIN). If you do not have a number, see *How to get a TIN* on page 3.

Note. If the account is in more than one name, see the chart on page 4 for guidelines on whose number to enter.

	Social security number
	or
	Employer identification number

Part II Certification

Under penalties of perjury, I certify that:

- The number shown on this form is my correct taxpayer identification number (or I am waiting for a number to be issued to me), and
- I am not subject to backup withholding because: (a) I am exempt from backup withholding, or (b) I have not been notified by the Internal Revenue Service (IRS) that I am subject to backup withholding as a result of a failure to report all interest or dividends, or (c) the IRS has notified me that I am no longer subject to backup withholding, and
- I am a U.S. citizen or other U.S. person (defined below).

Certification instructions. You must cross out item 2 above if you have been notified by the IRS that you are currently subject to backup withholding because you have failed to report all interest and dividends on your tax return. For real estate transactions, item 2 does not apply. For mortgage interest paid, acquisition or abandonment of secured property, cancellation of debt, contributions to an individual retirement arrangement (IRA), and generally, payments other than interest and dividends, you are not required to sign the Certification, but you must provide your correct TIN. See the instructions on page 4.

Sign Here	Signature of U.S. person ▶	Date ▶	Name
------------------	----------------------------	--------	------

General Instructions

Section references are to the Internal Revenue Code unless otherwise noted.

Purpose of Form

A person who is required to file an information return with the IRS must obtain your correct taxpayer identification number (TIN) to report, for example, income paid to you, real estate transactions, mortgage interest you paid, acquisition or abandonment of secured property, cancellation of debt, or contributions you made to an IRA.

Use Form W-9 only if you are a U.S. person (including a resident alien), to provide your correct TIN to the person requesting it (the requester) and, when applicable, to:

- Certify that the TIN you are giving is correct (or you are waiting for a number to be issued),
- Certify that you are not subject to backup withholding, or
- Claim exemption from backup withholding if you are a U.S. exempt payee. If applicable, you are also certifying that as a U.S. person, your allocable share of any partnership income from a U.S. trade or business is not subject to the withholding tax on foreign partners' share of effectively connected income.

Note. If a requester gives you a form other than Form W-9 to request your TIN, you must use the requester's form if it is substantially similar to this Form W-9.

Definition of a U.S. person. For federal tax purposes, you are considered a U.S. person if you are:

- An individual who is a U.S. citizen or U.S. resident alien,
- A partnership, corporation, company, or association created or organized in the United States or under the laws of the United States,
- An estate (other than a foreign estate), or
- A domestic trust (as defined in Regulations section 301.7701-7).

Special rules for partnerships. Partnerships that conduct a trade or business in the United States are generally required to pay a withholding tax on any foreign partners' share of income from such business. Further, in certain cases where a Form W-9 has not been received, a partnership is required to presume that a partner is a foreign person, and pay the withholding tax. Therefore, if you are a U.S. person that is a partner in a partnership conducting a trade or business in the United States, provide Form W-9 to the partnership to establish your U.S. status and avoid withholding on your share of partnership income.

The person who gives Form W-9 to the partnership for purposes of establishing its U.S. status and avoiding withholding on its allocable share of net income from the partnership conducting a trade or business in the United States is in the following cases:

- The U.S. owner of a disregarded entity and not the entity,

CONTRACT FORMS

The awarded bidder will be required to complete and submit documents substantially similar in form to the following.

These forms may need to be modified on account of changed circumstances, and are provided for informational purposes only.

CITY - CONTRACTOR AGREEMENT

CONTRACT NO. C -

THIS AGREEMENT made this ___ day of _____ in the year Two Thousand and Twenty by and between the CITY OF NEWTON, a municipal corporation organized and existing under the laws of the Commonwealth of Massachusetts, hereinafter referred to as the CITY, acting through its Chief Procurement Officer, but without personal liability to him, and hereinafter referred to as the CONTRACTOR.

The parties hereto for the considerations hereinafter set forth agree as follows:

ARTICLE 1. STATEMENT OF WORK. The Contractor shall furnish all labor, materials, and equipment and perform all work required in strict accordance with the Contract Documents for the following project:

WETLAND TRAIL CREATION AT KESSELER WOODS CONSERVATION AREA

ARTICLE 2. TIME OF COMPLETION. The Contractor shall commence work under this Contract on the date specified in the written notice of the City to proceed and shall fully complete all work hereunder within the time specified in the Summary of Work and Specific Work Requirements of the Project Manual. The anticipated Completion Date is October 31, 2020. Time is of the essence with regard to this contract. Failure to complete within the time specified shall be subject to the assessment of liquidated damages in accordance with the provisions contained in the Project Manual.

ARTICLE 3. THE CONTRACT PRICE. The City shall pay the Contractor for the full and satisfactory performance of the Contract, in current funds a sum not to exceed:

ARTICLE 4. CONTRACT DOCUMENTS. The Contract Documents consist of the following documents which are either attached to this Agreement or are incorporated herein by reference:

- a. This CITY-CONTRACTOR Agreement;
- b. The City's Invitation For Bid #20-87 issued by the Purchasing Department;
- c. The Project Manual for: **Wetland Trail Creation at Kessler Woods Conservation Area** including the Instructions to Bidders; General Conditions; Special Conditions; MWBE/AA Requirements, Wage Rate Requirements and Wage Rate Schedule(s) including any updated prevailing wage rate schedules if applicable; The Supplementary Special Conditions; General Requirements and Project Specifications; and Drawings, if included or referenced therein;
- d. Addenda Number(s) _____;
- e. The Bid Response of the CONTRACTOR submitted for this Project and accompanying documents and certifications;
- f. Certificate(s) of Insurance and surety bond(s) submitted by the CONTRACTOR in connection with this Project;
- g. Duly authorized and executed Amendments, Change Orders or Work Orders issued by the CITY after execution of this CITY-CONTRACTOR Agreement.

This CITY-CONTRACTOR Agreement, together with the other documents enumerated in this Article, constitute the entire Agreement between the CITY and the CONTRACTOR. The CONTRACTOR represents that its bid was made without condition, qualification or reservation of any kind, except upon the written acknowledgement and consent of the CITY.

ARTICLE 5. ALTERNATES. The following Alternates have been accepted and their costs are included in the Contract Price stated in Article 3 of this Agreement:

Alternates: _____

ARTICLE 6. APPLICABLE STATUTES. All applicable federal, state and local laws and regulations are incorporated herein by reference and the Contractor agrees to comply with same.

IN WITNESS WHEREOF, the parties have caused this instrument to be executed under seal the day and year first above written.

CONTRACTOR

CITY OF NEWTON

By _____

By _____

Chief Procurement Officer

Print Name _____

Date _____

Title _____

Date _____

By _____

Director of Planning and Development Department

Affix Corporate Seal Here

Date _____

Certified that City funds are available in the following account number:
6300 255601 (01-25500H9B) & 0111471-584100

Approved as to Legal Form and Character

By _____

Associate City Solicitor

I further certify that the Mayor, or her designee, is authorized to execute contracts and approve change orders.

Date _____

By _____

Comptroller of Accounts

CONTRACT & BONDS ARE APPROVED

Date _____

By _____

Mayor or her designee

Date _____

CERTIFICATE OF AUTHORITY - CORPORATE

1. I hereby certify that I am the Clerk/Secretary of _____
(insert full name of Corporation)
2. corporation, and that _____
(insert the name of officer who signed the **contract and bonds**.)
3. is the duly elected _____
(insert the title of the officer in line 2)
4. of said corporation, and that on _____
(insert a date that is ***ON OR BEFORE*** the date the officer signed the **contract and bonds**.)

at a duly authorized meeting of the Board of Directors of said corporation, at which all the directors were present or waived notice, it was voted that

5. _____ the _____
(insert **name** from line 2) (insert **title** from line 3)

of this corporation be and hereby is authorized to execute contracts and bonds in the name and on behalf of said corporation, and affix its Corporate Seal thereto, and such execution of any contract of obligation in this corporation's name and on its behalf, with or without the Corporate Seal, shall be valid and binding upon this corporation; and that the above vote has not been amended or rescinded and remains in full force and effect as of the date set forth below.

6. ATTEST: _____ *AFFIX CORPORATE*
(Signature of **Clerk or Secretary**)* *SEAL HERE*
7. Name: _____
(Please print or type name in line 6)*
8. Date: _____
(insert a date that is ***ON OR AFTER*** the date the officer signed the **contract and bonds**.)

* The name and signature inserted in lines 6 & 7 **must** be that of the **Clerk or Secretary** of the corporation.

CITY OF NEWTON, MASSACHUSETTS

PAYMENT BOND

Know All Men By These Presents:

That we, _____, as PRINCIPAL, and _____, as SURETY, are held and firmly bound unto the City of Newton as Obligee, in the sum of _____dollars (\$_____) to be paid to the Obligee, for which payments well and truly to be made, we bind ourselves, our respective heirs, executors, administrators, successors and assigns, jointly and severally, firmly by these presents.

Whereas, the said PRINCIPAL has made a contract with the Obligee, bearing the date of _____, 2020 for the construction of _____ in Newton, Massachusetts.
(Project Title)

Now, the conditions of this obligation are such that if the PRINCIPAL and all Sub-contractors under said contract shall pay for all labor performed or furnished and for all materials used or employed in said contract and in any and all duly authorized modifications, alterations, extensions of time, changes or additions to said contract that may hereafter be made, notice to the SURETY of such modifications, alterations, extensions of time, changes or additions being hereby waived, the foregoing to include any other purposes or items set out in, and to be subject to, provisions of M.G.L. c. 30, sec. 39A, and M.G.L. c. 149 sec. 29, as amended, then this obligation shall become null and void; otherwise it shall remain in full force, virtue and effect.

In Witness Whereof, the PRINCIPAL and SURETY have hereto set their hands and seals this ___day of____, 2020.

PRINCIPAL

SURETY

BY _____

BY _____

(SEAL)

(ATTORNEY-IN-FACT) (SEAL)

(Title)

ATTEST: _____

ATTEST: _____

CITY OF NEWTON
GENERAL CONDITIONS OF THE CONTRACT
FOR PUBLIC WORKS CONSTRUCTION

ARTICLE 1

Definitions

The word "Commissioner" shall mean the official duly authorized to act for the City of Newton in the execution of the work of this contract, acting directly or through properly authorized agents.

The word "Engineer," or "City Engineer," shall mean the City Engineer of the City of Newton, acting directly or through properly authorized agents, such agents acting within the scope of the particular duties entrusted to them.

The word "Contractor" shall mean the party or parties contracting to perform the work covered by this contract or his, or their, legal representatives, successors or assigns.

The word "Plans" shall mean plans, and all related drawings, diagrams, profiles and specifications referred to and included in the Project Manual for this contract.

The word "City" shall mean the City of Newton.

The word "Project" shall mean the services which are the subject of the Contract Documents.

The words "Subcontract" and "Subcontractor" shall refer to project contracts between the Contractor and a subcontractor, and the subcontractor thereunder.

The term "Substantial Completion" shall mean either that the work required by the contract has been completed except for the work having a contract price of less than one per cent of the then adjusted contract price, or substantially all of the work has been completed and opened to public use except for minor incomplete or unsatisfactory work items that do not materially impair the usefulness of the work required by the contract.

ARTICLE 2
Plans, Drawings, Profiles

1. The work shall be done in accordance with Plans referred to in Article 1 and such further working and detail plans, drawings and profiles as may be furnished from time to time by the Engineer. All said plans, general and detail, are to be deemed a part of this contract, and the said Plans, specifications and contract are to be considered together, so that any work mentioned in the contract, though not shown on the Plans, and any work shown on the Plans though not mentioned in the contract, is to be provided by the Contractor as a part of this contract. Figured dimensions are to prevail over scale. All things which in the opinion of the Engineer may fairly be inferred from the contract, Plans and specifications, are to be executed by the Contractor as a part of the contract; and the Engineer shall be sole judge as to whether detail plans, drawings and profiles conform to the Plans and the contract.

Discrepancy in Plans

2. The Contractor shall carefully examine all said Plans, profiles, drawings, specifications and orders; all figures, dimensions, lines, marks and scales thereof, and all directions of the Commissioner and the Engineer relating to the work, and conform to those in relation to which there is no doubt or discrepancy, but at once submit all cases of doubt or discrepancy to the Engineer for adjustment. Anything done on any part of the work for which special information or drawing should be procured, unless done in accordance with such information or drawing, or anything done in relation to which there is doubt or discrepancy, except in accordance with the adjustment thereof, or done in violation of law or public authority, is to be redone if the Commissioner shall so direct.

ARTICLE 3
Inspection

The Contractor in carrying on the contract shall conform to all determinations and directions of the Engineer relating to the proper interpretation of the Plans, , the fitness of persons employed on the work or the number thereof, or the suitability, amount, quality, and value of anything done or any materials used, and the Contractor shall permit the Commissioner and/or the Engineer and/or persons designated by them to enter upon the work and inspect the same at all times and in all places, and shall provide safe and convenient facilities for making such entry and inspection.

ARTICLE 4
Change in Plans and Work

The City, acting through the Commissioner and upon his written order only, from time to time given to the Contractor or his foreman, may change, increase or take away any part of the work, or change the specifications, Plans, drawings, form or materials thereof. Any deduction or addition thereto is to be allowed, or paid for at a price to be determined, within not more than 15 days of the completion of the change, by the City Engineer acting in the same capacity as an architect in a building contract as between City and Contractor. Any demand for addition or deduction must be made in writing to the City Engineer within seven (7) days of the time change was ordered.

ARTICLE 5
Time and Manner of Doing the Work

1. The Contractor shall begin work upon receipt of written Notice to Proceed. Once begun the work shall be carried out in a continuous and uninterrupted fashion with sufficient workforce and resources to assure completion by the date for completion established by the Contract Documents.

2. The Contractor shall carry on the work in accordance with the requirements of law and of all other public authorities, and to the satisfaction of the Commissioner; he shall give all notices, take out all permits, pay all charges and fees, give personal supervision to the work and keep thereon a competent foreman and sufficient employees, skilled in the several parts which are given them to do.

Maintenance of Travel

3. As applicable, the Contractor shall conduct his work so as to interfere as little as possible with public travel, and shall give property owners proper means of access to their property where existing access has been cut off by the work. The Contractor shall keep the streets open for through travel except where, in the opinion of the Commissioner, it is necessary to close the street. The continuous length of the street occupied for the work shall be kept as short as possible, and no part of the work shall be unnecessarily delayed. Wherever the Commissioner shall direct, trenches shall be bridged by the Contractor in a proper and secure manner so as not to interrupt travel. Free access shall be maintained at all times to all water gates, gas gates, and fire hydrants.

Abandonment of Work by Contractor

4. In the event the City Engineer certifies to the Commissioner that the work is not being so carried forward or if the Contractor at any time is not carrying on the work to the satisfaction of the Commissioner, or is not observing any of the provisions of the contract, or has abandoned the work, or become insolvent or assigned his property, the City, acting by the Commissioner and at his discretion, may, with or without notice to the Contractor, or advertising for doing the work, and by contract, day labor or otherwise, do any part of the work which the Contractor has failed to do or replace any part not done to the satisfaction of the Commissioner, or take possession of the work and complete the same, and in doing so may use any implements, machinery or materials on or about the work which are the property of the Contractor, charging the Contractor any excess cost for completing the work, which excess cost the Contractor agrees to pay.

ARTICLE 6

Compensation for Work

1. Subject to the provisions of Paragraph 10 of this Article, the price named in the proposal and accepted by the City shall be paid by the City and received by the Contractor as full compensation for furnishing materials and for use of tools, forms, machinery and other implements, and for labor in moving materials and executing all the work contemplated in this contract, also for loss or damage arising from delay however occasioned, or out of the nature of the work aforesaid or from the action of the elements, from floods, or from any unforeseen obstructions or difficulties which may be encountered in the prosecution of the same and for all risks of every description connected with the work and for well and faithfully completing the work in the proper manner and according to the plans and specifications and requirements of the Commissioner under them.

2. During the first week of each calendar month, the City Engineer shall cause all work done by the Contractor during the previous month to be measured and shall estimate the value thereof and, on or before the 10th of each month issue a certificate to the Commissioner of the measurements and the amount due the Contractor according to the terms of his contract.

3. The City shall pay the Contractor on approval of the Commissioner monthly on or before the 18th of each month for all work done during the preceding month according to the aforementioned certificate of the City Engineer, less 5 per cent of the amount of such work and less any amounts due the City by the Contractor.

Final and Substantial Completion

4. Upon substantial completion of the work required by the Contract, the Contractor must present to the City Engineer written certification that the work is substantially complete. Within 21 calendar days after such certification is presented, the City Engineer shall present to the Contractor either a written declaration that the work is substantially complete or an itemized list of incomplete or unsatisfactory work items sufficient to demonstrate that the work is not substantially complete. The City Engineer shall include with such itemized list a date by which the work items must be completed, which date may not be earlier than the date for substantial completion established in the Contract Documents. If the City Engineer does not respond as provided herein within 21 calendar days, then the date of the Contractor's certification shall become the date for effective declaration of substantial completion.

5. Within 15 calendar days after the effective declaration of substantial completion, the City Engineer shall send to the Contractor by certified mail, return receipt requested, a complete list of all incomplete or unsatisfactory work items. Unless delayed by causes beyond the Contractor's control, with an extension of time granted pursuant to Article 8, the Contractor must complete the work items within 45 calendar days after receipt of the list, or by the contractual completion date, whichever is later. If the contractor fails to complete the work within the required time the City may, notwithstanding other rights and remedies at its disposal, and upon seven days written notice to the Contractor terminate the contract and complete the incomplete or unsatisfactory work items and charge the cost of same to the Contractor.

6. Within 65 calendar days following the effective declaration of substantial completion, the City Engineer shall issue to the Commissioner who shall cause to be paid to the Contractor a substantial completion estimate which estimate shall consist of the balance of the then current contract price less a one percent retention, the estimated cost to complete incomplete or unsatisfactory work items, the value of any outstanding claims against the Contractor and the sum of all demands for direct payment made pursuant to Article 12 herein, provided that until final acceptance, the City shall retain five percent of the value of all items planted in the ground.

7. The Contractor shall provide written notice to the City Engineer when the work has been brought to final completion. Within ten days following receipt of such notice, and providing his inspection shows no work items remain incomplete or unsatisfactory, the City Engineer shall issue to the Commissioner a final certificate of the total amount of work done and the money due the Contractor therefor, crediting thereon the amounts of the previous payments. In making the final certificate, the City Engineer shall not be bound by any preceding certificate or estimate of the amount of work done or materials furnished.

8. Within 30 calendar days following receipt of final completion, the City shall pay the Contractor, on the approval of the Commissioner, the percentages retained and the balance due the Contractor according to the aforementioned final certificate of the City Engineer less any indebtedness of the Contractor for incomplete or unsatisfactory work or claims made by or against the City. If a claim or claims are made, or notice of liability given, such amounts due the Contractor may be paid upon satisfaction of such claims or upon furnishing of indemnity to said City against all loss, cost, damage or expense by reason of such claims.

9. The City, on making any payment after the completion of the work, shall be released from all claim or liability to the Contractor for anything done or used, or for any loss or injury sustained in carrying on the contract, or for any act, omission, neglect or mistake of the City or any person relating to or affecting the contract, except for the balance of any sum retained as aforesaid.

Extra Work

10. The Contractor shall be paid for any additions, or deductions as provided in Article 4, paragraph 1, and for extra labor done by, and for extra materials furnished by him in compliance with the written order only of the Commissioner, calling for work not similar in character to that covered by the items given in the proposal, and for which no price is set in the said written order, the direct (not including consequential) cost to the Contractor, as determined to be reasonable by the Commissioner, plus fifteen per cent of said costs as so determined in regard to labor only. For teams or trucks so furnished, no payment shall be made to the Contractor beyond the current local rate as determined by the Commissioner in each case. The direct cost of labor may include the cost of mechanics and laborers furnished and a reasonable proportion of the time of the foreman and timekeeper, but it shall in no case include any charge for the use of tools, for establishment charges or for time spent by the Contractor. The actual cost of insurance on extra pay rolls and of materials furnished for extra work, shall be paid without any addition. The labor and materials so ordered shall constitute a part of the work to be done under the contract; and all and singular the provisions of the contract shall apply to said labor and materials as if the same were specified therein. The Contractor shall have no claim for the above-mentioned extra labor and materials unless he furnishes the details and bills therefor within one week after doing any such labor or furnishing any such materials.

11. No claim of the Contractor against the City under this contract shall be deemed valid unless such claim is presented to the Commissioner within ten days from the time when the Contractor first knows of, or has opportunity to know of, the facts and circumstances on which such claim is based.

12. A payment or payments to the Contractor, in cases where these provisions or any of them, are not complied with, shall not be construed as a waiver of said provisions or any part thereof.

Contract Made Subject to Appropriations

13. This contract is made subject to appropriation heretofore made and shall not be altered unless the Contractor, the sureties on the bond, if any, the officer making the contract and the Mayor shall in writing agree thereto.

ARTICLE 7

Liquidated Damages

1. In case the work embraced in the contract shall not have been substantially completed by the date(s) stipulated therein, the Contractor shall pay to the City of Newton as liquidated damages a designated sum per calendar day for the entire period of overrun until the work is substantially completed in accordance with the following Schedule of Deductions and, in addition, the Contractor shall pay without reimbursement the entire cost of all traffic officers, railroad flagmen, inspectors, or other personnel the City Engineer and/or the Chief Engineer of the railroad determines to be necessary during the period of overrun of time.

SCHEDULE OF DEDUCTIONS

<u>Original Contract Amount From More Than</u>	<u>To and Including</u>	<u>Daily Charge Per Calendar Day</u>
\$ 0.	\$ 25,000.	\$ 30.
25,000.	50,000.	50.
50,000.	100,000.	100.
500,000.	1,000,000.	150.
1,000,000.	2,000,000.	200.
2,000,000.	—	300.

2. In case the work covered by the contract shall not have been brought to final completion within 45 calendar days following the date of declaration of substantial completion, the Contractor shall pay to the City of Newton as liquidated damages the sum of \$150.00 for each week or portion thereof during the period of overrun until the work is complete.

3. Whatever sum of money may become due and payable to the City of Newton by the Contractor under this Article may be retained out of money belonging or owed to the Contractor in the hands and possession of or by the City of Newton. It is agreed that this Article shall be construed and treated by the parties to the contract not as imposing a penalty upon said Contractor for failing fully to complete said work as agreed on or before the time specified in the proposal, but as liquidated damages to compensate said City of Newton for all additional costs incurred by it because of the failure of the Contractor fully to complete said work on or before the date of completion specified in the proposal.

ARTICLE 8

Delays and Extensions of Time

1. If the Contractor is delayed at any time in the progress of the work by an act or neglect of the City, or by changes in the work ordered by the City, or by unseasonably inclement weather, or by other causes deemed by the City Engineer to be beyond the Contractor's control, and which the City Engineer determines may justify delay, then the time for completion may be extended for such reasonable time as the City Engineer may determine.

2. No such extension of time will be allowed unless the Contractor submits a written request for an extension to the City Engineer no later than 10 calendar days of the start of the occurrence or event giving rise thereto. Each such request must describe the occurrence or event and specify the manner and extent that such occurrence or event is causing or has caused a delay in the work. The City Engineer shall promptly investigate each request and make his written determination to the Commissioner and the Contractor within 10 days after receipt of the request. In his determination the City Engineer may either grant, deny, or modify the length of the requested extension.

3. If the City Engineer's determination so warrants, the Commissioner shall authorize a written Change Order to the Contract extending the time for completion. No extension of time shall be deemed as granted until said Change Order has been duly executed by the parties.

4. Change Orders which may be executed by the City and the Contractor in connection with additions, extra labor and/or extra materials shall not be considered as allowing extensions of the time for completion unless the change order expressly specifies that additional time is allowed in connection with the work under the change order. Once a Change Order has been executed by the parties, any request by the Contractor for an extension of time based solely on the fact that additions, extra labor and/or extra materials are required by the Change Order will be denied by the City Engineer.

5. Permitting the Contractor to continue and finish the work or any part of it after the times fixed for its completion, or after the date to which the time for completion may have been extended, shall in no way operate as a waiver on the part of the City of Newton of any of its rights under the contract. The Contractor remains liable for damages caused other than by delay.

ARTICLE 9

Lines and Grades

The Contractor shall retain a Registered Land Surveyor who shall furnish such boards and stakes and cause to be placed thereon, such lines, marks and directions relating to the work as the Commissioner or City Engineer shall from time to time direct.

ARTICLE 10

Public Service Pipes and Conduits

1. The Contractor shall maintain such pipes or conduits of public service corporations or of the City as are across or within the lines of the work until such time as said public service corporations or the City assume the maintenance or removal of said pipes or conduits. The Commissioner will notify such public service corporations to that effect on the existence of such obstructions to the work being brought to his notice by the Contractor. The City will relocate either temporarily or permanently all water mains and water service pipes, or hydrants, and drains or sewers which may interfere with the work contemplated in this contract.
(This clause is not to be construed as applying to such pipes as may be readily supported and protected during the progress of the work.) The cost of shutting off and turning on water in water mains during blasting shall be assumed by the City.

Protection of Existing Structures

2. All existing gas pipes, water pipes, sewers, drains, conduits, or other structures which are uncovered by the excavation shall be carefully supported and protected from injury by the Contractor, and, in case of injury, they shall be restored by him, without compensation therefor, to as good condition as that in which they were found, and shall be kept in repair until 6 months after the completion of the work. The Contractor shall provide suitable temporary channels for water at all water courses. Wherever the work passes under or adjacent to street railway tracks, the Contractor shall make all necessary arrangements with the railway company for doing any work which may affect the property of the company or interfere with the operating of the railway, and he shall be liable for any damage that may be caused by any act, omission or neglect on his part, and shall pay all expenses of every kind incidental to this work.

Changing the Location of Existing Structures

3. Whenever it becomes necessary to change the location of any water or gas pipes, sewers, drains, conduits or other structures not otherwise provided for in these specifications, the Contractor shall do the whole or such portions of the work of making such changes as the Commissioner may require, and shall receive in payment therefor the reasonable cost of the work done as determined by the Commissioner plus 15 per cent of such cost. In estimating such cost, no allowance shall be made to the Contractor for the use of tools not especially provided for this work, for general superintendence, or for any overhead expenses except liability insurance.

ARTICLE 11

Co-operation with Other Contractors

The Contractor shall conduct the work in such manner as not to interfere with other work being done by the City, by contract or otherwise, and if deemed necessary by the Commissioner, the work under this contract shall conform to the progress of said other work; shall co-operate with other contractors or employees who may be doing work for the City, and with public service corporations affected by the work, in arranging for storage places, connections, bracings, temporary support for structures, repairs, etc.

ARTICLE 12

Subcontracts

1. The Contractor, in any contract with a Subcontractor, shall provide that the Subcontractor shall be subject to all specifications, terms, provisions, conditions, requirements and liabilities set forth in this contract so far as such specifications, terms, provisions, conditions, requirements and liabilities are applicable to the work to be done under such Subcontract, and shall also provide that such Subcontract shall be terminated by the Contractor whenever the Commissioner shall certify to him in writing that in his opinion the work of the Subcontractor is unnecessarily or unreasonably delayed or that the Subcontractor has violated any of the provisions of this contract. The Contractor shall at once terminate such subcontract if the Commissioner, after certifying as aforesaid, shall in writing direct the Contractor to make such termination.

2. Subcontracts shall be made in writing and the Contractor shall furnish the Commissioner with a copy of all Subcontracts on demand.

3. Pursuant to the provisions of M.G.L. Ch. 30, Sec. 39F (1), the following provisions are included in the General Conditions:

(a) Forthwith after the Contractor receives payment on account of a periodic estimate, the Contractor shall pay to each Subcontractor the amount paid for the labor performed and the materials furnished by that Subcontractor, less any amount specified in any court proceedings barring such payment and also less any amount claimed due from the Subcontractor by the Contractor.

(b) Not later than the sixty-fifth day after each Subcontractor substantially completes his work in accordance with the plans and specifications, the entire balance due under the Subcontract less amounts retained by the City as the estimated cost of completing the incomplete and unsatisfactory items of work, shall be due the Subcontractor; and the City shall pay that amount to the Contractor. The Contractor shall forthwith pay to the Subcontractor the full amount received from the City less any amount specified in any court proceedings barring the payment and also less any amount claimed due from the Subcontractor by the Contractor.

(c) Each payment made by the City to the Contractor pursuant to subparagraphs (a) and (b) of this paragraph for the labor performed and the materials furnished by a Subcontractor shall be made to the Contractor for the account of the Subcontractor; and the City shall take reasonable steps to compel the Contractor to make each such payment to each such Subcontractor. If the City has received a demand for direct payment from a Subcontractor for any amount which has already been included in a payment to the Contractor or which is to be included in a payment to the Contractor for payment to the Subcontractor as provided in subparagraphs (a) and (b), the City shall act upon the demand as provided in this section.

(d) If, within seventy days after the Subcontractor has substantially completed the Subcontract work, the Subcontractor has not received from the Contractor the balance due under the Subcontract including any amount due for extra labor and materials furnished to the Contractor, less any amount retained by the City, the demand shall be by a sworn statement delivered to or sent by certified mail to the City, and a copy shall be delivered to or sent by certified mail to the Contractor at the same time. The demand shall contain a detailed breakdown of the balance due under the Subcontract and also a statement of the status of the completion of the Subcontract work shall be valid even if delivered or mailed prior to the seventieth day after which the Subcontractor has substantially completed the Subcontract work. Within ten days after the Subcontractor has delivered or so mailed the demand to the City and delivered or so mailed a copy to the Contractor, the Contractor may reply to the demand. The reply shall be by a sworn statement delivered to or sent by certified mail to the City and a copy shall be delivered to or sent by certified mail to the Subcontractor at the same time. The reply shall contain a detailed breakdown of the balance due under the Subcontract including any amount due for extra labor and materials furnished to the Contractor and of the amount due for each claim made by the Contractor against the Subcontractor.

(e) Within fifteen days after receipt of the demand by the City, but in no event prior to the seventieth day after substantial completion of the Subcontract work, the City shall make direct payment to the Subcontractor of the balance due under the Subcontract including any amount due for extra labor and materials furnished to the Contractor, less any amount (i) retained by the City as the estimated cost of completing the incomplete or unsatisfactory items of work (ii) specified in any court proceedings barring such payment, or, (iii) if the reply shall not deduct from a direct payment any amount as provided in part (iii) if the reply is not sworn to, or for which the sworn reply does not contain the detailed breakdown required by subparagraph (d). The City shall make further direct payments to the Subcontractor forthwith after the removal of the basis for deductions from direct payments made as provided in parts (i) and (ii) of this subparagraph.

(f) The City shall forthwith deposit the amount deducted from a direct payment as provided in part (iii) of subparagraph (e) in an interest-bearing joint account in the names of the Contractor and the Subcontractor in a bank in Massachusetts selected by the City or agreed upon by the Contractor and the Subcontractor and shall notify the Contractor and the Subcontractor of the date of the deposit and the bank receiving the deposit. The bank shall pay the amount in the account, including accrued interest, as provided in an agreement between the Contractor and the Subcontractor or as determined by decree of a court of competent jurisdiction.

(g) All direct payments and all deductions from demands for direct payments deposited in an interest-bearing account or accounts in a bank pursuant to subparagraph (f) shall be made out of amounts payable to the Contractor at the time of receipt of a demand for direct payment from a Subcontractor and out of amounts which later become payable to the Contractor and in the order of receipt of such demands from Subcontractors. All direct payments shall discharge the obligation of the City to the Contractor to the extent of such payment.

(h) The City shall deduct from payments to a Contractor amounts which, together with deposits in interest-bearing accounts pursuant to subparagraph (f), are sufficient to satisfy all unpaid balances of demands for direct payment received from Subcontractors. All such amounts shall be earmarked for such direct payments, and the Subcontractors shall have a right in such deductions prior to any claims against such amounts by creditors of the Contractor.

ARTICLE 13

Responsibility for Work-Contractor's Responsibility

The Contractor has made his proposal from his own examinations and estimates, and shall not hold the City, its agents, or employees, responsible for or bound by, any schedule, estimate, sounding, boring, or any plan of any part of the work; shall, if any error in any plan, drawing, specification or direction relating to anything to be done under the contract come to his knowledge, report it at once to the Commissioner; shall not, except as the Commissioner shall authorize in writing, assign or sublet any part of the contract except for the supply of materials and plant, or of anything to be done thereunder; shall, subject to the provisions of the contract take all responsibility of, and bear all losses resulting to him in carrying on the contract, and shall assume the defense of, and hold the City, its agents and employees harmless from all suits and claims against them, or any of them, arising from the use of any invention, patent or patent right, material, labor

or implement, by or from any act or omission or neglect of the Contractor, his Subcontractor, his agents or employees, in carrying on the contract, or for any liability of any nature arising under the contract. The Contractor shall be solely responsible and liable for, and shall fully protect and indemnify the City against all claims for damages to persons or property occasioned by or resulting from blasting or other methods or processes in the work of construction, whether such damages be attributable to negligence of the Contractor, his employees or his Subcontractor or otherwise.

ARTICLE 14 LIGHTS--GUARDS

1. The Contractor shall assume all responsibilities of the work and take all proper precautions to protect persons and property from injury and unnecessary interference; leave a reasonably unobstructed way along public and private places for pedestrians, teams, and vehicles, and for access to hydrants; provide proper walks over or around any obstruction made in a public or private place in carrying on the contract, and maintain from the beginning of twilight through the whole of every night, on or near the obstruction sufficient lights and guards to protect travelers from injury thereby, and if, after one notification from the Commissioner that said lights and guards are not sufficient, the Contractor has not placed additional lights and guards to the satisfaction of the Commissioner, the Commissioner shall have the right to take charge of that part of the work at the expense of the Contractor. While the work is suspended he shall keep all roadways and sidewalks in proper condition, and when the work is completed put the place and vicinity in proper condition and so leave them.

2. The Contractor shall provide proper means of access to property where the existing access is cut off by the Contractor and replace or put in good condition every conduit, catch-basin, tree, wall, fence, or other thing injured by the Contractor in carrying on the contract, unless the same has been permanently done away with, on approval of the Commissioner, as being necessary to the proper carrying on of the contract.

ARTICLE 15 Guaranty

1. Any settlement or other defect, or the failure of any part of the structure or the work due to defective materials or workmanship, that occurs within one year after the work is completed, is to be immediately repaired by the Contractor. In the event of any such settlement, defect, or failure causing liability to the City for damage to persons or property, the Contractor does by this clause agree to hold the City harmless and to assume the defense of any claims therefor.

2. Responsibility under this guaranty for the adequacy of the work does not relieve the Contractor of his obligation to comply with the terms of the contract and to conform to all the requirements of the plans and specifications, nor does it give him the right to deviate in any way from the details of design of the structure or the work.

ARTICLE 16 Defective Work and Materials

The inspection of the work shall not relieve the Contractor of any of his obligations to fulfill his contract as herein described, and defective work shall be made good and unsuitable materials may be rejected, notwithstanding that such work and materials have been previously overlooked by the Engineer and accepted or estimated for payment. If the work or materials, or any part thereof shall be found defective at any time before the final acceptance of the whole work, the Contractor shall forthwith make good such defect in a manner satisfactory to the Engineer, and if any material brought upon the ground for use in the work or selected for the same, shall be condemned by the Engineer as unsuitable or not in conformity with the specifications, the Contractor shall forthwith remove such materials from the vicinity of the work. Nothing in this contract shall be construed as vesting in the Contractor any right of property in the materials used after they have been attached or affixed to the work or the soil, but all materials shall, upon being so attached or affixed, become the property of the City.

ARTICLE 17
Employment of Labor

The Contractor shall give preference in employment, first to citizens of Massachusetts, second, to other citizens of the United States; and shall allow all employees on said work to lodge, board and trade where they choose, and shall not obstruct any other person in doing work for the City; and shall conform to all labor laws of the Commonwealth; and no laborer or teamster, workman or mechanic working within this Commonwealth in the employ of the Contractor or Subcontractor or other person doing or contracting to do the whole or a part of the work contemplated by the Contractor shall be requested to, or required to, or work more than eight hours in any one calendar day. This contract is subject to all the laws of the Commonwealth, and ordinances of the City and if any clause thereof does not conform to such laws and ordinances, such clause shall be void and such laws and ordinances operated in lieu thereof.

ARTICLE 18
Laws and Regulations - Contractor to Comply with Law

The Contractor shall keep fully informed of all existing or future acts of the legislature, and of all municipal ordinances, prohibitions, rules and regulations in any manner affecting the conduct of the work, and of all orders or decrees of anybody or tribunal having any jurisdiction or authority over the materials, times, places and actions of those employed in the work embraced in the contract. The Contractor shall at all times observe and comply with all existing and future acts, ordinances, prohibitions, rules, regulations, orders and decrees; and shall protect and indemnify the city and its employees against any and all claims arising from or based on any violation of such acts, ordinances, prohibitions, rules, regulations, orders or decrees, and against all violations of law by the Contractor or his agents or employees.

END OF SECTION

CITY OF NEWTON

WAGE RATE REQUIREMENTS

1. GENERAL

- A. This section summarizes the requirements for the payment of wages to laborers and mechanics employed under the Contract.
- B. Other duties and requirements of law which may not be specified in this section apply and are inherently a part of the Contract.

2. WAGE RATES

- A. The rate per hour to be paid to mechanics, apprentices, teamsters, chauffeurs, and laborers employed on the Work shall not be less than the rate of wages in the attached "Minimum Wage Rates" as determined by the Commissioner of Labor and Industries. This schedule shall continue to be the minimum rate of wages for said employees during the life of this Contract.
- B. Keep posted on the site a legible copy of said schedule. Keep on file the wage rates and classifications of labor employed on this Work in order that they may be available for inspection by the Owner, Administrator, or the Architect.
- C. Apprentices employed pursuant to this determination of wage rates must be registered and approved by the State Apprenticeship Council wherever rates for journeymen or apprentices are not listed.
- D. Pay reserve police officers employed on the Work the prevailing rate of wages paid to regular police officers as required by M.G.L. c149, Sec. 34B, as amended. Such police officers shall be covered by Workmen's Compensation Insurance and Employers Liability Insurance by the Contractor.
- E. **The Contractor and all subcontractors shall, on a weekly basis throughout the term of the contract, provide to the City of Newton certified payroll affidavits in pdf format verifying compliance with M.G.L. c.149, Sec. 27, 27A and 27B.** The Contractor is obligated to provide such records to the City directly on a weekly basis. The City may assess a penalty of \$100 for each day beyond the required submission date that such records are received, which amount shall be deducted from any amounts to the Contractor from the City. In the event of chronic late submissions, the City shall report the same to the Office of the Attorney General.
- F. The Contractor and all subcontractors shall provide a Statement of Compliance within 15 days of the completion of its portion of the work. This statement shall be submitted to the Owner on the form found elsewhere in this section.
- G. The Contractor shall maintain accurate and complete records, including payroll records, during the Contract term and for three years thereafter.

END OF SECTION



**THE COMMONWEALTH OF MASSACHUSETTS
EXECUTIVE OFFICE OF LABOR AND WORKFORCE DEVELOPMENT
DEPARTMENT OF LABOR STANDARDS**

Prevailing Wage Rates

CHARLES D. BAKER
Governor

As determined by the Director under the provisions of the
Massachusetts General Laws, Chapter 149, Sections 26 to 27H

ROSALIN ACOSTA
Secretary
MICHAEL FLANAGAN
Director

KARYN E. POLITO
Lt. Governor

Awarding Authority: City of Newton
Contract Number: #20-87 **City/Town:** NEWTON
Description of Work: Wetland Trail Creation at Kessler Woods Conservation Area; Development of a trail through Kessler Woods parcels and Conservation Restriction consisting of a natural trail, boardwalk and bridge

Job Location: Kessler Woods/Oak Hill

Information about Prevailing Wage Schedules for Awarding Authorities and Contractors

- This wage schedule applies only to the specific project referenced at the top of this page and uniquely identified by the "Wage Request Number" on all pages of this schedule.
- An Awarding Authority must request an updated wage schedule from the Department of Labor Standards ("DLS") if it has not opened bids or selected a contractor within 90 days of the date of issuance of the wage schedule. For CM AT RISK projects (bid pursuant to G.L. c. 149A), the earlier of: (a) the execution date of the GMP Amendment, or (b) the bid for the first construction scope of work must be within 90-days of the wage schedule issuance date.
- The wage schedule shall be incorporated in any advertisement or call for bids for the project as required by M.G.L. c. 149, § 27. The wage schedule shall be made a part of the contract awarded for the project. The wage schedule must be posted in a conspicuous place at the work site for the life of the project in accordance with M.G.L. c. 149 § 27. The wages listed on the wage schedule must be paid to employees performing construction work on the project whether they are employed by the prime contractor, a filed sub-bidder, or any sub-contractor.
- All apprentices working on the project are required to be registered with the Massachusetts Department of Labor Standards, Division of Apprentice Standards (DLS/DAS). Apprentice must keep his/her apprentice identification card on his/her person during all work hours on the project. An apprentice registered with DAS may be paid the lower apprentice wage rate at the applicable step as provided on the prevailing wage schedule. **Any apprentice not registered with DLS/DAS regardless of whether or not they are registered with any other federal, state, local, or private agency must be paid the journeyworker's rate for the trade.**
- The wage rates will remain in effect for the duration of the project, except in the case of multi-year public construction projects. For construction projects lasting longer than one year, awarding authorities must request an updated wage schedule. Awarding authorities are required to request these updates no later than two weeks before the anniversary of the date the contract was executed by the awarding authority and the general contractor. For multi-year CM AT RISK projects, awarding authority must request an annual update no later than two weeks before the anniversary date, determined as the earlier of: (a) the execution date of the GMP Amendment, or (b) the execution date of the first amendment to permit procurement of construction services. Contractors are required to obtain the wage schedules from awarding authorities, and to pay no less than these rates to covered workers. The annual update requirement is not applicable to 27F "rental of equipment" contracts.
- Every contractor or subcontractor which performs construction work on the project is required to submit weekly payroll reports and a Statement of Compliance directly to the awarding authority by mail or email and keep them on file for three years. Each weekly payroll report must contain: the employee's name, address, occupational classification, hours worked, and wages paid. Do not submit weekly payroll reports to DLS. A sample of a payroll reporting form may be obtained at <http://www.mass.gov/dols/pw>.
- Contractors with questions about the wage rates or classifications included on the wage schedule have an affirmative obligation to inquire with DLS at (617) 626-6953.
- Employees not receiving the prevailing wage rate set forth on the wage schedule may report the violation to the Fair Labor Division of the office of the Attorney General at (617) 727-3465.
- Failure of a contractor or subcontractor to pay the prevailing wage rates listed on the wage schedule to all employees who perform construction work on the project is a violation of the law and subjects the contractor or subcontractor to civil and criminal penalties.

Issue Date: 06/10/2020

Wage Request Number: 20200610-060

Classification	Effective Date	Base Wage	Health	Pension	Supplemental Unemployment	Total Rate
Construction						
(2 AXLE) DRIVER - EQUIPMENT <i>TEAMSTERS JOINT COUNCIL NO. 10 ZONE A</i>	06/01/2020	\$36.25	\$12.41	\$13.72	\$0.00	\$62.38
	08/01/2020	\$36.25	\$12.91	\$13.72	\$0.00	\$62.88
	12/01/2020	\$36.25	\$12.91	\$14.82	\$0.00	\$63.98
	06/01/2021	\$37.05	\$12.91	\$14.82	\$0.00	\$64.78
	08/01/2021	\$37.05	\$13.41	\$14.82	\$0.00	\$65.28
	12/01/2021	\$37.05	\$13.41	\$16.01	\$0.00	\$66.47
(3 AXLE) DRIVER - EQUIPMENT <i>TEAMSTERS JOINT COUNCIL NO. 10 ZONE A</i>	06/01/2020	\$36.32	\$12.41	\$13.72	\$0.00	\$62.45
	08/01/2020	\$36.32	\$12.91	\$13.72	\$0.00	\$62.95
	12/01/2020	\$36.32	\$12.91	\$14.82	\$0.00	\$64.05
	06/01/2021	\$37.12	\$12.91	\$14.82	\$0.00	\$64.85
	08/01/2021	\$37.12	\$13.41	\$14.82	\$0.00	\$65.35
	12/01/2021	\$37.12	\$13.41	\$16.01	\$0.00	\$66.54
(4 & 5 AXLE) DRIVER - EQUIPMENT <i>TEAMSTERS JOINT COUNCIL NO. 10 ZONE A</i>	06/01/2020	\$36.44	\$12.41	\$13.72	\$0.00	\$62.57
	08/01/2020	\$36.44	\$12.91	\$13.72	\$0.00	\$63.07
	12/01/2020	\$36.44	\$12.91	\$14.82	\$0.00	\$64.17
	06/01/2021	\$37.24	\$12.91	\$14.82	\$0.00	\$64.97
	08/01/2021	\$37.24	\$13.41	\$14.82	\$0.00	\$65.47
	12/01/2021	\$37.24	\$13.41	\$16.01	\$0.00	\$66.66
ADS/SUBMERSIBLE PILOT <i>PILE DRIVER LOCAL 56 (ZONE 1)</i>	08/01/2019	\$102.78	\$9.90	\$21.15	\$0.00	\$133.83
For apprentice rates see "Apprentice- PILE DRIVER"						
AIR TRACK OPERATOR <i>LABORERS - ZONE 1</i>	06/01/2020	\$39.90	\$8.60	\$17.09	\$0.00	\$65.59
	12/01/2020	\$40.88	\$8.60	\$17.09	\$0.00	\$66.57
	06/01/2021	\$41.90	\$8.60	\$17.09	\$0.00	\$67.59
	12/01/2021	\$42.91	\$8.60	\$17.09	\$0.00	\$68.60
For apprentice rates see "Apprentice- LABORER"						
ASBESTOS REMOVER - PIPE / MECH. EQUIPT. <i>HEAT & FROST INSULATORS LOCAL 6 (BOSTON)</i>	06/01/2020	\$38.00	\$12.50	\$8.85	\$0.00	\$59.35
	12/01/2020	\$39.00	\$12.50	\$8.85	\$0.00	\$60.35
ASPHALT RAKER <i>LABORERS - ZONE 1</i>	06/01/2020	\$39.40	\$8.60	\$17.09	\$0.00	\$65.09
	12/01/2020	\$40.38	\$8.60	\$17.09	\$0.00	\$66.07
	06/01/2021	\$41.40	\$8.60	\$17.09	\$0.00	\$67.09
	12/01/2021	\$42.41	\$8.60	\$17.09	\$0.00	\$68.10
For apprentice rates see "Apprentice- LABORER"						
ASPHALT/CONCRETE/CRUSHER PLANT-ON SITE <i>OPERATING ENGINEERS LOCAL 4</i>	06/01/2020	\$49.33	\$13.00	\$15.70	\$0.00	\$78.03
	12/01/2020	\$50.48	\$13.00	\$15.70	\$0.00	\$79.18
	06/01/2021	\$51.58	\$13.00	\$15.70	\$0.00	\$80.28
	12/01/2021	\$52.73	\$13.00	\$15.70	\$0.00	\$81.43
For apprentice rates see "Apprentice- OPERATING ENGINEERS"						
BACKHOE/FRONT-END LOADER <i>OPERATING ENGINEERS LOCAL 4</i>	06/01/2020	\$49.33	\$13.00	\$15.70	\$0.00	\$78.03
	12/01/2020	\$50.48	\$13.00	\$15.70	\$0.00	\$79.18
	06/01/2021	\$51.58	\$13.00	\$15.70	\$0.00	\$80.28
	12/01/2021	\$52.73	\$13.00	\$15.70	\$0.00	\$81.43
For apprentice rates see "Apprentice- OPERATING ENGINEERS"						

Classification	Effective Date	Base Wage	Health	Pension	Supplemental Unemployment	Total Rate
BARCO-TYPE JUMPING TAMPER <i>LABORERS - ZONE 1</i>	06/01/2020	\$39.40	\$8.60	\$17.09	\$0.00	\$65.09
	12/01/2020	\$40.38	\$8.60	\$17.09	\$0.00	\$66.07
	06/01/2021	\$41.40	\$8.60	\$17.09	\$0.00	\$67.09
	12/01/2021	\$42.41	\$8.60	\$17.09	\$0.00	\$68.10
For apprentice rates see "Apprentice- LABORER"						
BLOCK PAVER, RAMMER / CURB SETTER <i>LABORERS - ZONE 1</i>	06/01/2020	\$39.90	\$8.60	\$17.09	\$0.00	\$65.59
	12/01/2020	\$40.88	\$8.60	\$17.09	\$0.00	\$66.57
	06/01/2021	\$41.90	\$8.60	\$17.09	\$0.00	\$67.59
	12/01/2021	\$42.91	\$8.60	\$17.09	\$0.00	\$68.60
For apprentice rates see "Apprentice- LABORER"						
BOILER MAKER <i>BOILERMAKERS LOCAL 29</i>	01/01/2020	\$46.10	\$7.07	\$17.98	\$0.00	\$71.15

Apprentice - BOILERMAKER - Local 29

Effective Date - 01/01/2020

Step	percent	Apprentice Base Wage	Health	Pension	Supplemental Unemployment	Total Rate
1	65	\$29.97	\$7.07	\$11.69	\$0.00	\$48.73
2	65	\$29.97	\$7.07	\$11.69	\$0.00	\$48.73
3	70	\$32.27	\$7.07	\$12.59	\$0.00	\$51.93
4	75	\$34.58	\$7.07	\$13.49	\$0.00	\$55.14
5	80	\$36.88	\$7.07	\$14.38	\$0.00	\$58.33
6	85	\$39.19	\$7.07	\$15.29	\$0.00	\$61.55
7	90	\$41.49	\$7.07	\$16.18	\$0.00	\$64.74
8	95	\$43.80	\$7.07	\$17.09	\$0.00	\$67.96

Notes:

Apprentice to Journeyworker Ratio:1:4

BRICK/STONE/ARTIFICIAL MASONRY (INCL. MASONRY WATERPROOFING) <i>BRICKLAYERS LOCAL 3 (NEWTON)</i>	02/01/2020	\$54.40	\$10.75	\$21.94	\$0.00	\$87.09
	08/01/2020	\$55.75	\$10.75	\$22.09	\$0.00	\$88.59
	02/01/2021	\$56.39	\$10.75	\$22.09	\$0.00	\$89.23
	08/01/2021	\$57.79	\$10.75	\$22.25	\$0.00	\$90.79
	02/01/2022	\$58.38	\$10.75	\$22.25	\$0.00	\$91.38

Issue Date: 06/10/2020

Wage Request Number: 20200610-060

Page 3 of 36

Classification

Effective Date Base Wage Health Pension Supplemental Unemployment Total Rate

Apprentice - BRICK/PLASTER/CEMENT MASON - Local 3 Newton

Effective Date - 02/01/2020

Step	percent	Apprentice Base Wage	Health	Pension	Supplemental Unemployment	Total Rate
1	50	\$27.20	\$10.75	\$21.94	\$0.00	\$59.89
2	60	\$32.64	\$10.75	\$21.94	\$0.00	\$65.33
3	70	\$38.08	\$10.75	\$21.94	\$0.00	\$70.77
4	80	\$43.52	\$10.75	\$21.94	\$0.00	\$76.21
5	90	\$48.96	\$10.75	\$21.94	\$0.00	\$81.65

Effective Date - 08/01/2020

Step	percent	Apprentice Base Wage	Health	Pension	Supplemental Unemployment	Total Rate
1	50	\$27.88	\$10.75	\$22.09	\$0.00	\$60.72
2	60	\$33.45	\$10.75	\$22.09	\$0.00	\$66.29
3	70	\$39.03	\$10.75	\$22.09	\$0.00	\$71.87
4	80	\$44.60	\$10.75	\$22.09	\$0.00	\$77.44
5	90	\$50.18	\$10.75	\$22.09	\$0.00	\$83.02

Notes:

Apprentice to Journeyworker Ratio:1:5

BULLDOZER/GRADER/SCRAPER <i>OPERATING ENGINEERS LOCAL 4</i>	06/01/2020	\$48.81	\$13.00	\$15.70	\$0.00	\$77.51
	12/01/2020	\$49.95	\$13.00	\$15.70	\$0.00	\$78.65
	06/01/2021	\$51.04	\$13.00	\$15.70	\$0.00	\$79.74
	12/01/2021	\$52.18	\$13.00	\$15.70	\$0.00	\$80.88
For apprentice rates see "Apprentice- OPERATING ENGINEERS"						
CAISSON & UNDERPINNING BOTTOM MAN <i>LABORERS - FOUNDATION AND MARINE</i>	06/01/2020	\$40.30	\$8.60	\$17.24	\$0.00	\$66.14
	12/01/2020	\$41.28	\$8.60	\$17.24	\$0.00	\$67.12
	06/01/2021	\$42.30	\$8.60	\$17.24	\$0.00	\$68.14
	12/01/2021	\$43.31	\$8.60	\$17.24	\$0.00	\$69.15
For apprentice rates see "Apprentice- LABORER"						
CAISSON & UNDERPINNING LABORER <i>LABORERS - FOUNDATION AND MARINE</i>	06/01/2020	\$39.15	\$8.60	\$17.24	\$0.00	\$64.99
	12/01/2020	\$40.13	\$8.60	\$17.24	\$0.00	\$65.97
	06/01/2021	\$41.15	\$8.60	\$17.24	\$0.00	\$66.99
	12/01/2021	\$42.16	\$8.60	\$17.24	\$0.00	\$68.00
For apprentice rates see "Apprentice- LABORER"						
CAISSON & UNDERPINNING TOP MAN <i>LABORERS - FOUNDATION AND MARINE</i>	06/01/2020	\$39.15	\$8.60	\$17.24	\$0.00	\$64.99
	12/01/2020	\$40.13	\$8.60	\$17.24	\$0.00	\$65.97
	06/01/2021	\$41.15	\$8.60	\$17.24	\$0.00	\$66.99
	12/01/2021	\$42.16	\$8.60	\$17.24	\$0.00	\$68.00
For apprentice rates see "Apprentice- LABORER"						
CARBIDE CORE DRILL OPERATOR <i>LABORERS - ZONE 1</i>	06/01/2020	\$39.40	\$8.60	\$17.09	\$0.00	\$65.09
	12/01/2020	\$40.38	\$8.60	\$17.09	\$0.00	\$66.07
	06/01/2021	\$41.40	\$8.60	\$17.09	\$0.00	\$67.09
	12/01/2021	\$42.41	\$8.60	\$17.09	\$0.00	\$68.10
For apprentice rates see "Apprentice- LABORER"						

Issue Date: 06/10/2020

Wage Request Number: 20200610-060

Page 4 of 36

Classification	Effective Date	Base Wage	Health	Pension	Supplemental Unemployment	Total Rate
CARPENTER	03/01/2020	\$42.50	\$9.40	\$18.95	\$0.00	\$70.85
CARPENTERS -ZONE 2 (Eastern Massachusetts)	09/01/2020	\$43.15	\$9.40	\$18.95	\$0.00	\$71.50
	03/01/2021	\$43.75	\$9.40	\$18.95	\$0.00	\$72.10
	09/01/2021	\$44.40	\$9.40	\$18.95	\$0.00	\$72.75
	03/01/2022	\$45.00	\$9.40	\$18.95	\$0.00	\$73.35
	09/01/2022	\$45.65	\$9.40	\$18.95	\$0.00	\$74.00
	03/01/2023	\$46.25	\$9.40	\$18.95	\$0.00	\$74.60

Apprentice - CARPENTER - Zone 2 Eastern MA

Effective Date - 03/01/2020

Step	percent	Apprentice Base Wage	Health	Pension	Supplemental Unemployment	Total Rate
1	50	\$21.25	\$9.40	\$1.73	\$0.00	\$32.38
2	60	\$25.50	\$9.40	\$1.73	\$0.00	\$36.63
3	70	\$29.75	\$9.40	\$13.76	\$0.00	\$52.91
4	75	\$31.88	\$9.40	\$13.76	\$0.00	\$55.04
5	80	\$34.00	\$9.40	\$15.49	\$0.00	\$58.89
6	80	\$34.00	\$9.40	\$15.49	\$0.00	\$58.89
7	90	\$38.25	\$9.40	\$17.22	\$0.00	\$64.87
8	90	\$38.25	\$9.40	\$17.22	\$0.00	\$64.87

Effective Date - 09/01/2020

Step	percent	Apprentice Base Wage	Health	Pension	Supplemental Unemployment	Total Rate
1	50	\$21.58	\$9.40	\$1.73	\$0.00	\$32.71
2	60	\$25.89	\$9.40	\$1.73	\$0.00	\$37.02
3	70	\$30.21	\$9.40	\$13.76	\$0.00	\$53.37
4	75	\$32.36	\$9.40	\$13.76	\$0.00	\$55.52
5	80	\$34.52	\$9.40	\$15.49	\$0.00	\$59.41
6	80	\$34.52	\$9.40	\$15.49	\$0.00	\$59.41
7	90	\$38.84	\$9.40	\$17.22	\$0.00	\$65.46
8	90	\$38.84	\$9.40	\$17.22	\$0.00	\$65.46

Notes:

% Indentured After 10/1/17; 45/45/55/55/70/70/80/80
 Step 1&2 \$30.26/ 3&4 \$36.18/ 5&6 \$54.64/ 7&8 \$60.62

Apprentice to Journeyworker Ratio:1:5

CARPENTER WOOD FRAME	10/01/2019	\$27.95	\$7.07	\$7.86	\$0.00	\$42.88
CARPENTERS -ZONE 2 (Wood Frame)						

All Aspects of New Wood Frame Work

Classification

Effective Date Base Wage Health Pension Supplemental Unemployment Total Rate

Apprentice - CARPENTER (Wood Frame) - Zone 2

Effective Date - 10/01/2019

Step	percent	Apprentice Base Wage	Health	Pension	Supplemental Unemployment	Total Rate
1	60	\$16.77	\$7.07	\$0.00	\$0.00	\$23.84
2	60	\$16.77	\$7.07	\$0.00	\$0.00	\$23.84
3	65	\$18.17	\$7.07	\$7.86	\$0.00	\$33.10
4	70	\$19.57	\$7.07	\$7.86	\$0.00	\$34.50
5	75	\$20.96	\$7.07	\$7.86	\$0.00	\$35.89
6	80	\$22.36	\$7.07	\$7.86	\$0.00	\$37.29
7	85	\$23.76	\$7.07	\$7.86	\$0.00	\$38.69
8	90	\$25.16	\$7.07	\$7.86	\$0.00	\$40.09

Notes:

% Indentured After 10/1/17; 45/45/55/55/70/70/80/80
Step 1&2 \$19.65/ 3&4 \$27.19/ 5&6 \$34.50/ 7&8 \$37.29

Apprentice to Journeyworker Ratio:1:5

CEMENT MASONRY/PLASTERING BRICKLAYERS LOCAL 3 (NEWTON)	01/01/2020	\$49.07	\$12.75	\$22.41	\$0.62	\$84.85
---	------------	---------	---------	---------	--------	---------

Apprentice - CEMENT MASONRY/PLASTERING - Eastern Mass (Newton)

Effective Date - 01/01/2020

Step	percent	Apprentice Base Wage	Health	Pension	Supplemental Unemployment	Total Rate
1	50	\$24.54	\$12.75	\$15.41	\$0.00	\$52.70
2	60	\$29.44	\$12.75	\$17.41	\$0.62	\$60.22
3	65	\$31.90	\$12.75	\$18.41	\$0.62	\$63.68
4	70	\$34.35	\$12.75	\$19.41	\$0.62	\$67.13
5	75	\$36.80	\$12.75	\$20.41	\$0.62	\$70.58
6	80	\$39.26	\$12.75	\$21.41	\$0.62	\$74.04
7	90	\$44.16	\$12.75	\$22.41	\$0.62	\$79.94

Notes:

Steps 3,4 are 500 hrs. All other steps are 1,000 hrs.

Apprentice to Journeyworker Ratio:1:3

CHAIN SAW OPERATOR LABORERS - ZONE 1	06/01/2020	\$39.40	\$8.60	\$17.09	\$0.00	\$65.09
	12/01/2020	\$40.38	\$8.60	\$17.09	\$0.00	\$66.07
	06/01/2021	\$41.40	\$8.60	\$17.09	\$0.00	\$67.09
	12/01/2021	\$42.41	\$8.60	\$17.09	\$0.00	\$68.10

For apprentice rates see "Apprentice- LABORER"

CLAM SHELLS/SLURRY BUCKETS/HEADING MACHINES OPERATING ENGINEERS LOCAL 4	06/01/2020	\$50.33	\$13.00	\$15.70	\$0.00	\$79.03
	12/01/2020	\$51.48	\$13.00	\$15.70	\$0.00	\$80.18
	06/01/2021	\$52.58	\$13.00	\$15.70	\$0.00	\$81.28
	12/01/2021	\$53.73	\$13.00	\$15.70	\$0.00	\$82.43

For apprentice rates see "Apprentice- OPERATING ENGINEERS"

Issue Date: 06/10/2020

Wage Request Number: 20200610-060

Page 6 of 36

Classification	Effective Date	Base Wage	Health	Pension	Supplemental Unemployment	Total Rate
COMPRESSOR OPERATOR <i>OPERATING ENGINEERS LOCAL 4</i>	06/01/2020	\$32.72	\$13.00	\$15.70	\$0.00	\$61.42
	12/01/2020	\$33.50	\$13.00	\$15.70	\$0.00	\$62.20
	06/01/2021	\$34.25	\$13.00	\$15.70	\$0.00	\$62.95
	12/01/2021	\$35.04	\$13.00	\$15.70	\$0.00	\$63.74
For apprentice rates see "Apprentice- OPERATING ENGINEERS"						
DELEADER (BRIDGE) <i>PAINTERS LOCAL 35 - ZONE 2</i>	01/01/2020	\$50.96	\$8.20	\$22.10	\$0.00	\$81.26
	07/01/2020	\$51.51	\$8.25	\$22.40	\$0.00	\$82.16
	01/01/2021	\$52.06	\$8.25	\$22.75	\$0.00	\$83.06

Apprentice - PAINTER Local 35 - BRIDGES/TANKS

Effective Date - 01/01/2020

Step	percent	Apprentice Base Wage	Health	Pension	Supplemental Unemployment	Total Rate
1	50	\$25.48	\$8.20	\$0.00	\$0.00	\$33.68
2	55	\$28.03	\$8.20	\$5.94	\$0.00	\$42.17
3	60	\$30.58	\$8.20	\$6.48	\$0.00	\$45.26
4	65	\$33.12	\$8.20	\$7.02	\$0.00	\$48.34
5	70	\$35.67	\$8.20	\$18.86	\$0.00	\$62.73
6	75	\$38.22	\$8.20	\$19.40	\$0.00	\$65.82
7	80	\$40.77	\$8.20	\$19.94	\$0.00	\$68.91
8	90	\$45.86	\$8.20	\$21.02	\$0.00	\$75.08

Effective Date - 07/01/2020

Step	percent	Apprentice Base Wage	Health	Pension	Supplemental Unemployment	Total Rate
1	50	\$25.76	\$8.25	\$0.00	\$0.00	\$34.01
2	55	\$28.33	\$8.25	\$6.05	\$0.00	\$42.63
3	60	\$30.91	\$8.25	\$6.60	\$0.00	\$45.76
4	65	\$33.48	\$8.25	\$7.15	\$0.00	\$48.88
5	70	\$36.06	\$8.25	\$19.10	\$0.00	\$63.41
6	75	\$38.63	\$8.25	\$19.65	\$0.00	\$66.53
7	80	\$41.21	\$8.25	\$20.20	\$0.00	\$69.66
8	90	\$46.36	\$8.25	\$21.30	\$0.00	\$75.91

Notes:

Steps are 750 hrs.

Apprentice to Journeyworker Ratio:1:1

DEMO: ADZEMAN <i>LABORERS - ZONE 1</i>	12/01/2019	\$39.30	\$8.10	\$16.60	\$0.00	\$64.00
For apprentice rates see "Apprentice- LABORER"						
DEMO: BACKHOE/LOADER/HAMMER OPERATOR <i>LABORERS - ZONE 1</i>	12/01/2019	\$40.30	\$8.10	\$16.60	\$0.00	\$65.00
For apprentice rates see "Apprentice- LABORER"						
DEMO: BURNERS <i>LABORERS - ZONE 1</i>	12/01/2019	\$40.05	\$8.10	\$16.60	\$0.00	\$64.75
For apprentice rates see "Apprentice- LABORER"						
DEMO: CONCRETE CUTTER/SAWYER <i>LABORERS - ZONE 1</i>	12/01/2019	\$40.30	\$8.10	\$16.60	\$0.00	\$65.00

Issue Date: 06/10/2020

Wage Request Number: 20200610-060

Page 7 of 36

Classification	Effective Date	Base Wage	Health	Pension	Supplemental Unemployment	Total Rate
For apprentice rates see "Apprentice- LABORER"						
DEMO: JACKHAMMER OPERATOR <i>LABORERS - ZONE 1</i>	12/01/2019	\$40.05	\$8.10	\$16.60	\$0.00	\$64.75
For apprentice rates see "Apprentice- LABORER"						
DEMO: WRECKING LABORER <i>LABORERS - ZONE 1</i>	12/01/2019	\$39.30	\$8.10	\$16.60	\$0.00	\$64.00
For apprentice rates see "Apprentice- LABORER"						
DIRECTIONAL DRILL MACHINE OPERATOR <i>OPERATING ENGINEERS LOCAL 4</i>	06/01/2020	\$48.81	\$13.00	\$15.70	\$0.00	\$77.51
	12/01/2020	\$49.95	\$13.00	\$15.70	\$0.00	\$78.65
	06/01/2021	\$51.04	\$13.00	\$15.70	\$0.00	\$79.74
	12/01/2021	\$52.18	\$13.00	\$15.70	\$0.00	\$80.88
For apprentice rates see "Apprentice- OPERATING ENGINEERS"						
DIVER <i>PILE DRIVER LOCAL 56 (ZONE 1)</i>	08/01/2019	\$68.52	\$9.90	\$21.15	\$0.00	\$99.57
For apprentice rates see "Apprentice- PILE DRIVER"						
DIVER TENDER <i>PILE DRIVER LOCAL 56 (ZONE 1)</i>	08/01/2019	\$48.94	\$9.90	\$21.15	\$0.00	\$79.99
For apprentice rates see "Apprentice- PILE DRIVER"						
DIVER TENDER (EFFLUENT) <i>PILE DRIVER LOCAL 56 (ZONE 1)</i>	08/01/2019	\$73.41	\$9.90	\$21.15	\$0.00	\$104.46
For apprentice rates see "Apprentice- PILE DRIVER"						
DIVER/SLURRY (EFFLUENT) <i>PILE DRIVER LOCAL 56 (ZONE 1)</i>	08/01/2019	\$102.78	\$9.90	\$21.15	\$0.00	\$133.83
For apprentice rates see "Apprentice- PILE DRIVER"						
DRAWBRIDGE OPERATOR (Construction) <i>ELECTRICIANS LOCAL 103</i>	03/01/2020	\$53.50	\$13.00	\$19.20	\$0.00	\$85.70
	09/01/2020	\$54.93	\$13.00	\$19.25	\$0.00	\$87.18
	03/01/2021	\$56.13	\$13.00	\$19.28	\$0.00	\$88.41
	09/01/2021	\$57.56	\$13.00	\$19.33	\$0.00	\$89.89
	03/01/2022	\$58.76	\$13.00	\$19.36	\$0.00	\$91.12
	09/01/2022	\$60.19	\$13.00	\$19.41	\$0.00	\$92.60
	03/01/2023	\$61.39	\$13.00	\$19.44	\$0.00	\$93.83
For apprentice rates see "Apprentice- ELECTRICIAN"						
ELECTRICIAN <i>ELECTRICIANS LOCAL 103</i>	03/01/2020	\$53.50	\$13.00	\$19.20	\$0.00	\$85.70
	09/01/2020	\$54.93	\$13.00	\$19.25	\$0.00	\$87.18
	03/01/2021	\$56.13	\$13.00	\$19.28	\$0.00	\$88.41
	09/01/2021	\$57.56	\$13.00	\$19.33	\$0.00	\$89.89
	03/01/2022	\$58.76	\$13.00	\$19.36	\$0.00	\$91.12
	09/01/2022	\$60.19	\$13.00	\$19.41	\$0.00	\$92.60
	03/01/2023	\$61.39	\$13.00	\$19.44	\$0.00	\$93.83

Issue Date: 06/10/2020

Wage Request Number: 20200610-060

Page 8 of 36

Classification

Effective Date Base Wage Health Pension Supplemental Unemployment Total Rate

Apprentice - *ELECTRICIAN - Local 103*

Effective Date - 03/01/2020

Step	percent	Apprentice Base Wage	Health	Pension	Supplemental Unemployment	Total Rate
1	40	\$21.40	\$13.00	\$0.64	\$0.00	\$35.04
2	40	\$21.40	\$13.00	\$0.64	\$0.00	\$35.04
3	45	\$24.08	\$13.00	\$14.62	\$0.00	\$51.70
4	45	\$24.08	\$13.00	\$14.62	\$0.00	\$51.70
5	50	\$26.75	\$13.00	\$15.04	\$0.00	\$54.79
6	55	\$29.43	\$13.00	\$15.46	\$0.00	\$57.89
7	60	\$32.10	\$13.00	\$15.87	\$0.00	\$60.97
8	65	\$34.78	\$13.00	\$16.29	\$0.00	\$64.07
9	70	\$37.45	\$13.00	\$16.70	\$0.00	\$67.15
10	75	\$40.13	\$13.00	\$17.12	\$0.00	\$70.25

Effective Date - 09/01/2020

Step	percent	Apprentice Base Wage	Health	Pension	Supplemental Unemployment	Total Rate
1	40	\$21.97	\$13.00	\$0.66	\$0.00	\$35.63
2	40	\$21.97	\$13.00	\$0.66	\$0.00	\$35.63
3	45	\$24.72	\$13.00	\$14.64	\$0.00	\$52.36
4	45	\$24.72	\$13.00	\$14.64	\$0.00	\$52.36
5	50	\$27.47	\$13.00	\$15.06	\$0.00	\$55.53
6	55	\$30.21	\$13.00	\$15.49	\$0.00	\$58.70
7	60	\$32.96	\$13.00	\$15.90	\$0.00	\$61.86
8	65	\$35.70	\$13.00	\$16.32	\$0.00	\$65.02
9	70	\$38.45	\$13.00	\$16.73	\$0.00	\$68.18
10	75	\$41.20	\$13.00	\$17.16	\$0.00	\$71.36

Notes: :

App Prior 1/1/03; 30/35/40/45/50/55/65/70/75/80

Apprentice to Journeyworker Ratio:2:3***

ELEVATOR CONSTRUCTOR	01/01/2020	\$61.42	\$15.73	\$18.41	\$0.00	\$95.56
ELEVATOR CONSTRUCTORS LOCAL 4	01/01/2021	\$63.47	\$15.88	\$19.31	\$0.00	\$98.66
	01/01/2022	\$65.62	\$16.03	\$20.21	\$0.00	\$101.86

Classification

Effective Date Base Wage Health Pension Supplemental Unemployment Total Rate

Apprentice - ELEVATOR CONSTRUCTOR - Local 4

Effective Date - 01/01/2020

Step	percent	Apprentice Base Wage	Health	Pension	Supplemental Unemployment	Total Rate
1	50	\$30.71	\$15.73	\$0.00	\$0.00	\$46.44
2	55	\$33.78	\$15.73	\$18.41	\$0.00	\$67.92
3	65	\$39.92	\$15.73	\$18.41	\$0.00	\$74.06
4	70	\$42.99	\$15.73	\$18.41	\$0.00	\$77.13
5	80	\$49.14	\$15.73	\$18.41	\$0.00	\$83.28

Effective Date - 01/01/2021

Step	percent	Apprentice Base Wage	Health	Pension	Supplemental Unemployment	Total Rate
1	50	\$31.74	\$15.88	\$0.00	\$0.00	\$47.62
2	55	\$34.91	\$15.88	\$19.31	\$0.00	\$70.10
3	65	\$41.26	\$15.88	\$19.31	\$0.00	\$76.45
4	70	\$44.43	\$15.88	\$19.31	\$0.00	\$79.62
5	80	\$50.78	\$15.88	\$19.31	\$0.00	\$85.97

Notes:

Steps 1-2 are 6 mos.; Steps 3-5 are 1 year

Apprentice to Journeyworker Ratio:1:1

ELEVATOR CONSTRUCTOR HELPER <i>ELEVATOR CONSTRUCTORS LOCAL 4</i>	01/01/2020	\$42.99	\$15.73	\$18.41	\$0.00	\$77.13
	01/01/2021	\$44.43	\$15.88	\$19.31	\$0.00	\$79.62
	01/01/2022	\$45.93	\$16.03	\$20.21	\$0.00	\$82.17
For apprentice rates see "Apprentice - ELEVATOR CONSTRUCTOR"						
FENCE & GUARD RAIL ERECTOR <i>LABORERS - ZONE 1</i>	06/01/2020	\$39.40	\$8.60	\$17.09	\$0.00	\$65.09
	12/01/2020	\$40.38	\$8.60	\$17.09	\$0.00	\$66.07
	06/01/2021	\$41.40	\$8.60	\$17.09	\$0.00	\$67.09
	12/01/2021	\$42.41	\$8.60	\$17.09	\$0.00	\$68.10
For apprentice rates see "Apprentice- LABORER"						
FIELD ENG. INST. PERSON-BLDG, SITE, HVY/HWY <i>OPERATING ENGINEERS LOCAL 4</i>	05/01/2020	\$44.73	\$12.50	\$15.70	\$0.00	\$72.93
	11/01/2020	\$45.73	\$12.50	\$15.70	\$0.00	\$73.93
	05/01/2021	\$46.88	\$12.50	\$15.70	\$0.00	\$75.08
	11/01/2021	\$47.88	\$12.50	\$15.70	\$0.00	\$76.08
	05/01/2022	\$49.03	\$12.50	\$15.70	\$0.00	\$77.23
For apprentice rates see "Apprentice- OPERATING ENGINEERS"						
FIELD ENG. PARTY CHIEF-BLDG, SITE, HVY/HWY <i>OPERATING ENGINEERS LOCAL 4</i>	05/01/2020	\$46.23	\$12.50	\$15.70	\$0.00	\$74.43
	11/01/2020	\$47.24	\$12.50	\$15.70	\$0.00	\$75.44
	05/01/2021	\$48.40	\$12.50	\$15.70	\$0.00	\$76.60
	11/01/2021	\$49.41	\$12.50	\$15.70	\$0.00	\$77.61
	05/01/2022	\$50.57	\$12.50	\$15.70	\$0.00	\$78.77
For apprentice rates see "Apprentice- OPERATING ENGINEERS"						

Classification	Effective Date	Base Wage	Health	Pension	Supplemental Unemployment	Total Rate
FIELD ENG. ROD PERSON-BLDG,SITE,HVY/HWY <i>OPERATING ENGINEERS LOCAL 4</i>	05/01/2020	\$22.64	\$12.50	\$15.70	\$0.00	\$50.84
	11/01/2020	\$23.23	\$12.50	\$15.70	\$0.00	\$51.43
	05/01/2021	\$23.91	\$12.50	\$15.70	\$0.00	\$52.11
	11/01/2021	\$24.51	\$12.50	\$15.70	\$0.00	\$52.71
	05/01/2022	\$25.18	\$12.50	\$15.70	\$0.00	\$53.38
For apprentice rates see "Apprentice- OPERATING ENGINEERS"						
FIRE ALARM INSTALLER <i>ELECTRICIANS LOCAL 103</i>	03/01/2020	\$53.50	\$13.00	\$19.20	\$0.00	\$85.70
	09/01/2020	\$54.93	\$13.00	\$19.25	\$0.00	\$87.18
	03/01/2021	\$56.13	\$13.00	\$19.28	\$0.00	\$88.41
	09/01/2021	\$57.56	\$13.00	\$19.33	\$0.00	\$89.89
	03/01/2022	\$58.76	\$13.00	\$19.36	\$0.00	\$91.12
	09/01/2022	\$60.19	\$13.00	\$19.41	\$0.00	\$92.60
	03/01/2023	\$61.39	\$13.00	\$19.44	\$0.00	\$93.83
For apprentice rates see "Apprentice- ELECTRICIAN"						
FIRE ALARM REPAIR / MAINTENANCE / COMMISSIONING <i>ELECTRICIANS LOCAL 103</i>	03/01/2020	\$40.13	\$13.00	\$17.12	\$0.00	\$70.25
	09/01/2020	\$41.20	\$13.00	\$17.16	\$0.00	\$71.36
	03/01/2021	\$42.66	\$13.00	\$17.27	\$0.00	\$72.93
	09/01/2021	\$44.32	\$13.00	\$17.38	\$0.00	\$74.70
	03/01/2022	\$45.83	\$13.00	\$17.49	\$0.00	\$76.32
	09/01/2022	\$47.55	\$13.00	\$17.62	\$0.00	\$78.17
	03/01/2023	\$49.11	\$13.00	\$17.73	\$0.00	\$79.84
For apprentice rates see "Apprentice- TELECOMMUNICATIONS TECHNICIAN"						
FIREMAN (ASST. ENGINEER) <i>OPERATING ENGINEERS LOCAL 4</i>	06/01/2020	\$40.30	\$13.00	\$15.70	\$0.00	\$69.00
	12/01/2020	\$41.25	\$13.00	\$15.70	\$0.00	\$69.95
	06/01/2021	\$42.16	\$13.00	\$15.70	\$0.00	\$70.86
	12/01/2021	\$43.11	\$13.00	\$15.70	\$0.00	\$71.81
For apprentice rates see "Apprentice- OPERATING ENGINEERS"						
FLAGGER & SIGNALER <i>LABORERS - ZONE 1</i>	06/01/2020	\$23.50	\$8.60	\$17.09	\$0.00	\$49.19
	12/01/2020	\$24.50	\$8.60	\$17.09	\$0.00	\$50.19
	06/01/2021	\$24.50	\$8.60	\$17.09	\$0.00	\$50.19
	12/01/2021	\$24.50	\$8.60	\$17.09	\$0.00	\$50.19
For apprentice rates see "Apprentice- LABORER"						
FLOORCOVERER <i>FLOORCOVERERS LOCAL 2168 ZONE 1</i>	03/01/2020	\$47.05	\$9.40	\$19.25	\$0.00	\$75.70
	09/01/2020	\$47.85	\$9.40	\$19.25	\$0.00	\$76.50
	03/01/2021	\$48.65	\$9.40	\$19.25	\$0.00	\$77.30
	09/01/2021	\$49.45	\$9.40	\$19.25	\$0.00	\$78.10
	03/01/2022	\$50.25	\$9.40	\$19.25	\$0.00	\$78.90

Classification

Effective Date Base Wage Health Pension Supplemental Unemployment Total Rate

Apprentice - FLOORCOVERER - Local 2168 Zone 1

Effective Date - 03/01/2020

Step	percent	Apprentice Base Wage	Health	Pension	Supplemental Unemployment	Total Rate
1	50	\$23.53	\$9.40	\$1.79	\$0.00	\$34.72
2	55	\$25.88	\$9.40	\$1.79	\$0.00	\$37.07
3	60	\$28.23	\$9.40	\$13.88	\$0.00	\$51.51
4	65	\$30.58	\$9.40	\$13.88	\$0.00	\$53.86
5	70	\$32.94	\$9.40	\$15.67	\$0.00	\$58.01
6	75	\$35.29	\$9.40	\$15.67	\$0.00	\$60.36
7	80	\$37.64	\$9.40	\$17.46	\$0.00	\$64.50
8	85	\$39.99	\$9.40	\$17.46	\$0.00	\$66.85

Effective Date - 09/01/2020

Step	percent	Apprentice Base Wage	Health	Pension	Supplemental Unemployment	Total Rate
1	50	\$23.93	\$9.40	\$1.79	\$0.00	\$35.12
2	55	\$26.32	\$9.40	\$1.79	\$0.00	\$37.51
3	60	\$28.71	\$9.40	\$13.88	\$0.00	\$51.99
4	65	\$31.10	\$9.40	\$13.88	\$0.00	\$54.38
5	70	\$33.50	\$9.40	\$15.67	\$0.00	\$58.57
6	75	\$35.89	\$9.40	\$15.67	\$0.00	\$60.96
7	80	\$38.28	\$9.40	\$17.46	\$0.00	\$65.14
8	85	\$40.67	\$9.40	\$17.46	\$0.00	\$67.53

Notes: Steps are 750 hrs.
 % After 09/1/17; 45/45/55/55/70/70/80/80 (1500hr Steps)
 Step 1&2 \$32.36/ 3&4 \$38.80/ 5&6 \$58.01/ 7&8 \$64.50

Apprentice to Journeyworker Ratio:1:1

FORK LIFT/CHERRY PICKER OPERATING ENGINEERS LOCAL 4	06/01/2020	\$49.33	\$13.00	\$15.70	\$0.00	\$78.03
	12/01/2020	\$50.48	\$13.00	\$15.70	\$0.00	\$79.18
	06/01/2021	\$51.58	\$13.00	\$15.70	\$0.00	\$80.28
	12/01/2021	\$52.73	\$13.00	\$15.70	\$0.00	\$81.43
For apprentice rates see "Apprentice- OPERATING ENGINEERS"						
GENERATOR/LIGHTING PLANT/HEATERS OPERATING ENGINEERS LOCAL 4	06/01/2020	\$32.72	\$13.00	\$15.70	\$0.00	\$61.42
	12/01/2020	\$33.50	\$13.00	\$15.70	\$0.00	\$62.20
	06/01/2021	\$34.25	\$13.00	\$15.70	\$0.00	\$62.95
	12/01/2021	\$35.04	\$13.00	\$15.70	\$0.00	\$63.74
For apprentice rates see "Apprentice- OPERATING ENGINEERS"						
GLAZIER (GLASS PLANK/AIR BARRIER/INTERIOR SYSTEMS) GLAZIERS LOCAL 35 (ZONE 2)	01/01/2020	\$40.46	\$8.20	\$22.10	\$0.00	\$70.76
	07/01/2020	\$41.01	\$8.25	\$22.40	\$0.00	\$71.66
	01/01/2021	\$41.56	\$8.25	\$21.75	\$0.00	\$71.56

Issue Date: 06/10/2020

Wage Request Number: 20200610-060

Page 12 of 36

Classification

Effective Date Base Wage Health Pension Supplemental Unemployment Total Rate

Apprentice - *GLAZIER - Local 35 Zone 2*

Effective Date - 01/01/2020

Step	percent	Apprentice Base Wage	Health	Pension	Supplemental Unemployment	Total Rate
1	50	\$20.23	\$8.20	\$0.00	\$0.00	\$28.43
2	55	\$22.25	\$8.20	\$5.94	\$0.00	\$36.39
3	60	\$24.28	\$8.20	\$6.48	\$0.00	\$38.96
4	65	\$26.30	\$8.20	\$7.02	\$0.00	\$41.52
5	70	\$28.32	\$8.20	\$18.86	\$0.00	\$55.38
6	75	\$30.35	\$8.20	\$19.40	\$0.00	\$57.95
7	80	\$32.37	\$8.20	\$19.94	\$0.00	\$60.51
8	90	\$36.41	\$8.20	\$21.02	\$0.00	\$65.63

Effective Date - 07/01/2020

Step	percent	Apprentice Base Wage	Health	Pension	Supplemental Unemployment	Total Rate
1	50	\$20.51	\$8.25	\$0.00	\$0.00	\$28.76
2	55	\$22.56	\$8.25	\$6.05	\$0.00	\$36.86
3	60	\$24.61	\$8.25	\$6.60	\$0.00	\$39.46
4	65	\$26.66	\$8.25	\$7.15	\$0.00	\$42.06
5	70	\$28.71	\$8.25	\$19.10	\$0.00	\$56.06
6	75	\$30.76	\$8.25	\$19.65	\$0.00	\$58.66
7	80	\$32.81	\$8.25	\$20.20	\$0.00	\$61.26
8	90	\$36.91	\$8.25	\$21.30	\$0.00	\$66.46

Notes:

Steps are 750 hrs.

Apprentice to Journeyworker Ratio:1:1

HOISTING ENGINEER/CRANES/GRADALLS	06/01/2020	\$49.33	\$13.00	\$15.70	\$0.00	\$78.03
OPERATING ENGINEERS LOCAL 4	12/01/2020	\$50.48	\$13.00	\$15.70	\$0.00	\$79.18
	06/01/2021	\$51.58	\$13.00	\$15.70	\$0.00	\$80.28
	12/01/2021	\$52.73	\$13.00	\$15.70	\$0.00	\$81.43

Issue Date: 06/10/2020

Wage Request Number: 20200610-060

Page 13 of 36

Classification

Effective Date Base Wage Health Pension Supplemental Unemployment Total Rate

Apprentice - OPERATING ENGINEERS - Local 4

Effective Date - 06/01/2020

Step	percent	Apprentice Base Wage	Health	Pension	Supplemental Unemployment	Total Rate
1	55	\$27.13	\$13.00	\$0.00	\$0.00	\$40.13
2	60	\$29.60	\$13.00	\$15.70	\$0.00	\$58.30
3	65	\$32.06	\$13.00	\$15.70	\$0.00	\$60.76
4	70	\$34.53	\$13.00	\$15.70	\$0.00	\$63.23
5	75	\$37.00	\$13.00	\$15.70	\$0.00	\$65.70
6	80	\$39.46	\$13.00	\$15.70	\$0.00	\$68.16
7	85	\$41.93	\$13.00	\$15.70	\$0.00	\$70.63
8	90	\$44.40	\$13.00	\$15.70	\$0.00	\$73.10

Effective Date - 12/01/2020

Step	percent	Apprentice Base Wage	Health	Pension	Supplemental Unemployment	Total Rate
1	55	\$27.76	\$13.00	\$0.00	\$0.00	\$40.76
2	60	\$30.29	\$13.00	\$15.70	\$0.00	\$58.99
3	65	\$32.81	\$13.00	\$15.70	\$0.00	\$61.51
4	70	\$35.34	\$13.00	\$15.70	\$0.00	\$64.04
5	75	\$37.86	\$13.00	\$15.70	\$0.00	\$66.56
6	80	\$40.38	\$13.00	\$15.70	\$0.00	\$69.08
7	85	\$42.91	\$13.00	\$15.70	\$0.00	\$71.61
8	90	\$45.43	\$13.00	\$15.70	\$0.00	\$74.13

Notes:

Apprentice to Journeyworker Ratio:1:6

HVAC (DUCTWORK)	02/01/2020	\$49.36	\$13.35	\$24.12	\$2.61	\$89.44
SHEETMETAL WORKERS LOCAL 17 - A	08/01/2020	\$50.96	\$13.35	\$24.12	\$2.66	\$91.09
	02/01/2021	\$52.61	\$13.35	\$24.12	\$2.71	\$92.79
	08/01/2021	\$54.36	\$13.35	\$24.12	\$2.76	\$94.59
	02/01/2022	\$56.11	\$13.35	\$24.12	\$2.81	\$96.39
For apprentice rates see "Apprentice- SHEET METAL WORKER"						
HVAC (ELECTRICAL CONTROLS)	03/01/2020	\$53.50	\$13.00	\$19.20	\$0.00	\$85.70
ELECTRICIANS LOCAL 103	09/01/2020	\$54.93	\$13.00	\$19.25	\$0.00	\$87.18
	03/01/2021	\$56.13	\$13.00	\$19.28	\$0.00	\$88.41
	09/01/2021	\$57.56	\$13.00	\$19.33	\$0.00	\$89.89
	03/01/2022	\$58.76	\$13.00	\$19.36	\$0.00	\$91.12
	09/01/2022	\$60.19	\$13.00	\$19.41	\$0.00	\$92.60
	03/01/2023	\$61.39	\$13.00	\$19.44	\$0.00	\$93.83
For apprentice rates see "Apprentice- ELECTRICIAN"						

Issue Date: 06/10/2020

Wage Request Number: 20200610-060

Page 14 of 36

Classification	Effective Date	Base Wage	Health	Pension	Supplemental Unemployment	Total Rate
HVAC (TESTING AND BALANCING - AIR) <i>SHEETMETAL WORKERS LOCAL 17 - A</i>	02/01/2020	\$49.36	\$13.35	\$24.12	\$2.61	\$89.44
	08/01/2020	\$50.96	\$13.35	\$24.12	\$2.66	\$91.09
	02/01/2021	\$52.61	\$13.35	\$24.12	\$2.71	\$92.79
	08/01/2021	\$54.36	\$13.35	\$24.12	\$2.76	\$94.59
	02/01/2022	\$56.11	\$13.35	\$24.12	\$2.81	\$96.39
For apprentice rates see "Apprentice- SHEET METAL WORKER"						
HVAC (TESTING AND BALANCING - WATER) <i>PIPEFITTERS LOCAL 537</i>	03/01/2020	\$56.19	\$10.95	\$19.74	\$0.00	\$86.88
	09/01/2020	\$57.69	\$10.95	\$19.74	\$0.00	\$88.38
	03/01/2021	\$59.19	\$10.95	\$19.74	\$0.00	\$89.88
For apprentice rates see "Apprentice- PIPEFITTER" or "PLUMBER/PIPEFITTER"						
HVAC MECHANIC <i>PIPEFITTERS LOCAL 537</i>	03/01/2020	\$56.19	\$10.95	\$19.74	\$0.00	\$86.88
	09/01/2020	\$57.69	\$10.95	\$19.74	\$0.00	\$88.38
	03/01/2021	\$59.19	\$10.95	\$19.74	\$0.00	\$89.88
For apprentice rates see "Apprentice- PIPEFITTER" or "PLUMBER/PIPEFITTER"						
HYDRAULIC DRILLS <i>LABORERS - ZONE 1</i>	06/01/2020	\$39.90	\$8.60	\$17.09	\$0.00	\$65.59
	12/01/2020	\$40.88	\$8.60	\$17.09	\$0.00	\$66.57
	06/01/2021	\$41.90	\$8.60	\$17.09	\$0.00	\$67.59
	12/01/2021	\$42.91	\$8.60	\$17.09	\$0.00	\$68.60
For apprentice rates see "Apprentice- LABORER"						
INSULATOR (PIPES & TANKS) <i>HEAT & FROST INSULATORS LOCAL 6 (BOSTON)</i>	09/01/2019	\$48.44	\$12.80	\$16.40	\$0.00	\$77.64

Apprentice - ASBESTOS INSULATOR (Pipes & Tanks) - Local 6 Boston

Effective Date - 09/01/2019

Step	percent	Apprentice Base Wage	Health	Pension	Supplemental Unemployment	Total Rate
1	50	\$24.22	\$12.80	\$11.90	\$0.00	\$48.92
2	60	\$29.06	\$12.80	\$12.80	\$0.00	\$54.66
3	70	\$33.91	\$12.80	\$13.70	\$0.00	\$60.41
4	80	\$38.75	\$12.80	\$14.60	\$0.00	\$66.15

Notes:

Steps are 1 year

Apprentice to Journeyworker Ratio:1:4

IRONWORKER/WELDER <i>IRONWORKERS LOCAL 7 (BOSTON AREA)</i>	03/16/2019	\$46.66	\$8.00	\$23.50	\$0.00	\$78.16
---	------------	---------	--------	---------	--------	---------

Classification Effective Date Base Wage Health Pension Supplemental Unemployment Total Rate

Apprentice - IRONWORKER - Local 7 Boston

Effective Date - 03/16/2019

Step	percent	Apprentice Base Wage	Health	Pension	Supplemental Unemployment	Total Rate
1	60	\$28.00	\$8.00	\$23.50	\$0.00	\$59.50
2	70	\$32.66	\$8.00	\$23.50	\$0.00	\$64.16
3	75	\$35.00	\$8.00	\$23.50	\$0.00	\$66.50
4	80	\$37.33	\$8.00	\$23.50	\$0.00	\$68.83
5	85	\$39.66	\$8.00	\$23.50	\$0.00	\$71.16
6	90	\$41.99	\$8.00	\$23.50	\$0.00	\$73.49

Notes:

** Structural 1:6; Ornamental 1:4

Apprentice to Journeyworker Ratio:**

JACKHAMMER & PAVING BREAKER OPERATOR LABORERS - ZONE 1	06/01/2020	\$39.40	\$8.60	\$17.09	\$0.00	\$65.09
	12/01/2020	\$40.38	\$8.60	\$17.09	\$0.00	\$66.07
	06/01/2021	\$41.40	\$8.60	\$17.09	\$0.00	\$67.09
	12/01/2021	\$42.41	\$8.60	\$17.09	\$0.00	\$68.10

For apprentice rates see "Apprentice- LABORER"

LABORER LABORERS - ZONE 1	06/01/2020	\$39.15	\$8.60	\$17.09	\$0.00	\$64.84
	12/01/2020	\$40.13	\$8.60	\$17.09	\$0.00	\$65.82
	06/01/2021	\$41.15	\$8.60	\$17.09	\$0.00	\$66.84
	12/01/2021	\$42.16	\$8.60	\$17.09	\$0.00	\$67.85

Apprentice - LABORER - Zone 1

Effective Date - 06/01/2020

Step	percent	Apprentice Base Wage	Health	Pension	Supplemental Unemployment	Total Rate
1	60	\$23.49	\$8.60	\$17.09	\$0.00	\$49.18
2	70	\$27.41	\$8.60	\$17.09	\$0.00	\$53.10
3	80	\$31.32	\$8.60	\$17.09	\$0.00	\$57.01
4	90	\$35.24	\$8.60	\$17.09	\$0.00	\$60.93

Effective Date - 12/01/2020

Step	percent	Apprentice Base Wage	Health	Pension	Supplemental Unemployment	Total Rate
1	60	\$24.08	\$8.60	\$17.09	\$0.00	\$49.77
2	70	\$28.09	\$8.60	\$17.09	\$0.00	\$53.78
3	80	\$32.10	\$8.60	\$17.09	\$0.00	\$57.79
4	90	\$36.12	\$8.60	\$17.09	\$0.00	\$61.81

Notes:

Apprentice to Journeyworker Ratio:1:5

Issue Date: 06/10/2020

Wage Request Number: 20200610-060

Page 16 of 36

Classification	Effective Date	Base Wage	Health	Pension	Supplemental Unemployment	Total Rate	
LABORER: CARPENTER TENDER <i>LABORERS - ZONE 1</i>	06/01/2020	\$39.15	\$8.60	\$17.09	\$0.00	\$64.84	
	12/01/2020	\$40.13	\$8.60	\$17.09	\$0.00	\$65.82	
	06/01/2021	\$41.15	\$8.60	\$17.09	\$0.00	\$66.84	
	12/01/2021	\$42.16	\$8.60	\$17.09	\$0.00	\$67.85	
For apprentice rates see "Apprentice- LABORER"							
LABORER: CEMENT FINISHER TENDER <i>LABORERS - ZONE 1</i>	06/01/2020	\$39.15	\$8.60	\$17.09	\$0.00	\$64.84	
	12/01/2020	\$40.13	\$8.60	\$17.09	\$0.00	\$65.82	
	06/01/2021	\$41.15	\$8.60	\$17.09	\$0.00	\$66.84	
	12/01/2021	\$42.16	\$8.60	\$17.09	\$0.00	\$67.85	
For apprentice rates see "Apprentice- LABORER"							
LABORER: HAZARDOUS WASTE/ASBESTOS REMOVER <i>LABORERS - ZONE 1</i>	06/01/2020	\$39.30	\$8.60	\$17.09	\$0.00	\$64.99	
	For apprentice rates see "Apprentice- LABORER"						
	LABORER: MASON TENDER <i>LABORERS - ZONE 1</i>	06/01/2020	\$39.40	\$8.60	\$17.09	\$0.00	\$65.09
		12/01/2020	\$40.38	\$8.60	\$17.09	\$0.00	\$66.07
06/01/2021		\$41.40	\$8.60	\$17.09	\$0.00	\$67.09	
12/01/2021		\$42.41	\$8.60	\$17.09	\$0.00	\$68.10	
For apprentice rates see "Apprentice- LABORER"							
LABORER: MULTI-TRADE TENDER <i>LABORERS - ZONE 1</i>	06/01/2020	\$39.15	\$8.60	\$17.09	\$0.00	\$64.84	
	12/01/2020	\$40.13	\$8.60	\$17.09	\$0.00	\$65.82	
	06/01/2021	\$41.15	\$8.60	\$17.09	\$0.00	\$66.84	
	12/01/2021	\$42.16	\$8.60	\$17.09	\$0.00	\$67.85	
For apprentice rates see "Apprentice- LABORER"							
LABORER: TREE REMOVER <i>LABORERS - ZONE 1</i>	06/01/2020	\$39.15	\$8.60	\$17.09	\$0.00	\$64.84	
	12/01/2020	\$40.13	\$8.60	\$17.09	\$0.00	\$65.82	
	06/01/2021	\$41.15	\$8.60	\$17.09	\$0.00	\$66.84	
	12/01/2021	\$42.16	\$8.60	\$17.09	\$0.00	\$67.85	
This classification applies to the removal of standing trees, and the trimming and removal of branches and limbs when related to public works construction or site clearance incidental to construction. For apprentice rates see "Apprentice- LABORER"							
LASER BEAM OPERATOR <i>LABORERS - ZONE 1</i>	06/01/2020	\$39.40	\$8.60	\$17.09	\$0.00	\$65.09	
	12/01/2020	\$40.38	\$8.60	\$17.09	\$0.00	\$66.07	
	06/01/2021	\$41.40	\$8.60	\$17.09	\$0.00	\$67.09	
	12/01/2021	\$42.41	\$8.60	\$17.09	\$0.00	\$68.10	
For apprentice rates see "Apprentice- LABORER"							
MARBLE & TILE FINISHERS <i>BRICKLAYERS LOCAL 3 - MARBLE & TILE</i>	02/01/2020	\$41.49	\$10.75	\$20.12	\$0.00	\$72.36	
	08/01/2020	\$42.57	\$10.75	\$20.27	\$0.00	\$73.59	
	02/01/2021	\$43.08	\$10.75	\$20.27	\$0.00	\$74.10	
	08/01/2021	\$44.20	\$10.75	\$20.43	\$0.00	\$75.38	
	02/01/2022	\$44.67	\$10.75	\$20.43	\$0.00	\$75.85	

Classification

Effective Date Base Wage Health Pension Supplemental Unemployment Total Rate

Apprentice - MARBLE & TILE FINISHER - Local 3 Marble & Tile

Effective Date - 02/01/2020

Step	percent	Apprentice Base Wage	Health	Pension	Supplemental Unemployment	Total Rate
1	50	\$20.75	\$10.75	\$20.12	\$0.00	\$51.62
2	60	\$24.89	\$10.75	\$20.12	\$0.00	\$55.76
3	70	\$29.04	\$10.75	\$20.12	\$0.00	\$59.91
4	80	\$33.19	\$10.75	\$20.12	\$0.00	\$64.06
5	90	\$37.34	\$10.75	\$20.12	\$0.00	\$68.21

Effective Date - 08/01/2020

Step	percent	Apprentice Base Wage	Health	Pension	Supplemental Unemployment	Total Rate
1	50	\$21.29	\$10.75	\$20.27	\$0.00	\$52.31
2	60	\$25.54	\$10.75	\$20.27	\$0.00	\$56.56
3	70	\$29.80	\$10.75	\$20.27	\$0.00	\$60.82
4	80	\$34.06	\$10.75	\$20.27	\$0.00	\$65.08
5	90	\$38.31	\$10.75	\$20.27	\$0.00	\$69.33

Notes:

Apprentice to Journeyworker Ratio:1:3

MARBLE MASONS, TILELAYERS & TERRAZZO MECH BRICKLAYERS LOCAL 3 - MARBLE & TILE	02/01/2020	\$54.42	\$10.75	\$21.93	\$0.00	\$87.10
	08/01/2020	\$55.77	\$10.75	\$22.08	\$0.00	\$88.60
	02/01/2021	\$56.41	\$10.75	\$22.08	\$0.00	\$89.24
	08/01/2021	\$57.81	\$10.75	\$22.24	\$0.00	\$90.80
	02/01/2022	\$58.38	\$10.75	\$22.24	\$0.00	\$91.37

Classification

Effective Date Base Wage Health Pension Supplemental Unemployment Total Rate

Apprentice - MARBLE-TILE-TERRAZZO MECHANIC - Local 3 Marble & Tile

Effective Date - 02/01/2020

Step	percent	Apprentice Base Wage	Health	Pension	Supplemental Unemployment	Total Rate
1	50	\$27.21	\$10.75	\$21.93	\$0.00	\$59.89
2	60	\$32.65	\$10.75	\$21.93	\$0.00	\$65.33
3	70	\$38.09	\$10.75	\$21.93	\$0.00	\$70.77
4	80	\$43.54	\$10.75	\$21.93	\$0.00	\$76.22
5	90	\$48.98	\$10.75	\$21.93	\$0.00	\$81.66

Effective Date - 08/01/2020

Step	percent	Apprentice Base Wage	Health	Pension	Supplemental Unemployment	Total Rate
1	50	\$27.89	\$10.75	\$22.08	\$0.00	\$60.72
2	60	\$33.46	\$10.75	\$22.08	\$0.00	\$66.29
3	70	\$39.04	\$10.75	\$22.08	\$0.00	\$71.87
4	80	\$44.62	\$10.75	\$22.08	\$0.00	\$77.45
5	90	\$50.19	\$10.75	\$22.08	\$0.00	\$83.02

Notes:

Apprentice to Journeyworker Ratio:1:5

MECH. SWEEPER OPERATOR (ON CONST. SITES) <i>OPERATING ENGINEERS LOCAL 4</i>	06/01/2020	\$48.81	\$13.00	\$15.70	\$0.00	\$77.51
	12/01/2020	\$49.95	\$13.00	\$15.70	\$0.00	\$78.65
	06/01/2021	\$51.04	\$13.00	\$15.70	\$0.00	\$79.74
	12/01/2021	\$52.18	\$13.00	\$15.70	\$0.00	\$80.88

For apprentice rates see "Apprentice- OPERATING ENGINEERS"

MECHANICS MAINTENANCE <i>OPERATING ENGINEERS LOCAL 4</i>	06/01/2020	\$48.81	\$13.00	\$15.70	\$0.00	\$77.51
	12/01/2020	\$49.95	\$13.00	\$15.70	\$0.00	\$78.65
	06/01/2021	\$51.04	\$13.00	\$15.70	\$0.00	\$79.74
	12/01/2021	\$52.18	\$13.00	\$15.70	\$0.00	\$80.88

For apprentice rates see "Apprentice- OPERATING ENGINEERS"

MILLWRIGHT (Zone 1) <i>MILLWRIGHTS LOCAL 1121 - Zone 1</i>	04/01/2019	\$42.22	\$9.90	\$18.50	\$0.00	\$70.62
--	------------	---------	--------	---------	--------	---------

Classification

Effective Date Base Wage Health Pension Supplemental Unemployment Total Rate

Apprentice - MILLWRIGHT - Local 1121 Zone 1

Effective Date - 04/01/2019

Step	percent	Apprentice Base Wage	Health	Pension	Supplemental Unemployment	Total Rate
1	55	\$23.22	\$9.90	\$5.31	\$0.00	\$38.43
2	65	\$27.44	\$9.90	\$15.13	\$0.00	\$52.47
3	75	\$31.67	\$9.90	\$16.10	\$0.00	\$57.67
4	85	\$35.89	\$9.90	\$17.06	\$0.00	\$62.85

Notes:

Steps are 2,000 hours

Apprentice to Journeyworker Ratio:1:5

MORTAR MIXER LABORERS - ZONE 1	06/01/2020	\$39.40	\$8.60	\$17.09	\$0.00	\$65.09
	12/01/2020	\$40.38	\$8.60	\$17.09	\$0.00	\$66.07
	06/01/2021	\$41.40	\$8.60	\$17.09	\$0.00	\$67.09
	12/01/2021	\$42.41	\$8.60	\$17.09	\$0.00	\$68.10
For apprentice rates see "Apprentice- LABORER"						
OILER (OTHER THAN TRUCK CRANES, GRADALLS) OPERATING ENGINEERS LOCAL 4	06/01/2020	\$23.13	\$13.00	\$15.70	\$0.00	\$51.83
	12/01/2020	\$23.70	\$13.00	\$15.70	\$0.00	\$52.40
	06/01/2021	\$24.25	\$13.00	\$15.70	\$0.00	\$52.95
	12/01/2021	\$24.83	\$13.00	\$15.70	\$0.00	\$53.53
For apprentice rates see "Apprentice- OPERATING ENGINEERS"						
OILER (TRUCK CRANES, GRADALLS) OPERATING ENGINEERS LOCAL 4	06/01/2020	\$27.79	\$13.00	\$15.70	\$0.00	\$56.49
	12/01/2020	\$28.47	\$13.00	\$15.70	\$0.00	\$57.17
	06/01/2021	\$29.11	\$13.00	\$15.70	\$0.00	\$57.81
	12/01/2021	\$29.79	\$13.00	\$15.70	\$0.00	\$58.49
For apprentice rates see "Apprentice- OPERATING ENGINEERS"						
OTHER POWER DRIVEN EQUIPMENT - CLASS II OPERATING ENGINEERS LOCAL 4	06/01/2020	\$48.81	\$13.00	\$15.70	\$0.00	\$77.51
	12/01/2020	\$49.95	\$13.00	\$15.70	\$0.00	\$78.65
	06/01/2021	\$51.04	\$13.00	\$15.70	\$0.00	\$79.74
	12/01/2021	\$52.18	\$13.00	\$15.70	\$0.00	\$80.88
For apprentice rates see "Apprentice- OPERATING ENGINEERS"						
PAINTER (BRIDGES/TANKS) PAINTERS LOCAL 35 - ZONE 2	01/01/2020	\$50.96	\$8.20	\$22.10	\$0.00	\$81.26
	07/01/2020	\$51.51	\$8.25	\$22.40	\$0.00	\$82.16
	01/01/2021	\$52.06	\$8.25	\$22.75	\$0.00	\$83.06

Classification

Effective Date Base Wage Health Pension Supplemental Unemployment Total Rate

Apprentice - PAINTER Local 35 - BRIDGES/TANKS

Effective Date - 01/01/2020

Step	percent	Apprentice Base Wage	Health	Pension	Supplemental Unemployment	Total Rate
1	50	\$25.48	\$8.20	\$0.00	\$0.00	\$33.68
2	55	\$28.03	\$8.20	\$5.94	\$0.00	\$42.17
3	60	\$30.58	\$8.20	\$6.48	\$0.00	\$45.26
4	65	\$33.12	\$8.20	\$7.02	\$0.00	\$48.34
5	70	\$35.67	\$8.20	\$18.86	\$0.00	\$62.73
6	75	\$38.22	\$8.20	\$19.40	\$0.00	\$65.82
7	80	\$40.77	\$8.20	\$19.94	\$0.00	\$68.91
8	90	\$45.86	\$8.20	\$21.02	\$0.00	\$75.08

Effective Date - 07/01/2020

Step	percent	Apprentice Base Wage	Health	Pension	Supplemental Unemployment	Total Rate
1	50	\$25.76	\$8.25	\$0.00	\$0.00	\$34.01
2	55	\$28.33	\$8.25	\$6.05	\$0.00	\$42.63
3	60	\$30.91	\$8.25	\$6.60	\$0.00	\$45.76
4	65	\$33.48	\$8.25	\$7.15	\$0.00	\$48.88
5	70	\$36.06	\$8.25	\$19.10	\$0.00	\$63.41
6	75	\$38.63	\$8.25	\$19.65	\$0.00	\$66.53
7	80	\$41.21	\$8.25	\$20.20	\$0.00	\$69.66
8	90	\$46.36	\$8.25	\$21.30	\$0.00	\$75.91

Notes:

Steps are 750 hrs.

Apprentice to Journeyworker Ratio:1:1

PAINTER (SPRAY OR SANDBLAST, NEW) *	01/01/2020	\$41.86	\$8.20	\$22.10	\$0.00	\$72.16
* If 30% or more of surfaces to be painted are new construction, NEW paint rate shall be used. PAINTERS LOCAL 35 - ZONE 2	07/01/2020	\$41.21	\$8.25	\$22.40	\$0.00	\$71.86
	01/01/2021	\$42.96	\$8.25	\$22.75	\$0.00	\$73.96

Issue Date: 06/10/2020

Wage Request Number: 20200610-060

Page 21 of 36

Classification

Effective Date Base Wage Health Pension Supplemental Unemployment Total Rate

Apprentice - PAINTER Local 35 Zone 2 - Spray/Sandblast - New

Effective Date - 01/01/2020

Step	percent	Apprentice Base Wage	Health	Pension	Supplemental Unemployment	Total Rate
1	50	\$20.93	\$8.20	\$0.00	\$0.00	\$29.13
2	55	\$23.02	\$8.20	\$5.94	\$0.00	\$37.16
3	60	\$25.12	\$8.20	\$6.48	\$0.00	\$39.80
4	65	\$27.21	\$8.20	\$7.02	\$0.00	\$42.43
5	70	\$29.30	\$8.20	\$18.86	\$0.00	\$56.36
6	75	\$31.40	\$8.20	\$19.40	\$0.00	\$59.00
7	80	\$33.49	\$8.20	\$19.94	\$0.00	\$61.63
8	90	\$37.67	\$8.20	\$21.02	\$0.00	\$66.89

Effective Date - 07/01/2020

Step	percent	Apprentice Base Wage	Health	Pension	Supplemental Unemployment	Total Rate
1	50	\$20.61	\$8.25	\$0.00	\$0.00	\$28.86
2	55	\$22.67	\$8.25	\$6.05	\$0.00	\$36.97
3	60	\$24.73	\$8.25	\$6.60	\$0.00	\$39.58
4	65	\$26.79	\$8.25	\$7.15	\$0.00	\$42.19
5	70	\$28.85	\$8.25	\$19.10	\$0.00	\$56.20
6	75	\$30.91	\$8.25	\$19.65	\$0.00	\$58.81
7	80	\$32.97	\$8.25	\$20.20	\$0.00	\$61.42
8	90	\$37.09	\$8.25	\$21.30	\$0.00	\$66.64

Notes:

Steps are 750 hrs.

Apprentice to Journeyworker Ratio:1:1

PAINTER (SPRAY OR SANDBLAST, REPAINT)	01/01/2020	\$39.92	\$8.20	\$22.10	\$0.00	\$70.22
PAINTERS LOCAL 35 - ZONE 2	07/01/2020	\$40.47	\$8.25	\$22.40	\$0.00	\$71.12
	01/01/2021	\$41.02	\$8.25	\$22.75	\$0.00	\$72.02

Classification

Effective Date Base Wage Health Pension Supplemental Unemployment Total Rate

Apprentice - PAINTER Local 35 Zone 2 - Spray/Sandblast - Repaint

Effective Date - 01/01/2020

Step	percent	Apprentice Base Wage	Health	Pension	Supplemental Unemployment	Total Rate
1	50	\$19.96	\$8.20	\$0.00	\$0.00	\$28.16
2	55	\$21.96	\$8.20	\$5.94	\$0.00	\$36.10
3	60	\$23.95	\$8.20	\$6.48	\$0.00	\$38.63
4	65	\$25.95	\$8.20	\$7.02	\$0.00	\$41.17
5	70	\$27.94	\$8.20	\$18.86	\$0.00	\$55.00
6	75	\$29.94	\$8.20	\$19.40	\$0.00	\$57.54
7	80	\$31.94	\$8.20	\$19.94	\$0.00	\$60.08
8	90	\$35.93	\$8.20	\$21.02	\$0.00	\$65.15

Effective Date - 07/01/2020

Step	percent	Apprentice Base Wage	Health	Pension	Supplemental Unemployment	Total Rate
1	50	\$20.24	\$8.25	\$0.00	\$0.00	\$28.49
2	55	\$22.26	\$8.25	\$6.05	\$0.00	\$36.56
3	60	\$24.28	\$8.25	\$6.60	\$0.00	\$39.13
4	65	\$26.31	\$8.25	\$7.15	\$0.00	\$41.71
5	70	\$28.33	\$8.25	\$19.10	\$0.00	\$55.68
6	75	\$30.35	\$8.25	\$19.65	\$0.00	\$58.25
7	80	\$32.38	\$8.25	\$20.20	\$0.00	\$60.83
8	90	\$36.42	\$8.25	\$21.30	\$0.00	\$65.97

Notes:

Steps are 750 hrs.

Apprentice to Journeyworker Ratio:1:1

PAINTER (TRAFFIC MARKINGS) LABORERS - ZONE 1	06/01/2020	\$39.15	\$8.60	\$17.09	\$0.00	\$64.84
	12/01/2020	\$40.13	\$8.60	\$17.09	\$0.00	\$65.82
	06/01/2021	\$41.15	\$8.60	\$17.09	\$0.00	\$66.84
	12/01/2021	\$42.16	\$8.60	\$17.09	\$0.00	\$67.85
For Apprentice rates see "Apprentice- LABORER"						
PAINTER / TAPER (BRUSH, NEW) * * If 30% or more of surfaces to be painted are new construction, NEW paint rate shall be used. PAINTERS LOCAL 35 - ZONE 2	01/01/2020	\$40.46	\$8.20	\$22.10	\$0.00	\$70.76
	07/01/2020	\$41.01	\$8.25	\$22.40	\$0.00	\$71.66
	01/01/2021	\$41.56	\$8.25	\$22.75	\$0.00	\$72.56

Classification

Effective Date Base Wage Health Pension Supplemental Unemployment Total Rate

Apprentice - PAINTER - Local 35 Zone 2 - BRUSH NEW

Effective Date - 01/01/2020

Step	percent	Apprentice Base Wage	Health	Pension	Supplemental Unemployment	Total Rate
1	50	\$20.23	\$8.20	\$0.00	\$0.00	\$28.43
2	55	\$22.25	\$8.20	\$5.94	\$0.00	\$36.39
3	60	\$24.28	\$8.20	\$6.48	\$0.00	\$38.96
4	65	\$26.30	\$8.20	\$7.02	\$0.00	\$41.52
5	70	\$28.32	\$8.20	\$18.86	\$0.00	\$55.38
6	75	\$30.35	\$8.20	\$19.40	\$0.00	\$57.95
7	80	\$32.37	\$8.20	\$19.94	\$0.00	\$60.51
8	90	\$36.41	\$8.20	\$21.02	\$0.00	\$65.63

Effective Date - 07/01/2020

Step	percent	Apprentice Base Wage	Health	Pension	Supplemental Unemployment	Total Rate
1	50	\$20.51	\$8.25	\$0.00	\$0.00	\$28.76
2	55	\$22.56	\$8.25	\$6.05	\$0.00	\$36.86
3	60	\$24.61	\$8.25	\$6.60	\$0.00	\$39.46
4	65	\$26.66	\$8.25	\$7.15	\$0.00	\$42.06
5	70	\$28.71	\$8.25	\$19.10	\$0.00	\$56.06
6	75	\$30.76	\$8.25	\$19.65	\$0.00	\$58.66
7	80	\$32.81	\$8.25	\$20.20	\$0.00	\$61.26
8	90	\$36.91	\$8.25	\$21.30	\$0.00	\$66.46

Notes:

Steps are 750 hrs.

Apprentice to Journeyworker Ratio:1:1

Painter / Taper (BRUSH, REPAINT)	01/01/2020	\$38.52	\$8.20	\$22.10	\$0.00	\$68.82
PAINTERS LOCAL 35 - ZONE 2	07/01/2020	\$39.07	\$8.25	\$22.40	\$0.00	\$69.72
	01/01/2021	\$39.62	\$8.25	\$22.75	\$0.00	\$70.62

Classification

Effective Date Base Wage Health Pension Supplemental Unemployment Total Rate

Apprentice - PAINTER Local 35 Zone 2 - BRUSH REPAINT

Effective Date - 01/01/2020

Step	percent	Apprentice Base Wage	Health	Pension	Supplemental Unemployment	Total Rate
1	50	\$19.26	\$8.20	\$0.00	\$0.00	\$27.46
2	55	\$21.19	\$8.20	\$5.94	\$0.00	\$35.33
3	60	\$23.11	\$8.20	\$6.48	\$0.00	\$37.79
4	65	\$25.04	\$8.20	\$7.02	\$0.00	\$40.26
5	70	\$26.96	\$8.20	\$18.86	\$0.00	\$54.02
6	75	\$28.89	\$8.20	\$19.40	\$0.00	\$56.49
7	80	\$30.82	\$8.20	\$19.94	\$0.00	\$58.96
8	90	\$34.67	\$8.20	\$21.02	\$0.00	\$63.89

Effective Date - 07/01/2020

Step	percent	Apprentice Base Wage	Health	Pension	Supplemental Unemployment	Total Rate
1	50	\$19.54	\$8.25	\$0.00	\$0.00	\$27.79
2	55	\$21.49	\$8.25	\$6.05	\$0.00	\$35.79
3	60	\$23.44	\$8.25	\$6.60	\$0.00	\$38.29
4	65	\$25.40	\$8.25	\$7.15	\$0.00	\$40.80
5	70	\$27.35	\$8.25	\$19.10	\$0.00	\$54.70
6	75	\$29.30	\$8.25	\$19.65	\$0.00	\$57.20
7	80	\$31.26	\$8.25	\$20.20	\$0.00	\$59.71
8	90	\$35.16	\$8.25	\$21.30	\$0.00	\$64.71

Notes:

Steps are 750 hrs.

Apprentice to Journeyworker Ratio:1:1

PANEL & PICKUP TRUCKS DRIVER TEAMSTERS JOINT COUNCIL NO. 10 ZONE A	06/01/2020	\$36.08	\$12.41	\$13.72	\$0.00	\$62.21
	08/01/2020	\$36.08	\$12.91	\$13.72	\$0.00	\$62.71
	12/01/2020	\$36.08	\$12.91	\$14.82	\$0.00	\$63.81
	06/01/2021	\$36.88	\$12.91	\$14.82	\$0.00	\$64.61
	08/01/2021	\$36.88	\$13.41	\$14.82	\$0.00	\$65.11
	12/01/2021	\$36.88	\$13.41	\$16.01	\$0.00	\$66.30
PIER AND DOCK CONSTRUCTOR (UNDERPINNING AND DECK) PILE DRIVER LOCAL 56 (ZONE 1) For apprentice rates see "Apprentice- PILE DRIVER"	08/01/2019	\$48.94	\$9.90	\$21.15	\$0.00	\$79.99
PILE DRIVER PILE DRIVER LOCAL 56 (ZONE 1)	08/01/2019	\$48.94	\$9.90	\$21.15	\$0.00	\$79.99

Classification

Effective Date Base Wage Health Pension Supplemental Unemployment Total Rate

Apprentice - PILE DRIVER - Local 56 Zone 1

Effective Date - 08/01/2019

Step	percent	Apprentice Base Wage	Health	Pension	Supplemental Unemployment	Total Rate
1	50	\$24.47	\$9.90	\$21.15	\$0.00	\$55.52
2	60	\$29.36	\$9.90	\$21.15	\$0.00	\$60.41
3	70	\$34.26	\$9.90	\$21.15	\$0.00	\$65.31
4	75	\$36.71	\$9.90	\$21.15	\$0.00	\$67.76
5	80	\$39.15	\$9.90	\$21.15	\$0.00	\$70.20
6	80	\$39.15	\$9.90	\$21.15	\$0.00	\$70.20
7	90	\$44.05	\$9.90	\$21.15	\$0.00	\$75.10
8	90	\$44.05	\$9.90	\$21.15	\$0.00	\$75.10

Notes:

Apprentice to Journeyworker Ratio:1:5

PIPEFITTER & STEAMFITTER	03/01/2020	\$56.19	\$10.95	\$19.74	\$0.00	\$86.88
PIPEFITTERS LOCAL 537	09/01/2020	\$57.69	\$10.95	\$19.74	\$0.00	\$88.38
	03/01/2021	\$59.19	\$10.95	\$19.74	\$0.00	\$89.88

Apprentice - PIPEFITTER - Local 537

Effective Date - 03/01/2020

Step	percent	Apprentice Base Wage	Health	Pension	Supplemental Unemployment	Total Rate
1	40	\$22.48	\$10.95	\$8.00	\$0.00	\$41.43
2	45	\$25.29	\$10.95	\$19.74	\$0.00	\$55.98
3	60	\$33.71	\$10.95	\$19.74	\$0.00	\$64.40
4	70	\$39.33	\$10.95	\$19.74	\$0.00	\$70.02
5	80	\$44.95	\$10.95	\$19.74	\$0.00	\$75.64

Effective Date - 09/01/2020

Step	percent	Apprentice Base Wage	Health	Pension	Supplemental Unemployment	Total Rate
1	40	\$23.08	\$10.95	\$8.00	\$0.00	\$42.03
2	45	\$25.96	\$10.95	\$19.74	\$0.00	\$56.65
3	60	\$34.61	\$10.95	\$19.74	\$0.00	\$65.30
4	70	\$40.38	\$10.95	\$19.74	\$0.00	\$71.07
5	80	\$46.15	\$10.95	\$19.74	\$0.00	\$76.84

Notes:

** 1:3; 3:15; 1:10 thereafter / Steps are 1 yr.
Refrig/AC Mechanic **1:1;1:2;2:4;3:6;4:8;5:10;6:12;7:14;8:17;9:20;10:23(Max)

Apprentice to Journeyworker Ratio:**

Classification	Effective Date	Base Wage	Health	Pension	Supplemental Unemployment	Total Rate
PIPELAYER <i>LABORERS - ZONE 1</i>	06/01/2020	\$39.40	\$8.60	\$17.09	\$0.00	\$65.09
	12/01/2020	\$40.38	\$8.60	\$17.09	\$0.00	\$66.07
	06/01/2021	\$41.40	\$8.60	\$17.09	\$0.00	\$67.09
	12/01/2021	\$42.41	\$8.60	\$17.09	\$0.00	\$68.10
For apprentice rates see "Apprentice- LABORER"						
PLUMBERS & GASFITTERS <i>PLUMBERS & GASFITTERS LOCAL 12</i>	03/01/2020	\$58.69	\$12.07	\$17.26	\$0.00	\$88.02
	09/01/2020	\$60.19	\$12.07	\$17.26	\$0.00	\$89.52
	03/01/2021	\$61.69	\$12.07	\$17.26	\$0.00	\$91.02

Apprentice - PLUMBER/GASFITTER - Local 12

Effective Date - 03/01/2020

Step	percent	Apprentice Base Wage	Health	Pension	Supplemental Unemployment	Total Rate
1	35	\$20.54	\$12.07	\$6.24	\$0.00	\$38.85
2	40	\$23.48	\$12.07	\$7.08	\$0.00	\$42.63
3	55	\$32.28	\$12.07	\$9.63	\$0.00	\$53.98
4	65	\$38.15	\$12.07	\$11.33	\$0.00	\$61.55
5	75	\$44.02	\$12.07	\$13.03	\$0.00	\$69.12

Effective Date - 09/01/2020

Step	percent	Apprentice Base Wage	Health	Pension	Supplemental Unemployment	Total Rate
1	35	\$21.07	\$12.07	\$6.24	\$0.00	\$39.38
2	40	\$24.08	\$12.07	\$7.08	\$0.00	\$43.23
3	55	\$33.10	\$12.07	\$9.63	\$0.00	\$54.80
4	65	\$39.12	\$12.07	\$11.33	\$0.00	\$62.52
5	75	\$45.14	\$12.07	\$13.03	\$0.00	\$70.24

Notes:

** 1:2; 2:6; 3:10; 4:14; 5:19/Steps are 1 yr
Step4 with lic\$65.32, Step5 with lic\$72.89

Apprentice to Journeyworker Ratio:**

PNEUMATIC CONTROLS (TEMP.) <i>PIPEFITTERS LOCAL 537</i>	03/01/2020	\$56.19	\$10.95	\$19.74	\$0.00	\$86.88
	09/01/2020	\$57.69	\$10.95	\$19.74	\$0.00	\$88.38
	03/01/2021	\$59.17	\$10.95	\$19.74	\$0.00	\$89.86

For apprentice rates see "Apprentice- PIPEFITTER" or "PLUMBER/PIPEFITTER"

PNEUMATIC DRILL/TOOL OPERATOR <i>LABORERS - ZONE 1</i>	06/01/2020	\$39.40	\$8.60	\$17.09	\$0.00	\$65.09
	12/01/2020	\$40.38	\$8.60	\$17.09	\$0.00	\$66.07
	06/01/2021	\$41.40	\$8.60	\$17.09	\$0.00	\$67.09
	12/01/2021	\$42.41	\$8.60	\$17.09	\$0.00	\$68.10

For apprentice rates see "Apprentice- LABORER"

POWDERMAN & BLASTER <i>LABORERS - ZONE 1</i>	06/01/2020	\$40.15	\$8.60	\$17.09	\$0.00	\$65.84
	12/01/2020	\$41.13	\$8.60	\$17.09	\$0.00	\$66.82
	06/01/2021	\$42.15	\$8.60	\$17.09	\$0.00	\$67.84
	12/01/2021	\$43.16	\$8.60	\$17.09	\$0.00	\$68.85

For apprentice rates see "Apprentice- LABORER"

Issue Date: 06/10/2020

Wage Request Number: 20200610-060

Page 27 of 36

Classification	Effective Date	Base Wage	Health	Pension	Supplemental Unemployment	Total Rate
POWER SHOVEL/DERRICK/TRENCHING MACHINE <i>OPERATING ENGINEERS LOCAL 4</i>	06/01/2020	\$49.33	\$13.00	\$15.70	\$0.00	\$78.03
	12/01/2020	\$50.48	\$13.00	\$15.70	\$0.00	\$79.18
	06/01/2021	\$51.58	\$13.00	\$15.70	\$0.00	\$80.28
	12/01/2021	\$52.73	\$13.00	\$15.70	\$0.00	\$81.43
For apprentice rates see "Apprentice- OPERATING ENGINEERS"						
PUMP OPERATOR (CONCRETE) <i>OPERATING ENGINEERS LOCAL 4</i>	06/01/2020	\$49.33	\$13.00	\$15.70	\$0.00	\$78.03
	12/01/2020	\$50.48	\$13.00	\$15.70	\$0.00	\$79.18
	06/01/2021	\$51.58	\$13.00	\$15.70	\$0.00	\$80.28
	12/01/2021	\$52.73	\$13.00	\$15.70	\$0.00	\$81.43
For apprentice rates see "Apprentice- OPERATING ENGINEERS"						
PUMP OPERATOR (DEWATERING, OTHER) <i>OPERATING ENGINEERS LOCAL 4</i>	06/01/2020	\$32.72	\$13.00	\$15.70	\$0.00	\$61.42
	12/01/2020	\$33.50	\$13.00	\$15.70	\$0.00	\$62.20
	06/01/2021	\$34.25	\$13.00	\$15.70	\$0.00	\$62.95
	12/01/2021	\$35.04	\$13.00	\$15.70	\$0.00	\$63.74
For apprentice rates see "Apprentice- OPERATING ENGINEERS"						
READY-MIX CONCRETE DRIVER <i>TEAMSTERS 170 - Rosenfeld (Walpole)</i>	01/01/2020	\$23.50	\$11.01	\$8.00	\$0.00	\$42.51
	01/01/2021	\$23.50	\$11.51	\$8.00	\$0.00	\$43.01
RECLAIMERS <i>OPERATING ENGINEERS LOCAL 4</i>	06/01/2020	\$48.81	\$13.00	\$15.70	\$0.00	\$77.51
	12/01/2020	\$49.95	\$13.00	\$15.70	\$0.00	\$78.65
	06/01/2021	\$51.04	\$13.00	\$15.70	\$0.00	\$79.74
	12/01/2021	\$52.18	\$13.00	\$15.70	\$0.00	\$80.88
For apprentice rates see "Apprentice- OPERATING ENGINEERS"						
RIDE-ON MOTORIZED BUGGY OPERATOR <i>LABORERS - ZONE 1</i>	06/01/2020	\$39.40	\$8.60	\$17.09	\$0.00	\$65.09
	12/01/2020	\$40.38	\$8.60	\$17.09	\$0.00	\$66.07
	06/01/2021	\$41.40	\$8.60	\$17.09	\$0.00	\$67.09
	12/01/2021	\$42.41	\$8.60	\$17.09	\$0.00	\$68.10
For apprentice rates see "Apprentice- LABORER"						
ROLLER/SPREADER/MULCHING MACHINE <i>OPERATING ENGINEERS LOCAL 4</i>	06/01/2020	\$48.81	\$13.00	\$15.70	\$0.00	\$77.51
	12/01/2020	\$49.95	\$13.00	\$15.70	\$0.00	\$78.65
	06/01/2021	\$51.04	\$13.00	\$15.70	\$0.00	\$79.74
	12/01/2021	\$52.18	\$13.00	\$15.70	\$0.00	\$80.88
For apprentice rates see "Apprentice- OPERATING ENGINEERS"						
ROOFER (Inc.Roofing Waterproofing &Roofing Damproofg) <i>ROOFERS LOCAL 33</i>	03/01/2020	\$45.67	\$11.50	\$15.90	\$0.00	\$73.07
	08/01/2020	\$47.10	\$11.50	\$15.90	\$0.00	\$74.50
	02/01/2021	\$48.53	\$11.50	\$15.90	\$0.00	\$75.93
	08/01/2021	\$49.96	\$11.50	\$15.90	\$0.00	\$77.36
	02/01/2022	\$51.39	\$11.50	\$15.90	\$0.00	\$78.79

Classification

Effective Date Base Wage Health Pension Supplemental Unemployment Total Rate

Apprentice - ROOFER - Local 33

Effective Date - 03/01/2020

Step	percent	Apprentice Base Wage	Health	Pension	Supplemental Unemployment	Total Rate
1	50	\$22.84	\$11.50	\$3.69	\$0.00	\$38.03
2	60	\$27.40	\$11.50	\$15.90	\$0.00	\$54.80
3	65	\$29.69	\$11.50	\$15.90	\$0.00	\$57.09
4	75	\$34.25	\$11.50	\$15.90	\$0.00	\$61.65
5	85	\$38.82	\$11.50	\$15.90	\$0.00	\$66.22

Effective Date - 08/01/2020

Step	percent	Apprentice Base Wage	Health	Pension	Supplemental Unemployment	Total Rate
1	50	\$23.55	\$11.50	\$3.69	\$0.00	\$38.74
2	60	\$28.26	\$11.50	\$15.90	\$0.00	\$55.66
3	65	\$30.62	\$11.50	\$15.90	\$0.00	\$58.02
4	75	\$35.33	\$11.50	\$15.90	\$0.00	\$62.73
5	85	\$40.04	\$11.50	\$15.90	\$0.00	\$67.44

Notes: ** 1:5, 2:6-10, the 1:10; Reroofing: 1:4, then 1:1
 Step 1 is 2000 hrs.; Steps 2-5 are 1000 hrs.
 (Hot Pitch Mechanics' receive \$1.00 hr. above ROOFER)

Apprentice to Journeyworker Ratio:**

Classification	Effective Date	Base Wage	Health	Pension	Supplemental Unemployment	Total Rate
ROOFER SLATE / TILE / PRECAST CONCRETE ROOFERS LOCAL 33	03/01/2020	\$45.92	\$11.50	\$15.90	\$0.00	\$73.32
	08/01/2020	\$47.35	\$11.50	\$15.90	\$0.00	\$74.75
	02/01/2021	\$48.78	\$11.50	\$15.90	\$0.00	\$76.18
	08/01/2021	\$50.21	\$11.50	\$15.90	\$0.00	\$77.61
	02/01/2022	\$51.64	\$11.50	\$15.90	\$0.00	\$79.04

For apprentice rates see "Apprentice- ROOFER"

Classification	Effective Date	Base Wage	Health	Pension	Supplemental Unemployment	Total Rate
SHEETMETAL WORKER SHEETMETAL WORKERS LOCAL 17 - A	02/01/2020	\$49.36	\$13.35	\$24.12	\$2.61	\$89.44
	08/01/2020	\$50.96	\$13.35	\$24.12	\$2.66	\$91.09
	02/01/2021	\$52.61	\$13.35	\$24.12	\$2.71	\$92.79
	08/01/2021	\$54.36	\$13.35	\$24.12	\$2.76	\$94.59
	02/01/2022	\$56.11	\$13.35	\$24.12	\$2.81	\$96.39

Classification

Effective Date Base Wage Health Pension Supplemental Unemployment Total Rate

Apprentice - SHEET METAL WORKER - Local 17-A

Effective Date - 02/01/2020

Step	percent	Apprentice Base Wage	Health	Pension	Supplemental Unemployment	Total Rate
1	42	\$20.73	\$13.35	\$5.89	\$0.00	\$39.97
2	42	\$20.73	\$13.35	\$5.89	\$0.00	\$39.97
3	47	\$23.20	\$13.35	\$11.13	\$1.43	\$49.11
4	47	\$23.20	\$13.35	\$11.13	\$1.43	\$49.11
5	52	\$25.67	\$13.35	\$12.08	\$1.53	\$52.63
6	52	\$25.67	\$13.35	\$12.33	\$1.54	\$52.89
7	60	\$29.62	\$13.35	\$13.70	\$1.70	\$58.37
8	65	\$32.08	\$13.35	\$15.15	\$1.80	\$62.38
9	75	\$37.02	\$13.35	\$16.56	\$2.01	\$68.94
10	85	\$41.96	\$13.35	\$17.96	\$2.20	\$75.47

Effective Date - 08/01/2020

Step	percent	Apprentice Base Wage	Health	Pension	Supplemental Unemployment	Total Rate
1	42	\$21.40	\$13.35	\$5.89	\$0.00	\$40.64
2	42	\$21.40	\$13.35	\$5.89	\$0.00	\$40.64
3	47	\$23.95	\$13.35	\$11.13	\$1.45	\$49.88
4	47	\$23.95	\$13.35	\$11.13	\$1.45	\$49.88
5	52	\$26.50	\$13.35	\$12.08	\$1.56	\$53.49
6	52	\$26.50	\$13.35	\$12.33	\$1.57	\$53.75
7	60	\$30.58	\$13.35	\$13.70	\$1.73	\$59.36
8	65	\$33.12	\$13.35	\$15.15	\$1.85	\$63.47
9	75	\$38.22	\$13.35	\$16.56	\$2.04	\$70.17
10	85	\$43.32	\$13.35	\$17.96	\$2.24	\$76.87

Notes:

Steps are 6 mos.

Apprentice to Journeyworker Ratio:1:4

SPECIALIZED EARTH MOVING EQUIP < 35 TONS TEAMSTERS JOINT COUNCIL NO. 10 ZONE A	06/01/2020	\$36.54	\$12.41	\$13.72	\$0.00	\$62.67
	08/01/2020	\$36.54	\$12.91	\$13.72	\$0.00	\$63.17
	12/01/2020	\$36.54	\$12.91	\$14.82	\$0.00	\$64.27
	06/01/2021	\$37.34	\$12.91	\$14.82	\$0.00	\$65.07
	08/01/2021	\$37.34	\$13.41	\$14.82	\$0.00	\$65.57
	12/01/2021	\$37.34	\$13.41	\$16.01	\$0.00	\$66.76
SPECIALIZED EARTH MOVING EQUIP > 35 TONS TEAMSTERS JOINT COUNCIL NO. 10 ZONE A	06/01/2020	\$36.83	\$12.41	\$13.72	\$0.00	\$62.96
	08/01/2020	\$36.83	\$12.91	\$13.72	\$0.00	\$63.46
	12/01/2020	\$36.83	\$12.91	\$14.82	\$0.00	\$64.56
	06/01/2021	\$37.63	\$12.91	\$14.82	\$0.00	\$65.36
	08/01/2021	\$37.63	\$13.41	\$14.82	\$0.00	\$65.86
	12/01/2021	\$37.63	\$13.41	\$16.01	\$0.00	\$67.05

Issue Date: 06/10/2020

Wage Request Number: 20200610-060

Page 30 of 36

Classification	Effective Date	Base Wage	Health	Pension	Supplemental Unemployment	Total Rate
SPRINKLER FITTER <i>SPRINKLER FITTERS LOCAL 550 - (Section A) Zone 1</i>	03/01/2020	\$60.82	\$9.68	\$20.55	\$0.00	\$91.05
	10/01/2020	\$62.32	\$9.68	\$20.55	\$0.00	\$92.55
	03/01/2021	\$63.82	\$9.68	\$20.55	\$0.00	\$94.05

Apprentice - SPRINKLER FITTER - Local 550 (Section A) Zone 1

Effective Date - 03/01/2020

Step	percent	Apprentice Base Wage	Health	Pension	Supplemental Unemployment	Total Rate
1	35	\$21.29	\$9.68	\$11.61	\$0.00	\$42.58
2	40	\$24.33	\$9.68	\$12.30	\$0.00	\$46.31
3	45	\$27.37	\$9.68	\$12.99	\$0.00	\$50.04
4	50	\$30.41	\$9.68	\$13.73	\$0.00	\$53.82
5	55	\$33.45	\$9.68	\$14.36	\$0.00	\$57.49
6	60	\$36.49	\$9.68	\$15.05	\$0.00	\$61.22
7	65	\$39.53	\$9.68	\$15.74	\$0.00	\$64.95
8	70	\$42.57	\$9.68	\$16.43	\$0.00	\$68.68
9	75	\$45.62	\$9.68	\$17.11	\$0.00	\$72.41
10	80	\$48.66	\$9.68	\$17.80	\$0.00	\$76.14

Effective Date - 10/01/2020

Step	percent	Apprentice Base Wage	Health	Pension	Supplemental Unemployment	Total Rate
1	35	\$21.81	\$9.68	\$11.61	\$0.00	\$43.10
2	40	\$24.93	\$9.68	\$12.30	\$0.00	\$46.91
3	45	\$28.04	\$9.68	\$12.99	\$0.00	\$50.71
4	50	\$31.16	\$9.68	\$13.73	\$0.00	\$54.57
5	55	\$34.28	\$9.68	\$14.36	\$0.00	\$58.32
6	60	\$37.39	\$9.68	\$15.05	\$0.00	\$62.12
7	65	\$40.51	\$9.68	\$15.74	\$0.00	\$65.93
8	70	\$43.62	\$9.68	\$16.43	\$0.00	\$69.73
9	75	\$46.74	\$9.68	\$17.11	\$0.00	\$73.53
10	80	\$49.86	\$9.68	\$17.80	\$0.00	\$77.34

Notes: Apprentice entered prior 9/30/10;
40/45/50/55/60/65/70/75/80/85
Steps are 850 hours

Apprentice to Journeyworker Ratio:1:3

STEAM BOILER OPERATOR <i>OPERATING ENGINEERS LOCAL 4</i>	06/01/2020	\$48.81	\$13.00	\$15.70	\$0.00	\$77.51
	12/01/2020	\$49.95	\$13.00	\$15.70	\$0.00	\$78.65
	06/01/2021	\$51.04	\$13.00	\$15.70	\$0.00	\$79.74
	12/01/2021	\$52.18	\$13.00	\$15.70	\$0.00	\$80.88

For apprentice rates see "Apprentice- OPERATING ENGINEERS"

TAMPERS, SELF-PROPELLED OR TRACTOR DRAWN <i>OPERATING ENGINEERS LOCAL 4</i>	06/01/2020	\$48.81	\$13.00	\$15.70	\$0.00	\$77.51
	12/01/2020	\$49.95	\$13.00	\$15.70	\$0.00	\$78.65
	06/01/2021	\$51.04	\$13.00	\$15.70	\$0.00	\$79.74
	12/01/2021	\$52.18	\$13.00	\$15.70	\$0.00	\$80.88

For apprentice rates see "Apprentice- OPERATING ENGINEERS"

Issue Date: 06/10/2020

Wage Request Number: 20200610-060

Page 31 of 36

Classification	Effective Date	Base Wage	Health	Pension	Supplemental Unemployment	Total Rate
TELECOMMUNICATION TECHNICIAN <i>ELECTRICIANS LOCAL 103</i>	03/01/2020	\$40.13	\$13.00	\$17.12	\$0.00	\$70.25
	09/01/2020	\$41.20	\$13.00	\$17.16	\$0.00	\$71.36
	03/01/2021	\$42.66	\$13.00	\$17.27	\$0.00	\$72.93
	09/01/2021	\$44.32	\$13.00	\$17.38	\$0.00	\$74.70
	03/01/2022	\$45.83	\$13.00	\$17.49	\$0.00	\$76.32
	09/01/2022	\$47.55	\$13.00	\$17.62	\$0.00	\$78.17
	03/01/2023	\$49.11	\$13.00	\$17.73	\$0.00	\$79.84

Apprentice - TELECOMMUNICATION TECHNICIAN - Local 103

Effective Date - 03/01/2020

Step	percent	Apprentice Base Wage	Health	Pension	Supplemental Unemployment	Total Rate
1	45	\$18.06	\$13.00	\$0.54	\$0.00	\$31.60
2	45	\$18.06	\$13.00	\$0.54	\$0.00	\$31.60
3	50	\$20.07	\$13.00	\$14.00	\$0.00	\$47.07
4	50	\$20.07	\$13.00	\$14.00	\$0.00	\$47.07
5	55	\$22.07	\$13.00	\$14.31	\$0.00	\$49.38
6	60	\$24.08	\$13.00	\$14.62	\$0.00	\$51.70
7	65	\$26.08	\$13.00	\$14.94	\$0.00	\$54.02
8	70	\$28.09	\$13.00	\$15.25	\$0.00	\$56.34
9	75	\$30.10	\$13.00	\$15.56	\$0.00	\$58.66
10	80	\$32.10	\$13.00	\$15.87	\$0.00	\$60.97

Effective Date - 09/01/2020

Step	percent	Apprentice Base Wage	Health	Pension	Supplemental Unemployment	Total Rate
1	45	\$18.54	\$13.00	\$0.57	\$0.00	\$32.11
2	45	\$18.54	\$13.00	\$0.57	\$0.00	\$32.11
3	50	\$20.60	\$13.00	\$14.02	\$0.00	\$47.62
4	50	\$20.60	\$13.00	\$14.02	\$0.00	\$47.62
5	55	\$22.66	\$13.00	\$14.33	\$0.00	\$49.99
6	60	\$24.72	\$13.00	\$14.64	\$0.00	\$52.36
7	65	\$26.78	\$13.00	\$14.96	\$0.00	\$54.74
8	70	\$28.84	\$13.00	\$15.28	\$0.00	\$57.12
9	75	\$30.90	\$13.00	\$15.59	\$0.00	\$59.49
10	80	\$32.96	\$13.00	\$15.90	\$0.00	\$61.86

Notes:

Apprentice to Journeyworker Ratio:1:1

TERRAZZO FINISHERS <i>BRICKLAYERS LOCAL 3 - MARBLE & TILE</i>	02/01/2020	\$53.34	\$10.75	\$21.94	\$0.00	\$86.03
	08/01/2020	\$54.69	\$10.75	\$22.09	\$0.00	\$87.53
	02/01/2021	\$55.33	\$10.75	\$22.09	\$0.00	\$88.17
	08/01/2021	\$56.73	\$10.75	\$22.25	\$0.00	\$89.73
	02/01/2022	\$57.32	\$10.75	\$22.25	\$0.00	\$90.32

Issue Date: 06/10/2020

Wage Request Number: 20200610-060

Page 32 of 36

Classification

Effective Date Base Wage Health Pension Supplemental Unemployment Total Rate

Apprentice - TERRAZZO FINISHER - Local 3 Marble & Tile

Effective Date - 02/01/2020

Step	percent	Apprentice Base Wage	Health	Pension	Supplemental Unemployment	Total Rate
1	50	\$26.67	\$10.75	\$21.94	\$0.00	\$59.36
2	60	\$32.00	\$10.75	\$21.94	\$0.00	\$64.69
3	70	\$37.34	\$10.75	\$21.94	\$0.00	\$70.03
4	80	\$42.67	\$10.75	\$21.94	\$0.00	\$75.36
5	90	\$48.01	\$10.75	\$21.94	\$0.00	\$80.70

Effective Date - 08/01/2020

Step	percent	Apprentice Base Wage	Health	Pension	Supplemental Unemployment	Total Rate
1	50	\$27.35	\$10.75	\$22.09	\$0.00	\$60.19
2	60	\$32.81	\$10.75	\$22.09	\$0.00	\$65.65
3	70	\$38.28	\$10.75	\$22.09	\$0.00	\$71.12
4	80	\$43.75	\$10.75	\$22.09	\$0.00	\$76.59
5	90	\$49.22	\$10.75	\$22.09	\$0.00	\$82.06

Notes:

Apprentice to Journeyworker Ratio:1:3

TEST BORING DRILLER <i>LABORERS - FOUNDATION AND MARINE</i>	06/01/2020	\$40.55	\$8.60	\$17.24	\$0.00	\$66.39
	12/01/2020	\$41.53	\$8.60	\$17.24	\$0.00	\$67.37
	06/01/2021	\$42.55	\$8.60	\$17.24	\$0.00	\$68.39
	12/01/2021	\$43.56	\$8.60	\$17.24	\$0.00	\$69.40

For apprentice rates see "Apprentice- LABORER"

TEST BORING DRILLER HELPER <i>LABORERS - FOUNDATION AND MARINE</i>	06/01/2020	\$39.27	\$8.60	\$17.24	\$0.00	\$65.11
	12/01/2020	\$40.25	\$8.60	\$17.24	\$0.00	\$66.09
	06/01/2021	\$41.27	\$8.60	\$17.24	\$0.00	\$67.11
	12/01/2021	\$42.28	\$8.60	\$17.24	\$0.00	\$68.12

For apprentice rates see "Apprentice- LABORER"

TEST BORING LABORER <i>LABORERS - FOUNDATION AND MARINE</i>	06/01/2020	\$39.15	\$8.60	\$17.24	\$0.00	\$64.99
	12/01/2020	\$40.13	\$8.60	\$17.24	\$0.00	\$65.97
	06/01/2021	\$41.15	\$8.60	\$17.24	\$0.00	\$66.99
	12/01/2021	\$42.16	\$8.60	\$17.24	\$0.00	\$68.00

For apprentice rates see "Apprentice- LABORER"

TRACTORS/PORTABLE STEAM GENERATORS <i>OPERATING ENGINEERS LOCAL 4</i>	06/01/2020	\$48.81	\$13.00	\$15.70	\$0.00	\$77.51
	12/01/2020	\$49.95	\$13.00	\$15.70	\$0.00	\$78.65
	06/01/2021	\$51.04	\$13.00	\$15.70	\$0.00	\$79.74
	12/01/2021	\$52.18	\$13.00	\$15.70	\$0.00	\$80.88

For apprentice rates see "Apprentice- OPERATING ENGINEERS"

Classification	Effective Date	Base Wage	Health	Pension	Supplemental Unemployment	Total Rate
TRAILERS FOR EARTH MOVING EQUIPMENT <i>TEAMSTERS JOINT COUNCIL NO. 10 ZONE A</i>	06/01/2020	\$37.12	\$12.41	\$13.72	\$0.00	\$63.25
	08/01/2020	\$37.12	\$12.91	\$13.72	\$0.00	\$63.75
	12/01/2020	\$37.12	\$12.91	\$14.82	\$0.00	\$64.85
	06/01/2021	\$37.92	\$12.91	\$14.82	\$0.00	\$65.65
	08/01/2021	\$37.92	\$13.41	\$14.82	\$0.00	\$66.15
	12/01/2021	\$37.92	\$13.41	\$16.01	\$0.00	\$67.34
TUNNEL WORK - COMPRESSED AIR <i>LABORERS (COMPRESSED AIR)</i>	06/01/2020	\$51.38	\$8.60	\$17.69	\$0.00	\$77.67
	12/01/2020	\$52.36	\$8.60	\$17.69	\$0.00	\$78.65
	06/01/2021	\$53.38	\$8.60	\$17.69	\$0.00	\$79.67
	12/01/2021	\$54.39	\$8.60	\$17.69	\$0.00	\$80.68
For apprentice rates see "Apprentice- LABORER"						
TUNNEL WORK - COMPRESSED AIR (HAZ. WASTE) <i>LABORERS (COMPRESSED AIR)</i>	06/01/2020	\$53.38	\$8.60	\$17.69	\$0.00	\$79.67
	12/01/2020	\$54.36	\$8.60	\$17.69	\$0.00	\$80.65
	06/01/2021	\$55.38	\$8.60	\$17.69	\$0.00	\$81.67
	12/01/2021	\$56.39	\$8.60	\$17.69	\$0.00	\$82.68
For apprentice rates see "Apprentice- LABORER"						
TUNNEL WORK - FREE AIR <i>LABORERS (FREE AIR TUNNEL)</i>	06/01/2020	\$43.45	\$8.60	\$17.69	\$0.00	\$69.74
	12/01/2020	\$44.43	\$8.60	\$17.69	\$0.00	\$70.72
	06/01/2021	\$45.45	\$8.60	\$17.69	\$0.00	\$71.74
	12/01/2021	\$46.46	\$8.60	\$17.69	\$0.00	\$72.75
For apprentice rates see "Apprentice- LABORER"						
TUNNEL WORK - FREE AIR (HAZ. WASTE) <i>LABORERS (FREE AIR TUNNEL)</i>	06/01/2020	\$45.45	\$8.60	\$17.69	\$0.00	\$71.74
	12/01/2020	\$46.43	\$8.60	\$17.69	\$0.00	\$72.72
	06/01/2021	\$47.45	\$8.60	\$17.69	\$0.00	\$73.74
	12/01/2021	\$48.46	\$8.60	\$17.69	\$0.00	\$74.75
For apprentice rates see "Apprentice- LABORER"						
VAC-HAUL <i>TEAMSTERS JOINT COUNCIL NO. 10 ZONE A</i>	06/01/2020	\$36.54	\$12.41	\$13.72	\$0.00	\$62.67
	08/01/2020	\$36.54	\$12.91	\$13.72	\$0.00	\$63.17
	12/01/2020	\$36.54	\$12.91	\$14.82	\$0.00	\$64.27
	06/01/2021	\$37.34	\$12.91	\$14.82	\$0.00	\$65.07
	08/01/2021	\$37.34	\$13.41	\$14.82	\$0.00	\$65.57
	12/01/2021	\$37.34	\$13.41	\$16.01	\$0.00	\$66.76
WAGON DRILL OPERATOR <i>LABORERS - ZONE 1</i>	06/01/2020	\$39.40	\$8.60	\$17.09	\$0.00	\$65.09
	12/01/2020	\$40.38	\$8.60	\$17.09	\$0.00	\$66.07
	06/01/2021	\$41.40	\$8.60	\$17.09	\$0.00	\$67.09
	12/01/2021	\$42.41	\$8.60	\$17.09	\$0.00	\$68.10
For apprentice rates see "Apprentice- LABORER"						
WASTE WATER PUMP OPERATOR <i>OPERATING ENGINEERS LOCAL 4</i>	06/01/2020	\$49.33	\$13.00	\$15.70	\$0.00	\$78.03
	12/01/2020	\$50.48	\$13.00	\$15.70	\$0.00	\$79.18
	06/01/2021	\$51.58	\$13.00	\$15.70	\$0.00	\$80.28
	12/01/2021	\$52.73	\$13.00	\$15.70	\$0.00	\$81.43
For apprentice rates see "Apprentice- OPERATING ENGINEERS"						
WATER METER INSTALLER <i>PLUMBERS & GASFITTERS LOCAL 12</i>	03/01/2020	\$58.69	\$12.07	\$17.26	\$0.00	\$88.02
	09/01/2020	\$60.19	\$12.07	\$17.26	\$0.00	\$89.52
	03/01/2021	\$61.69	\$12.07	\$17.26	\$0.00	\$91.02
For apprentice rates see "Apprentice- PLUMBER/PIPEFITTER" or "PLUMBER/GASFITTER"						

Outside Electrical - East

Issue Date: 06/10/2020

Wage Request Number: 20200610-060

Page 34 of 36

Classification	Effective Date	Base Wage	Health	Pension	Supplemental Unemployment	Total Rate
CABLE TECHNICIAN (Power Zone) <i>OUTSIDE ELECTRICAL WORKERS - EAST LOCAL 104</i>	09/01/2019	\$28.83	\$8.75	\$1.86	\$0.00	\$39.44
	08/30/2020	\$29.67	\$9.25	\$1.89	\$0.00	\$40.81
For apprentice rates see "Apprentice- LINEMAN"						
CABLEMAN (Underground Ducts & Cables) <i>OUTSIDE ELECTRICAL WORKERS - EAST LOCAL 104</i>	09/01/2019	\$40.84	\$8.75	\$10.02	\$0.00	\$59.61
	08/30/2020	\$42.03	\$9.25	\$10.27	\$0.00	\$61.55
For apprentice rates see "Apprentice- LINEMAN"						
DRIVER / GROUNDMAN CDL <i>OUTSIDE ELECTRICAL WORKERS - EAST LOCAL 104</i>	09/01/2019	\$33.64	\$8.75	\$9.86	\$0.00	\$52.25
	08/30/2020	\$34.62	\$9.25	\$10.07	\$0.00	\$53.94
For apprentice rates see "Apprentice- LINEMAN"						
DRIVER / GROUNDMAN -Inexperienced (<2000 Hrs) <i>OUTSIDE ELECTRICAL WORKERS - EAST LOCAL 104</i>	09/01/2019	\$26.43	\$8.75	\$1.79	\$0.00	\$36.97
	08/30/2020	\$27.20	\$9.25	\$1.82	\$0.00	\$38.27
For apprentice rates see "Apprentice- LINEMAN"						
EQUIPMENT OPERATOR (Class A CDL) <i>OUTSIDE ELECTRICAL WORKERS - EAST LOCAL 104</i>	09/01/2019	\$40.84	\$8.75	\$14.10	\$0.00	\$63.69
	08/30/2020	\$42.03	\$9.25	\$14.35	\$0.00	\$65.63
For apprentice rates see "Apprentice- LINEMAN"						
EQUIPMENT OPERATOR (Class B CDL) <i>OUTSIDE ELECTRICAL WORKERS - EAST LOCAL 104</i>	09/01/2019	\$36.04	\$8.75	\$10.65	\$0.00	\$55.44
	08/30/2020	\$37.09	\$9.25	\$10.87	\$0.00	\$57.21
For apprentice rates see "Apprentice- LINEMAN"						
GROUNDMAN <i>OUTSIDE ELECTRICAL WORKERS - EAST LOCAL 104</i>	09/01/2019	\$21.62	\$8.75	\$1.65	\$0.00	\$32.02
	08/30/2020	\$22.25	\$9.25	\$1.67	\$0.00	\$33.17
For apprentice rates see "Apprentice- LINEMAN"						
GROUNDMAN -Inexperienced (<2000 Hrs.) <i>OUTSIDE ELECTRICAL WORKERS - EAST LOCAL 104</i>	09/01/2019	\$26.43	\$8.75	\$1.79	\$0.00	\$36.97
	08/30/2020	\$27.20	\$9.25	\$1.82	\$0.00	\$38.27
For apprentice rates see "Apprentice- LINEMAN"						
JOURNEYMAN LINEMAN <i>OUTSIDE ELECTRICAL WORKERS - EAST LOCAL 104</i>	09/01/2019	\$48.05	\$8.75	\$17.19	\$0.00	\$73.99
	08/30/2020	\$49.45	\$9.25	\$17.48	\$0.00	\$76.18

Classification

Effective Date Base Wage Health Pension Supplemental Unemployment Total Rate

Apprentice - LINEMAN (Outside Electrical) - East Local 104

Effective Date - 09/01/2019

Step	percent	Apprentice Base Wage	Health	Pension	Supplemental Unemployment	Total Rate
1	60	\$28.83	\$8.75	\$3.36	\$0.00	\$40.94
2	65	\$31.23	\$8.75	\$3.44	\$0.00	\$43.42
3	70	\$33.64	\$8.75	\$3.51	\$0.00	\$45.90
4	75	\$36.04	\$8.75	\$5.08	\$0.00	\$49.87
5	80	\$38.44	\$8.75	\$5.15	\$0.00	\$52.34
6	85	\$40.84	\$8.75	\$5.23	\$0.00	\$54.82
7	90	\$43.25	\$8.75	\$7.30	\$0.00	\$59.30

Effective Date - 08/30/2020

Step	percent	Apprentice Base Wage	Health	Pension	Supplemental Unemployment	Total Rate
1	60	\$29.67	\$9.25	\$3.39	\$0.00	\$42.31
2	65	\$32.14	\$9.25	\$3.46	\$0.00	\$44.85
3	70	\$34.62	\$9.25	\$3.54	\$0.00	\$47.41
4	75	\$37.09	\$9.25	\$5.11	\$0.00	\$51.45
5	80	\$39.56	\$9.25	\$5.19	\$0.00	\$54.00
6	85	\$42.03	\$9.25	\$5.26	\$0.00	\$56.54
7	90	\$44.51	\$9.25	\$7.34	\$0.00	\$61.10

Notes:

Apprentice to Journeyworker Ratio:1:2

TELEDATA CABLE SPLICER OUTSIDE ELECTRICAL WORKERS - EAST LOCAL 104	02/04/2019	\$30.73	\$4.70	\$3.17	\$0.00	\$38.60
TELEDATA LINEMAN/EQUIPMENT OPERATOR OUTSIDE ELECTRICAL WORKERS - EAST LOCAL 104	02/04/2019	\$28.93	\$4.70	\$3.14	\$0.00	\$36.77
TELEDATA WIREMAN/INSTALLER/TECHNICIAN OUTSIDE ELECTRICAL WORKERS - EAST LOCAL 104	02/04/2019	\$28.93	\$4.70	\$3.14	\$0.00	\$36.77

Additional Apprentice Information:

Minimum wage rates for apprentices employed on public works projects are listed above as a percentage of the pre-determined hourly wage rate established by the Commissioner under the provisions of the M.G.L. c. 149, ss. 26-27D. Apprentice ratios are established by the Division of Apprenticeship Training pursuant to M.G.L. c. 23, ss. 11E-11L.

All apprentices must be registered with the Division of Apprenticeship Training in accordance with M.G.L. c. 23, ss. 11E-11L.

All steps are six months (1000 hours.)

Ratios are expressed in allowable number of apprentices to journeymen or fraction thereof, unless otherwise specified.

** Multiple ratios are listed in the comment field.

*** APP to JM; 1:1, 2:2, 2:3, 3:4, 4:4, 4:5, 4:6, 5:7, 6:7, 6:8, 6:9, 7:10, 8:10, 8:11, 8:12, 9:13, 10:13, 10:14, etc.

**** APP to JM; 1:1, 1:2, 2:3, 2:4, 3:5, 4:6, 4:7, 5:8, 6:9, 6:10, 7:11, 8:12, 8:13, 9:14, 10:15, 10:16, etc.

Issue Date: 06/10/2020

Wage Request Number: 20200610-060

Page 36 of 36

The Massachusetts Prevailing Wage Law

M.G.L. ch. 149, §§ 26 – 27

NOTICE TO AWARDING AUTHORITIES

- The enclosed wage schedule applies only to the specific project listed at the top and will be updated for any public construction project lasting longer than one (1) year.
- You should request an updated wage schedule from the Division of Occupational Safety if you have not opened bids or selected a contractor within 90 days of the date of issuance of the enclosed wage schedule.
- The wage schedule shall be incorporated in any advertisement or call for bids for the project for which it has been issued.
- Once a contractor has been selected by the awarding authority, the wage schedule shall be made a part of the contract for that project.

NOTICE TO CONTRACTORS

- The enclosed wage schedule, and any updated schedule, must be posted in a conspicuous place at the work site during the life of the project.
- The wages listed on the enclosed wage schedule must be paid to employees on public works projects regardless of whether they are employed by the prime contractor, a filed sub-bidder, or any sub-contractor.
- The enclosed wage schedule applies to all phases of the project including the final clean-up. Contractors whose only role is to perform final clean-up must pay their employees according to this wage schedule.
- All apprentices must be registered with the Massachusetts Division of Apprentice Training in order to be paid at the reduced apprentice rates. If a worker is not registered with the Division of Apprentice Training, they must be paid the “total rate” listed on the wage schedule regardless of experience or skill level. For further information, please call (617) 727-3486 or write to the Division of Apprentice Training, 399 Washington Street, 4th Floor, Boston, MA 02108

**WEEKLY PAYROLL RECORDS REPORT
& STATEMENT OF COMPLIANCE**

In accordance with Massachusetts General Law c149, §27B, a true and accurate record must be kept of all persons employed on the public works project for which the enclosed rates have been provided. A Payroll Form has been printed on the reverse of this page and includes all the information required to be kept by law. Every contractor or subcontractor is required to keep these records and preserve them for a period of three years from the date of completion of the contract.

In addition, every contractor and subcontractor is required to submit a copy of their weekly payroll records to the awarding authority. This is required to be done on a weekly basis. Once collected, the awarding authority is also required to preserve those records for three years.

In addition, each such contractor, subcontractor or public body shall furnish to the Department of Labor & Workforce Development/Division of Occupational Safety within fifteen days after completion of its portion of the work a statement, executed by the contractor, subcontractor or public body who supervises the payment of wages, in the following form:

STATEMENT OF COMPLIANCE

_____, 2020

I, _____,

(Name of signatory party) (Title)

do hereby state:

That I pay or supervise the payment of the persons employed by

_____ on the _____
(Contractor, subcontractor or public body) (Building or project)

and that all mechanics and apprentices, teamsters, chauffeurs and laborers employed on said project have been paid in accordance with wages determined under the provisions of sections twenty-six and twenty-seven of chapter one hundred and forty-nine of the General Laws.

Signature _____

Title _____

DIVISION OF OCCUPATIONAL SAFETY, 399 WASHINGTON STREET, 5TH FL., BOSTON, MA. 02108

WEEKLY PAYROLL REPORT FORM

Company Name:

Prime Contractor

Project Name:

Subcontractor

Awarding Auth.:

List Prime Contractor:

Work Week Ending:

Employer Signature:

Print Name & Title:

Employee Name & Address	Work Classification	Hours Worked							(A) Tot. Hrs.	(B) Hourly Base Wage	Employer Contributions			(F) [B+C+D+E] Hourly Total Wage (prev. wage)	(G) [A*F] Weekly Total Amount
		S	M	T	W	T	F	S			(C) Health & Welfare	(D) Pension	(E) Supp. Unemp		

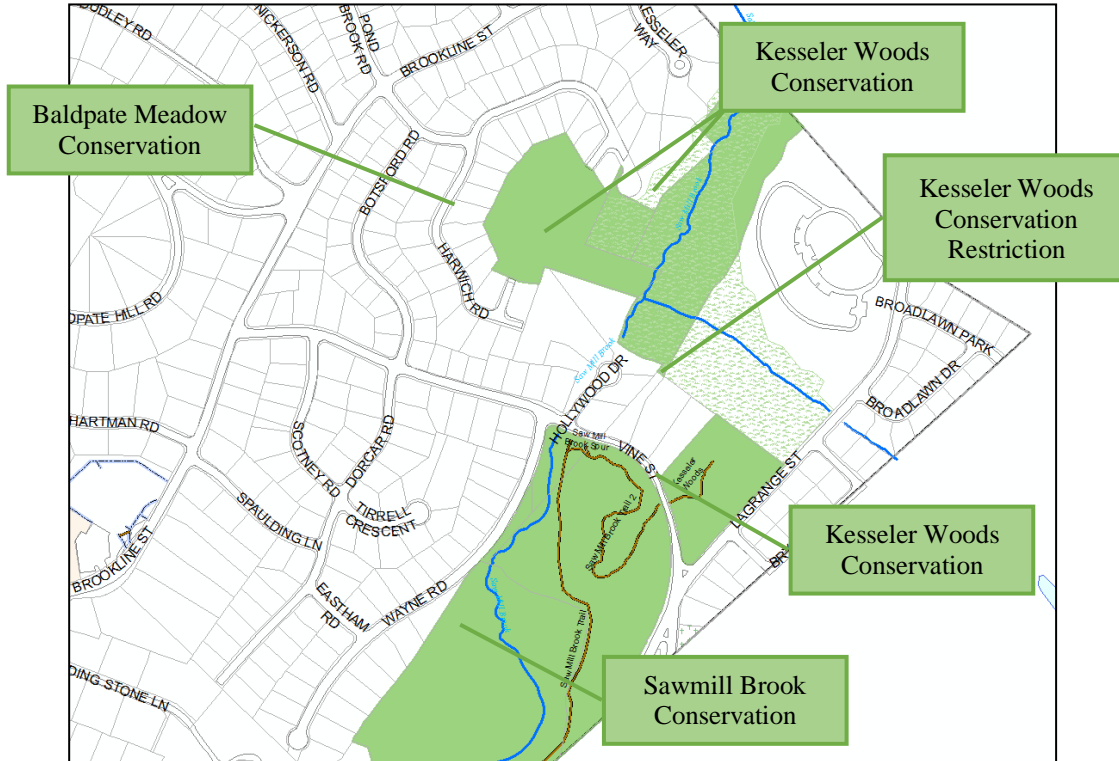
NOTE: Every contractor and subcontractor is required to submit a copy of their weekly payroll records to the awarding authority.

KESSELER WOODS CONSERVATION AREA – WETLAND TRAIL CREATION SUMMARY OF WORK

Site Overview

Kessler Woods Conservation Area, located in southeastern Newton (in the village of Oak Hill) is comprised of three non-contiguous undeveloped parcels owned by the City (totaling 11.3 acres) and one Conservation Restriction area on private property with a public access easement (5.43 acres), collectively “the Property”. The area is all woods and wetlands; Saw Mill Brook and an unnamed brook run through the Property.

Kessler Woods Conservation Area is adjacent to two other conservation areas owned by the City, Baldpate Meadow Conservation Area and Sawmill Brook Conservation Area.



Project Overview

The City of Newton’s Conservation Commission is seeking to construct roughly 450-feet of trail and boardwalk south and east from Harwich Road, through Kessler Woods Conservation Area and across Saw Mill Brook to allow public access to and use of the recently acquired Kessler Conservation Area parcels and Conservation Restriction. This trail/boardwalk will traverse a large vegetated wetland (where boardwalk will be required) and include one stream crossing (where a bridge will be required).

The Newton Conservation Commission is providing (attached) scaled base plans (pdf format) of the site showing: proposed alignment of the trail, boardwalk, and bridge; 1’ topography; land ownership and Conservation Restriction boundaries (i.e., the areas over which the City has or does not have rights to construct this trail); wetland features; and aerial photography.

The City will build the remainder of the trail (south to LaGrange Street) beginning at the southern end of the bridge. The Newton Conservation Office shall secure all necessary permits from the City of Newton. This will include a permit from the Conservation Commission and may include a permit from the Building Department.

Minimum Qualifications of Bidder

Anyone submitting a proposal must satisfy all of the following minimum criteria. Proposals that do not demonstrate compliance with the minimum criteria will not be considered.

1. Documented experience with the design and construction of trails, boardwalks, and bridges within natural conservation areas.
2. Evidence of ready access to the services of all necessary disciplines such as engineering, landscape design, and construction necessary to perform the work.
3. Evidence of success as Project Manager of projects of comparable size and scope.
4. Evidence of success delivering similar trail/boardwalk projects on time and within budget.
5. Evidence of success working with project stakeholders, i.e., representatives of “friends” groups, neighborhood groups, and City departments.

Price of Work

The proposed price must include the cost of all design, labor, materials, transportation, insurance, and all other necessary expenses to fulfill the intent and conditions of the entire scope of work. All travel costs to be incurred by the contractor shall be borne by contractor. All cost estimates must be calculated based on prevailing wages. The Newton Conservation Commission shall accept the lowest qualified and responsive bid. **No bids over \$80,000 shall be considered.**

Scope of Work and Work Specifications

Section 1 - Control of Work and Materials

1.1 Hauling, Handling and Storage of Materials

- A. The Contractor shall, at their own expense, handle and haul all materials furnished by them and shall remove any of their surplus materials at the completion of the work.
- B. The Contractor shall provide suitable and adequate storage for equipment and materials furnished by them that are liable to injury and shall be responsible for any loss of or damage to any equipment or materials by theft, breakage, or otherwise.
- C. All excavated materials and equipment to be incorporated in the Work shall be placed so as not to injure any part of the Work or existing facilities and so that free access can be had at all times to all parts of the Work. Materials and equipment shall be kept neatly piled and compactly stored in such location as will cause minimum inconvenience to public travel and adjoining owners, tenants and occupants.
- D. The Contractor shall be responsible for all damages to the work under construction during its progress and until final completion and acceptance even though partial payments may have been made under the Contract.

1.2 Open Excavations

- A. All open excavations shall be adequately safeguarded by providing temporary barricades, caution signs, lights and other means to prevent accidents to persons, and damage to property. The Contractor shall, at their own expense, provide suitable and safe means for completely covering all open excavations if applicable.

1.3 Maintenance of Traffic

- A. Construction traffic and operations shall be conducted so that vehicular and pedestrian traffic may be safely maintained at all times.
- B. Should the Chief of Police deem it necessary, uniformed officers will be assigned to direct traffic. The Contractor shall make all arrangements in obtaining uniformed officers required.
- C. The Contractor shall furnish all construction signs that are deemed necessary by and in accordance with Part VI of the Manual on Uniform Traffic Control Devices as published by the U.S. Department of Transportation. In addition, the Contractor may be required to furnish up to 128 square feet of additional

special construction warning signs. Size and exact wording of signs shall be determined by the Owner during construction.

- D. The intent of policing is to ensure public safety by direction of traffic. Police officers are not to serve as watchmen to protect the Contractor's equipment and materials.
- E. Nothing contained herein shall be construed as relieving the Contractor of any of their responsibilities for protection of persons and property under the terms of the Contract.

1.4 Care and Protection of Property

- A. The Contractor shall be responsible for the preservation of all public and private property and shall use every precaution necessary to prevent damage thereto. If any direct or indirect damage is done to public or private property by or on account of any act, omission, neglect, or misconduct in the execution of the work on the part of the Contractor, such property shall be promptly restored by the Contractor, at their expense, to a condition similar or equal to that existing before the damage was done, to the satisfaction of the Owner.

1.5 Erosion Control

- A. At the conclusion of the work and following approval by the Owner's representative, the Contractor shall remove all erosion and sedimentation controls as well as trapped sediments as described in Section 8 CLEANING UP.

1.6 Rejected Materials and Defective Work

- A. Materials furnished by the Contractor and condemned by the Owner as unsuitable or not in conformity with the specifications shall forthwith be removed from the work by the Contractor and shall not be made use of elsewhere in the work.
- B. Any errors, defects or omissions in the execution of the work or in the materials furnished by the Contractor, even though they may have been passed or overlooked or have appeared after the completion of the work, discovered at any time before the final payment is made hereunder, shall be forthwith rectified and made good by and at the expense of the Contractor and in a manner satisfactory to the Owner.
- C. The Contractor shall reimburse the Owner for any expense, losses or damages incurred in consequence of any defect, error, omission or act of the Contractor or their employees, as determined by the Owner, occurring prior to the final payment.

1.7 Sanitary Regulations

- A. Sanitary conveniences for the use of all persons employed on the work, properly screened from public observation, shall be provided in sufficient numbers in such manner and at such locations as may be approved. The contents shall be removed and disposed of in a satisfactory manner as the occasion requires. The Contractor shall rigorously prohibit the committing of nuisances within, on or about the work. Any employees found violating these provisions shall be discharged and not again employed on the work without the written consent of the Owner. The sanitary conveniences specified above shall be the obligation and responsibility of the Contractor.

1.8 Safety and Health Regulations

- A. This project is subject to the Safety and Health regulations of the U.S. Department of Labor set forth in 29 CFR, Part 1926, and to the Massachusetts Department of Labor and Industries, Division of Industrial Safety "Rules and Regulations for the Prevention of Accidents in Construction Operations (454 CMR 10.0 et. seq.)." Contractors shall be familiar with the requirements of these regulations.

1.9 Site Investigation and Equivalent Experience

- A. The Contractor acknowledges that they have satisfied themselves as to the conditions existing at the site of the work, the type of equipment required to perform this work, the quality and quantity of the materials furnished insofar as this information is reasonably ascertainable from an inspection of the site, as well as from information presented by the drawings and specifications made a part of this contract. Any failure of the Contractor to acquaint themselves with available information will not relieve them from the responsibility for estimating properly the difficulty or cost of successfully performing the work. The

Owner assumes no responsibility for any conclusion or interpretation made by the Contractor based on the information made available by the Owner.

Section 2 - Submittals

2.1 Work Included

- A. The contractor shall provide the Owner with Submittals as required by the contract documents, including but not limited to: background information on principal and sub-contracting companies; synopses of comparable trail and boardwalk projects, including for each: a one-paragraph description, dates of service, and a contact/reference name, address, email and telephone number; Proposer's Qualifications and References Form; Certificate of Tax Compliance; Certificate of Non-Collusion; Debarment Letter; and IRS Form W-9.
- B. The Contractor shall submit letter of interest demonstrating project philosophy and approach, creative/cost-effective design.
- C. The Contractor shall submit site construction drawing for the natural trail, boardwalk, the bridge, and the bridge railings, by email electronic copy in Portable Document Format (PDF).
- D. The Contractor shall submit details of construction for the boardwalk, the bridge, and the bridge railings by email electronic copy in Portable Document Format (PDF).
- E. The Contractor shall submit a materials list, deliverables and construction schedule, by email electronic copy in Portable Document Format (PDF) . Materials list shall ensure that all proposed materials allow for:
 - 1. a free passage width of at least 3-feet;
 - 2. slip-resistance in all weather conditions;
 - 3. appropriate and safe trail cross-sections;
 - 4. easy maintenance and repair;
 - 5. resistance to natural flow and flood regimes (warranted for at least 10 years); and
 - 6. universal access, meeting all ADA-relevant details for trails and boardwalks.
- F. The Contractor shall submit for approval two sets of details and literature fully describing environmental protection methods to be employed in carrying out construction activities.
- G. The Owner will review the drawings as to their general conformance with the design concept of the project and general compliance with the information given in the Contract Documents. Corrections of comments made on the drawings during the review do not relieve the Contractor from compliance with requirements of the Contract Documents. The Contractor is responsible for confirming and correlating all quantities and dimensions; selecting fabrication processes and techniques of construction; coordinating his work with that of all other trades; and performing his work in a safe and satisfactory manner.
- H. The Contractor shall submit 2 sets of certificates of wood treatment upon delivery of treated wood product. Treated wood product shall bear appropriate American Wood Preservers Bureau (AWPB) quality mark.

Section 3 – Boardwalk and Bridge

3.1 Work Included

- A. This section covers furnishing and installation of lumber and other materials for the boardwalks and bridges, and associated bumpers and railings, where required.
- B. This section covers anchors/footings that must ensure short and long-term stability of the entire structure.
- C. Fasteners such as nails, screws, bolts, brackets, and all other hardware and materials for fastening and securing items provided under this section of the specification shall be furnished under this section.

3.2 Materials

- A. *Lumber Quality*
 - 1. Lumber shall be delivered to the job dry, and shall be protected from injury, dirt, dampness, and extreme changes of temperature and humidity at all times.
 - 2. The grades of all materials under this section shall be defined by the rules of the recognized associations of lumber manufacturers producing the material specified, but the maximum defects and blemishes permissible in any specified grades shall not exceed the limitations of the American Lumber Standards.

3. Lumber shall bear the grade and trademark of the association under whose rules it is produced, and a mark of mill identification. Lumber shall be of sound stock, thoroughly seasoned, kiln dried to a moisture content not exceeding 12 percent. Lumber shall be in commercial long lengths.
4. Exposed surfaces of wood shall be free from defects or blemishes.
5. All lumber for boardwalks shall be White Oak lumber of "Heartwood Quality" or lumber of equal quality and durability, shall be pressure treated, and suitable for #1 ground contact.
6. Materials not specifically listed shall be of an accepted grade dictated by good practice.

B. Wood Preservation Treatment

1. Lumber encased in or in contact with the ground shall be pressure treated with a pentachlorophenol preservative solution. The pentachlorophenol shall meet the requirements of the American Wood-Preserver's Association, AWPAs Standard P-8, "Standards for Oil-Borne Preservatives." The solvent carrier shall meet the requirements of AWPAs Standard P-9 "Standard for Hydrocarbon Solvents for Oil-Borne Preservatives." The preservative solution shall be equivalent to five percent of pure pentachlorophenol.
2. The treatment shall be applied in accordance with AWPAs Standard C-2 (lumber, timber, etc.), C-9 (plywood) or C-28 (lumber treated before laminating). Penetration of pentachlorophenol shall be determined using the penta check method, Section 5, AWPAs Standard A-3. Retention of pentachlorophenol shall be a minimum of 0.40 pounds per cubic foot of wood for inground exposures. The treating company shall furnish a notarized certificate of treatment that indicates all pertinent details of the treatment.
3. Before the preservative treatment is applied, the lumber to be treated shall be sawed to exact lengths required, and bored ready for use in the work so far as practicable, in order to reduce to a minimum cutting or boring of lumber after treatment. Only lumber of the same kind and approximately the same size and seasoning shall be treated in any one charge. All surfaces of treated lumber cut after treatment shall receive two heavy brush coats of pentachlorophenol solution before the lumber is placed in the work.

C. Alternative and Supplemental Materials

1. Should materials alternative to lumber or needed in addition to lumber be proposed for decking, stringers, or bumpers, these shall be reviewed for cost and durability by the Owner. If materials prove to be comparable to lumber alternatives, they may be accepted for specified portions of bridges or boardwalks.
2. All alternative materials must be of a quality that can resist rusting and withstand being submerged for periods of time.

D. Railings

1. Top rails are to be constructed from White Oak lumber to the specification listed above in 3.2 A and 3.2 B. Alternate materials will be considered if comparable in durability and cost.
2. All other railing materials are not required to be timber but must be of a quality that can resist rusting and withstand being submerged for periods of time.
3. Rail fastenings and hardware must meet specifications listed in 3.2 F.

E. Footings and Anchors

1. Bridge anchors proposed must minimize disturbance to the maximum extent practicable, but still be durable and able to provide long-lasting support for the bridge structure.
2. Boardwalk footings and support posts must minimize disturbance to the maximum extent practicable, but still be durable and able to provide long-lasting support for the bridge structure.
3. All footing and anchor materials must be of a quality that can resist rusting and withstand being submerged for long periods of time.

F. Hardware

1. All brackets, spikes, nails, bolts, washers, and all related hardware shall be comprised of steel and/or galvanized, unless noted otherwise on the plans. Hardware shall be sized as noted on the plans.
2. All hardware materials must be of a quality that can resist rusting and withstand being submerged for long periods of time.

3.3 Construction

- A. Work shall be erected plumb, true and square. Finish work shall be accurately mitered or butted to meet in straight hairline joints, in accordance with the best commercial practice.
- B. Field applied items shall be installed in accordance with good trade practices. Cut ends of lumber previously treated with preservative specified shall be brush coated with the same material.
- C. All brackets, spikes, nails, bolts, washers, and all related hardware shall be provided wherever required for the support, proper erection, fastening, or installation of the boardwalk and bridge.
- D. Support posts shall be driven in no less than 24" and a maximum of 30-48", as soil conditions allow.
- E. Whenever possible boardwalk decking shall be constructed no higher than 24 inches above surface grade to prevent the need for boardwalk railings.
- F. Bridge railings shall be constructed to a height of 42" in order to meet all necessary accessibility and safety standards.

Section 4 – Geotextile Fabric

4.1 Work Included

This Section covers furnishing of all labor, materials, and equipment necessary to install specified geotextile fabrics for the natural trail shown on the drawings and as required by the Owner.

4.2 Products

- A. *Geotextile Fabric*
 - 1. Geotextile Fabric shall be of the best quality proven design and construction and shall be entirely suitable in every respect for the intended service.
- B. *Filter/Drainage Fabric*
 - 1. The filter/drainage fabric, if needed, shall be composed of continuous-filament fibers bonded together to form a sheet. The fabric shall be an average of 20 mils thick and possess the characteristics of Mirafi 140N.
 - 2. The filter/drainage fabric shall be Mirafi 140N as manufactured by Mirafi Inc., Pendergrass, GA; Foss-65 by Foss Manufacturing Co., Hampton, NH; US 120NW, as manufactured by US Fabrics, Cincinnati, OH, or approved equal.

4.3 Construction

- A. Installation of geotextile fabrics shall be strictly in accordance with manufacturer's instructions and specific layout plans and details reviewed by the Owner.
- B. Edges of geotextile fabric must not be visible after the final cleanup by the Contractor.

Section 5 - Earthwork

5.1 Work Included

- A. Under this section, the Contractor shall furnish all labor, materials, equipment and transportation required to complete Earthwork as indicated on the drawings, as designated by the Owner, or as specified herein, to complete all proposed work.
- B. Work under this section shall include the furnishing of all materials required to complete the proposed work as designed. Where "gravel" is indicated in the specifications or on the drawings, only stone conforming to this section of the specifications may be utilized.

5.2 Materials for Natural Trail

- A. 1/2"- trap rock gravel aggregate Crushed stone or gravel aggregate shall be used create the natural trail connecting to the boardwalk. Rounded stones, boulders, sandstone or similar soft stone or relatively thin slabs shall not be acceptable. The remainder of the stones shall be so graded that when placed with the larger stones the entire mass will be compact.
- B. All materials for the natural trail must be in compliance with ADA accessibility requirements.

5.3 Placing Materials for the Natural Trail

- A. The gravel shall be placed within the trail tread width (minimum 3") and shall consist of a minimum of the detailed thickness.

- B. Material should be minimally compacted until visual displacement ceases. Compaction shall be obtained by hand, using non-mechanized compaction tools where feasible, and where necessary, compaction equipment shall be no larger than a 1 and ½ ton vibratory roller.
- C. Should equipment be necessary, it shall only be used on the natural trail areas leading up to the boardwalk and no further.

Section 6 - Environmental Protection

6.1 Description

- A. The work covered by this section of the specifications consists of furnishing all labor, materials, tools and equipment and performing all work required for the prevention of environmental pollution during and as a result of construction operations under this contract.
- B. Prior to commencement of work, the Contractor shall meet with representatives of the Owner to develop mutual understandings relative to compliance of the environmental protection program.

6.2 Products

Compost Socks

- 1. Compost Socks shall consist of a 100% biodegradable exterior jute or coir netting with 100% compostable interior or approved equal, equivalent to the Filtrex Sox.
- 2. The socks will be placed and staked in the ground using wooden stakes. The wooden stakes will be placed at a minimum depth of 24-inches into the ground.

6.3 Notification and Stoppage of Work

The Owner will notify the Contractor in writing of any non-compliance with the provisions of the Order of Conditions. The Contractor shall, after receipt of such notice, immediately take corrective action. Such notice, when delivered to the Contractor or his authorized representative at the site of the work, shall be deemed sufficient for the purpose. If the Contractor fails to act promptly, the Owner may order stoppage of all or part of the work until satisfactory corrective action has been taken. No claim for an extension of time or for excess costs or damage incurred by the Contractor as a result of time lost due to any stop work orders shall be made unless it was later determined that the Contractor was in compliance.

6.4 Area of Construction Activity

- A. Insofar as possible, the Contractor shall confine their construction activities to those areas defined by the plans and specifications. All land resources within the project boundaries and outside the limits of permanent work performed under this contract shall be preserved in their present condition or be restored to a condition after completion of construction at least equal to that which existed prior to work under this contract.
- B. Equipment limits shall be set during the preliminary site visit to limit disturbance of vegetation and soil compaction.

6.5 Protection of Water Resources

- A. The Contractor shall not pollute the adjacent wetland resources with litter, debris, sediment, gravel, fuels, oils, bitumens, calcium chloride, acids or other harmful materials. It is the Contractor's responsibility to comply with all applicable Federal, State, County and Municipal laws regarding pollution of rivers and streams.
- B. All appropriate measures shall be taken to insure against spillage of any pollutants into public waters.

6.6 Protecting and Minimizing Exposed Areas

The Contractor shall limit the area of land which is exposed and free from vegetation during construction. In areas where the period of exposure will be greater than two (2) months, temporary vegetation, mulching or other protective measures shall be provided.

6.7 Location of Storage Areas

- A. The Owner shall designate a particular area or areas where the Contractor may store materials used in their operations.

- B. No excavated materials or materials used in backfill operations shall be deposited within specified areas of wetland jurisdiction, to be detailed by the Owner. Adequate measures for erosion and sediment control such as the placement of compost socks around the downstream perimeter of stockpiles shall be employed to protect any input from siltation.

6.8 Protection of Landscape

- A. The Contractor shall not deface, injure, or destroy trees or shrubs nor remove or cut them without written authority from the Owner. Branches, limbs, and roots shall not be cut except by permission of the Owner.
- B. No ropes, cables, or guys shall be fastened to or attached to any existing nearby trees for anchorages unless specifically authorized by the Owner.
- C. Excavating machinery shall be of suitable type and be operated with care to prevent injury to trees which are not to be removed, particularly overhanging branches and limbs. The Contractor shall, in any event, be responsible for any damage resulting from such use.
- D. All approved cutting shall be smoothly and neatly done without splitting or crushing. When there is unavoidable injury to branches, limbs and trunks of trees, the injured portions shall be neatly trimmed and covered with an application of grafting wax or tree healing paint as directed.
- E. Where, in the opinion of the Owner, trees may possibly be defaced, bruised, injured, or otherwise damaged by the Contractor's equipment or other operations, the Owner may require the Contractor to adequately protect such trees by placing boards, planks, poles or fencing around them. Any trees or landscape feature scarred or damaged by the Contractor's equipment or operations shall be restored as nearly as possible to its original condition at the expense of the Contractor.

6.9 Dust Control

During the progress of the work, the Contractor shall conduct their operations and maintain the area of their activities, including sweeping and sprinkling as necessary, to minimize creation and dispersion of dust.

Section 7 – Construction Layout

7.1 Scope of Work

The work under this section shall consist of field staking the horizontal alignment of all essential features and proposed work, limit of work, erosion controls, laydown areas, and other features as shown on the plans.

7.2 Layout

- A. The Contractor shall be responsible for scheduling an on-site meeting with the Owner for preliminary field verification of essential features and proposed work, and other related features as shown on the plans. This on-site meeting will serve to determine if the proposed alignment and/or layout needs adjustment, in which case, the Contractor shall suggest an appropriate revision. The proposed alignment and layout may be further refined based on consultation with the Conservation Office and joint field assessments.
- B. Any proposed alignment and layout must honor property boundaries, topography, vegetation, and soil conditions, and must optimize the user experience provided by of the final product.
- C. The Contractor shall inform the Owner when the general layout is completed and shall not begin work until the various alignments have been approved by the Owner. Any discrepancies encountered in field conditions shall be reported immediately and shall be adjusted as directed.
- D. The Contractor shall be responsible for maintaining the correct horizontal alignment of all elements, which responsibility shall not be waived by the Owner's approval of basic layout and stakeout.

Section 8 – Cleaning Up

8.1 Description

The Contractor must always employ during the progress of their work adequate cleanup measures and safety precautions to prevent injuries to persons or damage to property. The Contractor shall immediately provide adequate material, equipment and labor to cleanup and make safe any and all areas deemed necessary by the Owner.

8.2 Daily Cleanup

- A. The Contractor shall clean up, at least daily, all refuse, rubbish, scrap and surplus material, debris and unneeded construction equipment resulting from the construction operations and sweep the area. The site of the work and the adjacent areas affected thereby shall at all times present a neat, orderly and professional appearance.
- B. Upon written notification by the Owner, the Contractor shall within 24 hours clean up those areas, which in the Owner's opinion are in violation of this section and the above referenced sections of the specifications.
- C. If in the opinion of the Owner, the referenced areas are not satisfactorily cleaned up, all other work on the project shall stop until the cleanup is satisfactory.

8.3 Removal of Temporary Structure and Equipment

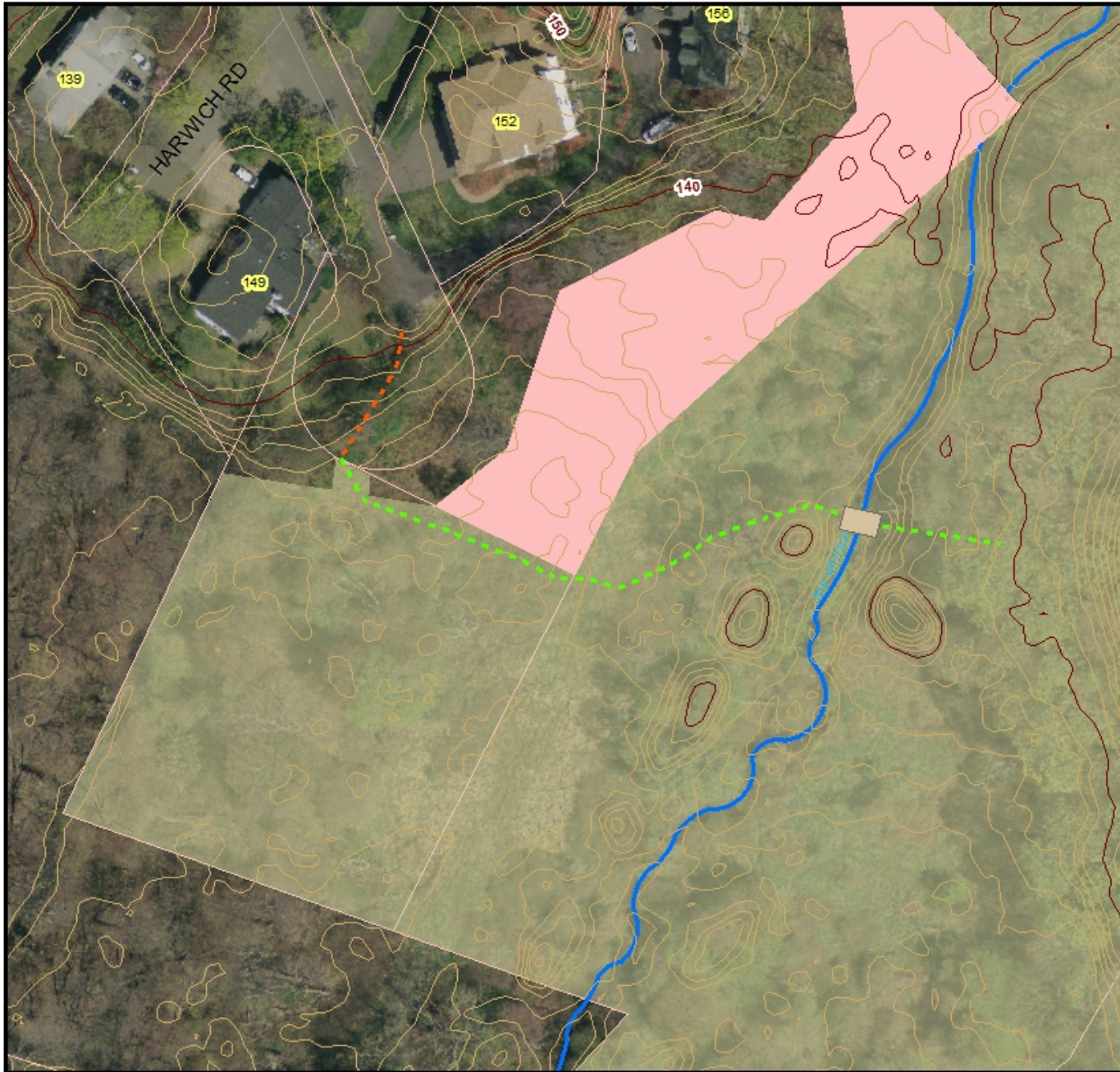
On or before completion of the work, the Contractor shall, unless otherwise specifically directed or permitted in writing, tear down and remove all temporary structures built by them; shall remove all temporary work, tools and machinery or other construction equipment furnished by them; shall remove all rubbish from any grounds which they have occupied; shall remove erosion controls used for trapping sediment; and shall leave all parts of the property and adjacent property affected by their operations in a neat and satisfactory condition.

8.4 Restoration of Damaged Property

The Contractor shall restore or replace, when and as directed, any property damaged by their work, equipment or employees, to a condition at least equal to that existing immediately prior to the beginning of operations. To this end the Contractor shall do, as required, all necessary work. Materials, equipment, and methods for such restoration shall be as approved by the Owner.

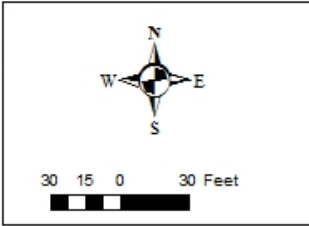
8.5 Final Cleanup

Before acceptance by the Owner, the Contractor shall perform a final cleanup to bring the construction site to its original or specified condition. This cleanup shall include removing all trash and debris off the premises. Before acceptance, the Owner shall approve the condition of the site.



**Kessler Woods
Wetland Trail Alignment
for Conservation Works
Newton, Mass.**

Map Date: 02-04-2019



Legend

- CRs w/ no access
- City Conservation Land
- Perennial Stream
- Trail needed - potential boardwalk (~75')
- Trail needed - boardwalk (~350')
- Bridge (~15')

The information on this map is from the Newton Geographic Information System (GIS). The City of Newton cannot guarantee the accuracy of this information. Each user of this map is responsible for determining its suitability for his or her intended purpose. City departments will not necessarily approve applications based solely on GIS data.



CITY OF NEWTON, MASSACHUSETTS
Mayor - Ruthanne Fuller
GIS Administrator - Douglas Greenfield