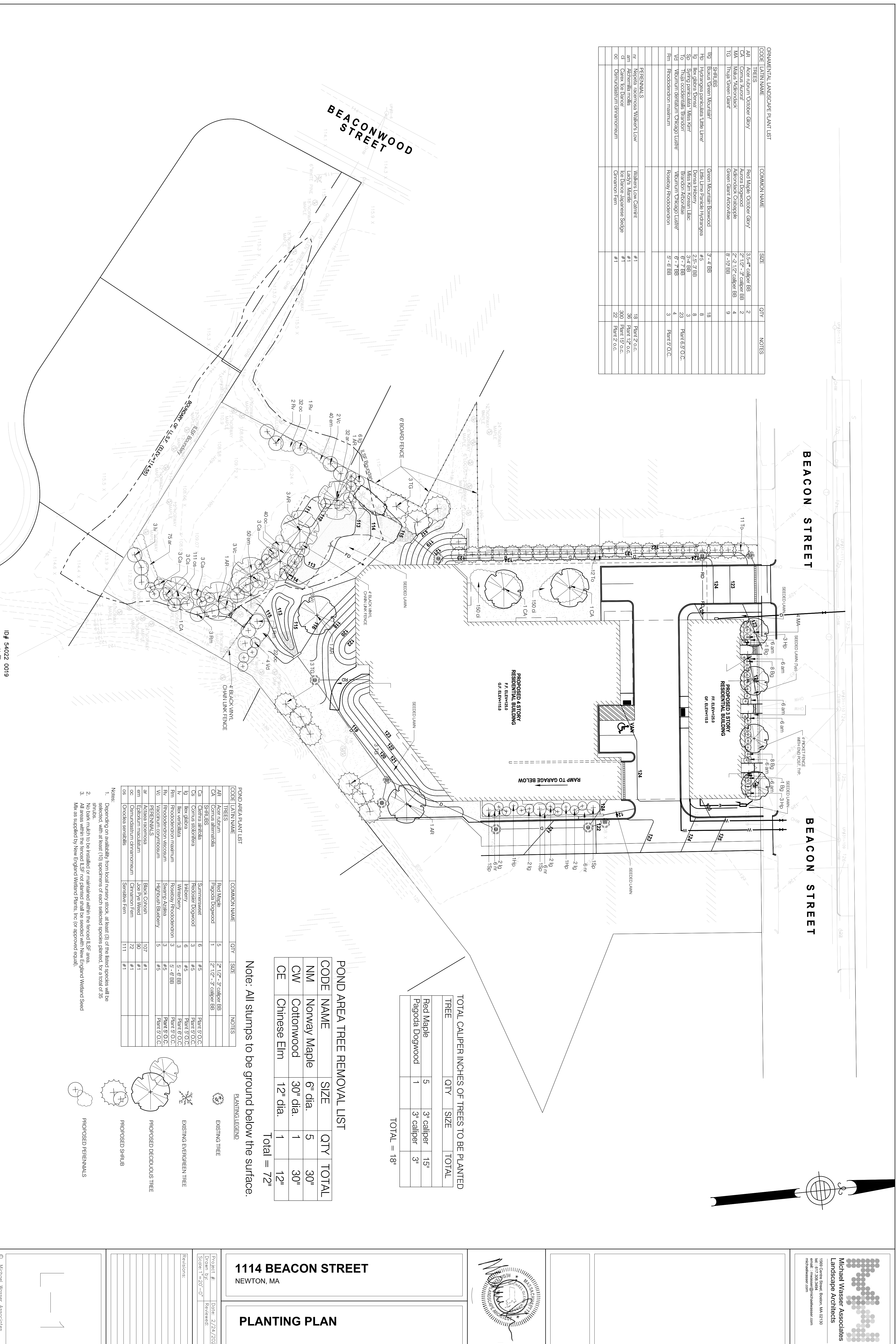


| CODE | LATIN NAME | COMMON NAME | SIZE | QTY | NOTES |
|--|----------------------------------|-------------------------------|-------------------------|-----|-----------------|
| ORNAMENTAL LANDSCAPE PLANT LIST | | | | | |
| TREES | | | | | |
| AR | Acer rubrum | October Glory | 3.5-4" caliper BB | 2 | |
| CA | Cornus Aurora | Aurora Dogwood | 2" 1/2" - 3" caliper BB | 2 | |
| MA | Malus 'Adirondack' | Adirondack Crabapple | 2" - 2 1/2" caliper BB | 4 | |
| TG | Thuja 'Green Giant' | Green Giant Arborvitae | 8 - 10' BB | 9 | |
| SHRUBS | | | | | |
| Bg | Buxus Green Mountain | Green Mountain Boxwood | 3' - 4' BB | 18 | |
| Hp | Hydrangea paniculata Little Lime | Little Lime Panicle Hydrangea | #4 2' BB | 8 | |
| Sp | Syringa paniculata Miss Kim | Miss Kim Korean Lilac | 3' - 4' BB | 9 | |
| To | Thuja occidentalis Brabant | Brabant Arborvitae | 6' - 7' BB | 23 | Plant 6.5' O.C. |
| Vd | Viburnum dentatum Chicago Lustre | Viburnum Chicago Lustre | 6' - 7' BB | 4 | |
| Rm | Rhododendron maximum | Forsythia Rhododendron | 5' - 6' BB | 3 | Plant 5' O.C. |
| PERENNIALS | | | | | |
| Wl | Waltheria racemosa Walther's Low | Walther's Low Camellia | #1 | 18 | Plant 2' O.C. |
| Bl | Campanula medium | Large Bellflower | #1 | 30 | Plant 15" O.C. |
| oc | Osmundastrum cinnamomeum | Cinnamon Fern | #1 | 22 | Plant 2' O.C. |



BEACON STREET

BEACON STREET

BEACONWOOD STREET

PROPOSED ASTORY RESIDENTIAL BUILDING FF ELEV=153 GF ELEV=155

PROPOSED 3 STORY RESIDENTIAL BUILDING FF ELEV=150 GF ELEV=153

POND AREA TREE REMOVAL LIST

| CODE | NAME | SIZE | QTY | TOTAL |
|------|--------------|----------|-----|--------------------|
| NM | Norway Maple | 6" dia. | 5 | 30" |
| CW | Cottonwood | 30" dia. | 1 | 30" |
| CE | Chinese Elm | 12" dia. | 1 | 12" |
| | | | | Total = 72" |

TOTAL CALIPER INCHES OF TREES TO BE PLANTED

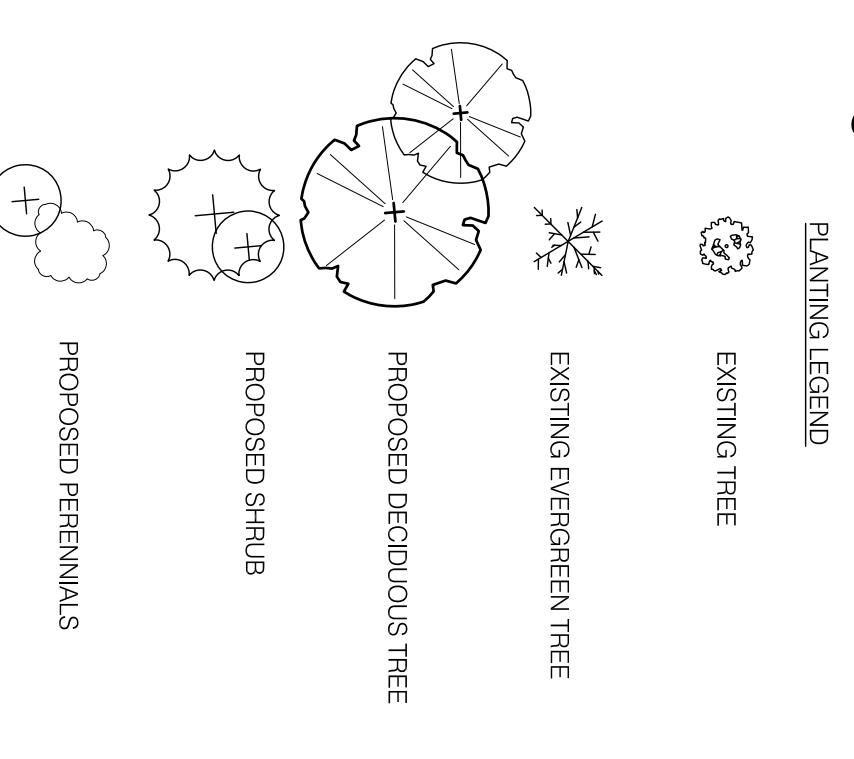
| TREE | QTY | SIZE | TOTAL |
|--------------------|-----|------------|-------|
| Red Maple | 5 | 3" caliper | 15" |
| Pagoda Dogwood | 1 | 3" caliper | 3" |
| TOTAL = 18" | | | |

Note: All stumps to be ground below the surface.

POND AREA PLANT LIST

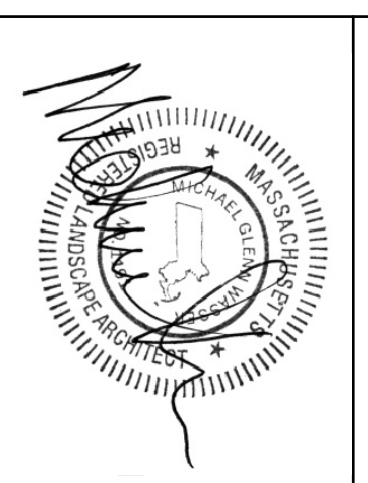
| CODE | LATIN NAME | COMMON NAME | QTY | SIZE | NOTES |
|-------------------|--------------------------|----------------------|-----|-------------------------|---------------|
| AR | Acer rubrum | Red Maple | 5 | 2" 1/2" - 3" caliper BB | |
| CA | Cornus alternifolia | Pagoda Dogwood | 1 | 2" 1/2" - 3" caliper BB | |
| SHRUBS | | | | | |
| Ca | Chaetma affinis | Summersweet | 6 | #5 | Plant 5' O.C. |
| Cs | Cornus stolonifera | Redosier Dogwood | 3 | #5 | Plant 5' O.C. |
| Ig | Ilex glabra | Hickory | 6 | #5 | Plant 5' O.C. |
| Iv | Ilex verticillata | Winterberry | 3 | 5 - 6' BB | Plant 5' O.C. |
| Rm | Rhododendron mediumum | Rosebay Rhododendron | 3 | 5 - 6' BB | Plant 5' O.C. |
| Rv | Rhododendron viscosum | Swamp Azalea | 3 | #5 | Plant 5' O.C. |
| Vc | Vaccinium corymbosum | Highbush Blueberry | 5 | #5 | Plant 5' O.C. |
| PERENNIALS | | | | | |
| Wl | Waltheria racemosa | Black Camellia | 107 | #1 | |
| Bl | Campanula medium | Large Bellflower | 90 | #1 | |
| oc | Osmundastrum cinnamomeum | Cinnamon Fern | 122 | #1 | |
| os | Oxoclea sensibilis | Sensillive Fern | 111 | #1 | |

- Notes:
- Depending on availability from local nursery stock, at least (3) of the listed species will be selected, with at least (10) specimens of each selected species planted, for a total of 35.
 - No bark mulch to be installed or maintained within the fenced I.S.F. area.
 - All areas within the fenced I.S.F. not planted shall be seeded with New England Wetland Seed Mix as supplied by New England Wetland Plants, Inc (or approved equal).



Michael Wassel Associates
Landscape Architects

1569 Green Street, Boston, MA 02130
Tel.: 617.268.3444
michael@wassel.com
www.michaelwassel.com



1114 BEACON STREET
NEWTON, MA

PLANTING PLAN

Project #: _____ Date: 2/24/2020
Drawn by: _____ Reviewed: _____
Scale: 1"=20'-0"

Revisions:

| | |
|--|--|
| | |
| | |
| | |

© Michael Wassel Associates