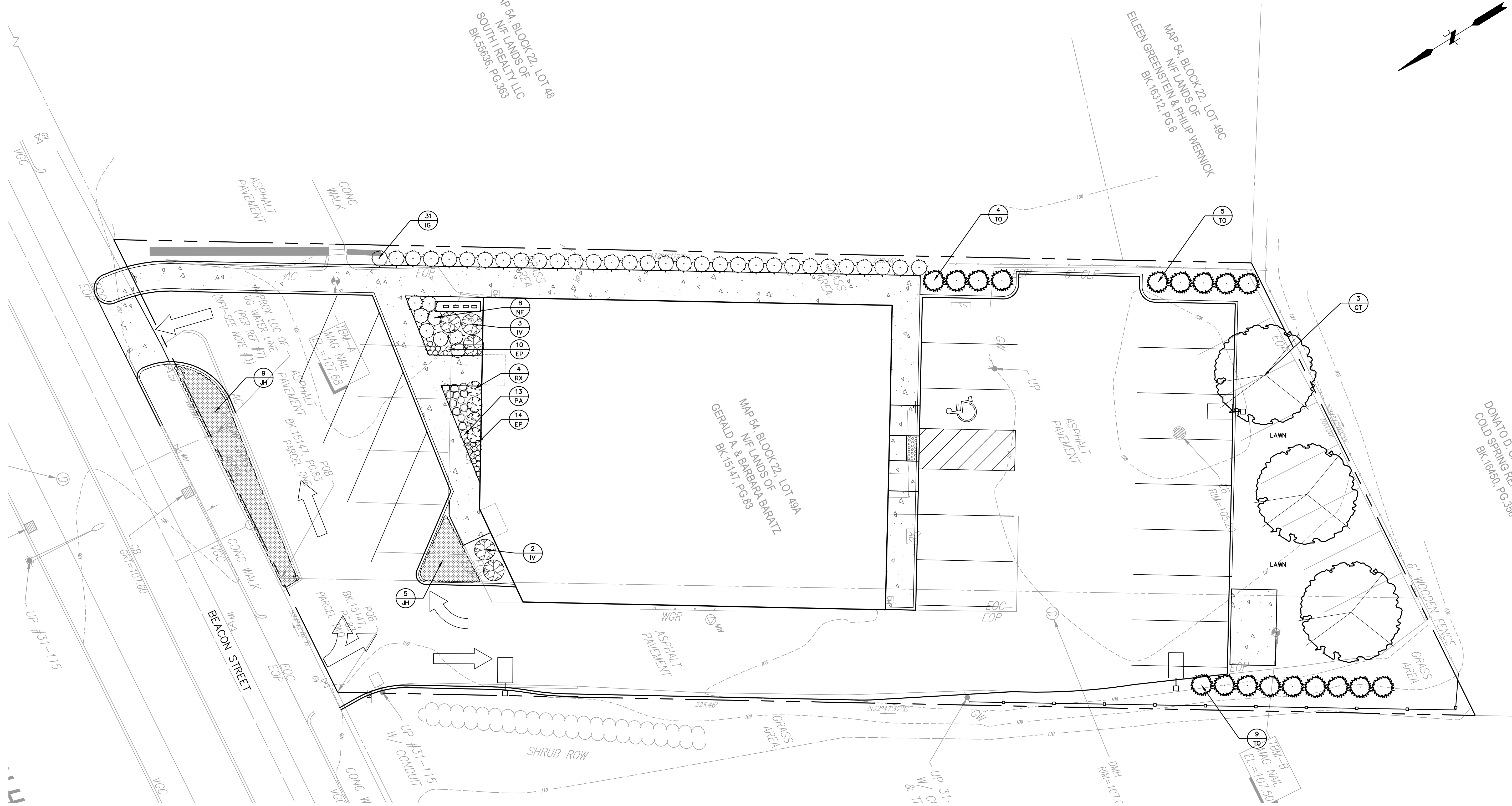


MAP 54, BLOCK 22, LOT 48  
 N/F LANDS OF  
 SOUTH I REALTY LLC  
 BK 15588 PG. 363

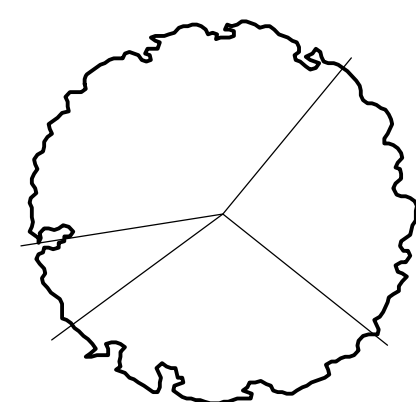
MAP 54, BLOCK 22, LOT 49C  
 N/F LANDS OF  
 EILEEN GREENSTEIN & PHILIP WERNICK  
 BK 16312 PG. 6

MAP 54, BLOCK 22, LOT 49A  
 N/F LANDS OF  
 GERALD A. & BARBARA BARATZ  
 BK 15141 PG. 83

DONATO D. CAVALLO  
 COLD SPRING REALTY  
 BK 16450 PG. 366



**LEGEND**



DECIDUOUS TREE

SHRUBS

PROPOSED PLANT QUANTITY & TYPE

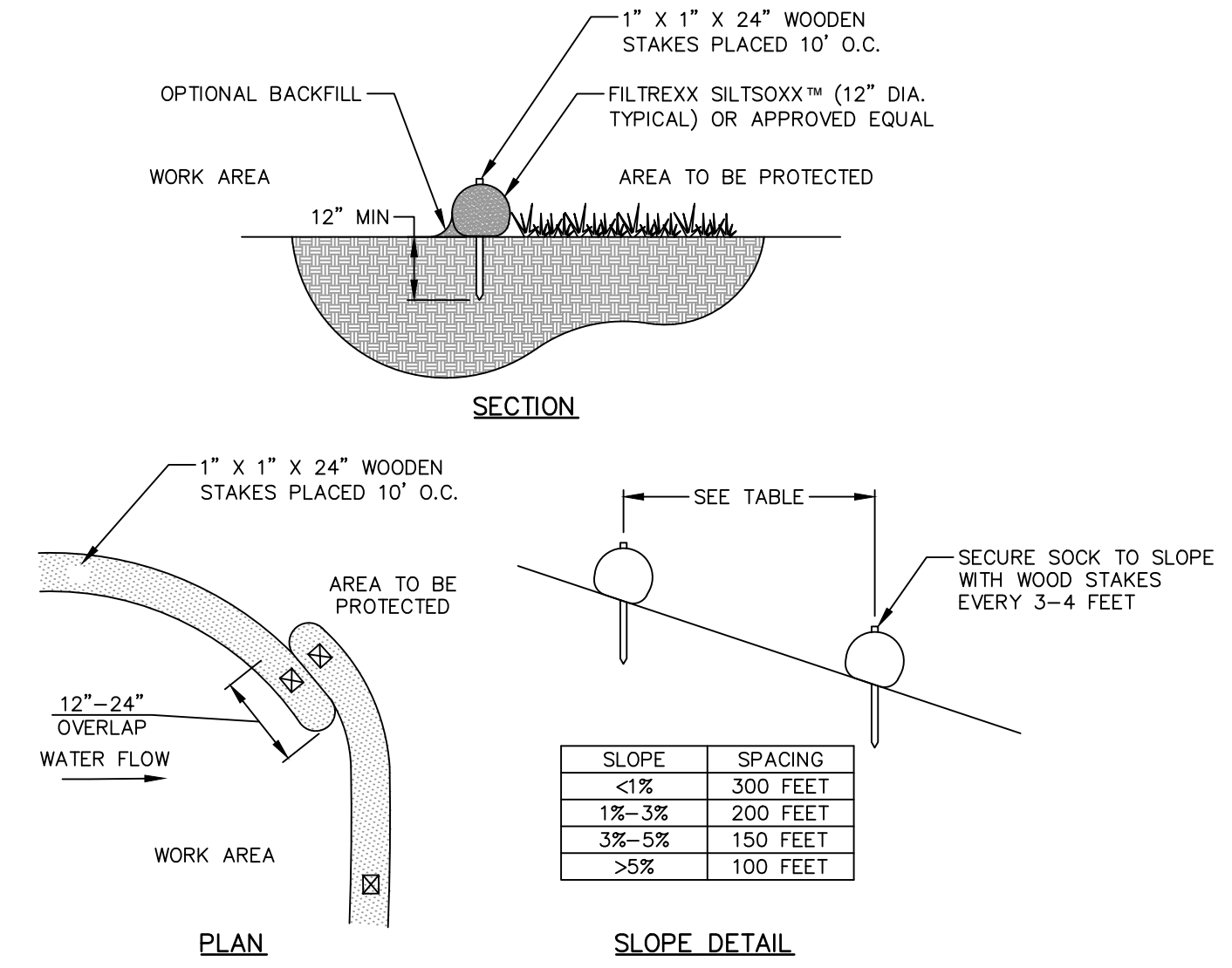
**PLANT LIST**

KEY	BOTANICAL NAME	COMMON NAME	QTY.	SIZE
<b>TREES</b>				
GT	GLEDITSIA TRIACANTHOS VAR. INERMIS SHADEMASTER	SHADEMASTER THORNTLESS HONEYLOCUST	3	3"-3.5" CAL.
TO	THUJA OCCIDENTALIS 'SMARAGD'	AMERICAN ARBORVITAE	18	3' - 4' HT.
<b>SHRUBS</b>				
IG	ILEX GLABRA 'GEM BOX'	'GEM BOX' INKBERRY	31	3 GAL.
JH	ILEX VERTICILLATA 'RED SPRITE'	'RED SPRITE' WINTERBERRY	5	5 GAL.
IV	JUNIPERUS HORIZONTALIS 'BAR HARBOR'	'BAR HARBOR' CREEPING JUNIPER	14	3 GAL.
RX	ROSA 'CHEWPAOUT' 'OSO EASY URBAN LEGEND'	'OSO EASY URBAN LEGEND' ROSE	4	3 GAL.
<b>PERENNIALS/GRASSES/GROUNDCOVERS</b>				
EP	ECHINACEA BUTTERFLY 'PURPLE EMPEROR'	BUTTERFLY 'PURPLE EMPEROR' CONEFLOWER	24	1 GAL.
NF	NEPETA 'FAASSENII' 'CAT'S MEOW'	'CAT'S MEOW' CATMINT	8	1 GAL.
PA	PENNISETUM ALOPECUROIDES 'LITTLE BUNNY'	LITTLE BUNNY FOUNTAIN GRASS	13	1 GAL.

**PLANTING NOTES:**

- ALL PLANTING MATERIAL TO BE NURSERY GROWN STOCK SUBJECT TO A.A.N. STANDARDS
- THE CONTRACTOR SHALL SUPPLY ALL PLANTS IN QUANTITIES SUFFICIENT TO COMPLETE THE WORK SHOWN ON THE DRAWINGS AND LISTED IN THE PLANT LIST IN THE EVENT OF A DISCREPANCY BETWEEN QUANTITIES SHOWN IN THE PLANT LIST AND THOSE REQUIRED BY THE DRAWINGS, THE LARGER NUMBER SHALL APPLY.
- ALL PLANTS SHALL BE APPROVED PRIOR TO INSTALLATION AND SHALL BE LOCATED ON SITE BY THE CONTRACTOR FOR THE APPROVAL OF THE LANDSCAPE ARCHITECT. ANY INSTALLATIONS WHICH WERE NOT APPROVED BY THE LANDSCAPE ARCHITECT AND WHICH ARE SUBSEQUENTLY REQUESTED TO BE MOVED WILL BE DONE AT THE CONTRACTOR'S EXPENSE.
- PRECISE LOCATION OF ITEMS NOT DIMENSIONED ON THE PLAN ARE TO BE FIELD STAKED BY THE CONTRACTOR AND SHALL BE SUBJECT TO THE REQUIREMENTS SPECIFIED IN THE PREVIOUS NOTE.
- ALL SHRUB MASSINGS AND TREE PITS SHALL BE MULCHED TO A DEPTH OF 3" WITH MULCH.
- TREES SHALL NOT BE STAKED UNLESS OTHERWISE NOTED.
- THE CONTRACTOR IS RESPONSIBLE FOR ANY DAMAGED VEGETATION AND SHALL REPLACE OR REPAIR ANY DAMAGED MATERIAL, AT HIS OWN EXPENSE. THE CONTRACTOR SHALL CONTACT "DIG-SAFE" AT 811 PRIOR TO CONSTRUCTION.
- ALL SHRUB AND GROUND COVER PLANTING AREAS SHALL HAVE CONTINUOUS BEDS OF TOPSOIL 12" DEEP. ALL SOD AND HYDROSEED AREAS SHALL HAVE A MINIMUM TOPSOIL BED OF 6".
- THE CONTRACTOR IS RESPONSIBLE FOR LOCATING ALL UTILITIES IN THE FIELD, WHERE PLANT MATERIAL MAY INTERFERE WITH UTILITIES, THE CONTRACTOR SHALL NOTIFY THE LANDSCAPE ARCHITECT TO COORDINATE THEIR INSTALLATION.
- FOR PLANTING SOIL MIX, SEE SPECIFICATIONS OR PLANTING DETAILS.
- ALL EXISTING RILL, GULLY OR CHANNEL EROSION SHALL BE FILLED WITH APPROPRIATE BACKFILL MATERIAL, FINE RAKED, SCARIFIED AND STABILIZED WITH APPROPRIATE VEGETATIVE MATERIAL AND / OR APPROPRIATE SEDIMENTATION AND EROSION CONTROL MEASURES.
- ADJUSTMENTS IN THE LOCATION OF THE PROPOSED PLANT MATERIAL AS A RESULT OF EXISTING VEGETATION TO REMAIN SHALL BE APPROVED BY THE LANDSCAPE ARCHITECT PRIOR TO INSTALLATION.
- THE CONTRACTOR IS RESPONSIBLE FOR ALL MAINTENANCE REPAIR AND REPLACEMENT OF PLANT MATERIAL, AS REQUIRED, FOR THE DURATION OF THE PROJECT AND SUBSEQUENT WARRANTY PERIOD.
- PLANTINGS INSTALLED IN THE DRY SUMMER MONTHS AND / OR LAWN SEEDED OUT OF SPRING OR FALL PERIODS, IF ALLOWED BY OWNER, WILL REQUIRE AGGRESSIVE IRRIGATION PROGRAMS AT THE CONTRACTOR'S EXPENSE, UNLESS OTHERWISE DIRECTED BY THE OWNER.
- UPON COMPLETION OF PLANTING, REMOVE FROM SITE ALL EXCESS SOIL, MULCH, AND MATERIALS AND DEBRIS RESULTING FROM WORK OPERATIONS. CLEAN UP SHOULD BE COMPLETED AT THE END OF EACH WORKING DAY. RESTORE TO ORIGINAL CONDITIONS ALL DAMAGED PAVEMENTS, PLANTING AREAS, STRUCTURES AND LAWN AREAS RESULTING FROM LANDSCAPING OPERATIONS.
- CONTRACTOR SHALL SURVEY, LOCATE, AND PROTECT ALL TREES WITHIN AREAS SHOWN AS "EXISTING VEGETATION TO REMAIN" WITHIN THE DEVELOPMENT ENVELOPE FOR REVIEW BY L.A. PRIOR TO CLEARING OPERATIONS.
- CONTRACTOR TO RESEED ALL DISTURBED AREAS.

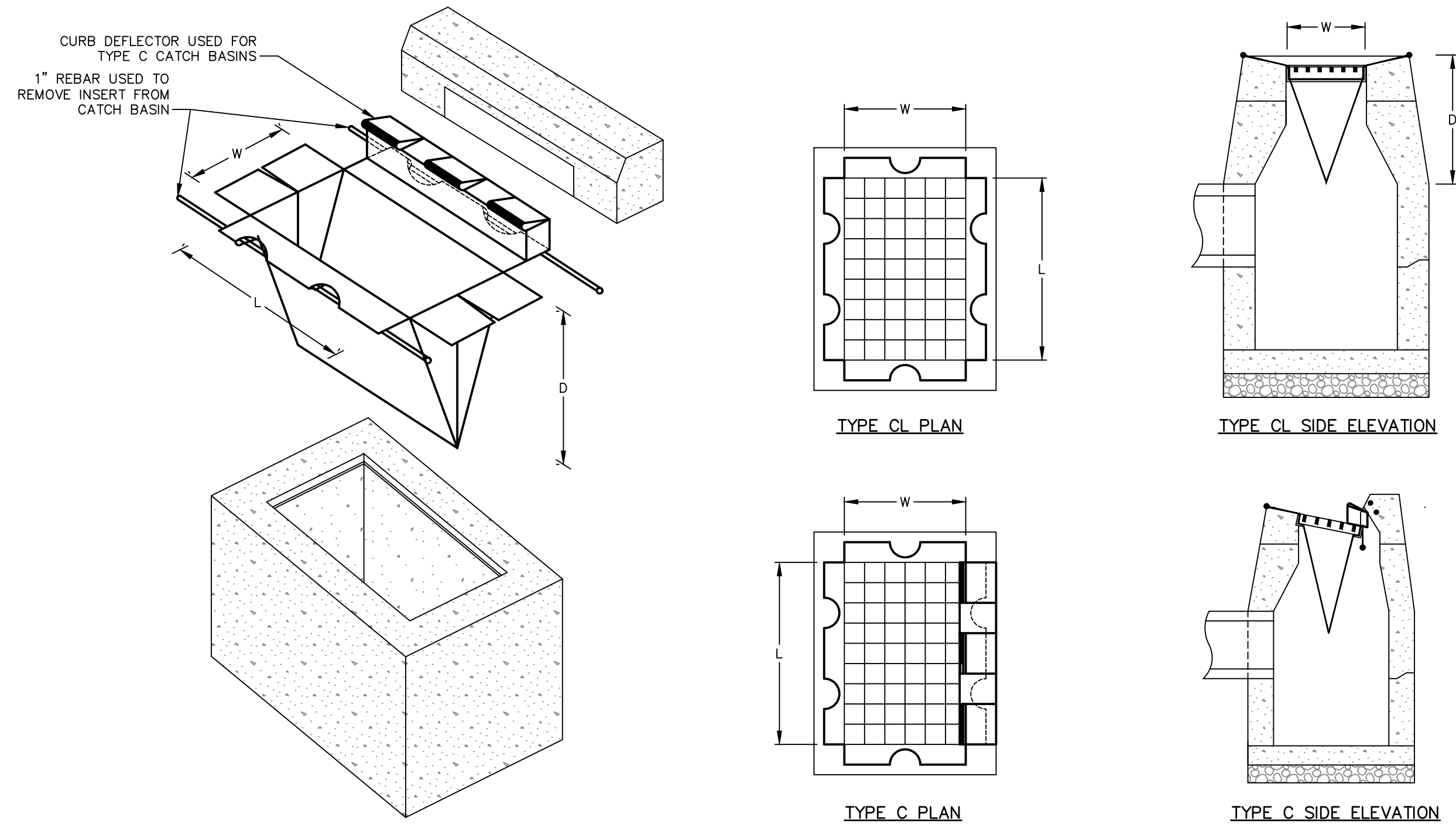
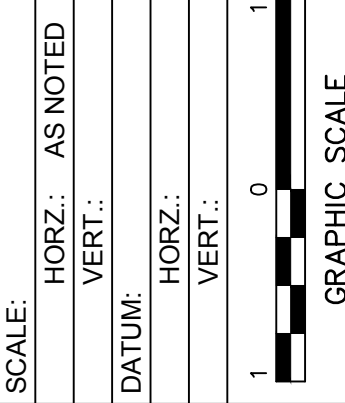
<p>UNION TWIST, INC.                  LANDSCAPE PLAN                  1158 BEACON STREET                  NEWTON, MASSACHUSETTS</p>	<p>SCALE: HORIZ.: 1" = 10'                  VERT.: 1" = 10'                  DATUM: NAD 83                  HORIZ.: 1" = 10'                  VERT.: 1" = 10'</p> <p>GRAPHIC SCALE</p>	<p>DESIGNER REVIEWER</p>
<p><b>FUSS &amp; O'NEILL</b>                  108 MYRTLE STREET, SUITE 502                  GAITHERSBURG, MD 20878                  www.fandob.com</p>	<p>PROJECT No.: 20190241.A30                  DATE: 10/23/2019</p>	<p>1. DATE</p>
<p><b>LP-101</b></p>		<p>No. DESCRIPTION</p>




SLOPE	SPACING
<1%	300 FEET
1%-3%	200 FEET
3%-5%	150 FEET
>5%	100 FEET

- NOTES:**
1. FILTER MEDIA™ FILL TO MEET APPLICATION REQUIREMENTS.
  2. COMPOST MATERIAL TO BE DISPERSED ON SITE, AS DETERMINED BY ENGINEER.
  3. SLOPE SPACING BASED ON "MASSACHUSETTS EROSION AND SEDIMENT CONTROL GUIDELINES FOR URBAN AND SUBURBAN AREAS" FOR TEMPORARY DIVERSIONS.

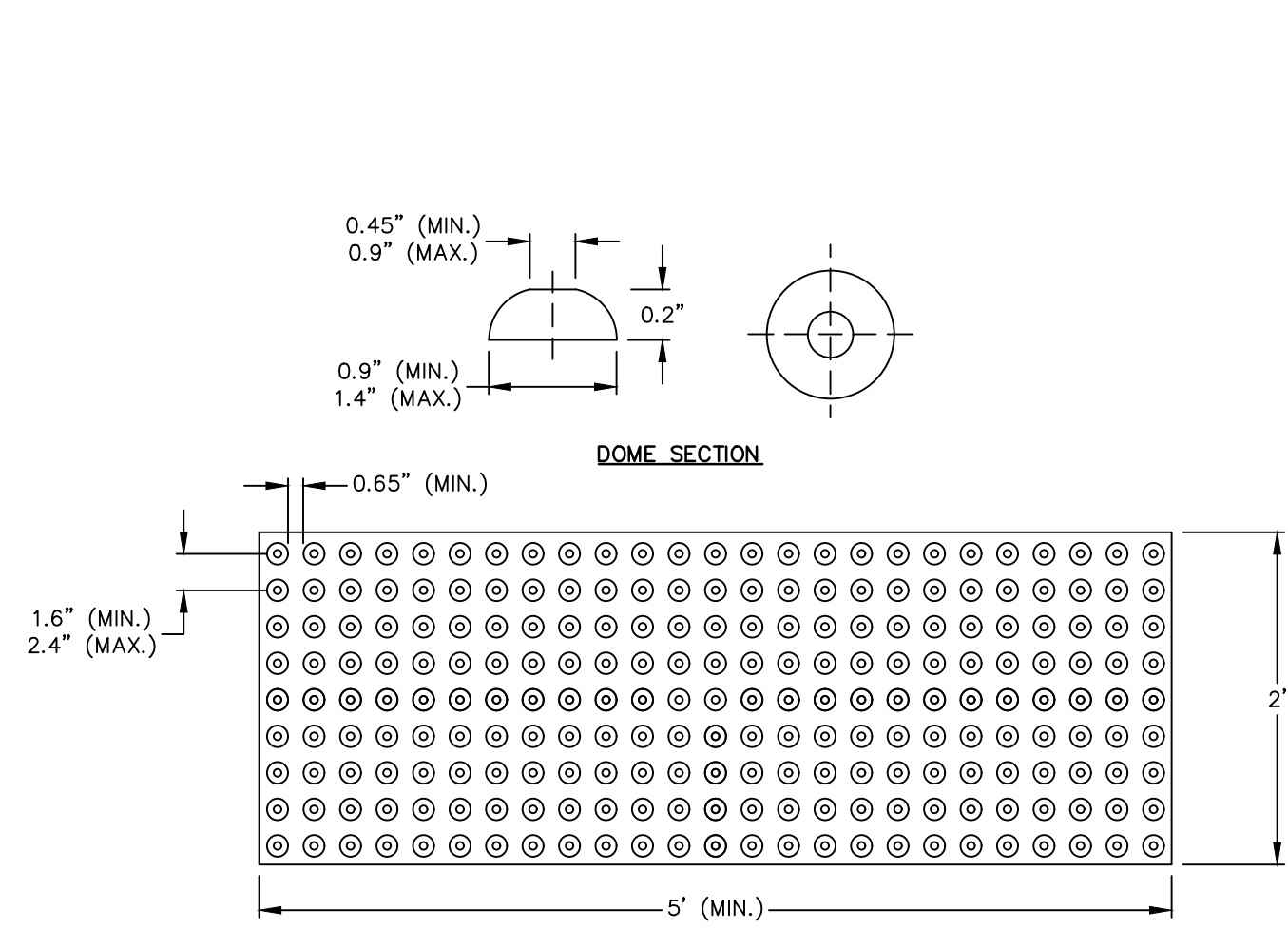
**COMPOST FILTER SOCK**  
 SCALE: N.T.S.



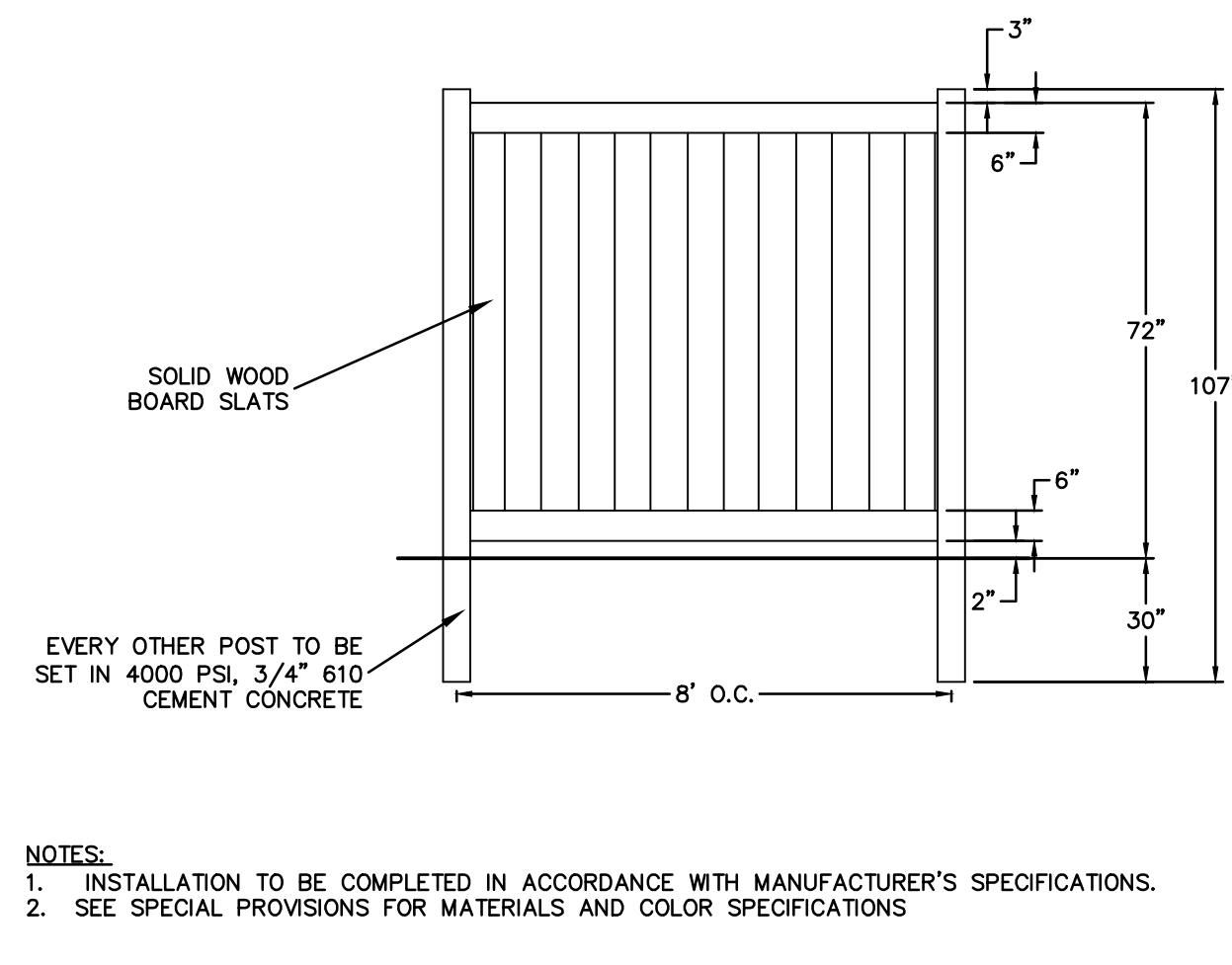
**STORMWATER INLET PROTECTION**  
 SCALE: N.T.S.

 <b>FUSS &amp; O'NEILL</b> 108 MYRTLE STREET, SUITE 502 NEWTON, MA 02459 (617) 552-4675 www.fandn.com	UNION TWIST, INC. EROSION AND SEDIMENT CONTROL DETAILS 1158 BEACON STREET NEWTON, MASSACHUSETTS	PROJ. No.: 20190241.A30 DATE: 10/23/2019	CD-501	No. 1. DATE:	DESCRIPTION:	DESIGNER:	REVIEWER:

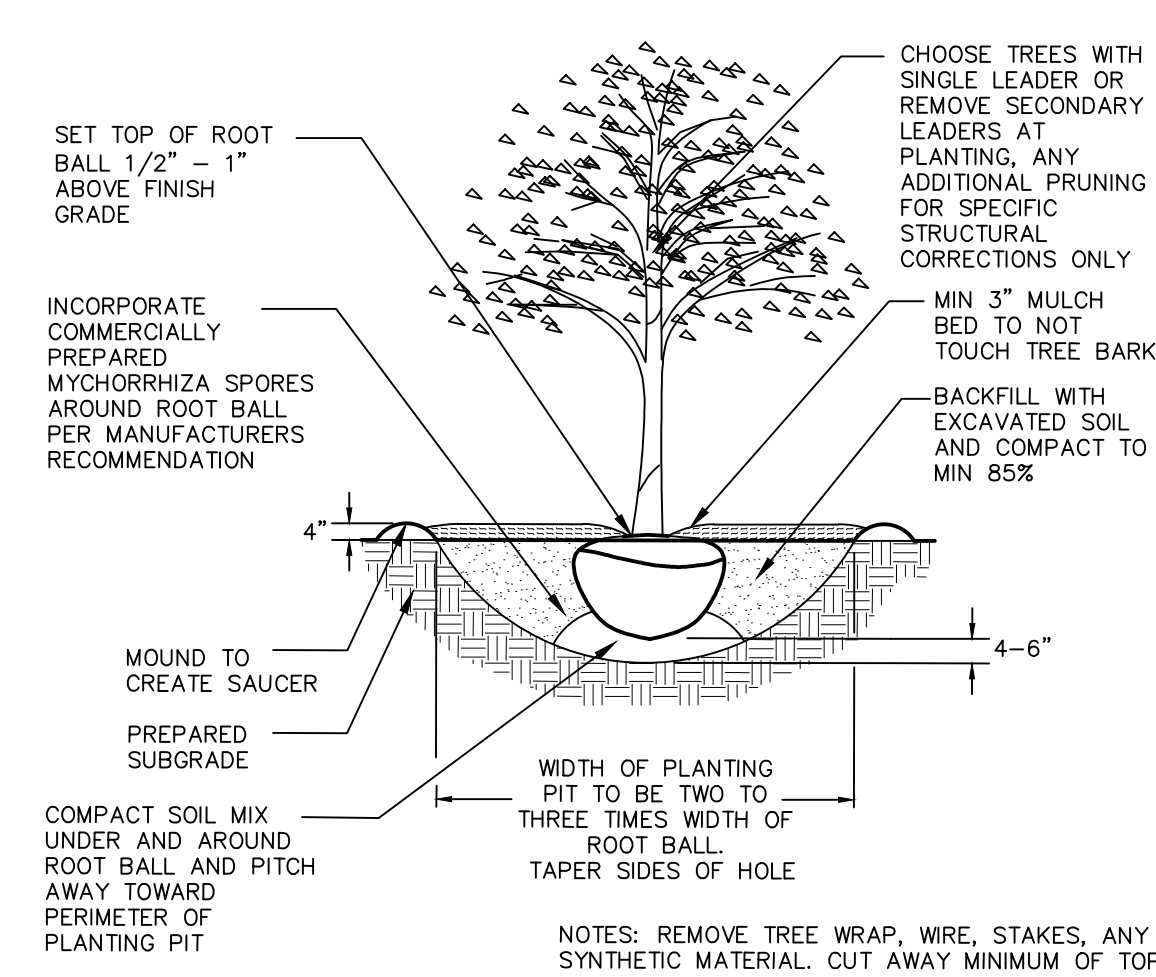




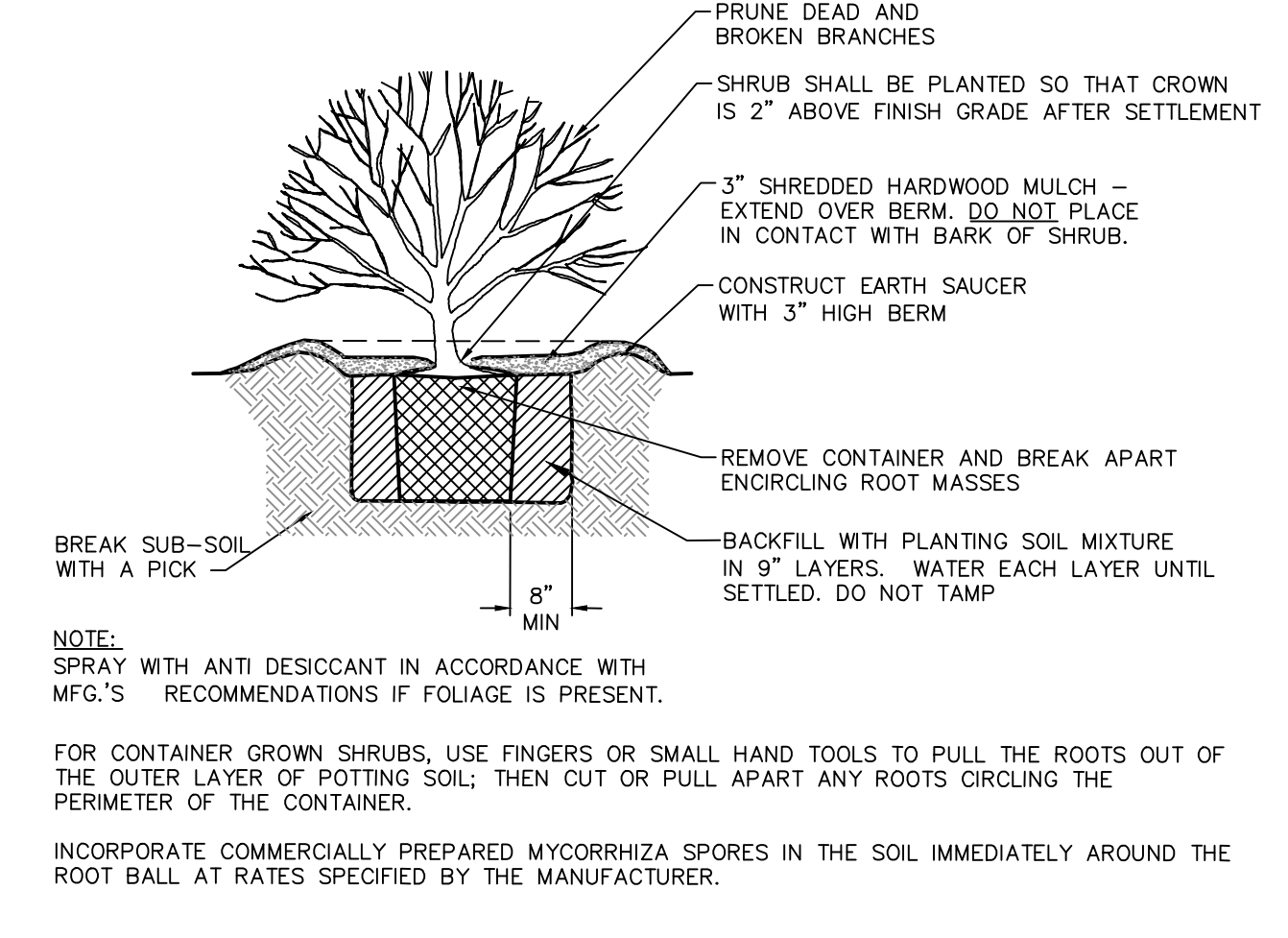
**DETECTABLE WARNING STRIP**  
SCALE: NOT TO SCALE



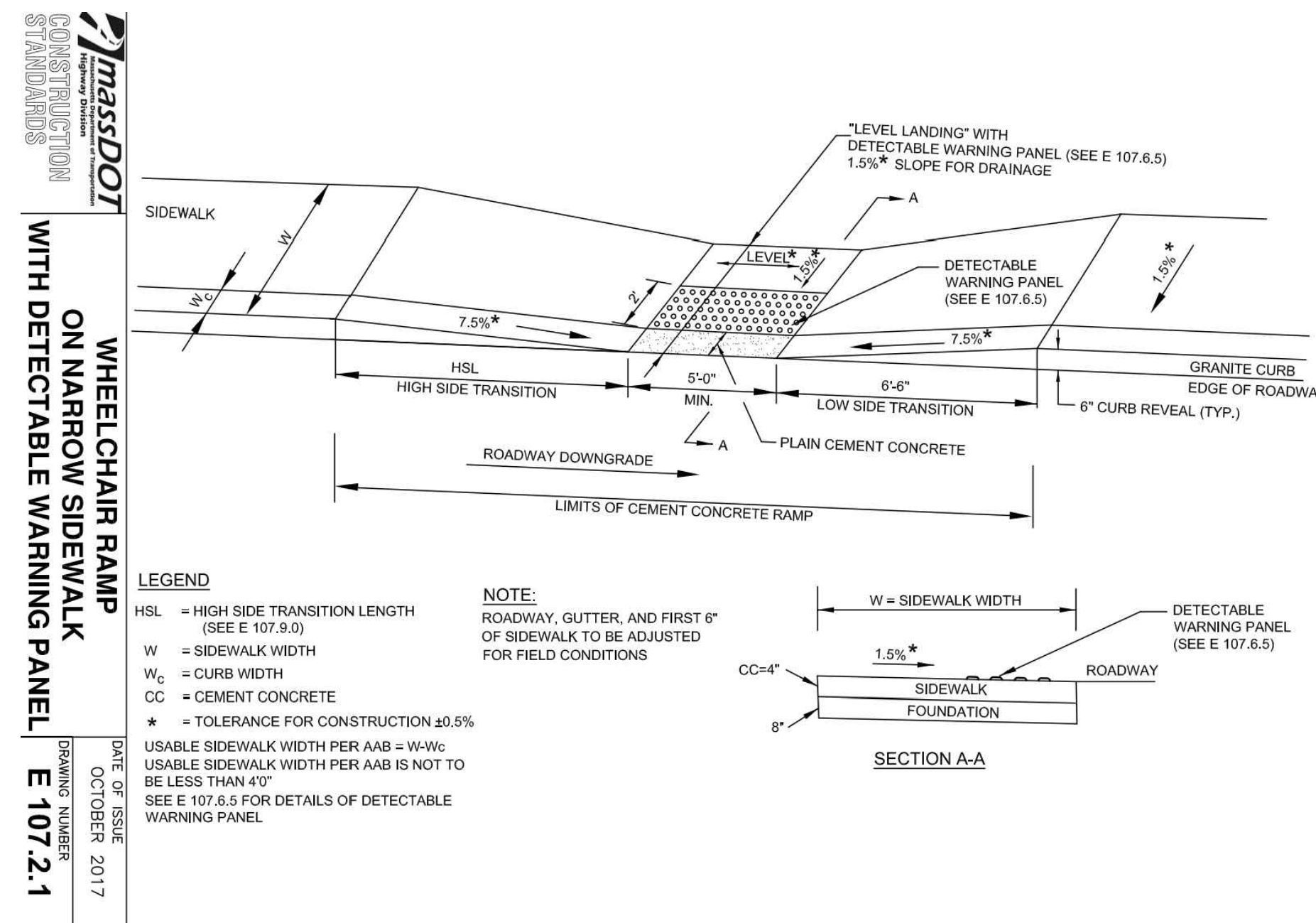
**STOCKADE FENCE**  
SCALE: N.T.S.



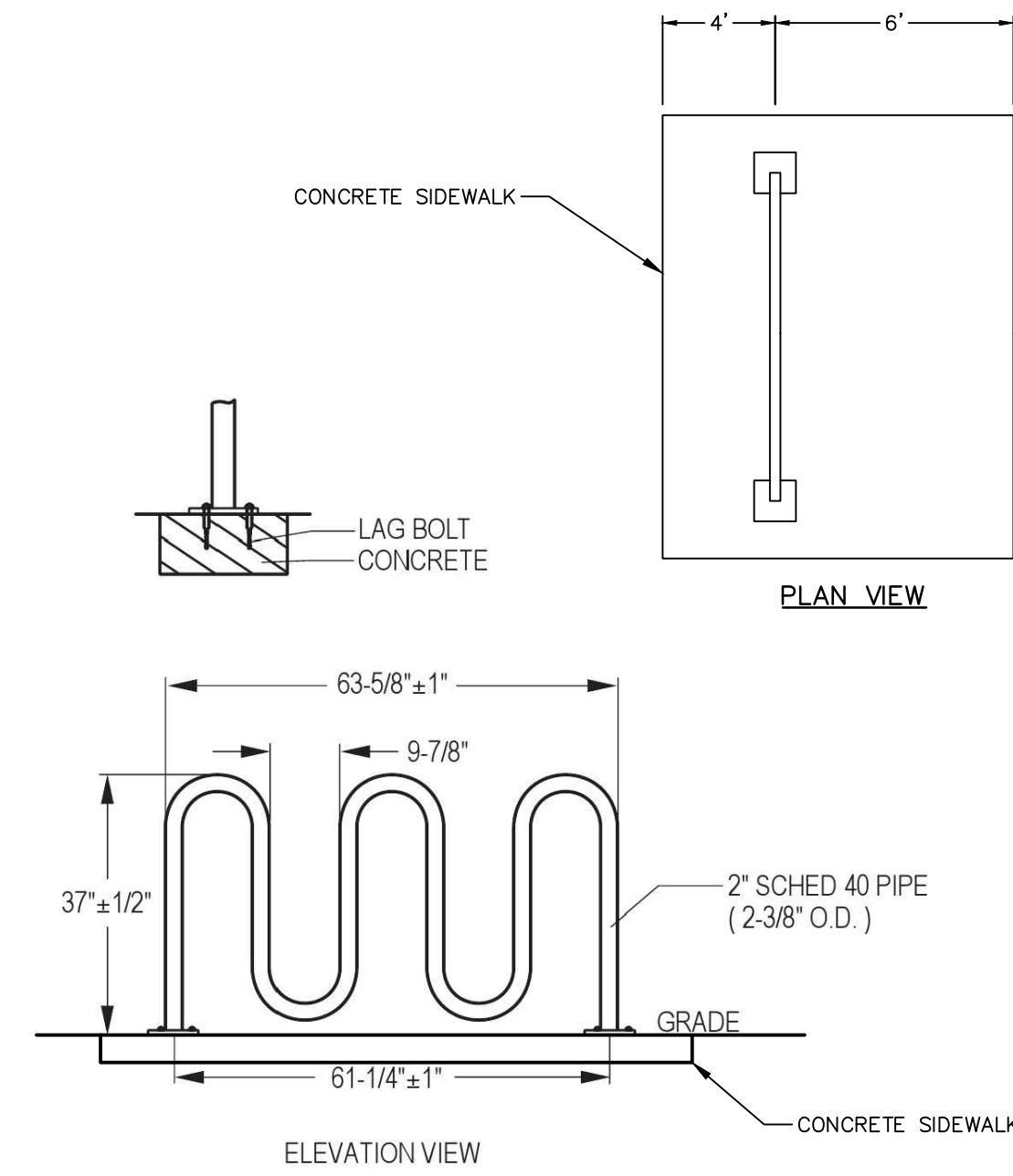
**TREE PLANTING**  
SCALE: N.T.S.



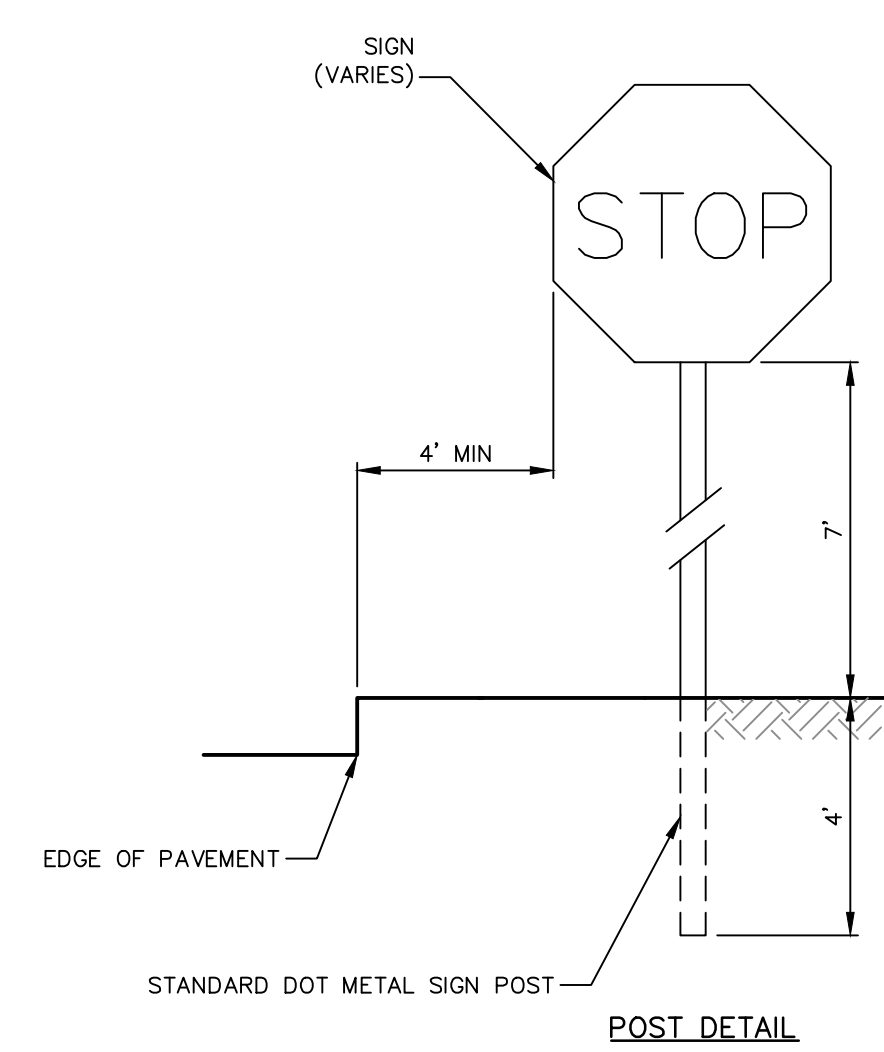
**SHRUB PLANTING DETAIL FOR CONTAINERIZED SHRUBS**  
SCALE: N.T.S.



**ADA RAMP DETAIL**  
SCALE: N.T.S.



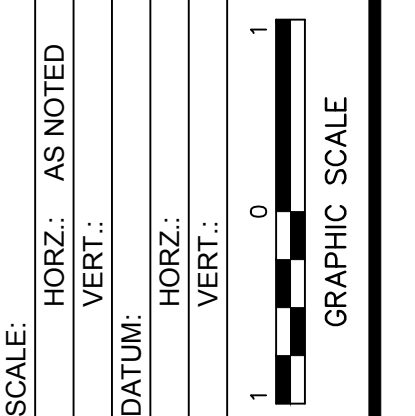
**BIKE RACK**  
SCALE: N.T.S.



**SIGNS**  
SCALE: N.T.S.

SIGN GRAPHIC	SIGN NAME	SIZE	MUTCD REFERENCE
	ACCESSIBLE PARKING	12"x18"	R7-8
	VAN ACCESSIBLE	18"x9"	R7-BP
	DO NOT ENTER SIGN	24"x24"	R5-1
	EXIT SIGN WITH RIGHT ARROW	24"x24"	N/A
	ENTER ONLY SIGN	24"x24"	N/A

No.	DATE	DESCRIPTION	DESIGNER	REVIEWER
1.				



**FUSS & O'NEILL**  
108 MYRTLE STREET, SUITE 502  
NEWTON, MA 02459  
617.285.4675  
www.fandob.com

UNION TWIST, INC.  
SITE DETAILS  
1158 BEACON STREET  
NEWTON, MASSACHUSETTS

PROJ. No.: 20190241.A30  
DATE: 10/23/2019

**CD-503**

File Path: J:\DWG\2019\0241\A30\Civil\Plan\20190241.A30\_DET01.dwg Layout: CD-503 Plotted: Wed, October 23, 2019 - 8:59 AM User: jvaldez  
MS VIEW: LAYER STATE: PLOTTER: DWG TO PDF.PC3 CTB File: FO.STB