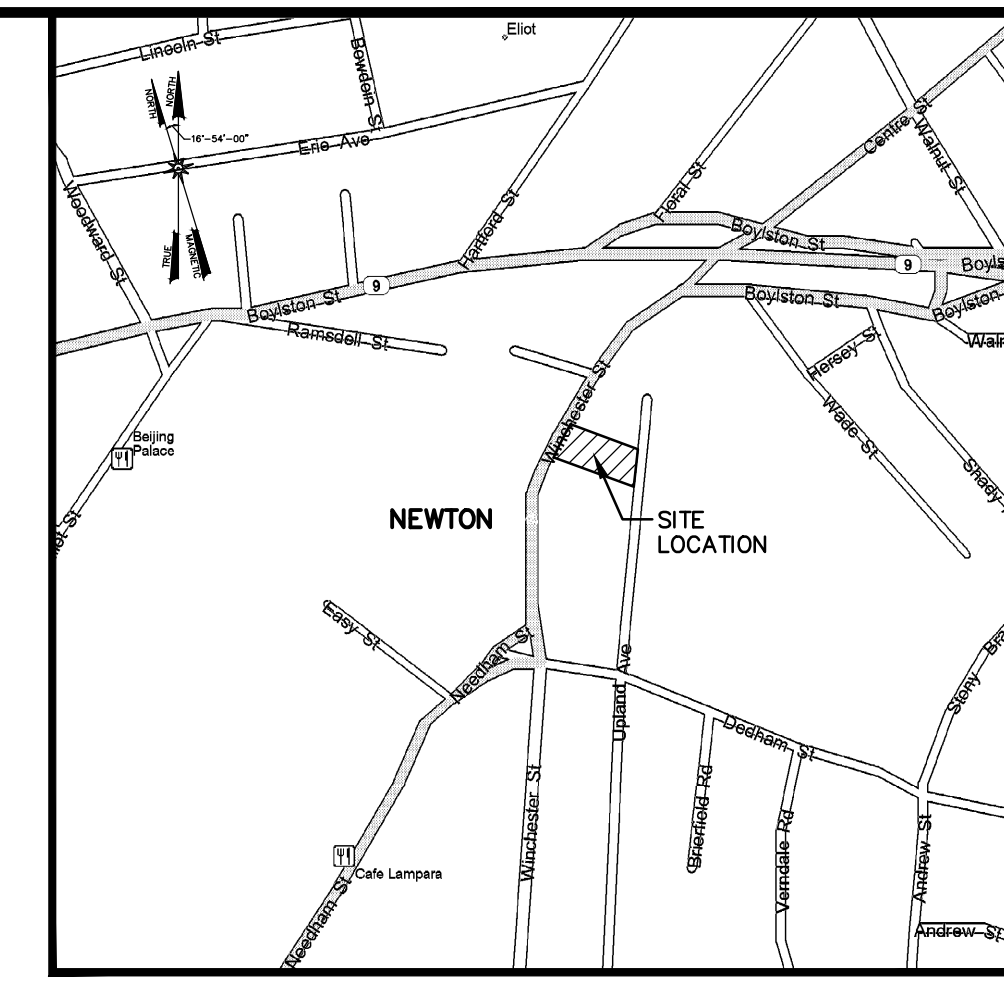
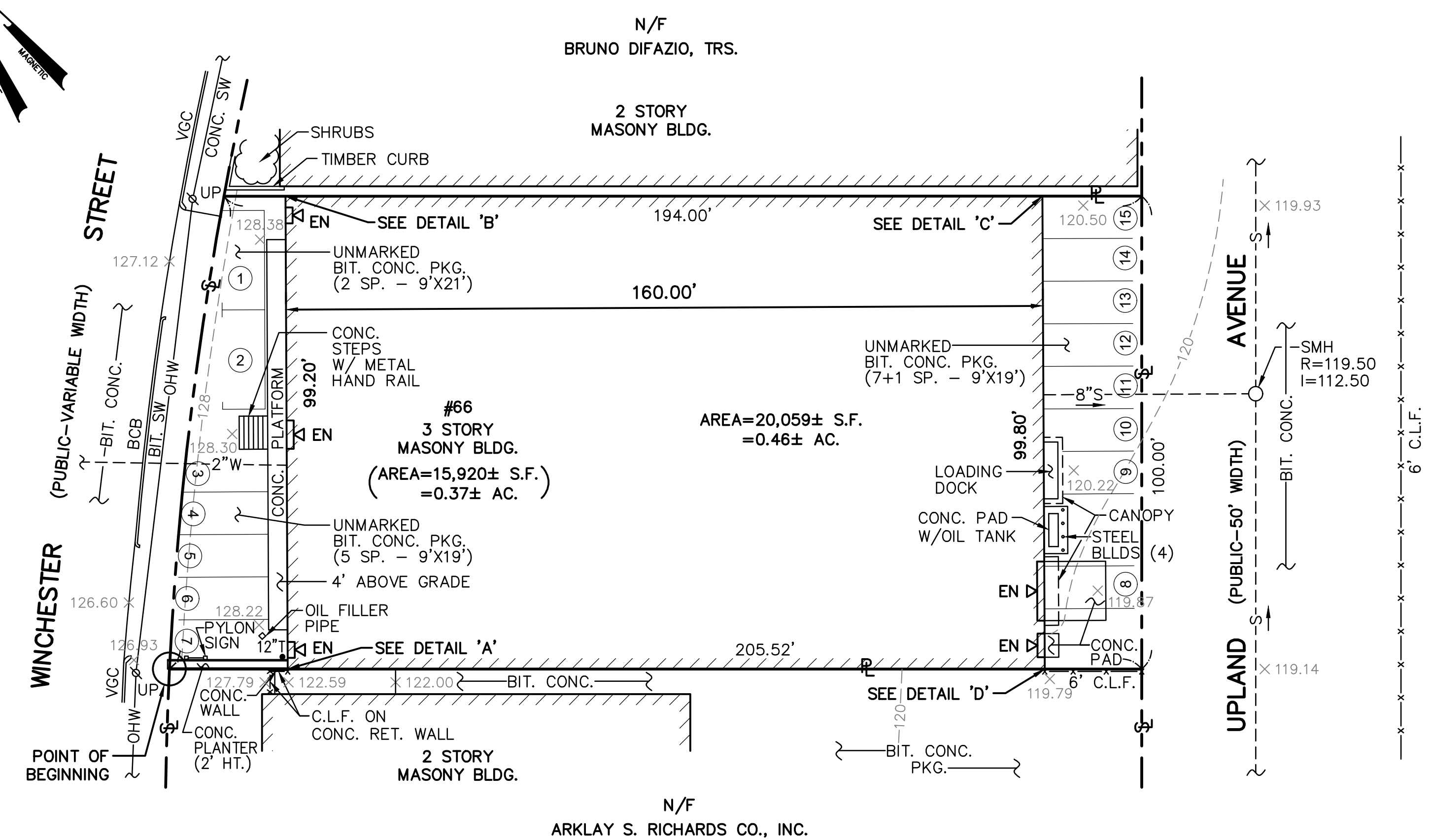
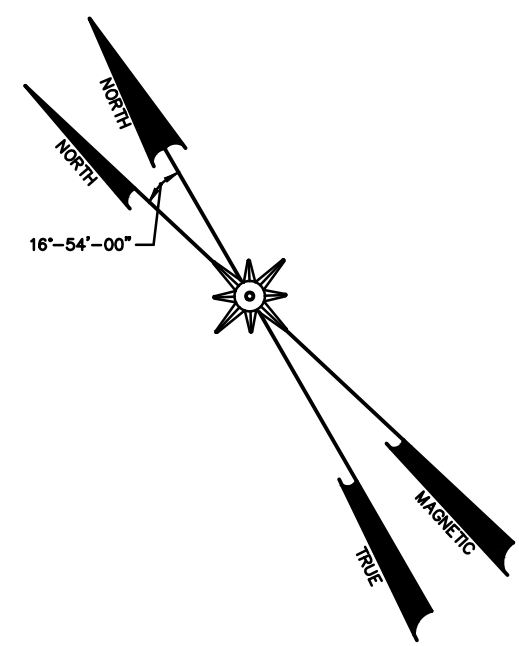


LEGEND

- P — PROPERTY LINE
- S — STREET LINE
- - - EASEMENT LINE
- - - FLOOD LIMIT LINE
- PCC — PRECAST CONCRETE CURB
- BCC — BIT. CONC. CURB
- EOP — EDGE OF PAVEMENT
- EOG — EDGE OF GRASS
- x — x — CHAIN LINK FENCE
- o — o — WOOD FENCE
- - - S — SANITARY SEWER
- - - D — STORM DRAIN
- - - RD — ROOF DRAIN LINE
- - - W — WATER LINE
- - - FP — FIRE PROTECTION LINE
- - - G — GAS LINE
- - - E — ELECTRIC LINE
- - - T — TELEPHONE LINE
- OHW — OVERHEAD WIRE
- SMH — SEWER MANHOLE
- DMH — DRAIN MANHOLE
- RD — ROOF DRAIN
- DS — DOWNSPOUT
- WMH — WATER MANHOLE
- TMH — TELEPHONE MANHOLE
- MH — MANHOLE
- C.O. — CLEAN OUT
- CB — CATCH BASIN
- TS — TRAFFIC SIGNAL
- UP — UTILITY POLE
- LP — LIGHT POLE
- WG — WATER GATE
- HYD. — HYDRANT
- FA — FIRE ALARM
- HVAC — HEATING, VENTILATION AND AIR CONDITIONING SYSTEM
- GG — GAS GATE
- GM — GAS METER
- SP — SIGN POST
- BLLDS — BOLLARDS
- SB — STONE BOUND
- L/A — LANDSCAPED AREA W/ PLANTINGS
- R = — RIM ELEVATION
- I — INVERT ELEVATION
- SHRUBS
- BIT CONC. — BITUMINOUS CONCRETE
- 6" T — TREE
- R — RADIUS
- L — LENGTH
- x 122.00 — SPOT GRADE
- - - 122 — CONTOUR
- ② — PARKING SPACE COUNT



LOCATION MAP
(NOT TO SCALE)

NOTES:

- 1) ZONE: MIXED USE 2 "MU-2"
 MINIMUM LOT SIZE: 10,000 Sq.Ft.
 MINIMUM LOT FRONTAGE: 80 ft.
 SETBACKS: Front 15.0 ft.
 Side 7.5 ft.
 Rear 0 ft.
 REFER TO THE CITY OF NEWTON ZONING ORDINANCE FOR VERIFICATION, ADDITIONAL RESTRICTIONS AND PERMITTED USES.
- 2) UNMARKED PARKING SPACES ON PREMISES: 15
- 3) LOT IS LOCATED IN FLOOD ZONE "X" (NO HAZARD)
 SEE FLOOD HAZARD MAP
 COMMUNITY PANEL NO. 25017C0554E DATED 6/4/2010
- 4) THE EXISTING BUILDING SHOWN ON THE SURVEY TRACT IS A PRE-EXISTING NON-CONFORMING USE.

ASSESSOR'S ID:

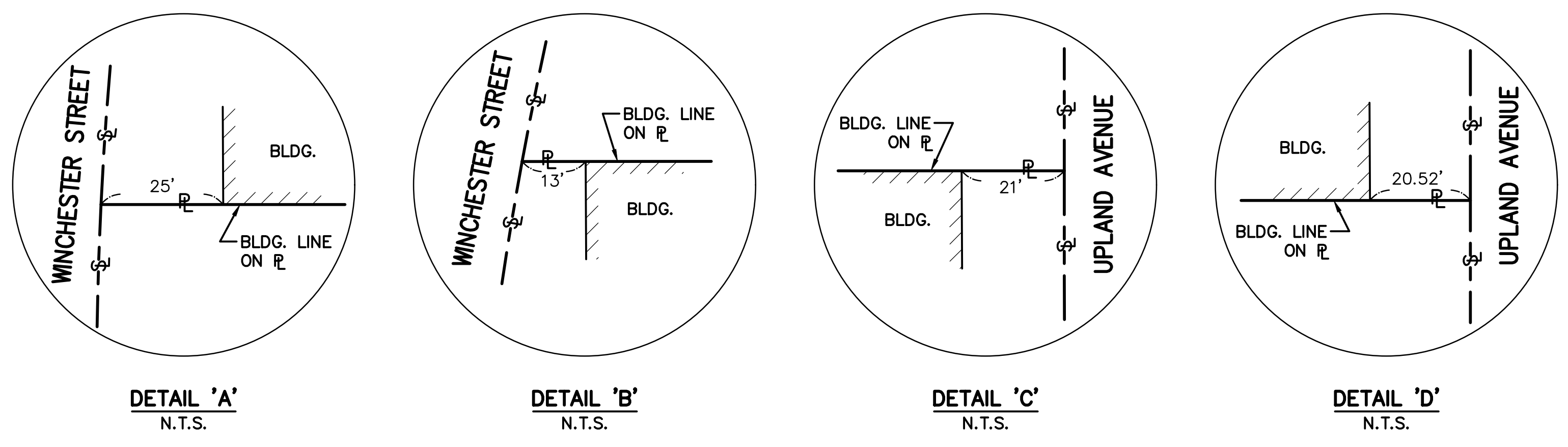
MAP 128NW
ID 830030046

DEED REFERENCES:

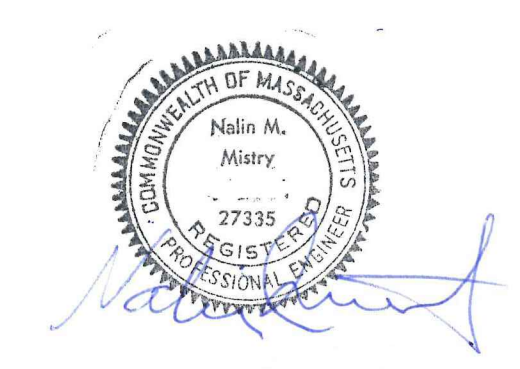
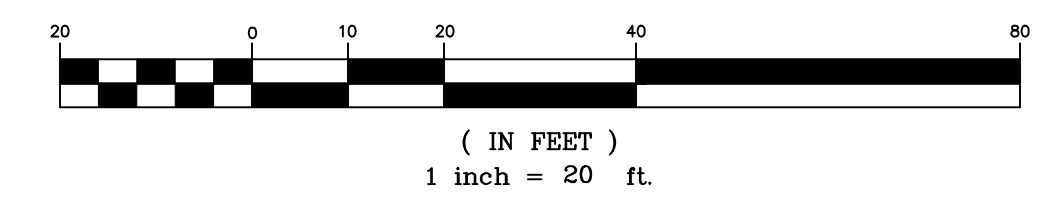
BOOK 25957, PAGE 015
BOOK 47002, PAGE 255

OWNER OF RECORD:

WINCHESTER 66 LLC
66 WINCHESTER STREET
NEWTON, MA 02461



GRAPHIC SCALE



SITE PLAN
66 WINCHESTER STREET NEWTON, MA
PREPARED FOR OLYMPIA FENCING CENTER, INC.
Mistry Associates, Inc. 315 Main Street Reading, MA 01867 TEL: 781-944-6400 FAX: 781-948-9908
SEPT. 25, 2019 SCALE: 1"=20'