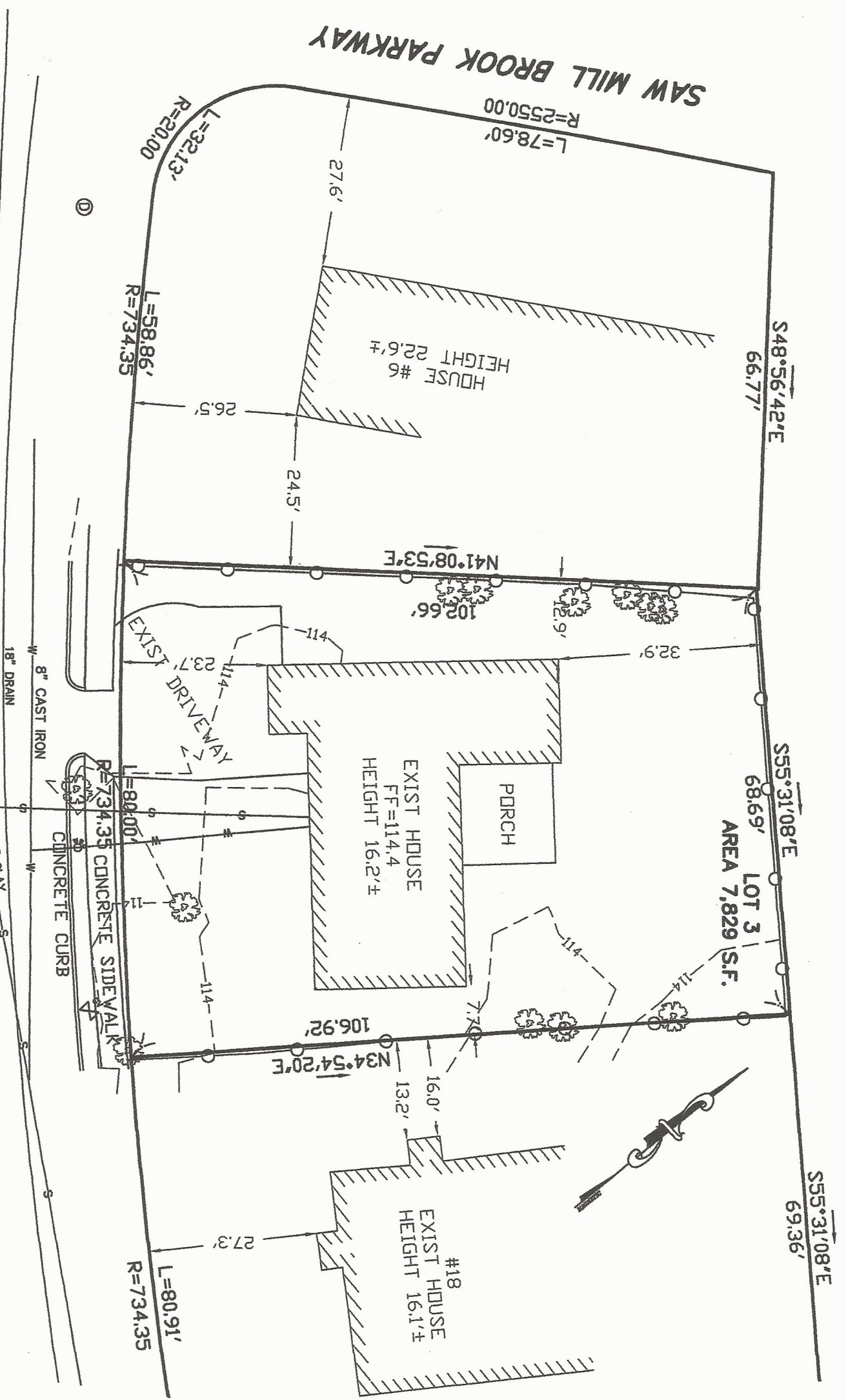


SAW MILL BROOK PARKWAY



ZONING - BUI DISTRICT (OLD)

TOTAL AREA 7,829 S.F. 100%
 LOT COVERAGE = 20.8%
 OPEN SPACE = 70.0%

ASSESSOR'S MAP 162SW
 SECTION 84
 BLOCK 15
 LOT 3
 NEIGHBOURHOOD 4D

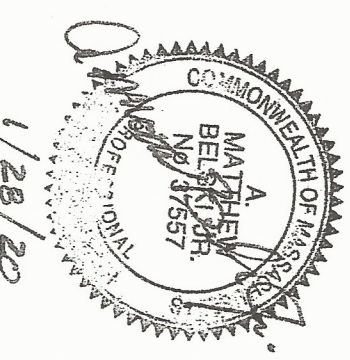
AVERAGE FRONT YARD SETBACK:
 #18 HANSON ROAD = 27.3'
 #6 SAW MILL BROOK PARKWAY 26.5'
 ALLOWED FRONT YARD SETBACK FOR #12
 HANSON ROAD = 26.9'

EXISTING CONDITIONS PLAN

12 HANSON ROAD
 NEWTON, MA 02459
 SCALE: 1"=20' DATE: JANUARY 20, 2020

REFERENCES:

MIDDLESEX SOUTH DISTRICT REGISTRY OF DEEDS,
 1. PLAN 20412 SHEET 1
 NOTE: THE DATUM IS CITY OF NEWTON BASE.



GRAPHIC SCALE

