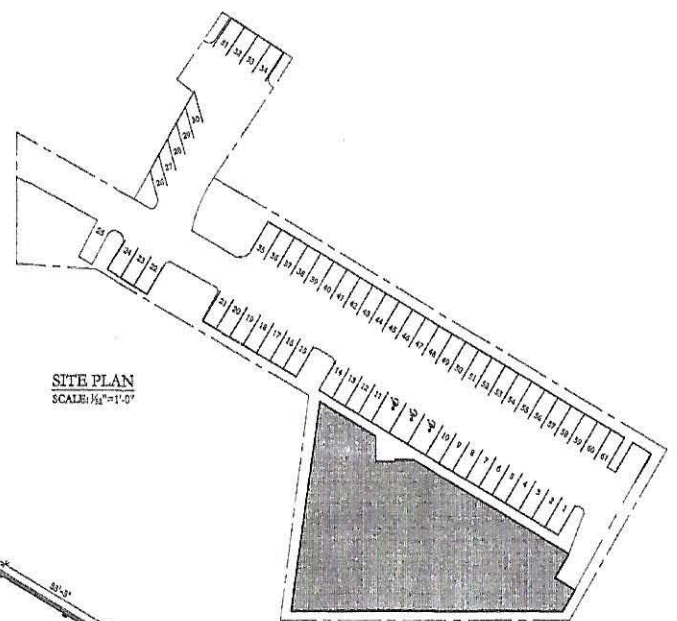
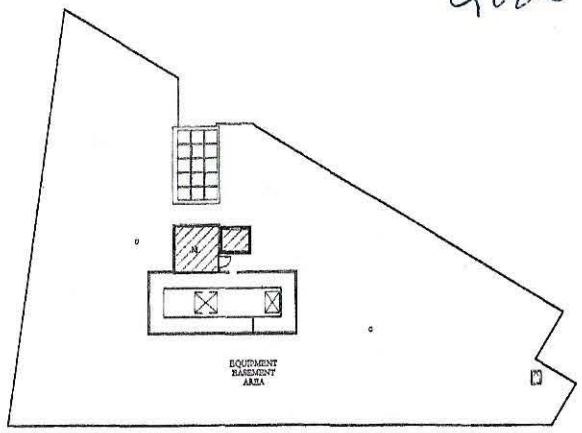


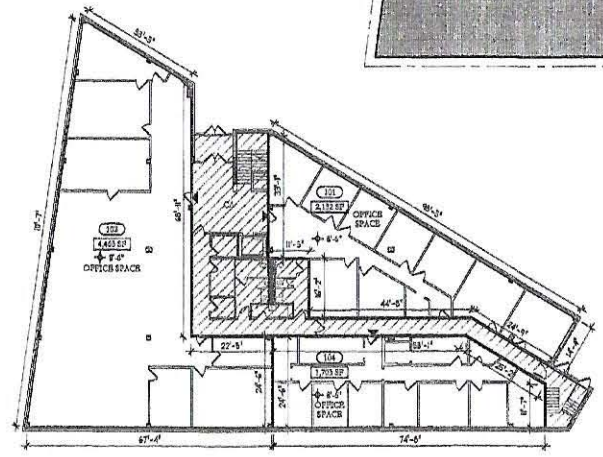
2005



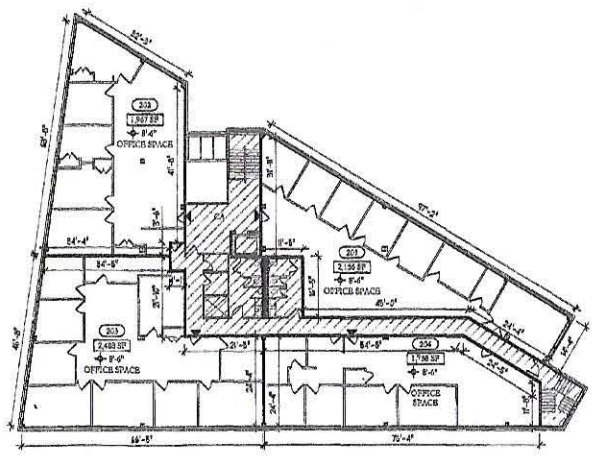
SITE PLAN
SCALE: 1/8"=1'-0"



ROOF PLAN
SCALE: 1/8"=1'-0"



FIRST FLOOR PLAN
SCALE: 1/8"=1'-0"



SECOND FLOOR PLAN
SCALE: 1/8"=1'-0"

PL # 1496 10-31-2005 2:53 P.M.



PRESIDENTS PLACE 1207
QUINCY MA 01919
TEL: 508-778-8150 FAX: 508-773-4352
www.wesslingarchitects.com

WHERE MEASUREMENTS ARE SHOWN, THE FIRST NUMBER IS IN FEET, THE SECOND NUMBER IS IN INCHES. 5'-6 INDICATES 5 FEET 6 INCHES. IF ONLY ONE MEASUREMENT IS SHOWN, IT IS IN INCHES. ROOM MEASUREMENTS ARE TAKEN FROM THE FACE OF STUD OR FACE OF MASONRY WALL.

CA-COMMON AREA
M-MECHANICAL

LEGEND	
	COMMON AREAS: NON-UNIT AREAS INSIDE BUILDING
	COMMON ELEMENTS: EXTERIOR BUILDING WALLS & INTERIOR WALLS BOUNDING UNITS
	UNIT DESIGNATION
	UNIT MAIN ENTRANCE
	CEILING HEIGHT FROM A POINT IN UNIT MEASURED FROM UPPER FACE OF FINISHED FLOOR TO UNDERSIDE OF PLASTER CEILING
	UNIT APPROXIMATE SQUARE FEET

I HEREBY CERTIFY THAT THE WITHIN SET OF PLANS OF THIS BUILDING LOCATED AT 450 LEXINGTON STREET, NEWTON, MASSACHUSETTS ACCURATELY DEPICTS THE LAYOUT, LOCATIONS, UNIT DESIGNATION, DIMENSIONS, APPROXIMATE AREAS, ENTRANCES AND COMMON AREAS OF THE UNITS OF ADDRESS AS BUILT AND IN EXISTENCE.

I CERTIFY THAT THIS PLAN HAS BEEN PREPARED IN CONFORMITY WITH THE RULES & REGULATIONS OF THE REGISTRY OF DEEDS, COMMONWEALTH OF MASSACHUSETTS

[Signature]
STUART J. WESSLING

[Signature]
DATE 10/31/05



I HEREBY CERTIFY THAT THE WITHIN PLANS SHOWS UNITS 101, 10A, 10B, 201, 202, 203 & 204 OF THE BUILDING LOCATED AT 450 LEXINGTON STREET, NEWTON, MASSACHUSETTS AND THEIR ADJOINING UNITS, AND THAT THEY FULLY AND ACCURATELY DEPICT THEIR LAYOUTS, LOCATIONS, UNIT DESIGNATION, DIMENSIONS, APPROXIMATE AREAS, ENTRANCES AND COMMON AREAS OF THE UNITS OF 450 LEXINGTON STREET, AS BUILT AND IN EXISTENCE.

PROPERTY LINE SHOWN IS AN APPROXIMATE REPRESENTATION AND HAS NOT BEEN CERTIFIED BY A LICENSED SURVEYOR

[Signature]
STUART J. WESSLING

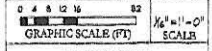
[Signature]
DATE 10/31/05

Middlesex Registry of Deeds,
Southern District
Cambridge, Massachusetts
Plan No. 1496 of 2005
Rec'd 10-31-2005
at 2:53 P.M.

Attest
[Signature]
Register

450 LEXINGTON STREET
CONDOMINIUM

450 LEXINGTON STREET
NEWTON
MIDDLESEX COUNTY
MASSACHUSETTS

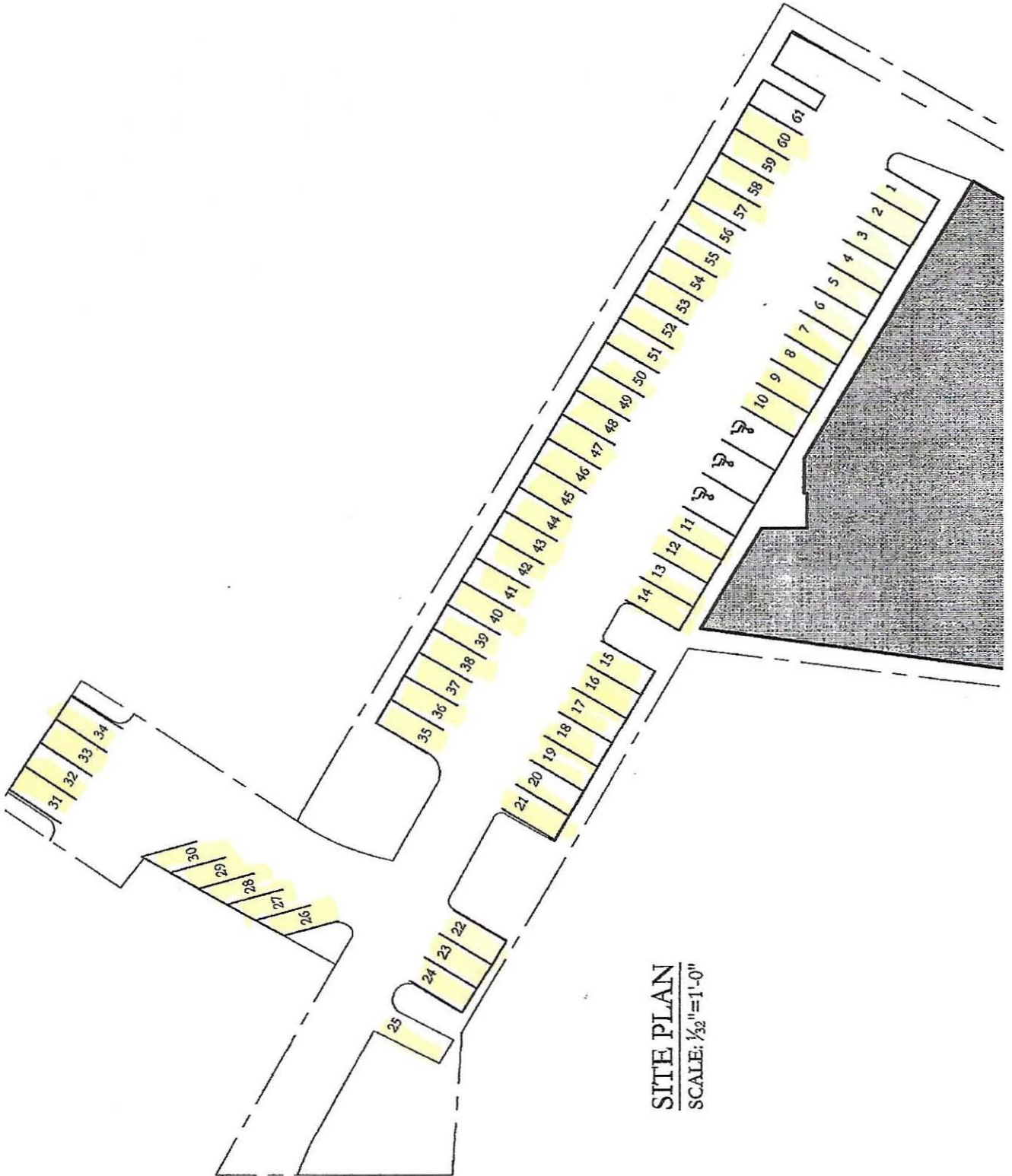


GRAPHIC SCALE (FT) 1/8"=1'-0" SCALE

DRAWING 1 OF 1

1496

2005



SITE PLAN
SCALE: 1/32" = 1'-0"

*