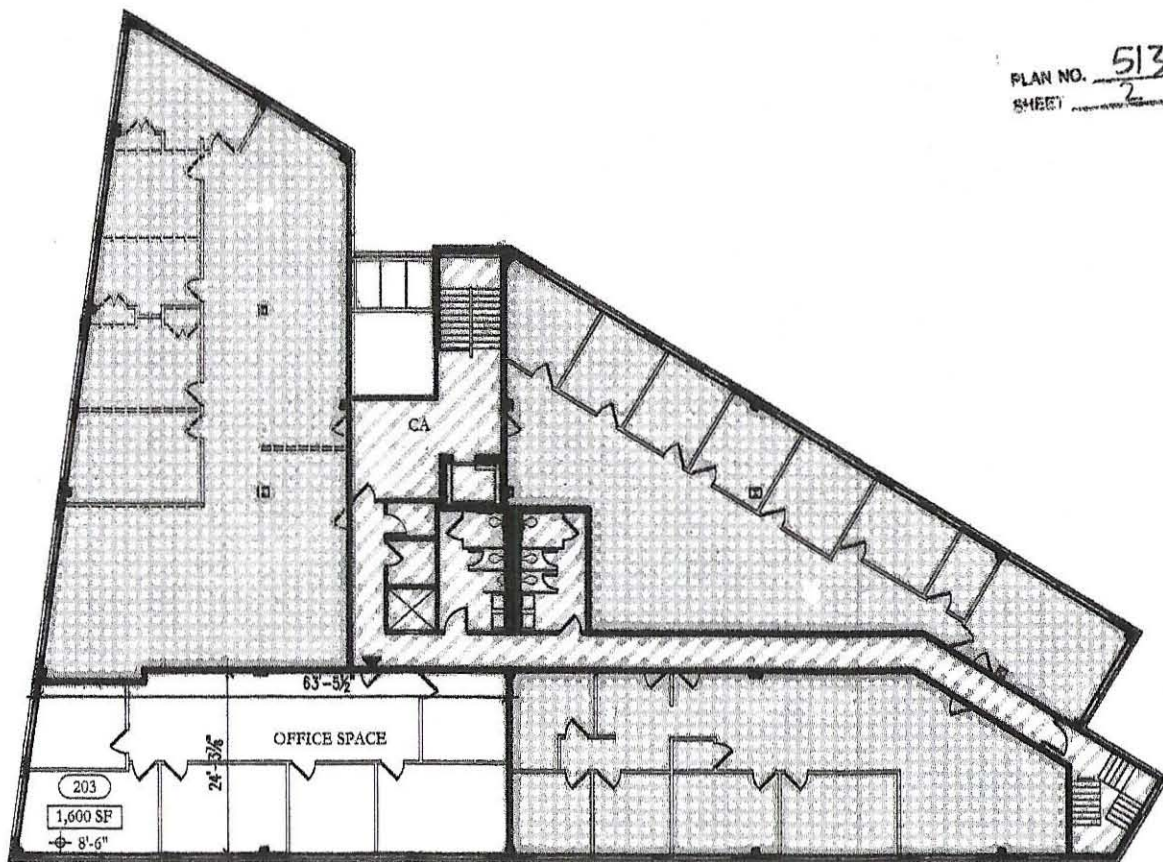


PLAN NO. 513 OF 2010
 SHEET 2 OF 2



LEGEND

- COMMON AREAS: NON UNIT AREAS INSIDE BUILDING
- COMMON ELEMENTS: EXTERIOR BUILDING WALLS, INTERIOR WALLS BOUNDING UNITS AND COMMON AREAS.
- ADJACENT UNIT
- ## UNIT DESIGNATION
- UNIT MAIN ENTRANCE
- + CEILING HEIGHT FROM A POINT IN UNIT MEASURED FROM UPPER FACE OF FINISHED FLOOR TO UNDERSIDE OF PLASTER CEILING
- SF UNIT APPROXIMATE SQUARE FOOT

ARCHITECT:

WESSLING ARCHITECTS
 MA-CR-0004

PRESIDENTS PLACE
 1200 HANCOCK ST.
 SUITE 810N
 QUINCY, MA 02169
 TEL. 617-773-8100
 FAX 617-773-4902
 info@wesslingarch.com
 www.wesslingarch.com

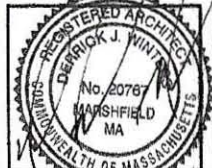
PROJECT: 10105

UNIT 203 - SECOND FLOOR
 450 LEXINGTON STREET CONDOMINIUM
 NEWTON
 MIDDLESEX COUNTY
 MASSACHUSETTS

I CERTIFY THAT THE WITHIN PLANS SHOWS UNIT 203 OF THE BUILDING LOCATED AT 450 LEXINGTON STREET, NEWTON, MASSACHUSETTS, AND THAT THEY FULLY AND ACCURATELY DEPICT ITS LAYOUTS, LOCATIONS, UNIT DESIGNATION, DIMENSIONS, APPROXIMATE AREAS, ENTRANCES AND COMMON AREAS AS BUILT AND IN EXISTENCE.

I CERTIFY THAT THIS PLAN HAS BEEN PREPARED WITH THE RULES & REGULATIONS OF THE REGISTRY OF DEEDS, COMMONWEALTH OF MASSACHUSETTS.

[Signature]



7/15/10 DATE
1/16" = 1'-0" SCALE
0 2 4 8 12 16 GRAPHIC SCALE