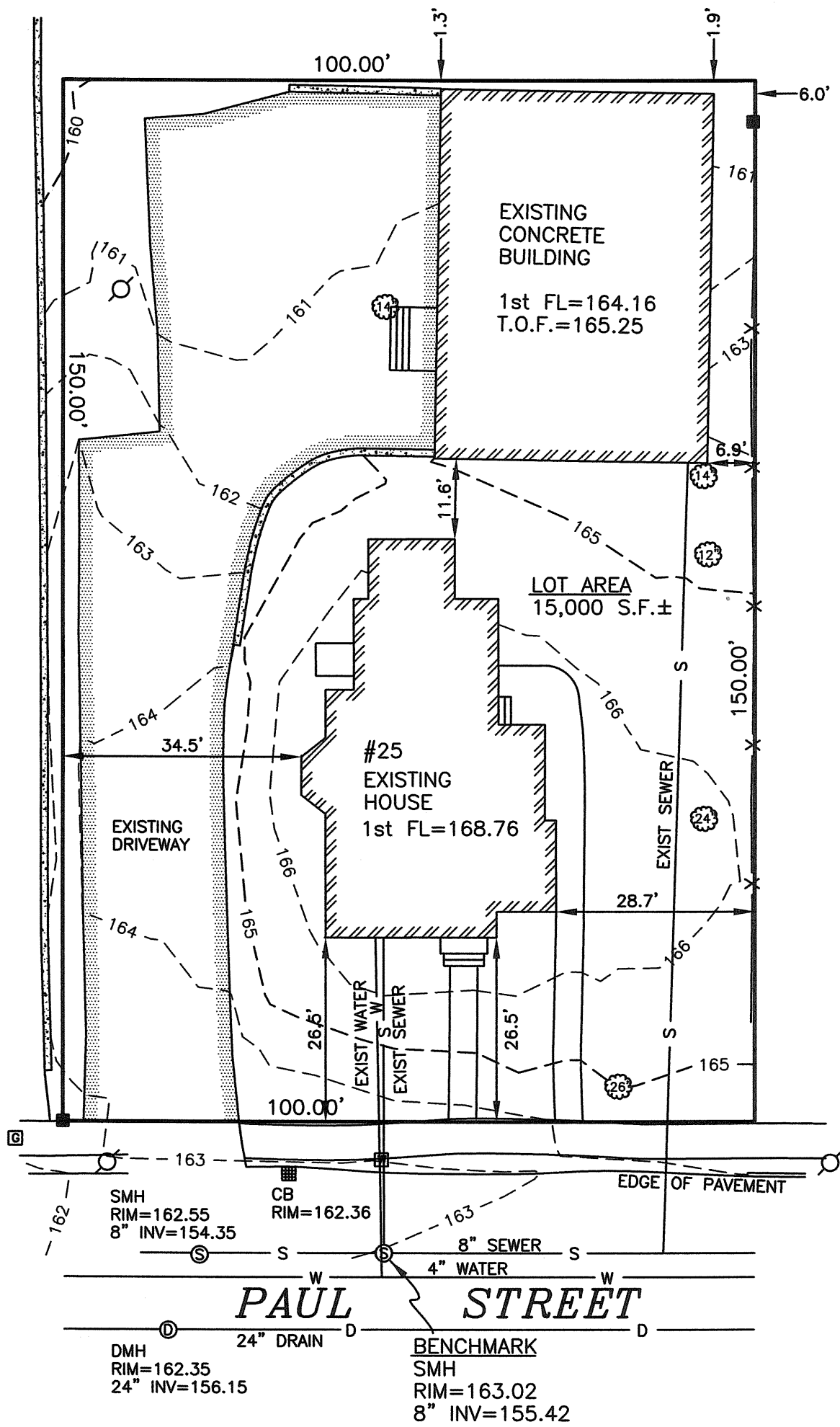
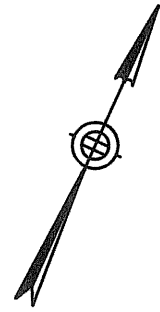


M.B.T.A.



- LEGEND**
- LIGHT POLE
 - GROUND LIGHT
 - UTILITY POLE
 - WATER GATE
 - HYDRANT
 - GAS GATE
 - ELECTRIC MANHOLE
 - SEWER MANHOLE
 - DRAIN MANHOLE
 - TELEPHONE MANHOLE
 - CATCH BASIN
 - 71.4 X SPOT ELEVATION
 - PROPOSED CONTOUR
 - EXISTING CONTOUR
 - DRAIN LINE
 - WATER LINE
 - SEWER LINE
 - GAS LINE
 - FENCE
 - RETAINING WALL
 - BOLLARD
 - HANDICAP SPACE
 - SIGN
 - 24" TREE

ZONING INFORMATION

ZONE: MR2
 PLAN DATED: JUNE 27, 1913
 DEED REFERENCE: BOOK 12904 PAGE 568

	EXISTING	PROPOSED	REQUIRED
BUILDINGS	3,622 S.F.	x S.F.	
STRUCTURES	3,622 S.F.	x S.F.	
DRIVE	4,259 S.F. ±	x S.F. ±	
	7,881 S.F. ±	x S.F. ±	
LOT COVERAGE	24.1%	x.x%	(30% MAX.)
OPEN SPACE	47% ±	x% ±	(50% MIN.)

ZONING COMPLIANCE DETERMINED BY MUNICIPALITY.
 AREAS FOR F.A.R. CALCULATION PROVIDED BY ARCHITECT.

ESTABLISHED 1916

EMB

EVERETT M. BROOKS CO.
 SURVEYORS & ENGINEERS

49 LEXINGTON STREET
 WEST NEWTON, MA 02465

(617) 527-8750
 info@everettbrooks.com

PLAN OF LAND IN
 NEWTON, MA

25 PAUL STREET
 EXISTING CONDITION

SCALE: 1 IN. = 20 FT.
 DATE: MARCH 12, 2019
 DRAWN: GAR
 CHECK: BB

PROJECT NO. 25768

