

MASSACHUSETTS DEPARTMENT OF TRANSPORTATION HIGHWAY DIVISION

NEWTON RT 128/ I-95 & GROVE STREET			
STATE	FED. AID PROJ. NO.	SHEET NO.	TOTAL SHEETS
MA	XXXX	1	7
PROJECT FILE NO.		607940	

RIVERSIDE MIXED USE DEVELOPMENT
TITLE & INDEX

PLAN OF
RT 128/ I-95 & GROVE STREET
(BRIDGE NO. N-12-056)

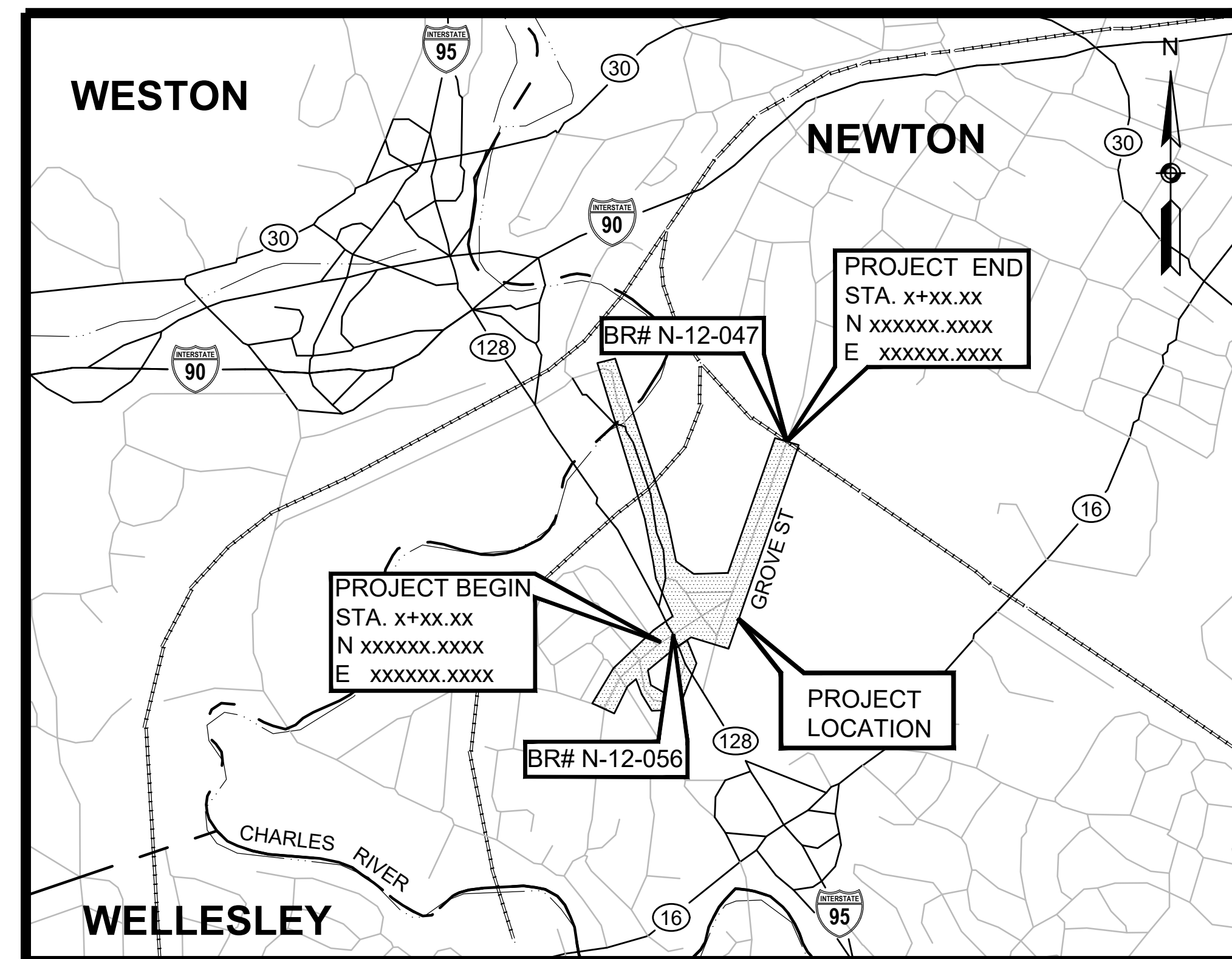
IN THE CITY OF
NEWTON
MIDDLESEX COUNTY

FEDERAL AID PROJECT NO. XXXX

THESE PLANS ARE SUPPLEMENTED BY THE OCTOBER 2017 CONSTRUCTION STANDARD DETAILS, THE 2015 OVERHEAD SIGNAL STRUCTURE AND FOUNDATION STANDARD DRAWINGS, MASSDOT TRAFFIC MANAGEMENT PLANS AND DETAIL DRAWINGS, THE 1990 STANDARD DRAWINGS FOR SIGNS AND SUPPORTS, THE 1968 STANDARD DRAWINGS FOR TRAFFIC SIGNALS AND HIGHWAY LIGHTING, AND THE LATEST EDITION OF THE AMERICAN STANDARD FOR NURSERY STOCK.

CONCEPTUAL DESIGN

SHEET NO.	DESCRIPTION
1	TITLE SHEET & INDEX
2 - 7	CONCEPT PLANS



0 1,000 2,000 3,000 4,000
SCALE: 1" = 1,000'

LENGTH OF PROJECT = XXX.XX FEET = X.XXX MILES

DESIGN DESIGNATION (RT 128/ I-95 & GROVE STREET)

DESIGN SPEED	XX MPH
ADT (YYYY)	X,XXX
ADT (YYYY)	X,XXX
K	X%
D	XX%
T (PEAK HOUR)	X.X%
T (AVERAGE DAY)	X.X%
DHV	XXX
DDHV	XXX
FUNCTIONAL CLASSIFICATION	XXXXXXXXXX

DATE	DESCRIPTION	REV #



RECOMMENDED FOR APPROVAL

VANASSE HANGEN BRUSTLIN, INC. DATE

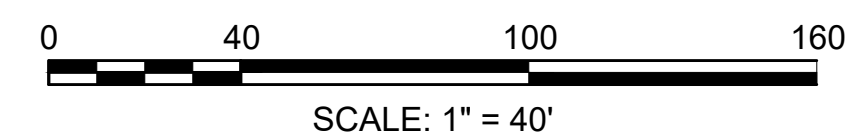
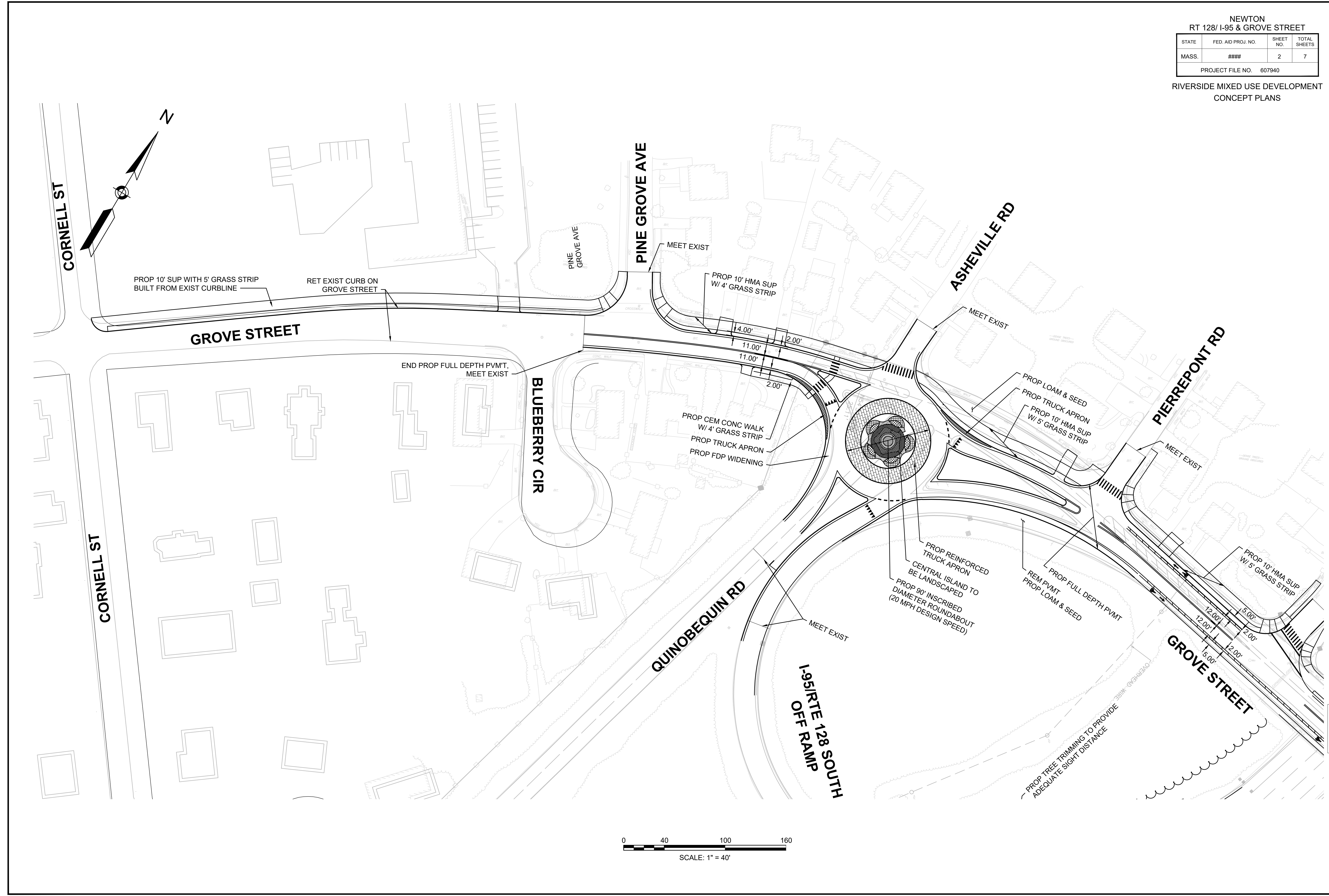
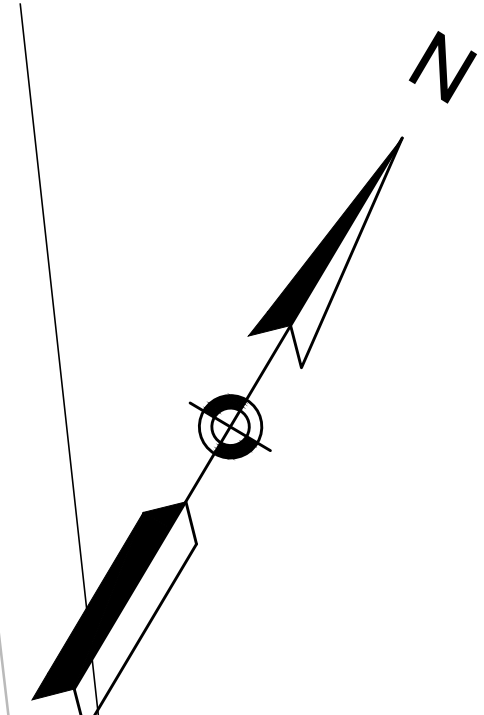
DEPARTMENT OF TRANSPORTATION
FEDERAL HIGHWAY ADMINISTRATION
APPROVED:

DIVISION ADMINISTRATOR DATE

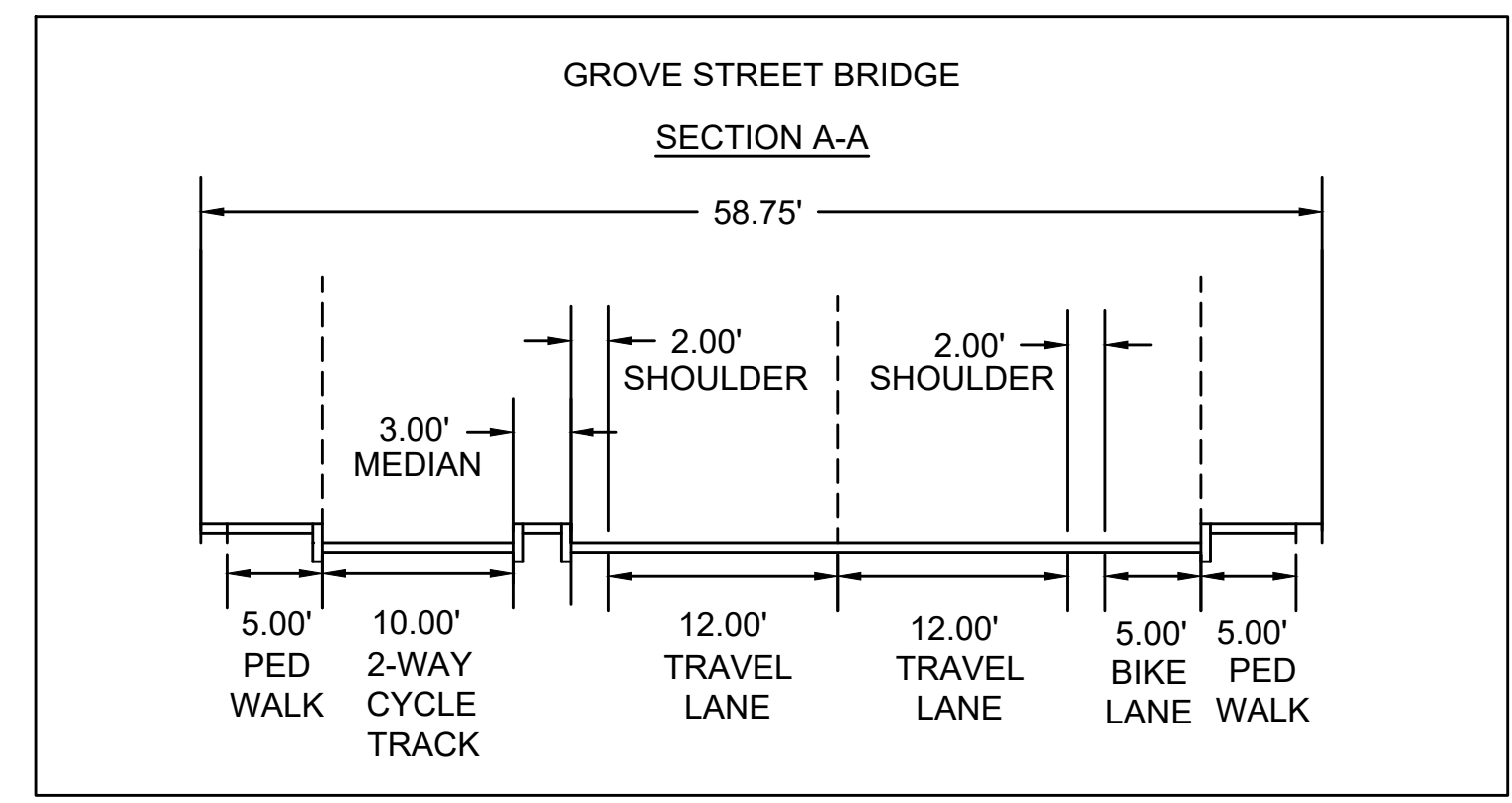
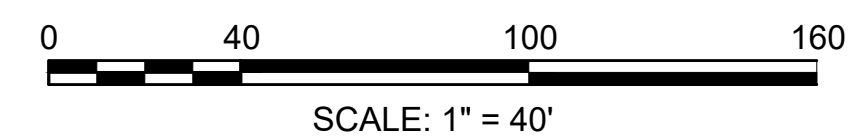
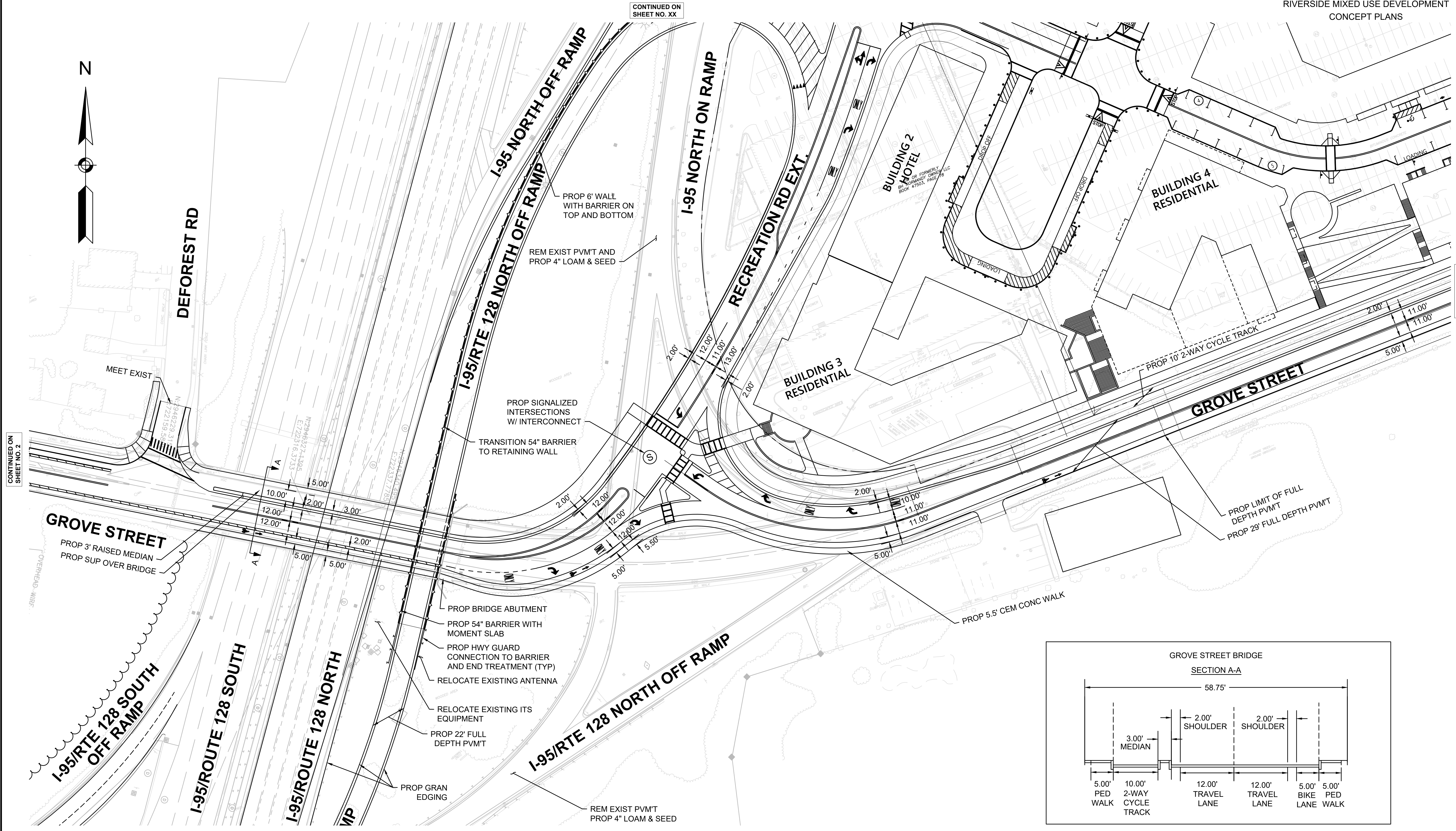
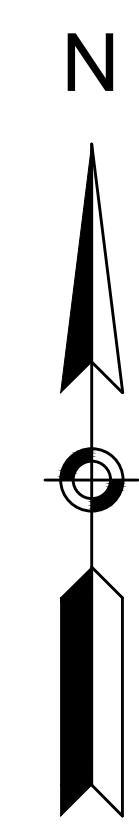
CHIEF ENGINEER DATE

APPROVED

HIGHWAY ADMINISTRATOR DATE



CONTINUED ON
SHEET NO. 3



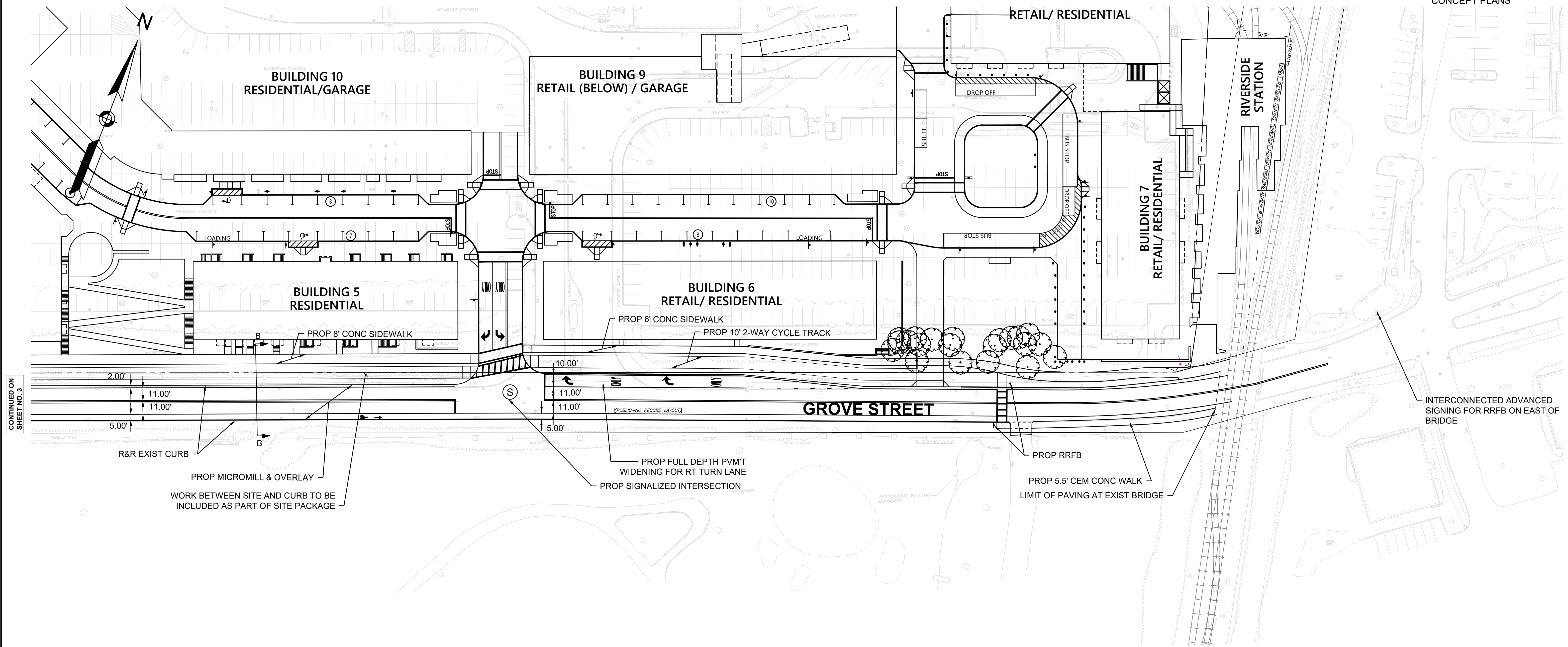
CONTINUED ON SHEET NO. 2

CONTINUED ON SHEET NO. 4

NEWTON
RT 128/ I-95 & GROVE STREET

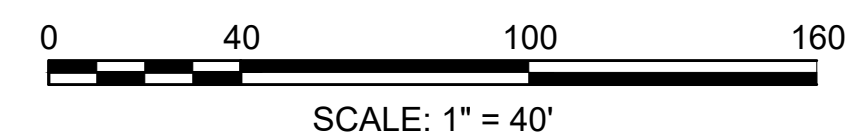
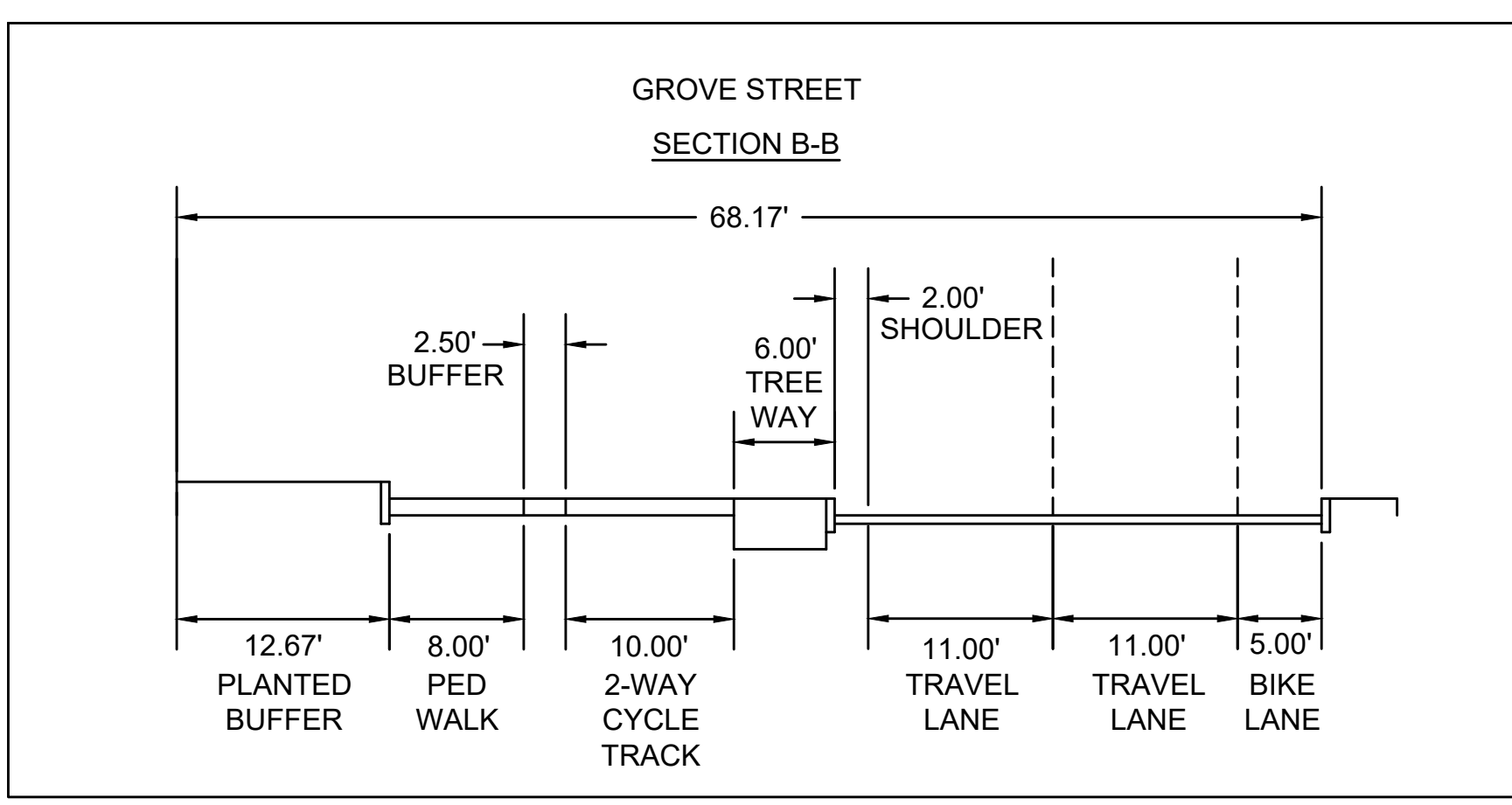
STATE	FED. AID PROJ. NO.	SHEET NO.	TOTAL SHEETS
MASS.	####	4	7
PROJECT FILE NO. 607940			

RIVERSIDE MIXED USE DEVELOPMENT
CONCEPT PLANS



CONTINUED ON
SHEET NO. 3

INTERCONNECTED ADVANCED
SIGNING FOR RRFB ON EAST OF
BRIDGE

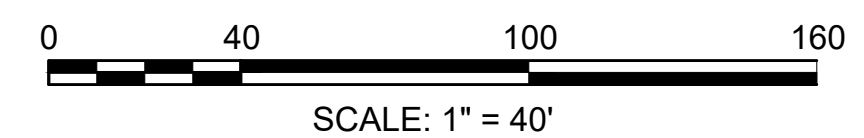
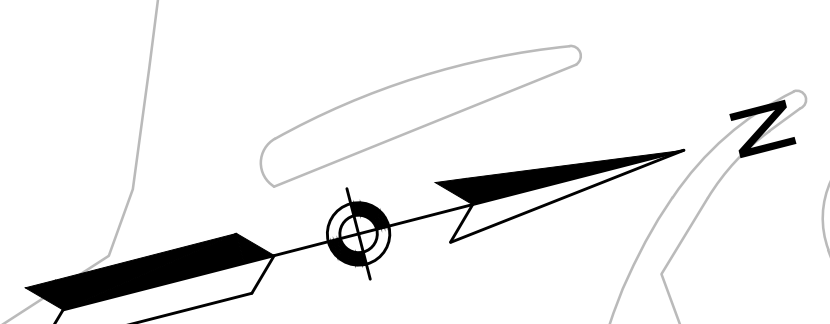
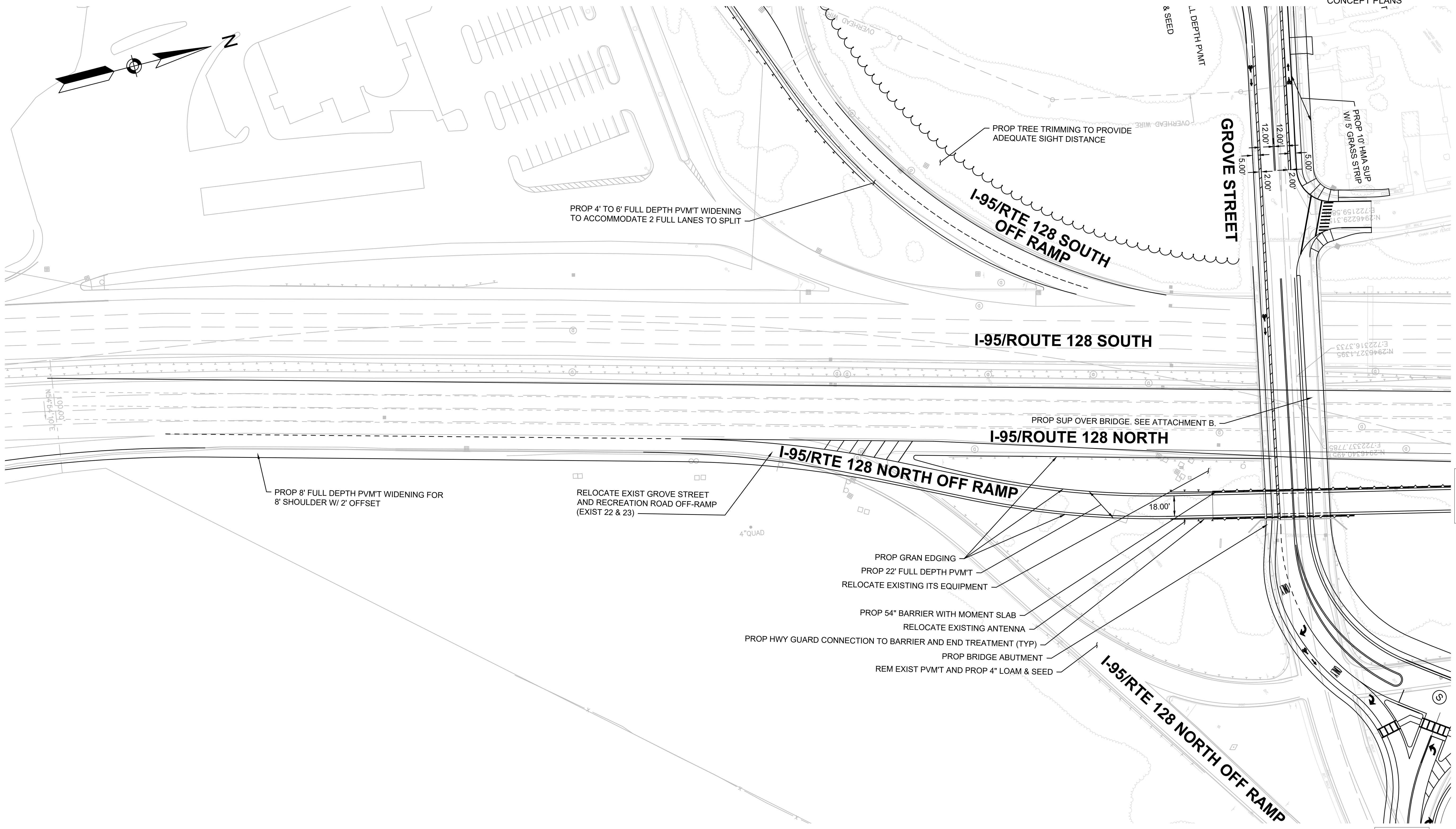


NEWTON
RT 128/ I-95 & GROVE STREET

STATE	FED. AID PROJ. NO.	SHEET NO.	TOTAL SHEETS
MASS.	####	5	7

PROJECT FILE NO. 607940

RIVERSIDE MIXED USE DEVELOPMENT
CONCEPT PLANS



CONTINUED ON
SHEET NO. 1

CONTINUED ON
SHEET NO. 6

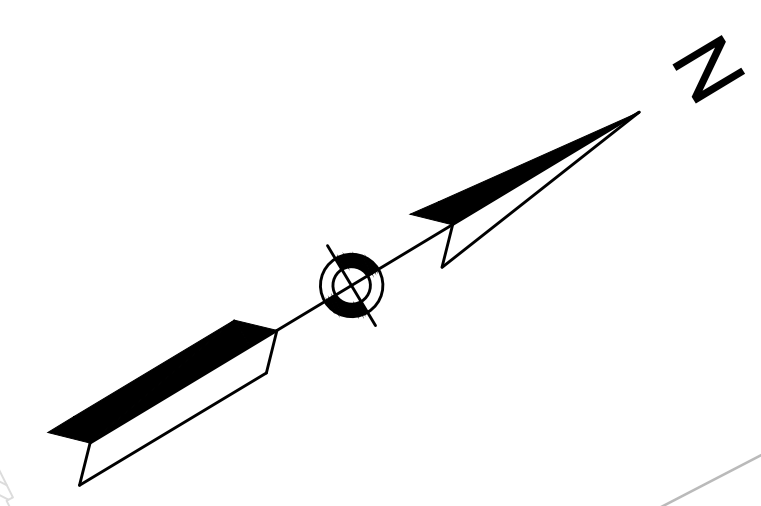
CONTINUED ON
SHEET NO. 4

NEWTON
RT 128/ I-95 & GROVE STREET

STATE	FED. AID PROJ. NO.	SHEET NO.	TOTAL SHEETS
MASS.	####	6	7

PROJECT FILE NO. 607940

RIVERSIDE MIXED USE DEVELOPMENT
CONCEPT PLANS



DEFOREST RD

I-95/ROUTE 128 SOUTH

I-95/ROUTE 128 NORTH

I-95 NORTH OFF RAMP

I-95/RTE 128 NORTH OFF RAMP

I-95 NORTH ON RAMP

RECREATION RD EXT.

RECREATION RD EXT.

BUILDING 1
OFFICE

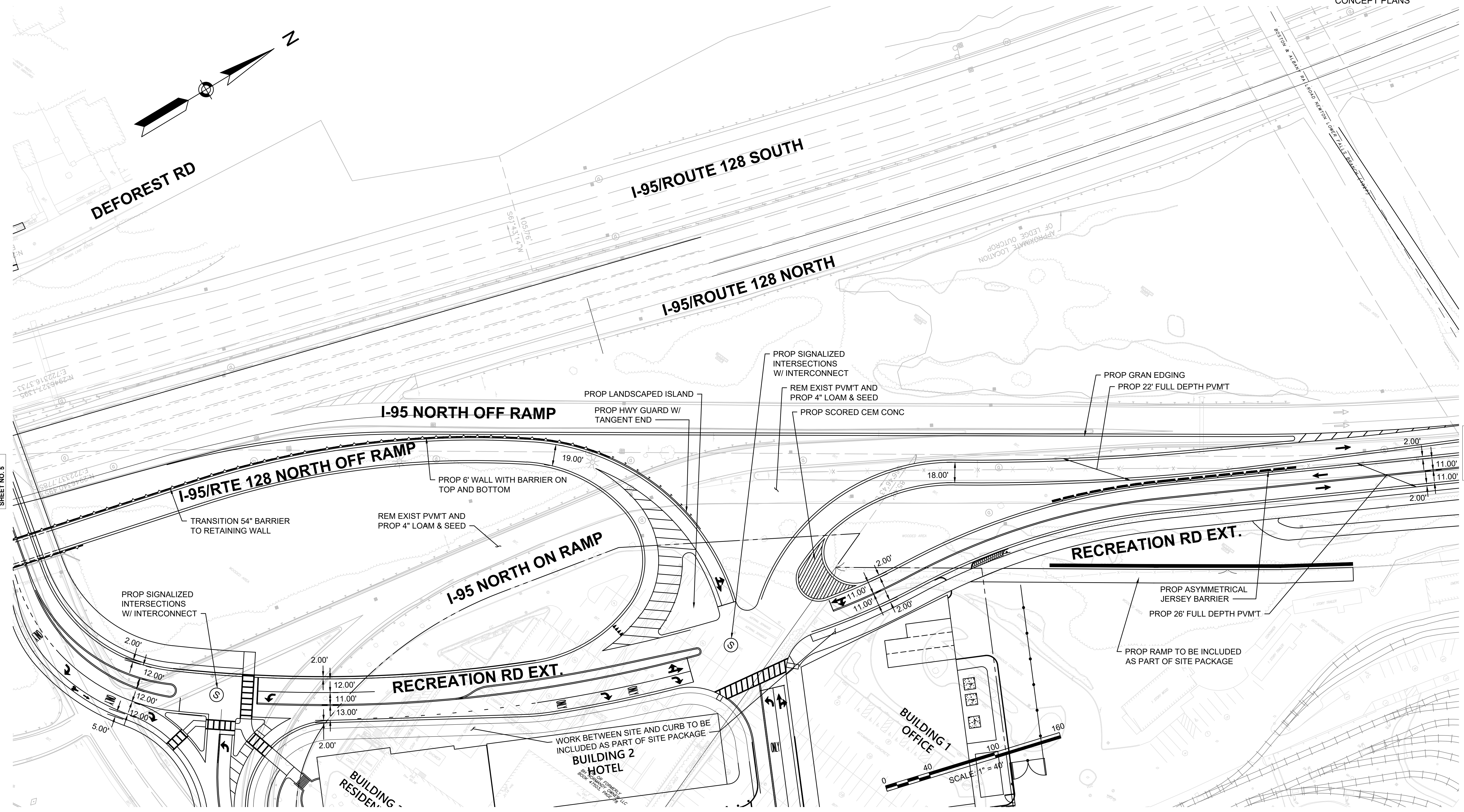
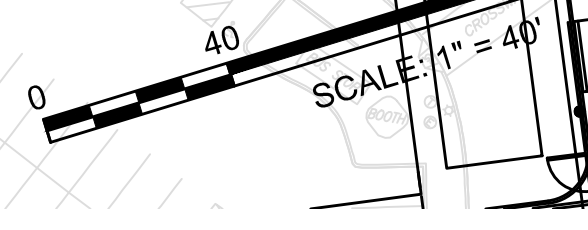
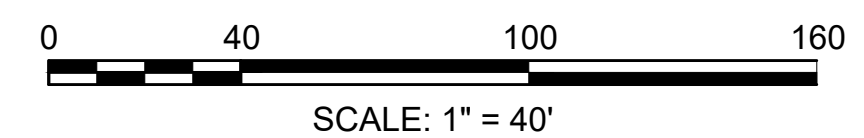
BUILDING 2
HOTEL

BUILDING
RESIDENT

CONTINUED ON
SHEET NO. 5

CONTINUED ON
SHEET NO. 7

CONTINUED ON
SHEET NO. 3

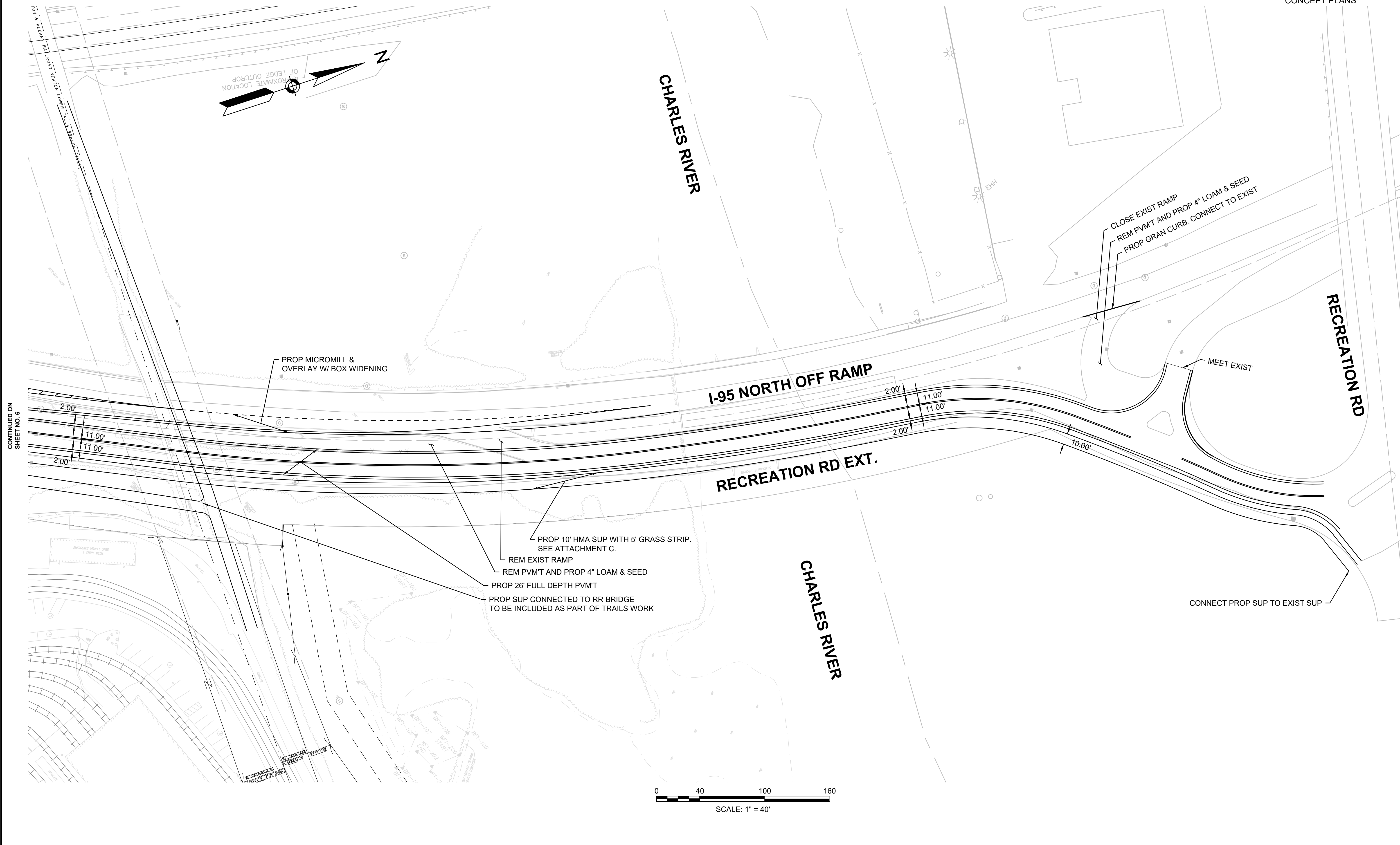


NEWTON
RT 128/ I-95 & GROVE STREET

STATE	FED. AID PROJ. NO.	SHEET NO.	TOTAL SHEETS
MASS.	####	7	7

PROJECT FILE NO. 607940

RIVERSIDE MIXED USE DEVELOPMENT
CONCEPT PLANS



CONTINUED ON
SHEET NO. 6