

# MASSACHUSETTS DEPARTMENT OF TRANSPORTATION HIGHWAY DIVISION

NEWTON RT 128/ I-95 & GROVE STREET			
STATE	FED. AID PROJ. NO.	SHEET NO.	TOTAL SHEETS
MA	XXXX	1	7
PROJECT FILE NO.		607940	

RIVERSIDE MIXED USE DEVELOPMENT  
TITLE & INDEX

PLAN OF  
RT 128/ I-95 & GROVE STREET  
(BRIDGE NO. N-12-056)

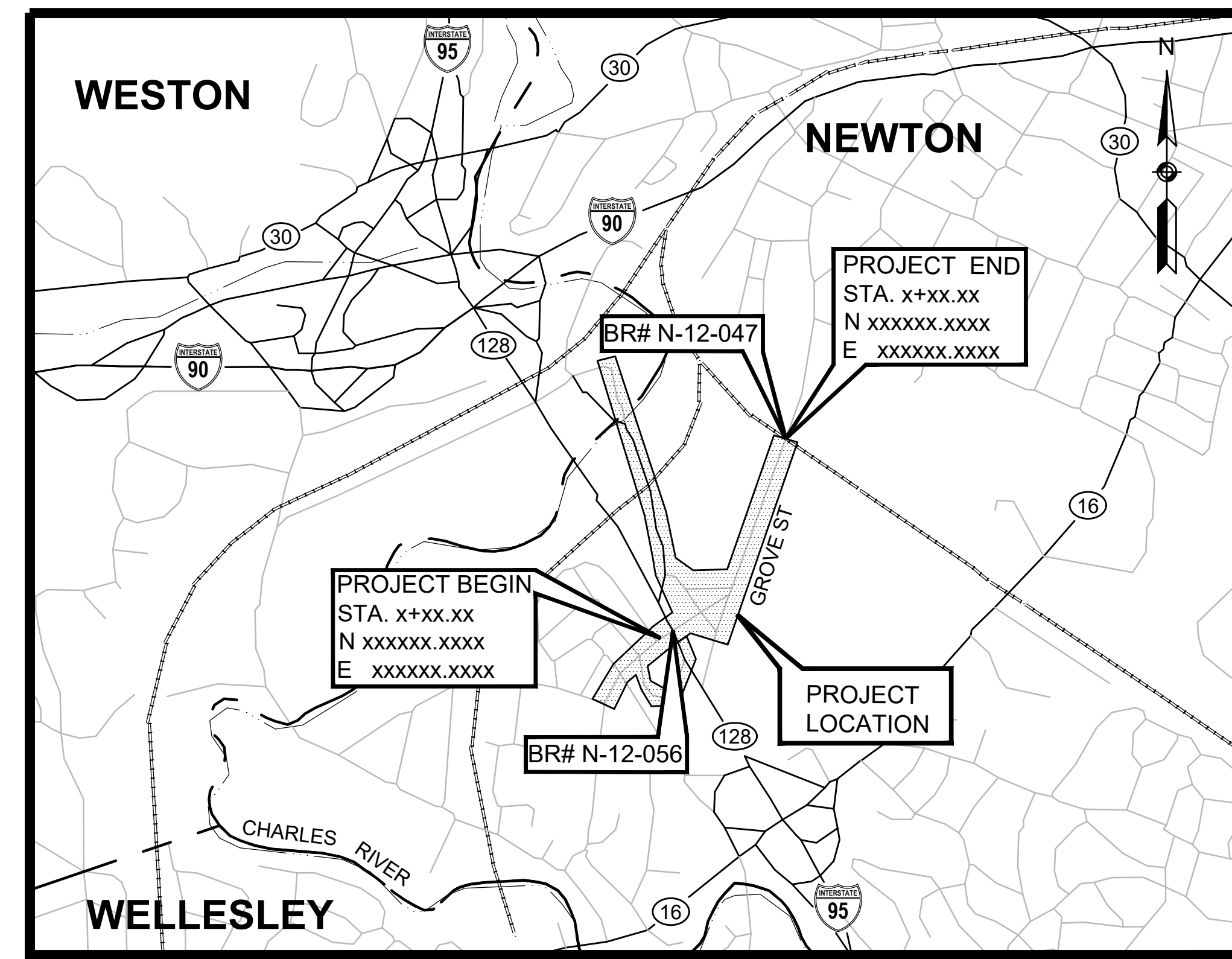
IN THE CITY OF  
NEWTON  
MIDDLESEX COUNTY

FEDERAL AID PROJECT NO. XXXX

THESE PLANS ARE SUPPLEMENTED BY THE OCTOBER 2017 CONSTRUCTION STANDARD DETAILS, THE 2015 OVERHEAD SIGNAL STRUCTURE AND FOUNDATION STANDARD DRAWINGS, MASSDOT TRAFFIC MANAGEMENT PLANS AND DETAIL DRAWINGS, THE 1990 STANDARD DRAWINGS FOR SIGNS AND SUPPORTS, THE 1968 STANDARD DRAWINGS FOR TRAFFIC SIGNALS AND HIGHWAY LIGHTING, AND THE LATEST EDITION OF THE AMERICAN STANDARD FOR NURSERY STOCK.

## CONCEPTUAL DESIGN

SHEET NO.	DESCRIPTION
1	TITLE SHEET & INDEX
2 - 7	CONCEPT PLANS



### DESIGN DESIGNATION (RT 128/ I-95 & GROVE STREET)

DESIGN SPEED	XX MPH
ADT (YYYY)	X,XXX
ADT (YYYY)	X,XXX
K	X%
D	XX%
T (PEAK HOUR)	X.X%
T (AVERAGE DAY)	X.X%
DHV	XXX
DDHV	XXX
FUNCTIONAL CLASSIFICATION	XXXXXXXXXX

DATE	DESCRIPTION	REV #

0 1,000 2,000 3,000 4,000  
SCALE: 1" = 1,000'

SEPTEMBER 25, 2020



RECOMMENDED FOR APPROVAL

VANASSE HANGEN BRUSTLIN, INC. DATE

CHIEF ENGINEER DATE

DEPARTMENT OF TRANSPORTATION  
FEDERAL HIGHWAY ADMINISTRATION  
APPROVED:

APPROVED

DIVISION ADMINISTRATOR DATE

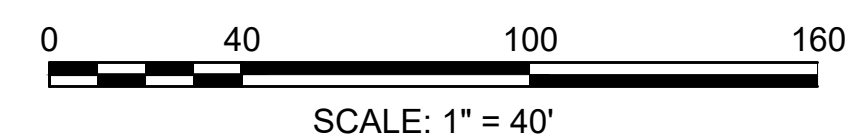
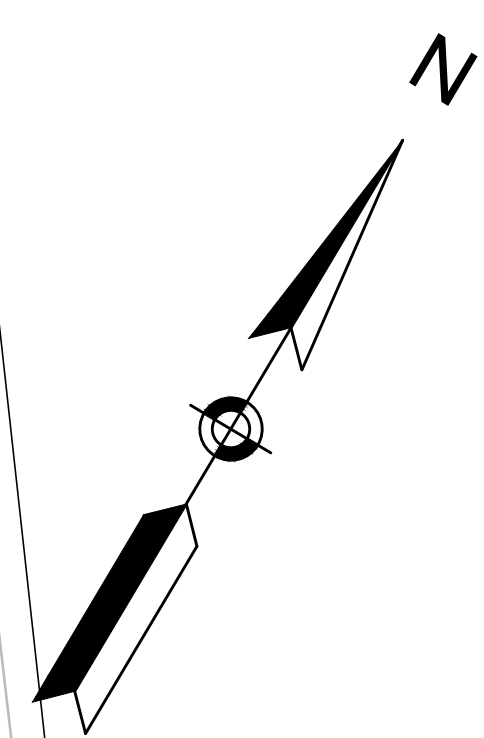
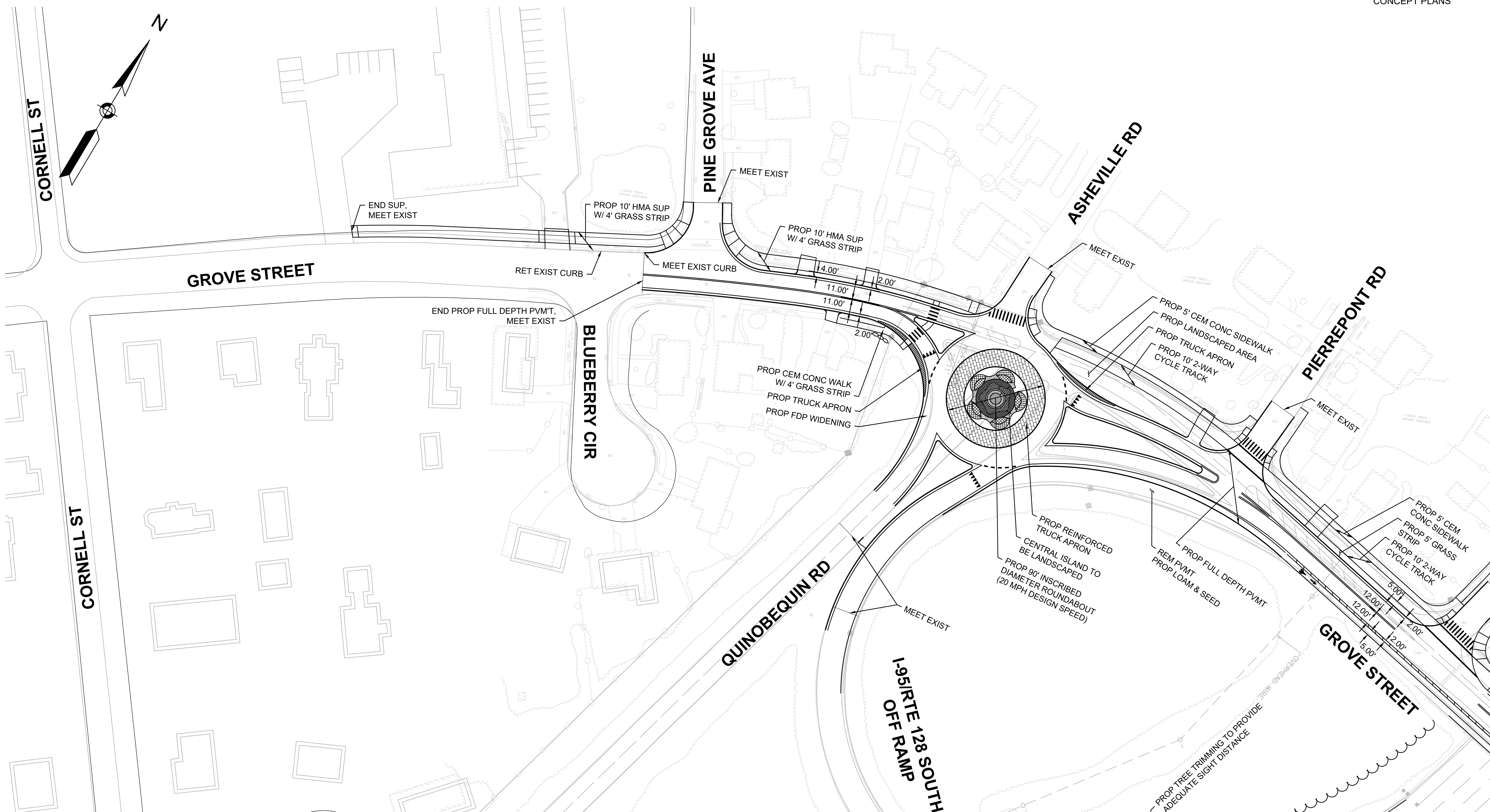
HIGHWAY ADMINISTRATOR DATE

NEWTON  
RT 128/ I-95 & GROVE STREET

STATE	FED. AID PROJ. NO.	SHEET NO.	TOTAL SHEETS
MASS.	####	2	7

PROJECT FILE NO. 607940

RIVERSIDE MIXED USE DEVELOPMENT  
CONCEPT PLANS



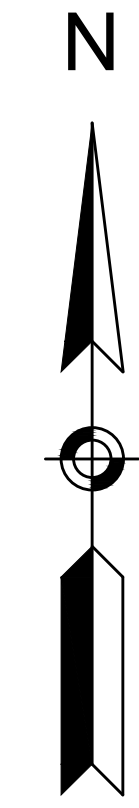
CONTINUED ON SHEET NO. 3

NEWTON  
RT 128/ I-95 & GROVE STREET

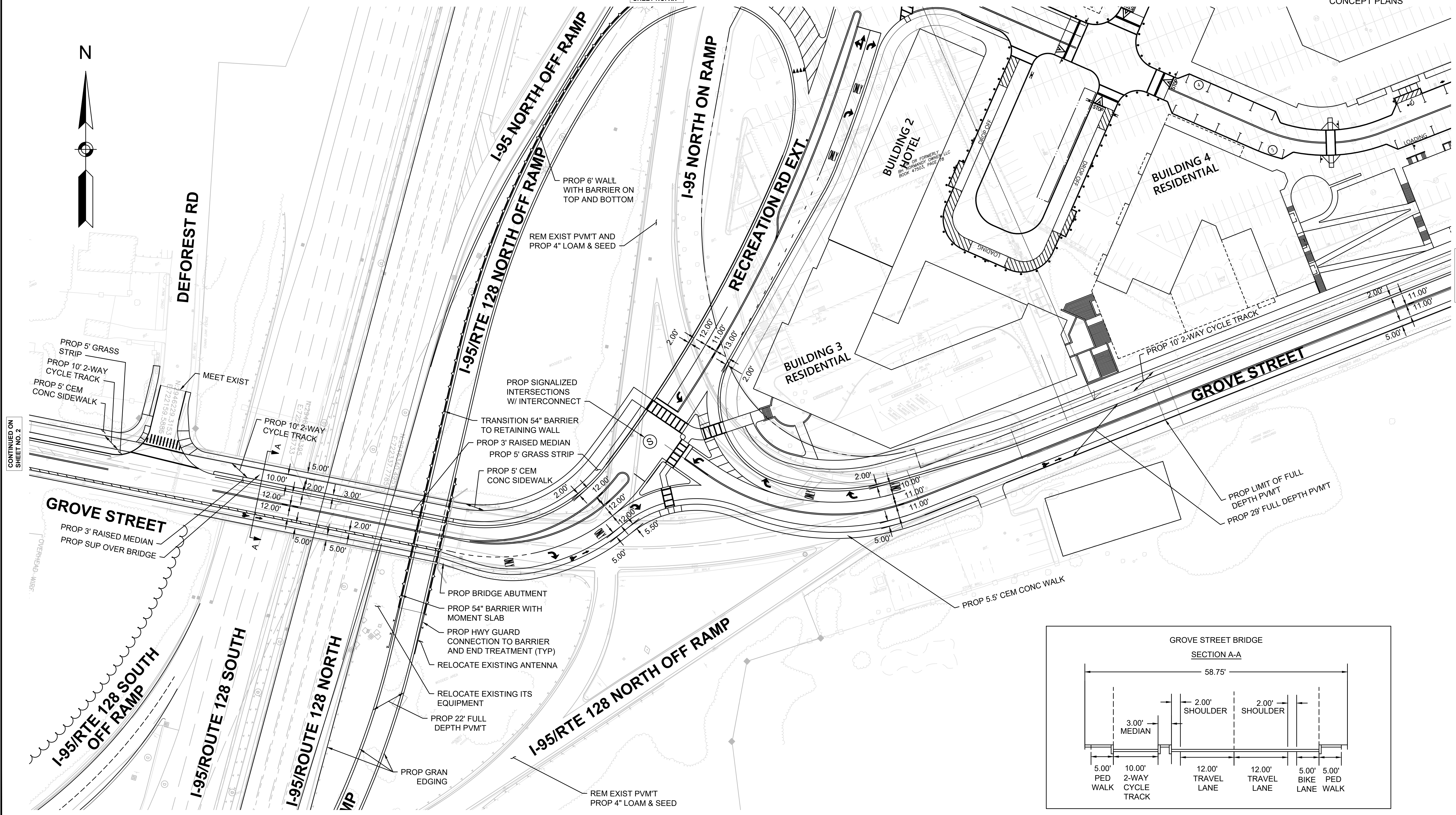
STATE	FED. AID PROJ. NO.	SHEET NO.	TOTAL SHEETS
MASS.	####	3	7

PROJECT FILE NO. 607940

RIVERSIDE MIXED USE DEVELOPMENT  
CONCEPT PLANS

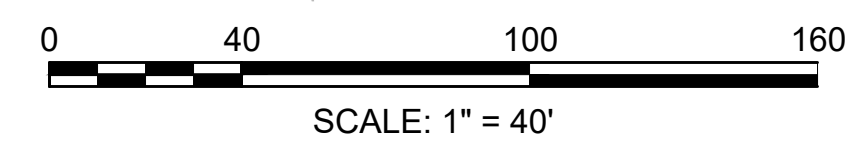
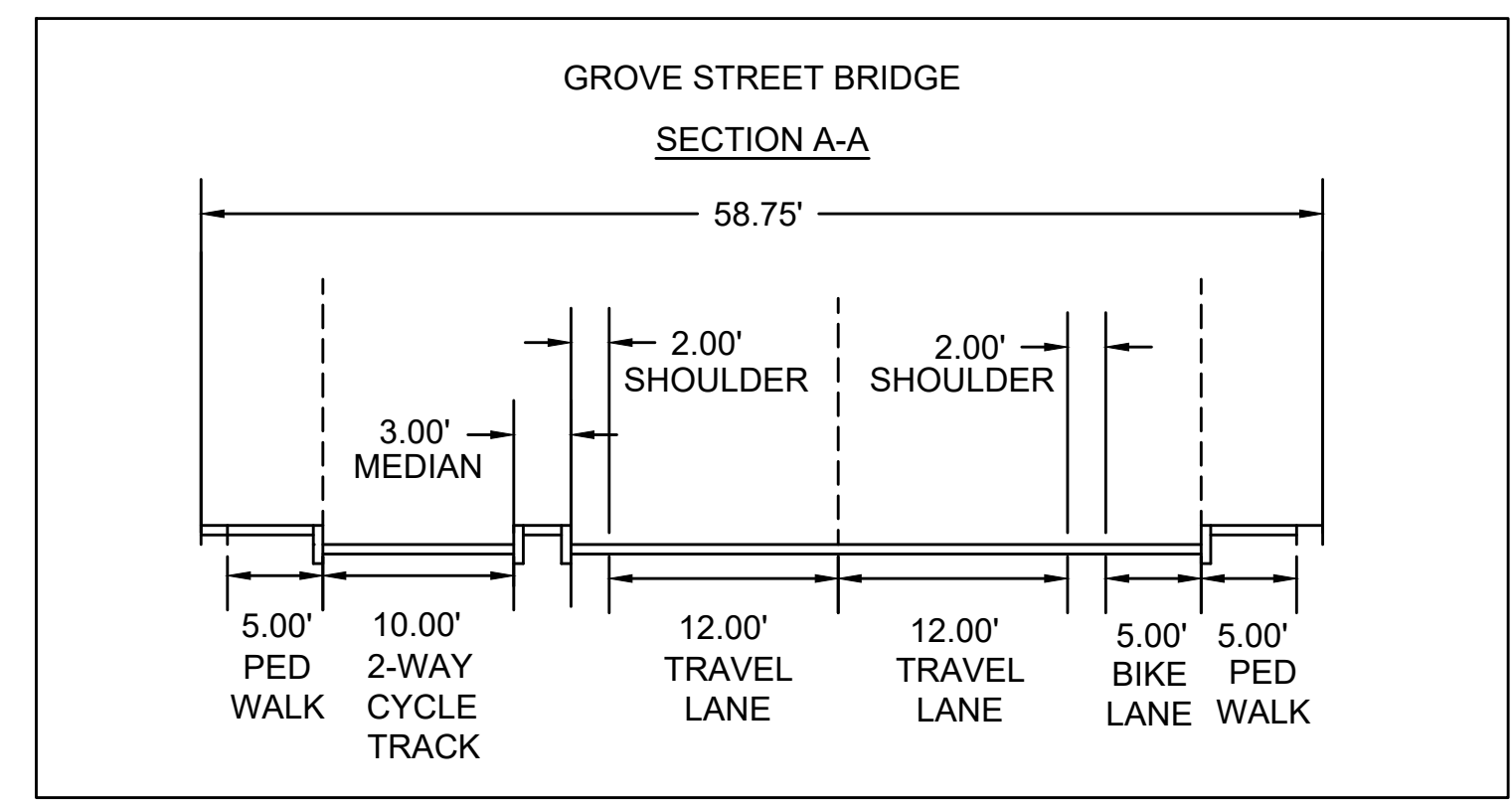


CONTINUED ON  
SHEET NO. XX



CONTINUED ON  
SHEET NO. 2

CONTINUED ON  
SHEET NO. 4

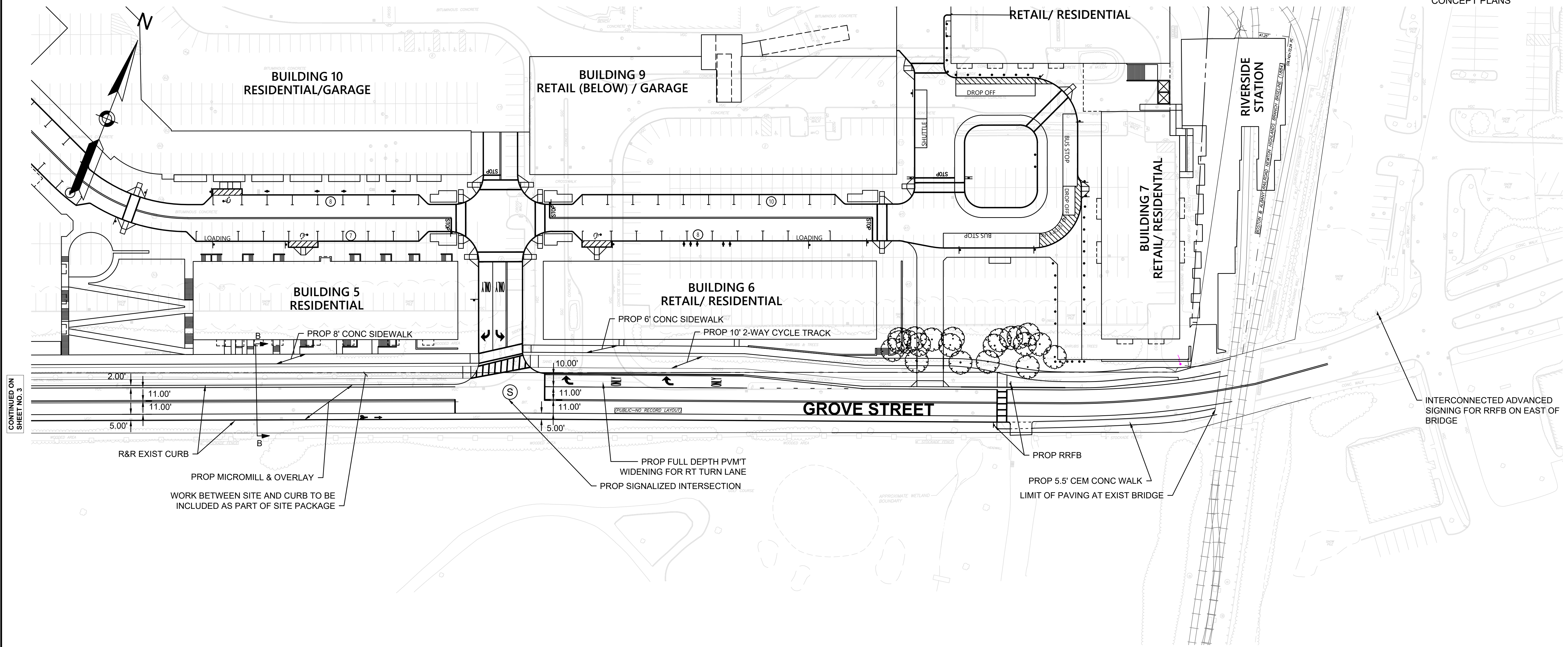


NEWTON  
RT 128/ I-95 & GROVE STREET

STATE	FED. AID PROJ. NO.	SHEET NO.	TOTAL SHEETS
MASS.	####	4	7

PROJECT FILE NO. 607940

RIVERSIDE MIXED USE DEVELOPMENT  
CONCEPT PLANS



CONTINUED ON  
SHEET NO. 3

2.00'  
11.00'  
11.00'  
5.00'

R&R EXIST CURB

PROP MICROMILL & OVERLAY

WORK BETWEEN SITE AND CURB TO BE INCLUDED AS PART OF SITE PACKAGE

10.00'  
11.00'  
11.00'  
5.00'

PROP 6' CONC SIDEWALK

PROP 10' 2-WAY CYCLE TRACK

PROP FULL DEPTH PVM/T WIDENING FOR RT TURN LANE

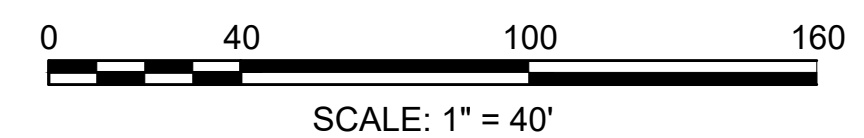
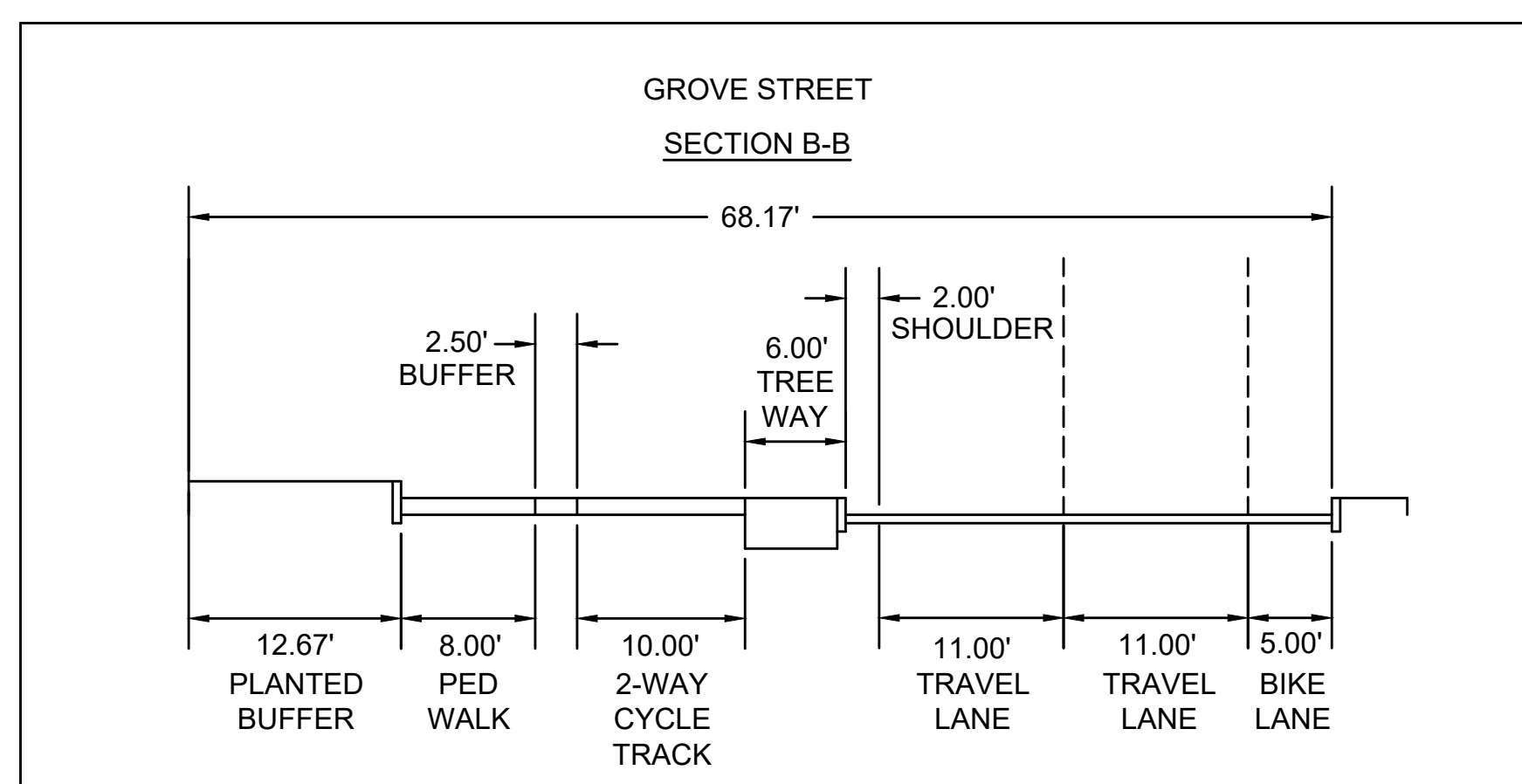
PROP SIGNALIZED INTERSECTION

PROP RRFB

PROP 5.5' CEM CONC WALK

LIMIT OF PAVING AT EXIST BRIDGE

INTERCONNECTED ADVANCED SIGNING FOR RRFB ON EAST OF BRIDGE

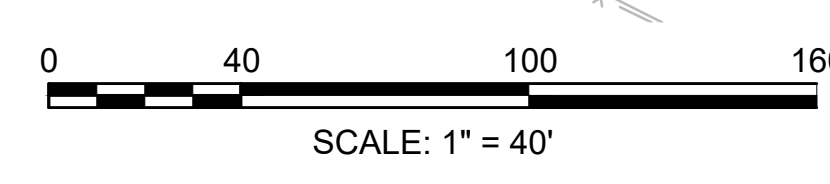
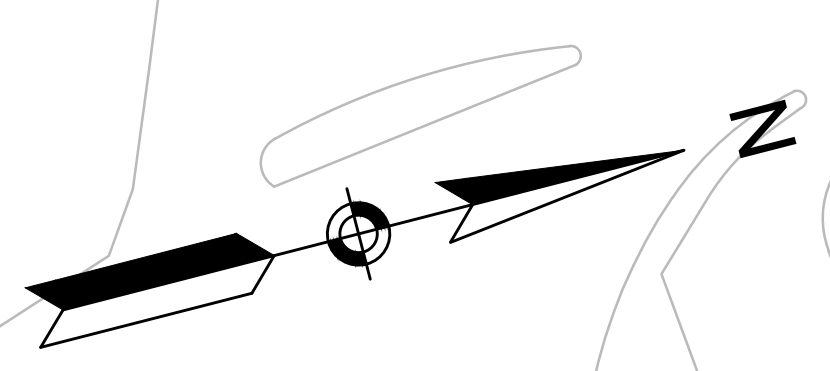
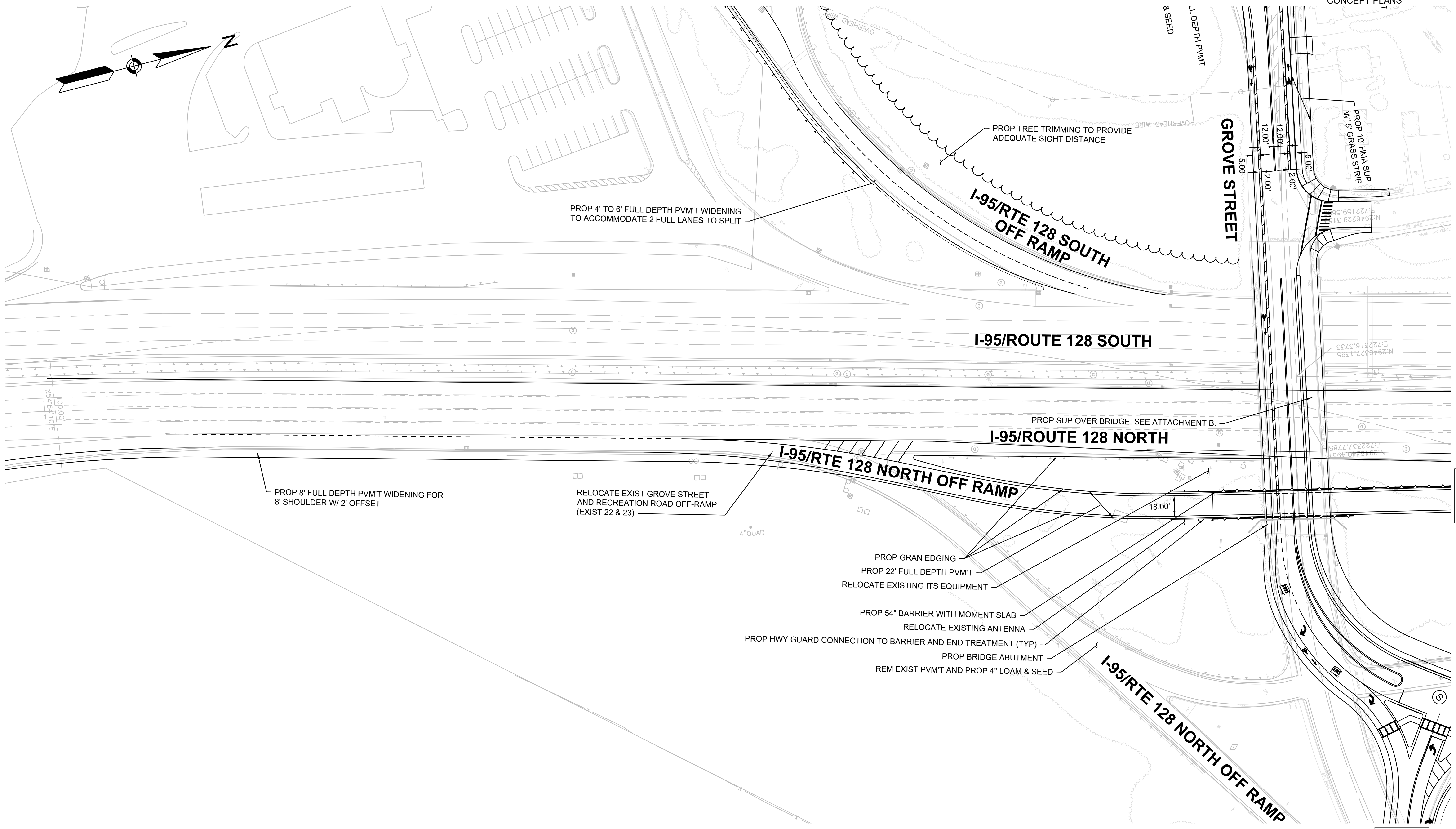


NEWTON  
RT 128/ I-95 & GROVE STREET

STATE	FED. AID PROJ. NO.	SHEET NO.	TOTAL SHEETS
MASS.	####	5	7

PROJECT FILE NO. 607940

RIVERSIDE MIXED USE DEVELOPMENT  
CONCEPT PLANS



CONTINUED ON  
SHEET NO. 1

CONTINUED ON  
SHEET NO. 6

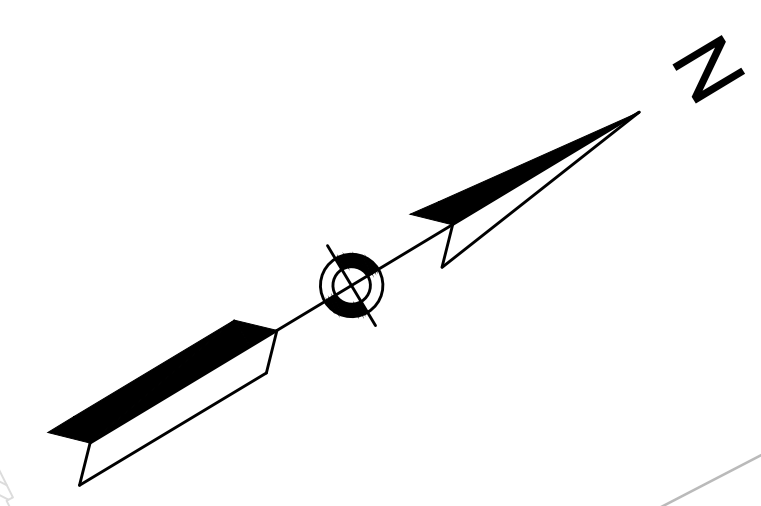
CONTINUED ON  
SHEET NO. 4

NEWTON  
RT 128/ I-95 & GROVE STREET

STATE	FED. AID PROJ. NO.	SHEET NO.	TOTAL SHEETS
MASS.	####	6	7

PROJECT FILE NO. 607940

RIVERSIDE MIXED USE DEVELOPMENT  
CONCEPT PLANS



DEFOREST RD

I-95/ROUTE 128 SOUTH

I-95/ROUTE 128 NORTH

I-95 NORTH OFF RAMP

I-95/RTE 128 NORTH OFF RAMP

I-95 NORTH ON RAMP

RECREATION RD EXT.

RECREATION RD EXT.

BUILDING 1  
OFFICE

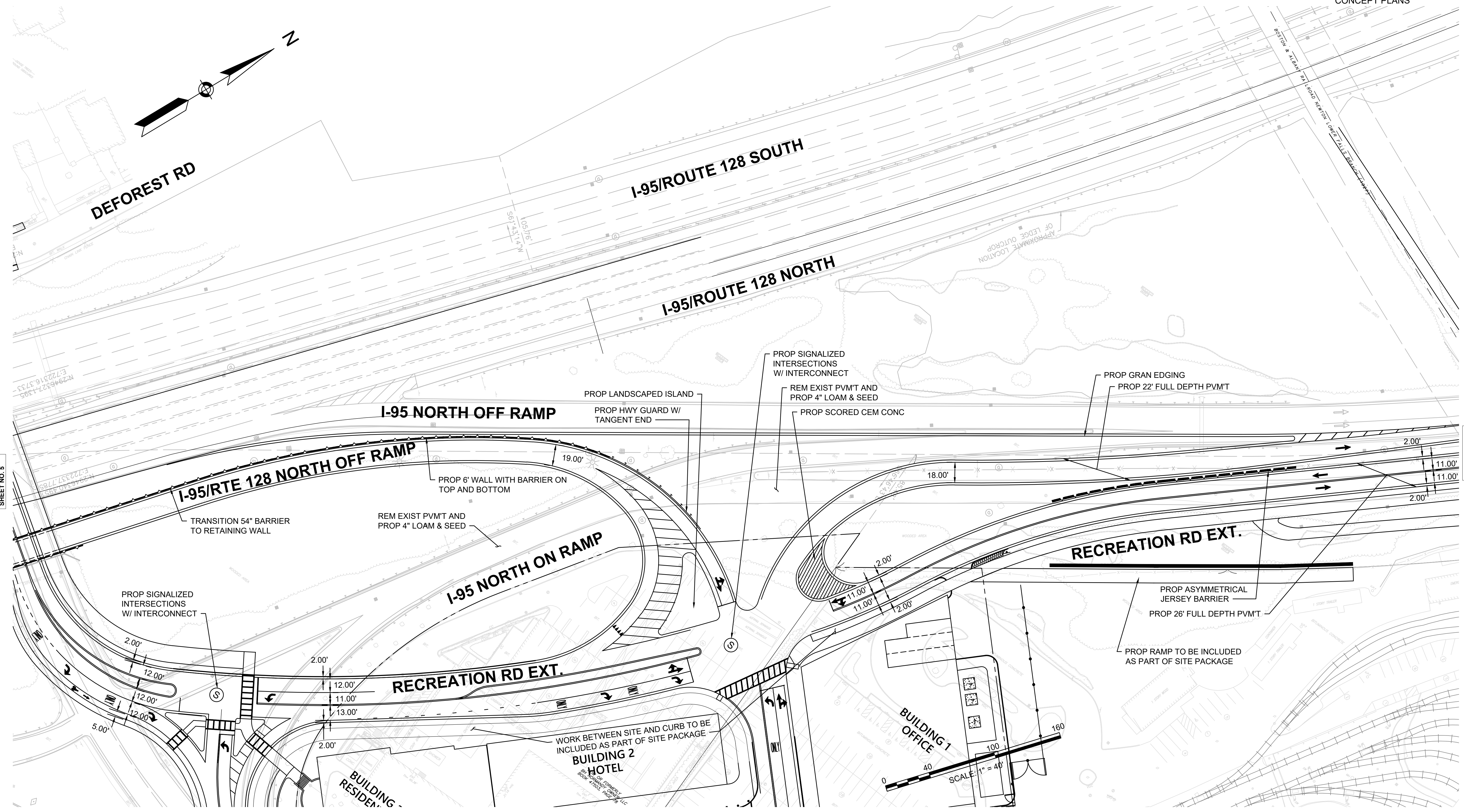
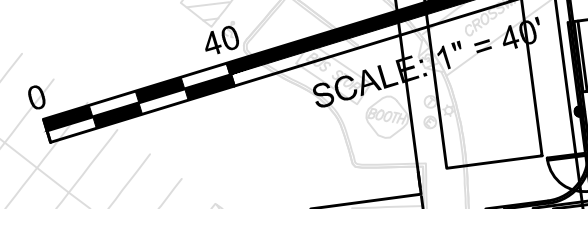
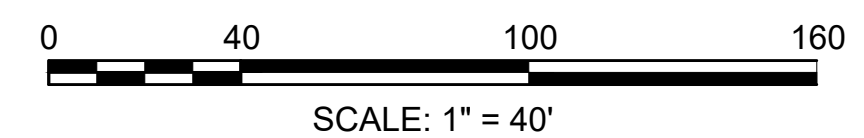
BUILDING 2  
HOTEL

BUILDING  
RESIDENT

CONTINUED ON  
SHEET NO. 5

CONTINUED ON  
SHEET NO. 7

CONTINUED ON  
SHEET NO. 3

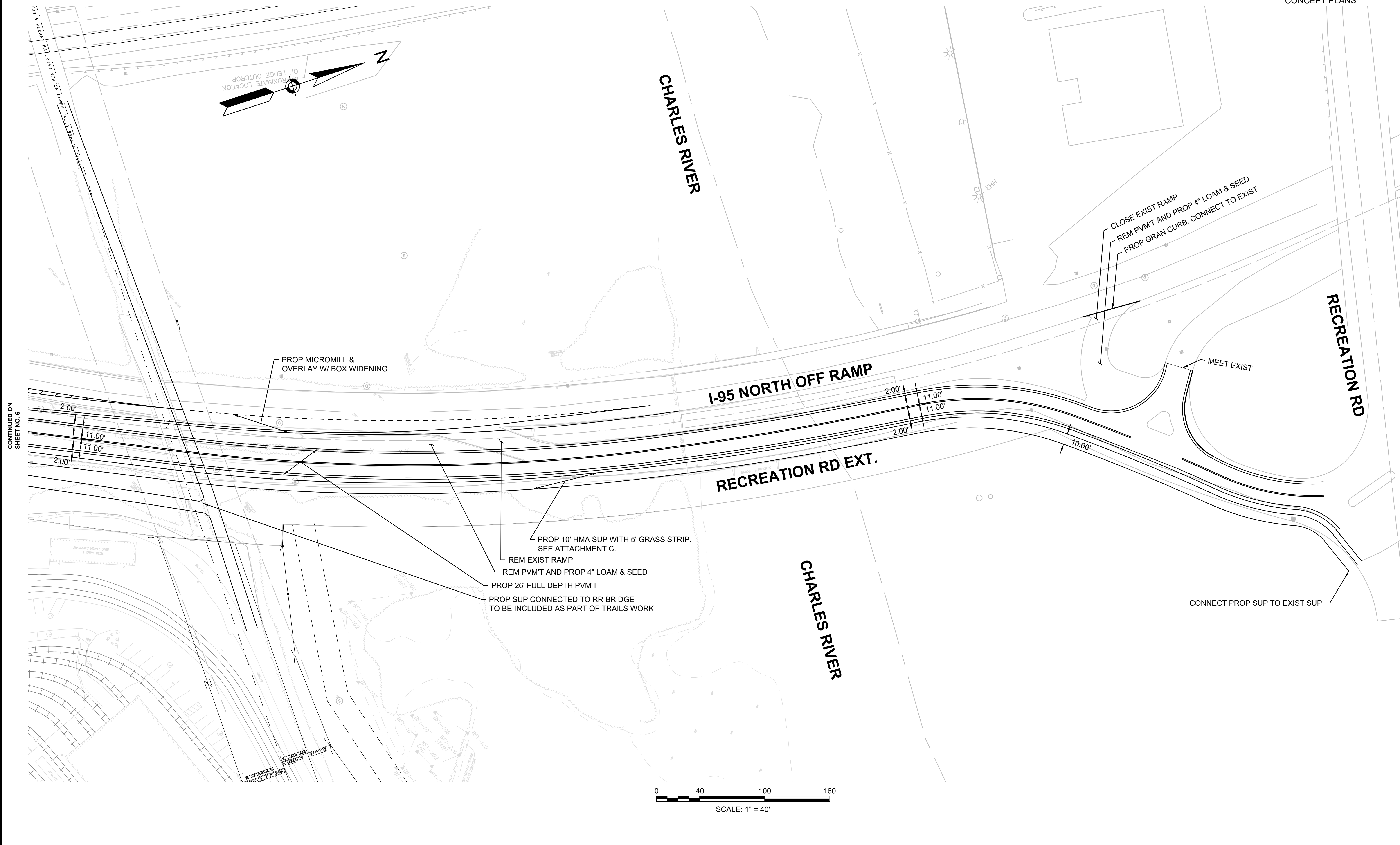


NEWTON  
RT 128/ I-95 & GROVE STREET

STATE	FED. AID PROJ. NO.	SHEET NO.	TOTAL SHEETS
MASS.	####	7	7

PROJECT FILE NO. 607940

RIVERSIDE MIXED USE DEVELOPMENT  
CONCEPT PLANS



CONTINUED ON  
SHEET NO. 6