

Section 5: Inventory of Lands of Conservation and Recreation Interest

In this chapter are maps, tables, and descriptions of Newton’s open space resources.

- Figure 33.** Newton’s Open Space (by Ownership and Level of Protection)
- Figure 34:** Public Open Space (acres/1000 residents)
- Figure 35.** Lands Protected by Deed Restriction
- Figure 36:** Publicly Owned and Managed Open Space (Codes from Section 5 tables)
- Figure 37:** Playing Fields and Courts
- Figure 38:** Playgrounds, Tot Lots, and Dog Parks
- Figure 39:** Aquatic Recreation Facilities
- Figure 40:** Other Recreation Facilities
- Figure 41:** Lands of Conservation or Recreation Interest -- Privately Owned Open Space

- Table 4:** Natural and Recreational Open Space Summary
- Table 5:** Conservation Restrictions, Agricultural Preservation Restrictions, and Conservation Easements
- Table 6:** Parks, Recreation & Culture Controlled Land
- Table 7:** Conservation Commission Controlled Land
- Table 8:** School Department Controlled Land
- Table 9:** General Municipal Controlled Land
- Table 10:** Cochituate Aqueduct (PRC and Privately Owned Lands)
- Table 11:** Sudbury Aqueduct (MWRA and Privately Owned Lands)
- Table 12:** Massachusetts Department of Conservation and Recreation Controlled Land
- Table 13:** Other Municipal, State, and Federal Land
- Table 14:** Privately Owned Golf Courses
- Table 15:** Privately Owned Cemeteries
- Table 16:** Tax-Exempt Land with Significant Open Space
- Table 17:** Private, Unprotected Land with Significant Open Space
- Table 18:** Trails Inventory

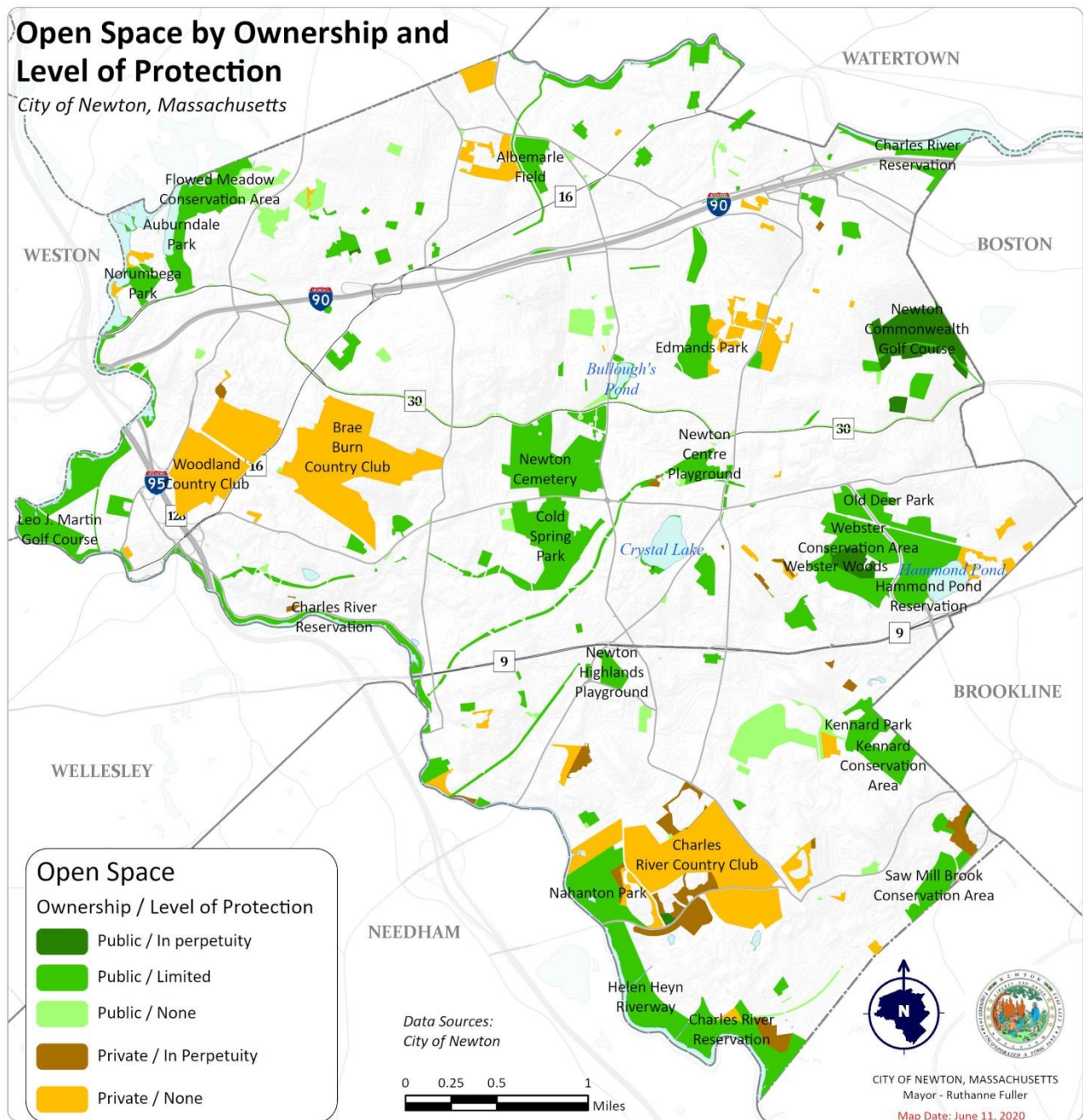
A. Introduction to the Categories of Open Space

These tables have been designed to meet state requirements by providing all required information about specific parcels. Much of this information was all encompassing for all parcels identified in a specific table and so was provided in the narrative text rather than as a separate column of tabular data.

Public and Private, Protected and Unprotected

Newton's open space resources are a combination of publicly and privately owned land, ranging from intensely managed recreational landscapes to minimally managed woodlands and wetlands. This inventory of open space resources includes lands legally protected for open space or recreation use, lands lacking legal protection, and lands temporarily incentivized for open space use under MGL Chapter 61. Privately owned lands which have open space value include recreational land, institutional property, and private estates of significant size. While the open space values of some of these private properties are protected by Conservation Restrictions, most are unprotected or only temporarily protected. See **Figure 33**.

Figure 33. Newton’s Open Space (by Ownership and Level of Protection)



Values of Open Space

All open space parcels, whether private or public, protected, unprotected, or under limited protection, have substantial value and benefit Newton’s residents and visitors. These open space resources provide many valuable services for Newton residents and visitors such as recreational and educational opportunities; mental, physical, emotional, and spiritual health; increased property values; support of the suburban character of the community; flood control; temperature modulation; clean water and clean air; and healthy ecological systems that support native plants and animals. In a densely populated urban setting, small

unbuilt parcels, green frontage and streetscapes can have special significance to individual neighborhoods and Newton as a whole, particularly when they are connected to other areas with open space value.

Including all categories inventoried in this chapter, Newton has approximately 2,500 acres of open space. This represents approximately 21% of the City's land base. Approximately 1,335 acres, about 11.5% of the City's land base, has some legal protection as open space, leaving 945 acres of significant privately held open space as potentially subject to development or conversion. Three private golf clubs comprise about 539 acres of significant privately owned open space, all of which fall under Chapter 61B.

Levels and Forms of Open Space Protection

This inventory of open space parcels includes lands legally protected for open space use, lands lacking such legal protection, and lands that are temporarily incentivized for open space use under MGL Chapter 61.

In Perpetuity

Lands are considered protected in perpetuity when legally and permanently protected as recorded in a deed or other official document. Private land is considered protected in perpetuity if it has a deed restriction in the form of a Conservation Restriction, an Agricultural Preservation Restriction, Historical Preservation Restriction, or Watershed Preservation Restriction. Public lands used for conservation or recreation purposes may be protected under the MA Constitutional Article 97, outlined below.

Deed restrictions provide legally binding language that prohibits development of lands in perpetuity and carries over through the land deed even if the land is sold to another owner. Newton and/or the Massachusetts Executive Office of Energy and Environmental Affairs (EOEEA) have protected multiple public and private properties with Conservation Restrictions (CRs) to date. These CRs serve to protect many acres of open space. There are currently 47 parcels in Newton protected with CRs. An Agricultural Preservation Restriction (APR) is a deed restriction that protects private land used for agriculture from development in perpetuity. Newton has one parcel, Angino Farm, protected through a CR. In total, there are nearly 176 acres of deed restricted lands in Newton, permanently protected from development.

Article 97

Article 97 of the state constitution protects certain park and open space parcels. Article 97 states:

“The people shall have the right to clean air and water, freedom from excessive and unnecessary noise, and the natural, scenic, historic, and esthetic qualities of their environment; and the protection of the people in their right to the conservation, development and utilization of the agricultural, mineral, forest, water, air and other natural resources is hereby declared to be a public purpose. ... Lands and easements taken or acquired for such purposes shall not be used for other purposes or otherwise disposed of except by laws enacted by a two-thirds vote, taken by yeas and nays, of each branch of the general court.”

Such lands cannot be converted or developed for other uses, *except by*: 1.) a unanimous vote of the local Conservation Commission; 2.) a vote from the Parks Commission if it is parkland in question; 3.) voted on at a town meeting and passed by a two-thirds majority; 4.) an Environmental Notification Form with EOEEA's MEPA Unit; and 5.) voted by both branches under the Massachusetts Legislature and passed by a two-thirds majority. Lands protected under Article 97 are typically owned by municipal Conservation Commissions, Parks and Recreation Departments, Water Departments, or State Conservation agencies (OSRP Workbook, 2008 pg. 34). Newton has about 1,300 acres of open space that is protected under Article 97, which is over 50% of total open space.

Limited / Temporary

This category includes land that is legally protected for a defined period of time (e.g. a thirty-year Conservation Restriction), or protected through strong but limited open space designations, but could be developed for other uses at the end of their temporary protection or when they no longer serve a conservation or recreation function. Limited protection is protection by legal mechanisms other than those stated above. These lands might be protected by a majority municipal vote or are lands likely to remain open space for other reasons (e.g. cemeteries). Oftentimes, publicly owned land designated for public use purposes, such as parks and conservation areas, are protected under Article 97 of the MA Constitution.

MGL Chapter 61

The Chapter 61 tax programs provide a financial incentive for private landowners to manage their properties for forestry, agricultural, and recreational purposes under reduced property taxes under three distinct special taxation programs: Chapter 61 covers forested lands, Chapter 61A covers agricultural lands, and Chapter 61B covers open space and recreation lands (DCR Chapter 61 Programs). Not all Chapter 61 lands are required to be open to the public. Chapter 61 properties must be managed for forestry, agriculture, or open space and recreation purposes. If these properties are sold, converted to non-Chapter uses, or otherwise removed from Chapter 61 before the time limit expires, the community is afforded the Right of First Refusal to purchase the land — or the ability to assign its right to a nonprofit — and the landowner must pay accumulated back taxes (OSRP Workbook, 2008 pg. 36). The three privately owned golf courses are taxed under Chapter 61B, as recreational land. While tax abatement programs such as MA Chapter 61 provide strong financial incentives for conservation or recreational uses, and hold consequences for converting to non-chapter uses, these programs are *not considered* a form of legal open space protection, but rather a *temporary incentive against development*.

None/Not Protected

Lands that are unprotected, which are usually privately owned, could be sold for non-conservation or recreation uses at any time. Some publicly owned properties may be considered unprotected if they are not explicitly and clearly dedicated to public use purposes, such as conservation and recreation.

B. Introduction to Newton's Open Space Inventory

There are roughly 2500 acres of diverse open space resources in the City of Newton which is managed by a variety of parties including City Departments, state agencies, non-profit organizations, and private landowners. **See Table 4.**

Additions to the inventory of conservation areas, since the 2013-2020 OSRP, include several parcels known as Kessler Woods, and Webster Woods; additions to Parks and Recreation include Waban Hill Reservoir and the 99-year lease secured from the MBTA for the Upper Falls Greenway.

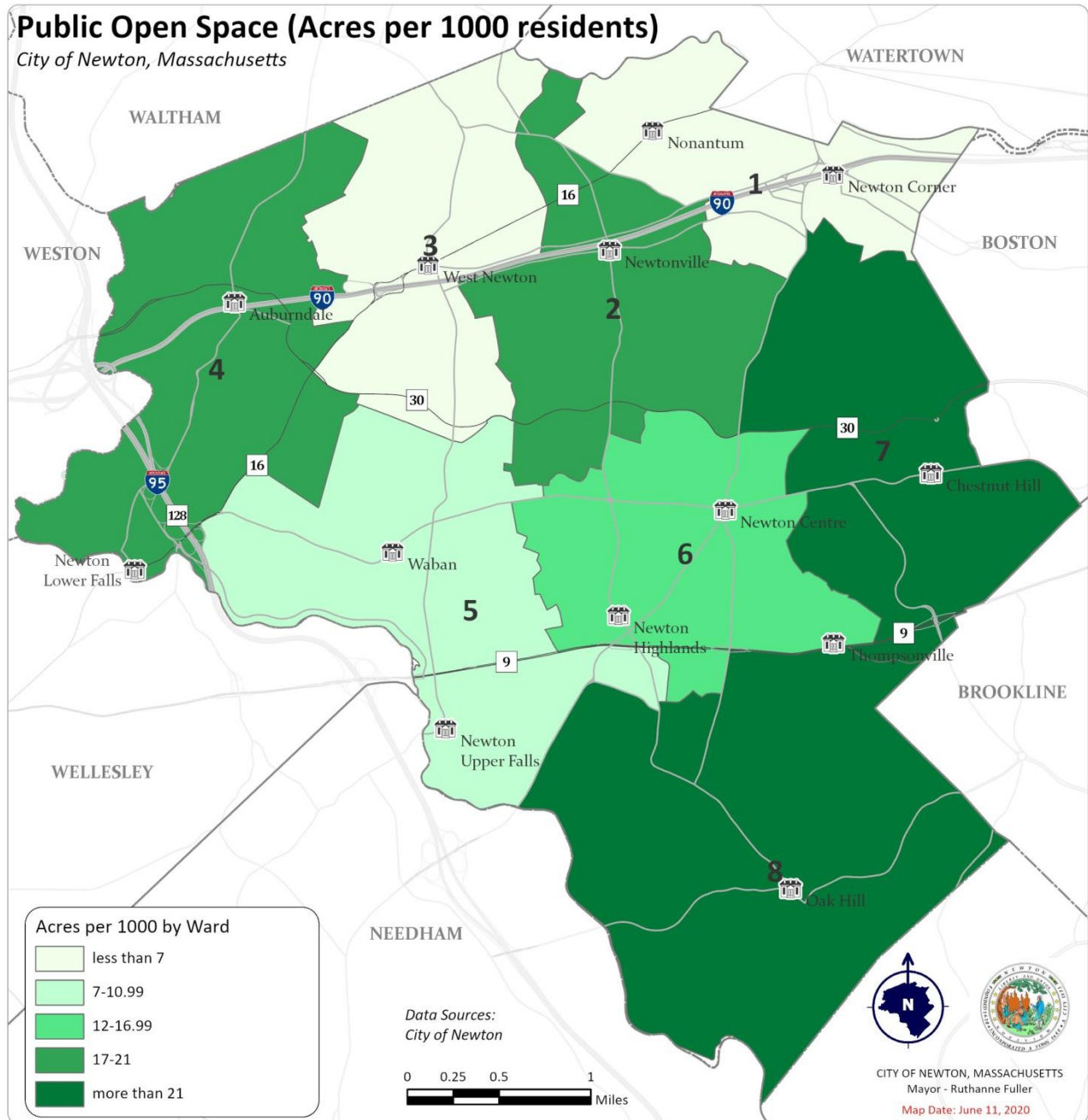
Newton is almost entirely developed, and there are few opportunities for additional park development. The City can still look to incorporate and improve bike lanes and walking trails for passive recreation and for ecological gains that would contribute to open space quality. Areas of City-owned land can also be converted into smaller pocket parks.

Table 4. Natural and Recreational Open Space in Newton: A Summary		
Category	Area in Acres	% of Total Open Space
Publicly Owned Open Space - Subtotal	1,556.96	62.2 %
Newton Parks, Recreation & Culture (Table 3)	558.6	22.4 %
Newton Parks, Recreation & Culture – Medians (Table 3)	7.34	0.03 %
Newton Conservation Commission (Table 4)	310.79	12.4 %
Newton School Department (Table 5)	200.33	8.0 %
General Municipal Control (Table 6)	71.63	2.9 %
Cochituate Aqueduct (Table 7)	41.21	1.6 %
Sudbury Aqueduct (Table 8)	20.65	0.9 %
Massachusetts Department of Conservation and Recreation (Table 9)	338.76	13.5 %
Other Municipal, State, and Federal Land (Table 10)	7.80	0.4 %
Privately Owned Open Space - Subtotal	944.86	37.8%
Golf Courses (Table 11)	542.69	21.8 %
Cemeteries (Table 12)	118.62	4.7 %
Tax Exempt Land w/ Significant Open Space (Table 13)	205.12	8.2 %
Private Land w/ Significant Open Space (Table 14)	78.43	3.2 %
TOTAL	2501.82	100 %

Open spaces and the services and amenities they provide are not evenly distributed throughout the City. **Figure 34** shows that Newton, taken as a whole, is close to the national recommended standard of 15 acres of public open space per 1,000 residents, but that some wards fall below that ratio. (City of Newton, 2014).

Map codes (e.g. P33) are provided for each parcel, or grouping of parcels, inventoried in this Section. Letters refer to ownership of the parcel, e.g., with parcels owned by Parks, Recreation and Culture being labelled with P. Numbers serve to distinguish individual parcels. Map codes for publicly owned open space are shown in **Figure 36** and map codes for privately owned open space are shown in **Figure 41**.

Figure 34: Public Open Space (acres/1000 residents)



C. Inventory of Open Space and Recreation Lands

CRs, APRs, and Conservation Easements (Table 5)

This category of open space includes all lands in Newton with a deed restriction or easement. Lands are considered protected in perpetuity when legally and permanently protected as recorded in a deed or other official document, such as a Conservation Restriction (CR), an Agricultural Preservation Restriction (APR), Historical Preservation Restrictions (HPR), or a Watershed Preservation Restriction (WPR). Deed restrictions provide legally binding language that prohibits development of lands in perpetuity and carries over through the land deed even if the land is sold to another owner. An APR is a deed restriction that protects private land used for agriculture from development, in perpetuity. A landowner may elect to place a Conservation Restriction on all or part of his property, deriving tax benefits by removing the possibility of future development, effectively devaluing the property.

In Newton, these lands include conservation areas, wooded parcels, a farm, and portions of privately owned properties. In total, there are nearly 176 acres of deed restricted lands in Newton, permanently protected from development. There are currently 47 parcels in Newton protected with CRs. Newton has one parcel, Angino Farm, protected through an APR. See **Figure 35 and Table 5**.

Publicly Owned Land

Publicly owned open space includes municipal land managed by Parks, Recreation & Culture (PRC), the Conservation Commission, and School Departments, state-owned land managed by the Massachusetts Department of Conservation and Recreation (DCR) and Massachusetts Water Resources Authority (MWRA).

The City of Newton owns about 77% of Newton's public open space, with most of that land under the jurisdiction of PRC and the Conservation Commission.

The Massachusetts Department of Conservation and Recreation (DCR) and Massachusetts Water Resource Authority (MWRA) have jurisdiction over significant open space parcels including Hammond Pond Reservation, riparian areas along the Charles River, and the Sudbury Aqueduct.

Many of these publicly owned open spaces are protected under Article 97 of the MA Constitution, but it is unknown which parcels are explicitly and legally deeded as Article 97 lands. In order to ensure the ongoing protection of these parcels as open space, an assessment of deeds is necessary. In these tables, it is assumed that, due to public ownership status *and* current use as open space, recreational, or natural resource conservation lands, these parcels are protected under Article 97. However, further protection through Conservation Restrictions, may be appropriate in some cases. See **Figure 36**.

Figure 35. Lands Protected by Deed Restrictions

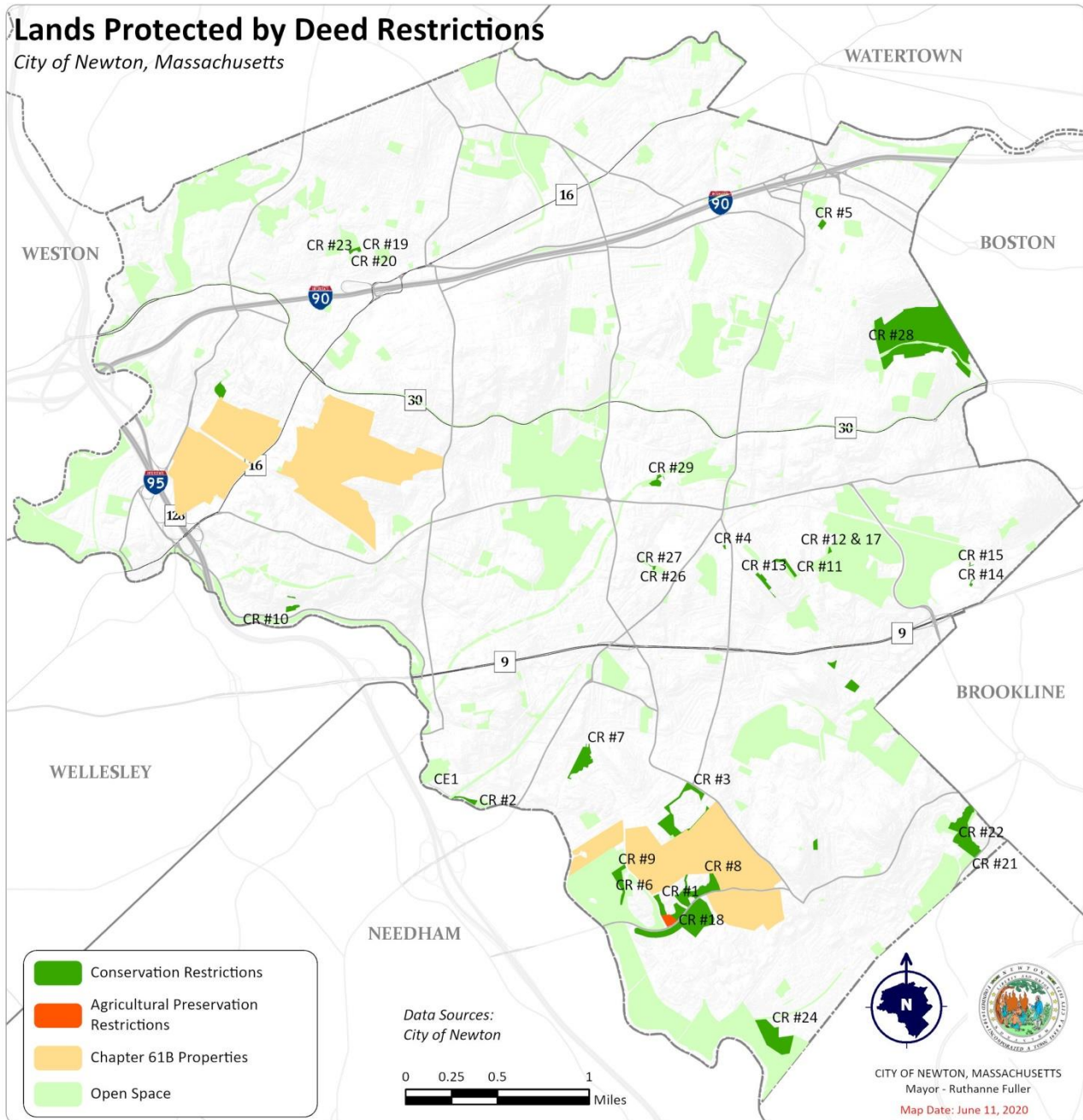
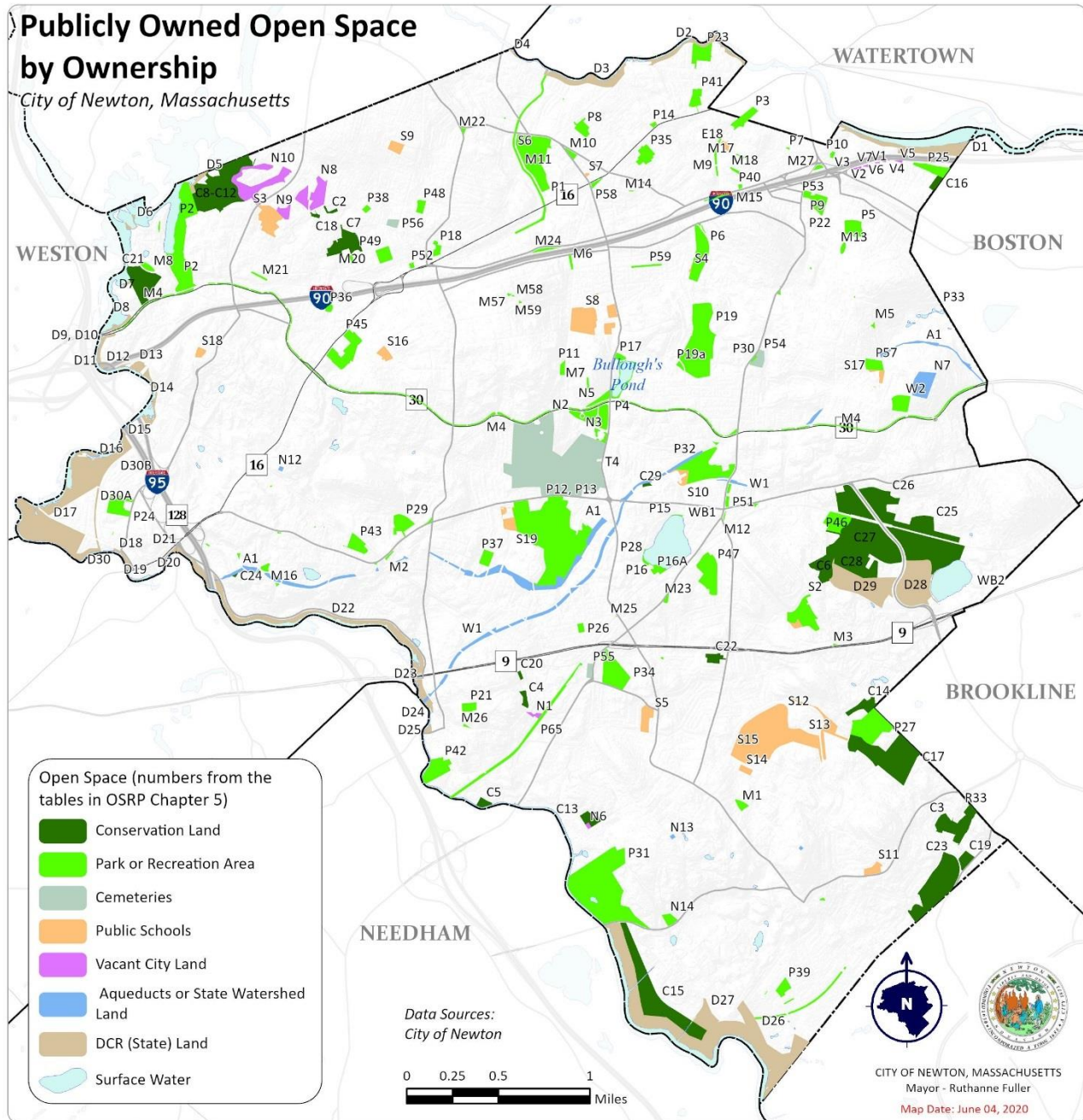


Table 5. Conservation Restrictions, Agricultural Preservation Restrictions, and Conservation Easements					
Map Code	CR Number	Name (Location)	Owner	SBL ID	Size (Acres)
CR1	1	Nahanton Woods Condos (210 Nahanton St)	Condominium	84034 0005	20.55
CR2	2	Oak Park Condos (27-101 Saco St)	Condominium	51046 0005	1.28
CR3	3	The Gables Condos (401-439 Dedham St)	Condominium	83036 0003BA	9.40
CR4	4	18 Paul St	Elaine Woo	62014 0004	0.19
CR5	5	Pomeroy House (84 Eldredge St)	Condominium	72008 0013	0.92
CR6/E9	6	The Kettle (JCC) (333 Nahanton St)	Combined Jewish Philanthropists	83035 0004	0.67
CR7	7	Winchester Park Condos (303-309 Winchester St)	Condominium	83028 0030	6.55
CR8	8	Ledgebrook Condos (207-297 Nahanton St)	Condominium	83036 0008B	14.11
CR9/E9	9	The Oak Grove (JCC) (333 Nahanton St)	Combined Jewish Philanthropists	83035 0004	3.27
CR10	10	Laura Estates (15 Laura Rd)	Omid Farokhzad	55038 0016	0.09
		Laura Estates (19 Laura Rd)	Sarinna & James Chiang	55038 0009	0.12
		Laura Estates (0 Laura Rd)	386 Quinobequin, LLC.	55038 0018	0.44
		Laura Estates (20 Laura Rd)	Laura P. Heras	55038 0021	0.77
CR11/E7	11	Hebrew College (160 Herrick Rd)	Hebrew College	65019 0045A	1.71
CR12	12	190 Elgin St	City of Newton	65004 0042	0.07
CR13	13	The Terraces (287 Langley Road)	Condominium	65019 0045B	1.72
CR14	14	25 Moorfield Rd	Todd Jick	63037 0018B	0.26
CR15	15	74 Longwood Rd	Michael S. Field Trustee	63037 0011	0.15
CR16	16	350 Boylston St	Condominium	82004 0043	0.78
CR17	17	190 Elgin St	City of Newton	65004 0041	0.33
CR18/N14	18	Angino Farm (303 Nahanton St)	City of Newton	83036 0009	2.17
CR19/C7	19	Dolan Pond Cons. Area (76 Webster Park)	City of Newton	33022 0036B	0.74
CR20	20	Conservation Easement (76 Webster Park)	Newton Housing Authority	33022 0036	0.02
CR21/R33	21	Hancock Estates (200 Estate Drive)	C S Kessler LLC	82037 0095	11.84
		Hancock Estates (31 & 36 Kessler Way)	Lauren Zuker Siff	82037 0082	0.03
		Hancock Estates (156 Harwich Rd)	Vladimir Zarkhin	82037 0080	0.61
		Hancock Estates	C S Kessler LLC	82037 0093	0.10

Table 5. Conservation Restrictions, Agricultural Preservation Restrictions, and Conservation Easements					
Map Code	CR Number	Name (Location)	Owner	SBL ID	Size (Acres)
CR22/R33	22	Kessler Woods Cons Area (Harwich Rd)	City of Newton	82037 0080A	0.92
CR23	23	Conservation Easement (74 Webster Park)	Habitat for Humanity (Kendra Jackson, Scott & Jessica Larosee)	33022 0036A	0.05
CR24	24	Champion Broadcasting (750 Saw Mill Brook Pkwy)	Champion Broadcasting System, Inc.	84010 0057	12.70
CR26/P16	26	Crystal Lake Park (0 Lake Ave)	City of Newton	62001 0003A	0.19
CR27/P16	27	Crystal Lake Park (230 Lake Ave)	Atila Habip	62001 0003	0.05
CR28/P33	28	Newton Commonwealth Golf Course (212 Kenrick St)	City of Newton	72039 0016	7.87
		Newton Comm. Golf Course (212 Kenrick St)	City of Newton	72039 0020	4.48
		Newton Comm. Golf Course (212 Kenrick St)	City of Newton	72039 0021	19.76
		Newton Comm. Golf Course (212 Kenrick St)	City of Newton	72039 0018	1.41
		Newton Comm. Golf Course (212 Kenrick St)	City of Newton	72039 0017	21.56
		Newton Comm. Golf Course (212 Kenrick St)	City of Newton	63001 0039	12.39
		Newton Comm. Golf Course (212 Kenrick St)	City of Newton	63001 0024A1	2.73
CR29	29	15 Bracebridge Rd	Gregory & Ila Fiete	64016 0015	1.54
CR30	30	Waban Hill Reservoir (Ward St)	City of Newton	63007 0001	5.08
CR31	31	Flowed Meadow Cons Area (30 Wabasso St)	City of Newton	41031 0053	0.02
CR32	32	Crystal Lake Park (20 Rogers St)	City of Newton	62001 0002	0.09
CR33	33	Saw Mill Brook Cons Area (0 Vine St)	City of Newton	82041 0022	0.85
		Kessler Woods Cons Area (200 Vine St)	City of Newton	82037 0003	0.29
239-88	239-88	77 Florence St	Condominium	82004 0074	1.99
261-00	261-00	Lasell Pond (0 Seminary Ave)	Lasell College	43046 0004	2.26
346-80	346-80	Hampton Place Condos (77 Ober Rd)	Luis Pedraza	82015 0109	0.84
CE1	--	Conservation Easement (1165 Chestnut St)	Sconnix Realty Trust	51045 0005	0.14
Total					176.10

Figure 36: Publicly Owned Open Space by Ownership (Codes from Section 5 tables)



Newton Parks, Recreation & Culture Controlled Land (Table 6)

PRC oversees a majority (over 20%) of public open space parcels in Newton. Land under PRC jurisdiction includes parks, playgrounds, tot lots, traffic circles, medians, and recreation facilities.

Managing Agency: All PRC owned lands are managed by PRC maintenance crews, with some assistance for median maintenance being provided by the City’s Department of Public Works.

Public Access: PRC land is predominantly used for recreation and all its lands are open to the public.

Figures 37-40 illustrate the locations of some of the most popular PRC sites in Newton.

Key to Abbreviations: Table 6	
Abbreviation	Meaning
Art 97	Protected under Article 97
BBC	Basketball Court
CR	Conservation Restriction (M.G.L. Ch. 184, Sec. 31-33)
CRF	Charles River Frontage
CVP	Certified Vernal Pool
N	Not Protected
NHR	National Historic Register
OLA	Off-Leash Area
P	Protected in Perpetuity
PF	Playing Field
PG	Playground
SBL ID	Assessor’s Database ID
TC	Tennis Court
UNKN	Unknown
WJ	Wetlands Jurisdiction (MA Wetlands Protection Act 310 CMR 10.00 or Newton Floodplain/Watershed Protection Ordinance Sec. 22-22)
WR	Wetlands Restriction (G.L. Ch. 131, Sec. 40A)

Table 6. Newton Parks, Recreation & Culture Controlled Land

Map Code	Parcel Name	Village	Zone	Size (Acres)	SBL ID	Current Use	Condition	Expanded Rec. Potential	Level of Protect.	Type of Grant
P1	Albemarle Field	Newtonville & West Newton	PUB	25.46	21022 0001	Active; Russell J. Halloran Sports & Recreation Complex, open green space, lit PFs, PG, tot lot, Gath Pool and Bathhouse, TC, BBC, fieldhouse, gazebo	Good/Fair	Athletic fields turf and lights; Gath Pool upgrade	Art 97	N/A
M1	Hartmann Park	Newton Centre		1.99	81009 0001	Passive; Neighborhood wooded traffic island	Excellent	Low potential		
P2	Auburndale Park/Lyons Park	Auburndale		28.83	41022 0001 (part); 41031 0036A; 41031 0037	Active; Portion of lot is Flowed Meadow Conservation area; PG, PF, BBC, TC, tot lot, fitness station area, grill and picnic area, fieldhouse, river skating, lit field w/concession and restrooms, parking area, undeveloped wooded area with trail; CRF, WJ	Good	Trail improvements		
P60	Beacon-Union-Langley Pocket Park	Newton Centre		0.26	61038 0001	Passive; Open green space; adopted parcel known as “Piccadilly Square”	Very Good	N/A		
M2	Beacon-Wyman Median	Waban	BU-1	0.18	53027 0001A	Passive; Sloped median between Beacon St and Wyman St	Good	N/A	N	
P3	Boyd Park	Nonantum	PUB	2.74	11020 0002	Active; Portion of lot is Lincoln Eliot School; PG, lit PF, BBC, continues into Watertown but fully maintained by Newton	Good	Athletic fields and access improvements	Art 97	LWCF Redevelopment
P4	Bullough’s Pond Park & Pond	Newtonville		1.41	24037 0010; 99099 0068	Passive; Pondsides seating area; WJ	Good	Low potential		
P5	Burr Park	Newton Corner		5.12	72009 0003	Active; PF, PG, TC, BBC, spray pad, recreation building, challenge course, parking	Good	TC and BBC renovation		N/A
P6	Cabot Park	Newtonville		11.58	13001 0001	Active; PG, PF, lit BBC, TC, tot lot, fieldhouse, bocce, fenced OLA	Fair	Accessible pathway network		
P61	Cabot Park (Pocket Park)	Newtonville		0.15	13002 0001	Passive; Pocket park, adj. to Cabot Park	Good	N/A		

Table 6. Newton Parks, Recreation & Culture Controlled Land										
Map Code	Parcel Name	Village	Zone	Size (Acres)	SBL ID	Current Use	Condition	Expanded Rec. Potential	Level of Protect.	Type of Grant
P52	Capt. Ryan Park (Police Park)	West Newton	PUB	1.83	33011 0001	Passive; Memorial pocket park	Good	N/A	Art 97	N/A
P7	Carleton Park	Newton Corner		0.11	71001 0011	Passive; Neighborhood pocket park	Excellent	N/A		
P9	Chaffin Park	Newton Corner		0.83	72004 0003	Passive; Lit walkway; National Historic Register	Good	Low potential		
P10	Charlesbank Park	Nonantum		0.46	71007 0041 -0043	Active; PG, small PF	Excellent	Low potential		
M11	Cheesecake Brook Greenway	West Newton		7.63	99099 0108 – 0110; 99099 0121	Passive; Linear park along Cheesecake Brook w/ seating area at Eddy St; WJ	Fair	Pathway/bike connections to Charles River		
P11	Clafin Playground	Newtonville		1.17	24025 0009A	Neighborhood park, sledding, OLA	Good	Low potential		
P12/ P13	Cold Spring Park	Newton Centre and Newton Highlands		69.46	54021 0002; 54021 0025 - 0026; 54022 0024; 54022 0032 - 0035; 54022 0049B, 0050A, 0051A, 0052A; 54022 0057 - 0059; 54022 0064 - 0066;	Active; PF, OLA, fitness stations along trail, TC, BBC, Farmers Market (June-Oct), parking; wooded, wet, Cold Spring Brook; WJ; WR#20, WR#21	Fair	Trail improvements		LWCF acquisition
P14	Colletti-Magni Park	Nonantum		0.47	14011 0010	Passive; Memorial pocket park w/seating	Excellent	N/A		N/A
M4	Comm. Ave Median	Various		20.65	N/A	Passive; Linear green space ~ 6 miles	Excellent	Access improvements, grant funding for greenway conversion		MassDOT Grant
P15	Cronin's Cove	Newton Centre		0.18	62001 0016	Passive; Lakeside pocket park, boat dock; WJ	Fair	Low potential		N/A
WB1	Crystal Lake	Newton Highlands	28.75	99099 9202	Active/Passive; Great Pond	Good	Low potential			
P16	Crystal Lake Park	Newton Highlands	PUB/SR2	1.99	62001 0001, 0002, 0003A	Passive; Bathhouse, dock, seasonal public swim area, seasonal fence, beach, lakeside pathway, parking; WJ; CR#26, CR#27, CR#32	Fair	Bathhouse/beach and access improvements	P	Community Preservation Act (partial)

Table 6. Newton Parks, Recreation & Culture Controlled Land

Map Code	Parcel Name	Village	Zone	Size (Acres)	SBL ID	Current Use	Condition	Expanded Rec. Potential	Level of Protect.	Type of Grant		
M12	Centre St Linear Park	Newton Centre	PUB	0.21	61035 0004	Passive; Village green space near MBTA	Excellent	N/A	Art 97	N/A		
P18	Davis Playground (Tom Torchia Playground)	West Newton		1.95	31016 0017	Active; PG, PF, BBC, spray pad, tot lot		Low potential				
P17	Dexter Rd Parcel	Newtonville	PUB	1.1	24038 0001	Passive; Wooded, Laundry Brook; WJ	Good	Low potential				
P6	Edmands Park (Cabot Woods)	Newtonville		33.17	13020 0001; 13021 0004; 22031 0001	Passive; Wooded, trails, esker, wet, Edmands Brook; WJ	Good	Trail improvements				
M5	Eliot Memorial Park	Newton Centre		0.06	73009 0019	Passive; Memorial park	Good	N/A				
M26	Elliot St./High St. Parcel	Upper Falls	MR2 PUB	0.24	51006 0001, 0002	Passive; Wooded slope, linear buffer	Good	N/A				
M6	Elmwood Park	Newtonville	PUB	0.64	24008 0001	Passive; Neighborhood traffic island	Good	Low potential				
P21	Emerson Playground	Upper Falls	MR1	2.6	51008 0001A1	Active; PG, PF, BBC, tot lot, open green space, gazebo, parking, adj. to community ctr.	Fair	Athletic field improvement				"Our Common Backyards"
P22	Farlow Park	Newton Corner	PUB	3.76	72004 0001	Active/Passive; PG, BBC, lit walkway, seasonal pond with footbridge; NHR	Good	Low potential				
P53	Farlow Tot Lot	Newton Corner		0.91	72004 0004	Active; Tot lot	Excellent	N/A				
M27	Firefighters' Memorial	Newton Center		0.58	N/A	Passive; Bell tower structure	Good	N/A				
M57/ M58/ M59	Forest Ave/ Otis St Medians	Newtonville		0.35	24006 0016, 0017; 99099 0027	Passive; Planted traffic islands	Good	N/A				
P23	Forte Memorial Park	Nonantum		6.02	11004 0013	Active; PG, tot lot, lit PF, lit BBC, life course trail, bocce; WJ	Excellent	Athletic field improvements—turf and lights		Urban Self Help #4 and #5 (formerly Allison Park)		
M3	Gasparri Park	Thompsonville		0.11	65010 0025	Passive; Veterans Memorial park/traffic island @ Rt. 9	Good	N/A		N/A		
M7	Grove Hill Park	Newtonville		0.41	24034 0001	Passive; Traffic island, wooded	Good	N/A				

Table 6. Newton Parks, Recreation & Culture Controlled Land										
Map Code	Parcel Name	Village	Zone	Size (Acres)	SBL ID	Current Use	Condition	Expanded Rec. Potential	Level of Protect.	Type of Grant
P24	Hamilton Playground (Lower Falls Playground)	Lower Falls	PUB	8.53	42021 0001	Active; Community Center, PG, PF, BBC, TC, open green space, parking	Very Good	Low potential	Art 97	N/A
W2	Heartbreak Hill Park at Waban Hill Reservoir	Chestnut Hill		5.06	63007 0001	Passive; Open reservoir, open green space, accessible pathways	Very Good	Phase I improvements underway		CPA purchase
P8	Horace Mann Playground	Newtonville		2.97	23001 0020A	Active; PG, PF, BBC, parking (formerly Carr Playground)	Good	Play equipment upgrade		N/A
P25	Hunnewell Playground	Newton Corner		4.57	71026 0024	Active; Neighborhood park, PG, PF, fenced OLA	Fair/Good	Access and off-leash area improvements		
P26	Hyde Playground	Newton Highlands		1.04	52041 0001	Active; Neighborhood park, PG, PF, garden/seating area	Good	Low potential		
M8	Islington Oval	Auburndale		1.47	41024 0001	Passive; Traffic island/neighborhood park	Excellent	Low potential		
P27	Kennard Park	Newton Centre		15.79	82004 0023	Passive; P&R HQ, wooded, orchard, historic perennial garden	Good	Low potential		
M9	Laundry Brook Reservation	Newton Corner		1.41	12001 0049	Passive; Linear open green space	Good	Low potential		
P28	Levingston Cove	Newton Highlands		0.5	62001 0004	Passive; Lakeside pocket park; WJ	Fair	Renovation design in place		
P62	Lewis - Washington Median	Nonantum		0.11	13002 0001	Passive; Lewis - Washington Pocket Park; Bus Stop	Good	N/A		
P34	Newton Highlands Playground (Joseph Lee Playground)	Newton Highlands		12.56	83003 0025	Active; Open green space, lit PFs, TC, BBC, PG, wooded, rocky outcrops, universally accessible path system, parking	Excellent	Low potential		
P29	Warren Lincoln Playground	Waban		5.42	53032 0013	Active; Open green space, PG, tot lot, PF	Excellent	Pedestrian access		
M10	Linwood Park	Newtonville		0.99	23003 0001	Passive; Traffic island w/ pathway	Good	N/A		
P30	Loring Park	Newton Centre		0.3	73001 0019	Passive; Linear open green space	Excellent	N/A		

Table 6. Newton Parks, Recreation & Culture Controlled Land											
Map Code	Parcel Name	Village	Zone	Size (Acres)	SBL ID	Current Use	Condition	Expanded Rec. Potential	Level of Protect.	Type of Grant	
P58	Lowell Park	Newtonville	PUB	0.58	23013 0001	Passive; Neighborhood historic park	Excellent	Low potential	Art 97	N/A	
P45	McGrath Playground (Warren Playground)	West Newton		10.55	32024 0006A	Active; Open green space, PFs, TC, fenced OLA, Cheesecake Brook; WJ	Good	Pedestrian pathway/access			
P31	Nahanton Park	Newton Centre		56.72	83035 0003, 0004A	Active; Nature Center, parking, fishing dock, canoe rental, PF, community gardens; open rec areas, wooded; CRF, CVP WJ; WR #10	Good	Nature Center renovations, access and trail improvements			Urban Self Help (2) #3 (formerly Novitiate)
P51	Newton Centre Green	Newton Centre		1.19	61033 0001; 61034 0002	Passive; Historic PK, City-sponsored seasonal event site	Good	N/A		N/A	
P63A/P63B	Newton Centre Library	Newton Centre		0.91	72004 0004	Passive; Public building, children’s reading area, parking; channelized brook	Excellent	N/A			
P32	Newton Centre Playground	Newton Centre		17.9	64032 0001; 64032 0003	Active; Open green space, “The Hut”, universally accessible PG and tot lot, PFs, LGTD BBC, clay TC, sledding, unfenced OLA, Hammond Brook; WJ	Excellent	Construct final segment of pathway network			
P33	Newton Common-wealth Golf Course	Newton Centre		76.5	63001 0024A1 63001 0039; 72039 0016 - 0018 72039 0020 - 0021	Active; Public golf course, CGC Skiing, wooded, Strong's Brook and Pond; WJ,	Good	Maintenance building renovation design in the works			Urban Self Help (formerly Chestnut Hill Golf Course)
M15	Veterans Memorial Park	Newton Corner		0.56	12015 0014	Passive; Memorial park	Good	N/A			
P42	Officer Bobby Braceland Playground (Upper Falls Playground)	Upper Falls		8.77	51045 0003	Active; Open green space, tot lot, PFs, TC, BBC, unfenced OLA, parking; CRF, WJ	Fair	Access improvements		N/A	
M25	Officer English Park	Newton Highlands		0.02	99099 9821	Passive; Raised brick planted seating area	Good	N/A			
M60	Overlook Park Oval	Chestnut Hill	0.04		Passive; Traffic island/cul de sac	Good	N/A				

Table 6. Newton Parks, Recreation & Culture Controlled Land

Map Code	Parcel Name	Village	Zone	Size (Acres)	SBL ID	Current Use	Condition	Expanded Rec. Potential	Level of Protect.	Type of Grant
M13	Kendrick Park	Newton Corner	PUB	0.72	72008 0001	Passive; Traffic island w/ pathway	Good	N/A	Art 97	N/A
P35	Pellegrini Park	Nonantum		4.21	14016 0033	Active; Memorial park, PG, lit PFs, TC, half BBC, tot lot, shade shelter, bocce, Community Centre, parking	Fair	Athletic field and lights improvement		
M14	Prescott St Oval	Newtonville		0.08	23015 0018A	Passive; Traffic island	Good	N/A		
P36	Rev. Ford Playground	Auburndale		0.81	33006 0061 part	Active; PG, remaining portion of lot is PRC lot	Fair	Complete renovation and expansion		
P37	Richardson Playground	Waban		2.98	53016 0007	Active; Open green space, PG, lit PF, tot lot	Good	Low potential		
P38	River Street Playground	West Newton		0.75	33034 0049	Active; Open green space, PG, tot lot	Fair	Upgrade play equipment		
M60	Saw Mill Brook Parkway	Oak Hill Park		3.98	N/A	Passive; Open median/greenbelt	Good	N/A		
P39	Solomon Schechter Playground	Oak Hill		2.93	84019 0001	Active; PG, PF, TC, tot lot (formerly Memorial Playground)	Good	Low		
P40	Spears Park	Newton Corner	MR1	0.32	12003 0001	Passive; Pocket park	Excellent	Improve access and amenities	UNKN	
P41	Stearns Park	Nonantum	PUB	3.44	11010 0002A, 0007	Active; PG, tot lot, TC, BBC, PF	Excellent	Pathway improvements	Art 97	MassWorks Grant (partial)
see S2	Thompsonville Playground	Thompsonville		0	65014 0046	Active; Half BBC, upper PFs (Note: Due to lot being shared with Bowen School, acreage not counted)	Very Good	Access improvements		
P65	Upper Falls Greenway	Upper Falls		8.86	99099 9820	Passive; Mile-long rail trail; CRF, WJ	Excellent	Construct extension using MassWorks grant funding		
UNKN	Waban Common	Waban		0.08	N/A	Passive; Village green space/traffic island	Excellent	N/A		N/A
M17	Waban Park Oval	Newton Corner		0.32	12004 0033	Passive; Neighborhood traffic island	Good	N/A		

Table 6. Newton Parks, Recreation & Culture Controlled Land										
Map Code	Parcel Name	Village	Zone	Size (Acres)	SBL ID	Current Use	Condition	Expanded Rec. Potential	Level of Protect.	Type of Grant
P43	Waban Playground (Angier School)	Waban	PUB	4.72	55010 0049	Active; PG, PF, TC, BBC	Fair	Athletic field renovation	Art 97	N/A
M16	Waban/Alban Island	Waban		0.86	55023 0001	Passive; Traffic island	Good	Low potential		
M24	Walker Park	Newtonville		0.39	21031 0001	Passive; Linear open green space	Fair	Low potential		
M18	Walnut Park	Newton Corner		0.54	12005 0028	Passive; Neighborhood traffic island	Good	N/A		
P57	Ward Park	Newton Centre		3.45	73016 0022	Active; PFs	Good	Athletic field and access improvements		
P59	Washington Park	Newtonville		1.06	22012 0001	Passive; Historic park, lit	Excellent	Low potential		
P46	Webster Park (Warren St Playground)	Newton Centre		7.2	65002 0013	Passive; Open green space, wooded, Thompsonville Brook; WJ	Excellent	Access improvements		
M20	Webster Park	West Newton		0.35	33021 0001	Passive; Traffic island	Good	N/A		
P47	Weeks Park	Newton Centre		11.13	62016 0013	Active/Passive; Tot lot, PFs, TC, raised planted seating area, parking	Excellent	Athletic fields and access improvements		
P48	Wellington Playground	West Newton		1.93	33030 0020	Active; Neighborhood green space, tot lot, PF, BBC, TC, garden	Good	Access improvements		
P49	West Newton Common	West Newton		3.63	33023 0001	Active; Park, tot lot, swings, PFs	Excellent	Play equipment and access improvements		
M21	Wolcott Park	Auburndale		0.55	44027 0001	Passive; Traffic island with gardens	Excellent	N/A		
M28	Unnamed Medians	Various		0.04	99099 0079	Traffic island/Median	N/A			
M29				0.22	99099 0077					
M30				0.11	99099 0076					
M31			0.27	N/A						
M32			0.09	N/A						
M33			0.15	99099 0083						
M34			0.29	53034 0019						
M35			0.20	64039 0008						

Table 6. Newton Parks, Recreation & Culture Controlled Land

Map Code	Parcel Name	Village	Zone	Size (Acres)	SBL ID	Current Use	Condition	Expanded Rec. Potential	Level of Protect.	Type of Grant
M36	Unnamed Medians	Various	PUB	0.23	99099 0097	Traffic island/Median	N/A	N/A	N	N/A
M37				0.06	99099 0098					
M38				0.29	99099 0099					
M39				0.05	N/A					
M40				0.01	N/A					
M41				0.04	N/A					
M42				0.06	72023 0001					
M43				0.16	72026 0016					
M44				0.02	N/A					
M45				0.02	N/A					
M46				0.02	N/A					
M47				0.04	N/A					
M48				0.05	N/A					
M49				0.02	N/A					
M50				0.08	N/A					
M51				0.09	N/A					
M52				0.02	N/A					
M53				0.04	N/A					
M54				0.00	N/A					
M55				0.08	13001 0002					
M56	0.03	N/A								
M57	0.07	24006 0017								
M58	0.17	24006 0016								
M59	0.10	99099 0027								
M62	0.03	N/A								
			Total	565.94						

Figure 37: Playing Fields and Courts

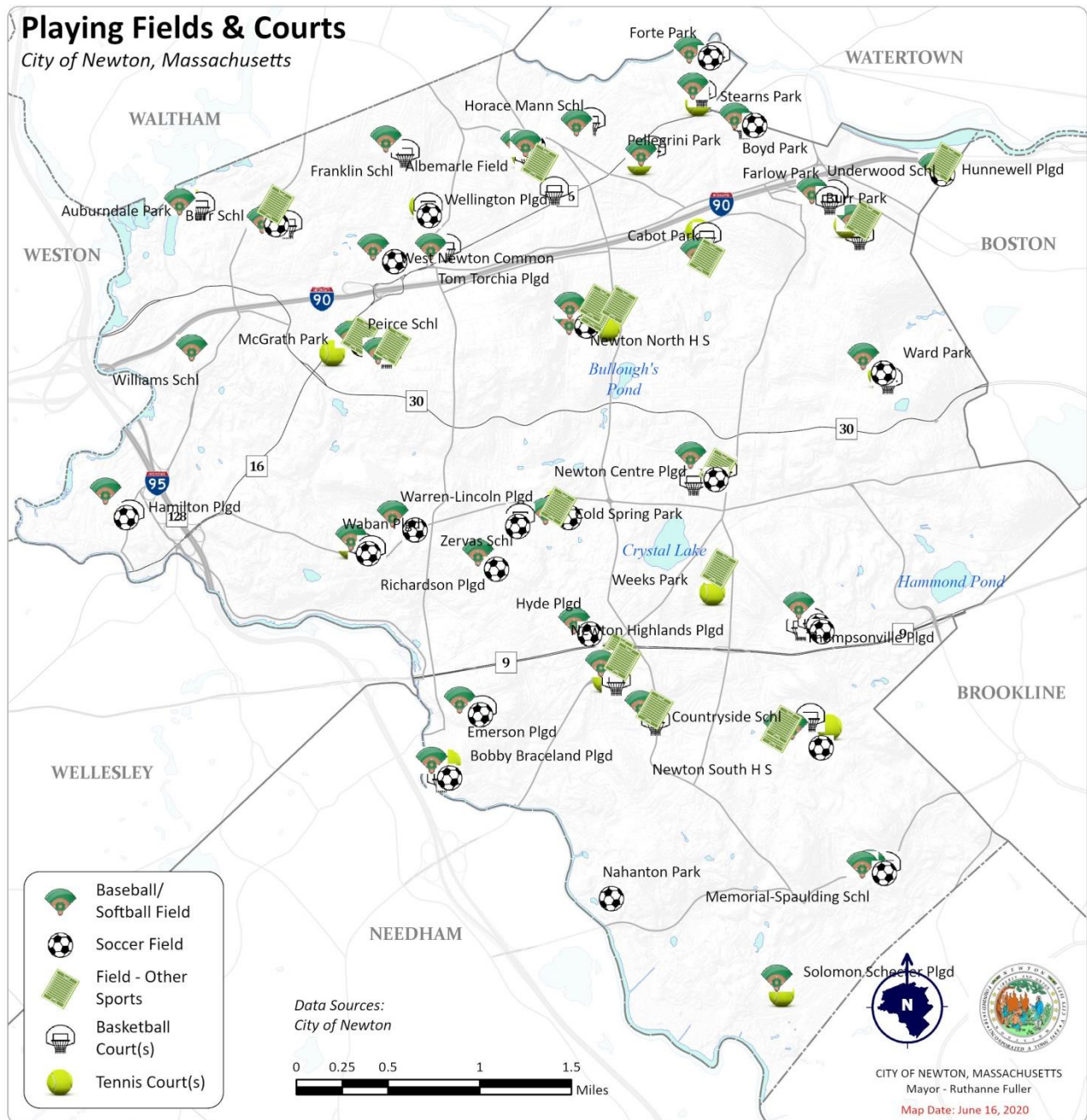


Figure 38: Playgrounds, Tot Lots, and Dog Parks

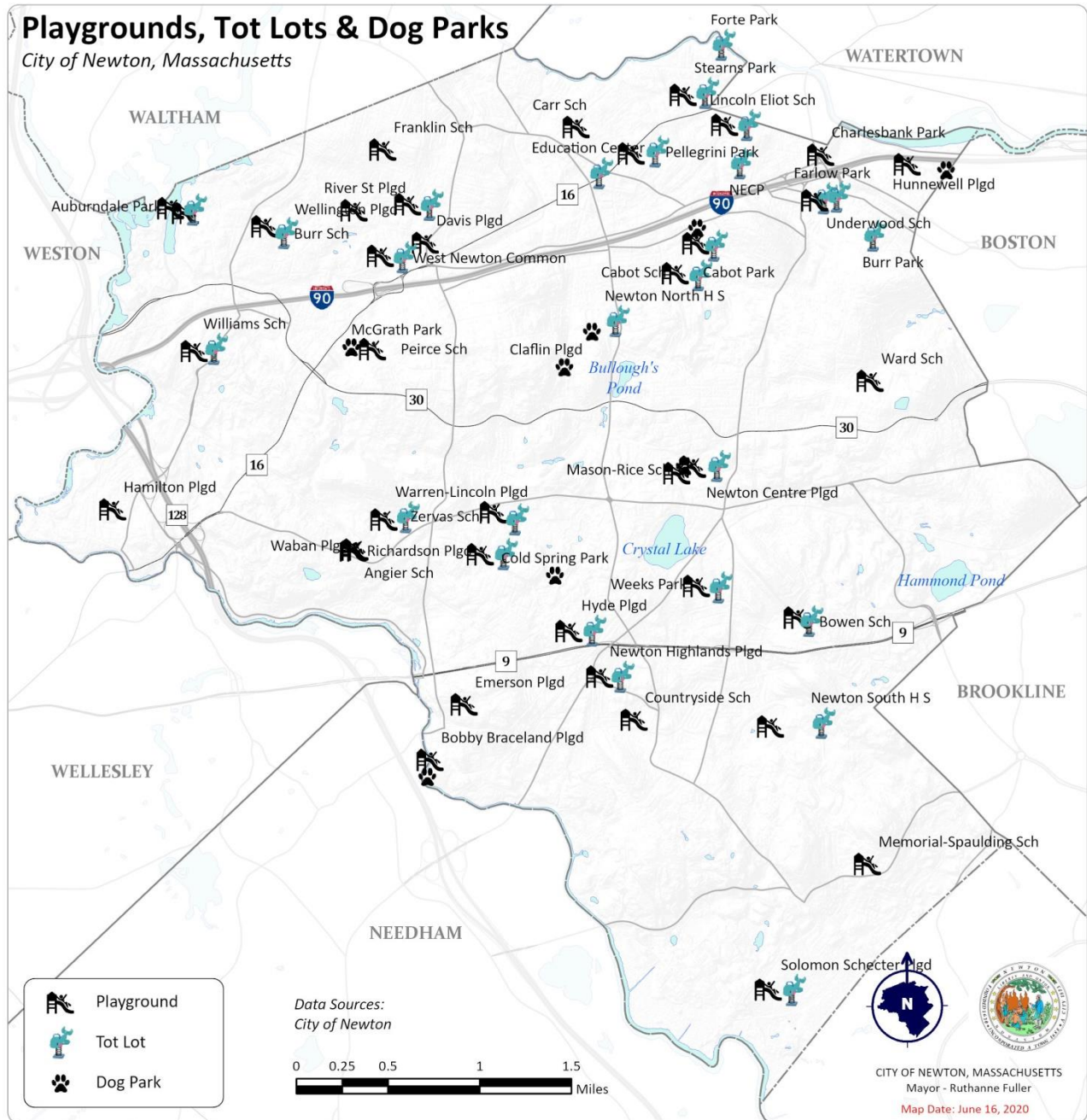


Figure 39: Aquatic Recreation Facilities

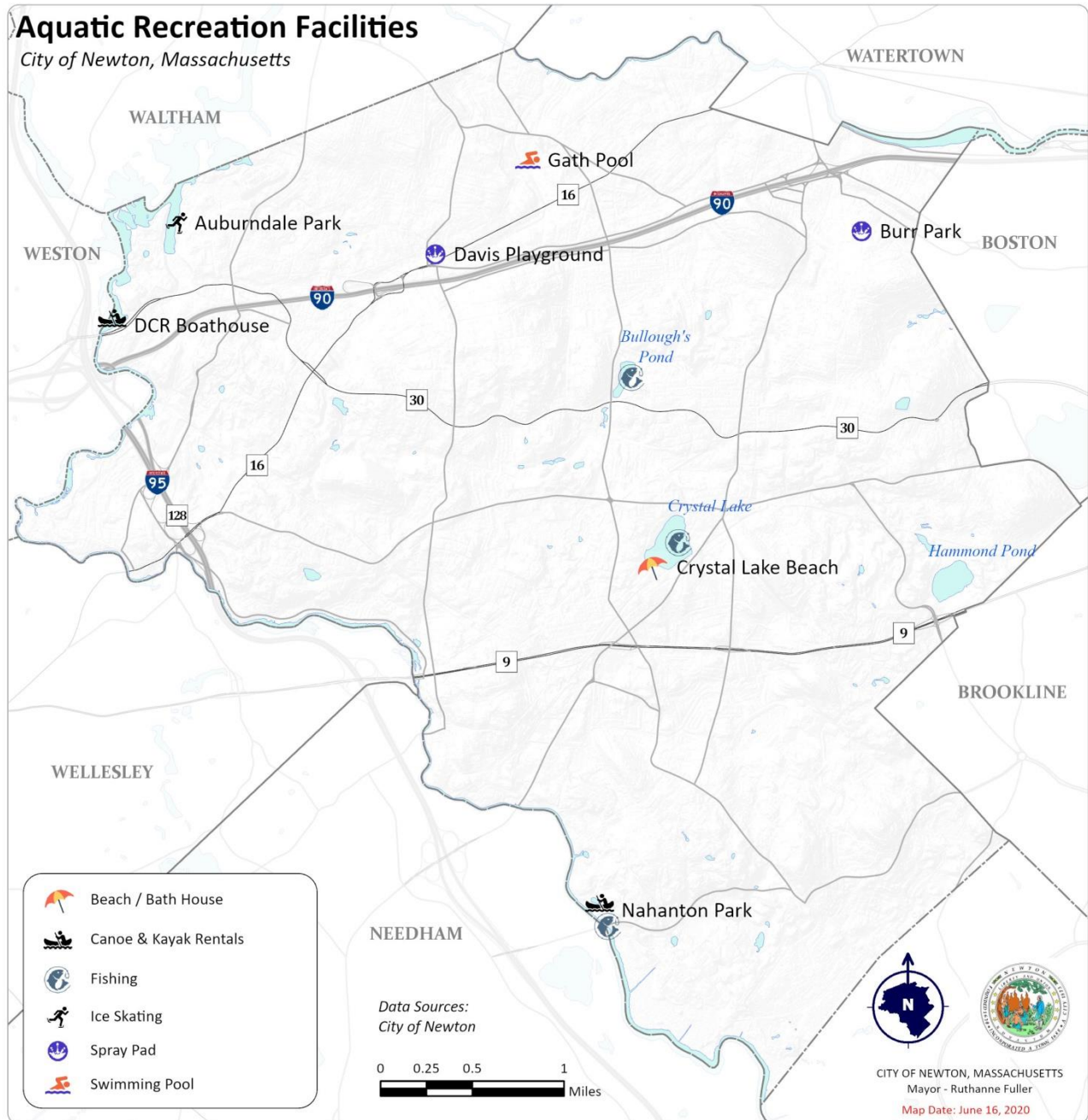
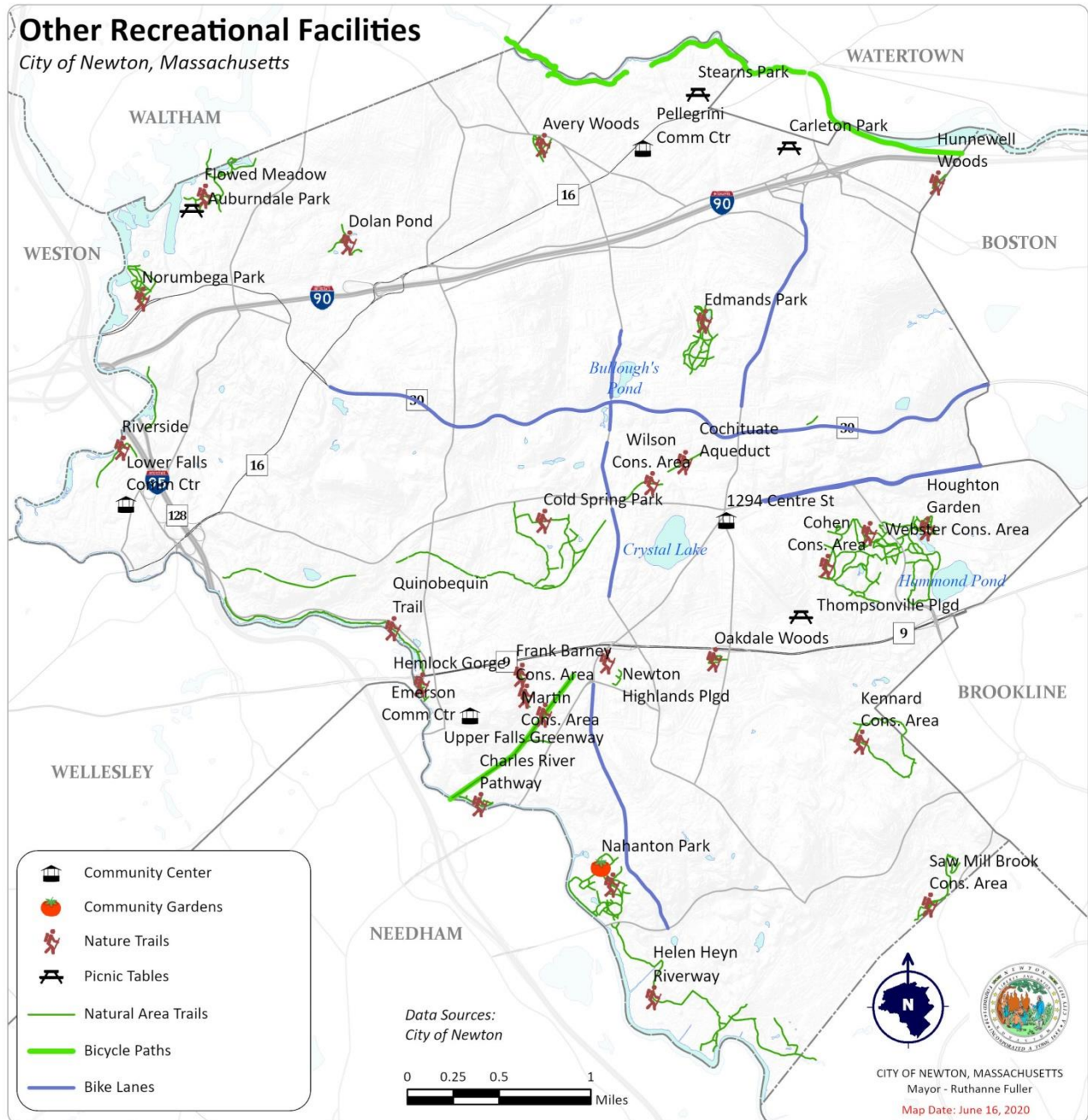


Figure 40: Other Recreation Facilities



Newton Conservation Commission Controlled Land (Table 7)

Newton’s Conservation Commission owns 22 parcels of woods, ponds, and marshes, totaling over 300 acres. Of those parcels, 14 contain trails used for walking and passive recreation. These conservation lands provide many values including water resources (natural areas filter stormwater and recharge wetlands, streams, and rivers), wildlife habitat (native animals rely on healthy ecosystems for breeding, nesting, food, shelter, and hibernation), passive recreation, and overall health and well-being.

Managing Agency: Several partners and organizations, including the City’s annual maintenance contractor, volunteer stewards, Eagle Scouts, and Newton Conservators work with the Conservation Commission to ensure that these cherished lands are being maintained.

Public Access: All Conservation Commission controlled parcels are open to the public, but several parcels are not trailed and maintained in a natural state which can make navigating the parcel difficult.

Key to Abbreviations: Table 7	
Abbreviation	Meaning
Art 97	Protected under Article 97
CR	Conservation Restriction (M.G.L. Ch. 184, Sec. 31-33)
CRF	Charles River Frontage
CVP	Certified Vernal Pool
NHR	National Historic Registry
NVS	Natural Valley Storage Area “B”
P	Protected in Perpetuity
SBL ID	Assessor’s Database ID
WJ	Wetlands Jurisdiction (MA Wetlands Protection Act 310 CMR 10.00 or Newton Floodplain/Watershed Protection Ordinance Sec. 22-22)
WR	Wetlands Restriction (G.L. Ch. 131, Sec. 40A)

Table 7. Newton Conservation Commission Controlled Land

Map code	Conservation Area Name	Zone	Size (Acres)	SBL_ID	Current Use	Condition	Expanded Rec. Potential	Level of Protect.	Type of Grant
C2	Auburndale Yard Conservation Area	PUB	0.78	44017 0109	Development buffer; wooded	Good	Potential new trail to serve as cut-through	Art 97	N/A
C3	Baldpate Meadow Conservation Area		4.86	82037 0079	Wooded, wet; WJ, WR#7	Good	None	Art 97	
C4	Frank Barney Conservation Area		1.67	51019 0002 - 0005	Wooded slope	Fair	Trail improvements	Art 97	
C5	Charles River Pathway Conservation Area		1.57	51046 0013 - 0016	Wooded; CRF, WJ; CR#2	Good	Trail improvements and stair connection to P65	Art 97/P	Urban Self-Help
C6	Cohen Conservation Area	PUB	8.28	65004 0001, 0001G; 65004 0042	Wooded, rocky outcrops; wet; Thompsonville Brook; WJ; CR#12 & CR#17	Excellent	Refresh trail blazing and signage	Art 97/P	Urban Self-Help (partial)
		SR2		65007 0001					
C7	Dolan Pond Conservation Area	PUB MR1	8.41	33017 0005 - 0011	Wooded, wet, Banana Pond, Quinn Pond, Dolan Pond; WJ; CR#19, WR#2	Good	Trail improvements to extend accessible trail sections	Art 97/P	Urban Self-Help
				33017 0015					
				33019 0008 - 0012; 33022 0035, 0036B					
C8	Flowed Meadow Conservation Area and Access Road	PUB	3.5	41031 0044, 0047	Wooded, wet, Purgatory Cove; WJ	Excellent	Refresh trail blazing and signage	Art 97/P	Urban Self-Help (partial)
C10		PUB	21.95	41031 0043 part	68, 71, 30 Wabasso St; wooded, wet; WJ; CR#31; WR#1; see N10				
					C11				
C12		MAN	0.11	41032 007	Access road to Flowed Meadow from Riverview Ave				

Table 7. Newton Conservation Commission Controlled Land									
Map code	Conservation Area Name	Zone	Size (Acres)	SBL_ID	Current Use	Condition	Expanded Rec. Potential	Level of Protect.	Type of Grant
C13	Goddard-Christina Conservation Area	PUB	4.35	83033 0032 - 0035	Wooded, wet; WJ; WR#9	Fair	None	Art 97	Urban Self Help
C14	Hahn Brook Conservation Area	PUB	4.36	82004 0024A	Wooded, wet Hahn Brook; WJ	Poor	None	Art 97	N/A
C15	Helen Heyn Riverway Conservation Area	PUB	30.5	84034 0002	Wooded, wet, Country Club Brook, College Brook; WJ, WR#11	Good	Trail improvements (bridge over College Brook)	Art 97	
C16	Hunnewell Woods Conservation Area	PUB	1.62	71026 0014 - 0017	Wooded slope	Fair	None	Art 97	Urban Self Help
C17	Kennard Conservation Area	PUB	32.28	82004 0001, 0002; 82004 0020, 0021	Wooded, wet, restoration meadow, South Meadow Brook; WJ; WR#22	Good	Improve boardwalks and add water bars near restoration area	Art 97	N/A
C18	Kerry Court Conservation Area	PUB	0.66	44017 0114	Wooded, Brunnen Brook; WJ	Good	None	Art 97	
C19	Kessler Woods Conservation Area	PUB	11.01	82037 0003	Wooded, wet, unnamed stream, Saw Mill Brook; WJ; CR#33; WR#7	Fair	Trail system development underway	P	Community Preservation Act
		SR3		82037 0094, 0080A	Wooded, wet, unnamed stream, Saw Mill Brook; WJ; CR#21; WR#7				
C20	Martin Conservation Area	PUB	0.57	51015 0017 - 0020	Wooded slope, rock outcrops	Good	Trail improvements	Art 97	N/A
C21	Norumbega Park Conservation Area	PUB	13.42	41023 0002; 41023 0021 - 0027	Wooded, knolls, open field, slope restoration; CRF, WJ	Good	Transition loop trail from wood chips to stone dust for accessibility	Art 97	

Table 7. Newton Conservation Commission Controlled Land

Map code	Conservation Area Name	Zone	Size (Acres)	SBL_ID	Current Use	Condition	Expanded Rec. Potential	Level of Protect.	Type of Grant
C22	Oakdale Woods Conservation Area	PUB	2.47	81036 0012 - 0015; 81037 0013 - 0021	Wooded, rock outcrops, Stearns Brook; WJ	Good	Trail improvements	Art 97	Urban Self Help
C23	Saw Mill Brook Conservation Area	PUB	28.71	82041 0007B; 82041 0021, 0021A; 82041 0022, 0023	Wooded, wet, rocky outcrops, Sawmill Brook; WJ; CR#33; WR#8	Good	Refresh trail blazing and signage. New boardwalks.	Art 97/P	Urban Self Help/ Community Preservation Act
C24	Varick Hill Conservation Area	SR2	0.19	55027 0017	Wooded	Fair	None	Art 97	N/A
C25	Webster Conservation Area - Houghton Garden	PUB	9.8	63016 0008A, 0008B	Historic natural & rock garden; wooded, wet, Hammond Brook, CVP; WJ, WR#4, NHR	Excellent	Pond hydro-raking and trail restoration project underway	Art 97	Urban Self Help (partial)
C26	Webster Conservation Area - Old Deer Park	PUB	14.06	63016 0011, 0013, 0014A, 0015	Open field, some specimen trees, rocky outcroppings; partially wooded, wet, Hammond Brook; WJ	Fair	Trail development underway	Art 97	N/A
C27	Webster Conservation Area - East and West	PUB	79.98	63037 0030; 65001 0001 - 0005; 65008 0001 - 0002	Wooded, rocky outcrops, wet, Hammond Brook, Hammond Pond, 3 CVP; WJ, WR#5	Good	Refresh trail blazing and signage	Art 97	
C28	Webster Conservation Area – Webster Woods	PUB	17.7	65008 0003	Wooded, wet, rocky outcrops, CVP; WJ; acquired using CPA funds – CR in progress	Good	Refresh trail blazing and signage	P	
C29	Wilson Conservation Area	PUB	0.5	64016 0023	Wooded; CR#29	Fair	None	Art 97	
Total			310.79						

Newton School Department Controlled Land (Table 8)

School Department controlled land consists primarily of school buildings and parking areas, but some also include open space resources such as playing fields, tennis and basketball courts, and playgrounds. Parcels in this Table noted with 2 map codes (e.g., S1/P43) are referenced on both this table and in Table 3 (Parks, Recreation & Culture) due to shared use.

Managing Agency: Open space resources on School Department controlled land is managed by the Parks, Recreation & Culture Department maintenance teams. The Public Buildings and School Department are responsible for managing the school structures.

Public Access: Open space resources on School Department controlled land are open to the public.

Expanded Recreational Potential: Most of these parcels are at the limit in terms of opportunities for expanded recreational opportunities, but ADA level access from school buildings to recreational facilities can be improved.

Protection Status: Parcels under School Department control do not qualify for protection under Article 97; therefore, have no formal protection.

Key to Abbreviations: Table 8	
Abbreviation	Meaning
BBC	Basketball Court
PF	Playing Field
PG	Playground
SBL ID	Assessor’s Database ID
TC	Tennis Court
WJ	Wetlands Jurisdiction (MA Wetlands Protection Act 310 CMR 10.00 or Newton Floodplain/Watershed Protection Ordinance Sec. 22-22)
WR	Wetlands Restriction (G.L. Ch. 131, Sec. 40A)

Table 8. Newton School Department Controlled Land					
Map Code	Name	Zone	Size (Acres)	SBL ID	Current Use
S1/P43	Angier Elementary School	PUB	1.98	55010 0056	Adjacent playground and tot lot
S20/P5	Bigelow Middle School	PUB	2.81	72010 0001	Adjacent to Burr Park & Playground
S2	Bowen Elementary School	PUB	11.54	65019 0046	BBC, PFs, PG
S3	Burr Elementary School	PUB	8.65	44035 0095	Basketball court, playing fields, playground; former landfill site
S4/P6	Cabot Elementary School	PUB	1.78	22008 0008	PG, adjacent to Cabot Park
S5	Countryside Elementary School	PUB	7.39	83006 0011	BBC, PFs, PG; South Meadow Brook; WJ
S6/P1	Day Middle School	PUB	8.57	21022 0002	Adjacent to Albemarle Field; wooded, Avery Woods
S7	Education Center	PUB	3.78	23004 0010	School Department offices

Table 8. Newton School Department Controlled Land					
Map Code	Name	Zone	Size (Acres)	SBL ID	Current Use
S8	Newton North High School	PUB	26.93	24017 0007; 24018 0001	Stadium, track, PFs, TC, Dickinson Field, Walnut Street Field
S9	Franklin Elementary School	PUB	5.45	34037 0021	BBC, PFs, PG
S21/P8	Horace Mann Elementary School	PUB	1.59	21022 0001A	Adjacent to former Carr School Playground
S22/P3	Lincoln-Eliot Elementary School	PUB	1.68	11020 0001; 11020 0002 part	BBC, PFs, PG1, tot lot
S10/P32	Mason Rice Elementary School	PUB	3.99	64032 0005	Portion of tot lot, adjacent to Newton Centre Playground; Hammond Brook; WJ
S11	Memorial Spaulding Elementary School	PUB	5.59	82021 0001	BBC, PFs, PG, tot lot
S13	Newton South High School	PUB	71.17	81051 0051; 81051 0047	Track with risers, PFs, TC; wooded, wet; WJ; WR#16, WR#17
S14	Brown Middle School	PUB	8.27	81005 0011	Adjacent to NSHS and Oak Hill Middle
S15	Oak Hill Middle School	PUB	10.47	81051 0052; 81006 0001	PFs; WJ
S16	Peirce Elementary School	PUB	4.9	32021 0005; 32021 0006	BBC, PFs, PGs
S23/P22	Underwood Elementary School	PUB	1.01	72002 0003	Adjacent to Farlow Park
S17/P57	Ward Elementary School	PUB	3.16	73016 0021	PFs, PG, TC, adjacent to Ward Park
S18	Williams Elementary School	PUB	3.1	43031 0002, 0003	PFs, PG
S19/P12	Zervas Elementary School	PUB	6.52	54013 0003	BBC, PFs, PG, adjacent to Cold Spring Park
Total			200.33		

Newton General Municipal Controlled Land (Table 9)

Newton owns a number of open space parcels that are not under the jurisdiction of the Conservation Commission, PRC, or School Department.

Managing Agency: The majority of these parcels are managed by the City’s Department of Public Works, though the City Hall grounds (N2) are maintained by PRC maintenance crews. Angino Farm is managed by a non-profit organization licensed by the City. The three historic cemeteries are not managed by the City and are left undisturbed except for sidewalk mowing.

Expanded Recreational Potential: Some of these parcels are currently vacant land and so present an opportunity for conversion into open space resources for expanded recreational opportunities or pocket parks.

Key to Abbreviations: Table 9	
Abbreviation	Meaning
APR	Agricultural Preservation Restriction
CR	Conservation Restriction (M.G.L. Ch. 184, Sec. 31-33)
L	Limited, or Temporary Protection
N	Not Protected
NHR	National Historic Register
P	Protected in Perpetuity
SBL ID	Assessor’s Database ID
UNKN	Unknown
V	Vacant (primarily vacant)
WJ	Wetlands Jurisdiction (MA Wetlands Protection Act 310 CMR 10.00 or Newton Floodplain/Watershed Protection Ordinance Sec. 22-22)

Table 9. Newton General Municipal Controlled Land								
Map Code	Name	Address	Zone	Size (Acres)	SBL	Current Use	Level of Protect.	Open to Public
N1	Elliot Street DPW Yard	0 Chandler Pl	PUB	1.05	51029 0034 - 0036	V, Wooded; Adj. to UF Fire Sta. & DPW yard	N	No
N2	City Hall - Grounds & War Memorial Circle	1000 Comm. Ave		9.92	64001 0001	City Hall; lawn, Salvatore Balsamo Millennium Park, ponds, Cold Spring Brook; WJ; NHR	L	Yes
N5	Lakeview Ave parcel	0 Comm. Ave		2.03	24036 0001	V; wooded slope facing City Hall grounds	N	Yes
N7	Waban Hill Reservoir	166 Waban Hill Rd		8.55	63008 0013	Covered reservoir	L	No
N8	Pine St Landfill	0 Pine St		10.18	44035 0086; 44035 0119	V; wooded, filled wetland	N	No
N9	Pine St Rear	0 Pine St		2.97	44035 0097	V; wooded, filled wetland; several encroachments	N	No

Table 9. Newton General Municipal Controlled Land								
Map Code	Name	Address	Zone	Size (Acres)	SBL	Current Use	Level of Protect.	Open to Public
N10	Rumford Ave DPW Yard/Landfill	211 Lexington St		26.89	41031 0043 part	Solar Farm, waste drop-off facility; WJ; see C10	N	No
N11	Cheesecake Brook Reservation	Albemarle Road		7.77	99099 0006 --0009	V; grass with some trees and shrubs; WJ	L	Yes
N12	Stanton Water Tower	160 Stanton Ave		0.39	43045 0033	Water tower; open hillside, some trees	N	No
N13	Countryside Water Tower	0 Dedham St	PUB	0.39	83036 0003A	Water tower; wooded area	N	No
N14	Angino Farm	303 Nahanton St		2.26	83036 0009	Community farm; overseen by Farm Commission; APR; CR#18	P	Partial
V1	City-owned vacant parcel	Braemore Road	SR3	0.01	71019 0006	V	N	No
V2	City-owned vacant parcel	Hunnewell Ave	PUB	0.24	71019 0005	V		
V3	City-owned vacant parcel	Hunnewell Ave		0.39	71032 0005	V		
V4	City-owned vacant parcel	Fairview Street		0.02	71021 0011	V		
V5	City-owned vacant parcel	Fairview Street		0.23	71024 0015	V		
V6	City-owned vacant parcel	Oakleigh Road	SR3	0.11	71021 0001	V		
V7	City-owned vacant parcel	Oakleigh Road	SR3	0.11	71020 0003	V		
P54	East Parish Burying Ground	Centre Street	PUB	2.88	73001 0018	Historic cemetery	UNKN	
P55	South Parish Burying Ground	Winchester Street		1.38	51028 0029	Historic cemetery	UNKN	
P56	West Parish Burying Ground (River St Cemetery)	River Street		1.62	33034 0009	Historic cemetery	UNKN	
			Total	71.63				

Cochituate Aqueduct – Newton Parks, Recreation & Culture, and Private Lands (Table 10)

Managing Agency: Most of the Cochituate Aqueduct is owned and managed by the City of Newton through the PRC, but a few parcels are in private ownership.

Public Access: All City-owned parcels are open to the public for passive recreation and a number of the private parcels within the alignment have easements that allow public use.

Expanded Recreational Potential: The City-owned portions of the Cochituate Aqueduct (along with much of the state-owned Sudbury Aqueduct) are important passive recreation resources for Newton and could potentially be expanded to improve connectivity to other trails.

Key to Abbreviations: Table 10	
Abbreviation	Meaning
Art 97	Protected under Article 97
N	Not Protected
SBL ID	Assessor’s Database ID
UNKN	Unknown
V	Vacant (primarily vacant)

Table 10. Cochituate Aqueduct (Newton PRC and Privately Owned Lands)							
Map Code	Parcel Name/Location	Ownership	Zone	Size (Acres)	SBL ID	Current Use	Level of Protect.
A1	Beethoven Ave	City of Newton	PUB	0.72	53016 0002	V, wooded	Art 97
	Allen Ave			1.03	53022 0009	V, wooded	
	Upland Rd			0.44	53023 0004	V, wooded	
	Chestnut St			0.55	53024 0007	V, wooded	
	Homestead St			0.10	53024 0008	V, wooded, lawn	
	Woodward St-Wyman St			0.35	53026 0021	V, wooded	
	Beethoven Ave			1.63	54012 0010	V, wooded	
	Winslow Rd			4.53	54017 0013	V, wooded	
	Wenham Rd			8.39	54021 0001	V, wooded; S perimeter of P12/P13	
	Adj. 136 Quinobequin Rd			1.29	55027 0016	V, wooded	
	136 Quinobequin Rd			0.19	55028 0001	Pumping Station	
	Mossfield Rd-Waban Ave			0.006	55037 0006	Median, trees, path	
	Quinobequin Rd			0.11	55043 0007	V, wooded, lawn	
	Walnut St		0.53	62004 0015	Whole Foods pkg lot		
	Beacon St		0.02	62004 0015A	Whole Foods pkg lot		
	Cochituate Aqueduct		4.31	63001 0002	Wooded		
	Beacon St		0.59	64014 0012	V, wooded, grass		
	Cochituate Aqueduct		0.02	64014 0012	Wooded		
	Pleasant St		0.20	64016 0013	V, wooded, grass		

Table 10. Cochituate Aqueduct (Newton PRC and Privately Owned Lands)							
Map Code	Parcel Name/Location	Ownership	Zone	Size (Acres)	SBL ID	Current Use	Level of Protect.
A1	Hancock Ave	City of Newton	PUB	1.34	64016 0024	V, wooded	Art 97
	Pleasant St			2.28	64032 0006	V, wooded; N perimeter of P32	
	Homer St/Grafton St			0.17	64039 0008	Island, trees, lawn	
	Montrose St			0.29	73016 0022	Crosses Ward Park	
	Commonwealth Ave			1.13	73042 0019	V, trees, lawn	
	Waban Ave: Neshobe Rd-Varick Rd			1.31	99099 0078	Median, trees	
	Waban Ave-Neshobe Rd			0.19	99099 0080	Median, trees	
	Mossfield Rd-Waban Ave			0.43	99099 0081	Median, trees	
	Waban Ave: Carlton Rd-Mossfield Rd			0.85	99099 0082	Median, trees	
	Waban Ave: Crofton Rd-Carlton Rd			0.05	99099 0084	Median, trees	
	Waban Ave: Crofton Rd-Carlton Rd			2.68	99099 0085	Median, trees	
	Waban Ave: Crofton Rd-Carlton Rd			0.38	99099 0086	Median, trees	
	Waban Ave: Nehoiden Rd-Crofton Rd			1.42	99099 0087	Median, trees	
	Collins Rd-Waban Ave			0.16	99099 0088	Island, shrubs, trees	
A1	50 Grafton St	Alkis Malkrides	SR2	0.08	64040 0008	Residential lot	N
	76 Homer St	Avraham & Judith Arazi Tr.		0.11	64032 0041A	Res. lot, wooded, shed	
	615 Comm. Ave	Carolyn D. Allen		0.003	73050 0008	Residential lot	
	629 Comm. Ave	Condominium		0.06	73050 0009	Condos	
	34 Collins Rd	Connie French		0.005	55048 0034	Residential lot	
	64 Homer St	David & Ruth Housman		0.15	64032 0043	V, wooded	
	53 Waban Ave	Deborah & Gerald Simches		0.11	55011 0013	Residential lot	
	39 Waban Ave	Dinah & Alexander Bodkin		0.1	55011 0011	Residential lot	
	6 Prentice Rd	G & L Karthis		UNKN	73040 0011	Residential lot	
	17 Prentice Rd	James Schaeffer		0.06	73041 0014	Residential lot	
	899-901 Walnut St	Jerome Furman	BU2	0.03	54022 0008	Apartment lot	
	Woodward St	Judith & John Willett	SR2	0.09	53025 0016	Res. lot, garage	
	58 Grafton St	Kuen Shii Tsay		0.05	64040 0007	Residential lot	
	397 Woodward St	Lawrence & Elizabeth Epstein		0.03	53025 0015A	Residential lot	
1672 Beacon St	Lisa K. Desai	SR2	0.002	55011 0009	Residential lot		
4 Carthay Circle	Lisa M. Calderone	MR1	0.1	54023 0007	Residential lot		

Table 10. Cochituate Aqueduct (Newton PRC and Privately Owned Lands)							
Map Code	Parcel Name/Location	Ownership	Zone	Size (Acres)	SBL ID	Current Use	Level of Protect.
A1	24 Grant Ave	Lorna Lamont Trust	SR2	0.1	73041 0006	Residential lot	N
	44 Grafton St	M. Huberman & S. Fidel		0.09	64040 0001	Residential lot	
	Woodward St	M. N. DiBona Tr.		0.36	53025 0015C	V, wooded, lawn	
	29 Prentice Rd	Marc & Karen Kramer		0.06	73041 0016	Residential lot	
	63 Lorna Rd	Marjorie R. Gladstone Trust		0.02	73018 0001	Residential lot	
	6 Carthay Circle	Martin Chippa	PUB	0.27	54023 007A	Residential lot	
	100 Wyman St	MBTA	BU1	0.1	53027 0001	Waban T Station	
	23 Prentice Rd	Michael & Helen Varsamis	SR2	0.06	73041 0015	Residential lot	
	100 Homer St	Nicholas Haining		0.03	64032 0039	V, wooded	
	29 Waban Ave	Patricia F. Malkazian		0.12	55011 0010	Residential lot	
	36 Grant Ave	Paul & Melissa Lerou		0.04	73041 0005	Residential lot	
	15 Bracebridge Rd	Richard & Andree Wilson		0.45	64016 0014A	Res. lot, wooded, garden	
	170 Pine Ridge Rd	Robert & Simone Spain		0.09	53025 0004	Residential lot	
	35 Prentice Rd	Roberta & Ronald Loberfeld		0.02	73041 0017	Residential lot	
	28 Manitoba Rd	Samuel M. Moskowitz		0.12	55011 0001	Residential lot	
	244 Ward St	Sean F. Rynne		0.01	73041 0013	Residential lot	
	658 Comm. Ave	Sharon B. Milinsky		0.01	64041 0001	Residential lot	
	45 Waban Ave	Sidney & Rita Governar		0.11	55011 0012	Residential lot	
	20 Grant Ave	Stanley & Marilyn Salter Trust		0.02	73041 0007	Residential lot	
	28 Collins Rd	Thomas Sabin		0.11	55048 0035	Residential lot	
	14 Collins Rd	Union Church Society		0.11	55048 0036	Church	
	37 Grant Ave	William Beizer		0.05	73042 0017	Residential lot	
	677 Chestnut St	Wm. and Karen Ruth	0.18	53025 0013	Residential lot		
				Public	37.70		
				Private	3.51		

Sudbury Aqueduct – MWRA and Private Lands (Table 11)

The Sudbury Aqueduct is mainly owned by the MWRA (Massachusetts Water Resources Authority) but, like the Cochituate Aqueduct, has some privately-owned parcels.

Managing Agency: Currently the MWRA owned lands are managed by MWRA and privately-owned parcels are maintained by landowners.

Public Access: None of the Sudbury Aqueduct is legally open for public use, though many use the MWRA owned sections for passive recreation.

Expanded Recreational Potential: The MWRA has a relatively recent policy encouraging municipalities to apply for licenses on MWRA aqueduct lands for compatible passive public uses such as walking, biking, and cross-country skiing, as a way to reduce MWRA’s maintenance obligations. Most eligible communities have embraced that opportunity. Securing such a license for the Sudbury Aqueduct would bring expanded recreational benefits to Newton as a link with other open spaces and trails.

Key to Abbreviations: Table 11	
Abbreviation	Meaning
L	Limited, or Temporary Protection
N	Not Protected
SBL ID	Assessor’s Database ID

Table 11. Sudbury Aqueduct (MWRA and Privately Owned Lands)							
Map Code	Parcel Name/Location	Ownership	Zone	Size (Acres)	SBL_ID	Current Use	Level of Protect.
W1	Echo Bridge (4 Ellis St)	MWRA	PUB	0.39	51001 0002	Historic bridge	L
	41 Ellis St			0.39	51001 0002	Wooded slope to Charles River	
	971 Chestnut St			0.27	51002 0008	Lawn	
	1260 Boylston St			0.88	51003 0011	Wooded, embankment, path	
	252 Plymouth Rd			0.02	52001 0030	Trees, embankment, path	
	252 Plymouth Rd			1.86	52001 0030	Trees, embankment, path	
	11 Bowdoin St			1.00	52002 0007	Trees, lawn, path	
	2 Bowdoin St			0.49	52004 0005	Trees, path	
	40 Terrace Ave			1.35	52010 0001	Embankment, path	
	39 Duncklee Rd			2.01	52013 0001	Wooded, path	
	17 Kingman Rd			0.64	52014 0006	Trees, open area	
	259 Plymouth Rd			0.02	54034 0007	Lawn	
	154 Dickerman Rd			0.26	54038 0001	Trees, open area, adj. to MBTA tracks	
	154 Dickerman Rd			0.73	54038 0009	Grassy embankment, path	
	120 Woodward St			0.77	54039 0008	Grassy embankment, path	
	1241 Boylston St			2.05	54049 0001	Trees, embankment, path	
1241 Boylston St	1.07	54049 0001	Trees, embankment, path				

Table 11. Sudbury Aqueduct (MWRA and Privately Owned Lands)

Map Code	Parcel Name/Location	Ownership	Zone	Size (Acres)	SBL_ID	Current Use	Level of Protect.	
W1	0 Centre St	MWRA	PUB	0.84	61032 0001	Grassy slope	L	
	Walnut St - Beacon St			1.01	62004 0007	Grassy embankment, path		
	Beacon St - Greenlawn Ave			0.26	64014 0013	Wooded, path		
	0 Bracebridge Rd	Gregory & Ila Fiete		0.73	64016 0015	Wooded, CR#29	P	
	0 Hancock Ave	City of Newton		0.5	64016 0024	Wooded, northern perimeter of Wilson Conservation Area	L	
	0 Tyler Terr. (south)	MWRA		0.25	64030 0028	Wooded	L	
	0 Tyler Terr. (north)	MWRA		0.15	64032 0002	Wooded	L	
	149 Pleasant St	City of Newton		0.26	64032 0005	School; wooded slope	L	
	639 Beacon St	Wilson Lim		SR1	0.27	61023 0005	Residential lots	N
	655 Beacon St	Susan Davidson	0.13		61024 0001			
	659 Beacon St	Shahin Naghi	0.1		61024 0002			
	665 Beacon St	Mary Kearns	0.11		61024 0003			
	671 Beacon St	William Yee	0.12		61024 0004			
	238 Grant Ave	Jerry Samet	0.04		61024 0005			
	10 Graycliff Rd	Lillia Gordon	0.04		61024 0012			
	251 Grant Ave	Jonathan Lieff	0.11		61025 0001			
	693 Beacon St	David & Jennifer Mack	0.06		61025 0002			
	241 Grant Ave	Martin Flusberg	0.15	610250005A				
	35 Bracebridge Rd	Andrea Roman	0.05	64016 0016				
	33 Hancock Ave	John & Kim Foehl	0.1	64016 0018				
	47 Hancock Ave	John Mason/Barbara Boeger	0.16	64016 0019				
	59 Hancock Ave	Isadore & Sheila Singer	SR2	0.09	64016 0020			
	65 Hancock Ave	Gregor Rhoda		0.09	64016 0021			
	71 Hancock Ave	Peter F. Demuth		0.59	64016 0022			
	38 Bracebridge Rd	Andrei Shleifer		0.03	64026 0004			
	22 Bracebridge Rd	Randolph & Jing Watnick		0.04	64026 0005			
	140 Pleasant St	Juliet Godson		0.14	64026 0008			
	132 Pleasant St	Michael & Barbara Jellinek		0.02	64026 0009			
			Public	18.21				
			Private	2.44				

Massachusetts Department of Conservation and Recreation Controlled Land (Table 12)

Massachusetts Department of Conservation and Recreation (DCR) land, including Hammond Pond Reservation and significant riparian segments along the Charles River, comprises roughly 338 acres or 13.5% of public open space in Newton. DCR land is a combination of parks, parkways, open water, and golf courses maintained by DCR, and is predominantly used for recreation activities. Some land presented on this table is assumed to be owned by DCR but ownership information is currently not available.

Managing Agency: All DCR controlled lands are managed by DCR.

Public Access: All DCR controlled lands in Newton are open to the public for passive and active recreation.

Expanded Recreational Potential: The City does not presume to propose enhancement projects for property it does not own or manage.

Key to Abbreviations: Table 12	
Abbreviation	Meaning
Art 97	Protected under Article 97
CRF	Charles River Frontage
N	Not Protected
PF	Playing Field
SBL ID	Assessor’s Database ID
UNKN	Unknown
V	Vacant (primarily vacant)
WJ	Wetlands Jurisdiction (MA Wetlands Protection Act 310 CMR 10.00 or Newton Floodplain/Watershed Protection Ordinance Sec. 22-22)
WR	Wetlands Restriction (G.L. Ch. 131, Sec. 40A)

Table 12. Massachusetts Department of Conservation and Recreation Controlled Land							
Map code	Name/Location	Owner Notes	Zone	Size (Acres)	SBL_ID	Current Use	Level of Protect.
D1	Charles River Res. – 1 Nonantum Rd	DCR	PUB	1.35	71013 0001	Skating rink, yacht club, PF, DCR path; CRF, WJ	Art 97
D2	Charles River Res. – Watertown - Riverdale Ave			0.64	11001 0005	DCR path; wooded; CRF, WJ	
	Charles River Res. – Riverdale Ave - Rustic St			1.98	11004 0029	DCR path; wooded; CRF, WJ	
	Charles River Res. – Rustic St - 367 California St			2.73	11005 0015	DCR path; wooded; CRF, WJ	
D3	Charles River Res. – 439 California St - Cheesecake Brook			5.4	21002 0003	DCR path; wooded; CRF, WJ	
	Charles River frontage – Albemarle Rd	UNKN	UNKN	0.3	99099 0005	V; wooded; CRF, WJ	UNKN
D4	Charles River Res. – 56 Farwell St – Waltham	DCR	PUB	0.42	21001 0019	V; scrub; CRF, WJ	Art 97
D5	Charles River Res. – Forest Grove Rd			2.61	41031 0039	V; wooded, CRF, WJ, WR#1; adj. to City open space	
D6	Charles River Res. Peninsula (280R Islington Rd)			2	41027 0048	V; wooded, 2 peninsulas, CRF, WJ	

Table 12. Massachusetts Department of Conservation and Recreation Controlled Land										
Map code	Name/Location	Owner Notes	Zone	Size (Acres)	SBL_ID	Current Use	Level of Protect.			
D7	Charles River Res. – 2345R Commonwealth Av	DCR	PUB	0.25	41023 0018A	V; some trees; CRF, WJ; adj. to City open space	Art 97			
D8	Charles River Res. – 2401 Commonwealth Ave			1.05	41023 0020	Canoe rental facility; partially wooded; CRF, WJ				
D9	Charles River Res. – 2500 Commonwealth Ave			2.29	41001 0003	V; steep, wooded; CRF, WJ				
D9/D10	Charles River Res. – 2450 Commonwealth Ave			0.36	41001 0004	V; steep, wooded				
D10	Charles River Res. – Commonwealth Ave			0.46	41001 0005	V; steep, wooded				
D11	Charles River Res. – adj. to I-90 and ramp			0.33	41001 0002B	V; wooded; CRF, WJ				
	Charles River frontage – adj. to I-90 and ramp	UNKN	UNKN	0.11	99099 0075	V; wooded; CRF, WJ	UNKN			
	Charles River frontage – adj. to I-90 and ramp	UNKN	UNKN	0.01	99099 0045	V; wooded; CRF, WJ	UNKN			
D12	Charles River Res. – 0 Evergreen Ave	DCR	PUB	0.15	41001 0002A	V; wooded slope; CRF, WJ	Art 97			
D12	Charles River Res. – 21 Riverside Rd			0.28	41001 0002	V; wooded slope; CRF, WJ				
D13	Charles River Res. – 1 Riverside Rd			0.19	41005 0001	V; wooded, lawn, walk; CRF, WJ				
	Charles River Res. – 107 Charles St			1.07	41005 0002	Charles River Res. HQ; lawn, trees; CRF, WJ				
	Charles River Res. – 139 Charles St			0.8	41005 0003	V; lawn, partially wooded; CRF, WJ				
D14	Charles River Res. – 355 Grove St			1.17	42011 0001A	V; wooded slope (RR embankment); CRF, WJ				
	Charles River Res. – 355 Grove St			2.65	42011 0001	V; wooded slope, Pony Truss Bridge; CRF, WJ				
	Charles River Res. – 359 Grove St			4.19	42011 0002	V; wooded slope, Pony Truss Trail; CRF, WJ				
--	Charles River frontage – adj. to ramp			UNKN	UNKN	1.78		99099 0046	V; wooded, old RR bridge; CRF, WJ	UNKN
--	Charles River frontage – between I-95 and ramp			UNKN	UNKN	6.37		99099 0049	V; wooded, rocky outcroppings; CRF, WJ	UNKN
--	Charles River frontage – adj. to I-95	UNKN	UNKN	3.05	99099 0050	V; wooded, gas main alignment; CRF, WJ	UNKN			
D15	Charles River Res. – 81 Pine Grove Ave	DCR	PUB	4.38	42026 0004	Leo J Martin golf course; turf, partially wooded; CRF, WJ	Art 97			
D16	Charles River Res. – 199 Pine Grove Ave			18.08	42026 0003	Leo J Martin golf course; turf, partially wooded; CRF, WJ				

Table 12. Massachusetts Department of Conservation and Recreation Controlled Land							
Map code	Name/Location	Owner Notes	Zone	Size (Acres)	SBL_ID	Current Use	Level of Protect.
D17	Charles River Res. – 41 Concord St	DCR	PUB	31	42027 0001	Leo J Martin golf course; turf, wooded; CRF, WJ	Art 97
	Charles River Res. – 51 Concord St			2.33	42027 0008	V; wooded; CRF, WJ	
D18	Charles River Res. – 2357 Washington St			1.35	42028 0008	V; wooded slope; CRF, WJ	
	Charles River Res. – 2359 Washington St			0.15	42028 0009	V; wooded slope; CRF, WJ	
D19	Charles River frontage	UNKN	UNKN	0.13	99099 0064	V; wooded; CRF, WJ	UNKN
	Charles River frontage	UNKN	UNKN	0.08	99099 0049	V, wooded slope; adj. to wine store & parking	UNKN
	Charles River Res. – 2362R Washington St	DCR	BU1	0.06	42031 0024	V; wooded slope; CRF, WJ	Art 97
D20	Charles River frontage	UNKN	UNKN	0.06	99099 0063	V; wooded; CRF, WJ	UNK
	Washington St - Charles River edge	UNKN	UNKN	0.02	99099 0039	Access strip to river edge; partly paved; CRF, WJ	UNK
	Charles River Res. – 2260 Washington St	DCR	PUB	0.02	42031 0005	Paved walkway to bridge; some trees; CRF, WJ	
D21	Charles River Res. – 2242 Washington St	DCR	MAN	0.07	42031 0003	V; wooded; CRF, WJ	
	Charles River Res. – 2232 Washington St		MAN	0.03	42031 0002	V; wooded; CRF, WJ	
	Charles River Res. – 2222 Washington St		PUB	0.31	42031 0001	V; wooded; CRF, WJ	
D22	I-95 ramp median – 2-26 Quinobequin Rd	DCR	BU1	1.88	42001 0002; 0003	V; grass, some trees	Art 97
	Between I-95 and Quinobequin Rd		PUB	0.38	42001 0005 -- 0008	V; grass, partially wooded	
	Charles River Res. – 1 Quinobequin Rd			2.61	42001 0001	V; wooded, foot bridge to Wellesley; CRF, WJ	
	Charles River Res. – 119 Quinobequin Rd			0.36	42002 0017	V; grass	
	Charles River Res. – 137 Quinobequin Rd			0.59	55043 0006	V; grass, partially wooded; CRF, WJ	
	Charles River Res. – 233 Quinobequin Rd		3.29	55043 0005	V; wooded; CRF, WJ		
	Charles River Res. – 321 Quinobequin Rd		SR2	1.65	55043 0004	V; wooded; CRF, WJ	
	Charles River Res. – 420 Quinobequin Rd		0.03	55039 0018	V, wooded side lot		

Table 12. Massachusetts Department of Conservation and Recreation Controlled Land										
Map code	Name/Location	Owner Notes	Zone	Size (Acres)	SBL_ID	Current Use	Level of Protect.			
D22	Charles River Res. – 441 Quinobequin Rd	DCR	PUB	4.32	55043 0003	V; wooded; CRF, WJ	Art 97			
	Charles River Res. – 555 Quinobequin Rd			1.52	55043 0002	V; wooded; CRF, WJ				
	Charles River Res. – 611 Quinobequin Rd			0.82	55043 0001	V; wooded; CRF, WJ				
	Charles River Res. – Quinobequin Rd			4.18	55055 0001	V; wooded, Dresser Brook; CRF, WJ				
	Charles River Res. – Boylston St			0.64	55055 0002	V; wooded, inaccessible; CRF, WJ				
	Charles River Res. – Boylston St			0.3	55055 0003	V; wooded, inaccessible; CRF, WJ				
D23	Charles River Res. – 1 Ellis St					2.37		51001 0001	CRF, V, wooded, adj. to Echo Bridge, WJ	
D24	Charles River Res. – 51 Ellis St					1		51001 0003	V; wooded, adj. to Echo Bridge and Hemlock Gorge; CRF, WJ	
D25	Charles River Res. – 391 Elliot St					0.6		51001 0012	Sewer Pump Station; some trees, lawn; CRF, WJ	
D26	Charles River Res. – Nahanton St - 125R Wells Ave					59.94		84034 0001	V; wooded, wet, NVS, knolls, Country Club Brook, College Brook; CRF, WJ	
	Charles River Res. – 125R Wells Ave - Boston					35.07		84034 0040	V; wooded, wet, NVS, knolls; CRF, WJ	
D28	Hammond Pond Res. East					22.42		99099 0098	Hammond Pd, a Great Pond per MGL	
	Hammond Pond Res. East					26.43		63037 0028; 0029	V; wooded, wet, ledges, boat access ramp area, adj. to Hammond Pond; WJ, WR#5	
D29	Hammond Pond Res. West			38.43	65008 0004	V; wooded, wet, Cat Pond, drive and parking for Chestnut Hill Mall; WJ, WR#6				
WB2	Hammond Pond			22.42	99099 9021	Great Pond	P			
D30	Charles River frontage	UNKN	UNKN	0.4	99099 0041	V; wooded, old railroad bridgehead and rail bed; CRF, WJ	UNKN			
D30A	Concord St – Pine Grove Ave	UNKN	UNKN	1.54	99099 0042	V; wooded, old rail bed segment				

Table 12. Massachusetts Department of Conservation and Recreation Controlled Land							
Map code	Name/Location	Owner Notes	Zone	Size (Acres)	SBL_ID	Current Use	Level of Protect.
D30B	Rear – Clearwater Rd	UNKN	UNKN	2.51	99099 0044	V; wooded, path, old rail bed, adj. to golf course	UNKN
	Charles River frontage	UNKN	UNKN	1.0	99099 0014	Leo J Martin golf course; turf, old rail bed; CRF, WJ	
				Total	338.76		

Other Municipal, State, and Federal Lands with Mixed Levels of Protection (Table 13)

This section includes land under ownership of the following agencies: Massachusetts Turnpike Authority (MTA), Massachusetts Bay Transit Authority (MBTA), and United States Army Corps of Engineers (USACE).

Managing Agency: All parcels in this table are managed by their owners, but the Newton Conservation Commission does maintain the trails on USACE land where they connect to the Helen Heyn Conservation Area from Nahanton Street.

Public Access: Open space resources on School Department controlled land are open to the public.

Expanded Recreational Potential: Most of these parcels are at the limit in terms of opportunities for expanded recreational opportunities, but ADA level access from school buildings to recreational facilities can be improved.

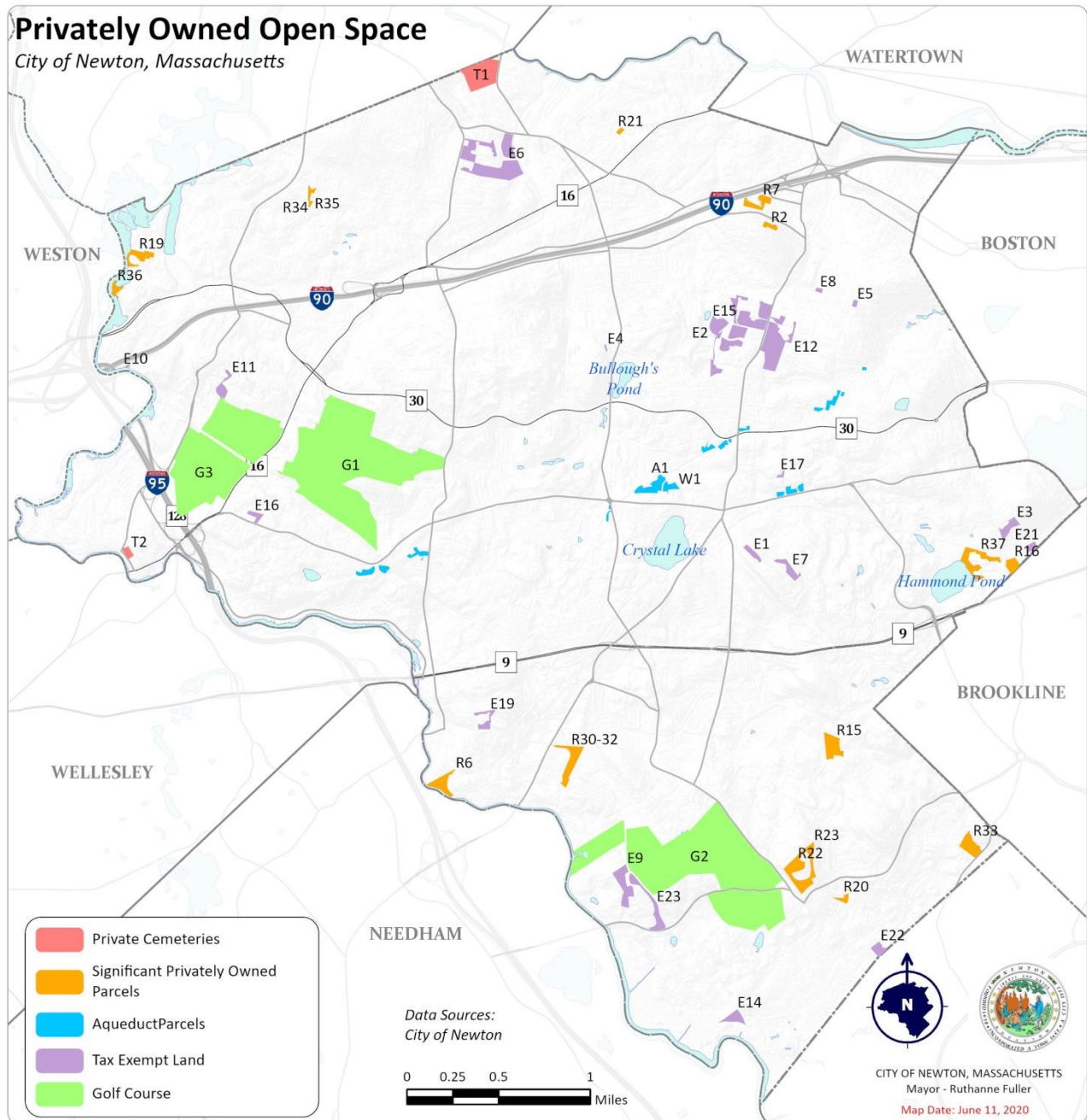
Key to Abbreviations: Table 13	
Abbreviation	Meaning
Art 97	Protected under Article 97
CR	Conservation Restriction (M.G.L. Ch. 184, Sec. 31-33)
CRF	Charles River Frontage
N	Not Protected
NVS	Natural Valley Storage Area "B"
P	Protected in Perpetuity
SBL ID	Assessor's Database ID
UNKN	Unknown
V	Vacant (primarily vacant)
WJ	Wetlands Jurisdiction (MA Wetlands Protection Act 310 CMR 10.00 or Newton Floodplain/Watershed Protection Ordinance Sec. 22-22)

Table 13. Other Municipal, State, and Federal Land								
Map Code	Name	Owner	Zone	Size (Acres)	SBL	Current Use	Level of Protect.	Open to Public
D13	Charles River frontage – 149 Charles St	MTA	PUB	0.38	41005 0004	V; wooded, railroad embankment; CRF, WJ	N	No
D27	Charles River Reservation – 117 Wells Ave	USACE	LMD	7.42	84034 0002P	V; wooded, wet, NVS, College Brook; WJ	Art 97	Yes
N/A	Christina St Rail Bridge	MBTA	UNKN	UNKN	UNKN	Old rail bridge over Charles River connecting Christina St in Newton to the Blue Heron trails in Needham	N	No
N/A	Upper Falls Greenway Rail Bridge	MBTA	UNKN	UNKN	UNKN	Old rail bridge over Charles River connecting the Upper Falls Greenway Rail Trail to the cont'd rail ROW in Needham	N	No
				Total	7.80			

Privately Owned Land

Private open space in Newton comprises roughly 38% or 903 acres of all open space in the City. Private open space parcels in the City include three large golf courses, cemeteries, tax-exempt institutional holdings, and many individual parcels with significant areas of open space. Open space that is controlled by private owners and is not protected or has limited protection could be sold or developed into non-open space use. See **Figure 41**.

Figure 41: Privately Owned Open Space (Lands of Conservation or Recreation Interest)
(Codes refer to codes in Section 5 tables)



Private Golf Courses (Table 14)

Private open space makes up 38% of Newton’s open space and of that, three golf courses comprise roughly 56% (542.69 acres) and represent the largest single use category of all open space in the City (golf courses account for 23% of Newton’s total open space).

Managing Agency: The courses are currently maintained by the private management companies running the country clubs associated with them.

Public Access: All three private golf clubs are open only to club members.

Expanded Recreational Potential: These resources have limited opportunities for increased recreational potential, but improved connectivity through and around the golf courses for the public can be explored.

Key to Abbreviations: Table 14	
Abbreviation	Meaning
Ch 61	Registered under MGL Chapter 61
CRF	Charles River Frontage
GC	Golf Course
L	Limited, or Temporary Protection
SBL ID	Assessor’s Database ID
WJ	Wetlands Jurisdiction (MA Wetlands Protection Act 310 CMR 10.00 or Newton Floodplain/Watershed Protection Ordinance Sec. 22-22)
WR	Wetlands Restriction (G.L. Ch. 131, Sec. 40A)

Table 14. Privately Owned Golf Courses						
Map Code	Name	Zone	Size (Acres)	SBL	Current Use	Level of Protect.
G1	Brae Burn Country Club, 326 Fuller St	SR1	190.3	43045 0027; 53029 0001; 53040 0012, 0013	GC, rolling, Moffat Hill, drumlin, Cheesecake Brook, pond, WJ	Ch 61B
G2	Charles River Country Club, 483 Dedham St	SR1, SR3	219.3	84034 0004; 83035 0001; 83036 0004	GC, rolling, Winchester Hill, ponds, part wooded, Lacy Brook & Country Club Brook, rock outcrops, WJ, CRF; WR#10, WR#15	Ch 61B
G3	Woodland Golf Club, 1897 Washington St	SR1, SR2	133.1	42009 0001, 0002; 42009 0004; 42009 0007, 0008; 43046 0011, 0012; 43046 0039	GC, Rolling, esker, Runaway Brook, WJ	Ch 61B
Total			542.69			

* Note: Information on Newton Commonwealth Golf Course is in Table 3, Parks, Recreation, & Culture. Information on Leo J. Martin Golf Course is in Table 9, Department of Conservation and Recreation.

Private Cemeteries (Table 15)

Cemeteries in Newton comprise roughly 118 acres of private open space and include the Newton Cemetery and Arboretum, Calvary Cemetery, and St. Mary’s Cemetery. Though private cemeteries only make up about 5% of Newton’s open space, they are frequented for passive recreational activities such as walking, bird watching, and visiting historically significant monuments.

Managing Agency: All of these cemeteries are managed by private corporations.

Public Access: All three private are open to the public for passive recreation.

Expanded Recreational Potential: There is no expanded recreational potential for these parcels under their current use.

Key to Abbreviations: Table 15	
Abbreviation	Meaning
Ch 61	Registered under MGL Chapter 61
CRF	Charles River Frontage
GC	Golf Course
L	Limited, or Temporary Protection
SBL ID	Assessor’s Database ID
WJ	Wetlands Jurisdiction (MA Wetlands Protection Act 310 CMR 10.00 or Newton Floodplain/Watershed Protection Ordinance Sec. 22-22)
WR	Wetlands Restriction (G.L. Ch. 131, Sec. 40A)

Table 15. Private Cemeteries						
Map Code	Name	Zone	Size (Acres)	SBL	Current Use	Level of Protection
T1	Calvary Cemetery (North St)	PUB	15.73	34002 0014	Cranberry Brook; WJ; WR#13	L
T2	St Mary's Cemetery (Concord St)	ORD	1.43	42030 0010	--	L
T4	Newton Cemetery and Arboretum (Walnut St)	PUB	101.46	64003 0006, 0007; 64003 0009	Arboretum, Civil War Memorial, ponds, Cold Spring brook; WJ	L
			Total	118.62		

* Note: Information on Newton’s historic burial grounds are in Table 3, Parks, Recreation, & Culture.

Tax-Exempt Land with Significant Open Space (Table 16)

Tax-exempt land comprises roughly 205 acres of private open space and includes places that are typically owned by religious organizations, schools, non-profits, and other institutions. These lands may be used intensively or may contain significant natural areas. Most of the privately owned tax-exempt land is not protected, but a few parcels, such as Lasell Pond and the Hebrew School, are protected with Conservation Restrictions. Parcels with “significant open space” are defined here as parcels of over ½ acre with some open space of potential ecological or recreational value, except two cases of smaller parcels. Parcels are listed in order of total acreage.

Public Access: The majority parcels listed in Table 16 are not open to the public, except the parcels owned by the Newton Conservators (E4, E8, E17) which are open to the public. General public are not allowed to use the facilities on these parcels, but some parcel owners lease field and court space to local sports leagues. .

Expanded Recreational Potential: There is little to no expanded recreational potential for these parcels.

Key to Abbreviations: Table 16	
Abbreviation	Meaning
CR	Conservation Restriction (M.G.L. Ch. 184, Sec. 31-33)
CRF	Charles River Frontage
HPR	Historic Preservation Restriction
L	Limited, or Temporary Protection
N	Not Protected
P	Protected in Perpetuity
PF	Playing Field
SBL ID	Assessor’s Database ID
TC	Tennis Court
V	Vacant (primarily vacant)
WJ	Wetlands Jurisdiction (MA Wetlands Protection Act 310 CMR 10.00 or Newton Floodplain/Watershed Protection Ordinance Sec. 22-22)

Table 16. Tax-Exempt Land with Significant Open Space								
Map Code	Name	Main Address	Owner/Managed By	Zone	Size (Acres)	SBL_ID	Current Use	Level of Protect.
E6	Fessenden School	250 Waltham St	Fessenden School	SR3	38.32	31028 0010 -- 0013; 31028 0077, 0079, 0079A, 0079B	School; playing fields, tennis courts	N
E1	Andover-Newton Theological	210 Herrick Rd	Winthrop Park School, Inc.	SR3	18.94	65019 0045	School; wooded slope, lawn; scenic easement to Blue Hills; HPR	N
E9	Jewish Community Center	333 Nahanton St	JCC of Greater Boston, Inc.	SR1	28.13	83035 0004	Community Center; wooded slopes; CR#6 & CR#9	L/P
E16	Newton-Wellesley Hospital	1973 Beacon St	Newton-Wellesley Hospital	SR2	26.57	55001 0015, 0015A, 0015B; 55001 0028; 55001 0032 - 0034	Hospital; wooded	N
E12	Mt. Alvernia High School	790 Centre St	Miss Franciscan Sisters of the Immaculate Conception	SR2	22.81	73001 0016, 0016A; 0016D, 0016E, 0017	School; PFs, lawn, wooded, Edmands Brook; WJ	N
E15	Newton Country Day School	785 Centre St	Boston Academy of Sacred Heart, Inc.	SR2 PUB	18.57	13018 0001 - 0005	School; PFs, wooded; WJ	N
E13	UMass Amherst at Mt. Ida	777 Dedham St	University of MA Building Authority	SR1	14.71	84034 0006	College entry parcel; wooded, pond; WJ	N
E7	Hebrew College	0 Langley Rd	Winthrop Park School, Inc.	SR3	6.73	65019 0045A	College; wooded slope; CR#11, B.O. 67-98(3)	P
E18	Jackson Walnut Park School	55 Walnut Park	Congregation Sisters of St Joseph	MR1	6.41	12003 0004	School; lawn	N
E19	Stone Rehabilitation and Senior Living	277 Elliot St	Stone Institute & Newton Home for the Aged People	MR1	5.1	51016 0010	Rehab/senior living facility; wooded, front lawn; HPR	N
E2	Boston College Law School	0 Colby St	Trustees of Boston College	SR2	4.21	13020 0052	PF, stadium; woods, near Edmands Brook; WJ	N
E21/E22	Brimmer & May School	69 Middlesex Rd	Brimmer and May School	SR1	3.63	82039 0001; 63033 0021	School; PFs	N
E3	Chestnut Hill School	142 Essex Rd	Chestnut Hill School Inc.	SR1	3.33	63031 0010	School; open field, specimen trees	N

Table 16. Tax-Exempt Land with Significant Open Space								
Map Code	Name	Main Address	Owner/Managed By	Zone	Size (Acres)	SBL_ID	Current Use	Level of Protect.
E14	Nahanton Street, Rear	1 Nahanton St	Oak Hill Park Association, Inc.	SR1	3.1	84034 0002F	V; wooded; WJ, rare species habitat	N
E11	Lasell Pond	0 Seminary Ave	Lasell College	SR1	1.72	43046 0038	College; pond, wooded; WJ	P
E23	Coleman House	677 Winchester St	JCHE Coleman LP	SR1	0.85	83035 0004B	Senior living facility; TC; wooded	N
E5	Durant Homestead	282 Waverly Ave	Durant Homestead Foundation	SR1	0.57	73009 0001	V; trees, lawn; HPR	P
E8	Hyde Brook - Awtrey Dell	289R Park St	Newton Conservators, Inc.	SR2	0.55	72023 0042A	V; wooded; deed restriction	P
E17	Ordway Park	0 Gibbs St	Newton Conservators, Inc.	SR2	0.52	61029 0016A	V; wooded, terraced garden with shrubs; deed restriction	P
E4	Dexter Woods	25 Dexter Rd	Newton Conservators, Inc.	SR2	0.23	24030 0014A	V; steep, wooded; deed restriction	P
E10	Lasell Boat House	11 Riverside Rd	Lasell College	SR3	0.14	41001 0001	Boathouse, docks; CRF, WJ	N
					Total	205.12		

Private Properties with Significant Open Space (Table 17)

While some of the City’s private parcels with significant amounts of unprotected open space are protected in part by Conservation Restrictions, private unprotected properties are at risk of being developed into non-open space uses. Development potential is dependent on location and existing site conditions (e.g., the presence of wetlands, bedrock and ledge, steep slopes, etc.). “Parcels with significant open space” are defined here as parcels of over ½ acre with some open space of potential ecological or recreational value, except one case where a smaller parcel is contiguous with a large vacant City parcel. Parcels are listed in order of total acreage.

Public Access: The majority parcels listed in Table 17 are not open to the public, except the Boston Marriott Newton (R36) which is open to the public and connects to DCR and Newton Conservation Commission controlled lands.

Key to Abbreviations: Table 17	
Abbreviation	Meaning
CR	Conservation Restriction (M.G.L. Ch. 184, Sec. 31-33)
CRF	Charles River Frontage
HPR	Historic Preservation Restriction
L	Limited, or Temporary Protection or Public Use
N	Not Protected or No Public Use
P	Protected in Perpetuity
SBL ID	Assessor’s Database ID
V	Vacant (primarily vacant)
UD	Under Development
WJ	Wetlands Jurisdiction (MA Wetlands Protection Act 310 CMR 10.00 or Newton Floodplain/Watershed Protection Ordinance Sec. 22-22)
WR	Wetlands Restriction

Table 17. Private, Unprotected Land with Significant Open Space									
Map Code	Parcel Name/Location	Ownership	Zone	Size (Acres)	SBL_ID	Current Use	Public Use	Level of Protect.	Potential Public Value
R33	Hancock Estates	Kessler Woods LLC	MR3	21.98	82037 0094; 95	Multi-family housing, parking; wet, wooded, Saw Mill Br.; WJ; WR#7, CR #33; Public Access Easement to Kessler Woods Conservation Area	L	L	Continuous with other protected lands; passive recreation potential; moderate ecological value
R36	Boston Marriott Newton	CHSP Newton LLC	BU5	11.55	42023 0018	Hotel, parking; open lawn, part wooded; CRF; WJ	N	N	Continuous with other protected lands; limited recreation potential; moderate ecological value (CRF)
R22	Peabody School Condominium	Condominium	SR1	7.93	82015B 0001	Multi-family housing, parking, TC; part wooded	N	N	Moderate recreation potential (TC); low ecological value
R31	Winchester Swamp	Northland 149 Charlemont LLC	SR3	5.15	83028 0086	South Meadow Br.; wooded, wet; WJ	N	N	Continuous with other protected land; moderate recreation potential (P65); moderate ecological value (SMB)
R32		54 Jaconnet Condominium	MU1	1.50	83028 0085	South Meadow Br.; wooded, wet; WJ	N	N	
R30		188 Needham St. Lim. Partn.	MU1	0.97	83028 0081	South Meadow Br.; part wooded, wet; WJ	N	N	
R6	1165 Chestnut St	Sconnix Realty Trust	MR1	6.52	51045 0005	Radio-TV transmission tower, & ground facility; open field, wooded; CRF; CE#1	L	N	Continuous with other protected land; high recreation potential (P65->P42); moderate ecological value (CRF)
R15	Greenwood Street Lots	Moskow Michael B Tr	SR1	6.49	81051 0017 -0019	UD; wooded, wet; WJ; WR#17	N	N	Moderate recreation potential (S13); high ecological value (WR#17)
R19	122 Islington Rd	Basil K Woods	SR3	5.62	41026 0001	Estate; wooded, wet, pond; WJ; CRF	N	N	Continuous with other protected land; low recreation potential; moderate ecological value (CRF)
R37	Hammond Pond Lots	Rosemary LLC Elderberry LLC	SR1	4.35	63037 0002; 63037 0012-0017	Residences; Hammond Pond, wooded, wet; WJ	N	N	Continuous with other protected land; low recreation potential; moderate ecological value (Hammond Pond)

Table 17. Private, Unprotected Land with Significant Open Space									
Map Code	Parcel Name/Location	Ownership	Zone	Size (Acres)	SBL_ID	Current Use	Public Use	Level of Protect.	Potential Public Value
R7	West Suburban YMCA	West Suburban Young Men's	MR1	3.85	12017 0001	YMCA, track, PF, parking; part wooded	L	N	High recreation potential (track/PF); low ecological value
R23	Bigelow House Condo	Condominium	MR3	3.76	82015B 0002	Multi-family housing, parking; wooded; HPR	N	N	Low recreation potential; low ecological value
A1	Cochituate Aqueduct land	Private Owners	--	3.51	See Table 7				High recreation potential; moderate ecological value
R16	Longwood Cricket Club	Longwood Cricket Club	SR1	2.76	63036 0001	Club building, parking, PF, TC	L	N	High recreation potential (PF/TC); low ecological value
W1	Sudbury Aqueduct land	Private Owners	--	2.44	See Table 8				High recreation potential; moderate ecological value
R2	Riley Estate	Condominium	SR1	1.34	12021 0038	Multi-family housing; wooded, grass	N	N	Low recreation potential; low ecological value
R20	Laurus Lane Reservation	Laurus Lane Reservation Area Trust	SR1	1.27	82020 0014E	Wooded, wet, King Brook; WJ	N	N	Low recreation potential; moderate ecological value (King Brook)
R21	Silver Lake	S & J Ventures, LLC.	MR1	1.15	14008 0011	Multi-family housing; wooded	N	N	Low recreation potential; low ecological value
R34	Old Pine St Landfill Rear	Apodemi Anita	SR3	1.06	44035 0070	V, parking; meadow in-holding to City land	N	N	High recreation potential; low ecological value
R35		Mayur Abhay & Roma	SR3	0.43	44035 0087	Residential; part meadow in-holding to City land	N	N	
				Total	78.43				

Trails Inventory (Table 18)

Below is an inventory of the City's natural trails or open space pathways that exist within open space parcels. Trails in Newton are being defined as, generally, naturally surfaced, moderately wide, walking/hiking paths in naturalized areas. These trails are generally not accessible. Pathways in Newton are being defined here as, generally, hard surfaced, wide, multi-use paths. Many pathways in Newton are accessible. See **Appendix B** for information on accessibility. All trails and pathways are under jurisdiction of Parks and Recreation, DCR, and the Conservation Commission. Please note that painted bike lanes along roads are not included in this inventory.

Key to Abbreviations: Table 18	
Abbreviation	Meaning
Con Comm	Newton Conservation Commission
DCR	Massachusetts Department of Conservation and Recreation
PRC	Newton Parks, Recreation & Culture

Table 18. Trails Inventory				
Parcel Name	Village	Total Length (Miles)	Type	Managed By
Albemarle Playground (Russell J. Halloran Sports and Recreation Complex)	West Newton/Newtonville	0.51	Pathway	PRC
Auburndale Park/Lyons Park	Auburndale	1.56	Trail	PRC
Thompsonville Playground/Bowen School	Thompsonville	0.15	Pathway	PRC
Boyd Park	Nonantum	0.15	Pathway	PRC
Bulloughs Pond Park	Newtonville	0.02	Pathway	PRC
Burr Park	Newton Corner	0.12	Pathway	PRC
Cabot Park	Newtonville	0.51	Pathway	PRC
Captain Ryan Park	West Newton	0.07	Pathway	PRC
Chaffin Park	Newton Corner	0.06	Pathway	PRC
Charlesbank Park	Nonantum	0.03	Pathway	PRC
Charles River Pathway Conservation Area	Upper Falls	0.34	Trail	Con Comm
Charles River Reservation	Nonantum/Auburndale	2.65	Trail	PRC/Con Comm/DCR
Cheesecake Brook Greenway	Auburndale	0.01	Footbridge	PRC/DPW
Claflin Playground	Newtonville	0.12	Pathway	PRC
Cochituate Aqueduct	Waban/Newton Highlands/Newton Centre	2.55	Trail	Con Comm/PRC
Cohen Conservation Area	Chestnut Hill	0.30	Trail	Con Comm
Cold Spring Park	Newton Centre/Newton Highlands	1.93	Trail/Pathway	PRC
Colletti-Magni Park	Nonantum	0.12	Pathway	PRC
Crystal Lake: Cronin's Cove	Newton Centre	0.07	Pathway	PRC
Crystal Lake: Levingston Cove	Newton Centre	0.18	Pathway	PRC
Davis Playground (Tom Torchia Playground)	West Newton	0.17	Pathway	PRC

Table 18. Trails Inventory				
Parcel Name	Village	Total Length (Miles)	Type	Managed By
Dexter Rd Parcel	Newtonville	0.07	Trail	PRC
Dolan Pond Conservation Area	West Newton	0.35	Trail	Con Comm
Edmands Park	Newtonville	2.22	Trail	PRC
Emerson Playground	Upper Falls	0.06	Pathway	PRC
Farlow Tot Lot	Newton Corner	0.09	Pathway	PRC
Farlow Park/Underwood School	Newton Corner	0.21	Pathway	PRC
Flowed Meadow Conservation Area	Auburndale	1.46	Trail	Con Comm
Forte Memorial Park	Nonantum	0.21	Trail	PRC
Frank Barney Conservation Area	Upper Falls	0.12	Trail	Con Comm
Hamilton Park (Lower Falls Playground)	Lower Falls	0.04	Pathway	PRC
Heartbreak Hill Park at Waban Hill Reservoir	Chestnut Hill	0.25	Trail	PRC
Helen Heyn Riverway	Oak Hill	2.67	Trail	Con Comm
Hemlock Gorge	Upper Falls	0.29	Trail	DCR
Houghton Garden Conservation Area	Chestnut Hill	0.85	Trail	Con Comm
Hunnewell Woods Conservation Area	Newton Corner	0.15	Trail	Con Comm
Hunnewell Playground	Newton Corner	0.16	Trail	PRC
Kendrick Park	Newton Corner	0.10	Pathway	PRC
Kennard Park and Conservation Area	Newton Centre	1.32	Trail	PRC/Con Comm
Linwood Park	Newtonville	0.04	Pathway	PRC
Lowell Park	Newtonville	0.09	Pathway	PRC
Martin Conservation Area	Upper Falls	0.10	Trail	Con Comm
McGrath Park	West Newton	0.04	Path	PRC
Nahanton Park	Oak Hill	2.59	Trail	PRC
Newton Centre Green	Newton Centre	0.05	Pathway	PRC
Newton Centre Playground	Newton Centre	1.08	Pathway	PRC
Newton Commonwealth Golf Course	Newton Centre	1.40	Pathway	PRC
Newton Highlands Playground	Newton Highlands	1.03	Pathway/Trail	PRC
Norumbega Conservation Area	Auburndale	1.14	Trail	Con Comm
Oakdale Woods Conservation Area	Newton Highlands	0.34	Trail	Con Comm
Officer Bobby Braceland Playground (Upper Falls Playground)	Upper Falls	0.04	Pathway	PRC
Pellegrini Park	Nonantum	0.20	Pathway	PRC
Quinobequin Rd	Waban	1.40	Trail	DCR
Richardson Playground	Waban	0.06	Pathway	PRC
River Street Playground	West Newton	0.02	Pathway	PRC

Table 18. Trails Inventory				
Parcel Name	Village	Total Length (Miles)	Type	Managed By
Riverside Area Trails	Lower Falls	1.00	Trail	Con Comm/PRC
Sawmill Brook Conservation Area	Oak Hill	0.90	Trail	Con Comm
Solomon Schechter Playground	Oak Hill	0.01	Pathway	PRC
Stearns Park	Nonantum	0.22	Pathway	PRC
Upper Falls Greenway	Upper Falls	1.08	Trail	PRC
Waban Playground/Angier School	Waban	0.05	Pathway	PRC
Ward Park	Newton Centre	0.07	Pathway	PRC
Webster Conservation Area and Park	Chestnut Hill	5.60	Trail	Con Comm
Wellington Playground	West Newton	0.16	Pathway	PRC
Wilson Conservation Area and Restriction	Newton Centre	0.08	Trail	Con Comm
	Total	41.02 mi		