

PARKING

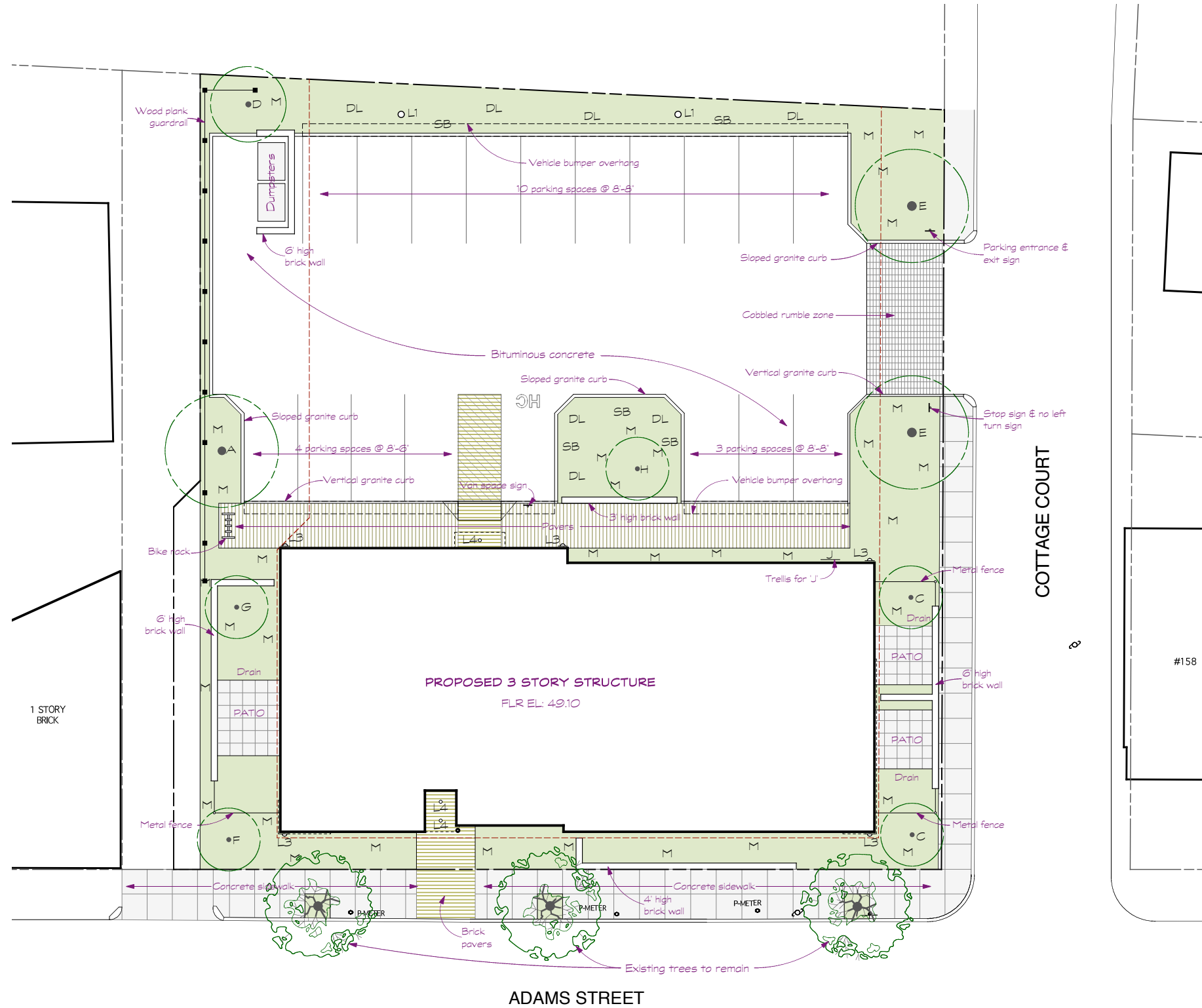
		Required	Provided
Residential	9 units @ 2 / unit =	18 spaces	18 spaces
Handicap space:	15-25 parking spaces	1 space	1 space

LIGHTING LEGEND

- L1 Post Light: Visio Lighting, SETI w/ adjustable parabolic difuser on 9ft pole
- L2 Not used
- △ L3 Wall Sconce: Luraline Helos Series, CFU
- L4 Down Light: Lightolier 6" recess w/ LED lamp

PLANT LIST

KEY	QTY	NAME	NOTES
A	1	GINKGO BILBOA GINKGO BILBOA	4" CALIPER Male specimen
B		Not used	
C	2	QUERCUS ROBUR 'FASTIGIATA' ENGLISH OAK FASTIGIATE	5" CALIPER Narrow growing, low-branched tree that retains its columnar form with maturity. 60' high.
D	1	QUERCUS PALUSTRIS PIN OAK	5" CALIPER Dense, pyramidal with downward-growing lower branches. Glossy, deeply green cut leaves become brilliant scarlet in fall. 75' high.
E	2	ZELKOVA 'GREEN VASE' JAPANESE ZELKOVA	3.5" CALIPER Fast growing, upright with a vase shape similar to American elm. Bronze-red fall foliage. Tolerates city conditions and air pollution. 60' high.
F	1	CERCIS CANADENSIS EASTERN REDBUD— PURPLE	2.5" CALIPER Wide, upright. Rose-pink flowers along branches in early spring. Foliage turns yellow in autumn. 20' high.
G	1	CORNUS FLORIDA FLOWERING DOGWOOD— WHITE	2.5" CALIPER Small white flat-topped fragrant flowers in late May into June. Green foliage, reddish in autumn. 20' high.
H	1	HANANELIS 'ARNOLD PROMISE' WITCHHAZEL	2" CALIPER Vigorous and upright with vase-like branches and stems. Large, lemon-colored flowers with a distinctive lemony fragrance, February—March. Multicolored fall foliage. 20' high.
J	1	SCHIZOPHRAGMA HYDRANGEOIDES JAPANESE HYDRANGEA VINE	#5 STK Vigorous clinging vine with lacecap-type white flowers and heart-shaped green leaves with coarsely toothed margins. Tends to attach and grow flat against a wall with root-like holdfasts.
K		Not used	
M	800	PACHYSANDRA TERMINALIS SPURGE PACHYSANDRA	Shiny evergreen foliage. Small spikes of creamy flowers in April.
N		Not used	
P		Not used	
DL		DAY LILLIES	
SB		SPRING BULBS	



SITE LAYOUT

SCALE: 1" = 10'-0"

