

PARKING

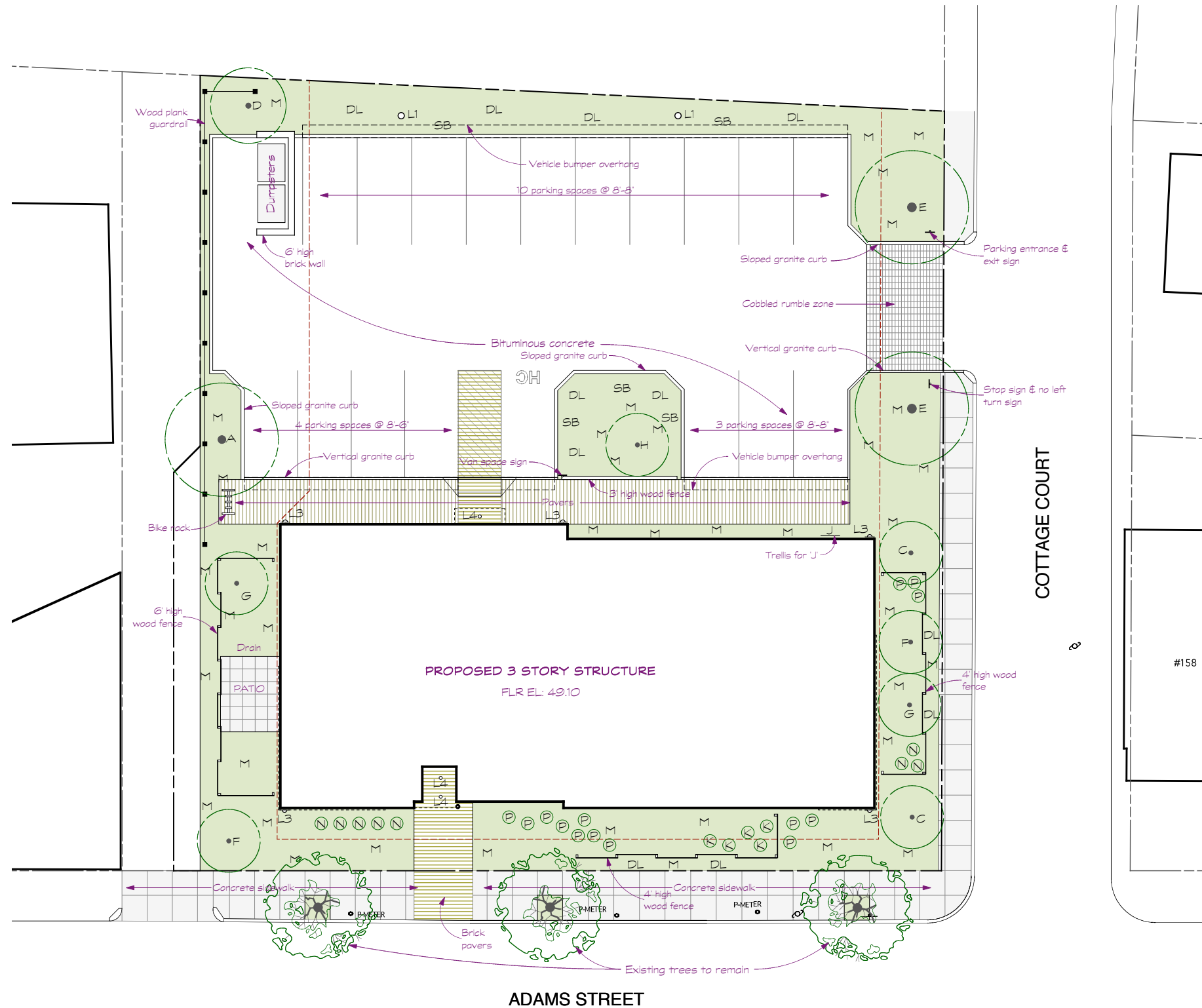
		Required	Provided
Residential	9 units @ 2 / unit =	18 spaces	18 spaces
Handicap space:	15-25 parking spaces	1 space	1 space

LIGHTING LEGEND

- L1 Post Light: Visio Lighting, SET1 w/ adjustable parabolic difuser on 9ft pole
- L2 Not used
- △ L3 Wall Sconce: Luraline Helos Series, CFU
- L4 Down Light: Lightolier 6" recess w/ LED lamp

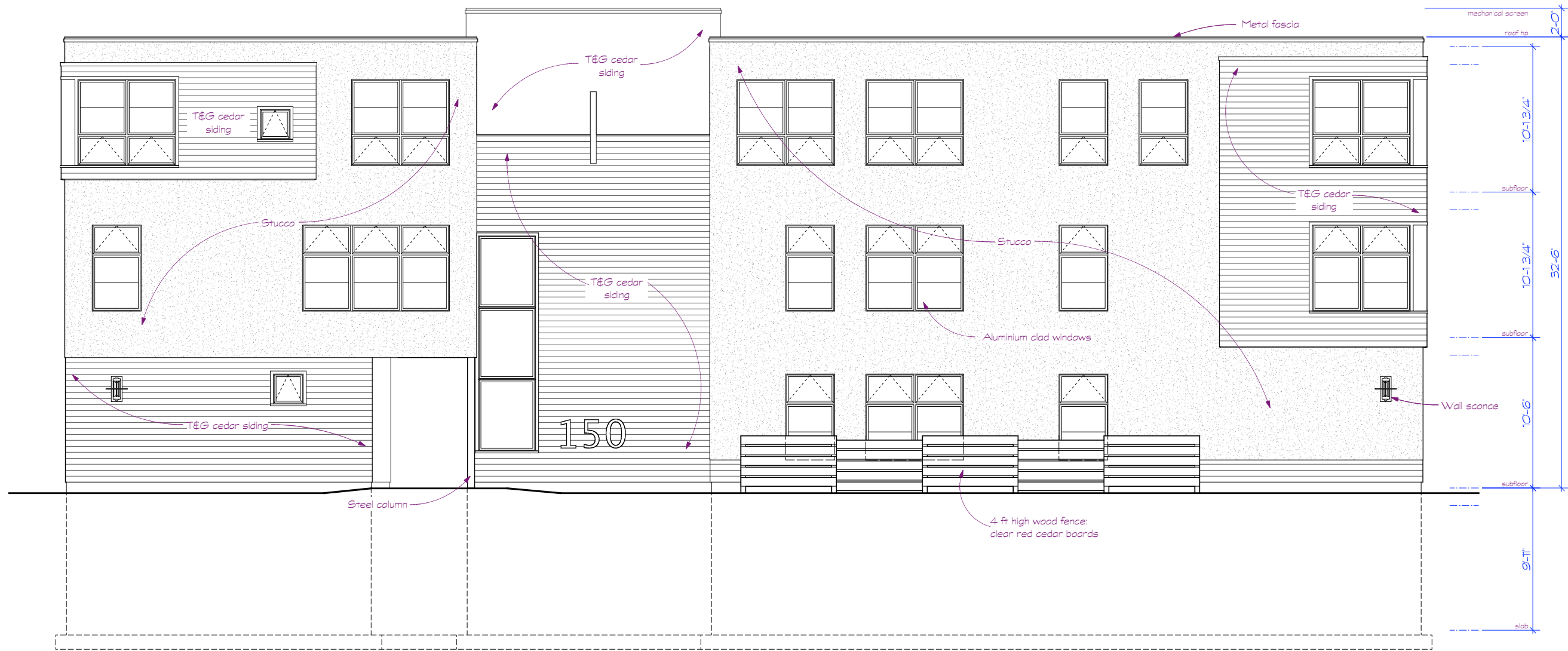
PLANT LIST

KEY	QTY	NAME	NOTES
A	1	GINKGO BILBOA GINKGO BILBOA Small fan shaped bright green leaves turn golden yellow in autumn. Upright and fast growing, becoming symmetrical with maturity. 60' high.	3" CALIPER Male specimen
B		Not used	
C	2	QUERCUS ROBUR 'FASTIGIATA' ENGLISH OAK FASTIGIATE Narrow growing, low-branched tree that retains its columnar form with maturity. 60' high.	3" CALIPER
D	1	QUERCUS PALUSTRIS PIN OAK Dense, pyramidal with downward-growing lower branches. Glossy, deeply green cut leaves become brilliant scarlet in fall. 75' high.	3" CALIPER
E	2	ZELKOVA 'GREEN VASE' JAPANESE ZELKOVA Fast growing, upright with a vase shape similar to American elm. Bronze-red fall foliage. Tolerates city conditions and air pollution. 60' high.	3" CALIPER
F	2	CERCIS CANADENSIS EASTERN REDBUD— PURPLE Wide, upright. Rose-pink flowers along branches in early spring. Foliage turns yellow in autumn. 20' high.	1.5" CALIPER
G	2	CORNUS FLORIDA FLOWERING DOGWOOD— WHITE Small white flat-topped fragrant flowers in late May into June. Green foliage, reddish in autumn. 20' high.	1.5" CALIPER
H	1	HANANELIS 'ARNOLD PROMISE' WITCHHAZEL Vigorous and upright with vase-like branches and stems. Large, lemon-colored flowers with a distinctive lemony fragrance, February—March. Multicolored fall foliage. 20' high.	2" CALIPER
J	1	SCHIZOPHRAGMA HYDRANGEOIDES JAPANESE HYDRANGEA VINE Vigorous clinging vine with lacecap-type white flowers and heart-shaped green leaves with coarsely toothed margins. Tends to attach and grow flat against a wall with root-like holdfasts.	#5 STK
K	5	CORNUS ALBA CULTIVAR 'BUD'S YELLOW' DOGWOOD A Canadian selection with yellow stems and branches, particularly attractive in winter.	2 - 3 ft
M	800	PACHYSANDRA TERMINALIS SPURGE PACHYSANDRA Shiny evergreen foliage. Small spikes of creamy flowers in April.	
N	8	RHODODENDRON CATAWBIENSE PJM CHECKMATE RHODODENDRON Dwarf and slow growing, forming a mound-like compact bush as wide as high. Small lavender-pink flowers.	18" - 24"
P	14	ILEX 'HETZII' HETZ HOLLY Spreading mound. Fast growing convex leaves.	15" - 18"
DL		DAY LILLIES	
SB		SPRING BULBS	



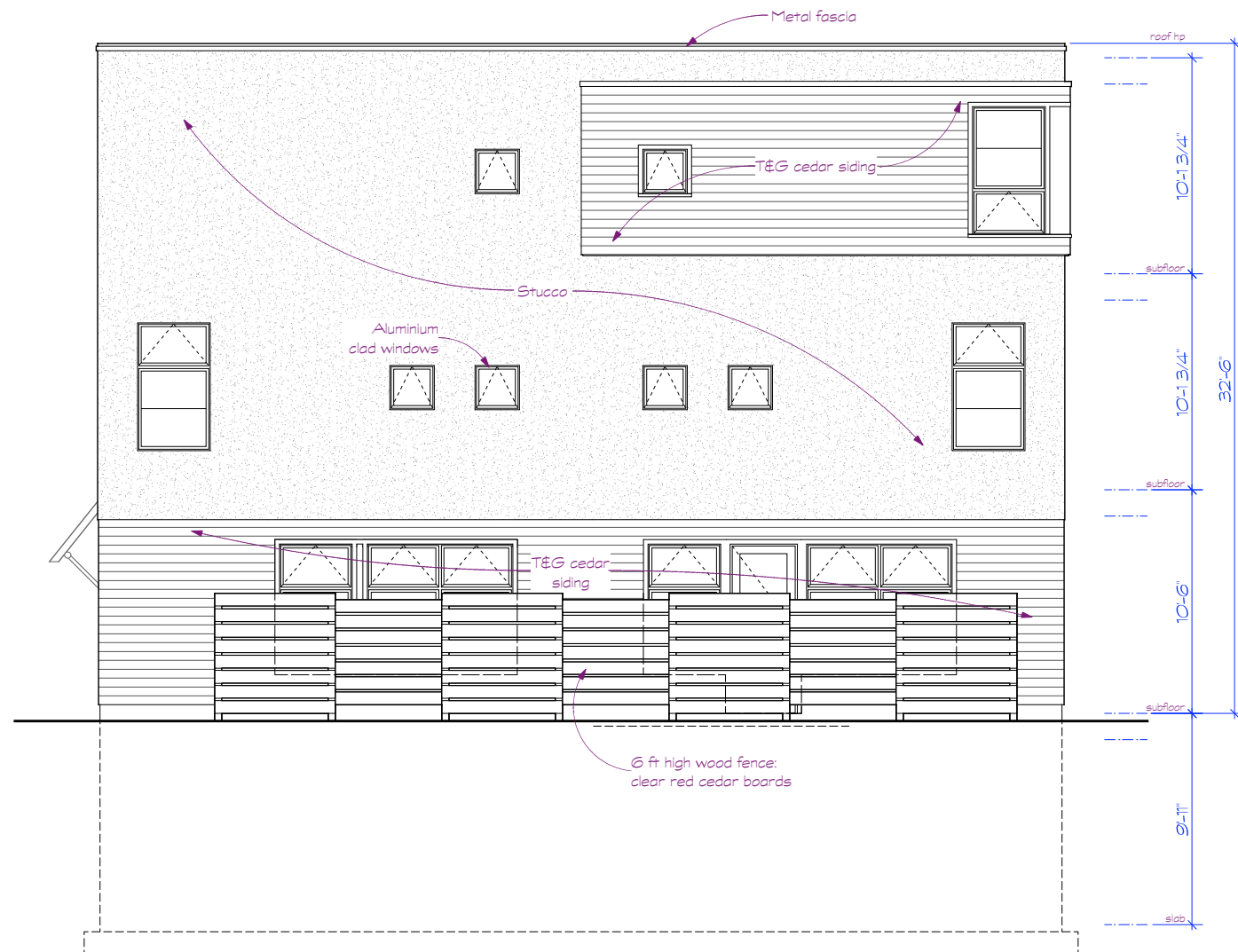
SITE LAYOUT
SCALE: 1" = 10'-0"





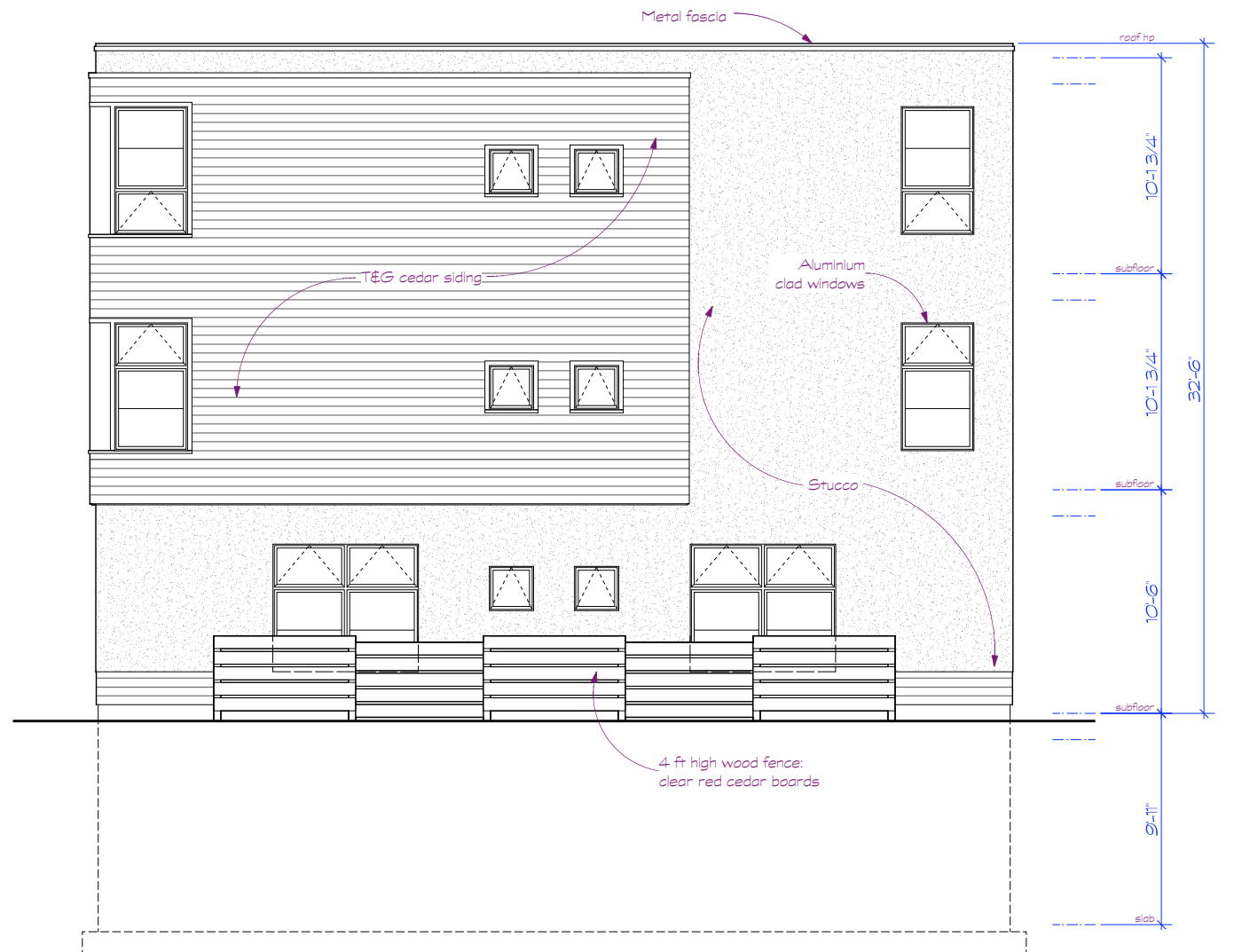
ADAMS STREET ELEVATION 1
 SCALE: 1/8" = 1'-0"





LEFT SIDE ELEVATION 4

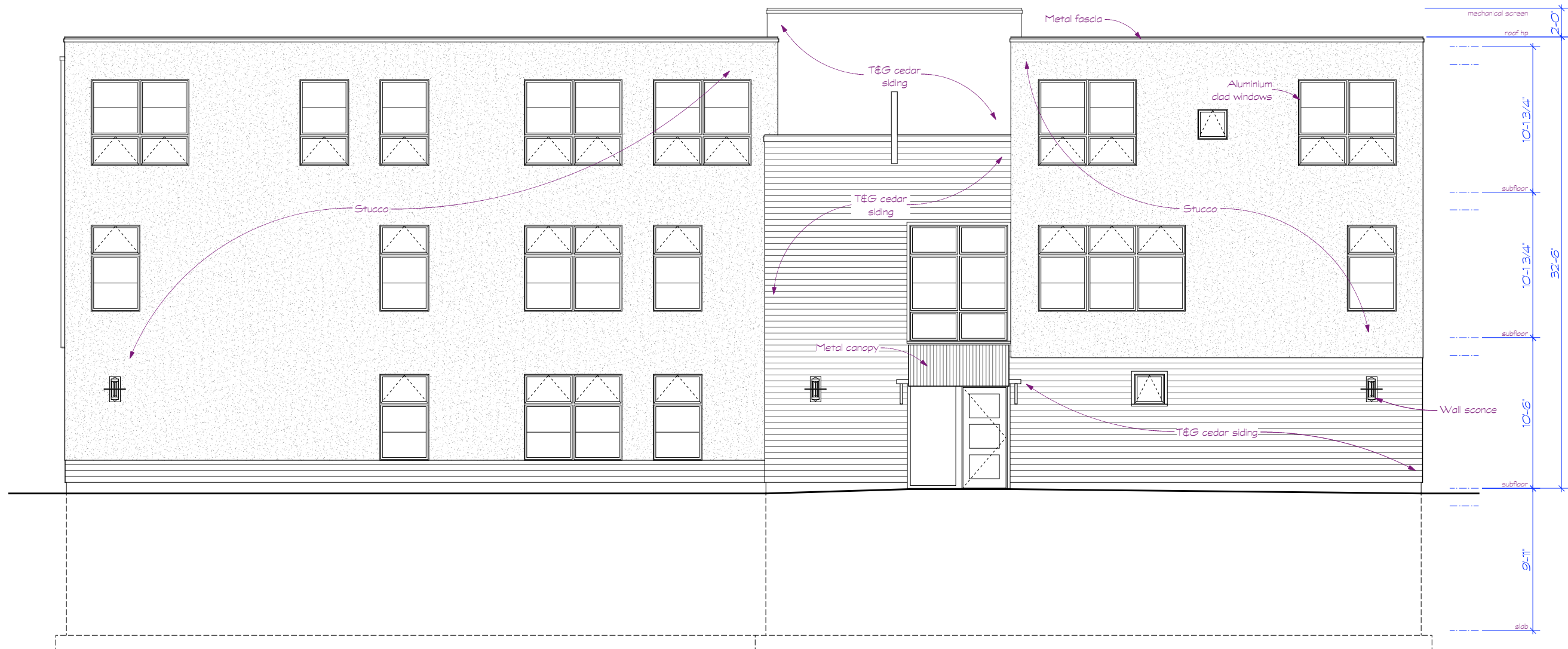
SCALE: 1/8" = 1'-0"



COTTAGE COURT ELEVATION 2

SCALE: 1/8" = 1'-0"



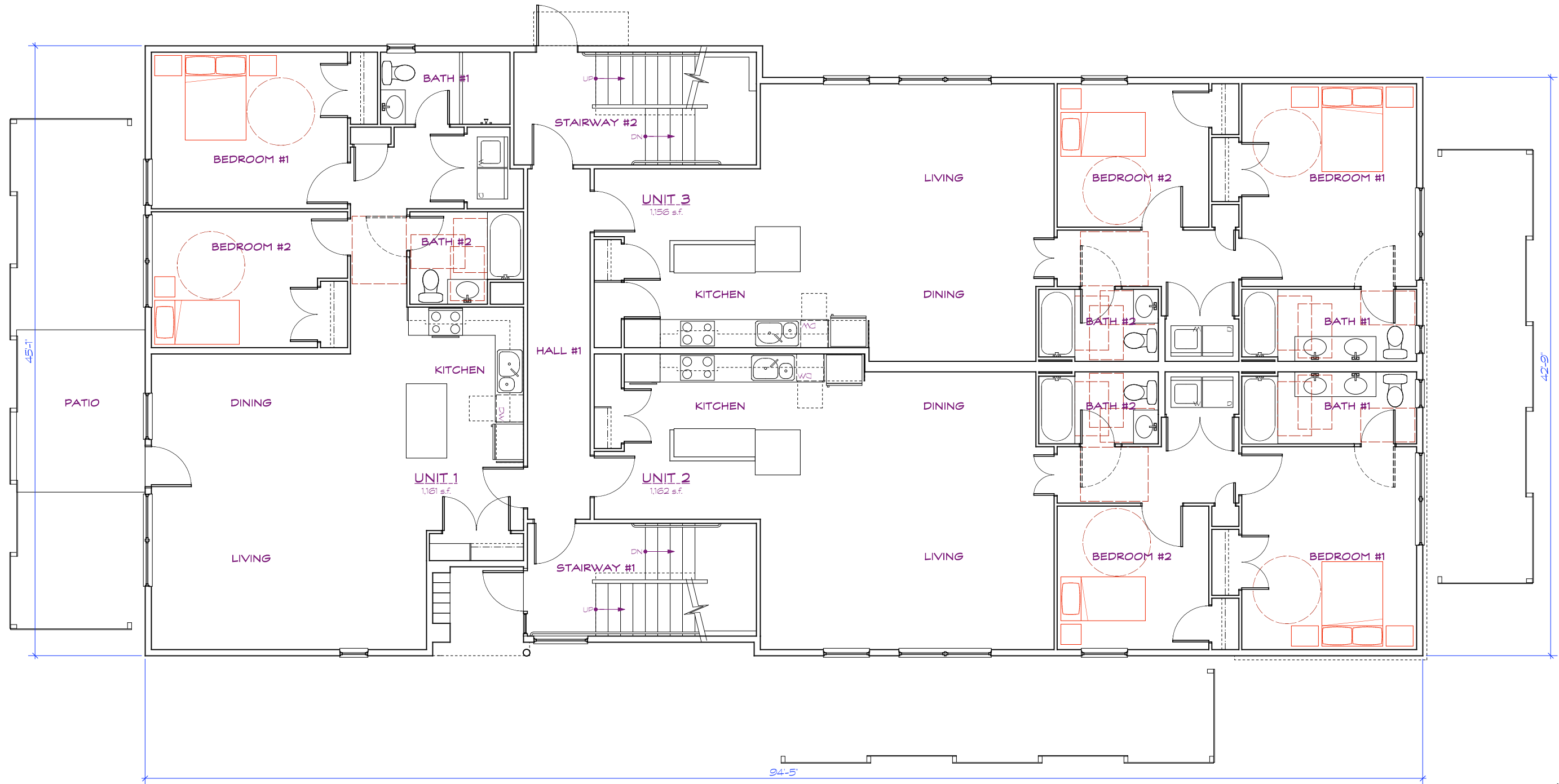


REAR ELEVATION

SCALE: 1/8" = 1'-0"

3





FIRST FLOOR PLAN

SCALE: 1/8" = 1'-0"

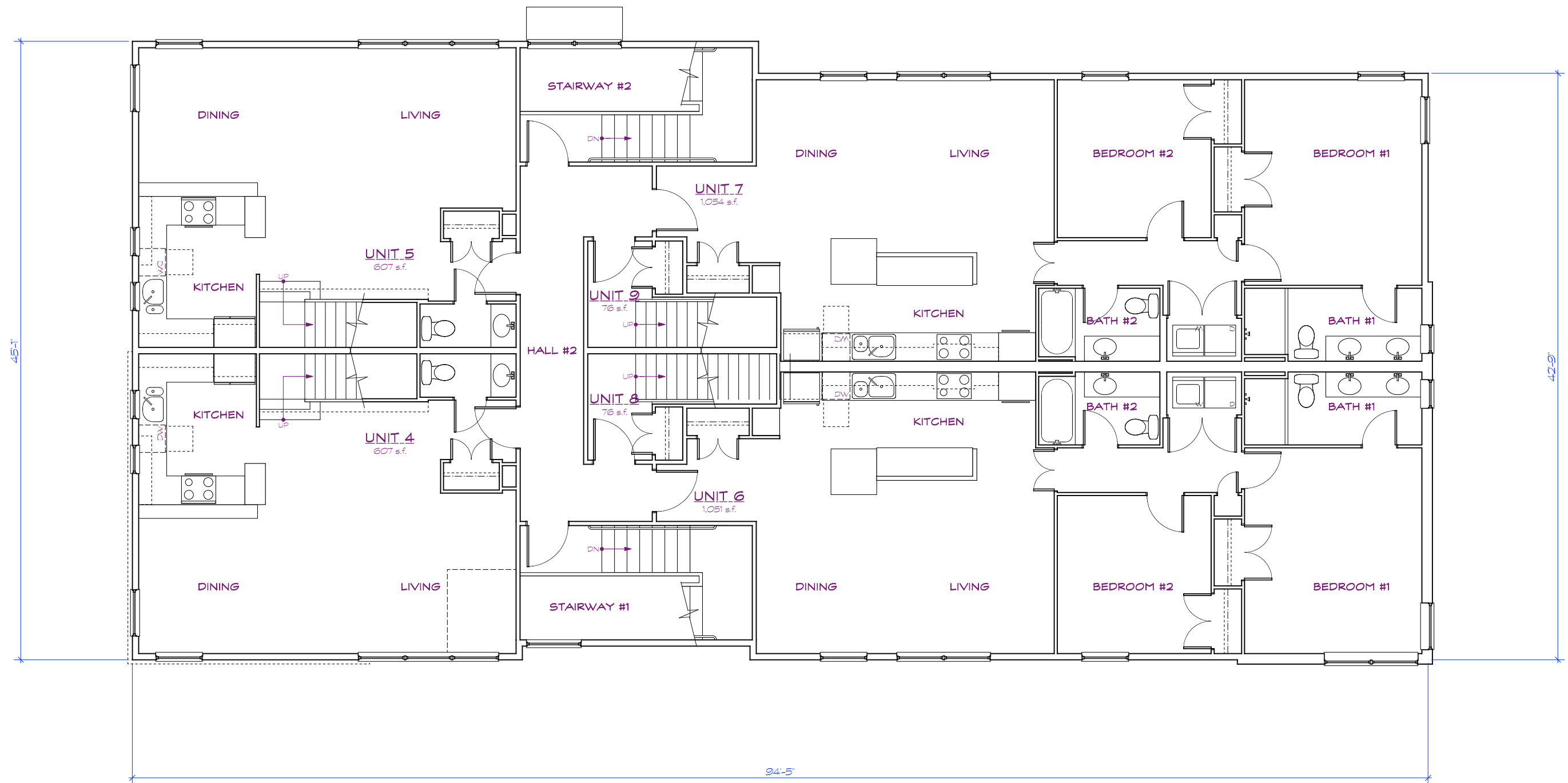
1

AREAS

	Common Space	Unit 1	Unit 2	Unit 3	Unit 4	Unit 5	Unit 6	Unit 7	Unit 8	Unit 9	Total
1st Flr	611.20 s.f.	1,158.85 s.f.	1,162.42 s.f.	1,156.31 s.f.							4,088.78 s.f.
2nd Flr	679.75 s.f.				606.82 s.f.	606.82 s.f.	1,044.28 s.f.	1,047.37 s.f.	76.49 s.f.	76.49 s.f.	4,138.02 s.f.
3rd Flr	230.00 s.f.				659.33 s.f.	664.10 s.f.			1,154.62 s.f.	1,151.25 s.f.	3,859.30 s.f.
Total	1,520.95 s.f.	1,158.85 s.f.	1,162.42 s.f.	1,156.31 s.f.	1,266.15 s.f.	1,270.92 s.f.	1,044.28 s.f.	1,047.37 s.f.	1,231.11 s.f.	1,227.74 s.f.	12,086.10 s.f.

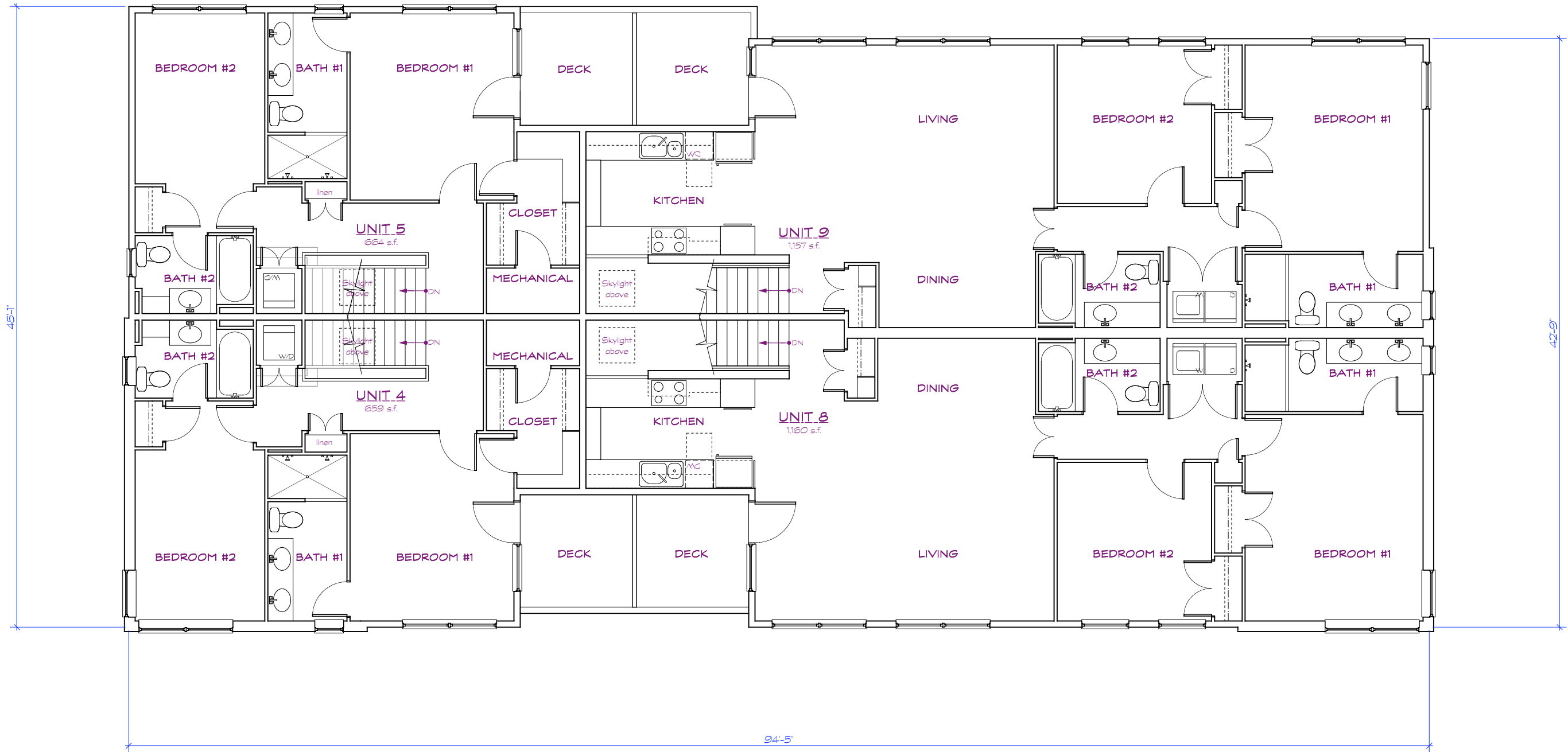
All units are two bedroom units.





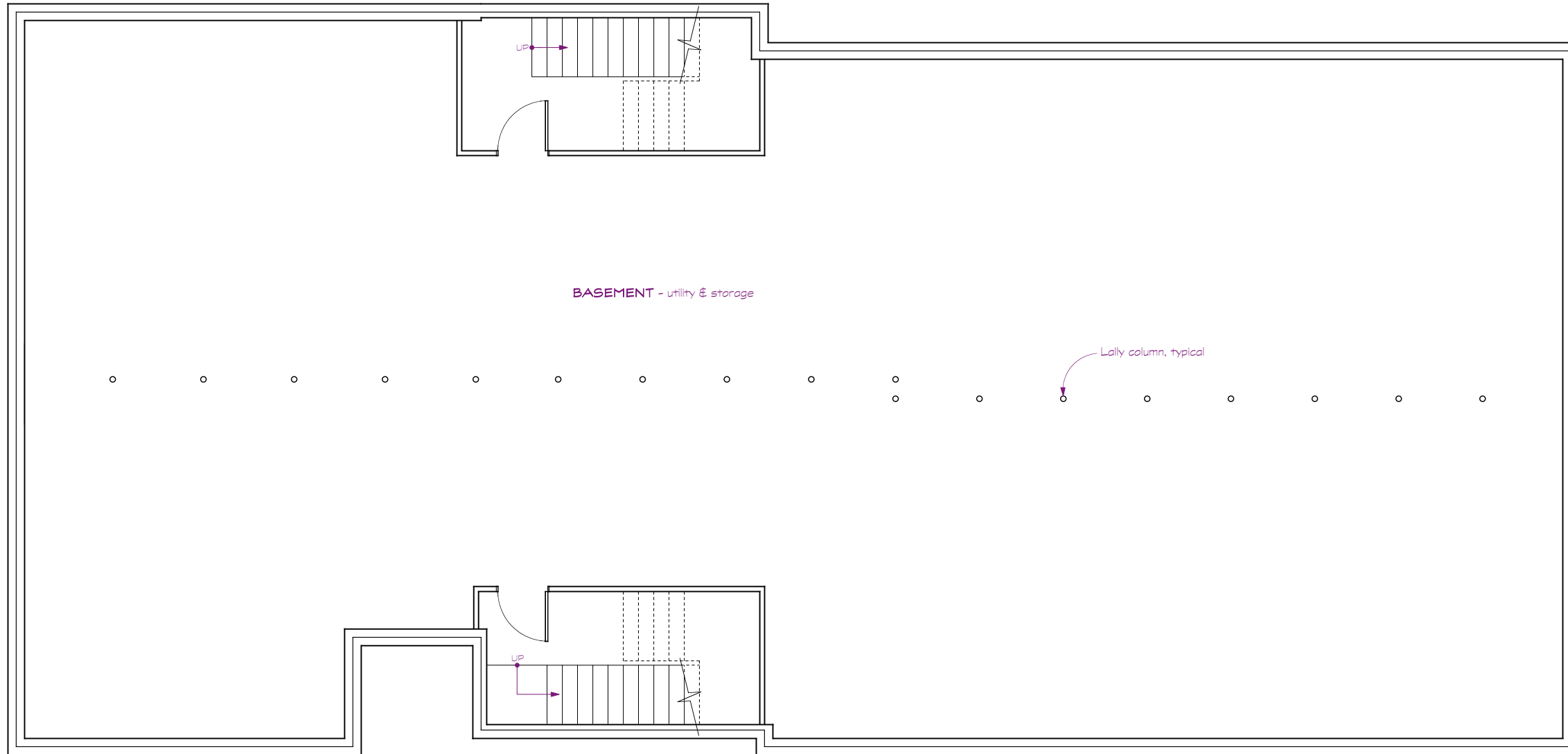
SECOND FLOOR PLAN 2
SCALE: 1/8" = 1'-0"





THIRD FLOOR PLAN
SCALE: 1/8" = 1'-0"





BASEMENT - utility & storage

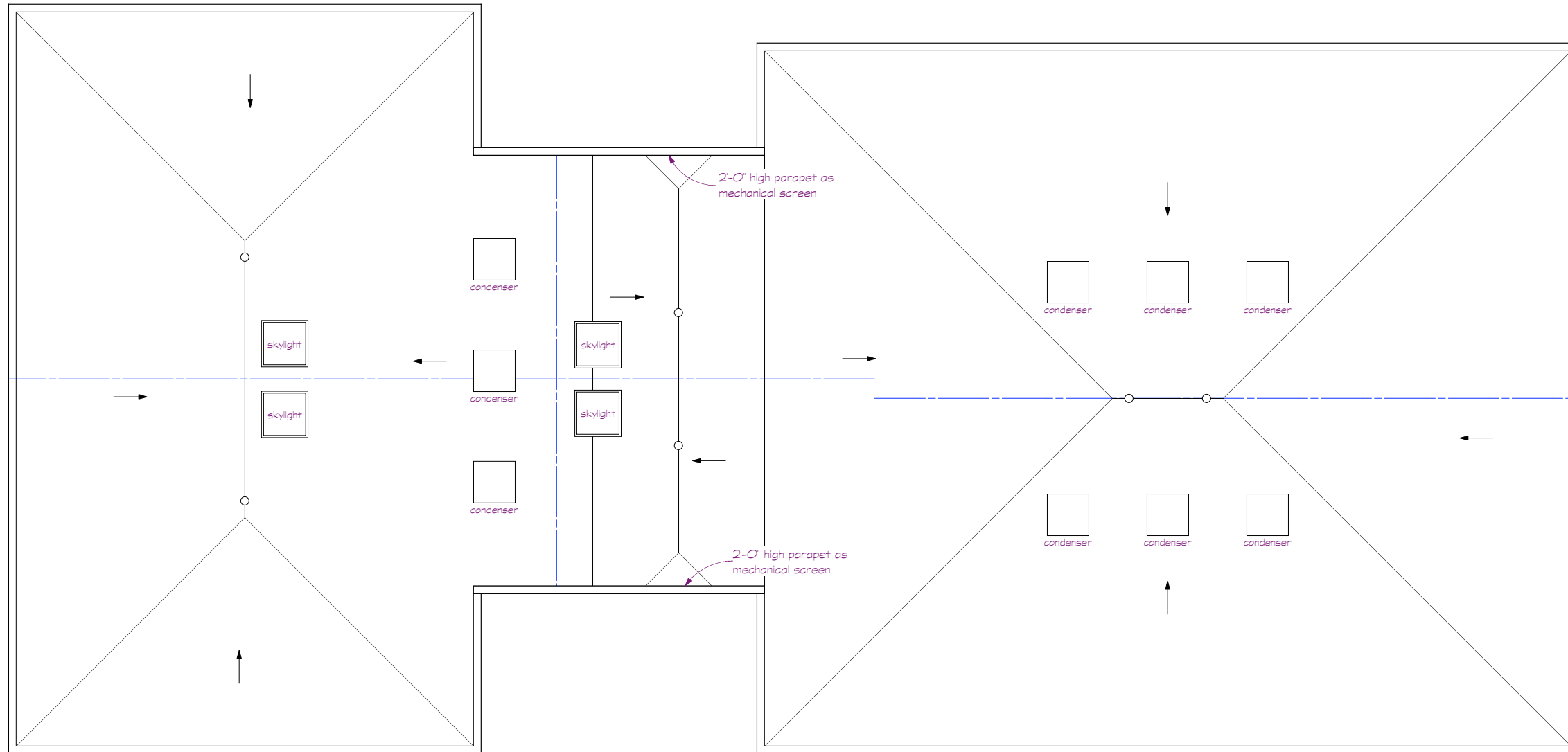
Lally column, typical

BASEMENT PLAN

SCALE: 1/8" = 1'-0"

B





ROOF PLAN

SCALE: 1/8" = 1'-0"

R

