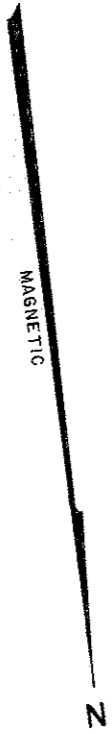


PLAN OF LAND

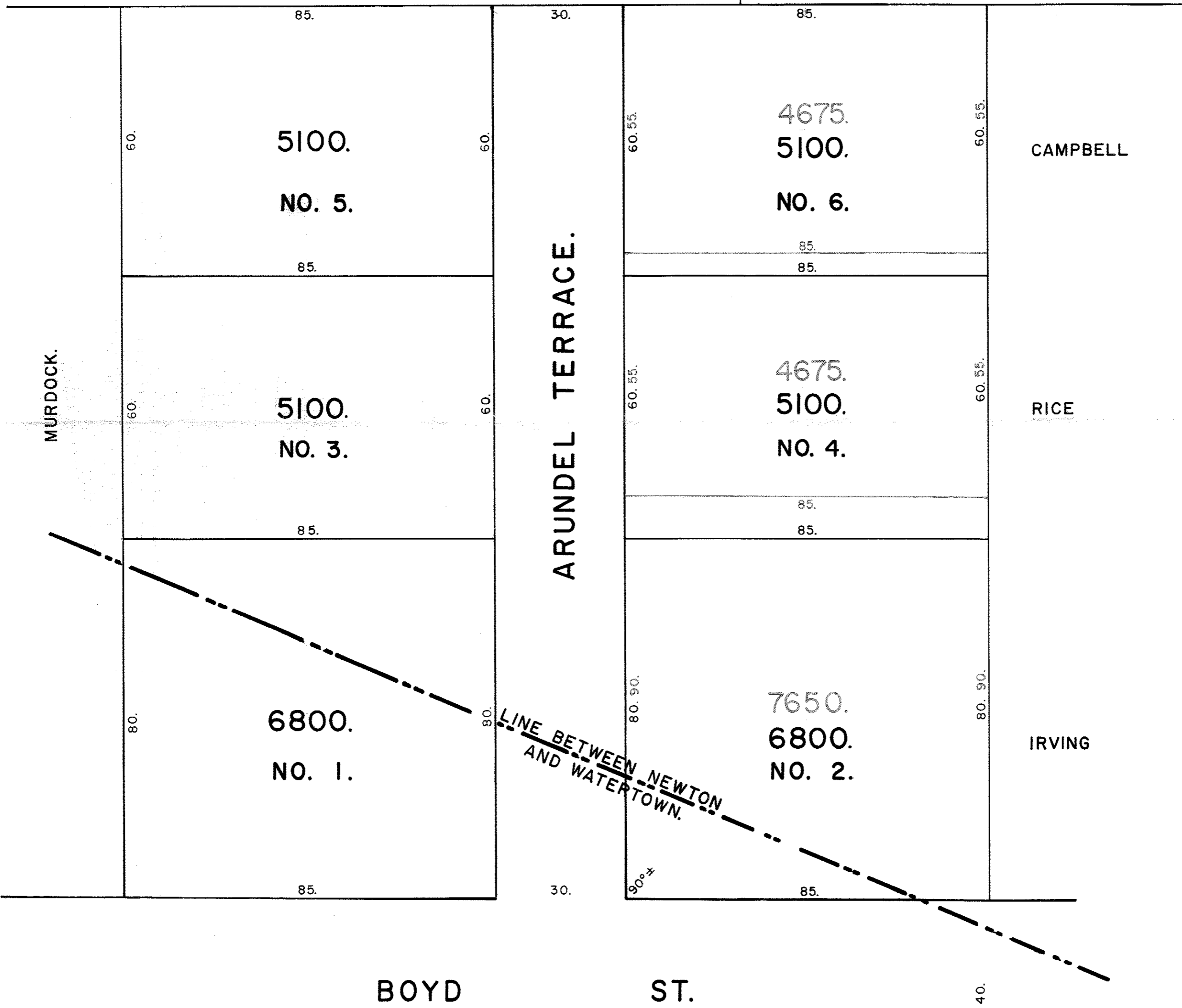
LAND
IN
NEWTON AND WATERTOWN
BELONGING TO
(MRS.) RUTH F. BACON
SCALE 1 IN. = 20 FT., MARCH 22, 1899
E. S. SMILIE, SURV.

(ORIGINAL ON FILE)



ARENS.

GRAVES



2904-11
 MIDDLESEX REGISTRY OF DEEDS, SO. DIST.
 CAMBRIDGE, MASS.
 COPY OF PLAN
 Recorded JUL 3 1901 at 10 h 47 m A M
 In Plan Book 131 Plan 1

Attest *John F. Fayouville* Register