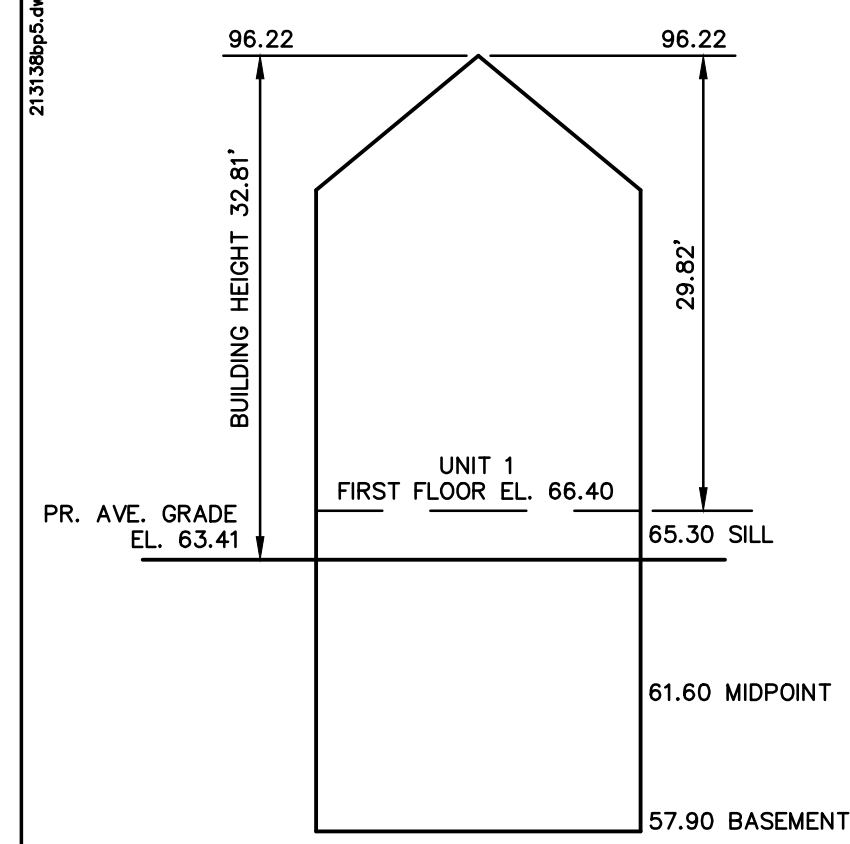
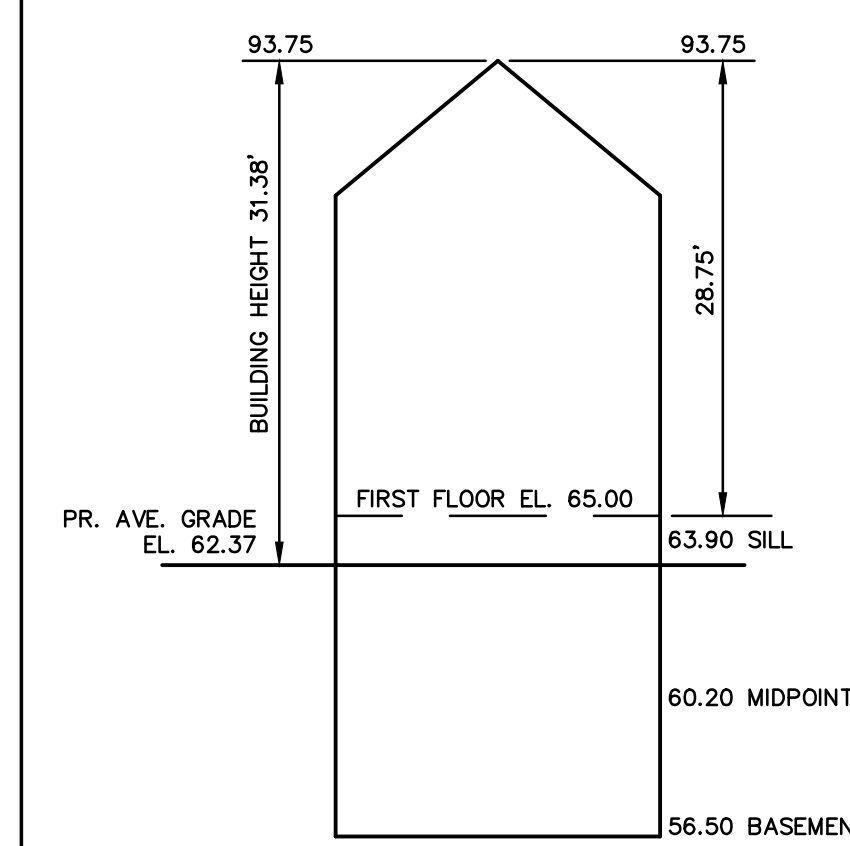


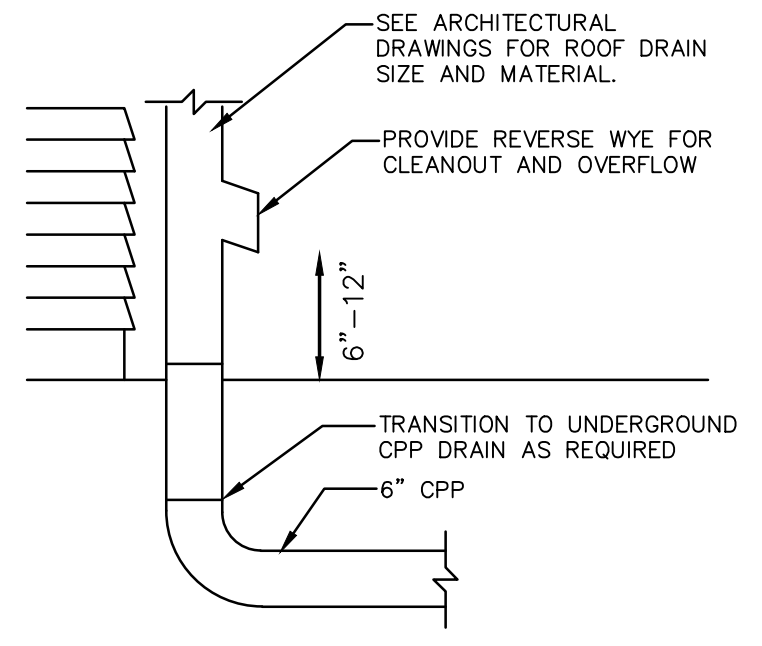
21313862.dwg (2/2013)



PROPOSED BUILDING HEIGHT UNITS 1, 2 & 3
NOT TO SCALE

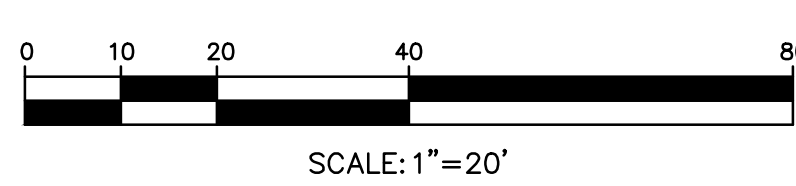


PROPOSED BUILDING HEIGHT UNITS 4 & 5
NOT TO SCALE



ROOF LEADER DETAIL
NOT TO SCALE

DIG SAFE
EXCAVATORS
BEFORE YOU DIG CONTACT THE DIG SAFE CENTER TO PREVENT DAMAGE TO TELEPHONE, GAS OR ELECTRIC UNDERGROUND FACILITIES OF MEMBER UTILITIES. CALL TOLL FREE 1-888-DIG-SAFE. MASSACHUSETTS STATE LAW REQUIRES NOTIFICATION AT LEAST THREE BUSINESS DAYS BEFORE YOU START DIGGING OPERATIONS. IN AN EMERGENCY, CALL IMMEDIATELY.



Address: #75-#77 Auburn Street

Length Weighted Mean Proposed Average Grade Calculation Units 1, 2 & 3

Segment	Length Of Segment in Feet	Height of High Point of Segment	Height of Low Point of Segment	E=(C+D)/2 Average Segment Height	F=BxE
1	38.53	65.00	64.90	64.95	2502.52 Sq. Ft.
2	18.18	63.40	63.00	63.20	1148.98 Sq. Ft.
3	5.31	63.00	62.70	62.85	333.73 Sq. Ft.
4	18.45	62.70	62.50	62.60	1154.97 Sq. Ft.
5	9.53	62.50	62.50	62.50	595.63 Sq. Ft.
6	10.84	63.00	63.70	63.35	686.71 Sq. Ft.
7	19.62	62.80	62.80	62.80	1232.14 Sq. Ft.
8	13.71	62.70	62.70	62.70	859.62 Sq. Ft.
9	22.62	62.80	62.70	62.75	1419.41 Sq. Ft.
10	30.00	63.00	62.80	62.90	1887.00 Sq. Ft.
11	38.33	63.00	63.00	63.00	2388.79 Sq. Ft.
12	19.62	63.00	63.00	63.00	1238.06 Sq. Ft.
13	30.00	64.00	63.00	63.50	1905.00 Sq. Ft.
14	19.37	63.90	63.90	63.90	1237.74 Sq. Ft.
15	8.05	64.00	63.90	63.95	386.90 Sq. Ft.
16	8.45	64.00	64.00	64.00	540.80 Sq. Ft.
17	8.00	65.00	64.70	64.85	518.80 Sq. Ft.
18	13.50	64.70	64.30	64.50	870.75 Sq. Ft.
Total	328.11				20805.54 Sq. Ft.

Total Column F / Total Column B = Average Grade
Average Grade: 63.41'

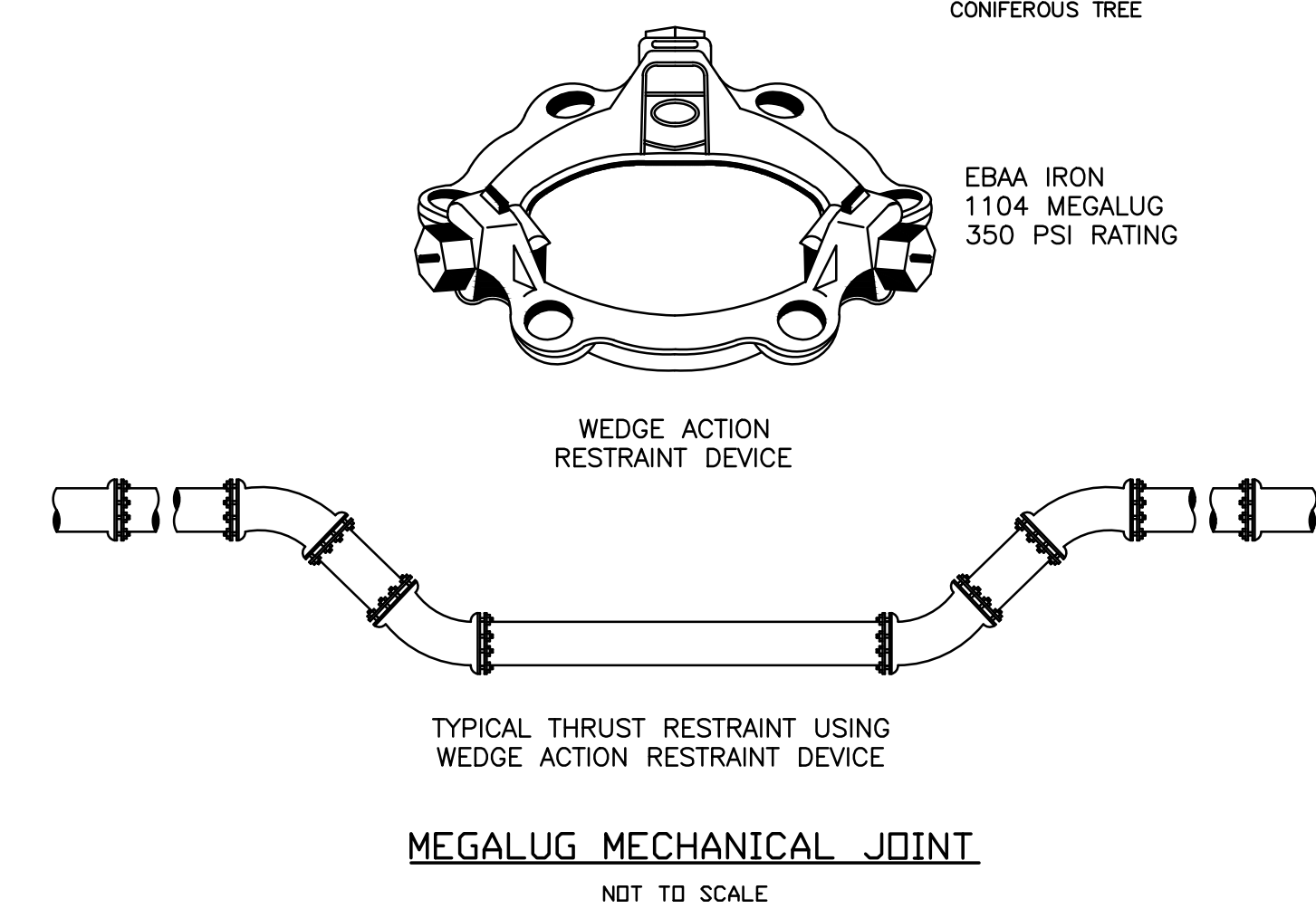
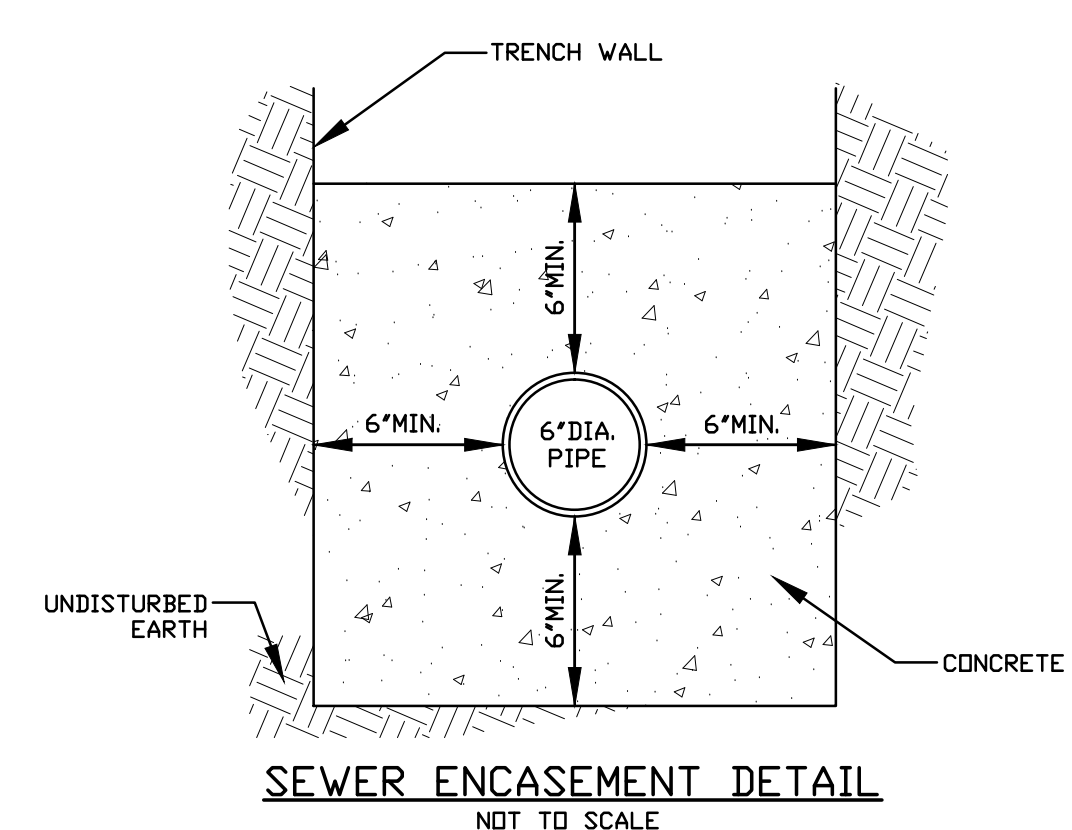
Address: #75-#77 Auburn Street

Length Weighted Mean Proposed Average Grade Calculation Units 4 & 5

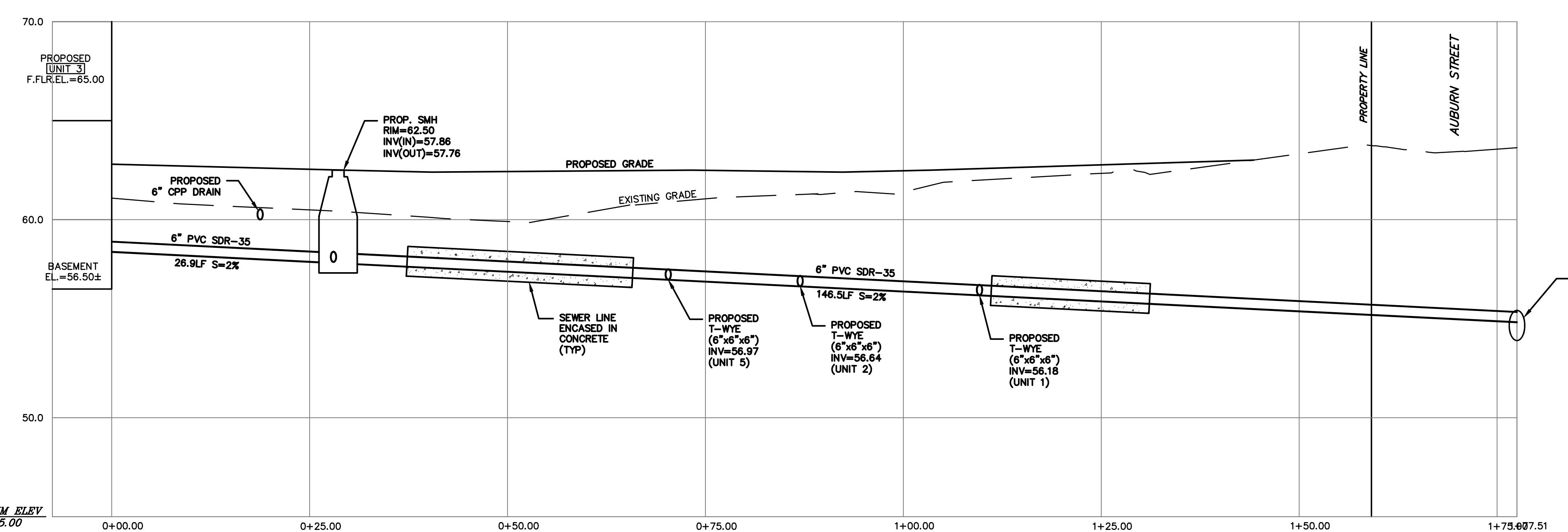
Segment	Length Of Segment in Feet	Height of High Point of Segment	Height of Low Point of Segment	E=(C+D)/2 Average Segment Height	F=BxE
1	20.25	63.00	62.00	62.50	1265.63 Sq. Ft.
2	20.25	61.50	61.50	61.50	1245.38 Sq. Ft.
3	4.00	62.00	62.00	62.00	248.00 Sq. Ft.
4	35.70	61.80	61.80	61.80	2206.26 Sq. Ft.
5	8.16	62.00	62.00	62.00	505.92 Sq. Ft.
6	30.00	61.90	61.90	61.90	1857.00 Sq. Ft.
7	38.33	62.80	62.00	62.40	2266.99 Sq. Ft.
8	6.75	62.80	62.70	62.75	423.56 Sq. Ft.
9	19.62	62.80	62.70	62.75	1231.16 Sq. Ft.
10	20.25	62.80	62.60	62.70	1269.88 Sq. Ft.
11	34.12	62.70	62.60	62.65	2137.62 Sq. Ft.
12	25.62	62.70	62.60	62.65	1605.09 Sq. Ft.
13	13.70	62.70	62.70	62.70	858.99 Sq. Ft.
14	10.75	63.00	62.70	62.85	675.64 Sq. Ft.
15	19.62	62.80	62.80	62.80	1232.14 Sq. Ft.
Total	305.12				19029.04 Sq. Ft.

Total Column F / Total Column B = Average Grade
Average Grade: 62.37'

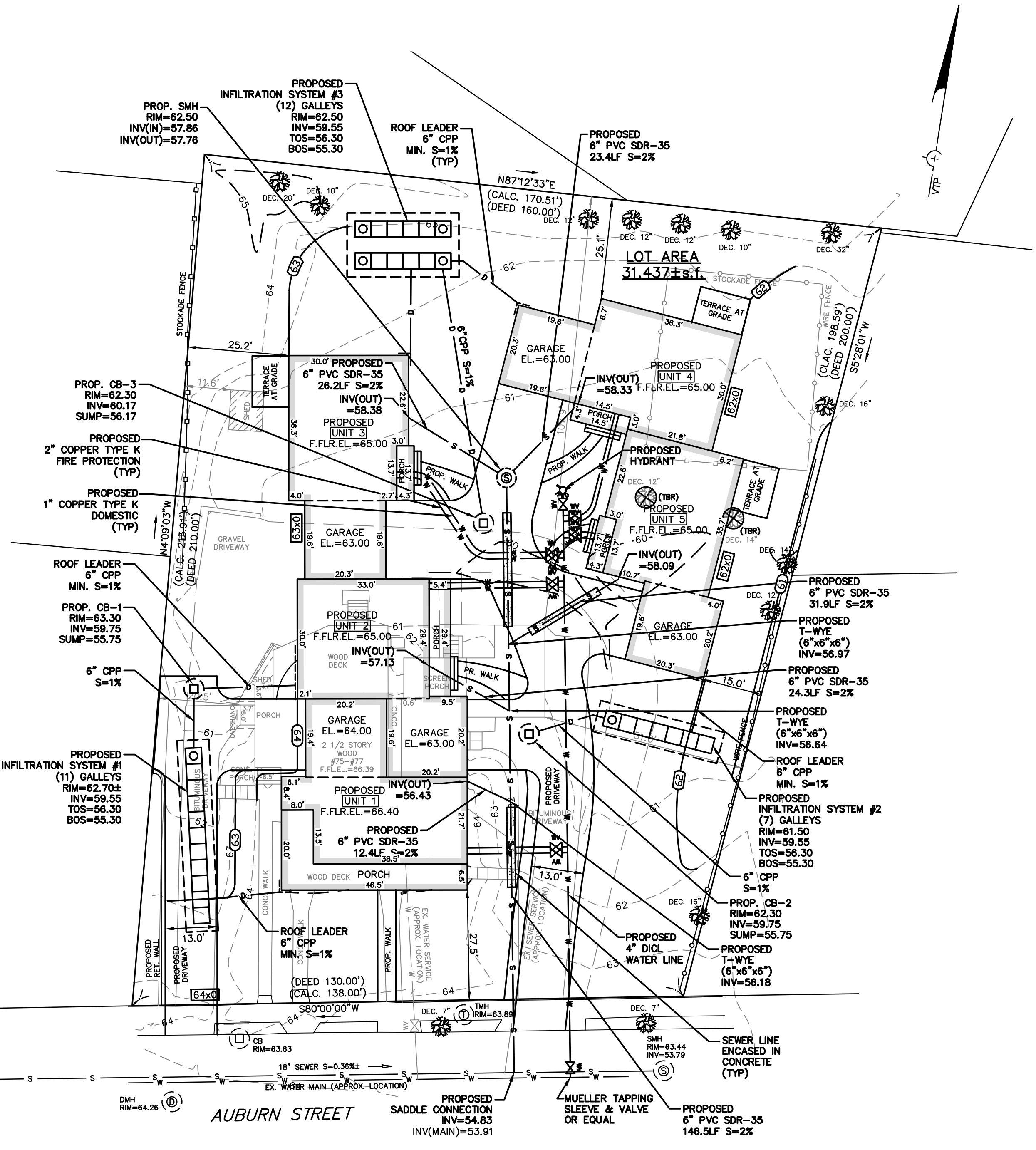
NOTE:
TEST PITS TO BE PERFORMED IN THE LOCATION OF THE PROPOSED INFILTRATION SYSTEM DURING DEMOLITION. THE INFILTRATION SYSTEM WAS DESIGNED IN ACCORDANCE WITH THE MASSACHUSETTS DEP HYDROLOGY HANDBOOK. NRCS HYDROLOGIC SOIL GROUP 'A' AND GROUNDWATER ELEVATION OF 53.30 (2- FEET OF SEPARATION TO BOTTOM OF SYSTEM) WAS ASSUMED. AFTER TEST PIT IS PERFORMED CONTRACTOR/OWNER SHALL CONFIRM RESULTS WITH ENGINEER.



PROPOSED SEWER PROFILE
SCALE: 1" = 10' (HORIZONTAL)
SCALE: 1" = 4' (VERTICAL)



- LEGEND**
- BUILDING
 - PROPERTY LINE W/ BEARING DISTANCE
 - CONTOUR
 - STOCKADE FENCE
 - CHAINLINK FENCE
 - PICKET FENCE
 - SEWER LINE
 - DRAIN LINE
 - WATER LINE
 - GAS LINE
 - GAS VALVE
 - WATER VALVE
 - DRAIN MANHOLE
 - SEWER MANHOLE
 - CATCH BASIN
 - UTILITY POLE
 - LIGHT POLE
 - DECIDUOUS TREE
 - CONIFEROUS TREE



ZONING CHART
NEWTON, MASSACHUSETTS

REGULATION	REQUIRED	EXISTING	PROPOSED
LOT AREA	7,000s.f.	31,437±s.f.	N/C
LOT FRONTAGE	70.0'	138.00'	N/C
FRONT SETBACK	25.0'	27.5'	27.5'
SIDE SETBACK	7.5'	20.5'	15.0'
REAR SETBACK	15.0'	107.9'	25.1'
BUILDING HEIGHT	36.0'	33.60'	32.81'/31.38'
AVERAGE GRADE	-	62.62	63.41/62.37
LOT COVERAGE	30.0%	8.2%	24.8%
OPEN SPACE	50.0%	72.4%	59.7%

TOPOGRAPHIC SITE PLAN
NEWTON, MASSACHUSETTS
SHOWING PROPOSED CONDITIONS AT
#75-#77 AUBURN STREET
SCALE: 1in.=20ft. DATE: AUGUST 28, 2013
REVISED: OCTOBER 3, 2013
PROJECT: 213138



LAND SURVEYORS - CIVIL ENGINEERS. 132
ADAMS STREET 2ND FLOOR SUITE 3
NEWTON, MA 02458
(617) 332-8271