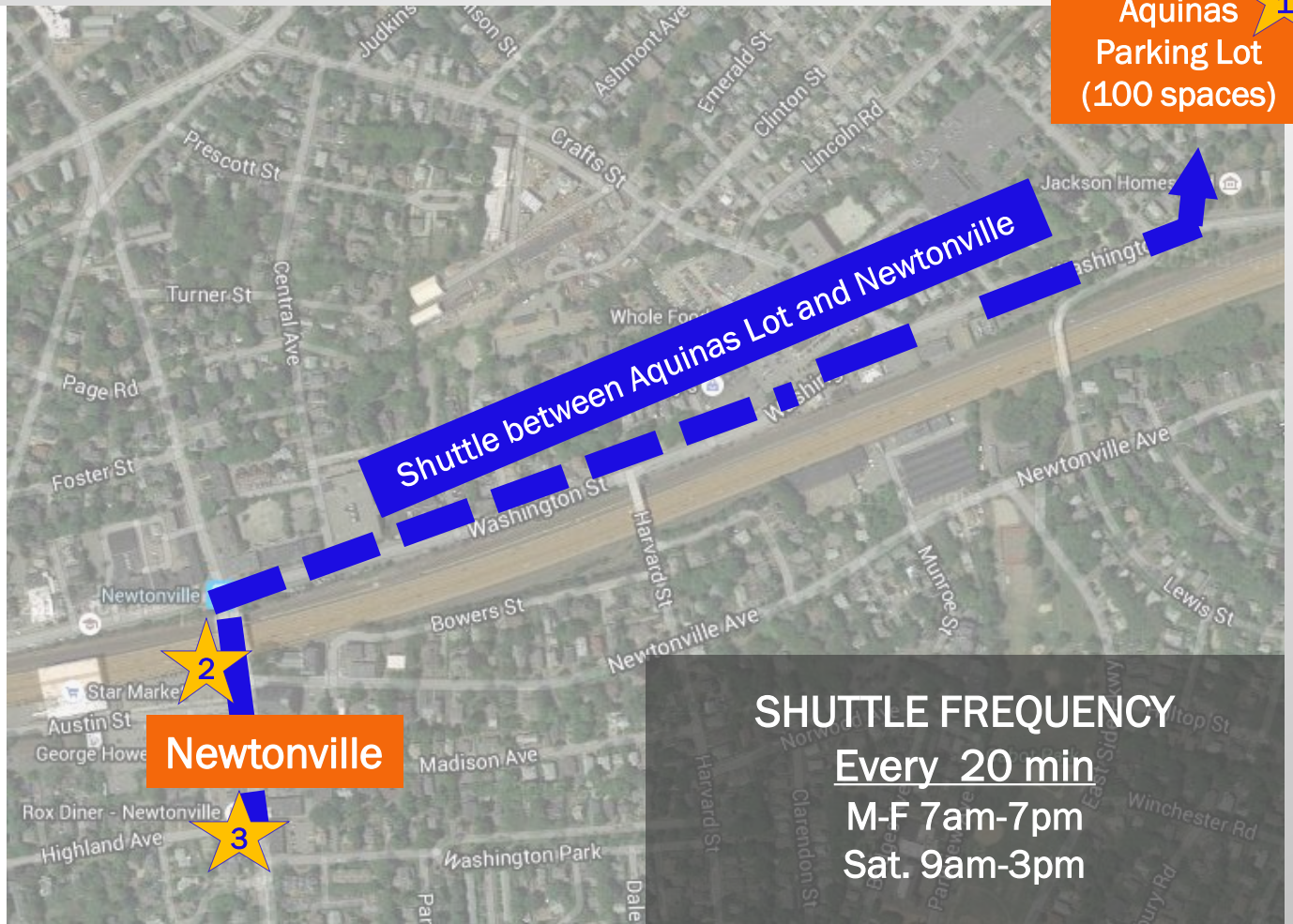


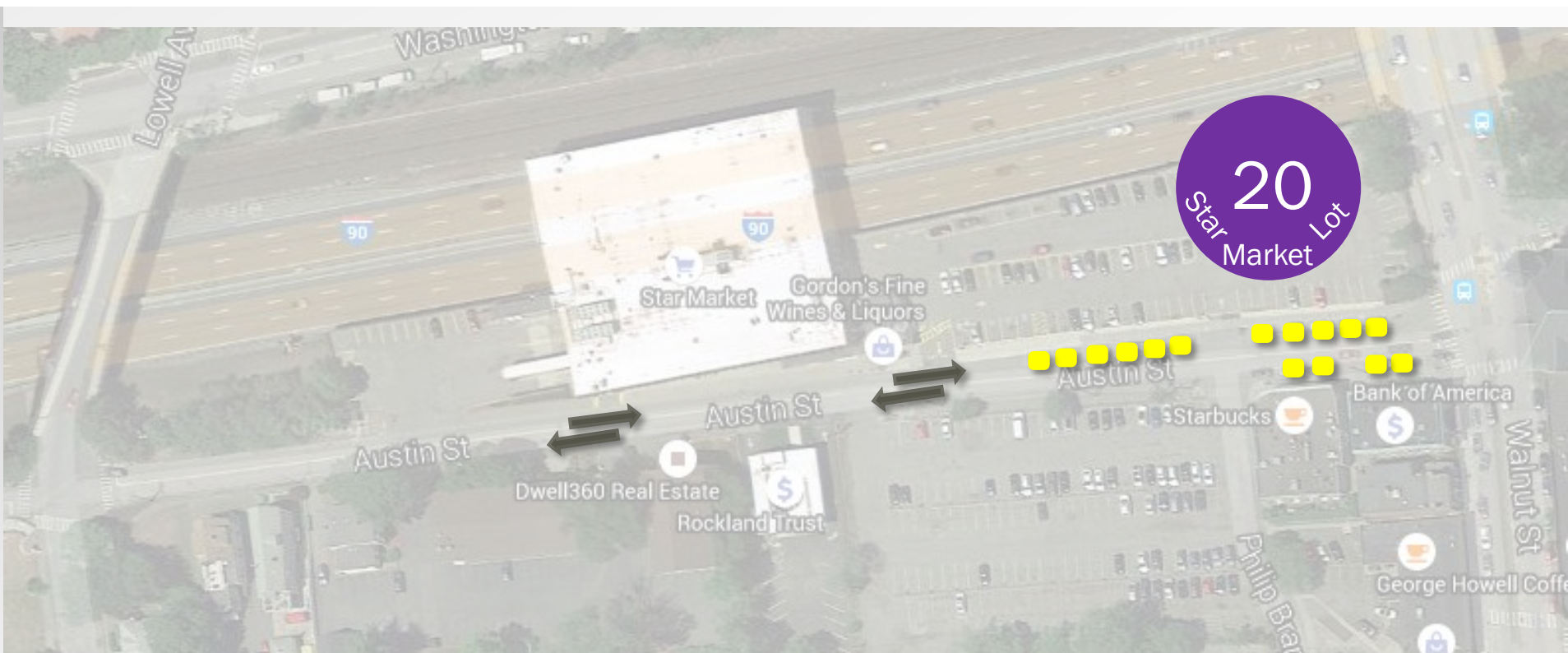
Proposed Parking Changes in Newtonville During Austin St Lot Construction City of Newton

11.10.2015

Free Shuttle Parking in the Aquinas Lot During Construction



Proposed Parking Spaces in Star Market Lot



LEGEND

- Existing 1-hour metered parallel parking spaces (15)
- Proposed 2-hour metered parking spaces in the Star Market Lot (20)

TOTAL PROPOSED SHORT-TERM PARKING ON AUSTIN ST AND IN STAR MARKET LOT = **35 spaces**

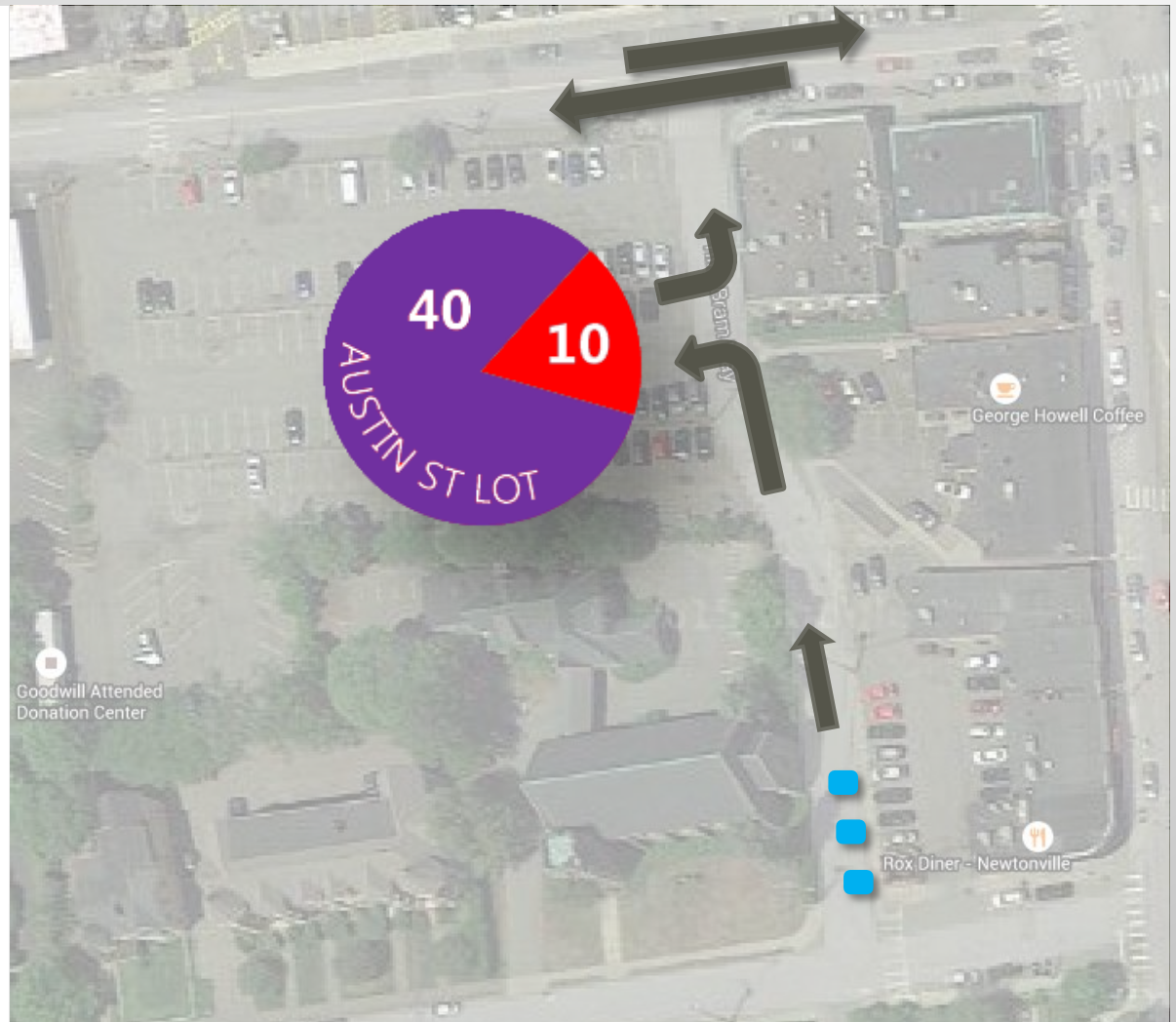
No change to parking or traffic on Austin Street is proposed

Proposed Parking Spaces in Austin Street Lot and along Philip Bram Way

- Proposed 2-hour metered parking spaces (40)
- Proposed 30-minute metered parking spaces (10)
- Proposed free 30-minute spaces (3)

TOTAL PROPOSED SHORT-TERM PARKING SPACES IN AUSTIN STREET LOT or on PHILIP BRAM WAY = 53.

Philip Bram Way is proposed to be one-way Northbound, with parking on the East side.



Proposed Changes to Parking in Newtonville During Construction

Summary of Proposed Changes (173 spaces)

Medium/Long-term Parking

- ❖ New satellite parking at Aquinas School
 - **100** parking spaces without time limits (non-metered/free)
 - Connected via free frequent shuttle with stops at: Walnut @ Austin and Walnut @ Highland

Short-term Parking

- ❖ Public Parking in the Star Market Lot
 - **20** new 2-hour parking spaces (metered, monitored by attendant)
- ❖ New Parking along Philip Bram Way (one way Northbound)*
 - **3** new 30-minute parking spaces (non-metered/free)
- ❖ Retained Parking within the Austin Street Lot*
 - **40** 2-hour metered parking spaces
 - **10** 30-minute metered parking spaces
 - Pricing to remain as currently provided (Metered M-F/Free on Sat.)

All current metered & limited-time parking spaces in the Village remain unchanged

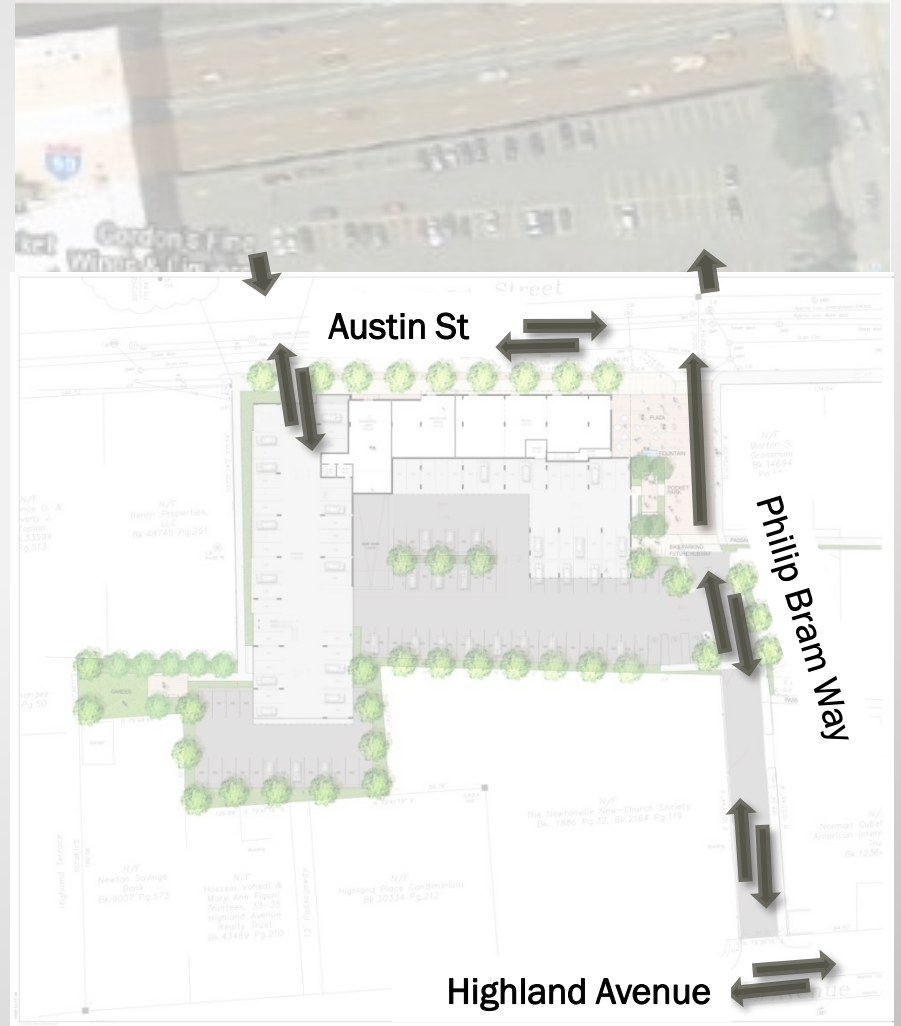
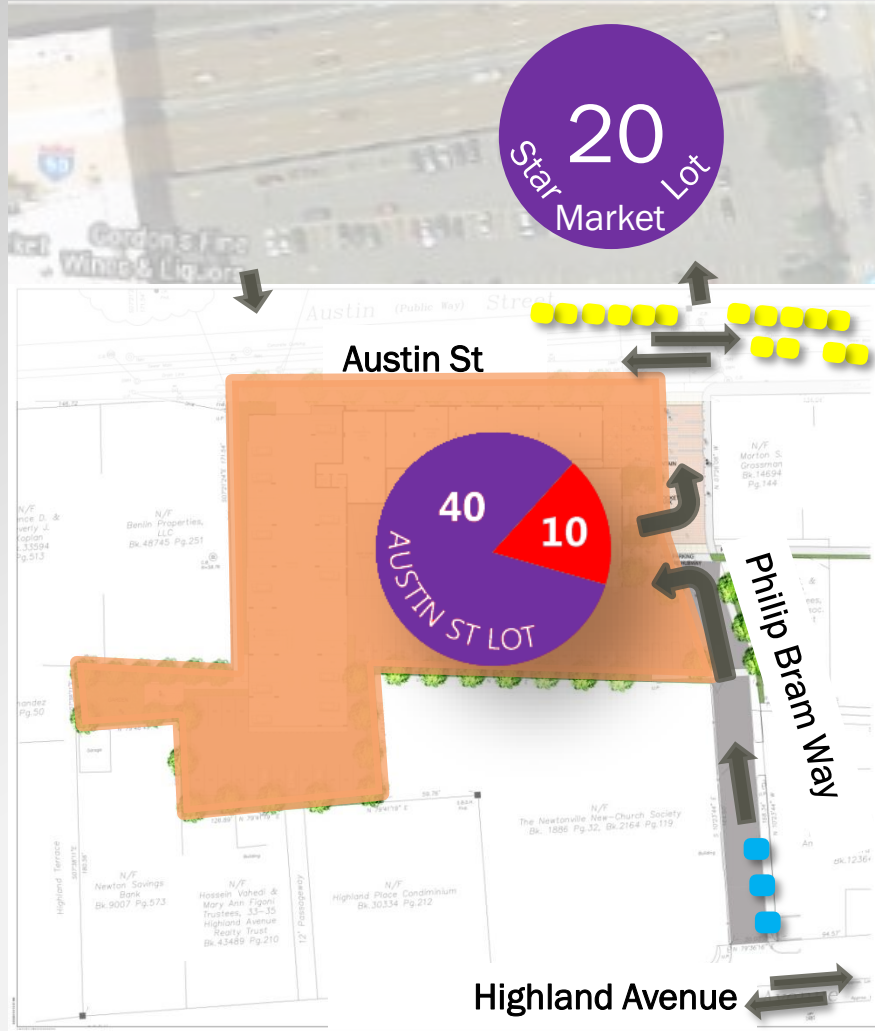
** Subject to Approval by Traffic Council*

During and Post-Construction Compared

City of Newton

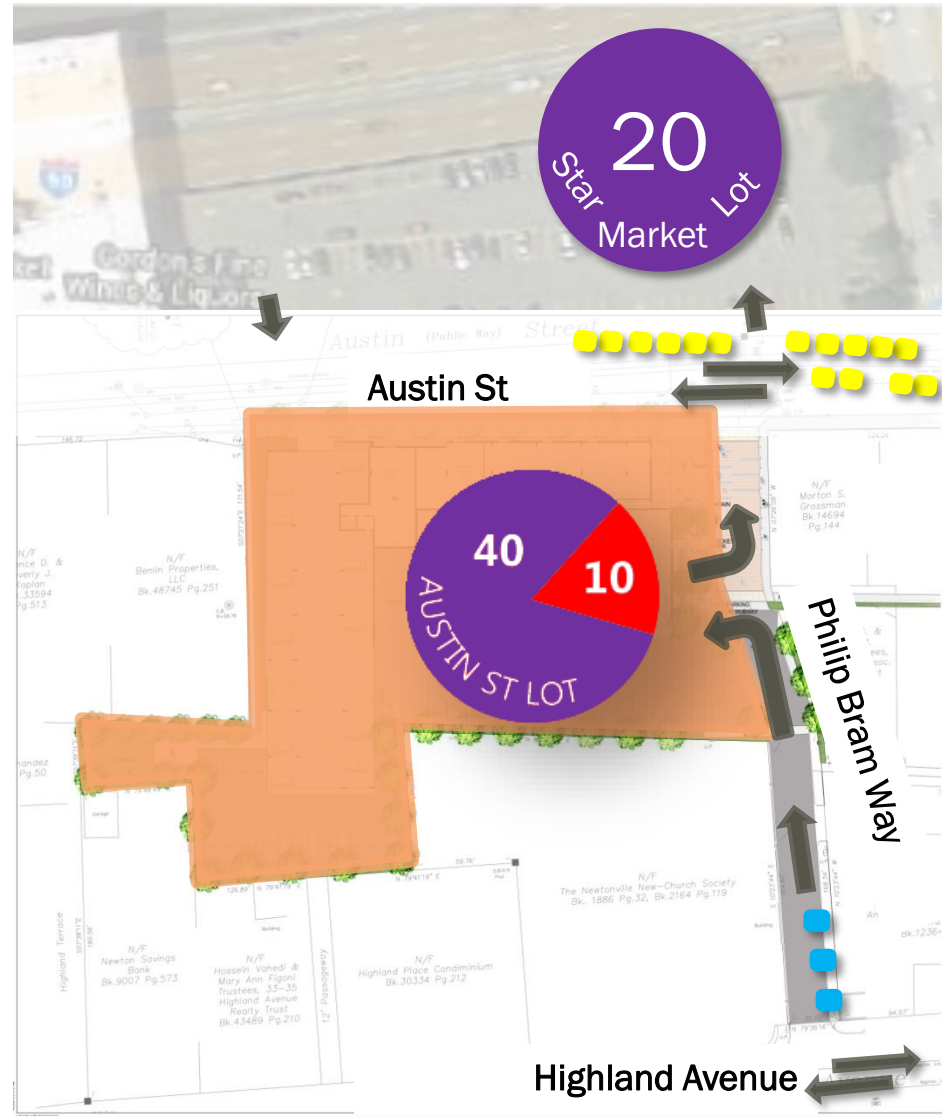
11.10.2015

Comparing During and Post-Construction



DURING CONSTRUCTION

- Existing 1-hour metered parking spaces (15)
- Proposed 2-hour metered parking spaces (60)
- Proposed 30-minute metered parking spaces (10)
- Proposed free 30-minute spaces (3)



POST CONSTRUCTION



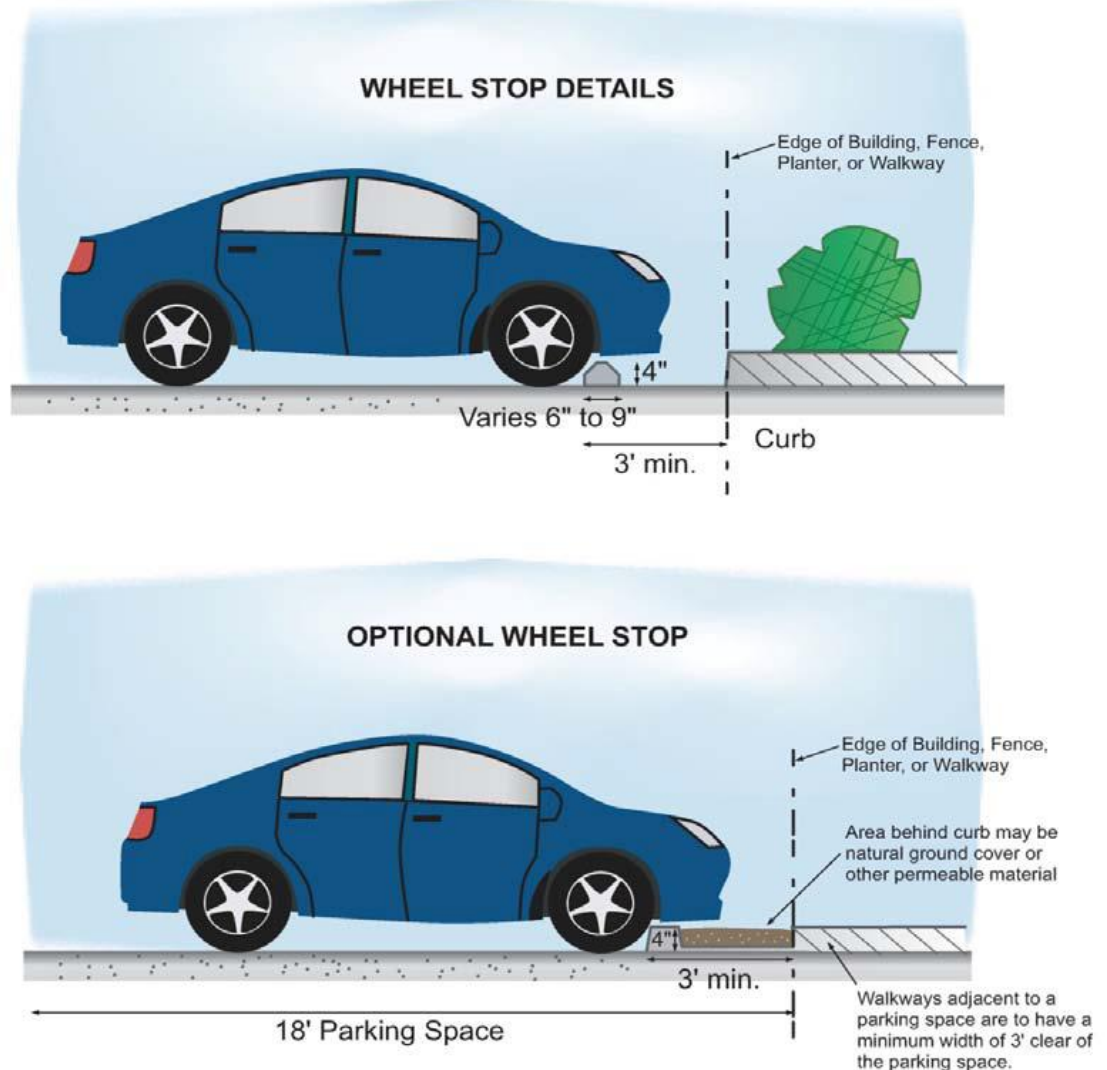
Parking Lot Details

City of Newton

11.10.2015

Parking Lot Detail: Curb Stops

Curb or Wheel-stops are recommended to prevent larger vehicles from overhanging adjacent sidewalks



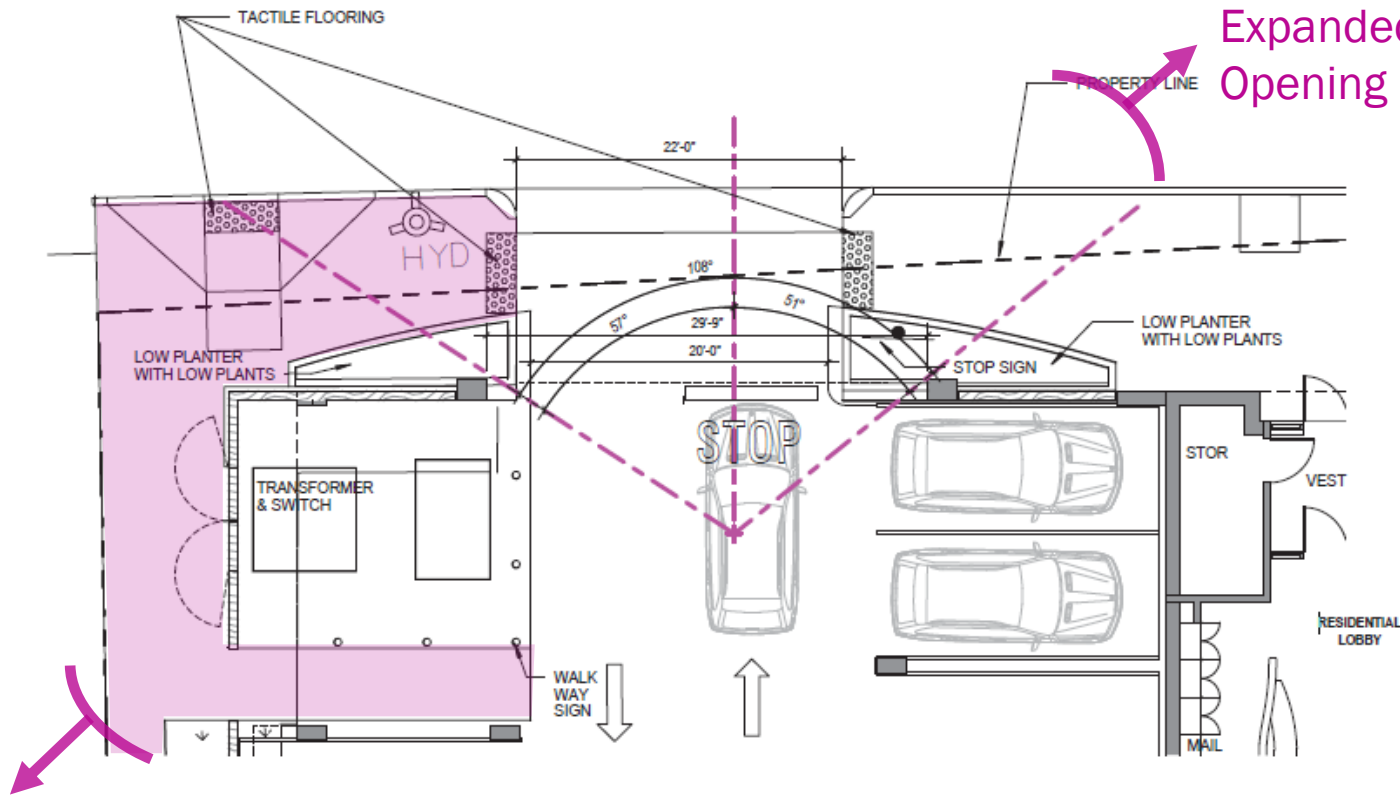
Parking Lot Detail: Austin Street Access



- Stop sign and stop bar behind the sidewalk

Parking Lot Detail: Austin Street Access

ADD Inc Stantec





Expanded Opening

- Stop sign and stop bar behind the sidewalk
- Expanded View for Exiting Vehicles
- Separated Pedestrian Route

Pedestrian Route

REVISED PLAN OF AUSTIN STREET PARKING ENTRANCE/EXIT

AUSTIN STREET PARTNERS LLC  

Shared Spaces — Slow by Design

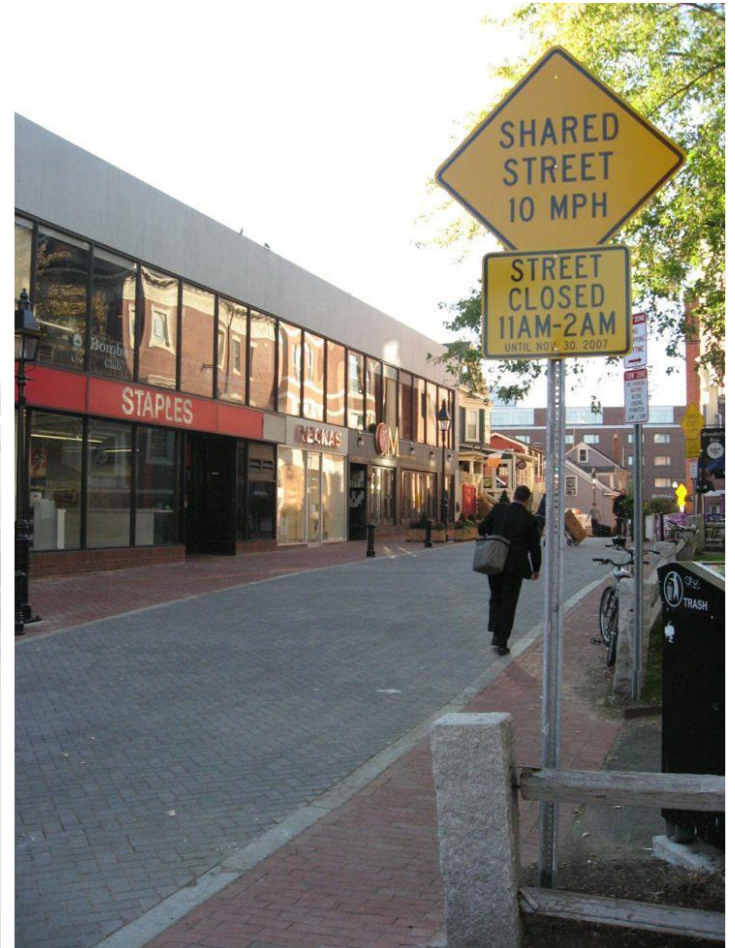
City of Newton

11.10.2015

When is a Shared Street appropriate?

A commercial shared street environment should be considered in places where pedestrian activity is high and vehicle volumes are either low or discouraged.

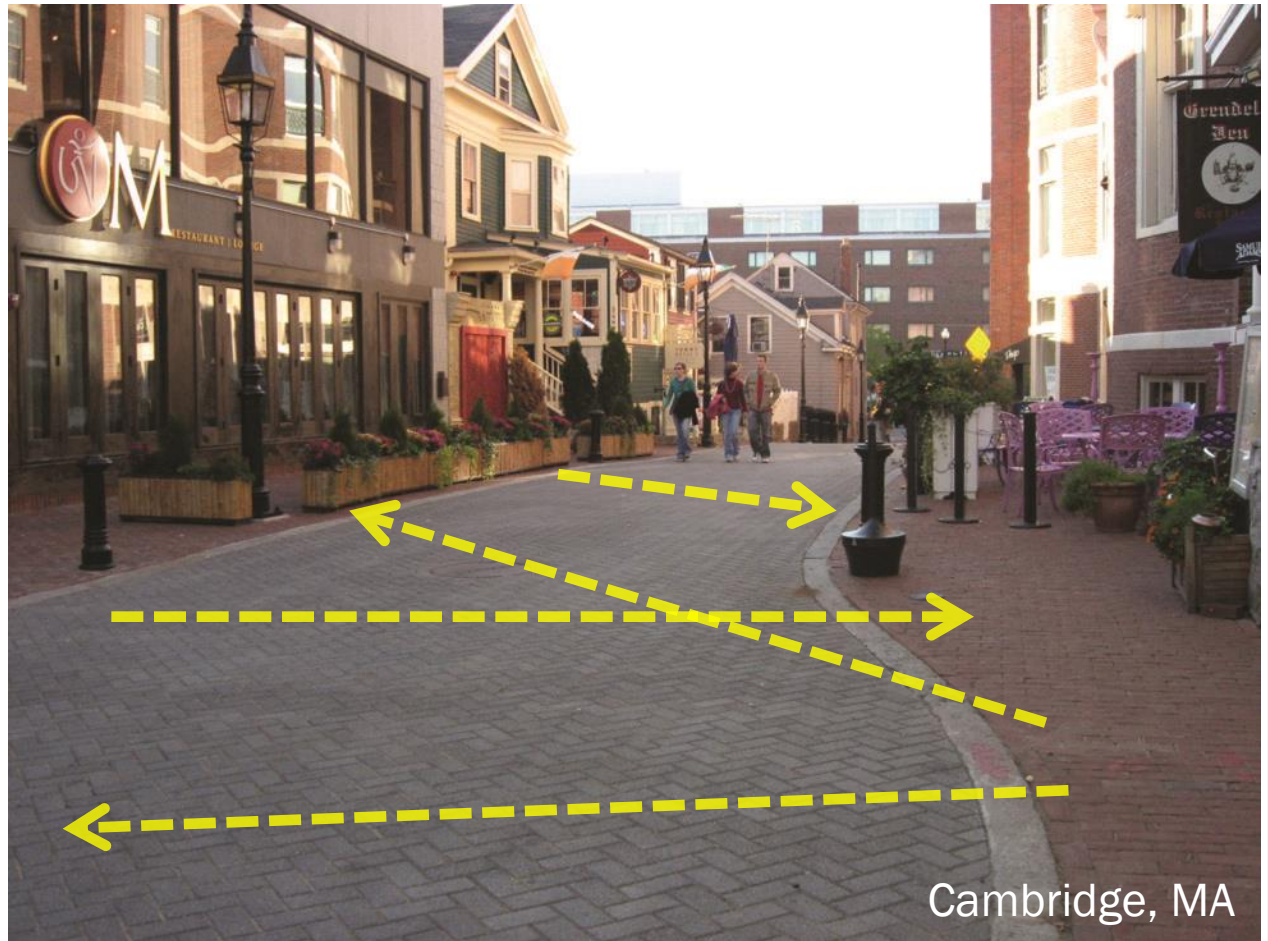
-National Association of City Transportation Officials (NACTO)



What goes into a Shared Street design?

Design Cues indicate that the space is open to vehicles but **pedestrians are the priority** users of the space:

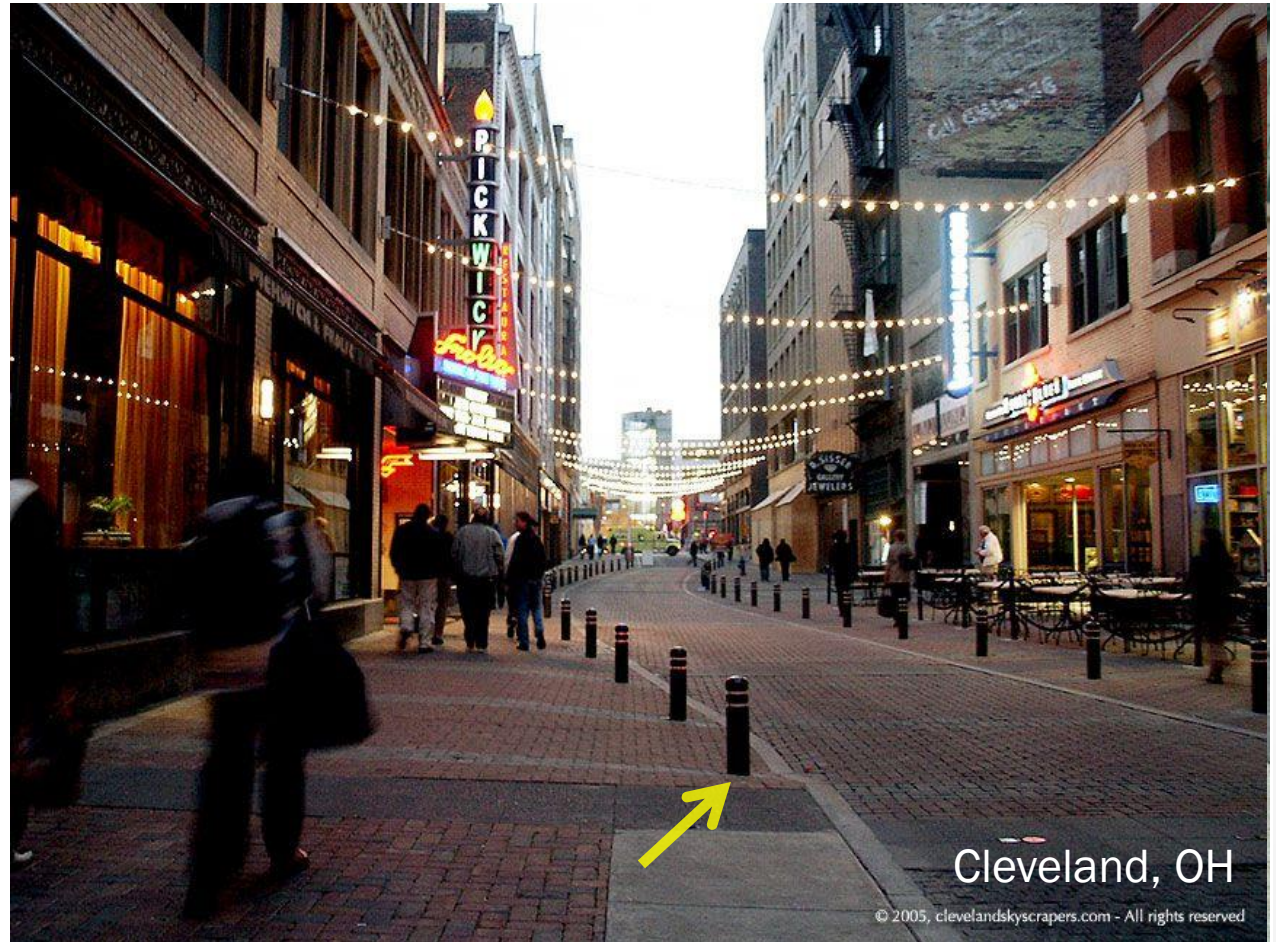
- 1) Continuous & level surface
- 2) Bollards
- 3) Tactile reminders



What goes into a Shared Street design?

Design Cues indicate that the space is open to vehicles but **pedestrians are the priority** users of the space:

- 1) Continuous & level surface
- 2) Bollards
- 3) Tactile reminders



What goes into a Shared Street design?

Design Cues indicate that the space is open to vehicles but **pedestrians are the priority** users of the space:

- 1) Continuous & level surface
- 2) Bollards
- 3) Tactile reminders



What goes into a Shared Street design?

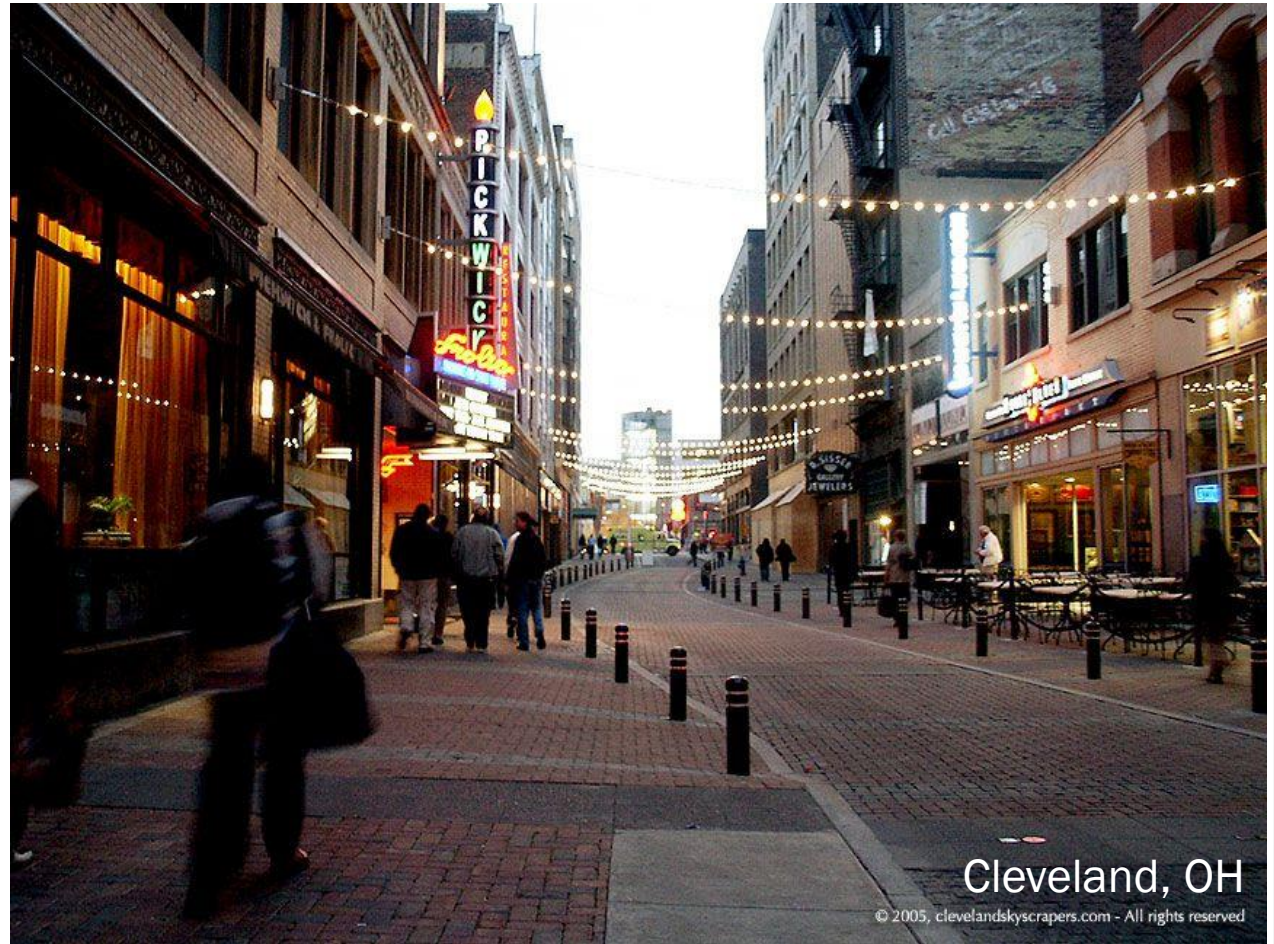
Shared Spaces are **flexible** – allowing for changes in the availability for user groups at **different times of day**



Cambridge, MA

What goes into a Shared Street design?

Shared Spaces are **flexible** – allowing for changes in the availability for user groups at **different times of day**

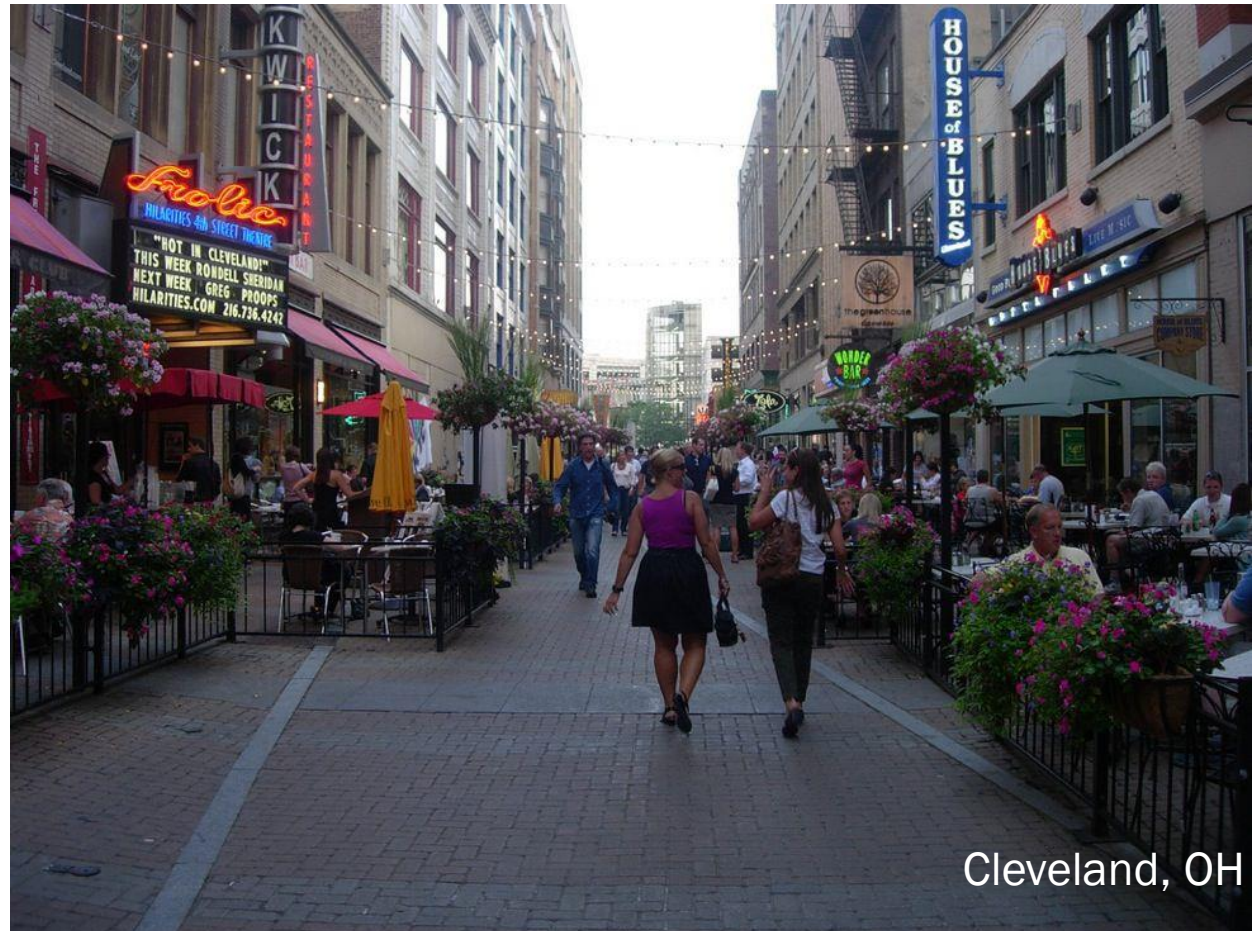


Cleveland, OH

© 2005, clevelandskyscrapers.com - All rights reserved

What goes into a Shared Street design?

Shared Spaces are **flexible** – allowing for changes in the availability for user groups at **different times of day**



What goes into a Shared Street design?

Shared Spaces are **slow spaces** – drivers are welcomed, but the design cues and the rules of the road require care.

PALMER ST Cambridge, MA

- Speed limit =10mph
- Tactile strip
- Textured pavement



What goes into a Shared Street design?

Shared Spaces are **slow spaces** – drivers are welcomed, but the design cues and the rules of the road require care.

PALMER ST Cambridge, MA

- Loading and unloading of passengers and packages is expected

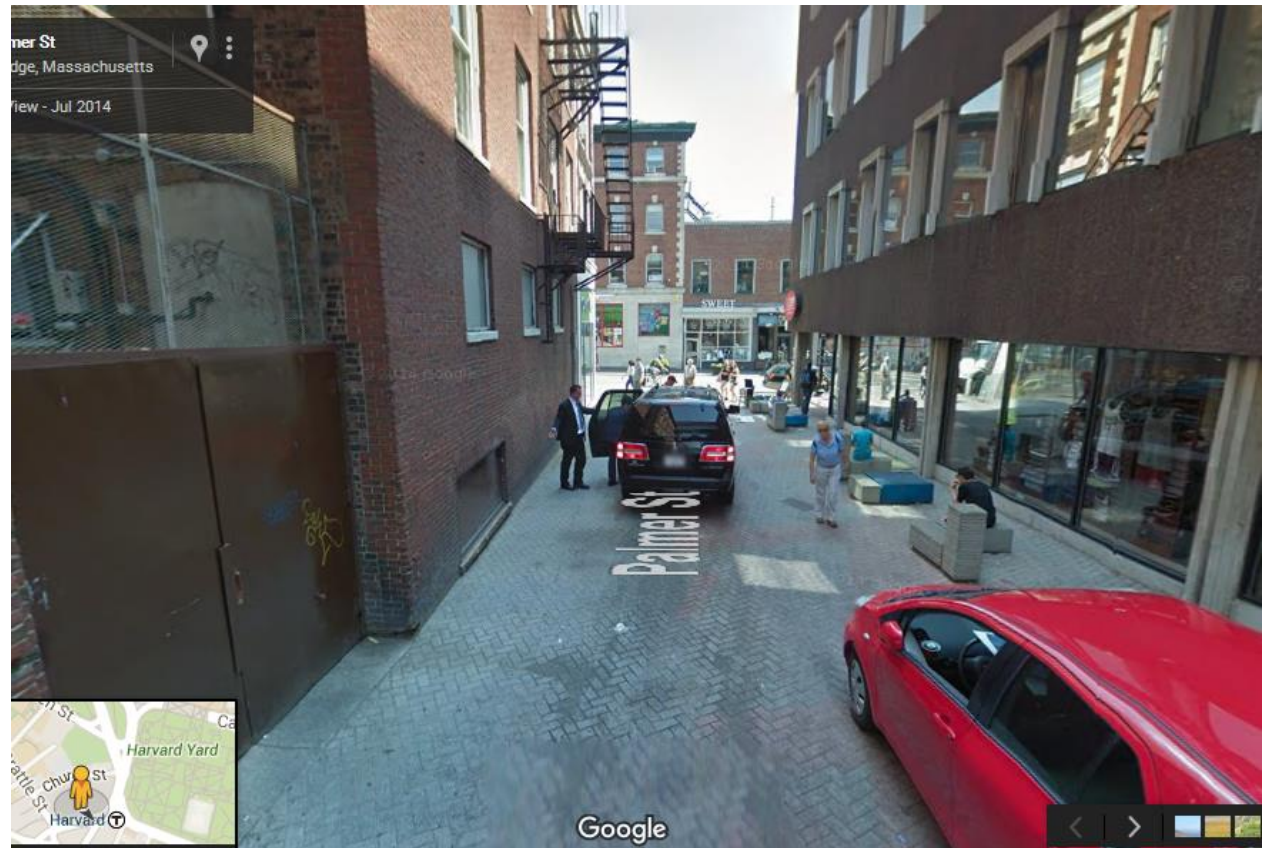


Image from Google Streetview

What goes into a Shared Street design?

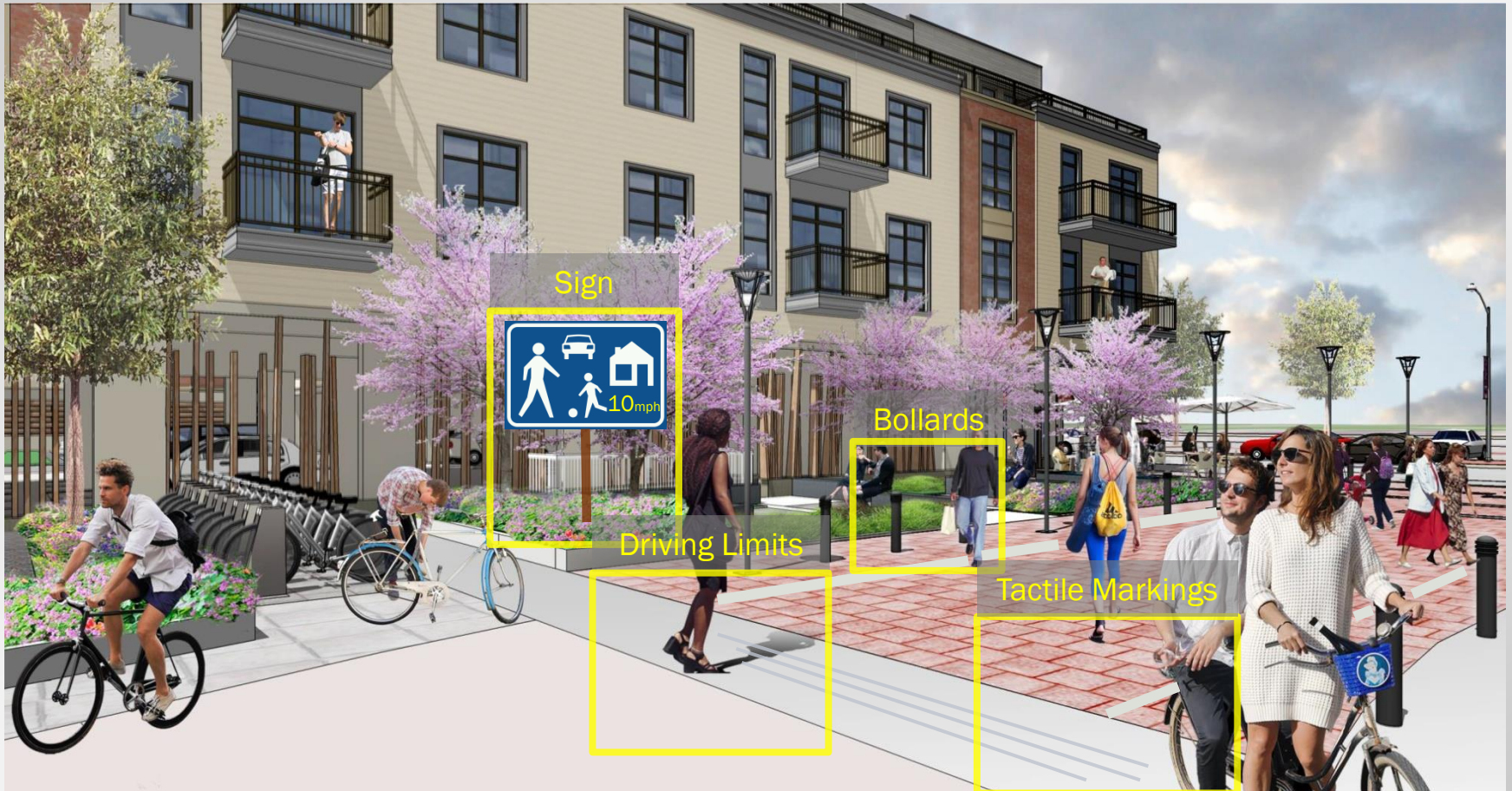
Shared Spaces are **slow spaces** – drivers are welcomed, but the design cues and the rules of the road require care.

PALMER ST Cambridge, MA

- Closing for an event is a frequent occurrence in good weather



Safety Cues to Drivers



Walnut Street Conceptual Plans

City of Newton

11.10.2015

Walnut Street Corridor Concept

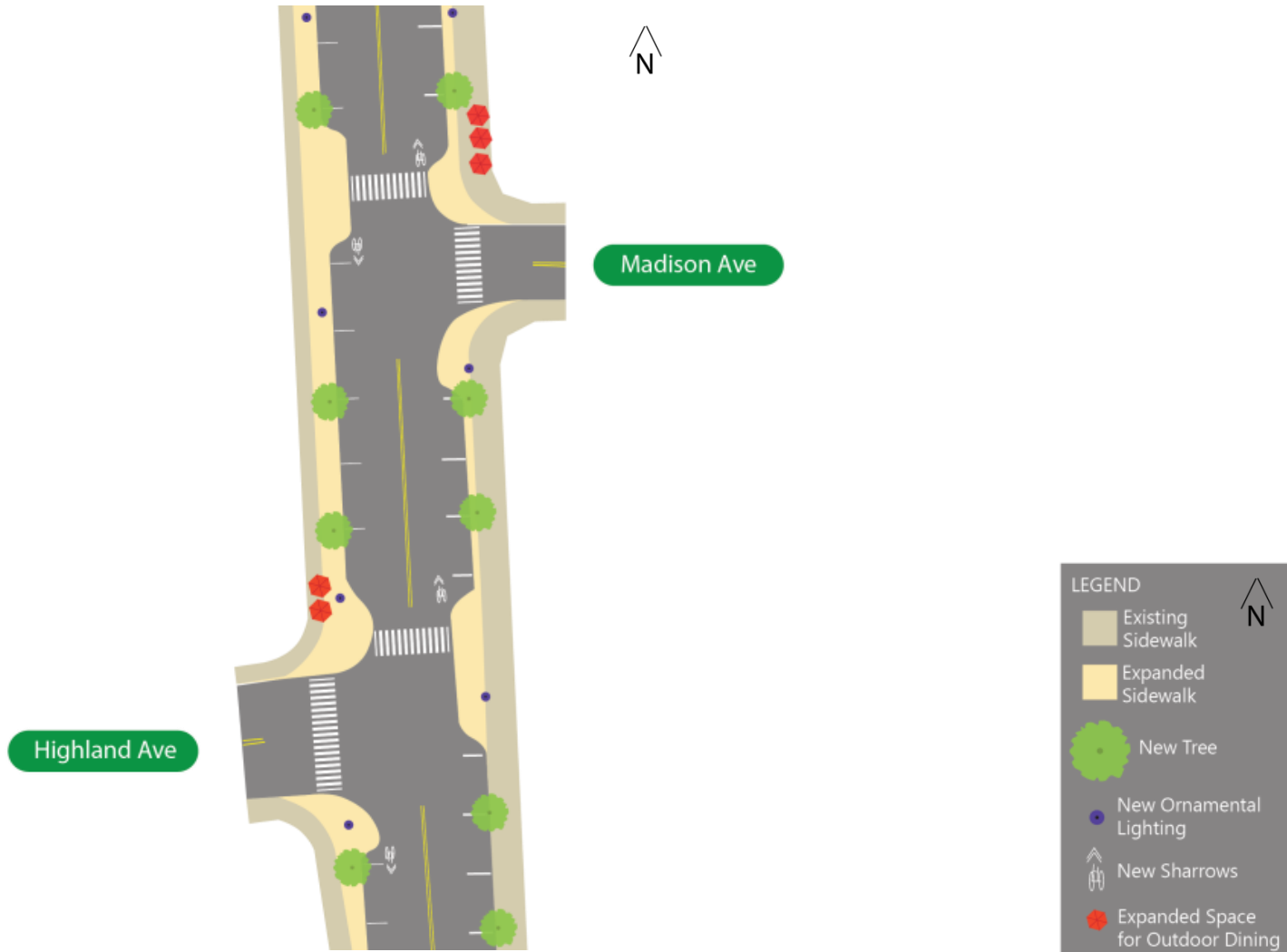


LEGEND

- Existing Sidewalk
- Expanded Sidewalk
- New Tree
- New Ornamental Lighting
- New Sharrows
- Expanded Space for Outdoor Dining

N

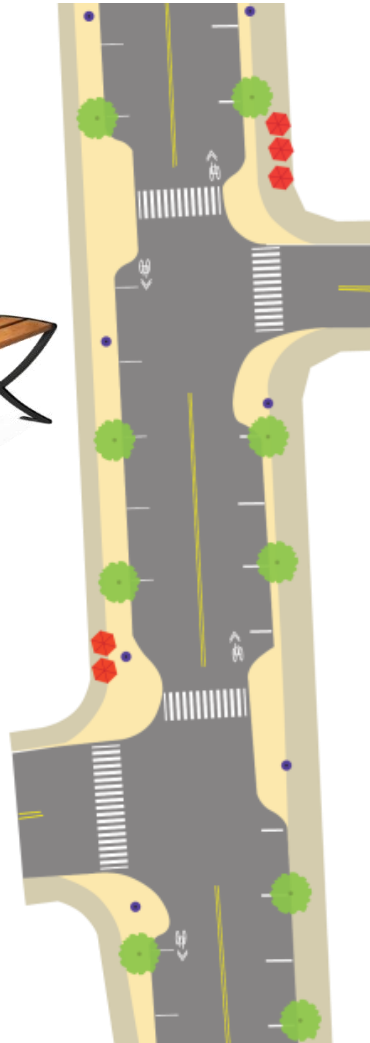
Walnut Street Corridor Concept



Walnut Street Corridor Concept



Highland Ave



Madison Ave



LEGEND

- Existing Sidewalk
- Expanded Sidewalk
- New Tree
- New Ornamental Lighting
- New Sharrows
- Expanded Space for Outdoor Dining

Walnut Street Corridor Concept



Walnut Street Corridor Concept



Walnut Street Corridor Concept



- Expanded Sidewalk w/ distinct zones
- LED Lighting on Ornamental Lamps with option of Hanging Planters or Banners
- New Trash Cans and Benches
- Planter Boxes

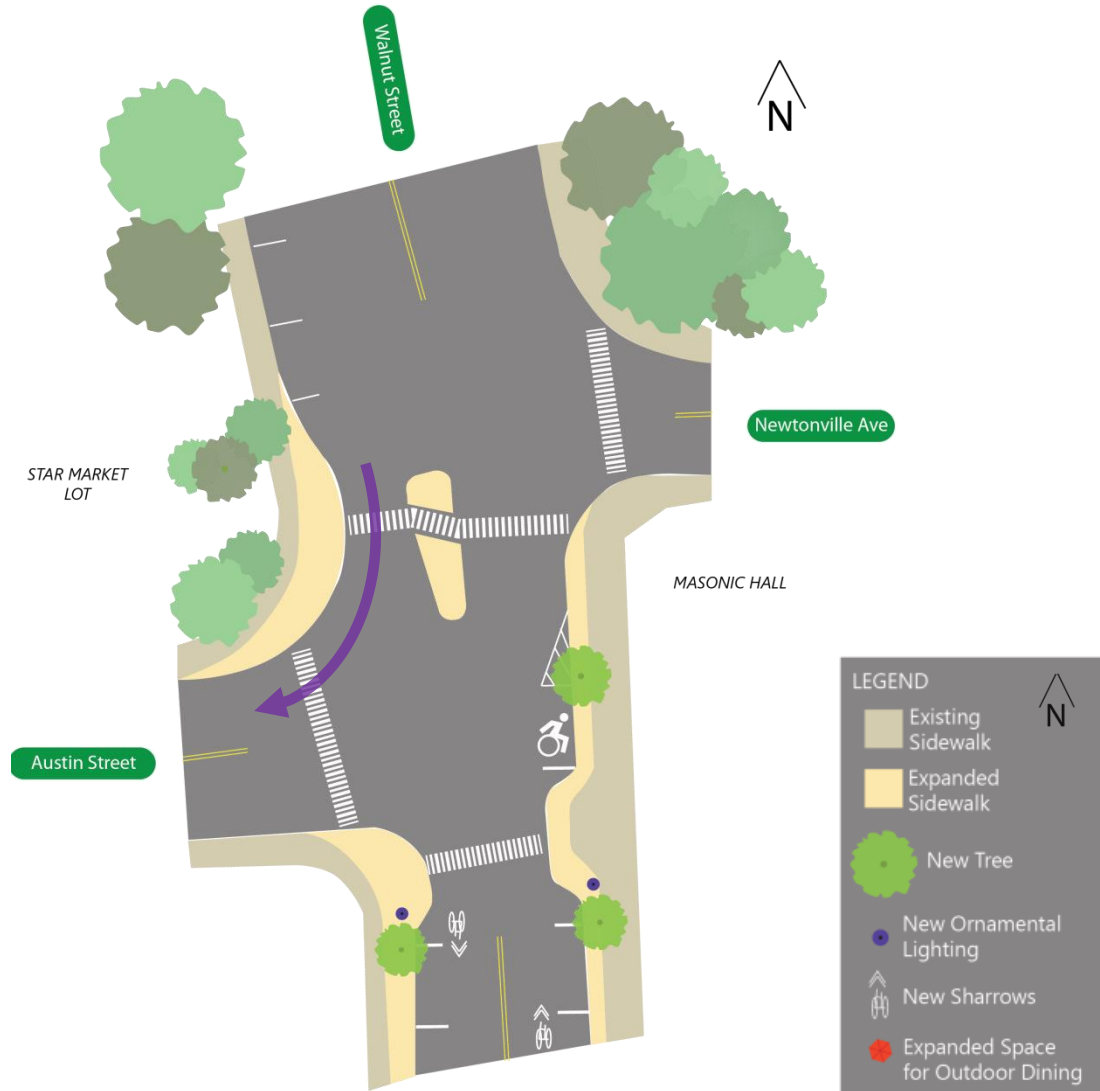
Walnut St/Austin St Intersection Concept



Bike Racks w/ similar form to benches



Angled Walkway across island places cars in pedestrian's line of sight



Walnut St/Austin St Intersection Concept



Wayfinding to local businesses and to the Austin Street Lot