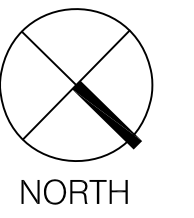


32 BALDPATE
HILL ROAD
Newton,
Massachusetts

GENERAL NOTES:



GREGORY LOMبارDI DESIGN, INC.
Landscape Architecture
2235 Massachusetts Avenue
Cambridge, Massachusetts 02140
Phone 617.492.2808 Fax 617.492.2904

No.	Date	Comment

Date:	11/28/2018	Scale:	1/16" = 1'-0"	0	16'
Project No.:	18004	Drawing by:	AH/PC/JS	Checked by:	TS/GL

TREE REMOVAL PLAN

L0.01

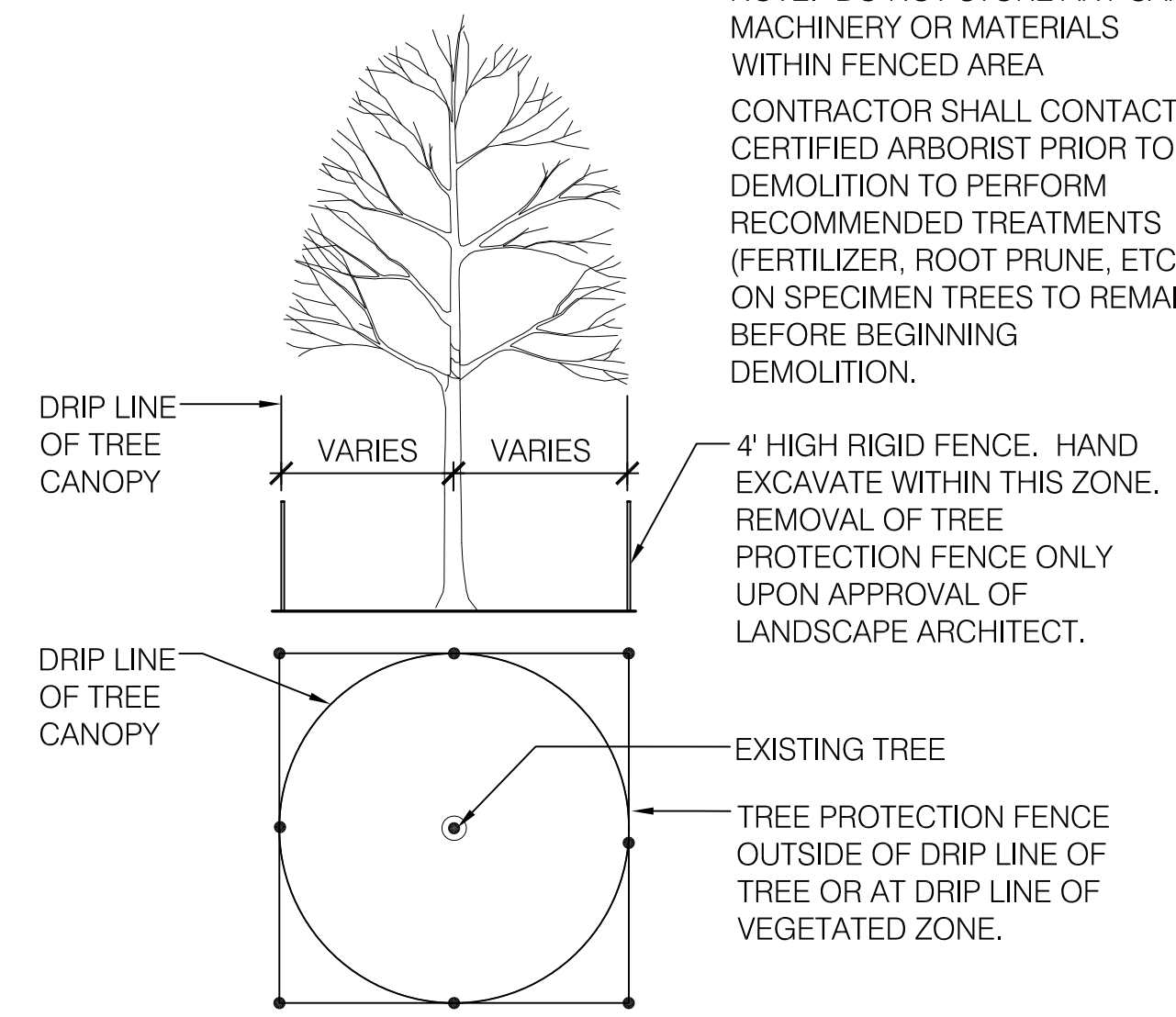
LEGEND

- PROPERTY LINE
- LIMIT OF HEAVY CONSTRUCTION
- TREE PROTECTION FENCE
- EXISTING DECIDUOUS TREE TO REMAIN
- EXISTING EVERGREEN TREE TO REMAIN
- ⊗ EXISTING PROTECTED DECIDUOUS TREE TO BE REMOVED
- ⊗ EXISTING PROTECTED EVERGREEN TREE TO BE REMOVED

OVERALL TREE REMOVALS

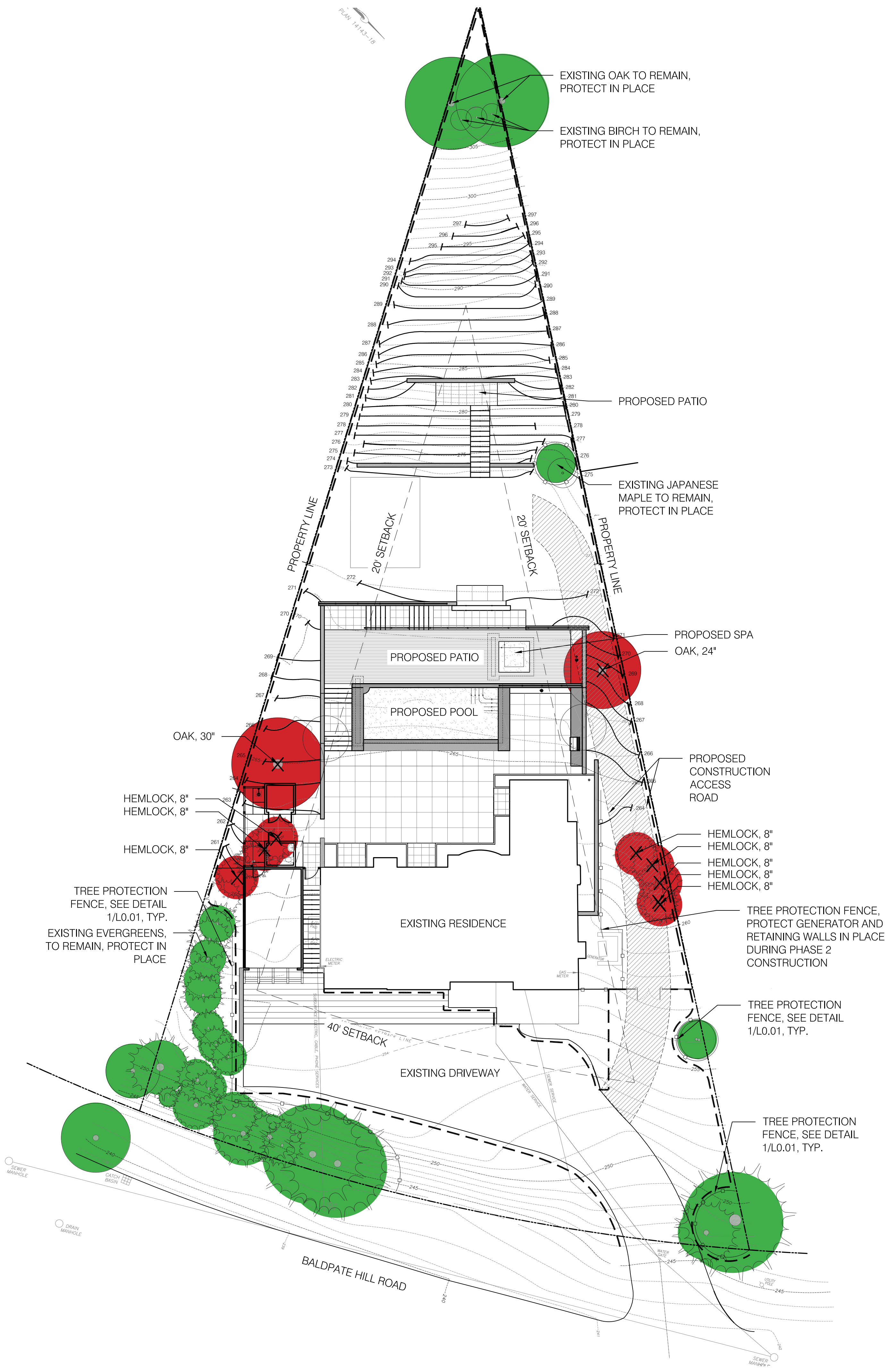
CALIPER	COMMON NAME
24"	OAK
8"	HEMLOCK
8"	HEMLOCK
8"	HEMLOCK
8"	HEMLOCK
8"	HEMLOCK
8"	HEMLOCK
30"	OAK
8"	HEMLOCK
8"	HEMLOCK
8"	HEMLOCK
118"	TOTAL

NOTE: DO NOT STORE ANY CARS, MACHINERY OR MATERIALS WITHIN FENCED AREA
CONTRACTOR SHALL CONTACT CERTIFIED ARBORIST PRIOR TO DEMOLITION TO PERFORM RECOMMENDED TREATMENTS (FERTILIZER, ROOT PRUNE, ETC.) ON SPECIMEN TREES TO REMAIN BEFORE BEGINNING DEMOLITION.



1 TREE PROTECTION FENCING
SCALE: NTS

PLAN/SECTION



©Gregory Lombardi Design Incorporated