



1



2



3



4



5



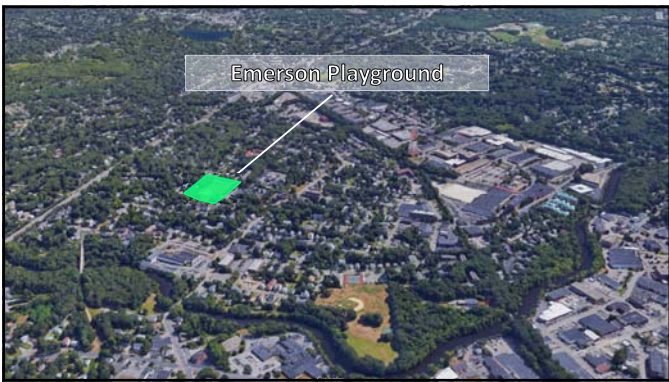
6



7



8



Emerson Playground

9



Hemlock Gorge Reservation

10



Braceland Upper Falls Playground

11

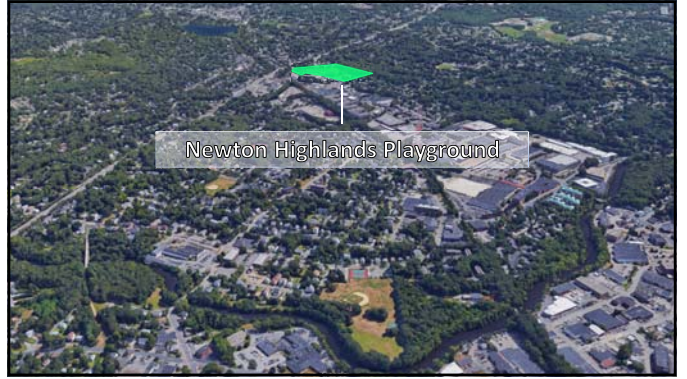


Charles River Pathway

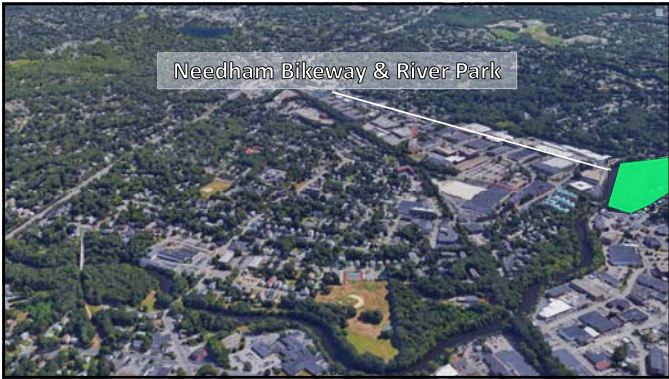
12



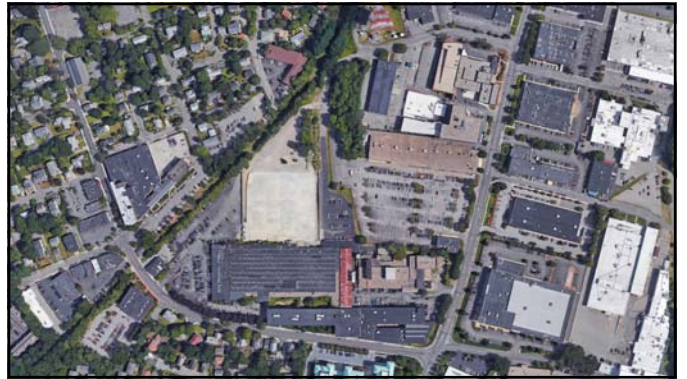
13



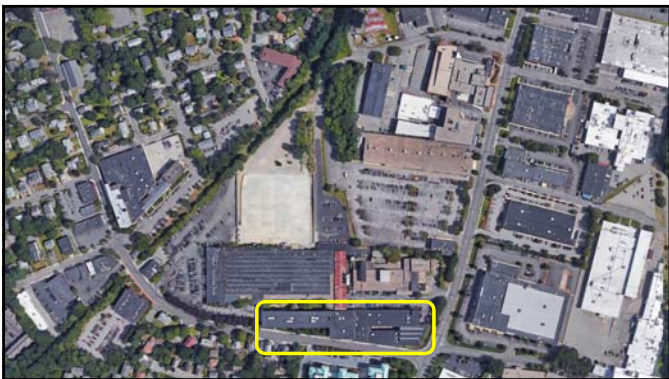
14



15



16



17



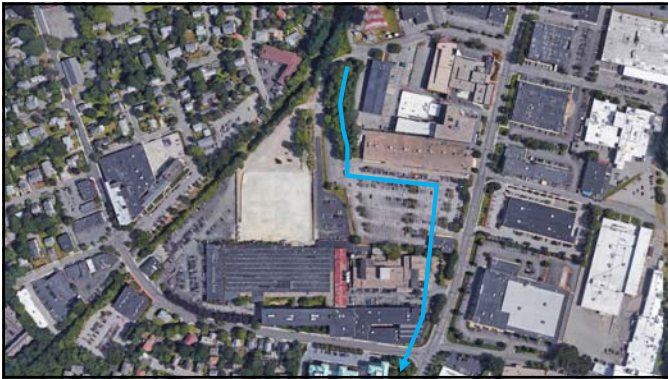
18



19



20



21



22



23



24



25



26



27



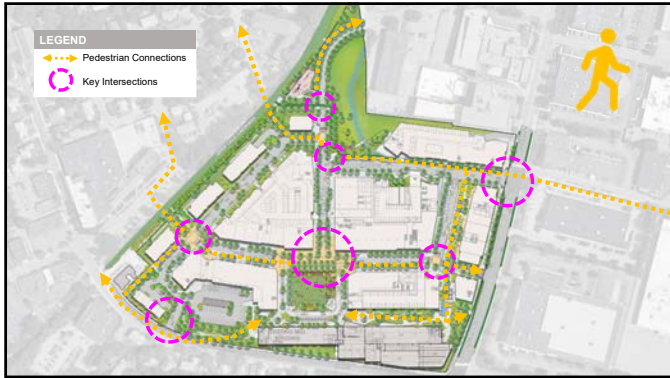
28



29



30



31



32



33



34



35



36

Brian P. O'Connor, AIA
Partner
Cube3

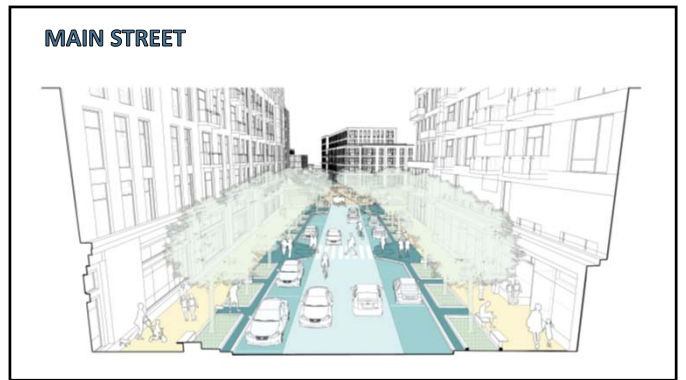
37



38



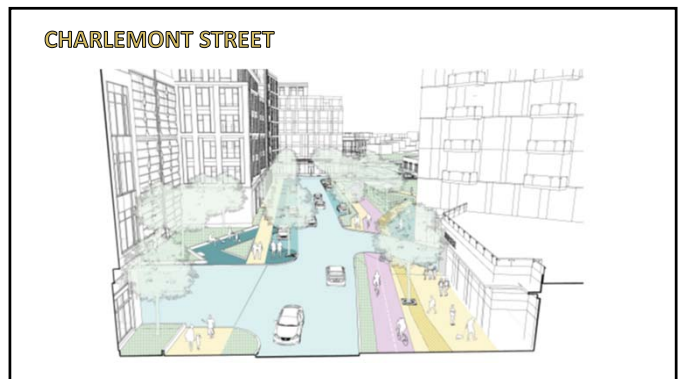
39



40



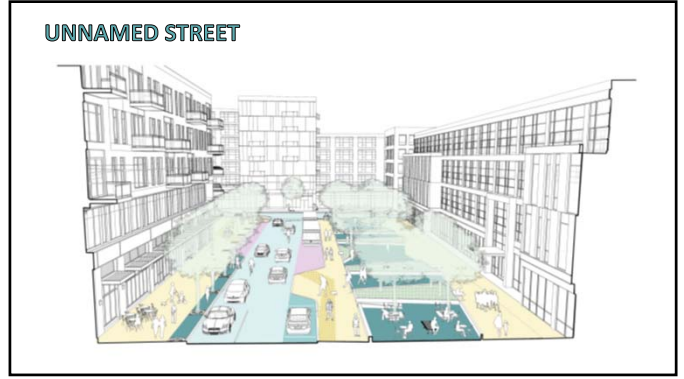
41



42



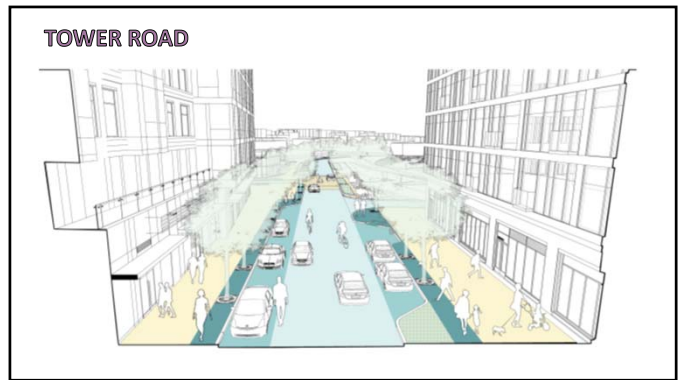
43



44



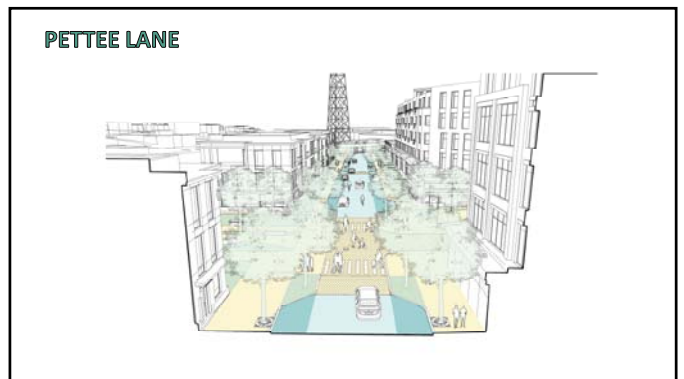
45



46



47



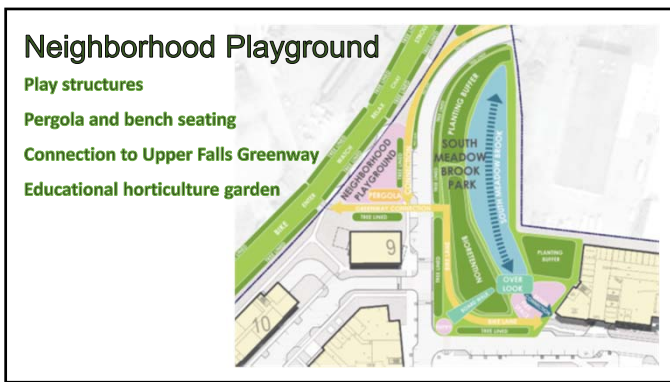
48



49



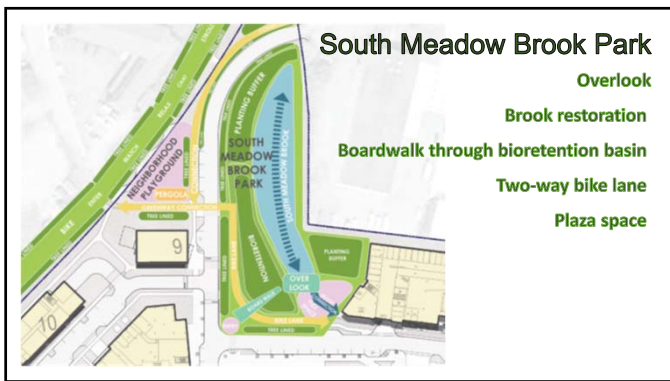
50



51



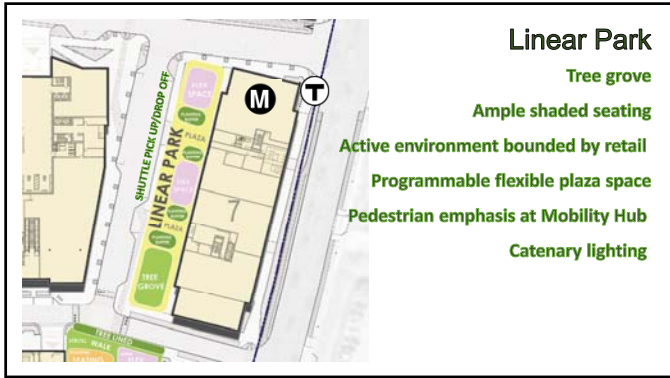
52



53



54



Linear Park

- Tree grove
- Ample shaded seating
- Active environment bounded by retail
- Programmable flexible plaza space
- Pedestrian emphasis at Mobility Hub
- Catenary lighting

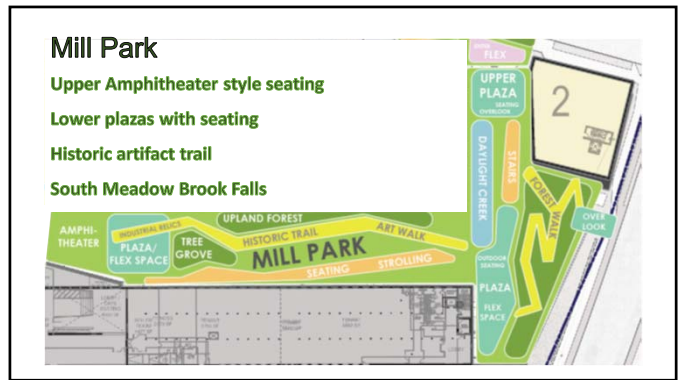
55



56



57



Mill Park

- Upper Amphitheater style seating
- Lower plazas with seating
- Historic artifact trail
- South Meadow Brook Falls

58



59



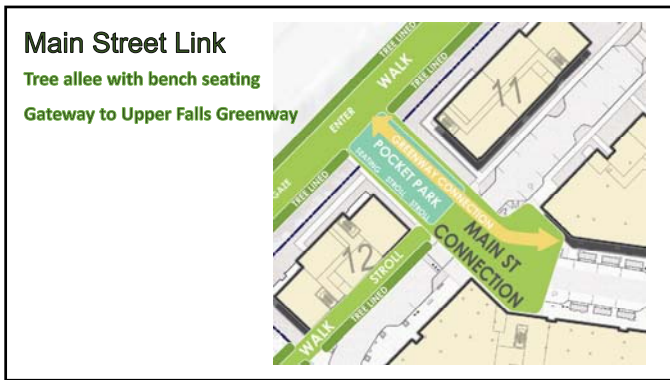
60



61



62



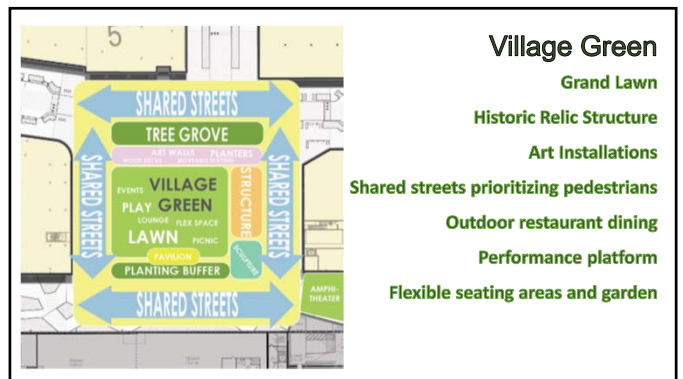
63



64



65



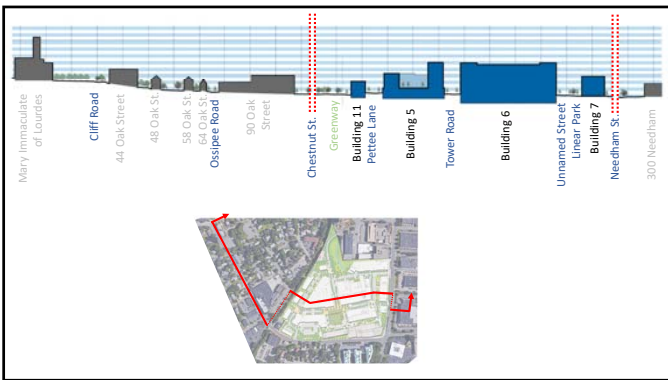
66



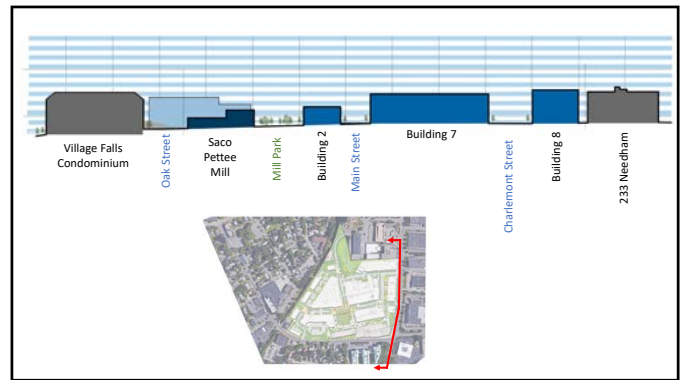
67



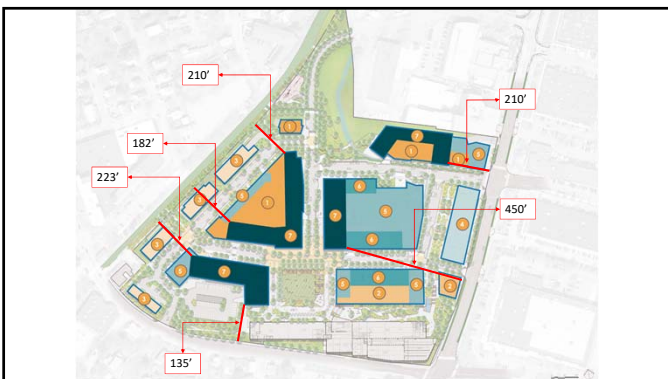
68



69



70



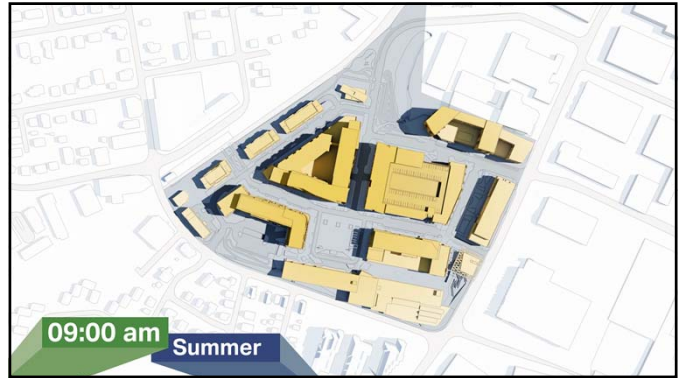
71



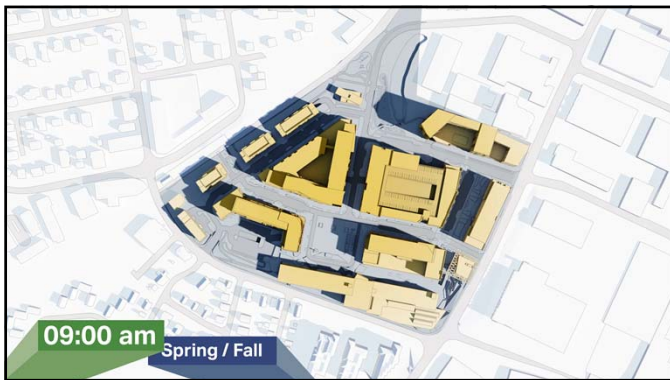
72



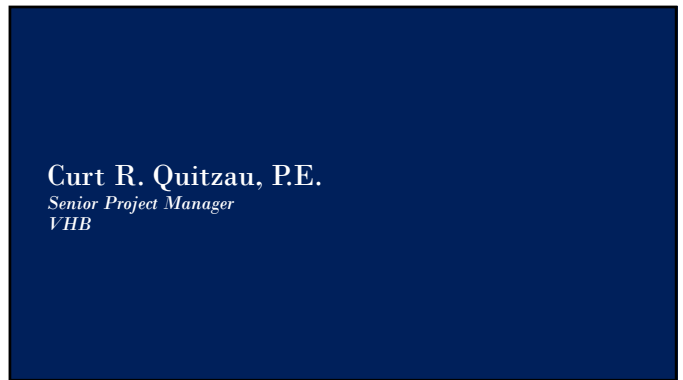
73



74



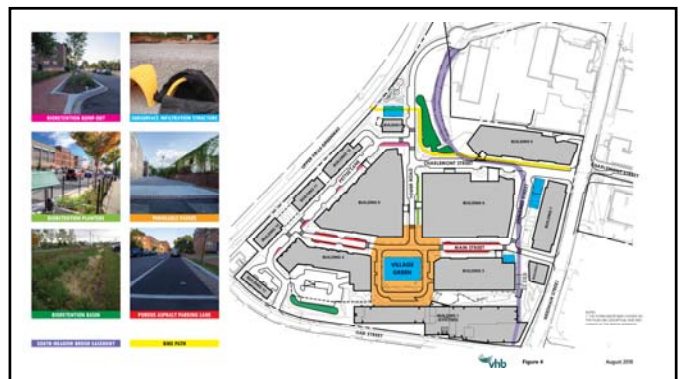
75



76



77



78



79



80



81