
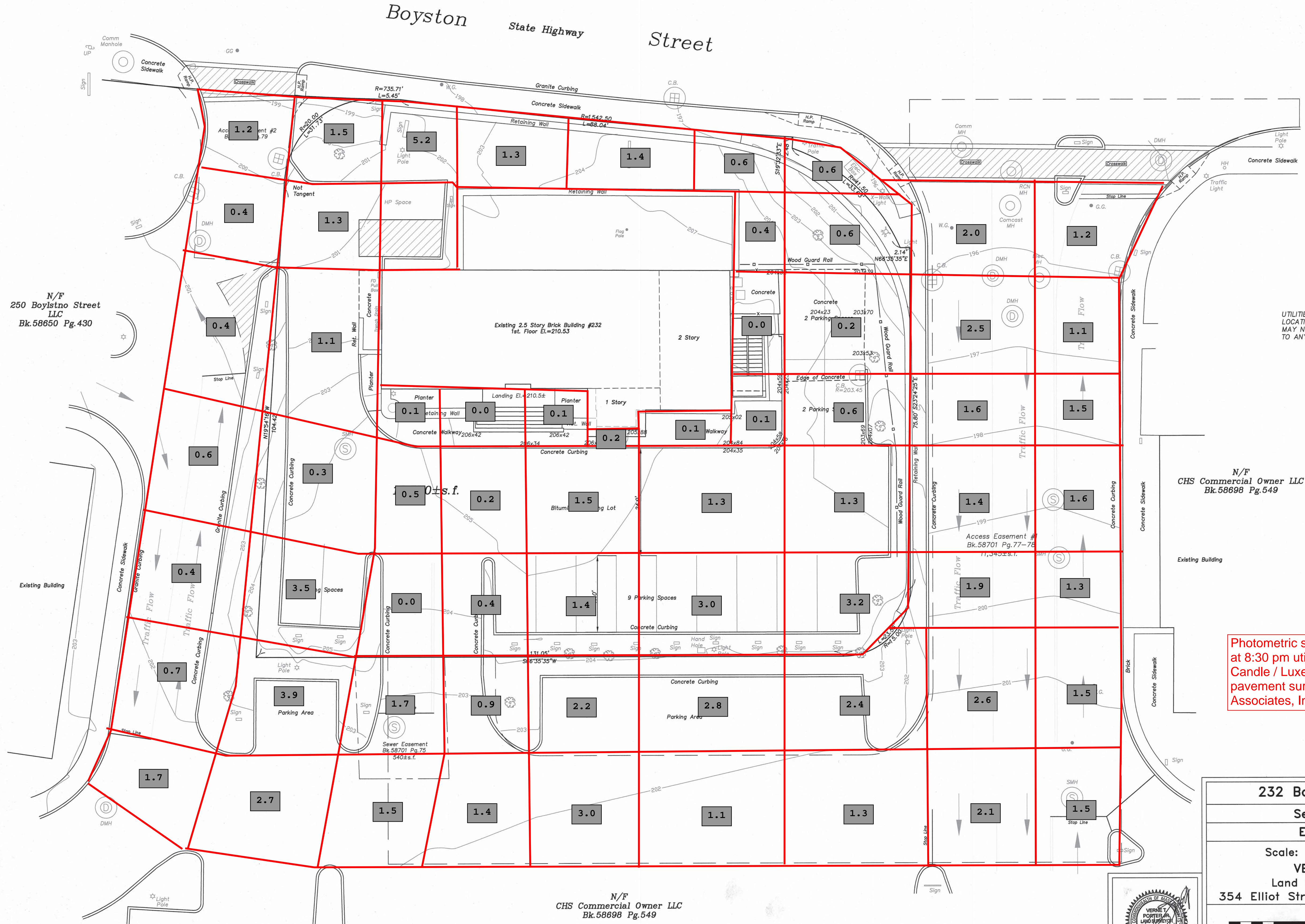


Dig Safe
Excavators
 Before you dig contact the Dig Safe Center. To prevent damage to telephone, gas or electric underground facilities of member utilities, call toll free 1-800-485-5844. Massachusetts state law requires notification at least three business days before you start digging operations. In an emergency, call immediately.



N/F
 250 Boylston Street
 LLC
 Bk.58650 Pg.430



UTILITIES SHOWN WERE TAKEN FROM ACTUAL ON THE GROUND LOCATIONS AND BEST AVAILABLE INFORMATION AND MAY OR MAY NOT BE COMPLETE OR CORRECT. VERIFY IN FIELD PRIOR TO ANY EXCAVATION.

N/F
 CHS Commercial Owner LLC
 Bk.58698 Pg.549

Photometric survey conducted on 11/4/2020 at 8:30 pm utilizing Extech Instruments Foot Candle / Luxe Meter at a height of 4' above pavement surface by Kimley-Horn and Associates, Inc.

N/F
 CHS Commercial Owner LLC
 Bk.58698 Pg.549

232 Boylston Street, Newton, MA
Section 83 Block 2 Lot 9
Existing Conditions Plan
 Scale: 1"=10' June 14, 2019
VERNE T. PORTER Jr., PLS
 Land Surveyors - Civil Engineers
 354 Elliot Street Newton, Massachusetts 02464



Project: 19012
 Checked By: V. Porter Jr.
 Drawn By:

