

- LEGEND:**
- N/F NOW OR FORMERLY UNDERGROUND WIRES
  - TREE
  - TREE LINE
  - UP UTILITY POLE
  - GG• GAS GATE
  - G GAS SERVICE (BURIED)
  - WG• WATER GATE
  - W WATER SERVICE (BURIED)
  - DMH DRAIN MANHOLE
  - D SUB-SURFACE DRAIN LINE
  - EXISTING CONTOUR
  - - - EXISTING CONTOUR
  - ☆ LIGHTPOLE
  - 99X9 SPOT ELEVATION
  - ○ ○ ○ STONE WALL
  - ===== EDGE OF PAVEMENT

TBM  
TOP HYDRANT  
ELEV.=163.35

TBM  
TOP HYDRANT  
ELEV.=160.72

EXISTING DMH  
RIM EL=159.40±

EXISTING DMH  
RIM EL=158.25±

EXISTING CATCH  
BASIN (TYP.)

EXISTING GAS MAIN

**SITE PLAN**  
**499 WINCHESTER STREET**  
 IN  
**NEWTON, MASSACHUSETTS**  
 (MIDDLESEX COUNTY)

PRE-DEVELOPMENT DRAINAGE MAP  
 FOR: CAROLINA PROPERTIES, LLC  
 SCALE: 1"=20' FEBRUARY 25, 2019

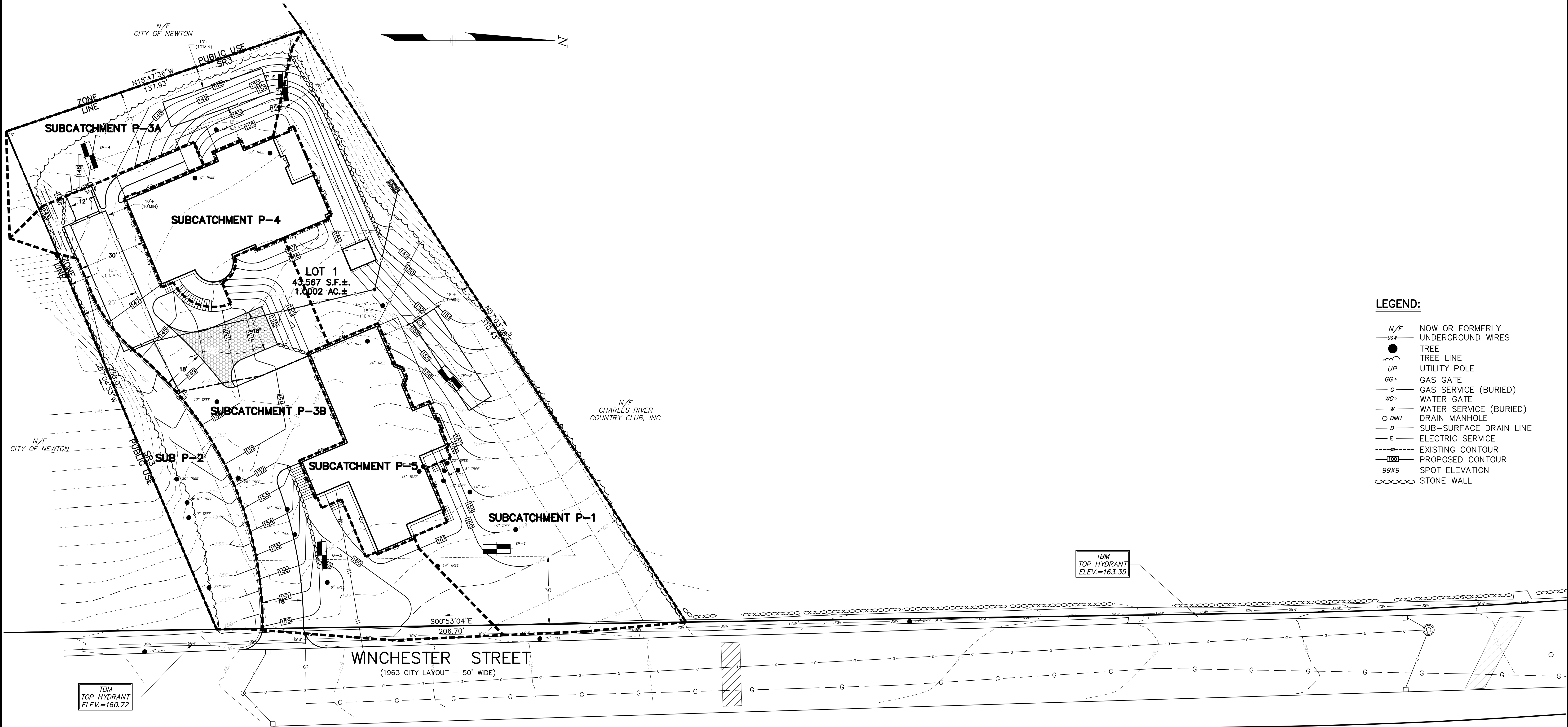
**STAMSKI AND McNARY, INC.**  
 1000 MAIN STREET ACTON, MASSACHUSETTS  
 ENGINEERING - PLANNING - SURVEYING

0 10 20 40 60 80 FT

(6139.SITE.F.dwg) SM-6139

**PLAN VIEW:**

SINGLE RESIDENCE 3 (SR3)  
SCALE: 1"=20'



- LEGEND:**
- N/F NOW OR FORMERLY UNDERGROUND WIRES
  - TREE
  - TREE LINE
  - UP UTILITY POLE
  - GG• GAS GATE
  - G GAS SERVICE (BURIED)
  - WG• WATER GATE
  - W WATER SERVICE (BURIED)
  - DMH DRAIN MANHOLE
  - D SUB-SURFACE DRAIN LINE
  - E ELECTRIC SERVICE
  - EXISTING CONTOUR
  - PROPOSED CONTOUR
  - 99X9 SPOT ELEVATION
  - STONE WALL

SITE PLAN  
499 WINCHESTER STREET  
IN  
NEWTON, MASSACHUSETTS  
(MIDDLESEX COUNTY)

POST-DEVELOPMENT DRAINAGE MAP  
FOR: CAROLINA PROPERTIES, LLC  
SCALE: 1"=20' FEBRUARY 25, 2019

STAMSKI AND MCNARY, INC.  
1000 MAIN STREET ACTON, MASSACHUSETTS  
ENGINEERING - PLANNING - SURVEYING

0 10 20 40 60 80 FT