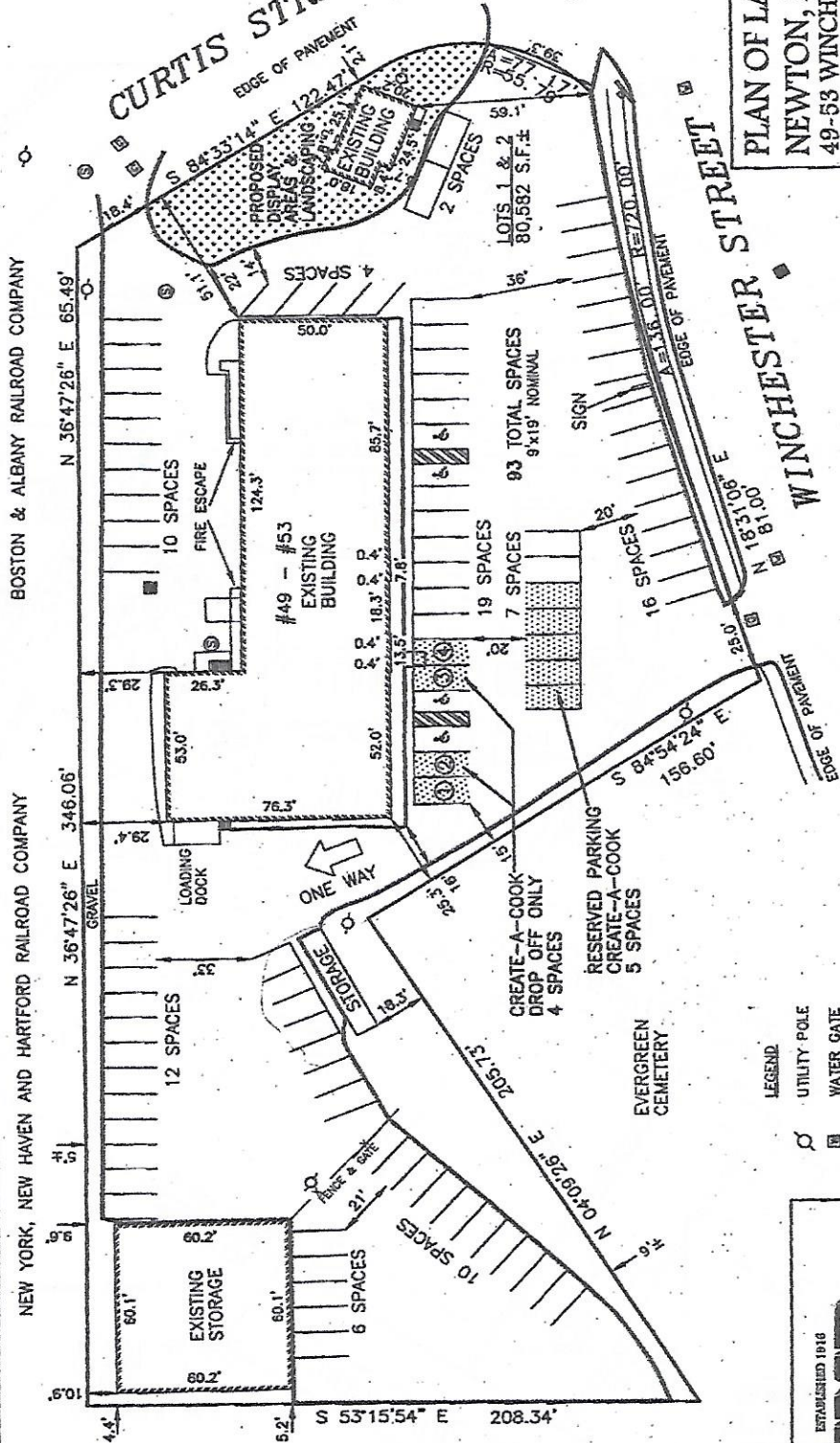


RECEIVED  
Newton City Clerk

2014 APR 15 PM 4:25

David A. Olson, CMAS  
Surveyor, MA 02459

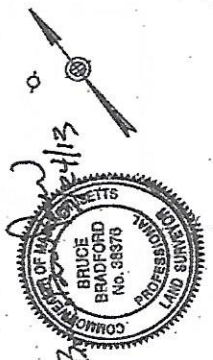


**PLAN OF LAND IN  
NEWTON, MA  
49-53 WINCHESTER STREET**  
PROPOSED ALTERATIONS  
TO ACCOMPANY THE PETITION OF  
STONE GALLERY  
35 CONSTOCK DRIVE  
WRENTHAM, MA  
SCALE: 1 IN. = 40 FT.  
DATE: JULY 13, 2005  
REVISED: SEPTEMBER 24, 2013  
DRAWN: ER/ES | CHECK: BB  
PROJECT NO. 24163

BOSTON & ALBANY RAILROAD COMPANY

NEW YORK, NEW HAVEN AND HARTFORD RAILROAD COMPANY

SECTION 51 BLOCK 28 LOTS 1 & 2  
ZONING DISTRICT: MU-1  
DEED REFERENCE: BK 1246 PG 80  
LOT COVERAGE 18.1%  
OPEN SPACE 19% ±  
STRUCTURES 14,609 S.F.  
DRIVE 50,553 S.F. ±



- LEGEND**
- UTILITY POLE
  - WATER GATE
  - GAS GATE
  - ELECTRIC MANHOLE
  - SEWER MANHOLE
  - DRAIN MANHOLE
  - TELEPHONE MANHOLE
  - CATCH BASIN
  - SIGN

ESTABLISHED 1916  
**EMTB**  
**EVERETT M. BROOKS CO.**  
SURVEYORS & ENGINEERS  
49 LEXINGTON STREET  
WEST NEWTON, MA 02465  
(617) 527-8750  
(617) 332-1578 FAX  
info@everettbrooks.com