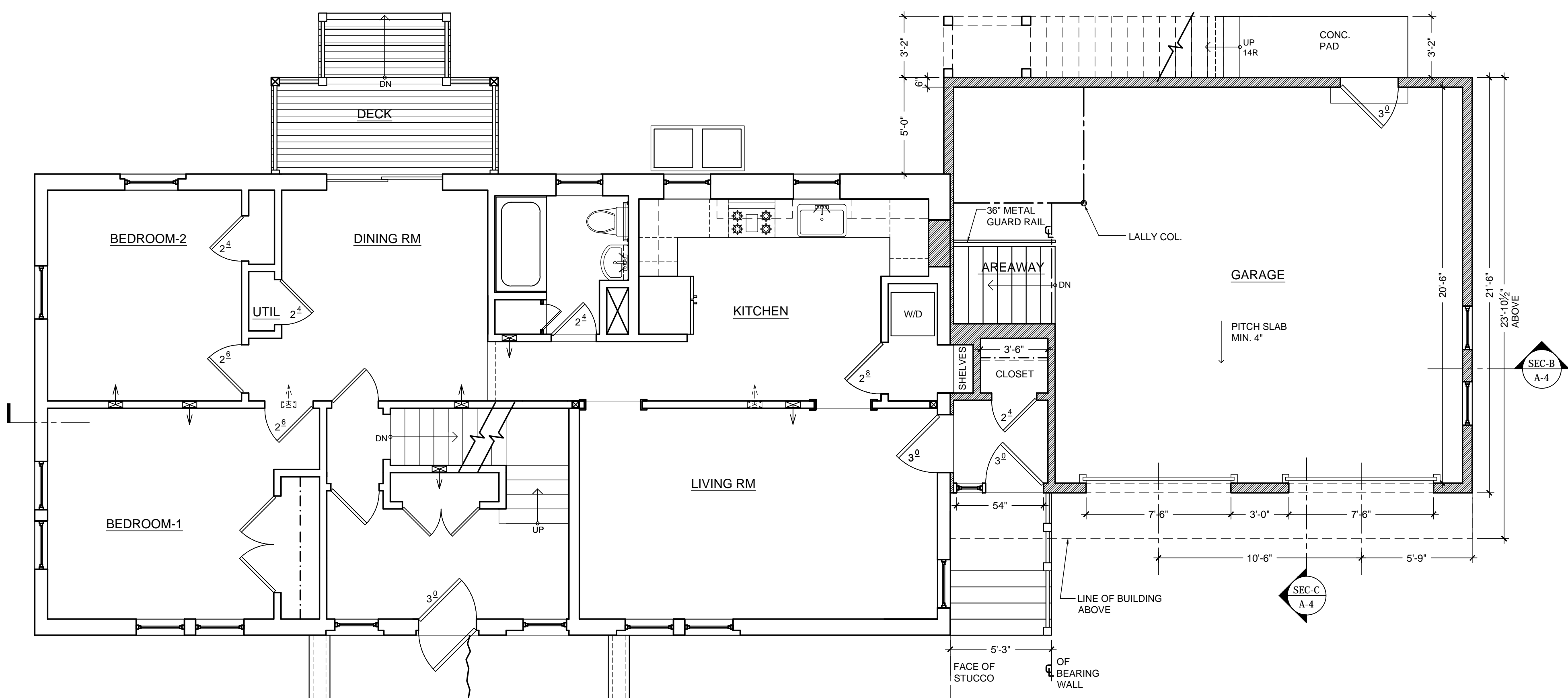
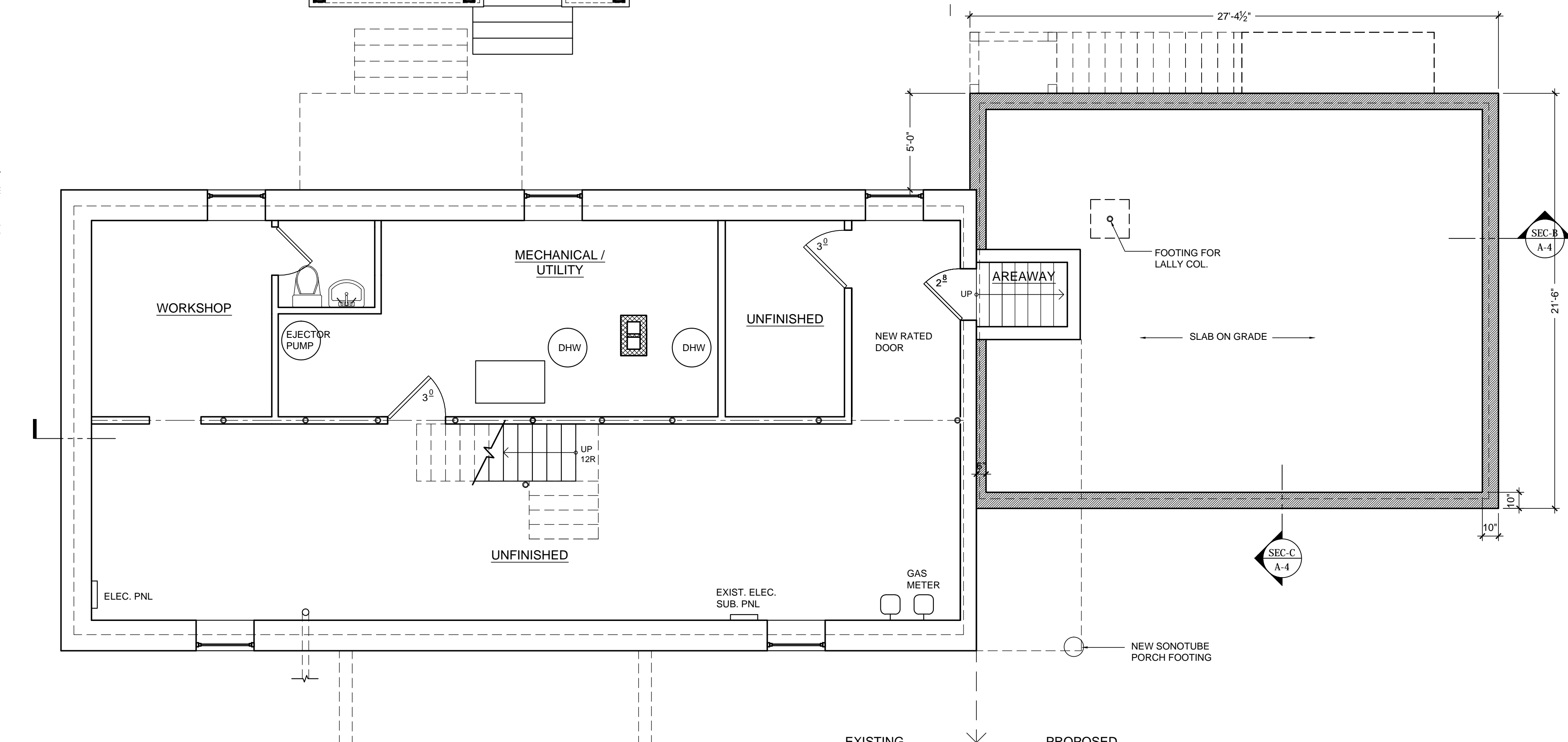


0 PROPOSED SITE PLAN (PHASE 2)  
Scale: 1"=10'-0"



2 PROPOSED 1ST FLOOR PLAN (PHASE 2)  
Scale: 1/4"=1'-0"



1 PROPOSED BASEMENT PLAN (PHASE 2)  
Scale: 1/4"=1'-0"

CONSULTING STRUCTURAL ENGINEER:  
**SOUZA, TRUE AND PARTNERS, INC.**  
653 MOUNT AUBURN STREET  
WATERTOWN, MA 02472  
Ph: 617-926-6100, Fax: 617-924-4431

ARCHITECT:  
**PIERCE LAMB ARCHITECTS**  
1075 WASHINGTON STREET  
WEST NEWTON, MA 02465  
Ph: 617-964-1311, Fax: 617-630-9374

PROJECT:  
**126 WESTLAND AVE  
NEWTON, MA**

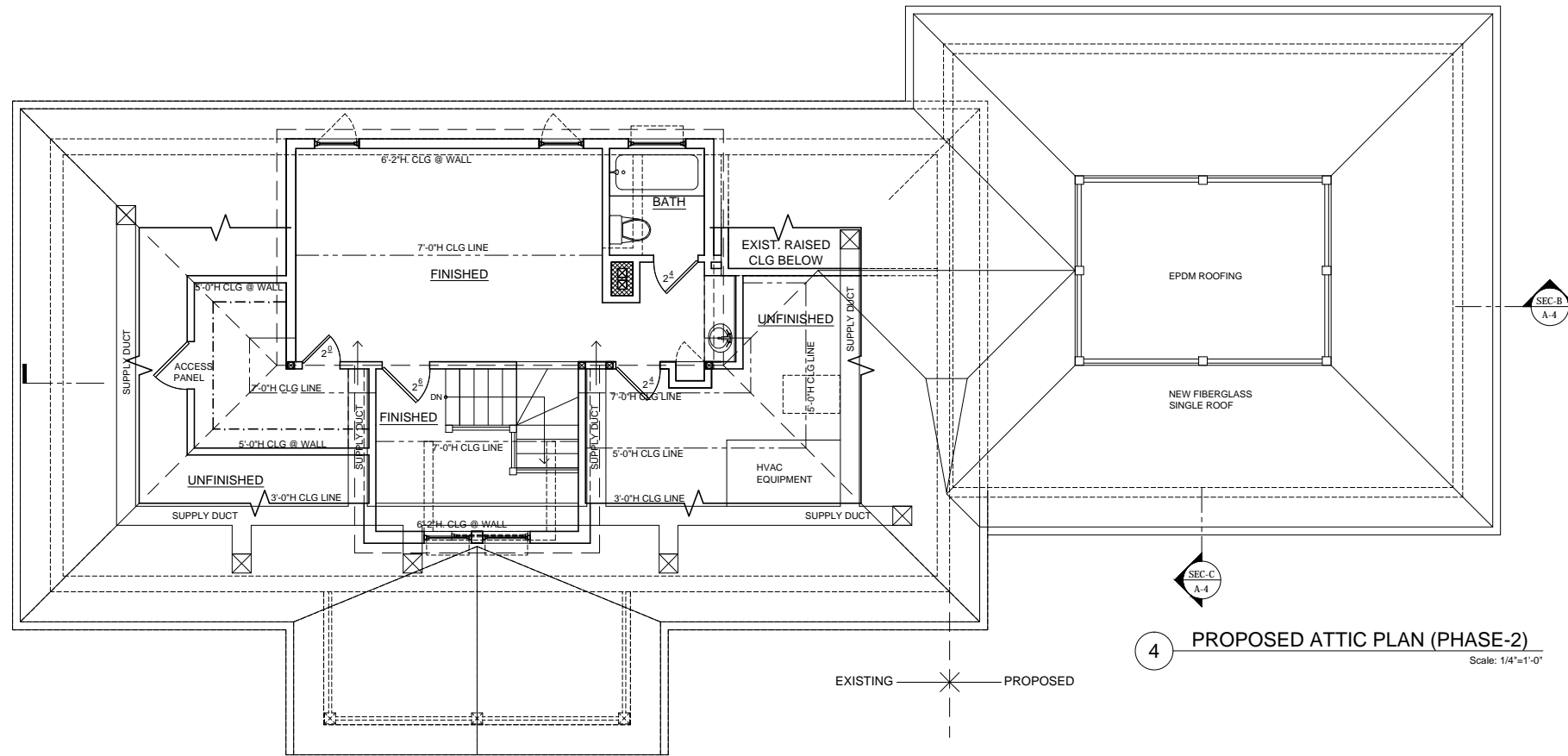
ISSUE:  
7/9/2014

PROFESSIONAL SEAL:

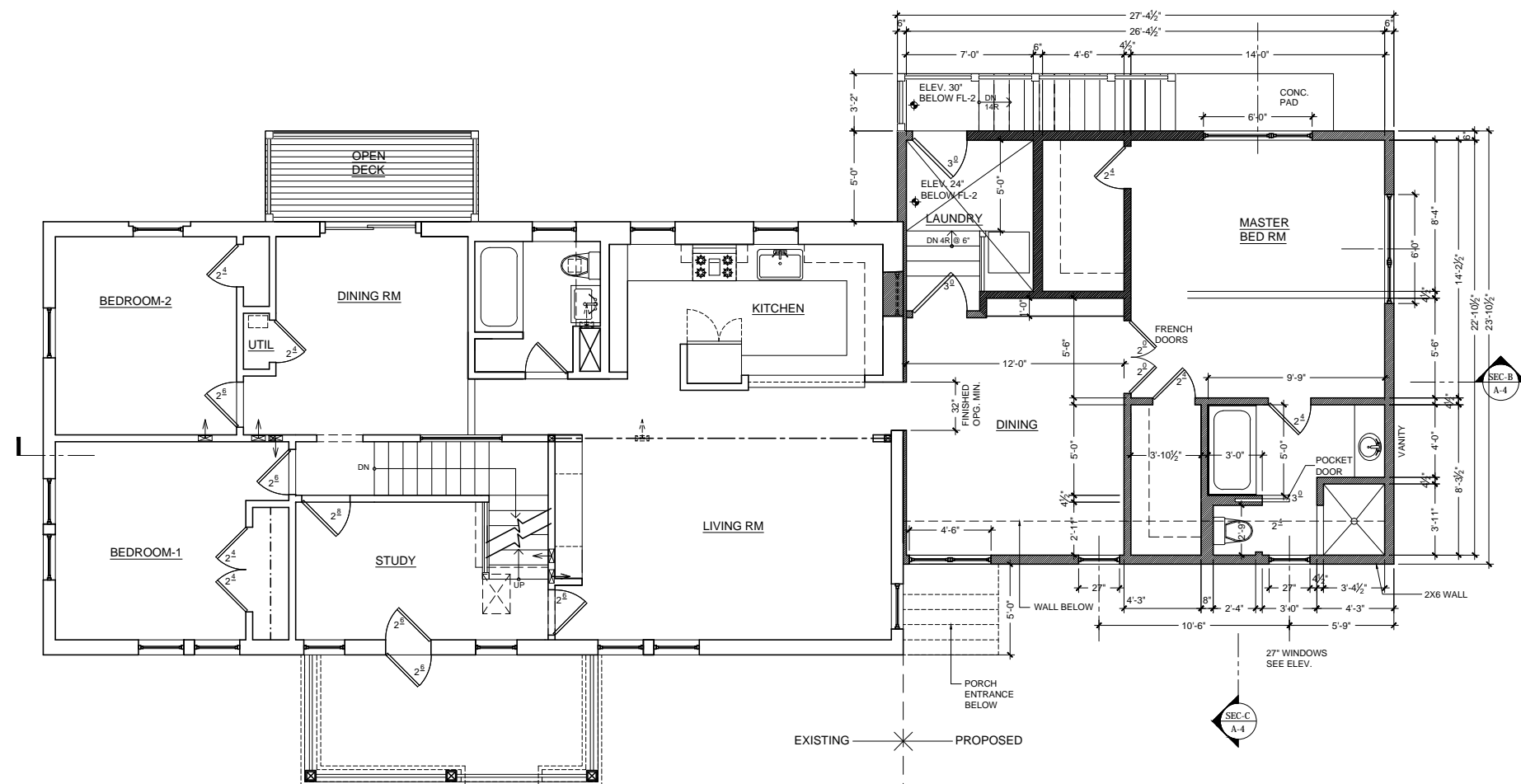
DRAWING TITLE:  
**PROPOSED PLANS  
(PHASE 2)**

JOB No: 12-652  
DATE: 7/24/2014  
SCALE: AS NOTED

SHEET NO.:



**4 PROPOSED ATTIC PLAN (PHASE-2)**  
Scale: 1/4"=1'-0"



**3 PROPOSED 2ND FLOOR PLAN (PHASE-2)**  
Scale: 1/4"=1'-0"

CONSULTING STRUCTURAL ENGINEER:  
**SOUZA, TRUE AND PARTNERS, INC.**  
653 MOUNT AUBURN STREET  
WATERTOWN, MA 02472  
Ph: 617-926-6100, Fax: 617-924-4431

ARCHITECT:  
**PIERCE LAMB ARCHITECTS**  
1075 WASHINGTON STREET  
WEST NEWTON, MA 02465  
Ph: 617-984-1311, Fax: 617-630-9374

PROJECT:  
**126 WESTLAND AVE  
NEWTON, MA**

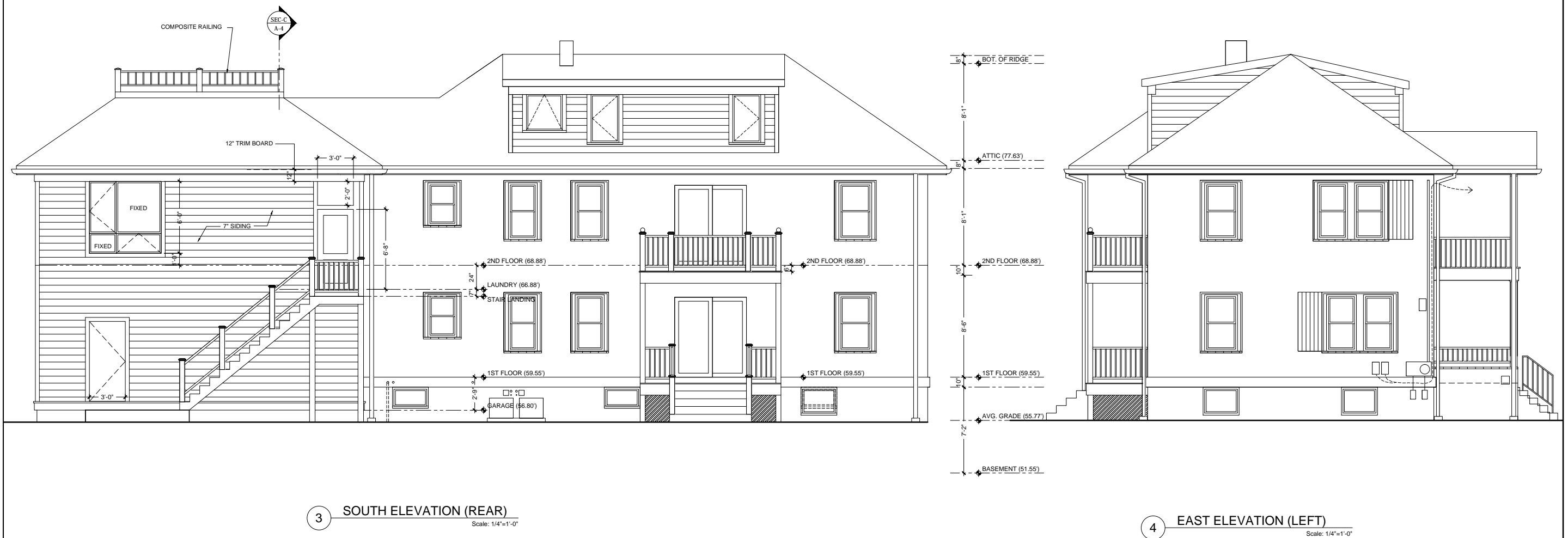
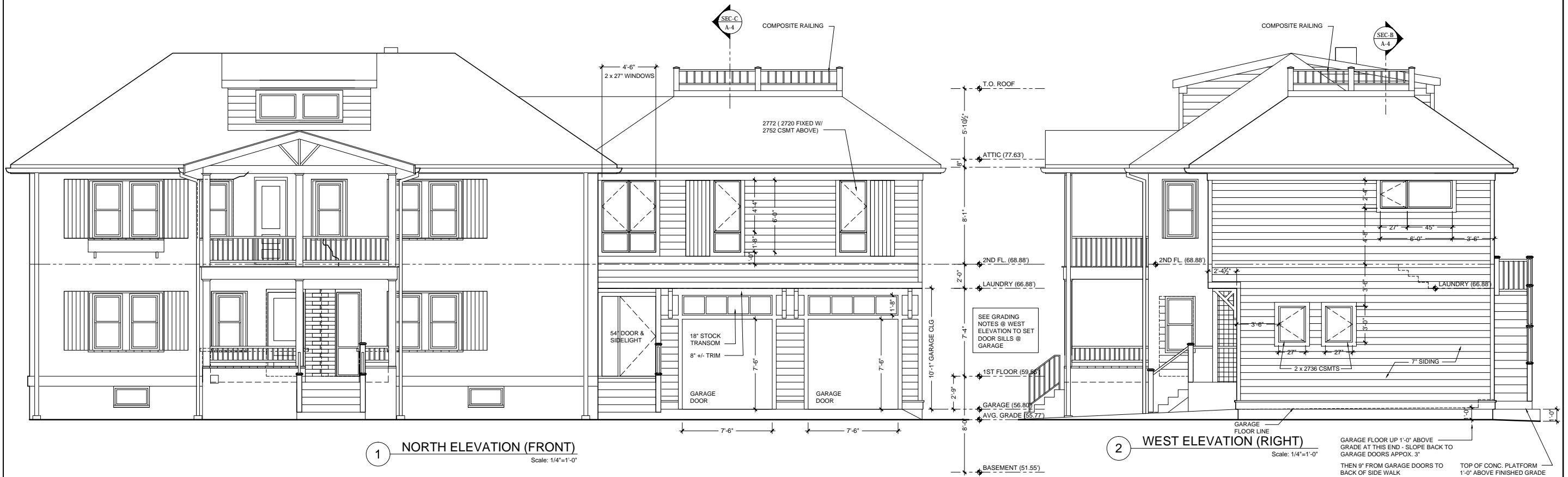
ISSUE:  
7/9/2014

PROFESSIONAL SEAL:

DRAWING TITLE:  
**PROPOSED  
PLANS  
(PHASE 2)**

JOB No: 12-652  
DATE: 7/24/2014  
SCALE: AS NOTED

SHEET NO.:



CONSULTING STRUCTURAL ENGINEER:  
**SOUZA, TRUE AND PARTNERS, INC.**  
653 MOUNT AUBURN STREET  
WATERTOWN, MA 02472  
Ph: 617-926-6100, Fax: 617-924-4431

ARCHITECT:  
**PIERCE LAMB ARCHITECTS**  
1075 WASHINGTON STREET  
WEST NEWTON, MA 02465  
Ph: 617-984-1311, Fax: 617-630-9374

PROJECT:  
**126 WESTLAND AVE  
NEWTON, MA**

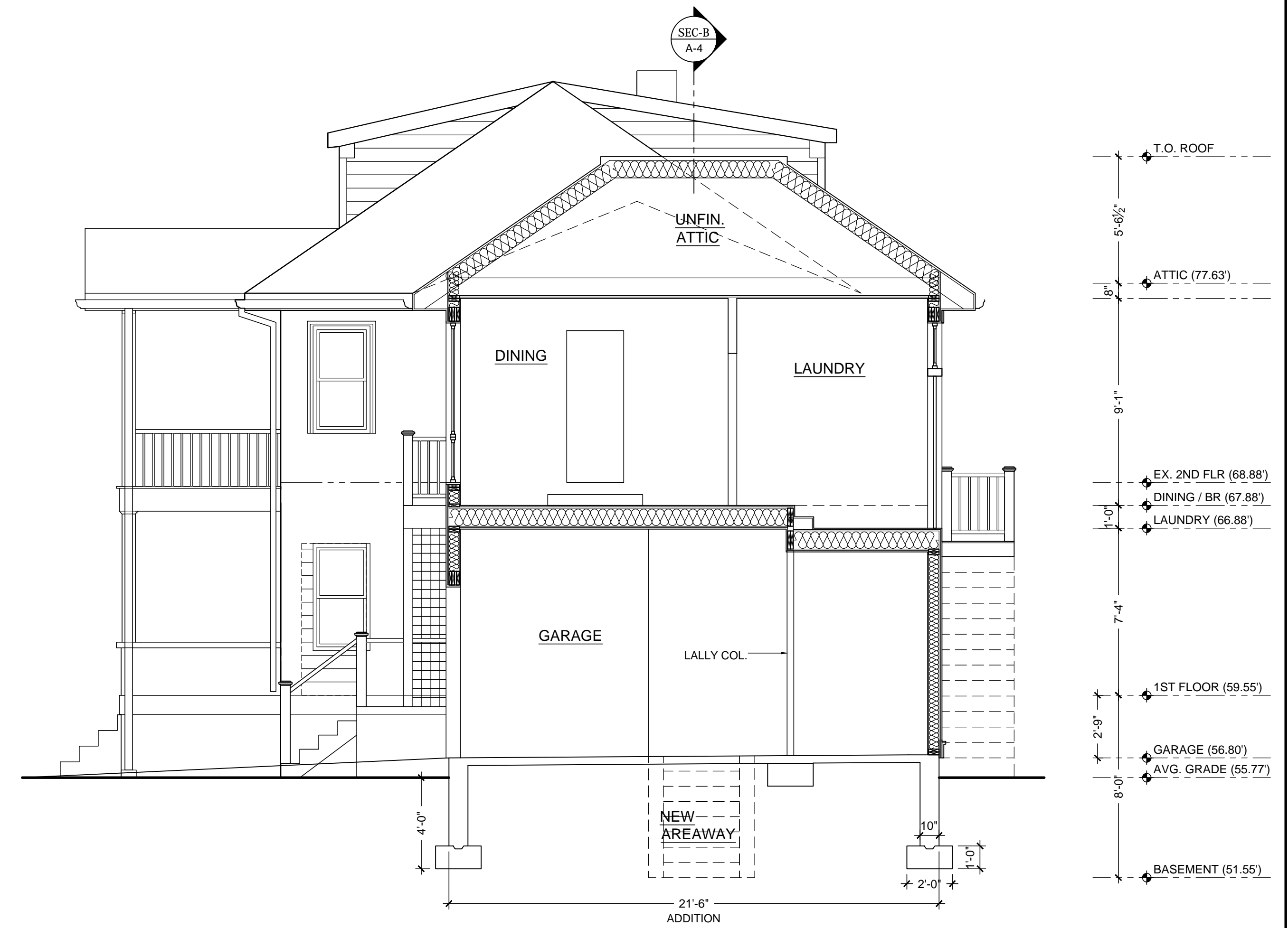
ISSUE:  
7/9/2014

PROFESSIONAL SEAL:

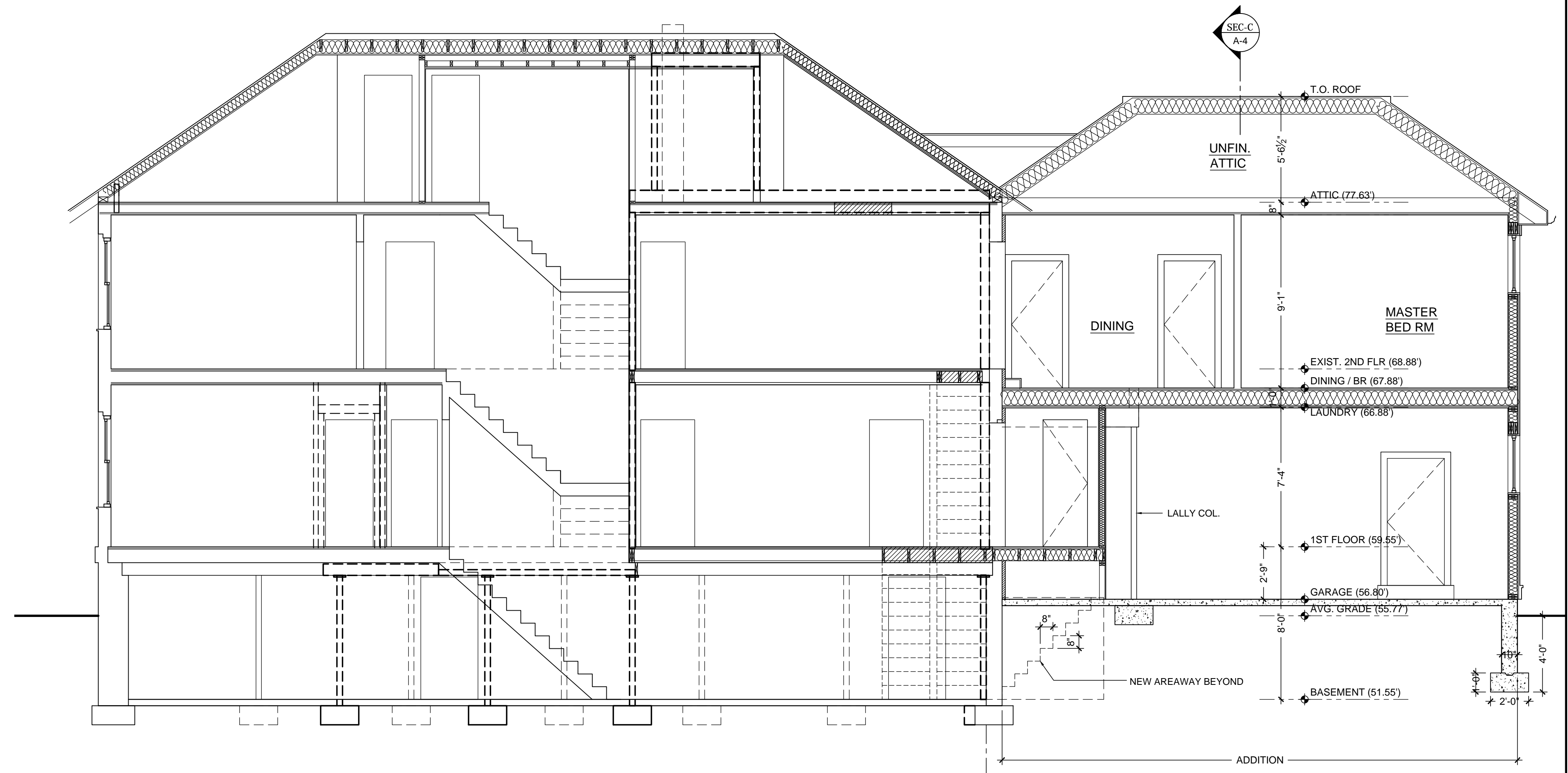
DRAWING TITLE:  
**ELEVATIONS  
(PHASE 2)**

JOB No: 12-652  
DATE: 7/24/2014  
SCALE: AS NOTED

SHEET NO.:



3 SECTION-C  
Scale: 1/4"=1'-0"



2 SECTION-B  
Scale: 1/4"=1'-0"

CONSULTING STRUCTURAL ENGINEER:  
**SOUZA, TRUE AND PARTNERS, INC.**  
653 MOUNT AUBURN STREET  
WATERTOWN, MA 02472  
Ph: 617-926-6100, Fax: 617-924-4431

ARCHITECT:  
**PIERCE LAMB ARCHITECTS**  
1075 WASHINGTON STREET  
WEST NEWTON, MA 02465  
Ph: 617-964-1311, Fax: 617-630-9374

PROJECT:  
**126 WESTLAND AVE  
NEWTON, MA**

ISSUE:  
7/9/2014

PROFESSIONAL SEAL:

DRAWING TITLE:  
**SECTIONS  
(PHASE 2)**

JOB No: 12-652  
DATE: 7/24/2014  
SCALE: AS NOTED

SHEET NO.:

**A-4**