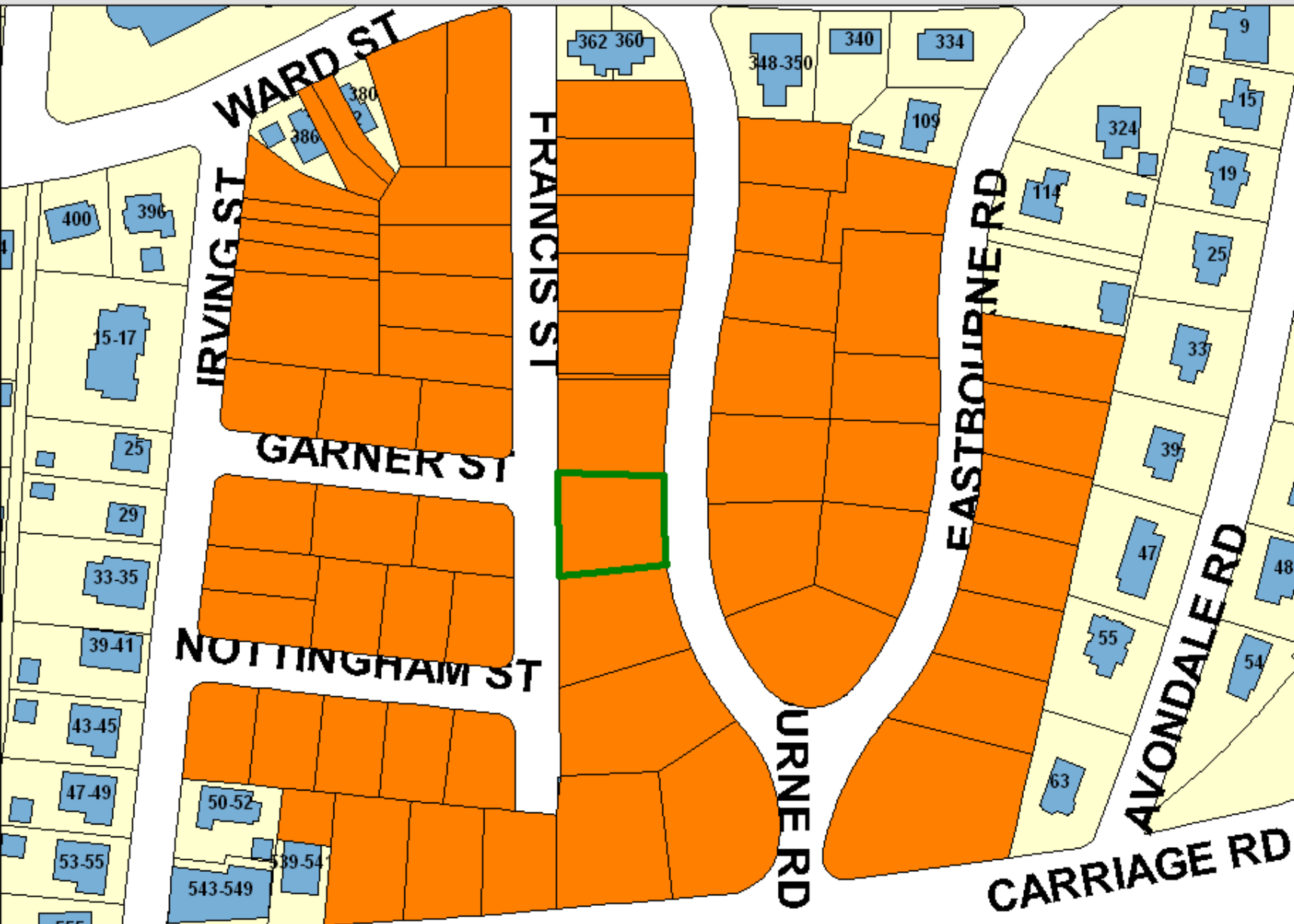


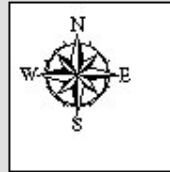
# NEWTON GIS DATA



The information on this map is from the Newton Geographic Information System (GIS). The City of Newton cannot guarantee the accuracy of this information. Each user is responsible for determining the data's suitability for its intended purpose. City departments will not approve applications based solely on GIS data. City staff correct errors as they are identified.

-  Buildings
-  Property Lines
-  Lakes & Rivers
-  Easements

Property Location:  
  
 Property ID:  
  
 Land Use: Lot Size:



1 inch = Approximately 144 Feet

