

UTILITY NOTES:

THE NEW SEWER SERVICE(S) AND/OR STRUCTURES SHALL BE PRESSURE TESTED OR VIDEOTAPED AFTER FINAL INSTALLATION IS COMPLETE. METHOD OF FINAL INSPECTION SHALL BE DETERMINED SOLELY BY THE CONSTRUCTION INSPECTOR FROM THE CITY ENGINEERING DIVISION. THE SEWER SERVICE WILL NOT BE ACCEPTED UNTIL ONE OF THE TWO METHODS STATED ABOVE IS COMPLETED. A CERTIFICATE OF OCCUPANCY WILL NOT BE RECOMMENDED UNTIL THIS TEST IS COMPLETED. A CERTIFICATE OF OCCUPANCY WILL NOT BE RECOMMENDED UNTIL THIS TEST IS COMPLETED AND A WRITTEN REPORT IS RECEIVED BY THE CITY ENGINEER.

THE SEWER SERVICES AND WATER SERVICES NEED TO BE COMPLETELY REMOVED FROM THE MAINS TO THE EXISTING DWELLING AND PROPERLY BACK-FILLED. THE CONTRACTOR SHALL MAKE ARRANGEMENTS TO HAVE THIS ABANDONMENT INSPECTED BY A REPRESENTATIVE OF THE ENGINEERING DIVISION, FAILING TO HAVING THESE INSPECTIONS MAY RESULT IN THE DELAY OR DENIAL OF ISSUING NEW UTILITY CONNECTION PERMITS.

THE CONTRACTOR IS RESPONSIBLE FOR CONTACTING THE ENGINEERING DIVISION AND SCHEDULING AN APPOINTMENT 48 HOURS PRIOR TO THE DATE WHEN THE UTILITIES WILL BE MADE AVAILABLE FOR AN INSPECTION OF WATER SERVICES, SEWER SERVICE AND DRAINAGE SYSTEM INSTALLATION. THE UTILITY IN QUESTION SHALL BE FULLY EXPOSED FOR THE INSPECTOR TO VIEW; BACK FILLING SHALL ONLY TAKE PLACE WHEN THE CITY INSPECTOR HAS GIVEN THEIR APPROVAL.

PRIOR TO AN OCCUPANCY PERMIT BEING ISSUED, THE APPLICANT'S ENGINEER SHALL SUBMIT TO THE ENGINEERING DIVISION AN AS BUILT DRAWING IN DIGITAL AND HARD COPY FORMAT.

IF A CERTIFICATE OF OCCUPANCY IS REQUESTED PRIOR TO ALL SITE WORK BEING COMPLETED, THE APPLICANT WILL BE REQUIRED TO POST A CERTIFIED BANK CHECK IN THE AMOUNT TO COVER THE REMAINING WORK. THE CITY ENGINEER SHALL DETERMINE THE VALUE OF THE UNCOMPLETED WORK.

No excavation is allowed within any City right-of-way between November 15th and April 15th. If an emergency exists or there are extenuating circumstances, Applicant may seek permission for such work from the City DPW Commissioner via the City Engineer. If permission is granted, special construction standards will be applied. Applicant or Applicant's representative must contact the City of Newton Engineering Department prior to start of work for clarification.

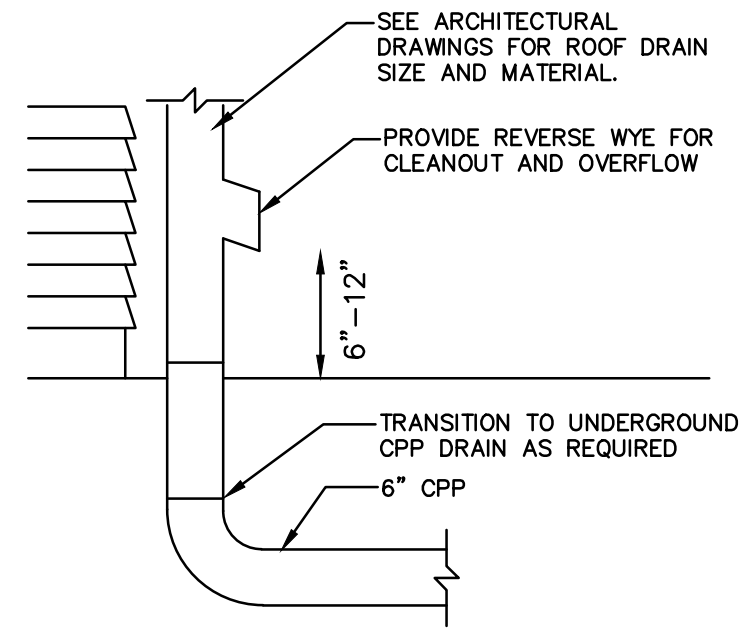
The new water and sewer services must be in-place AND accepted by the Engineering Division prior to the issuance of the Certificate of Occupancy.

As of March 1, 2009, all trench excavation contractors shall comply with Massachusetts General Laws Chapter 82A, Trench Excavation Safety Requirements, to protect the general public from unauthorized access to unattended trenches. Trench Excavation Permit required. This applies to all trenches on public and private property.

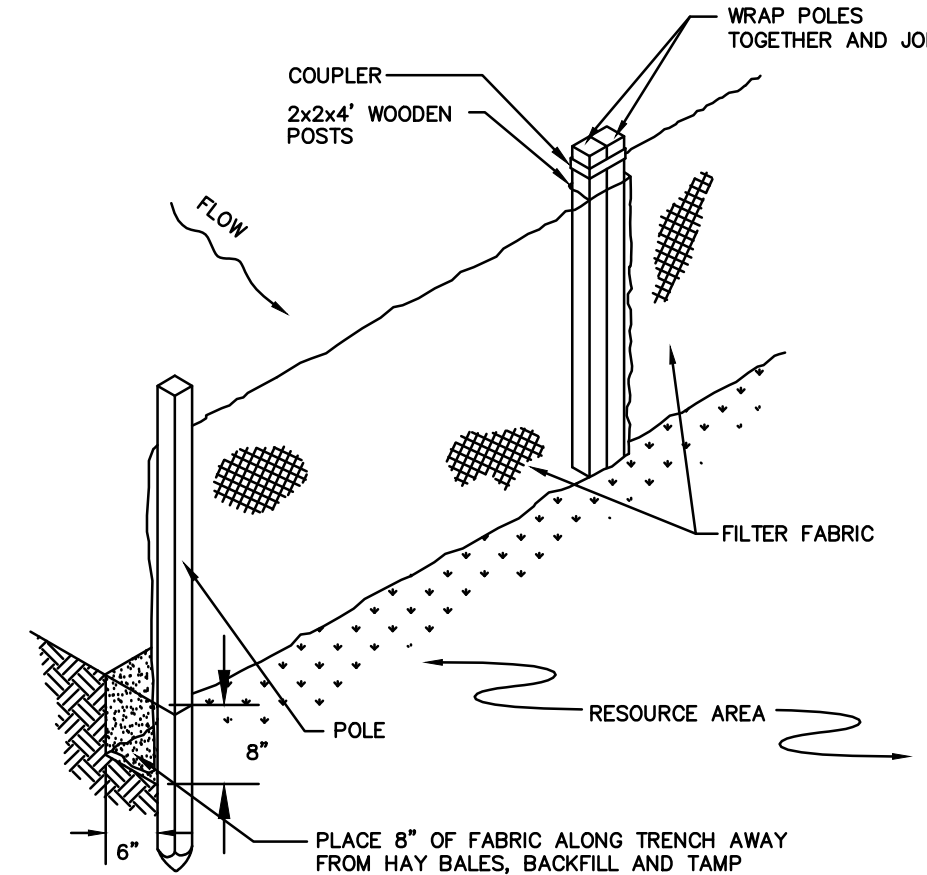
The Applicant will have to apply for Street Opening, Utility Connection and Trench Permits as well as an Install Curb & Sidewalk Permit with the DPW prior to start of work.

With the exception of gas services, all utility trenches within the City of Newton right-of-way will be backfilled with Type IE (excavatable) controlled density fill, as specified by the City of Newton Engineering Specifications.

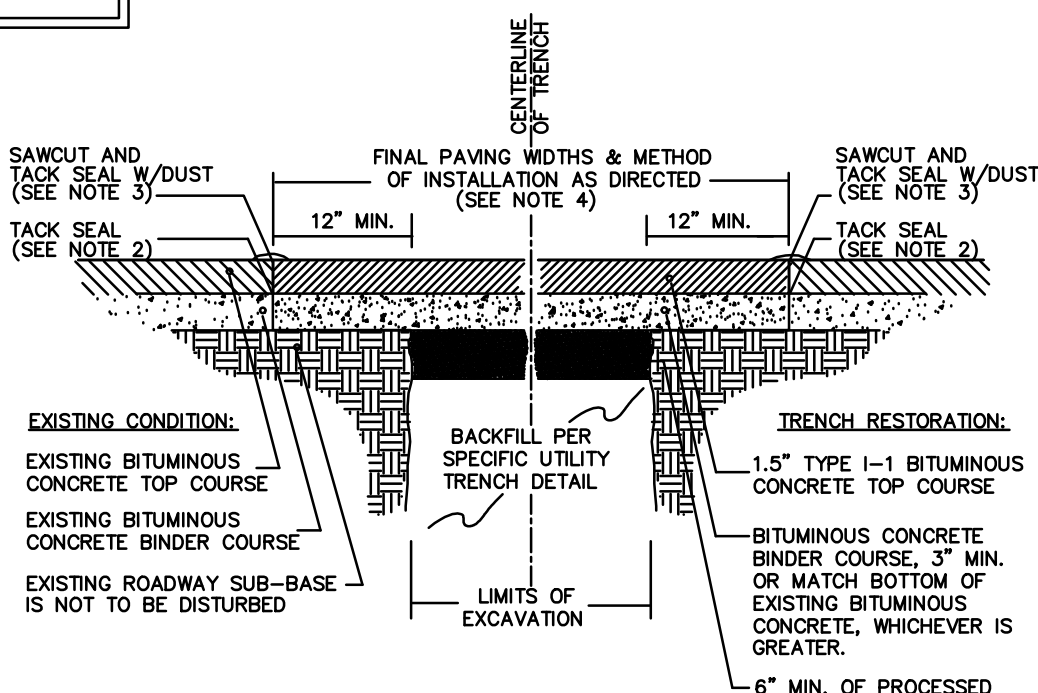
Approval of this plan by the City of Newton Engineering Division implies that the plan meets the minimal design standards of the City of Newton. However, the Engineering Division makes no representations and assumes no responsibility for the design(s) in terms of suitability for the particular site conditions or of the functionality or performance of any items constructed in accordance with the design(s). The City of Newton assumes no liabilities for design assumption, errors or omissions by the Engineer of Record.



ROOF LEADER DETAIL
NOT TO SCALE

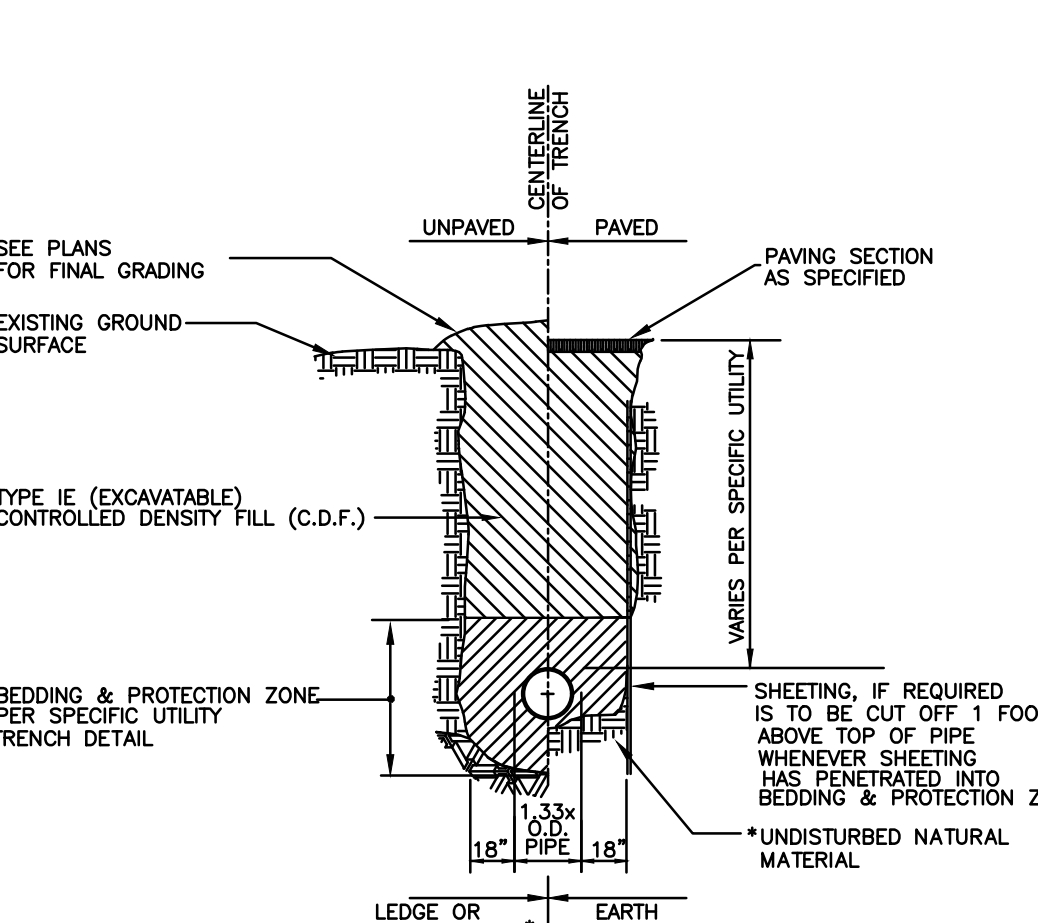


SILT FENCE
NOT TO SCALE

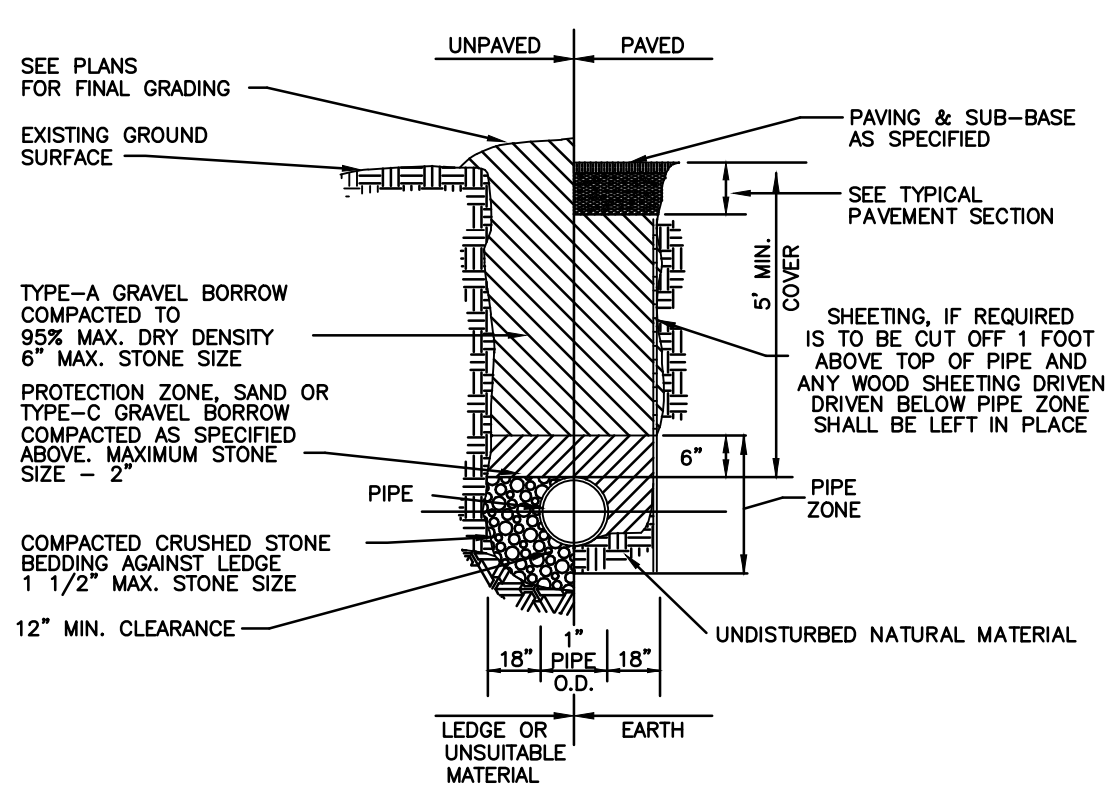


- ALL INSTALLATION AND MATERIAL SPECIFICATIONS PER MASS. HIGHWAY DEPARTMENT STANDARD SPECIFICATIONS FOR HIGHWAYS AND BRIDGES, 1988 AS AMENDED.
- ALL EXPOSED BITUMINOUS CONCRETE IS TO BE TACKED PER MHD PRIOR TO NEW BITUMINOUS CONCRETE INSTALLATION.
- ALL EXPOSED JOINTS ARE TO BE SEALED WITH TACK AND STONE DUST.
- ALL TOP COURSE APPLIED AT A WIDTH OF 6' WIDE OR GREATER IS TO BE PLACED BY MACHINE/BOX SPREADER WHEN & AS DIRECTED BY THE CITY OF NEWTON.

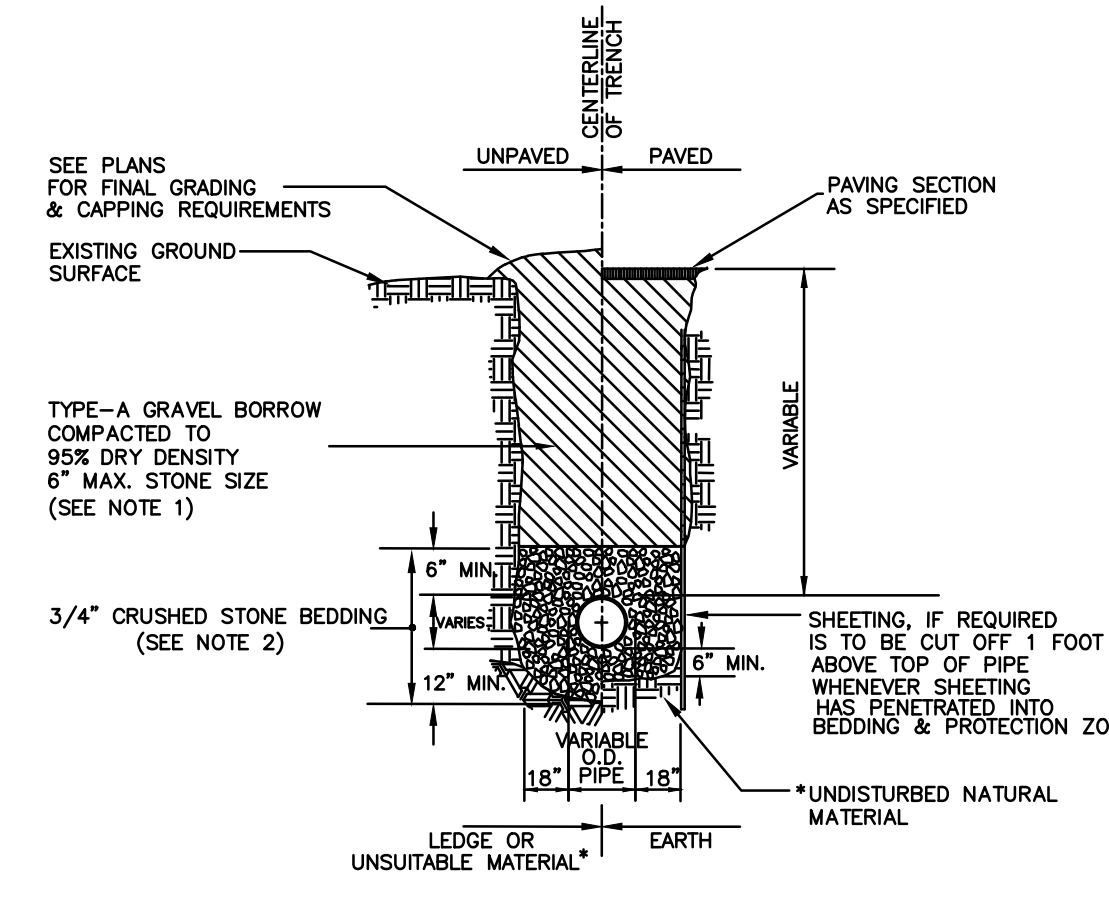
TYPICAL TRENCH REPAIR & PAVEMENT SECTION DETAIL (1/2)
NOT TO SCALE



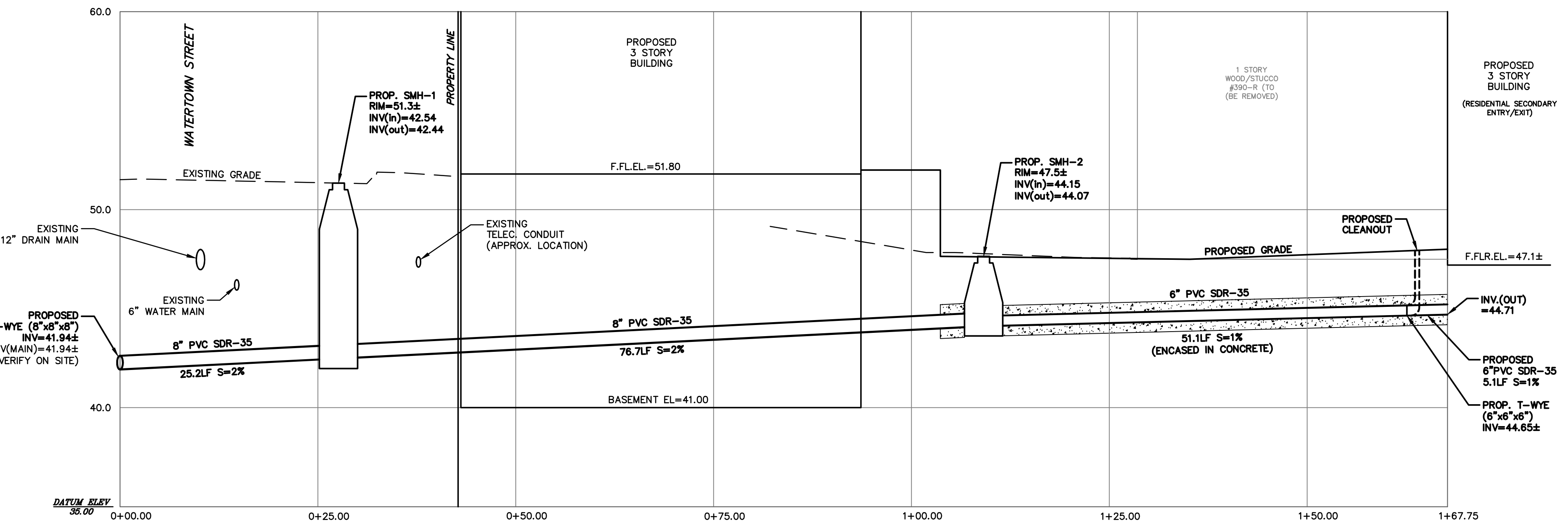
TYPICAL C.D.F. TRENCH DETAIL
NOT TO SCALE



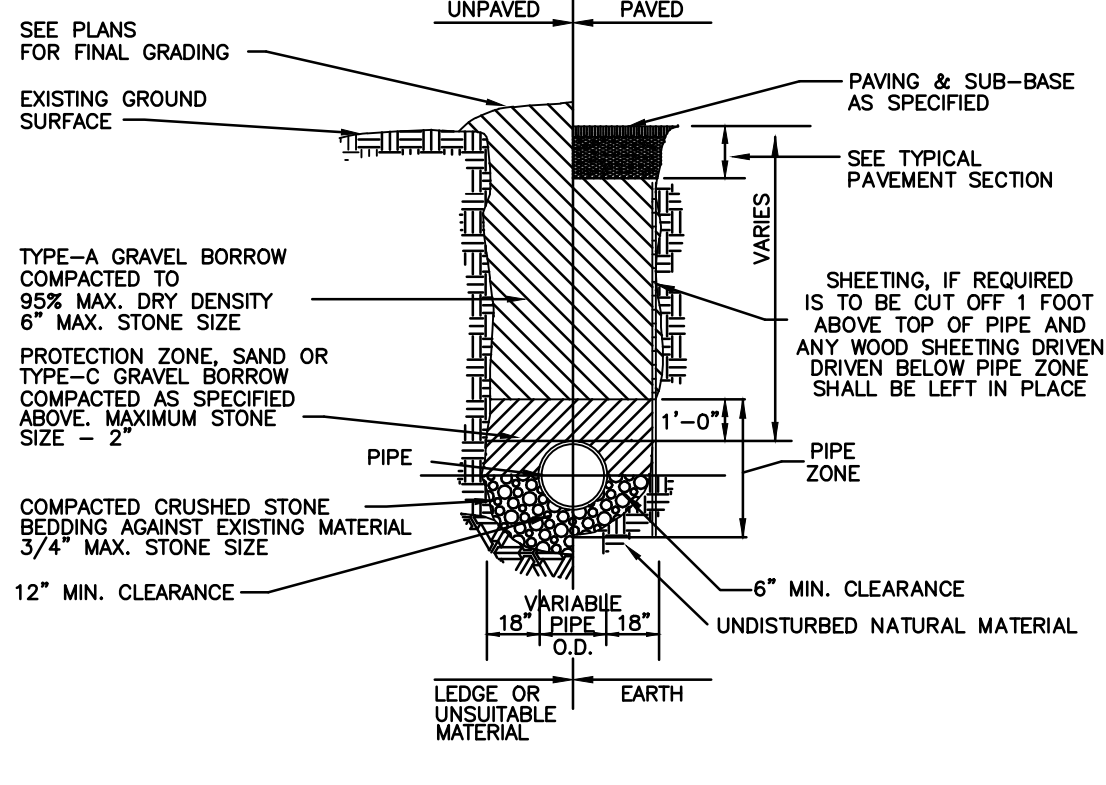
- TYPICAL WATER TRENCH DETAIL**
NOT TO SCALE
- GRAVEL BORROW SHALL CONFORM TO MASS HIGHWAY SPECIFICATION M1.03.0
 - CRUSHED STONE BEDDING SHALL CONFORM TO MASS HIGHWAY SPECIFICATION M2.01.1
- * SUITABILITY OF MATERIAL IS TO BE DETERMINED BY THE CITY OF NEWTON.



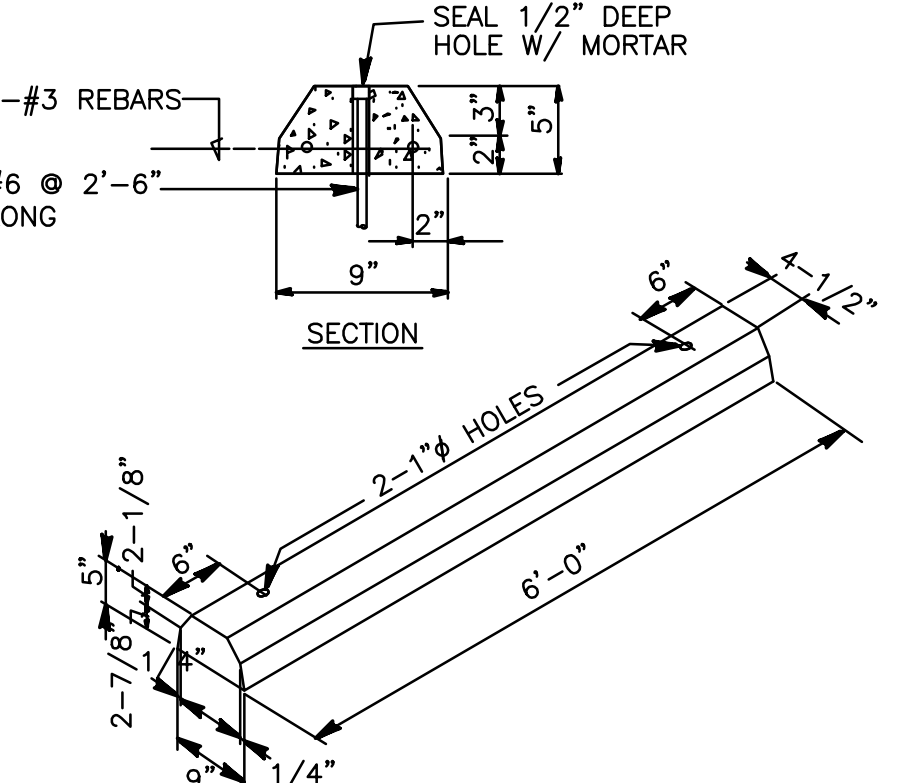
- GRAVITY SEWER TRENCH DETAIL**
NOT TO SCALE
- GRAVEL BORROW SHALL CONFORM TO MASS HIGHWAY SPECIFICATION M1.03.0
 - CRUSHED STONE BEDDING SHALL CONFORM TO MASS HIGHWAY SPECIFICATION M2.01.1
- * SUITABILITY OF MATERIAL IS TO BE DETERMINED BY THE CITY OF NEWTON.



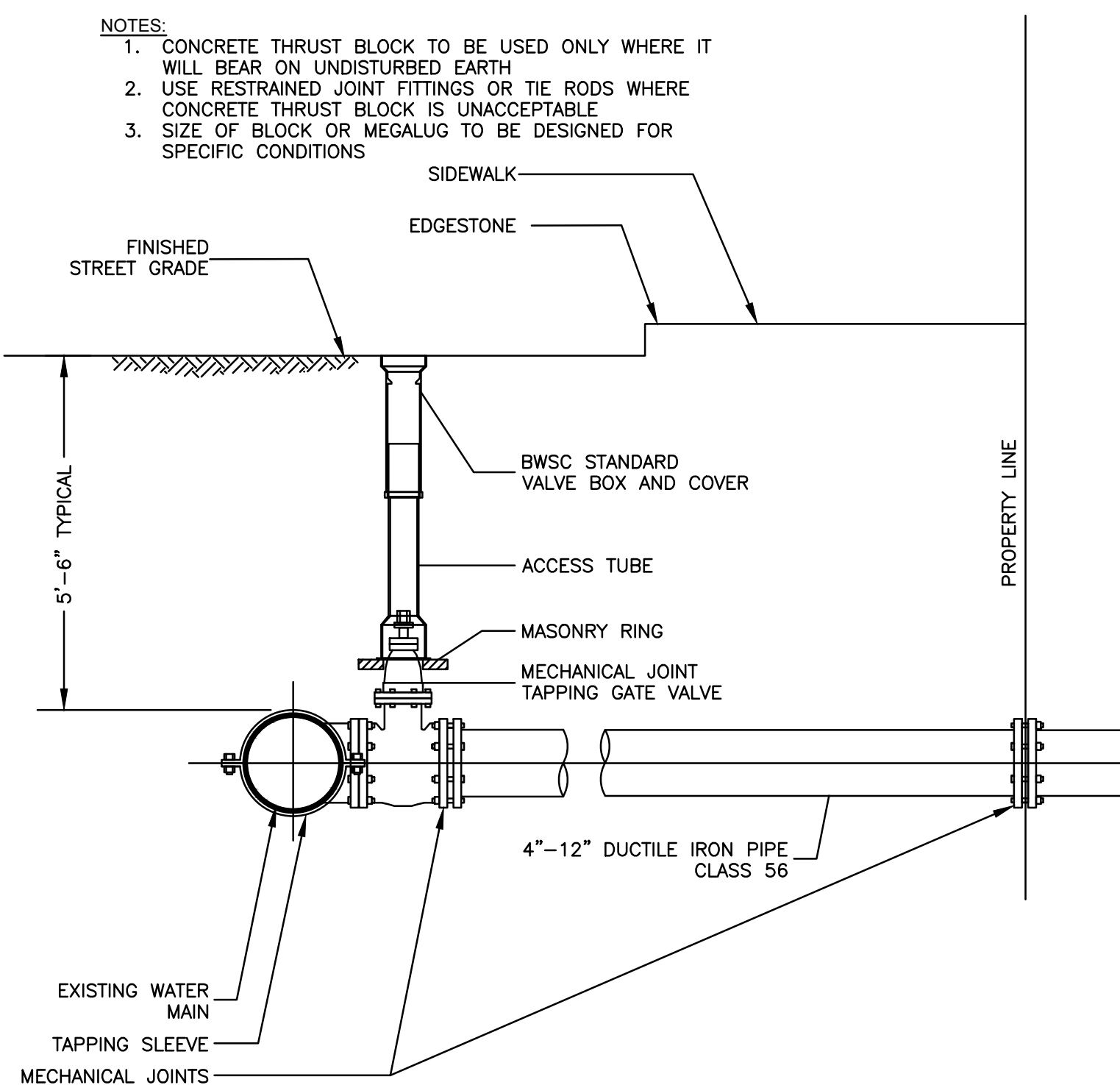
PROPOSED SEWER PROFILE
SCALE: 1" = 10' (HORIZONTAL)
SCALE: 1" = 4' (VERTICAL)



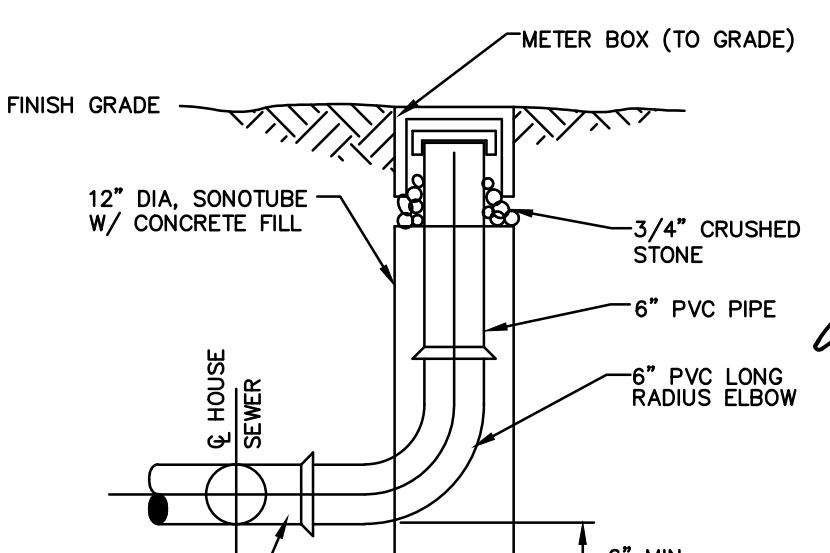
- TYPICAL P.V.C. DRAIN TRENCH DETAIL**
NOT TO SCALE
- GRAVEL BORROW SHALL CONFORM TO MASS HIGHWAY SPECIFICATION M1.03.0
 - CRUSHED STONE BEDDING SHALL CONFORM TO MASS HIGHWAY SPECIFICATION M2.01.1
- * SUITABILITY OF MATERIAL IS TO BE DETERMINED BY THE CITY OF NEWTON.



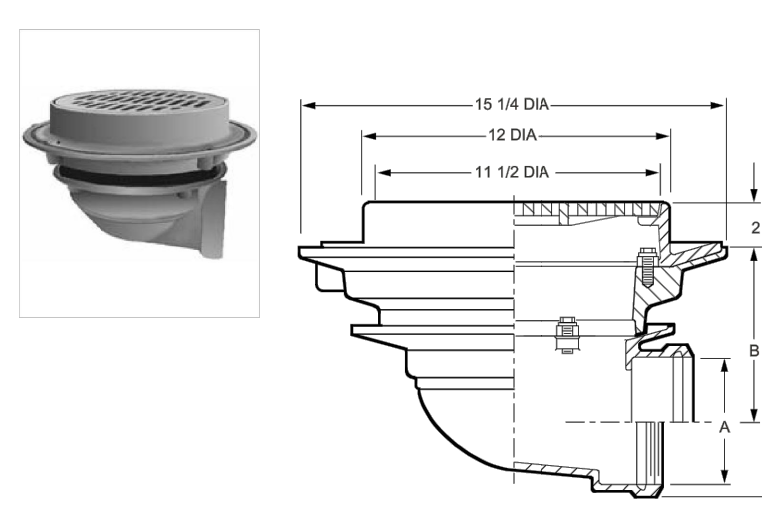
PRECAST CONCRETE WHEEL STOP
NOT TO SCALE



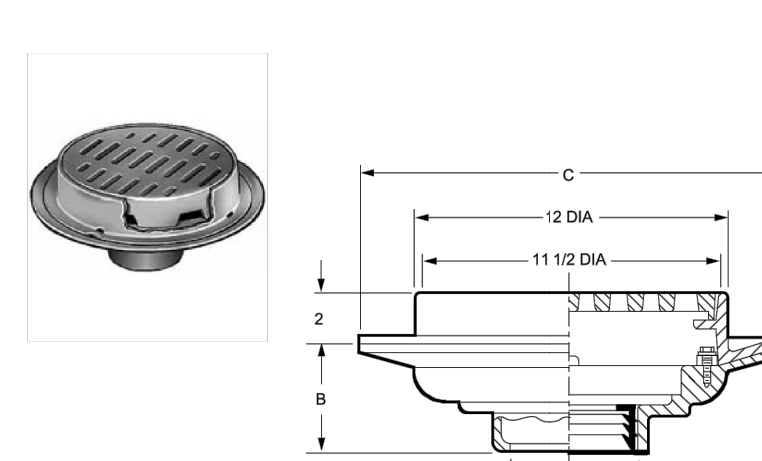
TYPICAL WATER PIPE CONNECTION WITH TAPPING SLEEVE AND GATE VALVE
SCALE: NOT TO SCALE



SEWER CLEANOUT
NOT TO SCALE



A OUTLET SIZE	TOP SIZE	FREE AREA SQ IN	B	DUCCO CI PB TOP	DUCCO CI NB TOP	APPROX. WEIGHT LBS
02"	12"	28.5	6 7/8	1,036.00	1,431.00	51
03"	12"	28.5	6 3/8	1,036.00	1,431.00	51
04"	12"	28.5	5 7/8	1,036.00	1,431.00	51
05"	12"	28.5	5	1,036.00	1,431.00	51
06"	12"	28.5	4 1/2	1,036.00	1,431.00	51



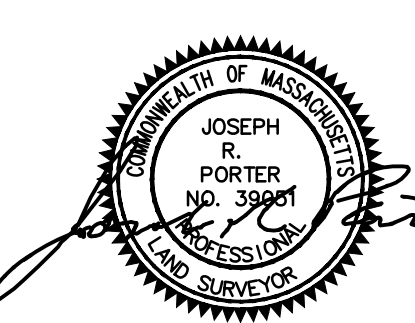
A OUTLET SIZE	TOP SIZE	FREE AREA SQ IN	C	DUCCO CI PB TOP	DUCCO CI NB TOP	APPROX. WEIGHT LBS
02, 03, 04"	12"	29	15 1/4	695.00	1,090.00	45
05, 06"	12"	29	15 1/4	695.00	1,090.00	47

FLOOR DRAIN
NOT TO SCALE

DIG SAFE

EXCAVATORS BEFORE YOU DIG CONTACT THE DIG SAFE CENTER TO PREVENT DAMAGE TO TELEPHONE, GAS OR ELECTRIC UNDERGROUND FACILITIES OF MEMBER UTILITIES. CALL TOLL FREE 1-888-322-4844. MASSACHUSETTS STATE LAW REQUIRES NOTIFICATION AT LEAST THREE BUSINESS DAYS BEFORE YOU START DIGGING OPERATIONS. IN AN EMERGENCY, CALL IMMEDIATELY.

- NOTES:**
- CONCRETE THRUST BLOCK TO BE USED ONLY WHERE IT WILL BEAR ON UNDISTURBED EARTH
 - USE RESTRAINED JOINT FITTINGS OR TIE RODS WHERE CONCRETE THRUST BLOCK IS UNACCEPTABLE
 - SIZE OF BLOCK OR MEGALUG TO BE DESIGNED FOR SPECIFIC CONDITIONS



DETAIL SHEET
NEWTON, MASSACHUSETTS
SHOWING PROPOSED CONDITIONS AT
#386-#394 WATERTOWN STREET
SCALE: AS-SHOWN DATE: JUNE 12, 2017

PROJECT: 216101
VTP ASSOCIATES INC.
LAND SURVEYORS - CIVIL ENGINEERS. 132 ADAMS STREET 2ND FLOOR SUITE 3 NEWTON, MA 02458 (617) 332-8271
SHEET 3 OF 3