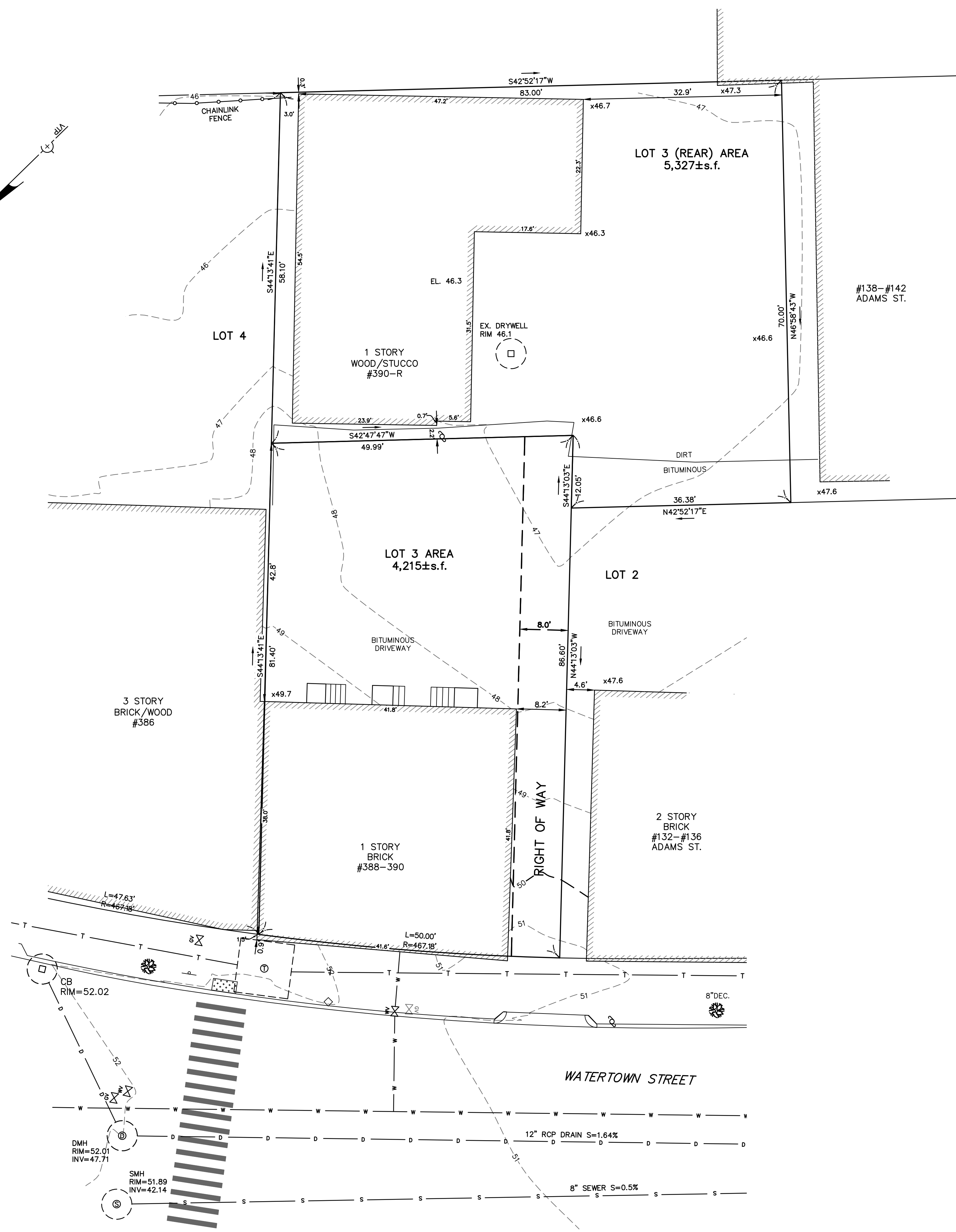
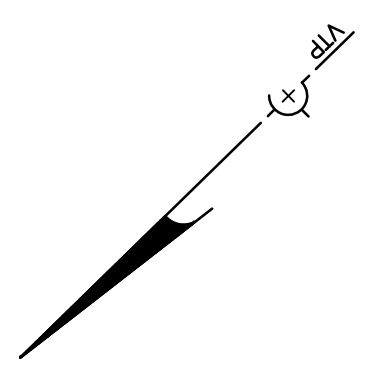


LEGEND

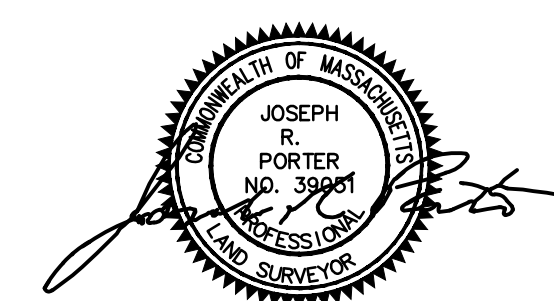
BUILDING	
PROPERTY LINE W/ BEARING DISTANCE	S81°56'34"E 116.23'
CONTOUR	-70-
STOCKADE FENCE	
CHAINLINK FENCE	
PICKET FENCE	
SEWER LINE	S
DRAIN LINE	D
WATER LINE	W
GAS LINE	G
GAS VALVE	
WATER VALVE	
DRAIN MANHOLE	
SEWER MANHOLE	
CATCH BASIN	
UTILITY POLE	
LIGHT POLE	
DECIDUOUS TREE	DEC. 22"
CONIFEROUS TREE	CON. 12"
FIRE HYDRANT	



ZONING CHART		
NEWTON, MASSACHUSETTS		
ZONE: BU-1	SUBMISSION: SPECIAL PERMIT	
REGULATION	REQUIRED	EXISTING
Lot Area (min.)	10,000s.f.	9,542s.f.
Lot Area Per Unit (min.)	1,200s.f.	N/A
Front Setback (min.)	Average (0')	0'
Side Setback (Left)	1/2 bldg ht or equal to abutting side yard setback	0'
Side Setback (Right)	1/2 bldg ht or equal to abutting side yard setback	8.2'
Rear Setback (min.)	0'	0.3'
Building Height (max.) 3 stories	36'	-
Average Grade	-	-
Lot Coverage	none	N/A
Open Space	none	N/A

TOPOGRAPHIC SITE PLAN
 NEWTON, MASSACHUSETTS
 SHOWING EXISTING CONDITIONS AT
 #386-#394 WATERTOWN STREET
 SCALE: 1in.=10ft. DATE: FEBRUARY 22, 2016

PROJECT: 216101



VTP
 ASSOCIATES
 INC.

LAND SURVEYORS - CIVIL ENGINEERS. 132
 ADAMS STREET 2ND FLOOR SUITE 3
 NEWTON, MA 02458
 (617) 332-8271

