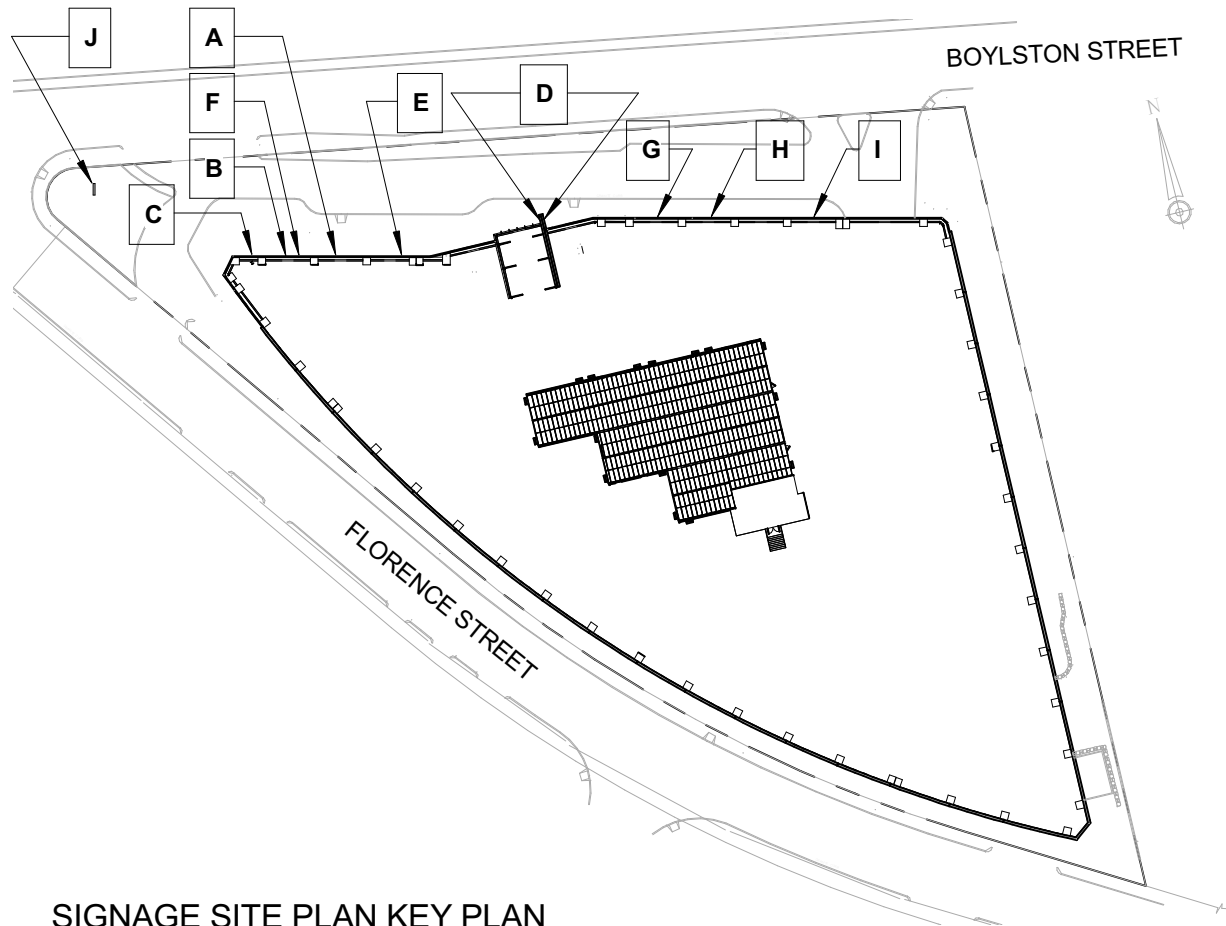


COMPREHENSIVE SIGNAGE & PARKING SUMMARY LIFETIME CENTER 300 BOYLSTON ST





SIGNAGE SITE PLAN KEY PLAN

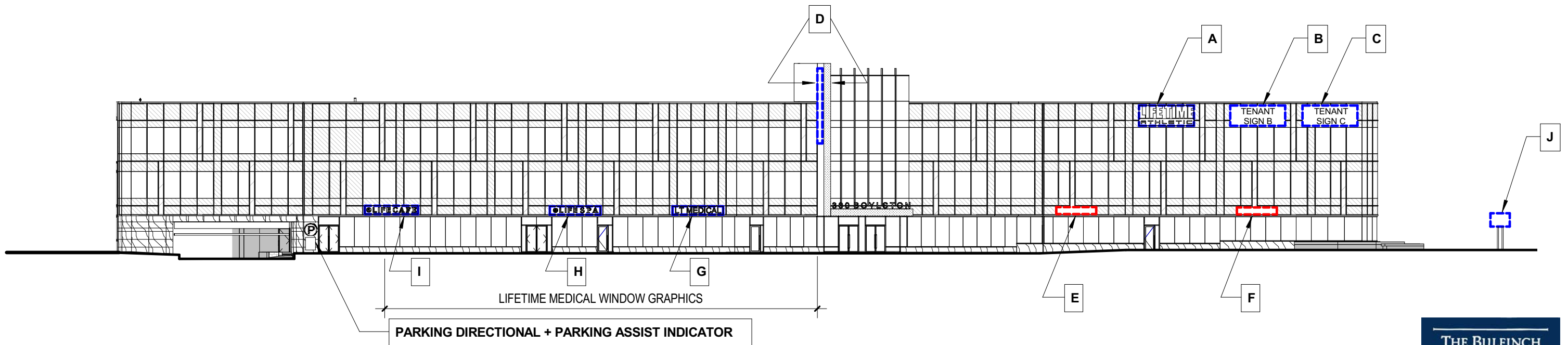
Lifetime Center at 300 Boylston Street Proposed Signage

Signs in Commercial Districts	Sign Area SF
2 Principal signs @ 100 SF each	200 (Business on a corner lot)
2 Secondary signs @ 50 SF each	100
Total sign area allowed	300

	Proposed Signage	Quantity	Sign Area	Sign Message
A	1st Principal Sign	1	100	Lifetime Athletic
B	2nd Principal Sign	1	50	TENANT SIGN B <i>*note 2</i>
C	2nd Principal Sign	1	50	TENANT SIGN C <i>*note 2</i>
D	Secondary Sign - Building Identity	1	63	Lifetime Center <i>*note 1</i>
E	Secondary Sign	1	25	Tenant Retail TBD
F	Secondary Sign	1	25	Tenant Retail TBD
G	Secondary Sign	1	37.5	LT Medical
H	Secondary Sign	1	37.5	LifeSPA
I	Secondary Sign	1	40	LifeCafe
J	Exterior Pylon Sign	1	23	Lifetime Center (Illuminated)
			451	

*Note 1 perpendicular wall sign, 2 sided

*Note 2 Sign back panel = 100 SF

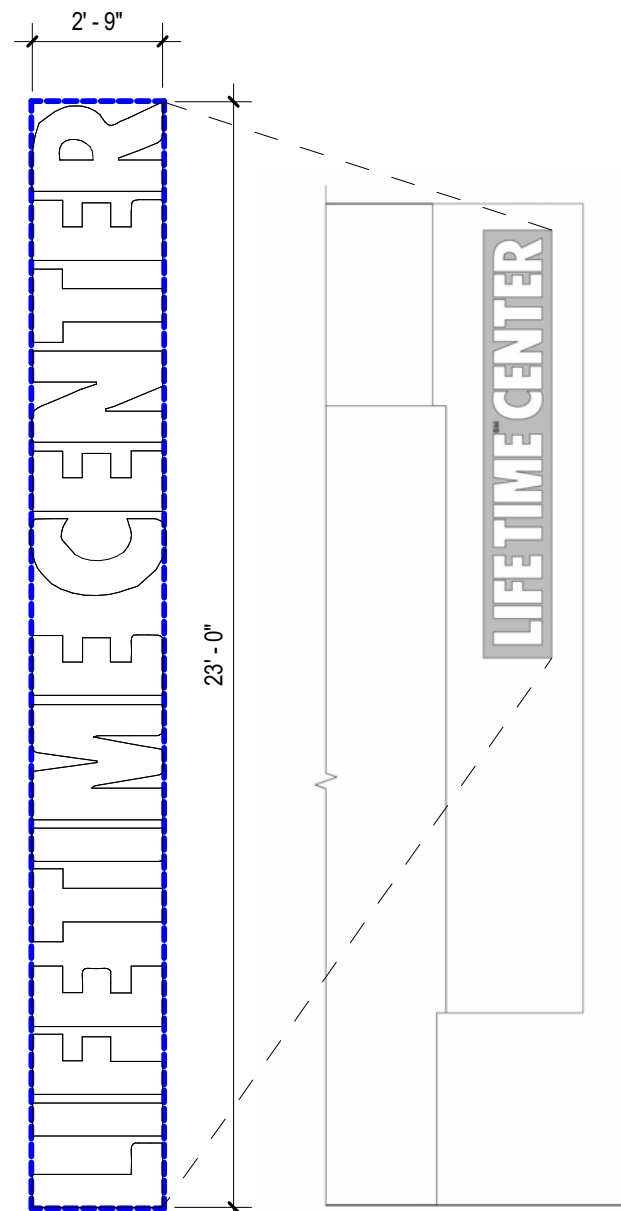
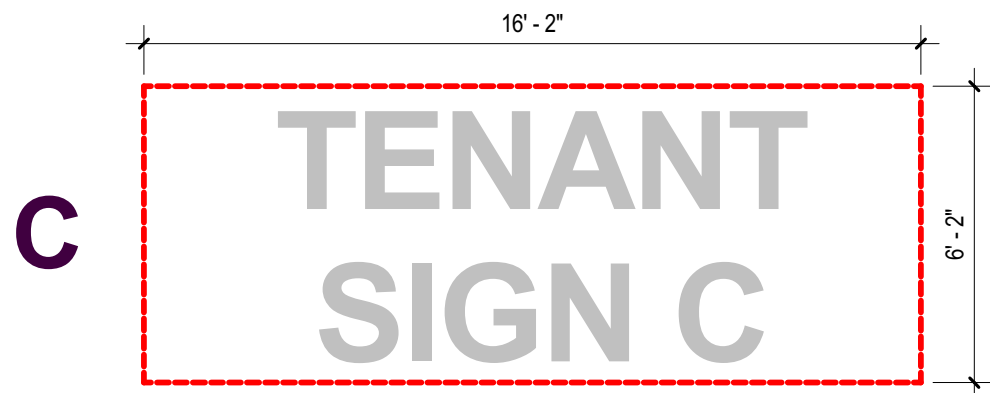
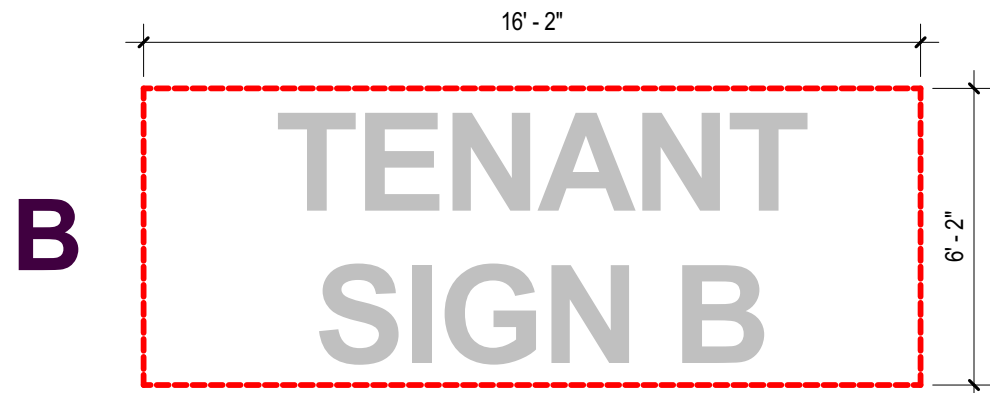
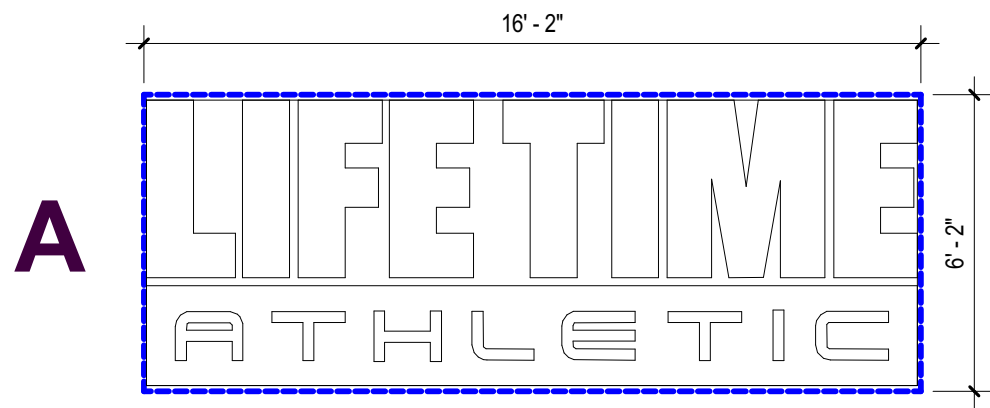


BOYLSTON STREET ELEVATION - SIGNAGE EXHIBIT OPTION 1



LIFETIME CENTER 300 Boylston Street, Chestnut Hill MA

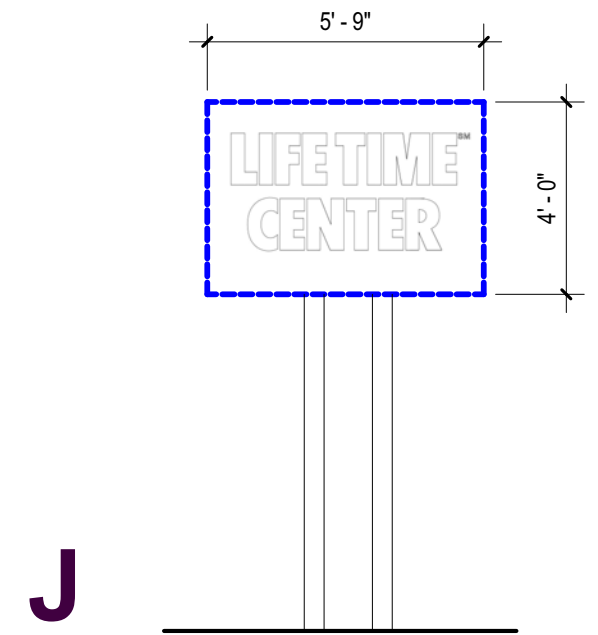
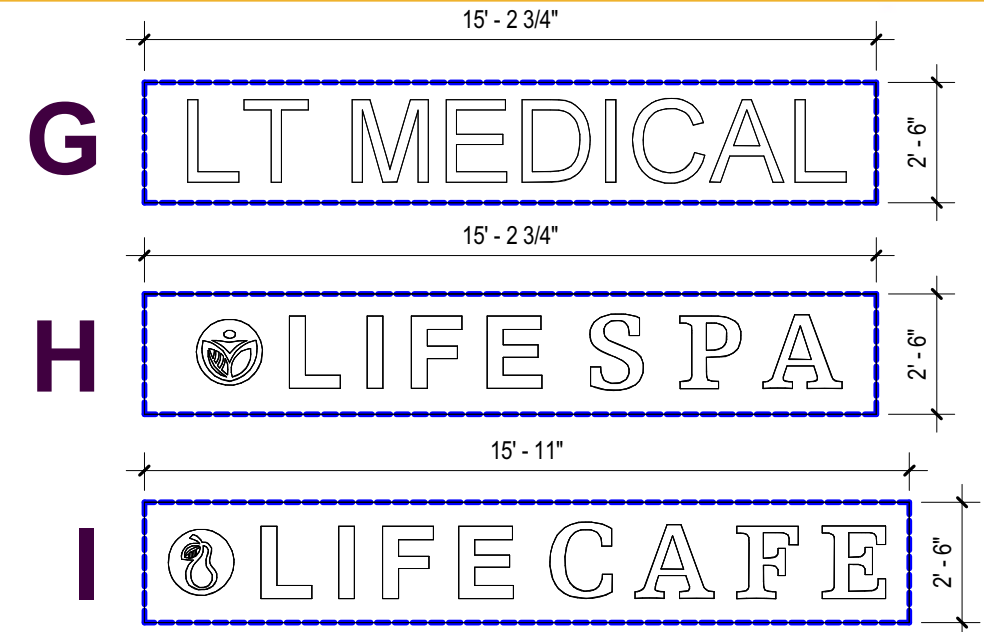
BUILDING SIGNAGE - BOYLSTON STREET



TWO SIDED BUILDING IDENTITY SIGN

EAST

WEST



TWO SIDED BUILDING IDENTITY PYLON SIGN
EXISTING NON-CONFORMING



LIFETIME CENTER 300 Boylston Street, Chestnut Hill MA

BUILDING SIGNAGE - BOYLSTON STREET

