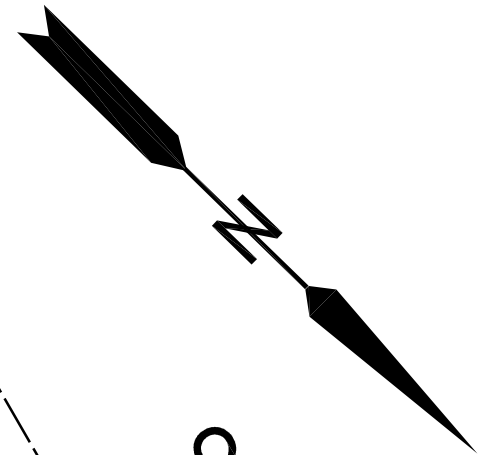
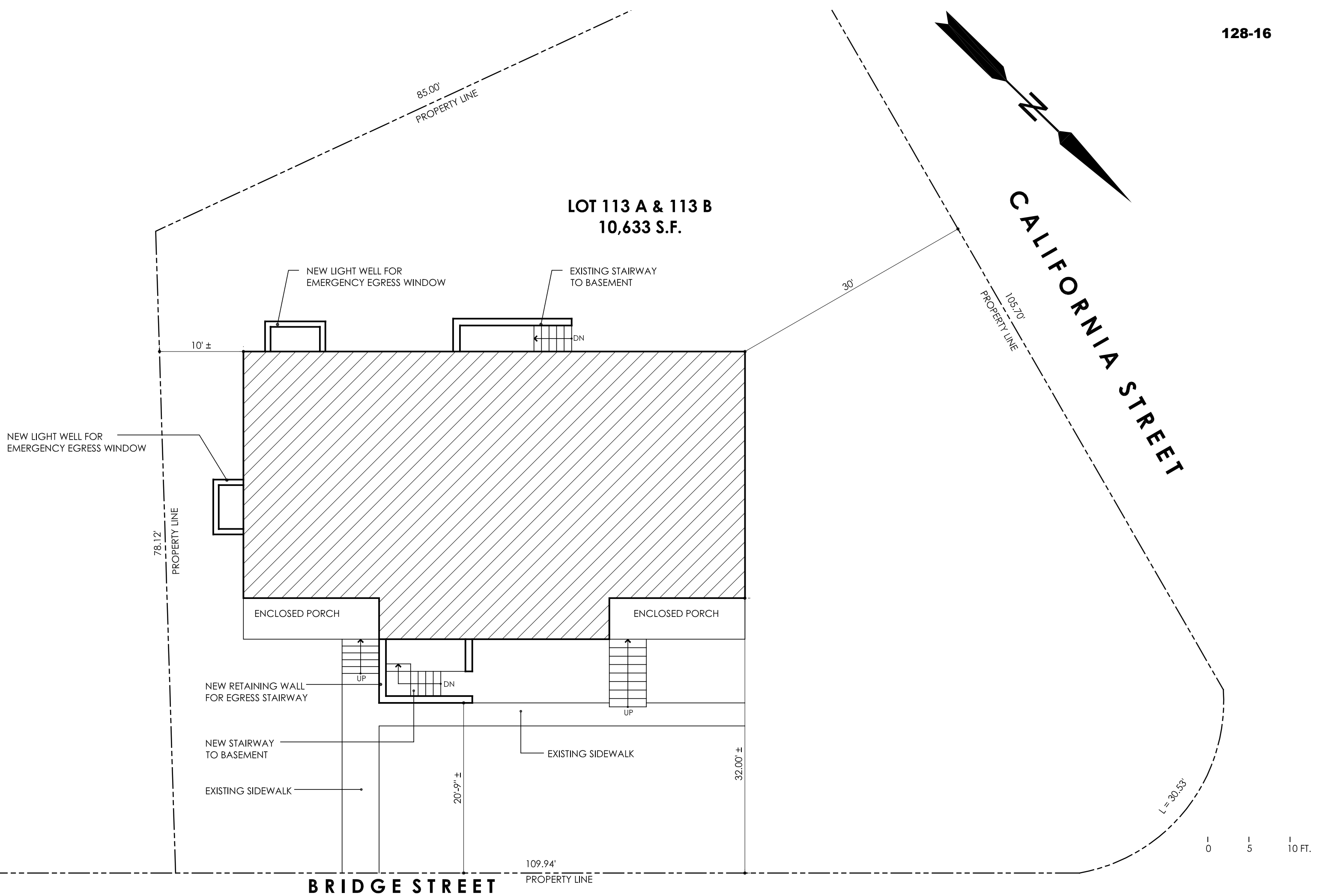
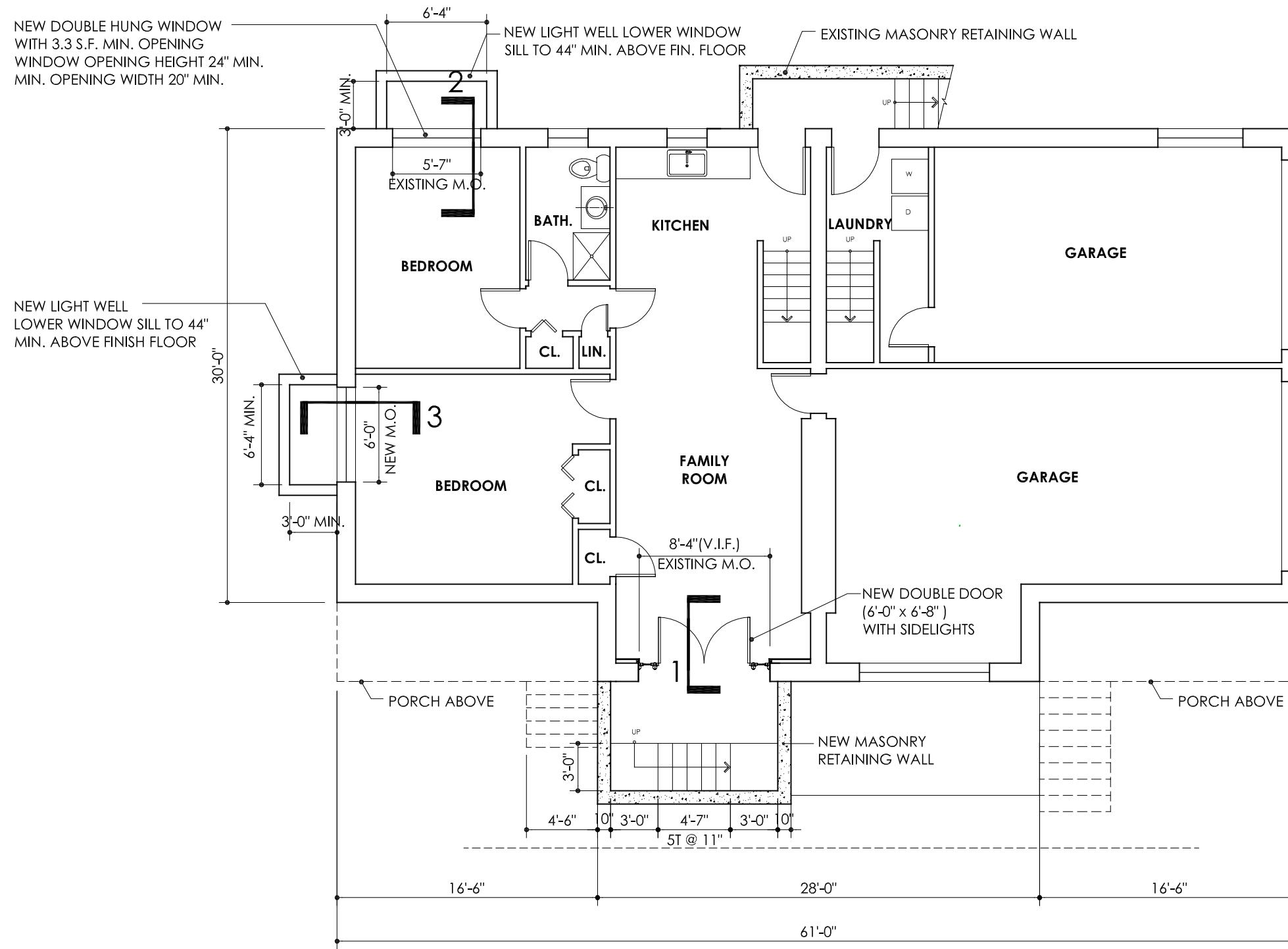


LOT 113 A & 113 B
10,633 S.F.



CALIFORNIA STREET





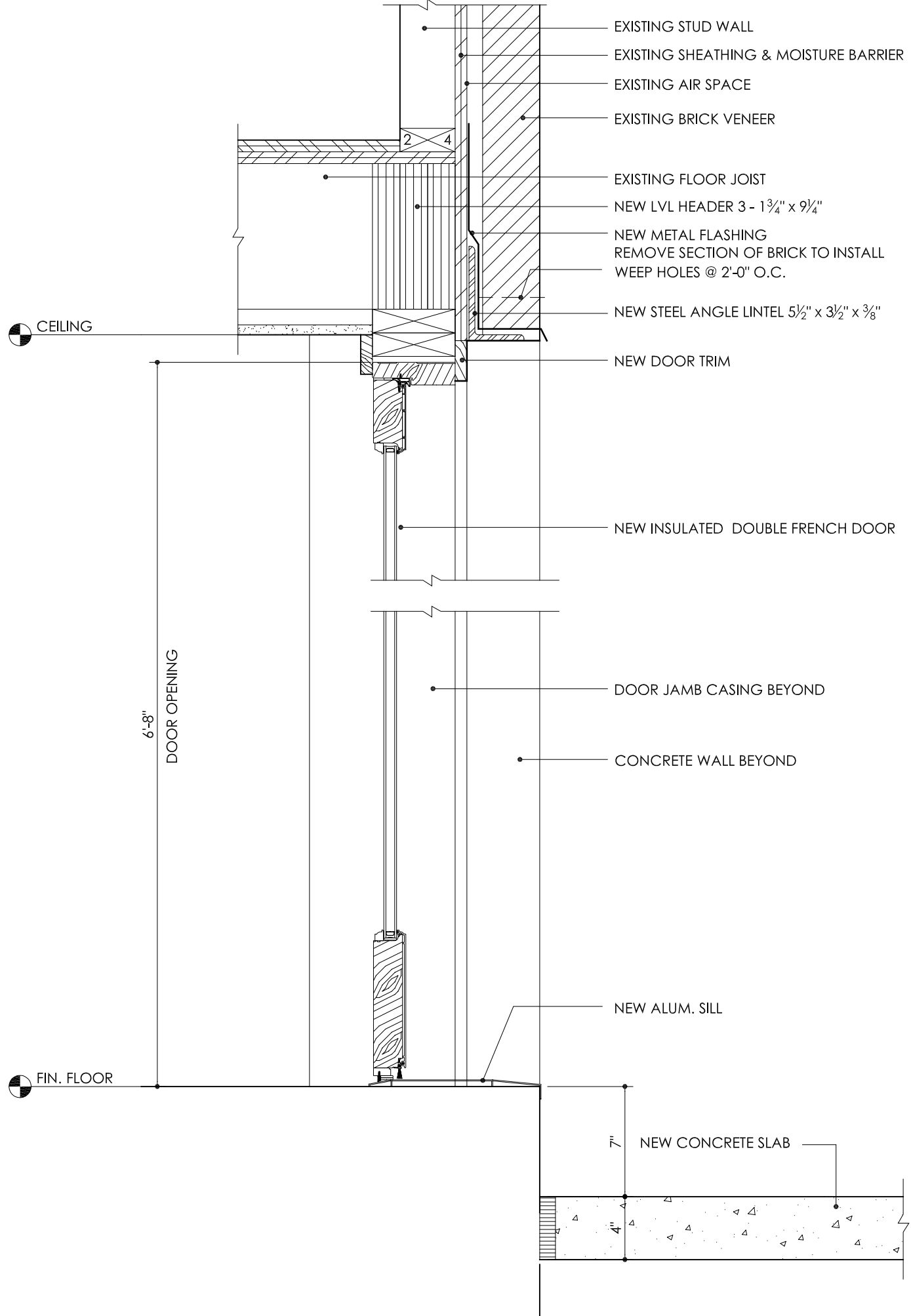
CONSTRUCTION NOTES:

1. EMERGENCY ESCAPE WINDOW IN BEDROOMS SHALL BE LOCATED WITH INTERIOR WINDOW SILL NO HIGHER THAN 44" ABOVE FINISHED FLOOR.
2. NET CLEAR OPENING OF WINDOWS SHALL BE 5.7 SF MIN WITH WINDOW OPENING HEIGHT OF 24" MIN. AND OPENING WIDTH 20", MINIMUM.
3. EXTERIOR WINDOW WELLS SHALL BE 9 SQUARE FEET MIN., WITH WIDTH 36" MINIMUM.
4. EXIT DOOR WIDTH SHALL BE 36" MINIMUM.

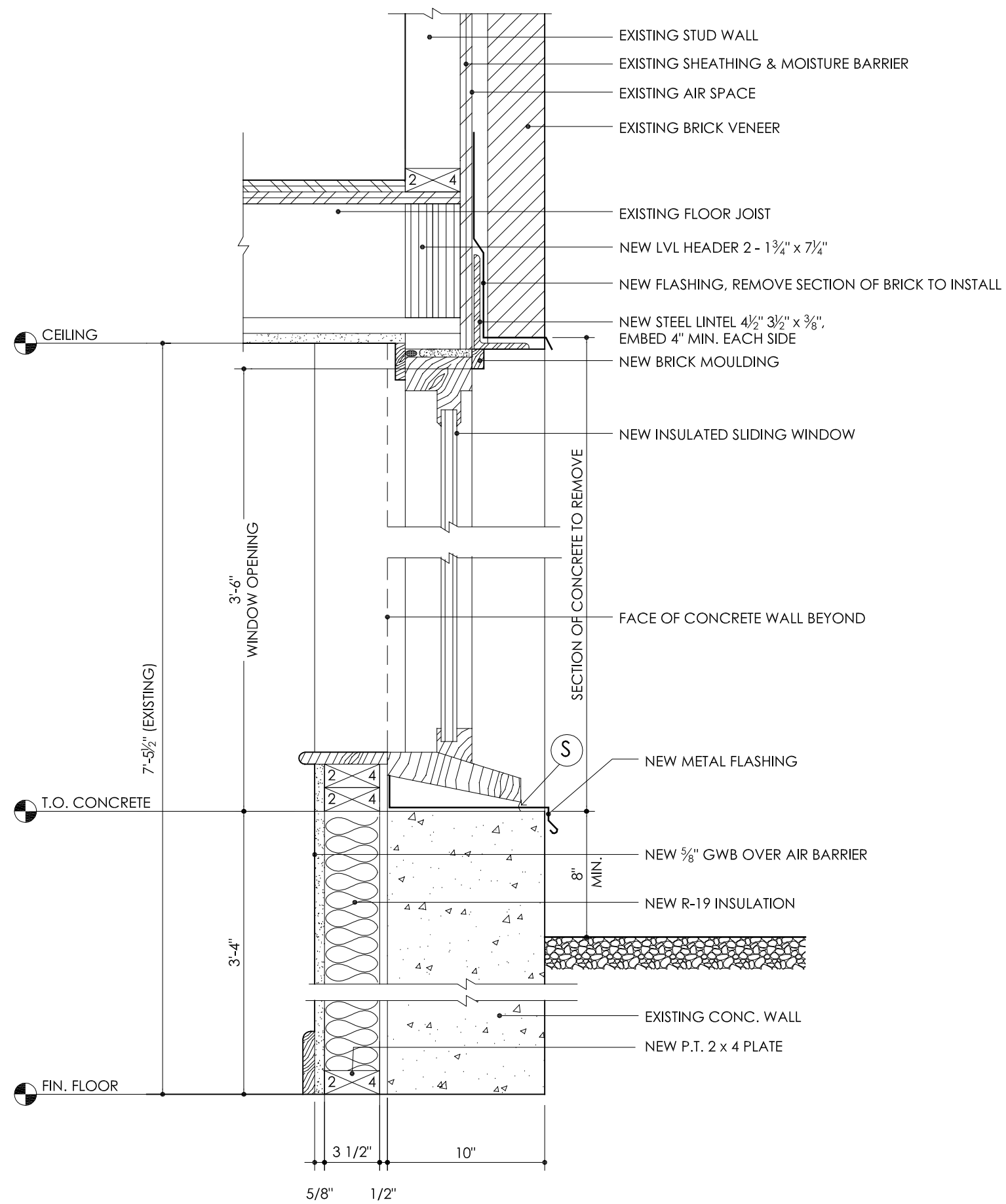
1 LOWER LEVEL PLAN

A-1

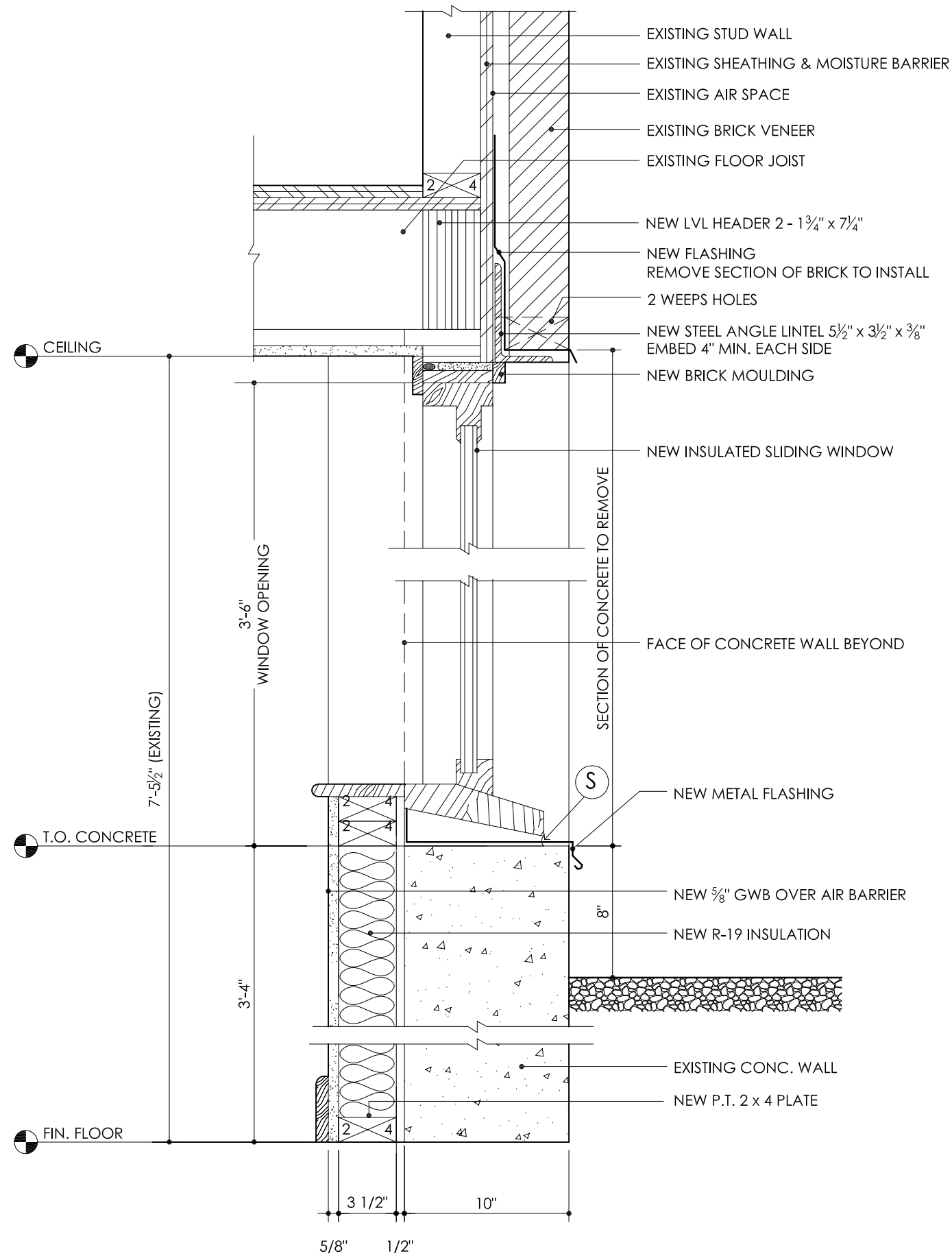
1/8" = 1'-0"



1 WALL SECTION @ WINDOW
1 1/2" = 1'-0"



2 WALL SECTION @ WINDOW
 1 1/2" = 1'-0"



3 WALL SECTION @ WINDOW
1 1/2" = 1'-0"